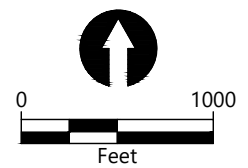




**SOURCE:** Aerial ©2026 Microsoft Corporation ©2026 Maxar ©CNES (2026)  
 Distribution Airbus DS ©2026 TMAP Mobility Earthstar Geographics SIO  
**HORIZONTAL DATUM:** California State Plane Zone 2,  
 NAD83(2011)(2010.00), US Survey Feet  
**VERTICAL DATUM:** MLLW

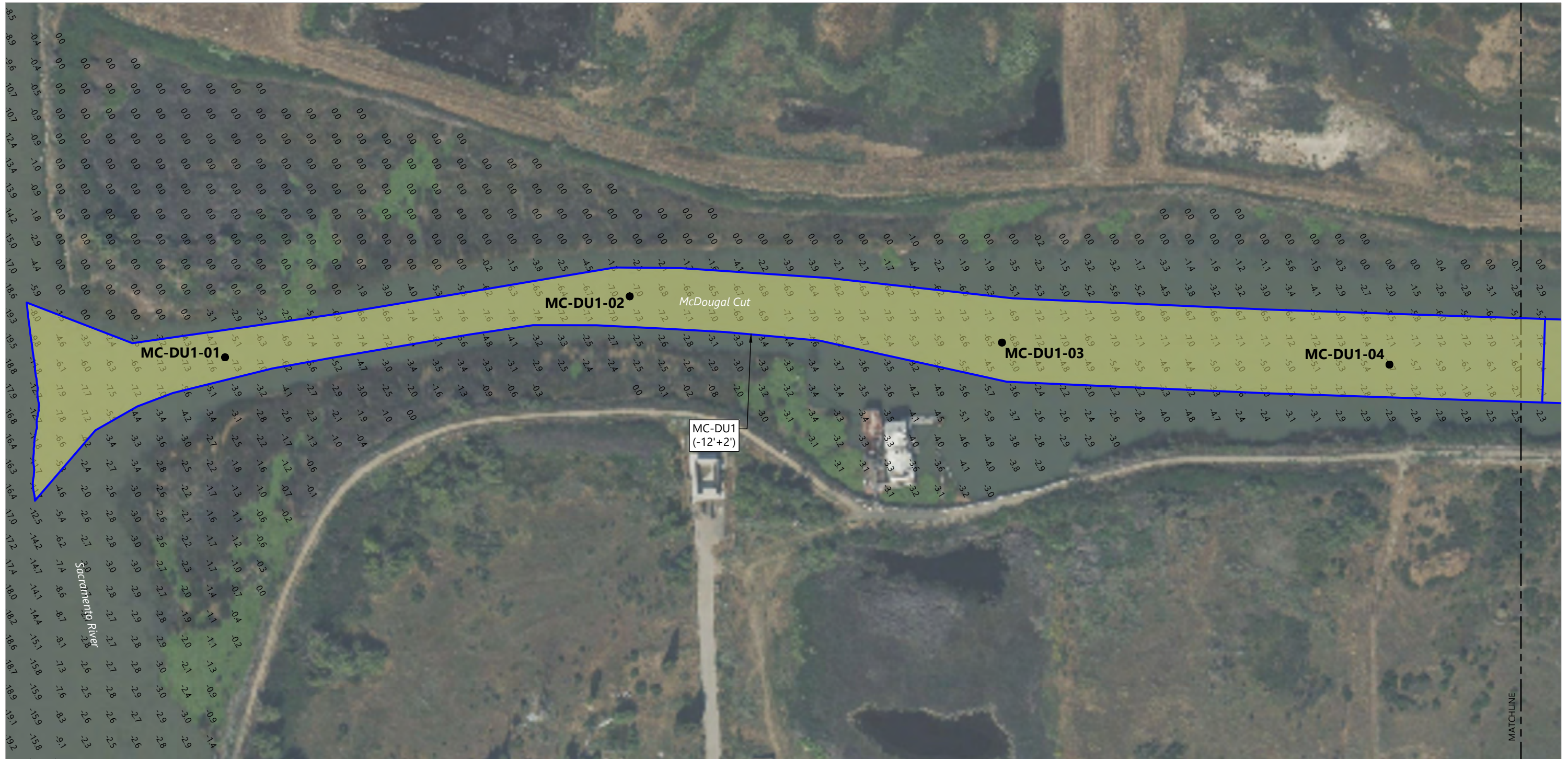
**NOTE:**  
 \* Montezuma Wetland Restoration Project



Publish Date: 2026/03/06 10:43 AM | User: dholmer  
 Filepath: K:\Projects\2189-Lind Marine\McDougal Cut Maintenance Dredging Project Support\2189-SAP-001.dwg | Figure 1



**Figure 1**  
**Vicinity Map**  
 Permit Application Supplement  
 McDougal Cut Dredging



**SOURCES:**

1. Aerial ©2026 Microsoft Corporation ©2026 Maxar ©CNES (2026) Distribution Airbus DS ©2026 TMAP Mobility Earthstar Geographics SIO
2. Bathymetry survey provided by Woolpert dated August 7, 2025 and supplemented with interpolated elevation data where needed.

**HORIZONTAL DATUM:** California State Plane Zone 2, NAD83(2011)(2010.00), US Survey Feet

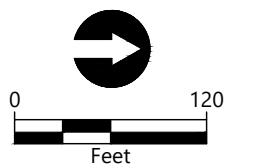
**VERTICAL DATUM:** MLLW

**LEGEND:**

- 1.9 Existing Sounding (Feet, MLLW)
- MC-DU1 (-12'+2') Dredge Unit Boundary and Designation (El. -12' MLLW + 2' Payable Overdepth)
- Dredge Footprint

MC-DU1-04 ● Sample Location and Designation

--- Matchline



Publish Date: 2026/03/06 10:43 AM | User: dholmer  
 Filepath: K:\Projects\2189-Lind Marine\McDougal Cut Maintenance Dredging Project Support\2189-SAP-003.dwg | Figure 2



**Figure 2**  
**Existing Bathymetry, Dredge Unit Boundaries, and Proposed Sampling Locations (1 of 3)**



**SOURCES:**

1. Aerial ©2026 Microsoft Corporation ©2026 Maxar ©CNES (2026) Distribution Airbus DS ©2026 TMAP Mobility Earthstar Geographics SIO
2. Bathymetry survey provided by Woolpert dated August 7, 2025 and supplemented with interpolated elevation data where needed.

**HORIZONTAL DATUM:** California State Plane Zone 2, NAD83(2011)(2010.00), US Survey Feet

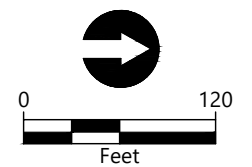
**VERTICAL DATUM:** MLLW

**LEGEND:**

- 1.9 Existing Sounding (Feet, MLLW)
- MC-DU2 (-12'+2') Dredge Unit Boundary and Designation (El. -12' MLLW + 2' Payable Overdepth)
- Dredge Footprint

MC-DU2-04 ● Sample Location and Designation

--- Matchline





**SOURCES:**

1. Aerial ©2026 Microsoft Corporation ©2026 Maxar ©CNES (2026) Distribution Airbus DS ©2026 TMAP Mobility Earthstar Geographics SIO
2. Bathymetry survey provided by Woolpert dated August 7, 2025 and supplemented with interpolated elevation data where needed.

**HORIZONTAL DATUM:** California State Plane Zone 2, NAD83(2011)(2010.00), US Survey Feet

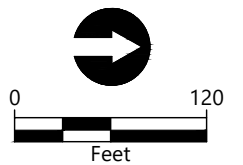
**VERTICAL DATUM:** MLLW

**LEGEND:**

- 1.9 Existing Sounding (Feet, MLLW)
- MC-DU3 (-12'+2') Dredge Unit Boundary and Designation (El. -12' MLLW + 2' Payable Overdepth)
- Dredge Footprint

MC-DU3-04 ● Sample Location and Designation

--- Matchline



Publish Date: 2026/03/06 10:44 AM | User: dholmer  
 Filepath: K:\Projects\2189-Lind Marine\McDougal Cut Maintenance Dredging Project Support\2189-SAP-003.dwg | Figure 4



**Figure 4**  
**Existing Bathymetry, Dredge Unit Boundaries, and Proposed Sampling Locations (3 of 3)**