

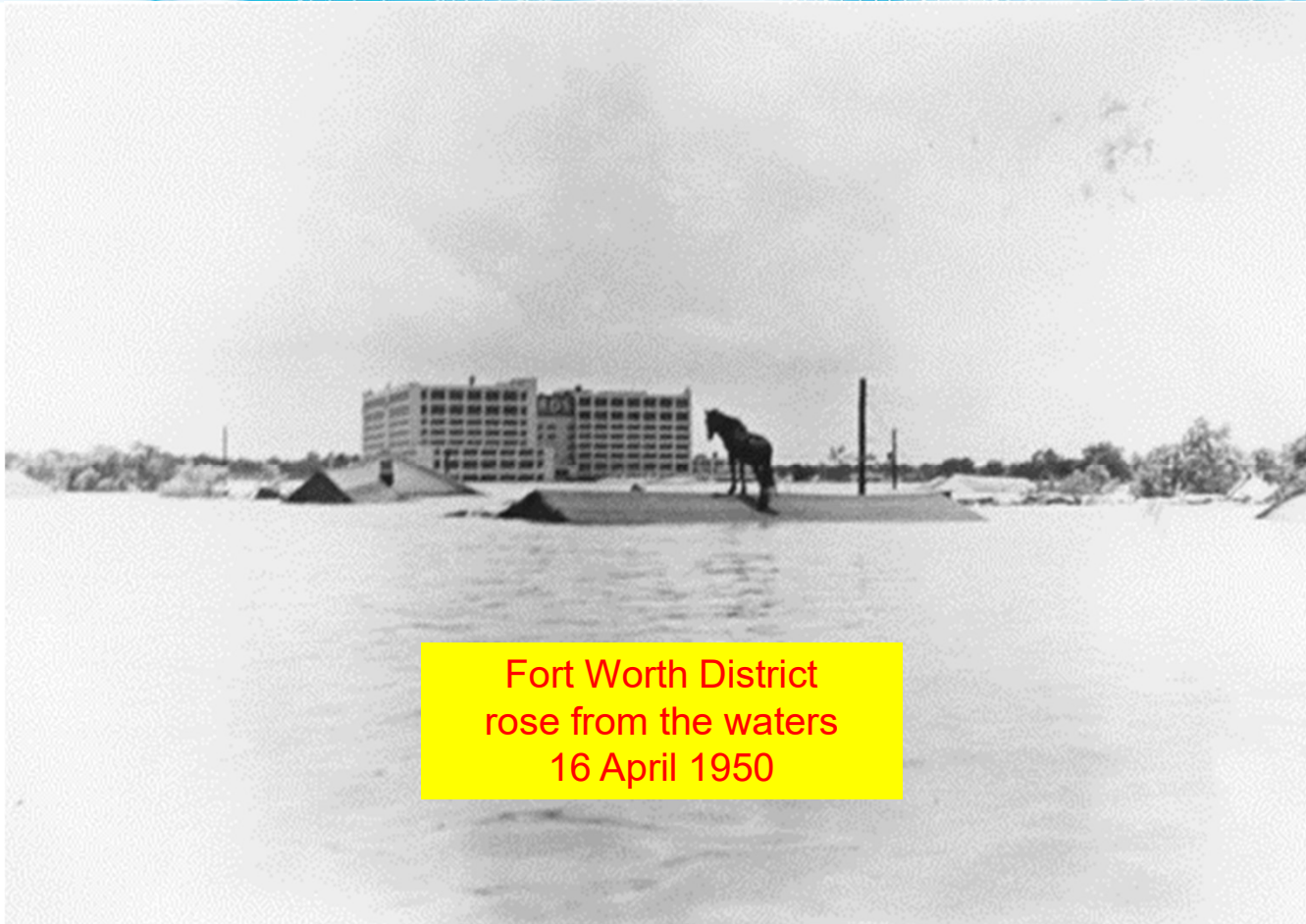


Fort Worth District U.S. Army Corps of Engineers

Welcome & District Overview

14 April 2026

COL Calvin A. Kroeger Fort Worth District Commander #28



Fort Worth District
rose from the waters
16 April 1950

Mission-Focused Approach



**US Army Corps
of Engineers**

UNITED STATES ARMY CORPS OF ENGINEERS

FORT WORTH DISTRICT

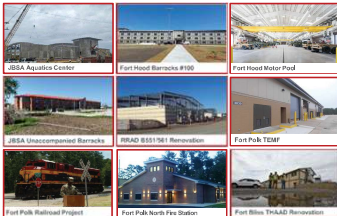
OUR MISSION

The Fort Worth District provides vital public engineering services, in peace and war, to strengthen our Nation's security, energize the economy, and reduce risks from disasters.



EST. 1950

MILITARY CONSTRUCTION



CIVIL WORKS



INTERNATIONAL AND INTERAGENCY SUPPORT



MILITARY CONSTRUCTION



CIVIL WORKS



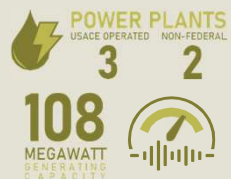
INTERNATIONAL AND INTERAGENCY SUPPORT

- PROVIDING TECHNICAL ASSISTANCE TO FEDERAL AGENCIES, STATE AND LOCAL GOVERNMENTS, TRIBAL NATIONS AND PRIVATE U.S. FIRMS
- BUREAU OF ENGRAVING PRINTING
- DEPARTMENT OF VETERAN AFFAIRS
- NATIONAL CEMETARY ADMINISTRATION
- DEFENSE LOGISTICS AGENCY
- TRANSPORTATION SECURITY ADMINISTRATION
- U.S. CUSTOMS AND BORDER PROTECTION
- IMMIGRATION AND CUSTOMS ENFORCEMENT

REAL ESTATE



HYDROPOWER



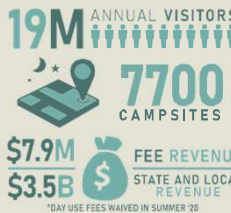
EMERGENCY MANAGEMENT



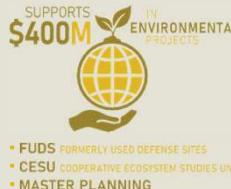
REGULATORY



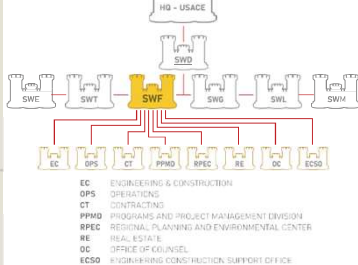
RECREATION



REGIONAL PLANNING AND ENVIRONMENTAL CENTER



ORG CHART



FOOTPRINT



CONTACT

819 TAYLOR ST.
FORT WORTH, TX 76102
817.886.1515 EXECUTIVE OFFICE
817.886.1306 PUBLIC AFFAIRS
www.swf.usace.army.mil



Office of Small Business Programs

Office of *Small Business* Programs

FY26 *Small Business* Goals Guidance: A **Mission-Focused Approach**

USACE Guidance: Approach to FY26 Small Business Program and Small Business Goals

Reinforce crucial shift mindset. We remain fully committed to maximizing Small Business Participation across the enterprise ... our primary focus must be on **mission success**.

Our goal is not simply to meet metrics, but to identify and partner with the most **capable, innovative**, and **reliable** Small Businesses that deliver **best value** to our projects and the Nation. Achieving our small business goals should be the natural **outcome** of a *robust acquisition strategy* that prioritizes quality and performance, not the sole driver of it.

Focusing on finding the right partners, we will strengthen our industrial base, enhance our project delivery, and ensure the continued success of USACE.

Office of *Small Business* Programs

- ★ **Advocate**
Assures SB are given fair consideration and opportunity in federal procurements
- ★ **Inform**
Forecast Opportunities, Acquisition Strategy, Regulation Updates
- ★ **Counsel**
Capability Statement Improvements, Future Acquisitions
- ★ **Assist**
Industry: Respond to Sources Sought, **PLA Survey**, **Subcontracting**, Networking, ACQ Strategy
Internal: District staff with Market Research, Acquisition Strategy, Recommend Capable SB
- ★ **Review**
Acquisition Strategy, SB Coordination Records (> \$10K), SB Participation & Subcontracting Plan

Website Updates

★ **FAQ** (*Frequently Asked Questions*) ★

- SB Participation Factor & SB Subcontracting Plan *Standard Language*
- FY2026 SB Goals – All Locations / Programs
- SBP & SBSP Calculation Template
- SB Set-asides Programs
- 8(a) Program RFO Update
- Revolutionary FAR Overhaul (RFO) Link
- Subcontracting Information / APEX Link(s)
- PLA Survey Response Information
- SBA Bona Fide Office Rule
- SBA SB Search Website: How to Export SB emails
- SAM.gov Website: Search Tip - W9126G*
- Other Transaction Authority (OTA)
- Design Build to Budget (DB2B)
- Progressive Design Build (PDB)
- CMMC

Fort Worth District (SWF) U.S. Army Corps of Engineers (USACE)



SWF OSBP *Website*

Click on
Castle
to
download
monthly

Opportunity Forecast



Updated after the 4th of every month.

View **Opportunity Forecast**, **FAQ** (**Frequently Asked Questions**) and **Events**
Request Capability Briefing (SB 1st priority / LB must include SB)



Small Business Administration (SBA)

Small Business Administration (SBA)

Derek Gadberry

Deputy Area Director

North Texas Area V

Office of Government Contracting
Small Business Administration

Derek.Gadberry@sba.gov

817-886-1024



Small Business Administration (SBA)

- ★ **Audit and Advocate**
Assures SBs are given fair consideration and opportunity in federal procurements; review Agency's SB coordination records
- ★ **Inform**
Informs agencies on updates to SB regulations and changes in SBA certification programs
- ★ **Counsel**
Receives copies of Cure/Show Cause notices of SB firms headquartered in the PCR's territory; contacts firm to offer assistance if needed
- ★ **Assist**
Assists agencies in meeting their SB goals through training, counseling and technical assistance; participates in outreach events
- ★ **Review**
Review Subcontracting Plans for compliance prior to award

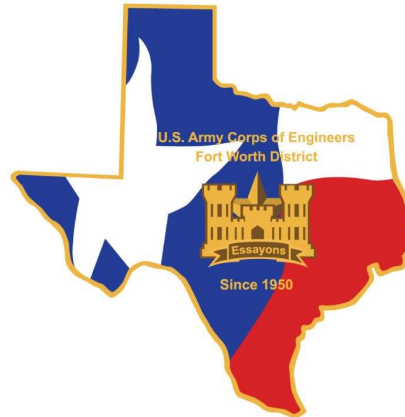


**Engineering & Construction
Support Office (ECSO)
and
Interagency & International
Services (ISS)**

Engineering and Construction Support Office (ECSO) Interagency & International Services (IIS)



Lawrence "LT" Thomas, III
Director, ECSO



Richard "Steve" Dill
Chief, IIS Branch

Engineering and Construction Support Office (ECSO) Interagency & International Services (IIS)

The ECSO is a National Program Office, located in the Fort Worth District.

- Customs and Border Protection “One Door to the Corps”
- Centralized program management support for Defense Logistics Agency portfolio worldwide

★ MAJOR CUSTOMERS / PARTNERS

- Department of Veterans Affairs (VHA & NCA)
- Drug Enforcement Agency (DEA)
- Defense Logistics Agency (DLA)
- Department of Agriculture (USDA)
- Department of Homeland Security (DHS)
 - Customs and Border Protection (CBP)
 - Immigration and Customs Enforcement (ICE)
 - Transportation Security Administration (TSA)
- Coast Guard (USCG)
- Defense Contract Management Agency (DCMA)
- Federal Emergency Management Agency (FEMA)

★ REQUESTED SERVICES

- Master Planning
- Environmental Restoration
- Design and Construction Services
- Real Estate Acquisition
- Facility Condition Assessments
 - Scope of Work Development

Engineering and Construction Support Office (ECSO) Interagency & International Services (IIS)

★ CURRENT PROJECTS

- USDA Domestic New World Screwworm Sterile Fly Facility
- USDA Agricultural Research Service (ARS) – 2 projects in Construction (Houston Children’s Nutrition Research Center and Kerrville Agricultural Research Station).
- VA VHA – BIM Services for Alexandria, LA VAMC.
- VA CFM – Dallas VA Parking Garage; Follow on demolition project.
- VA CFM – El Paso VA Hospital.
- ICE Facilities
 - El Paso Dormitory Detention Facility.
- DEA Intrepid Laboratory at EPIC, Fort Bliss
- CBP Facilities
 - Brown Field BPS, CA
 - Brown Field Hwy 94, CA*
 - Brown Field VMF, CA*
 - Freer BPS, TX**
- CBP Border Barrier Real Estate Acquisition



Rendering of the USDA Domestic NWS Facility, McAllen, TX

Engineering and Construction Support Office (ECOSO) Interagency & International Services (IIS)

★ FACILITY CONDITION ASSESSMENTS

FY26

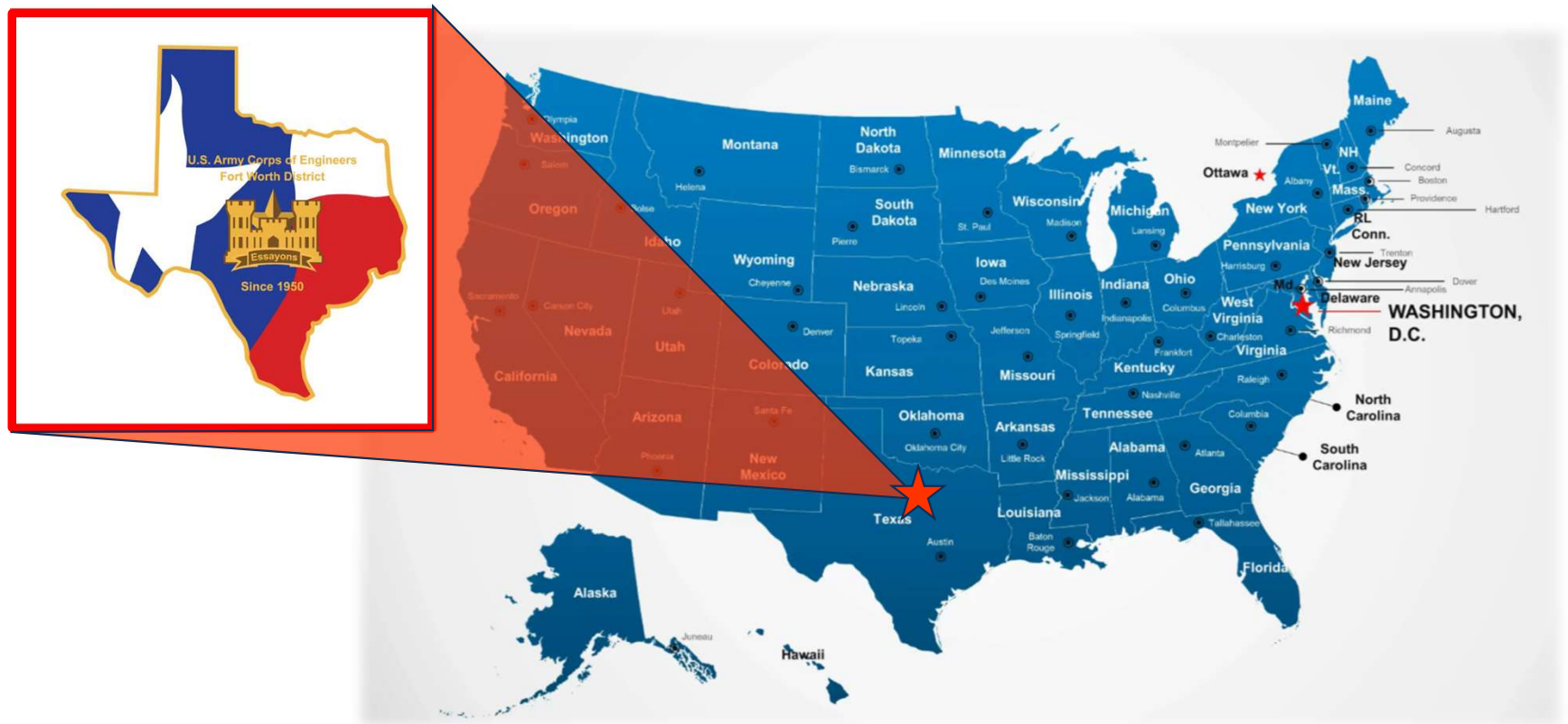
- April – DLA FCA Norfolk NSY/JNTEXPBASE Little Creek
- April – DLA FCA Robins AFB
- May – DLA FCA NAVSUPACT DET Philadelphia
- June – ULA FCA Humphreys Engineer Center Support Activity (HECSA)
- July – ULA FCA Humphreys Engineer Center Support Activity (HECSA)
- August – DLA FCA Fort Sill/Fort Carson/Fort Riley

FY27

- DLA FCA Davis-Monthan AFB/Holloman AFB
- DLA FCA Defense Supply Center Richmond
- DLA FCA NAVBASE Coronado/NAVBASE San Diego
- DLA FCA MCAS Cherry Point
- DLA FCA Fort Bragg/Camp Le Jeune
- DLA FCA Fort George Meade
- DLA FCA Red River Army Depot
- DLA FCA NAVSTA Rota/Aviano AB/NAS Sigonella
- DLA FCA Letterkenny Army Depot/Tobyhanna Army Depot
- DLA FCA NAS Corpus Christi
- DLA FCA Hill AFB

Engineering and Construction Support Office (ECSO) Interagency & International Services (IIS)

★ FUTURE WORK



Engineering and Construction Support Office (ECOSO) Interagency & International Services (IIS)



Points of Contact

Lawrence “LT” Thomas – lawrence.w.thomas@usace.army.mil

Interagency & International Services, Richard “Steve” Dill – Richard.S.Dill@usace.army.mil

Infrastructure Assessments, Omar Chavez – Omar.E.Chavez@usace.army.mil

Facilities, Theresa “Tobi” Cox – Theresa.O.Cox@usace.army.mil



**Programs & Project
Management Division
(PPMD)**

Military Program

Southwest Section

Peter Matar

Chief, Southwest Section

★ **Fort Bliss**

- Renovations
- 3D Barracks
- VA Medical Center

★ **Laughlin Air Force Base**

- Barracks Renovation
- T-7 Program Facilities

★ **Goodfellow Air Force Base**

- Dormitory
- Access Control Point

★ **Dyess Air Force Base**

- B-21 Program

★ **Fort Bliss**

- Renovations
- 3D Barracks
- VA Medical Center

★ **Corpus Christi Army Depot**

- Renovations
- Powertrain facilities

Flor Vega, PE

Southwest Construction Area Engineer



Joint Base San Antonio (JBSA)



Daryl Flaggs, PMP

Chief of JBSA Project Management

Kyle Loudermilk, PE

JBSA Construction Area Engineer

Home to more than 200 mission partners across six locations, Fort Sam Houston, Randolph, Camp Bullis, Lackland, Chapman Annex & Kelly Field Annex, not including South TX National Defense Area.

★ **Fort Sam Houston**

- Renovations
- METC Dorms

★ **Camp Bullis AIB (Jun 2026 Awd.)**

★ **Chapman Annex**

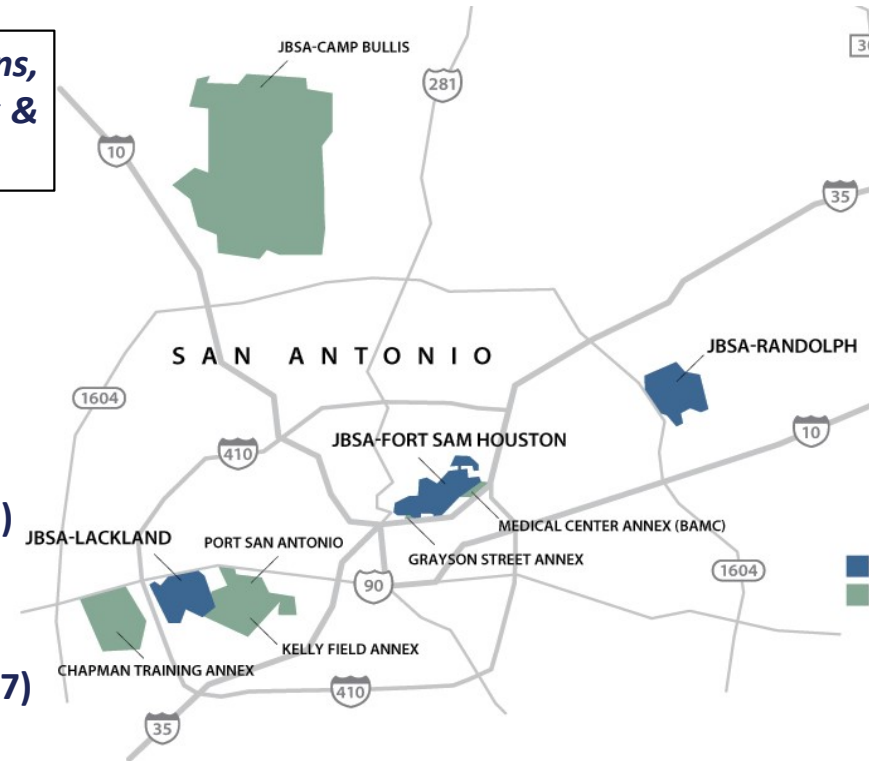
- Dog Kennels (Sep 2026 Adv.)

★ **Lackland & Randolph**

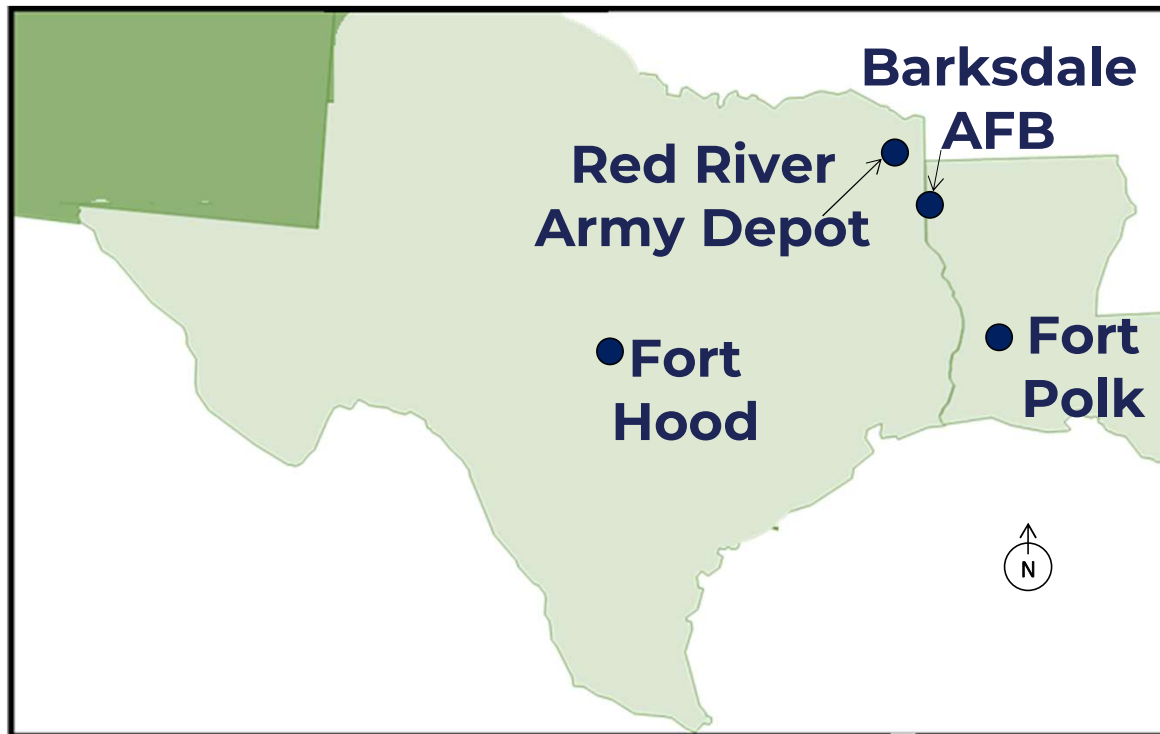
- Child Dev (May 2026 Awd.)

★ **Lackland**

- Chapel (Jul 2026 Adv.)
- Cyber Ops (Mar 2027 Adv.)
- ATC Campus
 - Dorm 7 (Feb 2027 Adv.)
- BMT Campus
 - DCF4 (May 2026 Adv.)
- Security Hill Projects-2 (2027)



Military Programs - Eastern



- ★ **Barksdale AFB**
 - SCIF renovations
- ★ **Red River Army Depot**
 - Organic Industrial Base (OIB)
- ★ **Fort Hood**
 - Barracks (New Construction)
 - Barracks (Renovation)
 - Motorpools
- ★ **Fort Polk**
 - Road Upgrades
 - Building Renovations



**Programs & Project
Management Division
(PPMD)**

Civil Works Program

Army Civil Works In The News!

Building Infrastructure, Not Paperwork

“The Army Civil Works’ ‘Building Infrastructure, Not Paperwork’ initiative will enable the U.S. Army Corps of Engineers to deliver critical projects and programs for the nation more efficiently, sooner, and at less cost than the current ways of doing business.”

–Adam Telle, Assistant Secretary of the Army for Civil Works

‘A Few’ Initiatives

- Prioritization Effort / News Release
- Smarter Contracting / FAR Overhaul
- RAPID Planning Framework



Infrastructure Delivery
Overhaul the pipeline from design to final execution.




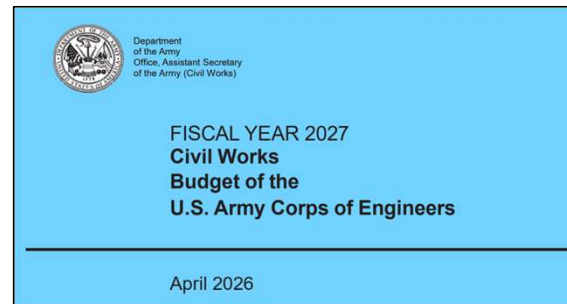
Operational Efficiency
Modernize business practices and optimize vehicle/real estate assets.



Transparency
Attack waste through fundamental overhaul of financial practices.

Budget Insights

- FY26 Work Plan
 - SWF Total: \$700K (C) / \$55.6M (O&M)
- FY27 Presidents Budget Released 
 - SWF Total: \$22.3M (O&M)



Fort Worth Top 5 Civil Works Priorities

Pri.

1.



\$91M Lewisville Dam Safety Modification

- 900+ spillway rock dowels down to competent bedrock
- New concrete apron overlay adds long term resilience
- Project on track for substantial completion October 2026

| Appropriation | Project Cost | Complete % / yr |
|---------------|------------------|-----------------|
| BBA18 | \$99,160,872 Fed | 89% |
| | \$0 Non-Fed | 2026 |

2.



\$89M Wharton Levee Phase I Flood Risk Management

- 5 Interior Drainage Sumps for improved urban drainage
- 12,350 linear feet of new levee for special project flood protection
- Project on track for Ph I substantial completion September 2026

| Appropriation | Project Cost | Complete % / yr |
|---------------|------------------|-----------------|
| BBA18 | \$89,674,408 Fed | 85% |
| | \$0 Non-Fed | 2026 |

3.



\$2M Canyon Dam Gate Repairs Phase I

- Replace two steel sluice gates extending service life up to 50 years
- Package will fabricate second set of gates for future install package
- Fabrication to begin late 2026 with phase 1 install mid-2027

| Appropriation | Project Cost | Complete % / yr |
|---------------|-----------------|-----------------|
| FY26 | \$1,941,022 Fed | 15% |
| Pres Budget | \$0 Non-Fed | 2028 |

4.



\$222M Dallas Floodway Flood Risk Management

- 5 New Pump Stations adding over 1M GPM pumping capacity
- 21 miles of Levee Improvements
- 3x active features to complete in calendar year 2027

| Appropriation | Project Cost | Complete % / yr |
|---------------|----------------------|-----------------|
| BBA18 | \$144,885,000 Fed | 52% |
| | \$78,015,000 Non-Fed | 2031 |

5.



\$501M Central City Flood Risk Management

- 1.5 mile bypass channel to mitigate flood risk in urban center
- Lock, dam and gates to control hydraulic capacity
- Project to initiate first major construction action October 2026

| Appropriation | Project Cost | Complete % / yr |
|---------------|-----------------------|-----------------|
| IIJA, DRSSA | \$501,519,760 Fed | 5% |
| | \$270,049,101 Non-Fed | 2043 |

WRDA 2026

- Shorthand for: Water Resources Development Act
- Biennial Legislation which authorizes civil works studies and projects
- Establishes a mandate/policy direction for USACE
- Directs USACE to produce reports on civil works topics
- Funding comes separately thru work plans or disaster supplementals
- The two Committees
 - House Transportation & Infrastructure Committee
 - Senate Environmental & Public Works Committee

Typical Support Products

- White Papers
- Maps
- Photos
- Economic costs/benefits
- Letters of local support



<https://www.youtube.com/watch?v=vkXY5xqriTI>

Road to WRDA 2026

- December 2026 – WRDA Bill!
- Fall 2026 – Conference negotiations
- NLT August 2026 – Floor passage H&S
- Q1FY26 – Committee markups
- Winter 2026 – Committee Draft Legislation
- Spring/Summer 2025 – Committee Hearings

Other Pathways to Federal Authorization

7001 Annual Report to Congress

- Open Season is May – Aug each year
- Goal: Inclusion in Annual Report to Congress on Future Water Resources Development
- Criteria Requirements
 - Related to the missions and authorities of the Corps
 - Require specific congressional authorization, including by an Act of Congress
 - Have not been congressionally authorized
 - Have not been included in the report table of any previous Annual Report to Congress on Future Water Resources Development
 - If authorized, could be carried out by the Corps
- Process
 - Proposal drafted and submitted to HQ by Sponsor to WRRDA7001Proposal@usace.army.mil
 - District/Division Review Proposal to determine if Water Resource need is a “core” mission, or if existing Authority to study exists or not
 - Proposal evaluation reviewed by HQ for final determination.
 - Corps produces Main Report and Appendices to transmit to Congress
 - Serves as a Menu for Congress to choose from for WRDAs to provide study authorities

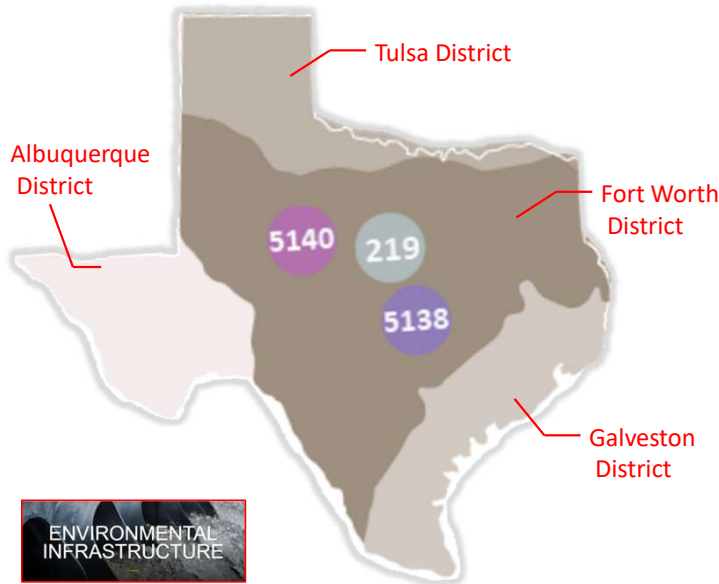


PROPOSAL PERIOD OPEN
APRIL 17 – AUGUST 15, 2025

- ✓ All completed proposal forms (PDF) must be submitted by 15 August to wrrda7001proposal@usace.army.mil
- ✓ All complete proposals will be considered for the 2026 Report to Congress on Future Water Resources Development

Environmental Infrastructure Opportunities

Texas' 3 WRDA EI Authorities



Overview

- **Purpose:** Financial or technical assistance for the design and construction of publicly-owned water infrastructure.
- **Section 219 = USACE Performs w/ AE and/or Contractor**
- **Section 5138 = Sponsor Performs & Reimbursed**
- **Section 5140 = City of Dallas only Reimbursable Water Projects**
- **Sponsor submits LOI to District Commander:**
 - **Project Name and Description with increments of work**
 - **Cost-share commitment / LERRDs responsible by sponsor**
 - **Maps, Community Benefits, Scopes of Work**
- **WRDA 2007 Sec 5158 Authority**

“(268) CENTRAL TEXAS.—\$20,000,000 for water and wastewater infrastructure in Bosque, Brazos, Burleson, Grimes, Hill, Hood, Johnson, Madison, McLennan, Limestone, Robertson, and Somervell Counties, Texas.

Featured Environmental Infrastructure

| Project | Auth | Sponsor | General Scope | EI Funded | Phase | Construction Opportunity |
|-------------------------------------|----------|-----------------|--|-----------|---------------|--------------------------|
| Waterloo Greenway | Sec 5138 | Austin, TX | Streambank erosion repair, stormwater improvements; environmental restoration | \$10M | Design & Cons | FY26 Q4 |
| Runaway Bay Wastewater Improvements | Sec 5138 | Runaway Bay, TX | Replacement of wastewater & drinking water distro lines | \$9M | Design | FY27 Q3 |
| Laredo Water Supply Improvements | Sec 219 | Laredo, TX | 25 miles of 8" water line replacement | \$20M | Design | FY28 Q1 |
| White Rock Lake Dredging | Sec 5140 | Dallas, TX | Current: Prelim Engineering & Design, NEPA, Permitting Future: Sediment Removal | \$2M | Design | FY28 Q4 |

Featured Civil Works Contract Opportunity

W9126G26RA056 Bypass Channel North



3,900 feet long, 200 feet wide channel

Soft side is a levee system and hard side is a flood wall

Pedestrian bridge linking both sides of the north bypass channel

| Project | Advertisement | Magnitude |
|--------------------------|---------------|------------------|
| Bypass North | 10APR26 | \$100M to \$250M |
| Bypass South | Q1FY27 | \$100M to \$250M |
| U. Drive/ Rockwood Pk | Q4FY28 | \$100M to \$250M |

Engineering the Trinity: The Fort Worth Bypass Channel

Integrated Levee-Hardwall System:
Earthen levees (West/North side) mirror reinforced concrete T-wall (East/South side).

Two-Tiered Walkable Floodwalls:
Hardwalls feature pedestrian promenades and walkways to create a new urban riverfront.

Engineering Scale and Phasing

825,000 Cubic Yards of Soil:
Massive excavation volume required for the 4,400-foot southern reach alone.

Construction Kickoff in 2026

Northern segment implementation begins in 2026
Southern segment is moving towards 100% design completion in 2026

Bypass Segment Comparison

| Segment | Length |
|--------------|--------------------------|
| North Bypass | Length: 3,600 – 3,900 ft |
| South Bypass | Length: 4,400 – 4,500 ft |

1.5-Mile Hydraulic Conduit:
An 8,400-foot open waterway excavated 30 feet below existing grade.

Deep Soil Mixing (DSM) Stability:
Subsurface stabilization technique used under floodwalls to prevent seepage and settlement.

30 Feet

Bid Opening: 25 May 2026

<http://www.projnet.org>

Quick add key 55VG9X-6MU9Y4
for bidder inquiries

NAICS Code
**237990 - Other Heavy and
Civil Engineering
Construction**

Questions?



Mark E. Herrmann, P.G., PMP

Chief of Civil Works

U.S. Army Corps of Engineers, Fort Worth District

Work: (817) 886-1874

Mark.e.Herrmann@usace.army.mil



**Programs & Project
Management Division
(PPMD)**

**IDIQ Overview
&
Future Opportunities**

Fort Worth District Indefinite Delivery Contracts

(Existing)

| Fort Worth District IDC Contract Capacity | Contract Est. Max Capacity | Total Obligations To Date | Total Reserved Capacity | Remaining Capacity | Last Contract Expiration Date |
|---|----------------------------|---------------------------|-------------------------|---------------------|-------------------------------|
| EC-AE DESIGN (MIL) | \$ 245,000,000.00 | \$ 98,473,263.00 | \$ 61,056,239.00 | \$ 85,470,498.00 | 9/2030 |
| EC-AE DESIGN (CIV) | \$ 105,000,000.00 | \$ 6,792,589.00 | \$ 67,815,719.00 | \$ 30,391,692.00 | 3/2028 |
| ECISO-AE DESIGN DLA | \$ 35,000,000.00 | \$ 17,128,700.00 | \$ 1,500,000.00 | \$ 16,371,300.00 | 1/2030 |
| ECISO AE Design - DHS Vertical (Nationwide) | \$ 100,000,000.00 | \$ 1,261,460.00 | \$ 1,653,540.00 | \$ 97,085,000.00 | 9/2031 |
| COS - AE Design | \$ 48,000,000.00 | \$ 15,973,381.00 | \$ 4,638,435.00 | \$ 27,388,184.00 | 5/2028 |
| AE-OTHER (PLANNING, SURVEYING) | \$ - | \$ - | \$ - | \$ - | N/A |
| CONSTRUCTION PHASED SERVICES (CPS) | \$ 200,000,000.00 | \$ 19,061,193.00 | \$ 166,487,385.00 | \$ 14,451,422.00 | 8/2030 |
| JOC - FORT POLK | \$ 25,000,000.00 | \$ 8,470,808.00 | \$ - | \$ 16,529,192.00 | 12/2028 |
| JOC - FORT HOOD | \$ 200,000,000.00 | \$ 125,072,528.00 | \$ - | \$ 74,927,472.00 | 6/2028 |
| JOC - CCAD | \$ 45,000,000.00 | \$ 13,706,147.00 | \$ - | \$ 31,293,853.00 | 8/2027 |
| CONSTRUCTION VERTICAL SB | \$ 620,140,000.00 | \$ 211,630,876.00 | \$ 166,197,391.00 | \$ 242,311,733.00 | 9/2026 |
| CONSTRUCTION VERTICAL 8(a) | \$ 164,400,000.00 | \$ 123,413,250.00 | \$ 31,884,231.00 | \$ 9,102,519.00 | 9/2027 |
| CONSTRUCTION VERTICAL WOSB | \$ 116,385,000.00 | \$ 9,445,078.00 | \$ 66,687,900.00 | \$ 40,252,022.00 | 9/2028 |
| CONSTRUCTION VERTICAL UR | \$ 2,358,526,000.00 | \$ 335,651,997.00 | \$ 797,415,879.00 | \$ 1,225,458,124.00 | 3/2029 |
| CONSTRUCTION VERTICAL SB- FORT POLK | \$ 95,000,000.00 | \$ 17,500.00 | \$ - | \$ 94,982,500.00 | 1/2033 |
| CONSTRUCTION HORIZONTAL HZ- FORT POLK | \$ 20,000,000.00 | \$ 5,538,250.00 | \$ 7,930,568.00 | \$ 6,531,182.00 | 9/2032 |
| CONSTRUCTION HORIZONTAL 8a - FORT POLK | \$ 31,000,000.00 | \$ 2,296,870.00 | \$ - | \$ 28,703,130.00 | 9/2032 |

Fort Worth District Indefinite Delivery Contracts

(Planned)

| Type | Solicitation Number | Scheduled Award | Value |
|--|-----------------------------|-----------------|-------|
| BPA Negotiation Services for CBP Land Acquisitions (TX SB Group A) | Pending Sol. # (P2# 576324) | 5 JUN 26 | \$70M |
| BPA Solicitation for Title Services (TX SB Group A) | W9126G26R1ATS (P2# 576325) | 15 MAY 26 | \$99M |
| Land Survey Services (Regional) | W9126G25RA019 | 9 APR 26 | \$90M |

Fort Worth District Indefinite Delivery Contracts

(Planned)

| Type | Solicitation Number | Firm Type | Value |
|---|---------------------|----------------|--------|
| Military Vertical Construction MATOC (Bliss Intel Coord Annex) (Regional) | W9126G20R0049 | SDVOSB | \$102M |
| ECSO Vertical Construction MATOC (Sample Project) (Regional) | W9126G24R0118 | Unrestricted | \$1.5B |
| ECSO Vertical Construction MATOC (Scaled Down Sample Project) (Regional) | W9126G21R0020 | Small Business | \$300M |
| Johnson Vertical Construction MATOC (Local) | W9126G24R0124 | 8(a) | \$75M |

Fort Worth District Indefinite Delivery Contracts

(Planned)

| Type | Solicitation Number | Firm Type | Value |
|---|---------------------|----------------|--------|
| Johnson ITAMS SATOC (Local) | W9126G-X | TBD | \$20M |
| Value Engineering (Regional) | W9126G25R0129 | Small Business | \$9.5M |
| Military Vertical Construction MATOC (Qualification Based) (Regional) | W9126G-X | Small Business | \$300M |

Fort Worth District Indefinite Delivery Contracts by Name and Companies

(Construction Phased Services)

| | | | | | |
|-----------|---------------|--|--|---|--------|
| A-E (CPS) | W9126G23D0020 | A-E (CPS) Construction Phased Services | A-E (CPS) Construction Phased Services | Health Facilities Solutions (HFS) | SDVOSB |
| A-E (CPS) | W9126G23D0021 | A-E (CPS) Construction Phased Services | A-E (CPS) Construction Phased Services | LRS Federal, Inc. | SDVOSB |
| A-E (CPS) | W9126G23D0022 | A-E (CPS) Construction Phased Services | A-E (CPS) Construction Phased Services | MSMM Huitt- Zollars JV | |
| A-E (CPS) | W9126G23D0023 | A-E (CPS) Construction Phased Services | A-E (CPS) Construction Phased Services | ACCURA Engineering and Consulting Services, Inc. | SB |
| A-E (CPS) | W9126G23D0024 | A-E (CPS) Construction Phased Services | A-E (CPS) Construction Phased Services | SLICOM | WOSB |
| A-E (CPS) | W9126G23D0025 | A-E (CPS) Construction Phased Services | A-E (CPS) Construction Phased Services | Parsons Government Services Inc. | Large |
| A-E (CPS) | W9126G23D0026 | A-E (CPS) Construction Phased Services | A-E (CPS) Construction Phased Services | Jacobs Inc. | Large |
| A-E (CPS) | W9126G23D0027 | A-E (CPS) Construction Phased Services | A-E (CPS) Construction Phased Services | Huitt-Zollars Inc. | Large |
| A-E (CPS) | W9126G23D0028 | A-E (CPS) Construction Phased Services | A-E (CPS) Construction Phased Services | HDR Inc. | Large |

Fort Worth District Indefinite Delivery Contracts by Name and Companies

(Center of Standardization AE Design)

| | | | | | |
|-----------------------|---------------|-----------------------|--|-----------------------------------|-------|
| A-E (Engr and Design) | W9126G23D0014 | A-E (Engr and Design) | COS IDIQ for AE Centers of Standardization | Blair Remy-Merrick MP/JV | Small |
| A-E (Engr and Design) | W9126G23D0015 | A-E (Engr and Design) | COS IDIQ for AE Centers of Standardization | Etegra – CEMS JV | Small |
| A-E (Engr and Design) | W9126G23D0016 | A-E (Engr and Design) | COS IDIQ for AE Centers of Standardization | Etegra | Small |
| A-E (Engr and Design) | W9126G23D0017 | A-E (Engr and Design) | COS IDIQ for AE Centers of Standardization | Merrick & Company | Large |
| A-E (Engr and Design) | W9126G23D0018 | A-E (Engr and Design) | COS IDIQ for AE Centers of Standardization | expFederal, Inc. | Large |
| A-E (Engr and Design) | W9126G23D0019 | A-E (Engr and Design) | COS IDIQ for AE Centers of Standardization | Michael Baker International, Inc. | Large |

Fort Worth District Indefinite Delivery Contracts by Name and Companies

(Engineering & Design AE Civil)

| | | | | | |
|-----------------------|---------------|-----------------------|-------------------------------------|------------------------------------|-------|
| A-E (Engr and Design) | W9126G23D0001 | A-E (Engr and Design) | IDIQ AE Services for Civil Programs | GEO-STANLEY JOINT VENTURE | Small |
| A-E (Engr and Design) | W9126G23D0002 | A-E (Engr and Design) | IDIQ AE Services for Civil Programs | KENALL-HALFF JV LLC. | Small |
| A-E (Engr and Design) | W9126G23D0003 | A-E (Engr and Design) | IDIQ AE Services for Civil Programs | MSMM HUITT-ZOLLARS A JOINT VENTURE | Small |

Fort Worth District Indefinite Delivery Contracts by Name and Companies

(Engineering & Design AE DLA)

| | | | | | |
|-----------------------|---------------|-----------------------|-----------------------|------------------------------------|-------|
| A-E (Engr and Design) | W518EA23D0001 | A-E (Engr and Design) | IDC- A-E Services DLA | MSMM HUITT-ZOLLARS A JOINT VENTURE | Small |
| A-E (Engr and Design) | W518EA23D0002 | A-E (Engr and Design) | IDC- A-E Services DLA | SCOUT-CARDNO JOINT VENTURE LLC | Small |
| A-E (Engr and Design) | W518EA23D0003 | A-E (Engr and Design) | IDC- A-E Services DLA | OEI-AECOM JOINT VENTURE | Small |

Fort Worth District Indefinite Delivery Contracts by Name and Companies

(Engineering & Design AE DHS)

| | | | | | |
|-----------------------|---------------|-----------------------|-----------------------|--|-------|
| A-E (Engr and Design) | W9126G24D0019 | A-E (Engr and Design) | IDC- A-E Services DHS | O BRIEN ENGINEERING INC | Small |
| A-E (Engr and Design) | W9126G24D0020 | A-E (Engr and Design) | IDC- A-E Services DHS | SHERLOCK, SMITH & ADAMS INC. | Small |
| A-E (Engr and Design) | W9126G24D0021 | A-E (Engr and Design) | IDC- A-E Services DHS | THE JOHNSON-MCADAMS FIRM, P.A. | Small |
| A-E (Engr and Design) | W9126G24D0022 | A-E (Engr and Design) | IDC- A-E Services DHS | ATKINS/HALFF JV | Small |
| A-E (Engr and Design) | W9126G24D0023 | A-E (Engr and Design) | IDC- A-E Services DHS | TRANSYSTEMS CORPORATION | Small |
| A-E (Engr and Design) | W9126G24D0024 | A-E (Engr and Design) | IDC- A-E Services DHS | MICHAEL BAKER INTERNATIONAL & HUITT-ZOLLARS JV | Small |

Fort Worth District Indefinite Delivery Contracts by Name and Companies

(Engineering & Design AE Military)

| | | | | | |
|-----------------------|---------------|-----------------------|--|---|--|
| A-E (Engr and Design) | W9126G23D0004 | A-E (Engr and Design) | (A-E) Design Services, for Military Programs | AECOM GARVER FTW MILCON JV | |
| A-E (Engr and Design) | W9126G23D0005 | A-E (Engr and Design) | (A-E) Design Services, for Military Programs | Burns & McDonnell Engineering Company, Inc. | |
| A-E (Engr and Design) | W9126G23D0006 | A-E (Engr and Design) | (A-E) Design Services, for Military Programs | MERRICK & COMPANY | |
| A-E (Engr and Design) | W9126G23D0007 | A-E (Engr and Design) | (A-E) Design Services, for Military Programs | ICE & DANNENBAUM JV 2 | |
| A-E (Engr and Design) | W9126G23D0008 | A-E (Engr and Design) | (A-E) Design Services, for Military Programs | CITRINE-OLSSON JV LLC | |
| A-E (Engr and Design) | W9126G23D0009 | A-E (Engr and Design) | (A-E) Design Services, for Military Programs | WESTEAST DESIGN GROUP, LLC | |
| A-E (Engr and Design) | W9126G23D0010 | A-E (Engr and Design) | (A-E) Design Services, for Military Programs | TOLAND & MIZELL ARCHITECTS, INC. | |
| A-E (Engr and Design) | W9126G23D0011 | A-E (Engr and Design) | (A-E) Design Services, for Military Programs | MSMM HUITT-ZOLLARS A JOINT VENTURE LLC | |
| A-E (Engr and Design) | W9126G23D0013 | A-E (Engr and Design) | (A-E) Design Services, for Military Programs | GEO-STANLEY JOINT VENTURE 2 | |

Fort Worth District Indefinite Delivery Contracts by Name and Companies

(Construction Vertical Small Business)

| | | | | | |
|----------------------------|---------------|----------------------------|--|--|--------------|
| Construction (Vertical) | W9126G21D0013 | Construction (Vertical) | Small Business (SB) Vertical Construction Services (DB, DBB) | WALGA ROSS GROUP 3 JV | Small |
| Construction (Vertical) | W9126G21D0014 | Construction (Vertical) | Small Business (SB) Vertical Construction Services (DB, DBB) | AMG CONTRACTORS LLC | Small |
| Construction (Vertical) | W9126G21D0015 | Construction (Vertical) | Small Business (SB) Vertical Construction Services (DB, DBB) | BRISTOL DESIGN BUILD SERVICES, LLC | Small |
| Construction (Vertical) | W9126G21D0016 | Construction (Vertical) | Small Business (SB) Vertical Construction Services (DB, DBB) | CLEMENT GROUP, L.L.C. | Small |
| Construction (Vertical) | W9126G21D0017 | Construction (Vertical) | Small Business (SB) Vertical Construction Services (DB, DBB) | J & J CONTRACTORS, INC. | Small |
| Construction (Vertical) | W9126G23D0029 | Construction (Vertical) | Small Business (SB) Vertical Construction Services (DB, DBB) | Koman Construction | Small |
| Construction (Vertical) | W9126G23D0030 | Construction (Vertical) | Small Business (SB) Vertical Construction Services (DB, DBB) | SGS LLC | Small |

Fort Worth District Indefinite Delivery Contracts by Name and Companies

(Construction Vertical 8(a))

| | | | | | |
|----------------------------|---------------|----------------------------|---|-------------------------------|-----------|
| Construction (Vertical) | W9126G22D0046 | Construction (Vertical) | 8a Vertical Construction Services (DB, DBB) | KOMAN CONSTRUCTION, LLC | 8a |
| Construction (Vertical) | W9126G22D0047 | Construction (Vertical) | 8a Vertical Construction Services (DB, DBB) | CCI MECHANICAL, LLC | 8a |
| Construction (Vertical) | W9126G22D0048 | Construction (Vertical) | 8a Vertical Construction Services (DB, DBB) | RED EAGLE JV | 8a |
| Construction (Vertical) | W9126G22D0049 | Construction (Vertical) | 8a Vertical Construction Services (DB, DBB) | LEMOINE - FRAZIER JV LLC | 8a |
| Construction (Vertical) | W9126G22D0050 | Construction (Vertical) | 8a Vertical Construction Services (DB, DBB) | REASOR- ASTURIAN JV LLC | 8a |

Fort Worth District Indefinite Delivery Contracts by Name and Companies

(Construction Vertical WOSB)

| | | | | | |
|----------------------------|---------------|----------------------------|---|--|-------------|
| Construction (Vertical) | W9126G23D0041 | Construction (Vertical) | WOSB Vertical Construction Services (DB, DBB) | DAP-BRISTOL JV, LLC | WOSB |
| Construction (Vertical) | W9126G23D0042 | Construction (Vertical) | WOSB Vertical Construction Services (DB, DBB) | MIRADOR-PERIKIN JV, LLC | WOSB |
| Construction (Vertical) | W9126G23D0043 | Construction (Vertical) | WOSB Vertical Construction Services (DB, DBB) | GIDEON CONTRACTING, LIMITED LIABILITY COMPANY | WOSB |
| Construction (Vertical) | W9126G23D0044 | Construction (Vertical) | WOSB Vertical Construction Services (DB, DBB) | G.M. HILL ENGINEERING, INC. | WOSB |
| Construction (Vertical) | W9126G23D0045 | Construction (Vertical) | WOSB Vertical Construction Services (DB, DBB) | RLMO CONSTRUCTORS JV | WOSB |
| Construction (Vertical) | W9126G23D0046 | Construction (Vertical) | WOSB Vertical Construction Services (DB, DBB) | SOUTHEAST CHEROKEE CONSTRUCTION, INC. | WOSB |

Fort Worth District Indefinite Delivery Contracts by Name and Companies

(Construction Vertical Unrestricted)

| | | | | | |
|----------------------------|---------------|----------------------------|--|-----------------------------------|--------------|
| Construction (Vertical) | W9126G24D0007 | Construction (Vertical) | UR Vertical Construction Services (DB, DBB) | M. A. MORTENSON COMPANY | Large |
| Construction (Vertical) | W9126G24D0008 | Construction (Vertical) | UR Vertical Construction Services (DB, DBB) | GILBANE FEDERAL JV | Large |
| Construction (Vertical) | W9126G24D0010 | Construction (Vertical) | UR Vertical Construction Services (DB, DBB) | MW BUILDERS, INC. | Large |
| Construction (Vertical) | W9126G24D0011 | Construction (Vertical) | UR Vertical Construction Services (DB, DBB) | SAUER CONSTRUCTION, LLC | Large |
| Construction (Vertical) | W9126G24D0012 | Construction (Vertical) | UR Vertical Construction Services (DB, DBB) | WALSH FEDERAL LLC | Large |
| Construction (Vertical) | W9126G24D0025 | Construction (Vertical) | UR Vertical Construction Services (DB, DBB) | Hensel Phelps | Large |
| Construction (Vertical) | W9126G24D0026 | Construction (Vertical) | UR Vertical Construction Services (DB, DBB) | W.G. Yates & Sons Construction | Large |
| Construction (Vertical) | W9126G24D0027 | Construction (Vertical) | UR Vertical Construction Services (DB, DBB) | Zodiac-Poettker HBZ JV II LLC. | Large |



Contracting Division

CONTRACTING

★ FAR Overhaul

- Over 500 FAR provisions (removal/consolidation)
- Fewer mandates, greater reliance on Contracting Officer judgement (thresholds)
- Increase acquisition efficiency, leverage innovation, and embrace risk
- CMMC to ensure contractors implement and maintain cybersecurity controls to protect FCI and CUI, Level 1 (Foundational) or Level II (Advanced)

★ Contracting Methods

- Commercial solutions first
- Other Transaction Authority (OTA)
- Design Build to Budget (DB2B)
- Progressive Design Build (PDB)
- Use of AI to speed acquisition documentation, compliance



Regional Planning & Environmental Center (RPEC)

Regional Planning and Environmental Center

Southwestern Regional Planning & Environmental Center (SWD-RPEC)

- **Unique:** provides planning and environmental functions for all four (4) SWD Districts (Civil and Military).
- **Responsible:** leads, manages, and delivers projects in SWD and other AORs in accordance with established policies and agreements.

SWD-RPEC is part of the CESWF IMD, reporting to SWF Commander. Governance is Shared between Regional DPMs, MSC Functional Chiefs and RPEC Director.



Regional Planning and Environmental Center

Tailored Support:

(Technical/Contractual)

- Civil Works Planning
- Master Planning
- Environmental/Cultural
- Military Munitions*
- Civil Operation & Maintenance

Civil Planning Branch

Responsible for the development and oversight of the full range of Civil Works studies and products (including support during design and construction) critical for execution of assigned Civil missions. **Program services are primarily provided via in-house resources.**

Environmental Branch

Responsible for environmental technical support of environmental / cultural compliance and applicable “green” initiatives. **Program services are provided via in-house personnel.**

Military and Interagency Environmental Branch

Responsible and accountable for the management, execution, and delivery of projects and services for SWD reimbursable environmental customers. **Program services are primarily provided via contracts.**

Master Planning Branch

Responsible for Master Planning of Civil O&M, Military, and IIS missions. Designated by HQ as the SWD and POD Military Master Planning Support Center. **Program services provided via combination of in-house resources and contracts.**

RPEC Fort Worth / Tulsa District Indefinite Delivery Contracts (Planned)

SWD-RPEC works through both SWT and SWF Contracting Divisions

- SWD-RPEC awards and administers ~ \$300M in project contracts and agreements annually.
- IDIQ “Base” contracts are developed and maintained on a rolling basis to support missions in the SWD AOR and beyond:
 - Environmental and Master Planning Architect-Engineer Services
 - Environmental Consulting Services
 - Environmental Remediation Services
 - Real Property Management Services

| Contract Name | Description | District | Project Location (PoP) | Solicitation Date | Solicitation Number | NAICS Code | Solicitation Type | Source Sought | Scheduled Award | Value |
|--------------------------|--------------|-------------|---|-------------------|---------------------------------|------------|--|---------------|-----------------|----------|
| Environmental | A-E Services | Tulsa (SWT) | Southwestern Division/CONUS - Area of Operations | FY26 | Pending Sol. # TDB (P2# 517953) | 541330 | Multiple Award Task Order Contract (MATOC) | Completed | MAY 2027 | \$249.9M |
| NEPA | A-E Services | Tulsa (SWT) | Southwestern Division/CONUS - Area of Operations | FY26 | Pending Sol. # TDB (P2# 517952) | 541330 | Multiple Award Task Order Contract (MATOC) | Completed | MAY 2027 | \$150M |
| Master Planning Services | A-E Services | Tulsa (SWT) | Southwestern Division/Pacific Ocean Division - Area of Operations | FY25 | Pending Sol. # TDB (P2# 570987) | 541320 | Multiple Award Task Order Contract (MATOC) | JAN 2026 | JUN 2027 | \$450M |



Engineering & Construction

Engineering and Construction Division

- ★ **Christopher Morgan, P.E., PMP, CCM**
 - Chief, Engineering and Construction Division

- ★ **Rachel Guthmueller, P.E.**
 - Assistant Chief, Engineering and Construction Division



“Getting the Engineering Right”

Safely

Delivering

Quality Projects

On Schedule

and

Within Budget

Partnering Playbook (EP 34-1-1)

- ✓ Partnering is a means to a positive and cooperative working relationship with all stakeholders
- ✓ Partnering is applicable to all mission lines and phases of delivery
- ✓ A “**partnering mindset**” must be voluntarily embraced to achieve successful partnering outcomes
- ✓ Partnering is continual and should be incorporated into all activities and interactions
- ✓ Partnering requires enduring leadership commitment and active involvement
- ✓ Each relationship is unique and should be treated as such

Partnering

3 Cs of Successful Partnering



Why Relationships Matter!

| Metric | Impact of Partnering | Source |
|-------------------------|--|--------------|
| Cost Growth | A study of 2,700 projects found that 44% of construction projects end in a loss. Partnering helps mitigate this by fostering collaboration and reducing adversarial relationships. | DBIA |
| Time Growth | 27.5% of projects are delivered late. Partnering can significantly reduce this by improving communication and proactively solving issues. | Buildertrend |
| Overall Project Success | 10% reduction in total project cost. 20% reduction in project duration. 50% reduction in rework. 80% reduction in claims. | USACE |
| Return on Investment | For every \$1 spent on partnering, there is a \$60 savings. | USACE |
| Satisfaction & Safety | 30% improvement in job satisfaction 83% reduction in lost-time accidents. | USACE |

Submittal Playbook

- ✓ Developed through partnership with industry
- ✓ Nested with the Partnering Playbook
- ✓ Detail the requirements, challenges, and risk drivers of the construction submittal process for both the contractor and government to provide a shared understanding of obstacles and opportunities
- ✓ How a partnering mindset can expedite and improve the construction submittal process and overcome challenges
- ✓ Introduce and disseminate best practices that have proven to be successful in managing the construction submittal process
 - ✓ Pre-submittal meetings as needed to ensure alignment
 - ✓ Avoid submittal “Ping-Pong”
- ✓ Provide a comprehensive resource that provides information to enable the government and the contractor to streamline, improve, and gain efficiencies in the submittal process

Transition from RMS to CMP

- ✓ USACE is transitioning from the Resident Management System (RMS) to the Construction Management Platform (CMP)
 - ✓ Fort Worth will start the transition in March 2027
- ✓ CMP is based on Kahua
- ✓ CMP will modernize our processes by providing:
 - ✓ • Full mobile capability for field data entry, enabling real-time site capture to improve safety and quality outcomes.
 - ✓ • Improved data quality, project accuracy, and visualization through integrated dashboards and 3-D model (BIM) support.
 - ✓ • Increased project productivity and significant time savings for our teams through full PDT in-system collaboration.
 - ✓ • A consistent, integrated experience for staff, contractors, and stakeholders.

Thank You

Building a
stronger
Government
Industry
Partnership



Fort Worth District (SWF) U.S. Army Corps of Engineers (USACE)



SWF OSBP *Website*

Click on
Castle
to
download
monthly

Opportunity Forecast



Updated after the 4th of every month.

View **Opportunity Forecast**, **FAQs** (***Frequently Asked Questions***) and **Events**
Request Capability Briefing (SB 1st priority / LB **must** include SB)