

Sponsor: Westervelt Ecological Services
Bank: Succor Creek Mitigation Bank
File No.: NWW-2024-00401
PLSS: Sec. 8, T. 3 N, R. 5 W
Lat: 43.60860° N, Long: -116.96659° W
Sheet 1 of 7
Date: January 14, 2025

Succor Creek Mitigation Bank

- Bank Location
- HUC 6 (Middle Snake Boise)
- HUC 8



Miles
1:1,650,000
PCS: NAD 1983 2011 UTM Zone 11N
Date Saved: 11/12/2024 12:56 PM

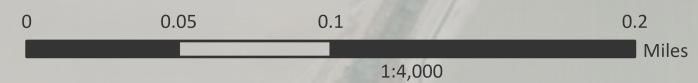
Figure 2. Basin and Sub-basin Map

Sponsor: Westervelt Ecological Services
Bank: Succor Creek Mitigation Bank
File No.: NWW-2024-00401
PLSS: Sec. 8, T. 3 N, R. 5 W
Lat: 43.60860° N, Long: -116.96659° W
Sheet 2 of 7
Date: January 14, 2025



Succor Creek Mitigation Bank

-  Property Boundary (72.4 Acres)
-  Middle Snake Boise (HUC 170501)

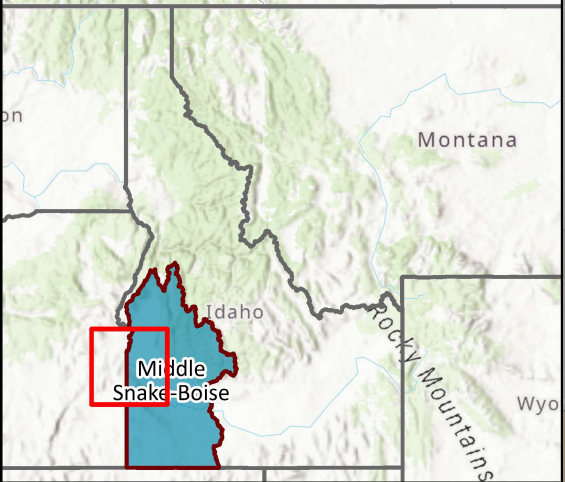
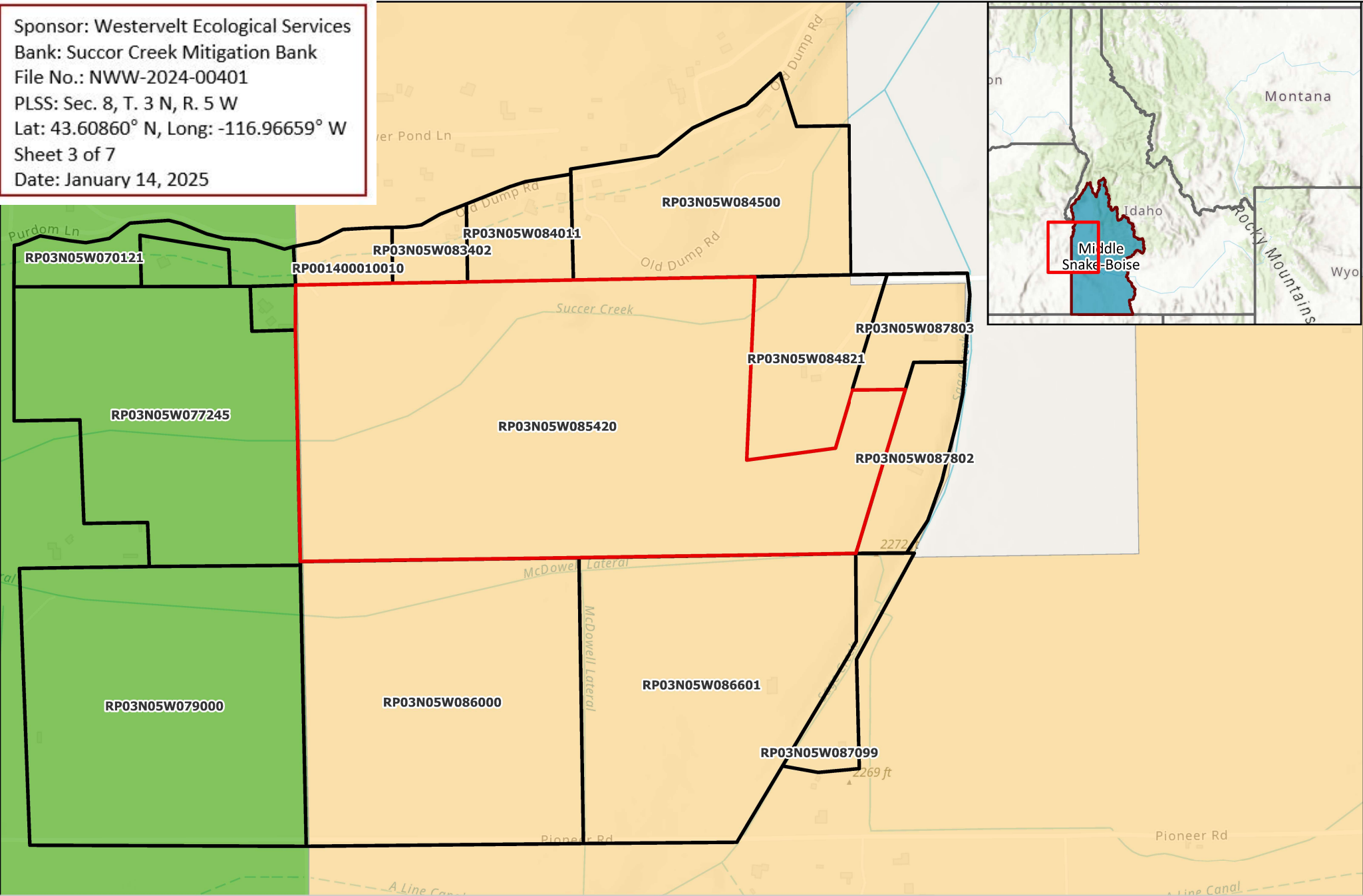


Map Units: Meter
PCS: NAD 1983 UTM Zone 11N
GCS: GCS North American 1983
Datum: North American 1983
Projection: Transverse Mercator
Date Saved: 7/18/2024 1:07 PM



Figure 1. Vicinity Map

Sponsor: Westervelt Ecological Services
Bank: Succor Creek Mitigation Bank
File No.: NWW-2024-00401
PLSS: Sec. 8, T. 3 N, R. 5 W
Lat: 43.60860° N, Long: -116.96659° W
Sheet 3 of 7
Date: January 14, 2025



Succor Creek Mitigation Bank

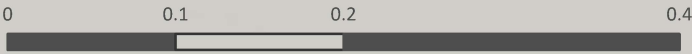
Property Boundary

Adjacent Parcels

Zoning Classification

Agricultural

Multi-use



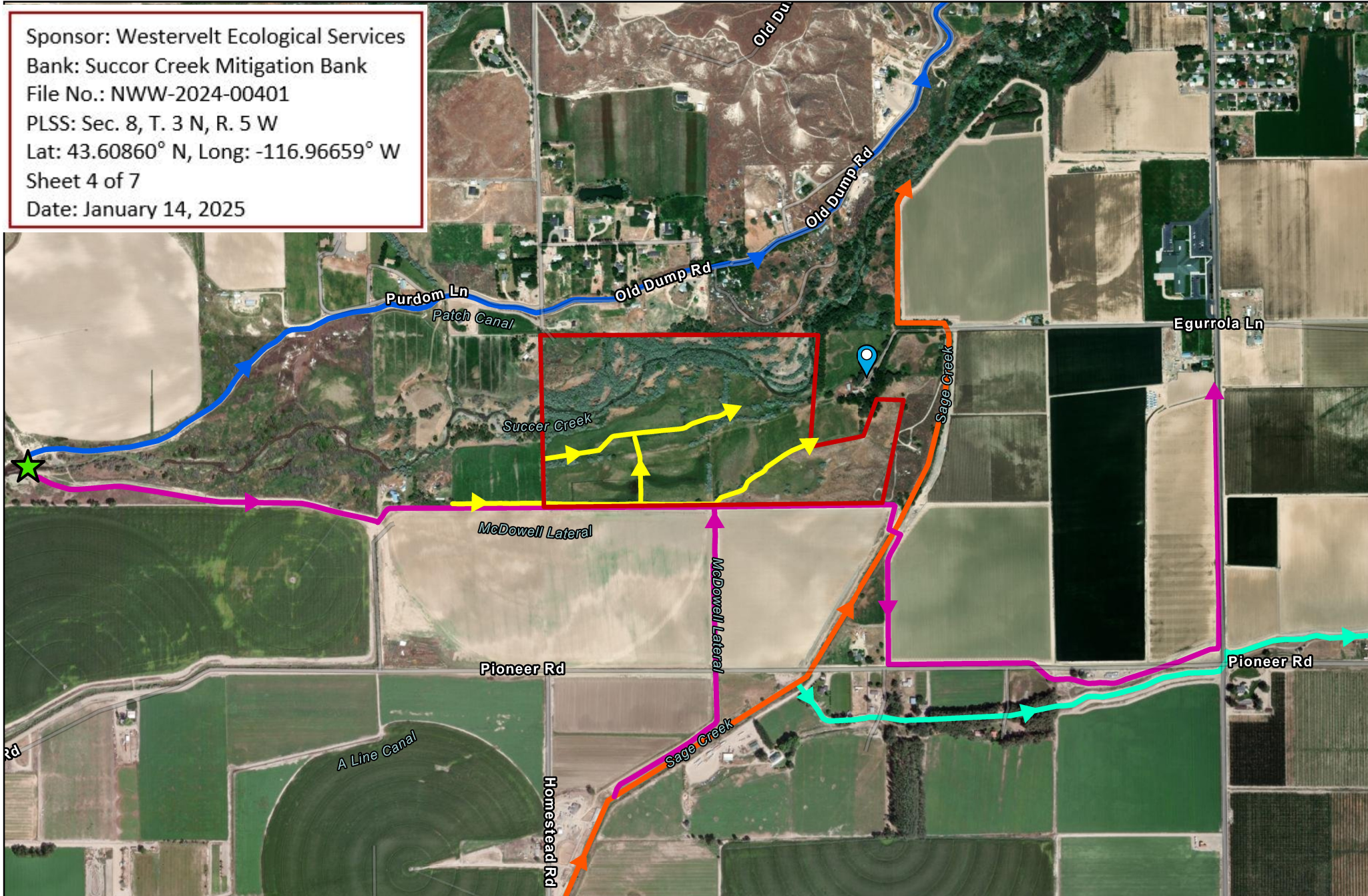
Miles
1:7,250

PCS: NAD 1983 2011 UTM Zone 11N
GCS: GCS NAD 1983 2011
Projection: Transverse Mercator
Datum: NAD 1983 2011

Date Saved: 12/15/2024 12:37 PM



Sponsor: Westervelt Ecological Services
 Bank: Succor Creek Mitigation Bank
 File No.: NWW-2024-00401
 PLSS: Sec. 8, T. 3 N, R. 5 W
 Lat: 43.60860° N, Long: -116.96659° W
 Sheet 4 of 7
 Date: January 14, 2025



Succor Creek Mitigation Bank

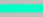

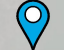
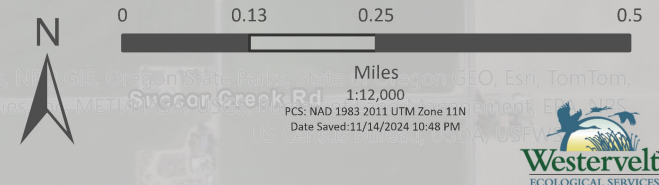
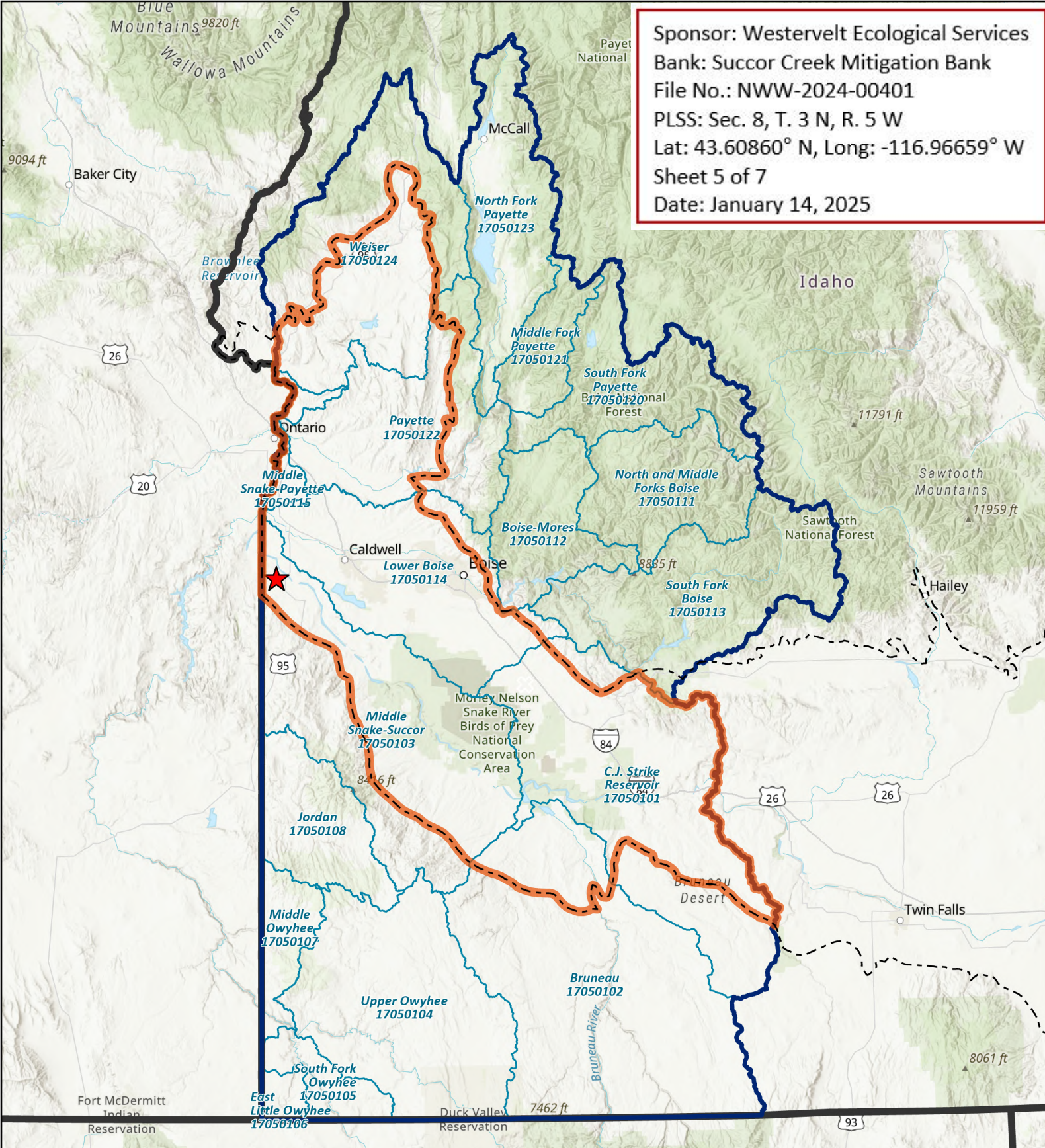
- | | | | | | |
|--|--------------------------------|---|----------------|---|------------------|
|  | Property Boundary (72.4 Acres) |  | Drainage Ditch |  | A-Line Canal |
|  | Diversion Dam |  | Sage Creek |  | McDowell Lateral |
|  | Property Access Points |  | Patch Canal | | |

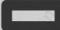


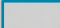

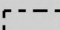
Figure 4. Water Control Features and Property Access

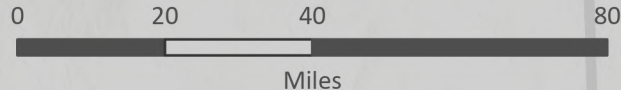


Sponsor: Westervelt Ecological Services
 Bank: Succor Creek Mitigation Bank
 File No.: NWW-2024-00401
 PLSS: Sec. 8, T. 3 N, R. 5 W
 Lat: 43.60860° N, Long: -116.96659° W
 Sheet 5 of 7
 Date: January 14, 2025



Succor Creek Mitigation Bank

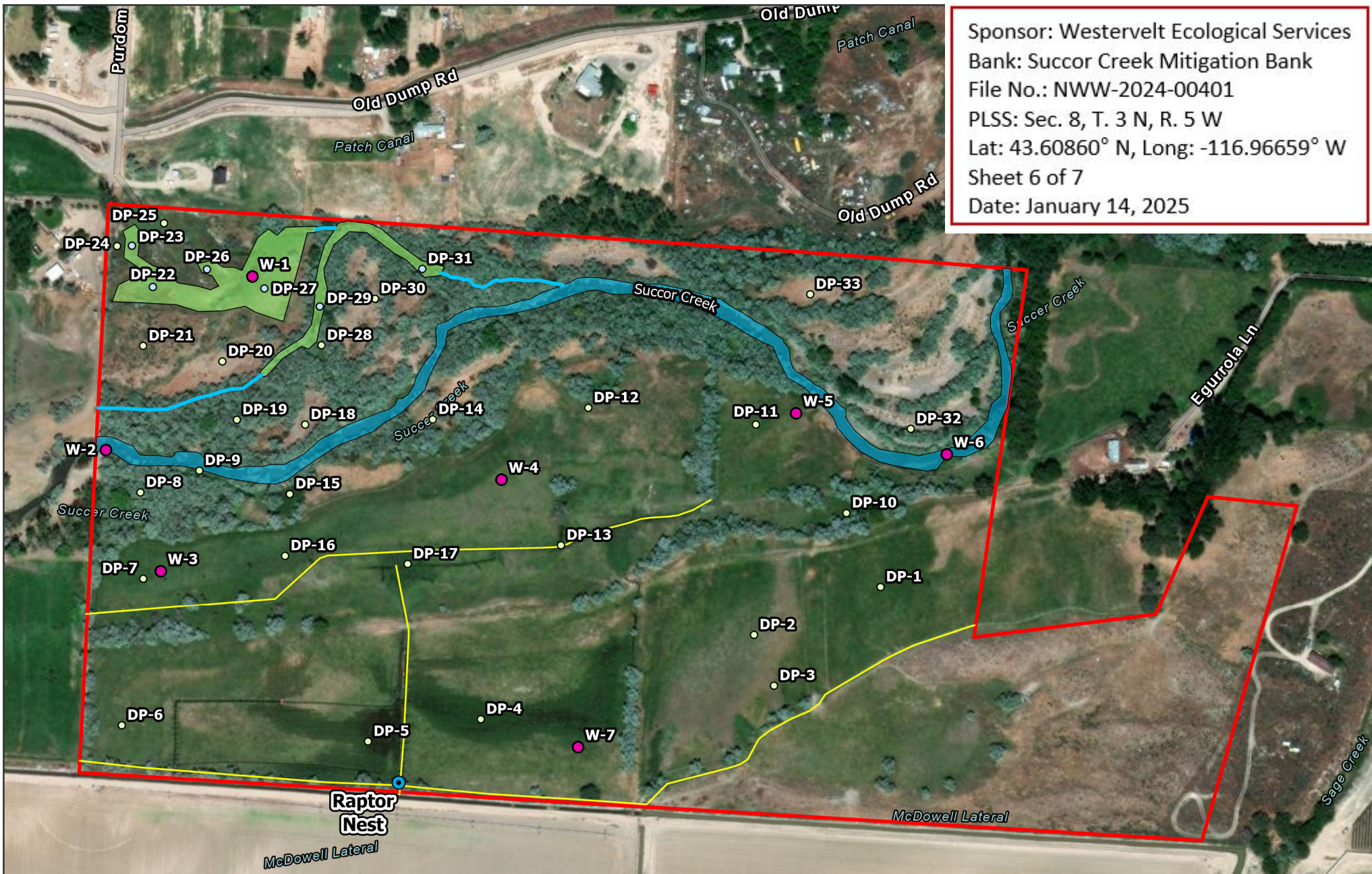
-  State Boundary
-  Proposed Service Area
-  HUC 6 (Middle Snake-Boise)
-  HUC 8
-  Succor Creek Mitigation Bank Location
-  Snake River Level III Ecoregion



1:1,650,000

PCS: NAD 1983 2011 UTM Zone 11N
 Date Saved: 12/15/2024 8:59 PM





Aquatic Resource Boundary Confirmation Map

Property Boundary

Upland Datapoint

Wetland Datapoint

Monitoring Wells

Drainage Ditch

Intermittent Stream

PEM Wetlands

Succor Creek

Raptor Nest



0 0.03 0.06 0.12 Miles

Scale: 1:3,666

Figure 6. Aquatic Resource Boundary Confirmation Map

Sponsor: Westervelt Ecological Services
Bank: Succor Creek Mitigation Bank
File No.: NWW-2024-00401
PLSS: Sec. 8, T. 3 N, R. 5 W
Lat: 43.60860° N, Long: -116.96659° W
Sheet 7 of 7
Date: January 14, 2025

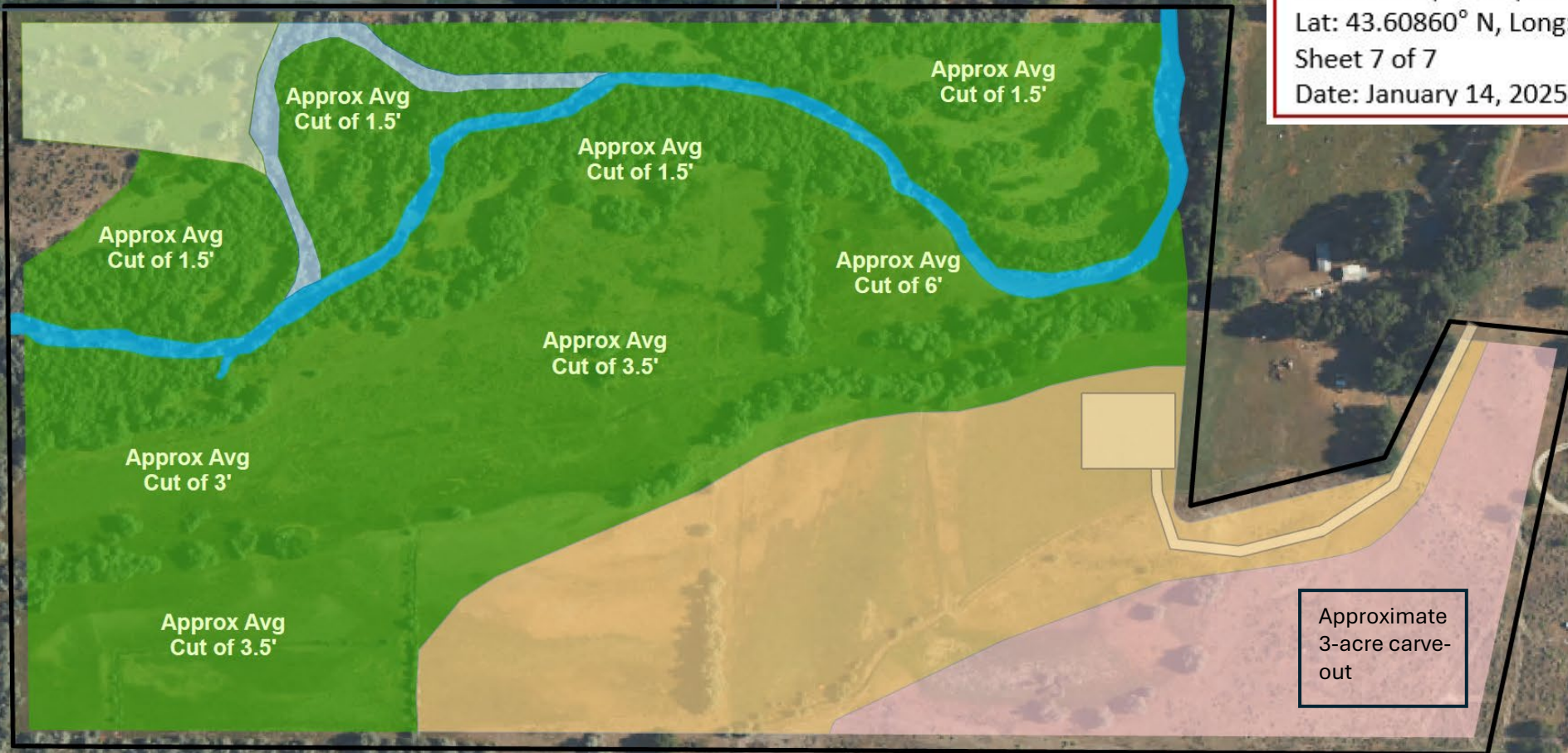


Figure 1 - Succor Creek Prospectus Design



0 75 150 300 450 600 Feet



Legend

- | | |
|----------------------------------|------------------------------|
| Property Boundary (74.5 ac) | Upland Restoration (14.3 ac) |
| Existing Wetland (1.5 ac) | Proposed Spoil (8.0 ac) |
| Re-connected Oxbow (0.8 ac) | Staging Area |
| Re-established Wetland (40.0 ac) | Succor Creek |