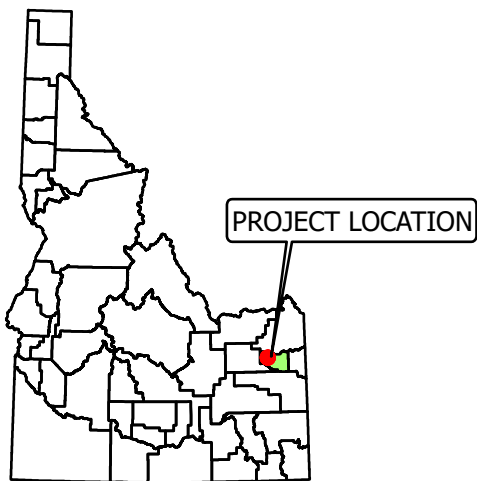
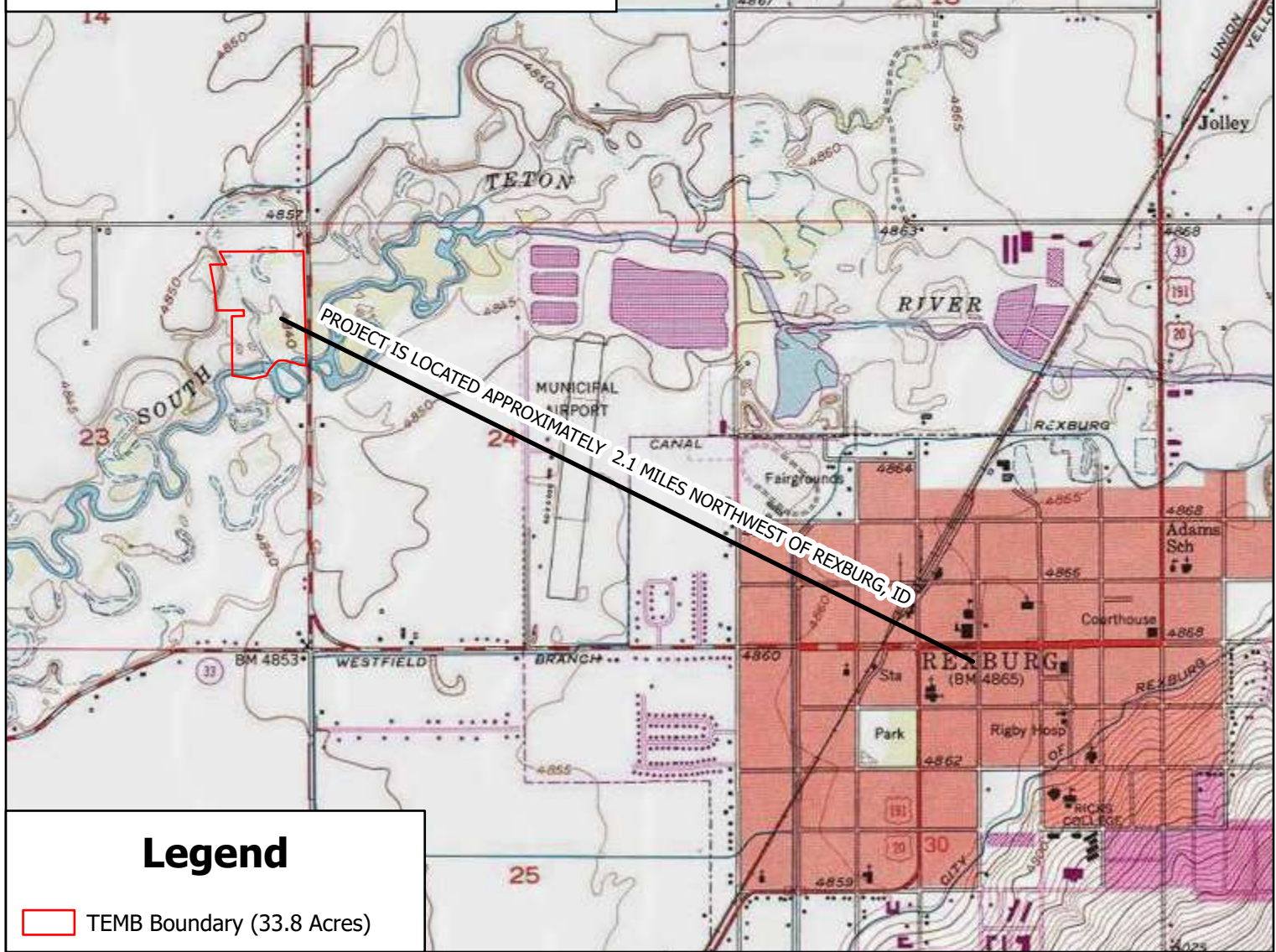


Sponsor: JMB Partnership, LLC
Bank: Teton Edge Mitigation Bank
File No.: NWW-2024-00208
PLSS: Sec. 23, T. 6 N, R. 39 E
Lat: 43.837051 N, Long: -111.821173 W
Sheet 1 of 7
Date: January 13, 2025

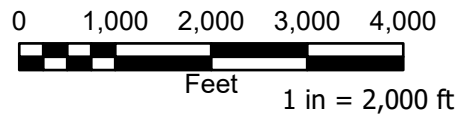


NOT TO SCALE



Legend

TEMB Boundary (33.8 Acres)



TETON EDGE MITIGATION BANK

VICINITY EXHIBIT

MADISON COUNTY, ID

Coord Sys: NAD 1983 2011 StatePlane Idaho East FIPS 1101 Ft US
Vertical Datum: NAVD88 Feet

Date: 12/13/2024
Author: AWS

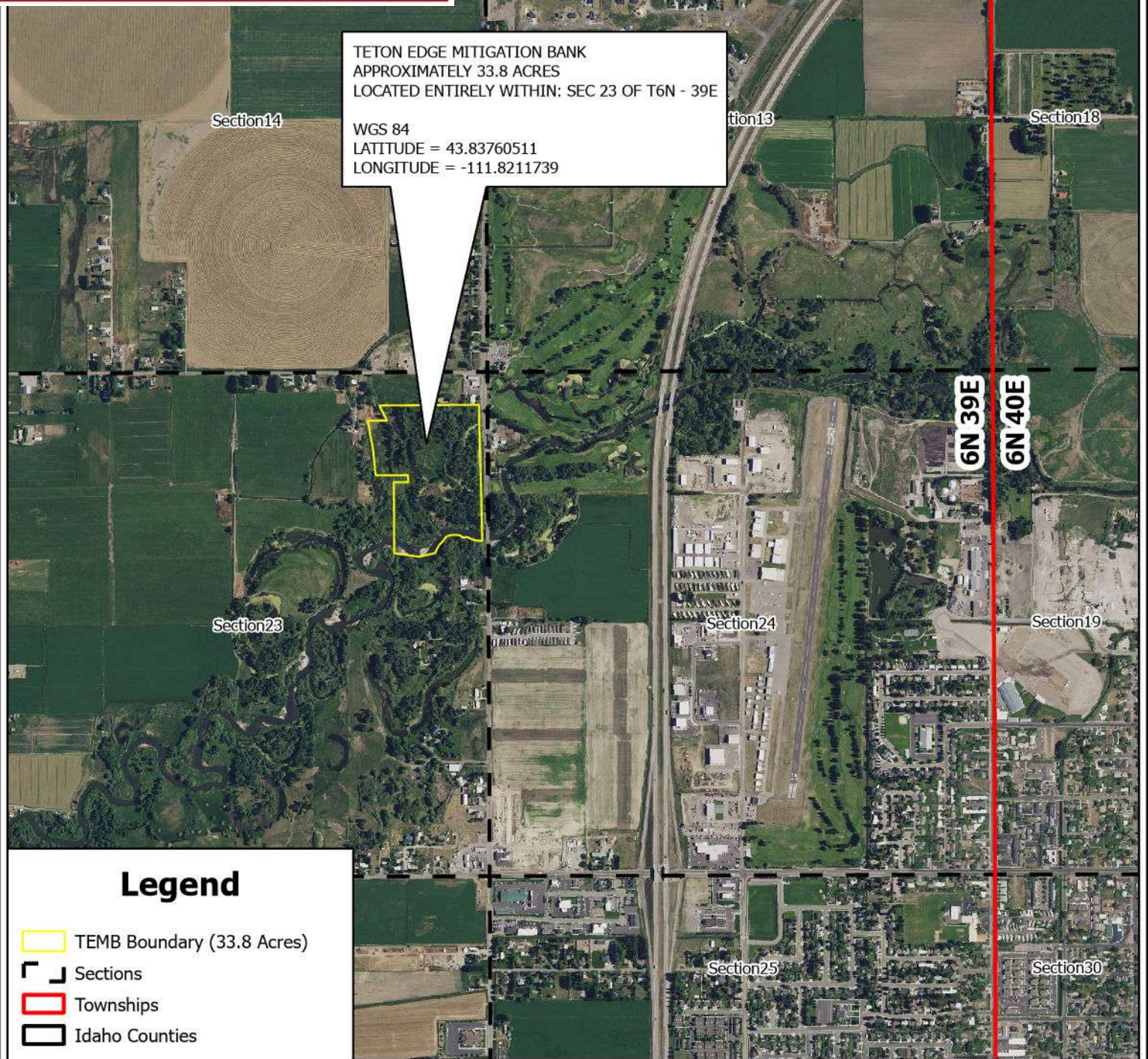
FIGURE 01



Sponsor: JMB Partnership, LLC
Bank: Teton Edge Mitigation Bank
File No.: NWW-2024-00208
PLSS: Sec. 23, T. 6 N, R. 39 E
Lat: 43.837051 N, Long: -111.821173 W
Sheet 2 of 7
Date: January 13, 2025

TETON EDGE MITIGATION BANK
APPROXIMATELY 33.8 ACRES
LOCATED ENTIRELY WITHIN: SEC 23 OF T6N - 39E

WGS 84
LATITUDE = 43.83760511
LONGITUDE = -111.8211739



Legend

- TEMB Boundary (33.8 Acres)
- Sections
- Townships
- Idaho Counties

0 875 1,750 2,625 3,500
Feet
1 in = 1,500 ft



TETON EDGE MITIGATION BANK

PLSS EXHIBIT

MADISON COUNTY, ID

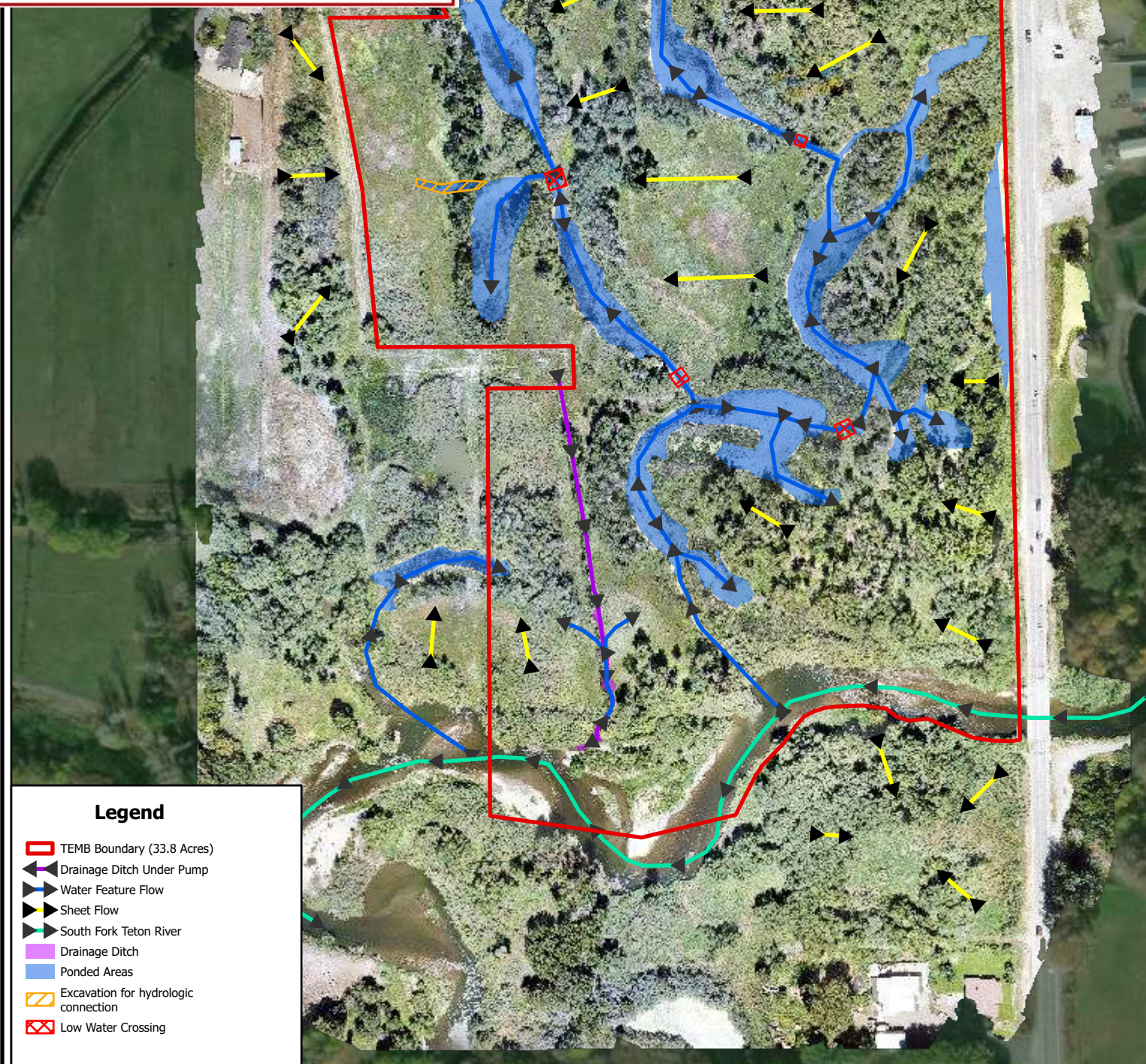
Coord Sys: NAD 1983 2011 StatePlane Idaho East FIPS 1101 Ft US
Vertical Datum: NAVD88 Feet

Date: 12/17/2024
Author: AWS

FIGURE 02



Sponsor: JMB Partnership, LLC
Bank: Teton Edge Mitigation Bank
File No.: NWW-2024-00208
PLSS: Sec. 23, T. 6 N, R. 39 E
Lat: 43.837051 N, Long: -111.821173 W
Sheet 3 of 7
Date: January 13, 2025



Legend

- TEMB Boundary (33.8 Acres)
- Drainage Ditch Under Pump
- Water Feature Flow
- Sheet Flow
- South Fork Teton River
- Drainage Ditch
- Ponded Areas
- Excavation for hydrologic connection
- Low Water Crossing

0 125 250 375 500
Feet

1 in = 250 ft



TETON EDGE MITIGATION BANK

PROPOSED SITE HYDROLOGY EXHIBIT

MADISON COUNTY, ID

Coord Sys: NAD 1983 2011 StatePlane Idaho East FIPS 1101 Ft US

Date: 12/13/2024

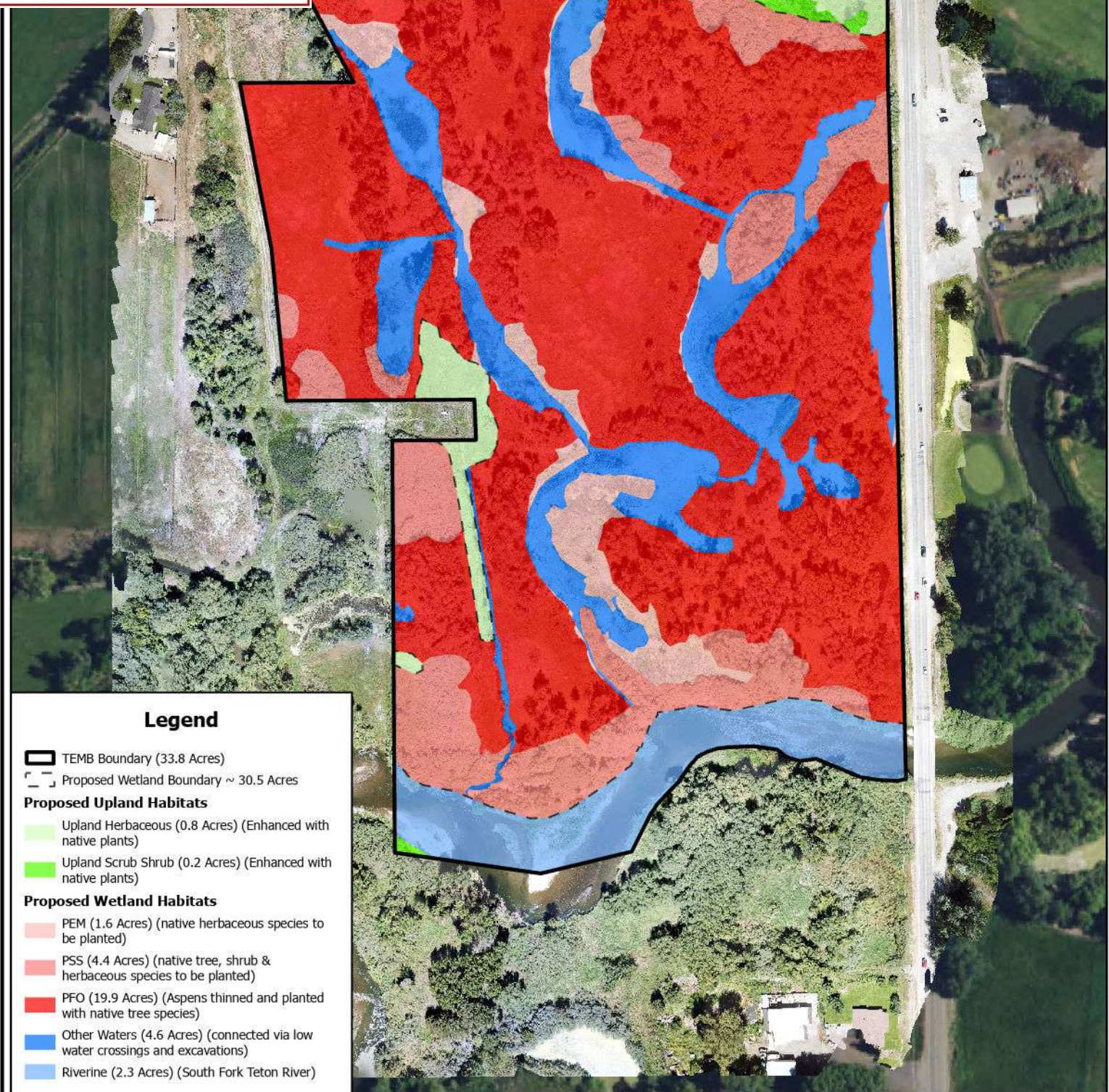
Vertical Datum: NAVD88 Feet

Author: AWS

FIGURE 13A



Sponsor: JMB Partnership, LLC
 Bank: Teton Edge Mitigation Bank
 File No.: NWW-2024-00208
 PLSS: Sec. 23, T. 6 N, R. 39 E
 Lat: 43.837051 N, Long: -111.821173 W
 Sheet 4 of 7
 Date: January 13, 2025



Legend

- TOMB Boundary (33.8 Acres)
- Proposed Wetland Boundary ~ 30.5 Acres

Proposed Upland Habitats

- Upland Herbaceous (0.8 Acres) (Enhanced with native plants)
- Upland Scrub Shrub (0.2 Acres) (Enhanced with native plants)

Proposed Wetland Habitats

- PEM (1.6 Acres) (native herbaceous species to be planted)
- PSS (4.4 Acres) (native tree, shrub & herbaceous species to be planted)
- PFO (19.9 Acres) (Aspens thinned and planted with native tree species)
- Other Waters (4.6 Acres) (connected via low water crossings and excavations)
- Riverine (2.3 Acres) (South Fork Teton River)

0 125 250 375 500
 Feet

1 in = 250 ft



TETON EDGE MITIGATION BANK

PROPOSED HABITAT EXHIBIT

MADISON COUNTY, ID

Coord Sys: NAD 1983 2011 StatePlane Idaho East FIPS 1101 Ft US

Date: 12/19/2024

Vertical Datum: NAVD88 Feet

Author: AWS

FIGURE 15



Sponsor: JMB Partnership, LLC
Bank: Teton Edge Mitigation Bank
File No.: NWW-2024-00208
PLSS: Sec. 23, T. 6 N, R. 39 E
Lat: 43.837051 N, Long: -111.821173 W
Sheet 5 of 7
Date: January 13, 2025



0 125 250 375 500
Feet
1 in = 250 ft



TETON EDGE MITIGATION BANK

PROPOSED MITIGATION TYPE EXHIBIT

MADISON COUNTY, ID

Coord Sys: NAD 1983 2011 StatePlane Idaho East FIPS 1101 Ft US

Date: 12/18/2024

Vertical Datum: NAVD88 Feet

Author: AWS

FIGURE 15A



NOTE: THIS MAP IS FOR PRELIMINARY PLANNING PURPOSES ONLY. NO CIVIL SURVEY HAS BEEN CONDUCTED ON THE SITE.

Non-credit generating upland buffer.

0.25 Acres non-credit generating Utilities ROW

Non-credit generating upland buffer.

Non-credit generating upland buffer.

South Fork Teton River

Legend

- TEMB Boundary (33.8 Acres)
- Proposed 50' Buffer
- Upland Habitats**
 - Upland Herbaceous (0.8 Acres)
 - Upland Scrub-Shrub (0.2 Acres)
- Riverine Preservation**
 - South Fork Teton River (2.3 Acres)
- Potential Easements and Right of Ways**
 - Powerline Right of Way
 - Road Right of Way

Sponsor: JMB Partnership, LLC
 Bank: Teton Edge Mitigation Bank
 File No.: NWW-2024-00208
 PLSS: Sec. 23, T. 6 N, R. 39 E
 Lat: 43.837051 N, Long: -111.821173 W
 Sheet 6 of 7
 Date: January 13, 2025

0 125 250 375 500
 Feet

1 in = 250 ft



TETON EDGE MITIGATION BANK

PROPOSED BUFFER BOUNDARY EXHIBIT

MADISON COUNTY, ID

Coord Sys: NAD 1983 2011 StatePlane Idaho East FIPS 1101 Ft US
 Vertical Datum: NAVD88 Feet

Date: 12/16/2024
 Author: AWS

FIGURE 16



THE TEMB PROPOSED PRIMARY SERVICE AREA WAS DELINEATED USING THE HUC 8 THAT THE SITE IS LOCATED IN (TETON SUBBASIN), UP UNTIL THE CONFLUENCE OF THE CANYON CREEK AND TETON RIVER, AS WELL AS HUC 12 WATERSHEDS THAT ARE WITHIN THE ELEVATION RANGE OF 4,600 FEET TO 5,200 FEET WITHIN THE LOWER HENRYS, IDAHO FALLS, AMERICAN FALLS, BLACKFOOT, AND WILLOW SUBBASINS. THE PROPOSED SECONDARY SERVICE AREA WAS DELINEATED USING THE REMAINDER OF THE TETON SUBBASIN WITHIN IDAHO. THE ELEVATION OF THE PROPOSED SITE IS APPROXIMATELY 4,900 FEET. ELEVATIONS WERE DETERMINED USING USGS LIDAR DATA.

