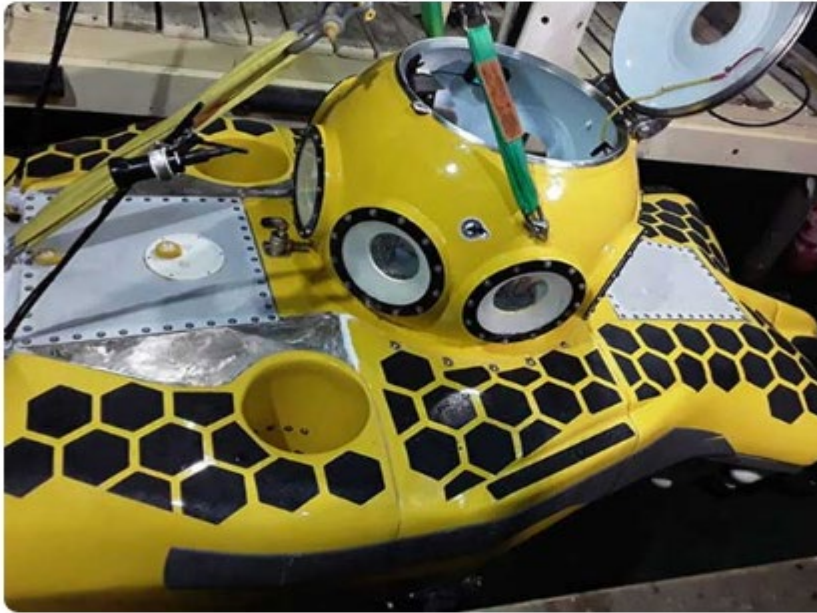




Submersible IDABEL



Design specs:

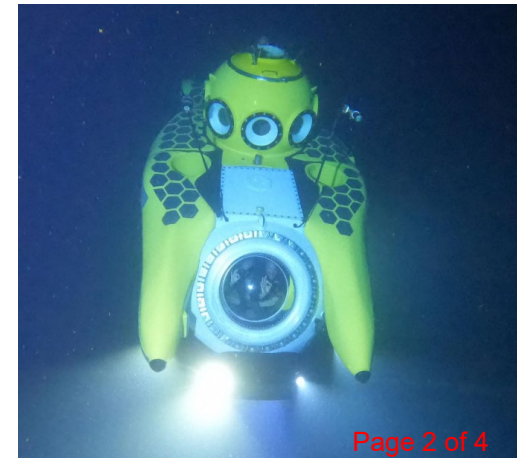
- **Dimensions:** 13 feet long, 6 1/2 feet wide, 7 feet tall
- **Displacement:** 4 tons
- **Capacity:** 1 pilot, 2 passengers
- **Conning Tower Windows:** 9 windows, 2.5 inches thick, 11 inches across truncated cone
- **Passenger Windows:** 30 inch diameter dome and 15 inch flat window
- **Design Depth:** 3000 feet
- **Max Depth to Date:** 2660 feet (1/2 mile + 40 feet)
- **Batteries:** 4 separate banks of lithium iron phosphate
- **Range:** up to 10 miles, but 2-3 miles under normal operations
- **Propulsion:** 6 motors, 1.1 HP each, 4 rear and 2 vertical thrusters
- **Dives Made:** over 1800

Idabel's features include:

- 30-inch diameter viewport for her passengers
- 11 powerful lights, including one positional
- Nine viewports for the pilot so he can see in every direction
- Comfortable bench seating for extended dives

Safety features include:

- Twin ballast compartments
- Twin high-pressure air systems
- Fully redundant propulsion systems with no rudder, dive planes or other moving parts to jam
- Two days of emergency life support
- 700 pound drop weight





Deepsea Submarine Idabel

The vehicle is a one-of-a-kind deep diving submersible designed and custom-built for her exact location on [Roatan, Honduras](#). The sub, which is the first in history constructed of three different sized spheres, is designed to safely transport three people to 3,000 feet (915 meters) below sea level.

The submersible is named "Idabel" in honor of the town in Oklahoma where it was born, and whose inhabitants were more than helpful in the process.



No part of a report of a marine casualty investigation shall be admissible as evidence in any civil or administrative proceeding, other than an administrative proceeding initiated by the United States. 46 U.S.C. §6308.

