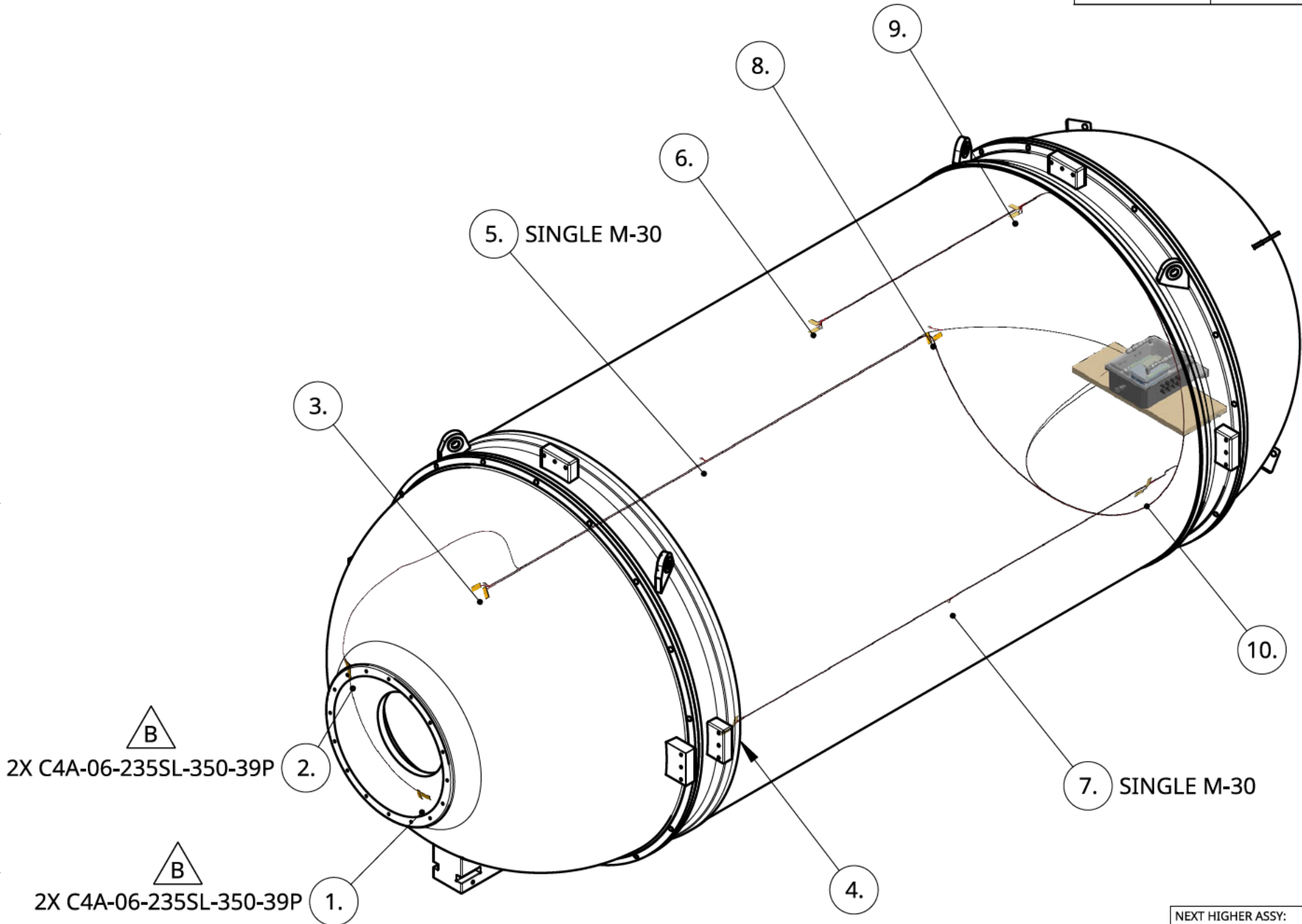


REVISIONS			
REVISION	DESCRIPTION	DATE	APPROVER
A	INITIAL RELEASE	02/02/2021	
B	SENSOR LAYOUT CHANGE	02/16/2021	



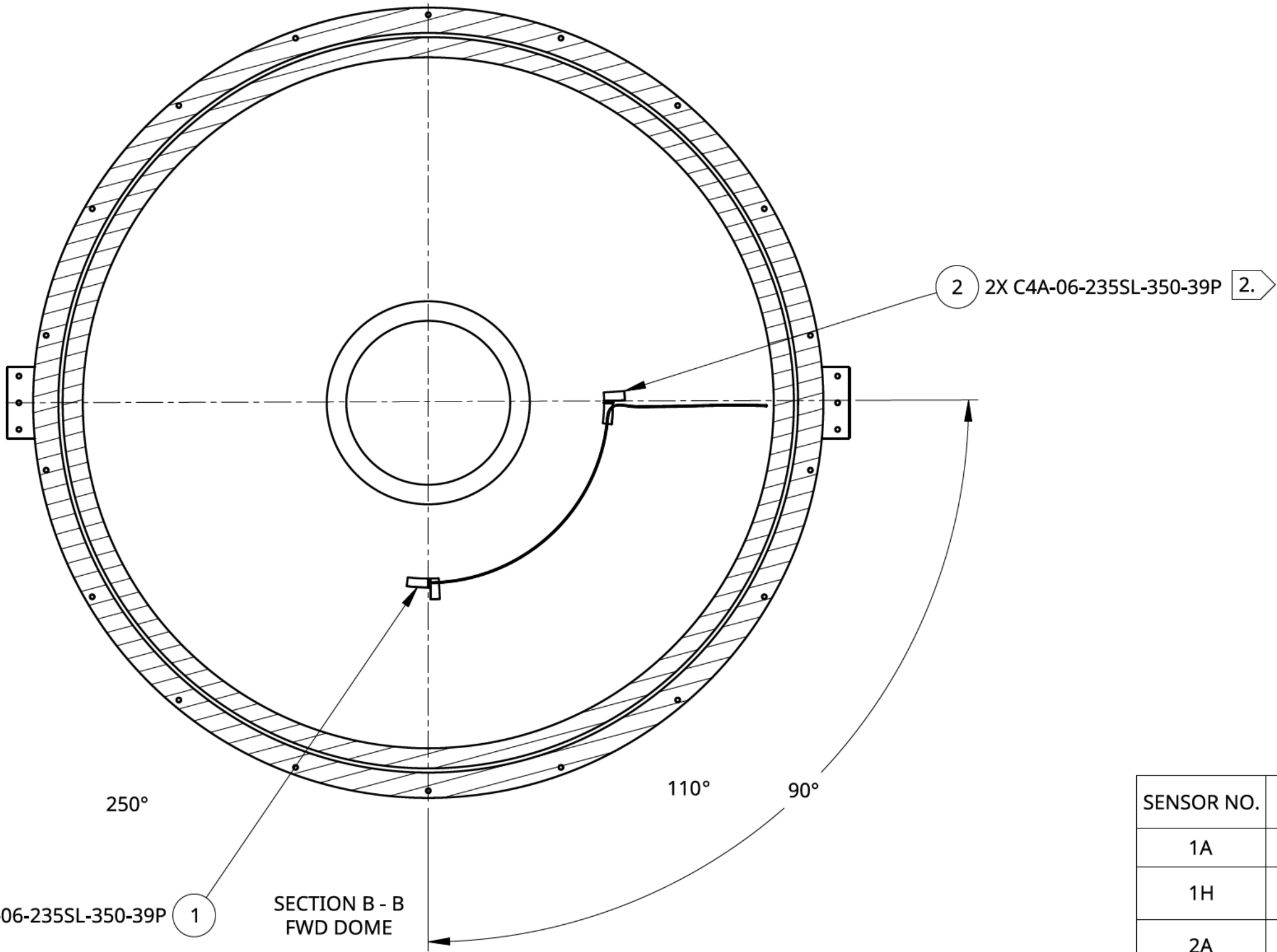
2. REFERENCE FILE-0001097 FOR DOME SENSOR LOCATION.
1. APPLY 3M SILICONE SEAL 08029 TO ALL SENSORS.

NOTES:

NEXT HIGHER ASSY:	 THIS DOCUMENT CONTAINS CONFIDENTIAL AND PROPRIETARY INFORMATION THAT CANNOT BE REPRODUCED OR DIVULGED, IN WHOLE OR IN PART, WITHOUT WRITTEN AUTHORIZATION FROM OCEANGATE, INC.	OCEANGATE, INC. WWW.OCEANGATE.COM		
DOTF		TITLE DOTF SENSOR LAYOUT DOTF COMPONENT - ELECTRICAL		
DO NOT SCALE DRAWING		SIZE B	DWG NO. ASM-0001095	REV. B
THIRD ANGLE PROJECTION	DRAWN: [REDACTED] CHECKED: [REDACTED] APPROVED: [REDACTED]	DATE: 11/16/2020	DATE: 02/16/2021	SCALE NTS
		WEIGHT N/A	SHEET 1 of 6	REV. B

CONFIDENTIAL AND PROPRIETARY INFORMATION

REVISIONS
See sheet 1

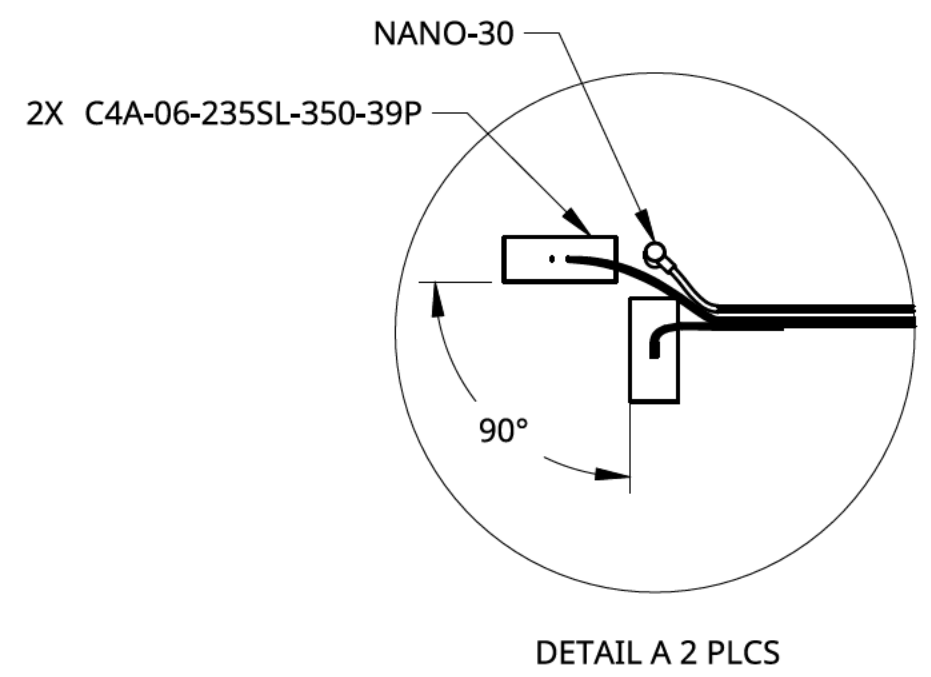
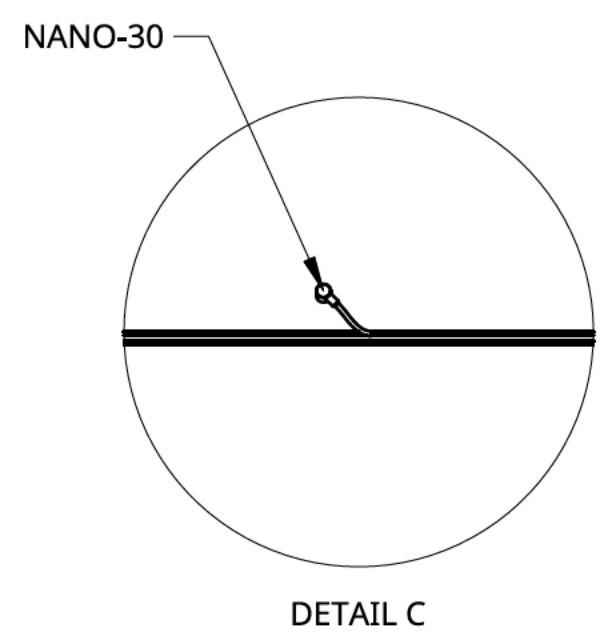
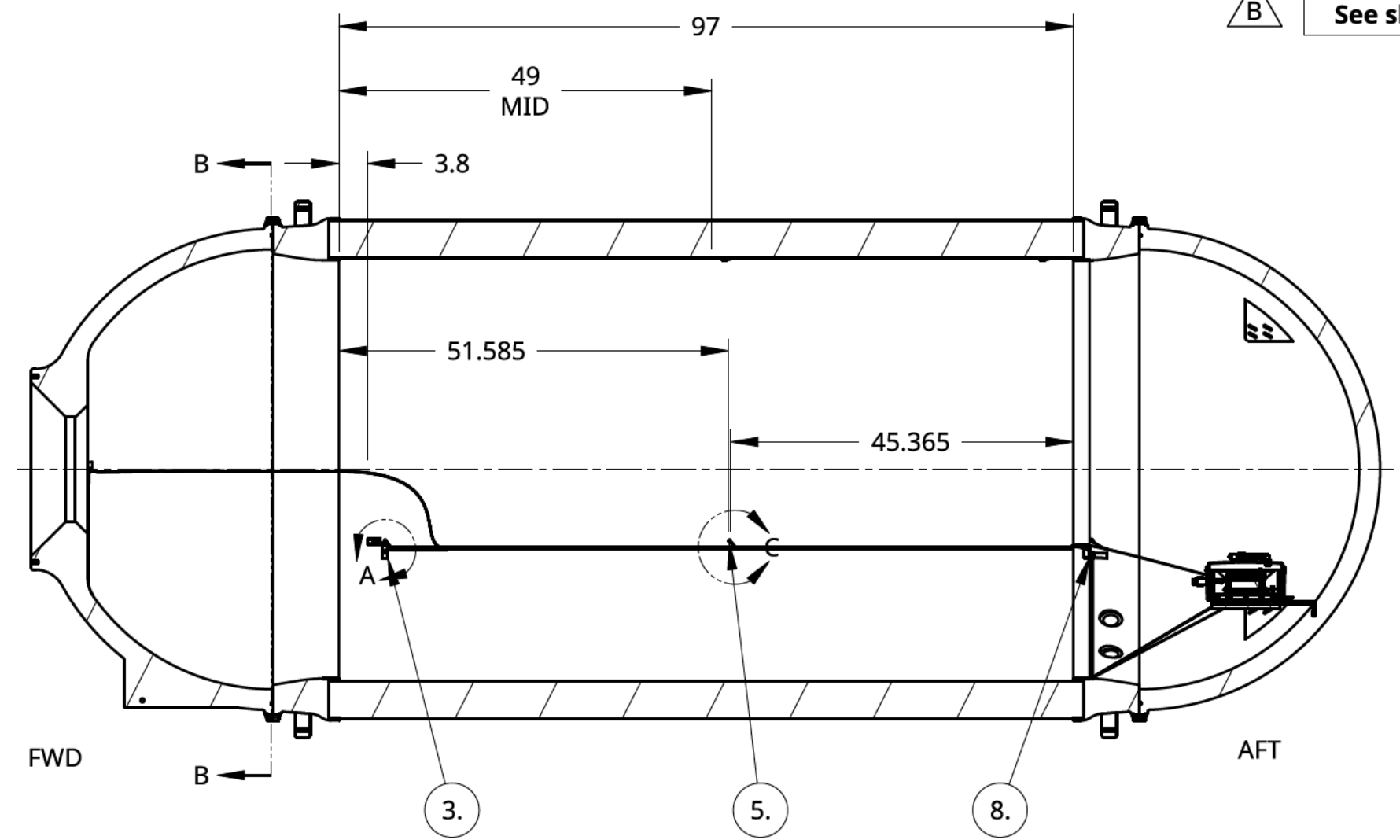
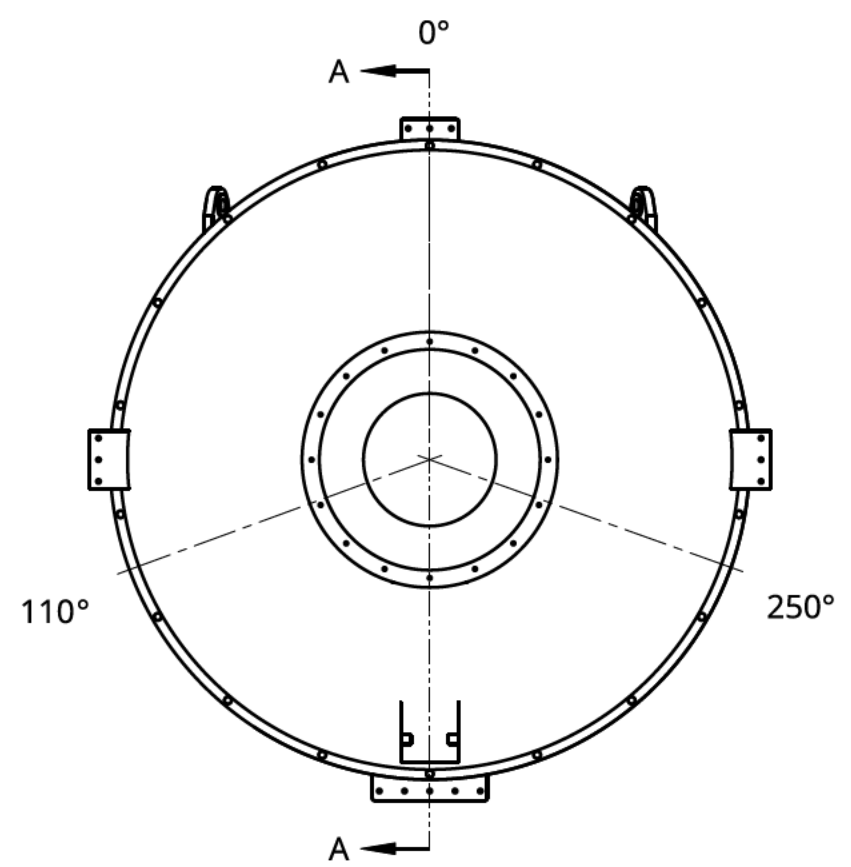


SENSOR NO.	POSISTION	ANGLE
1A	FWD DOME WELD	0°
1H	FWD DOME WELD	90°
2A	FWD DOME WELD	90°
2H	FWD DOME WELD	0°

CONFIDENTIAL AND PROPRIETARY INFOR

DWG NO.	ASM-0001095	SIZE	B	SCALE	NTS	SHEET	2 of 6	REV.	B
---------	-------------	------	---	-------	-----	-------	--------	------	---

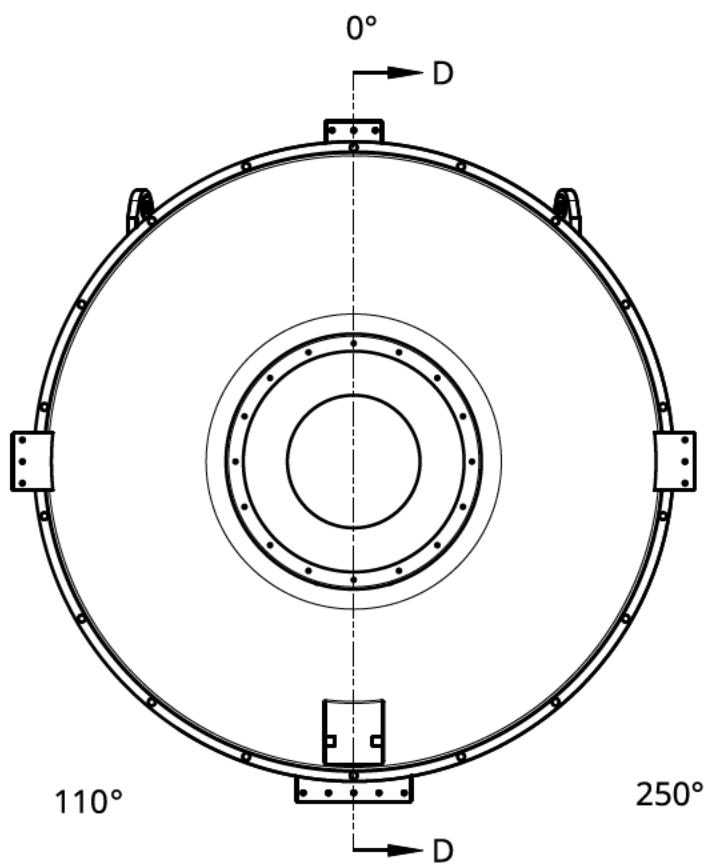
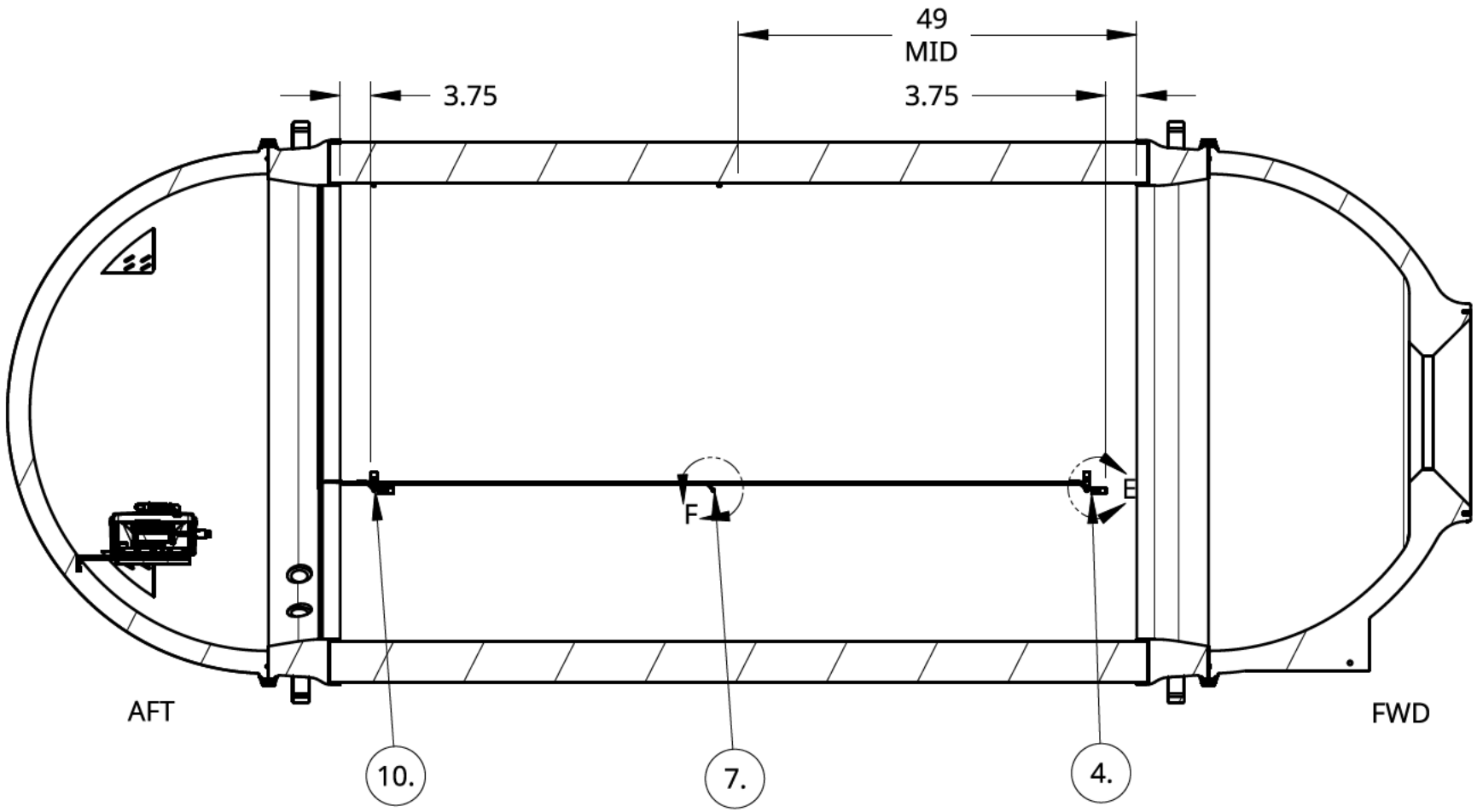
REVISIONS
See sheet 1



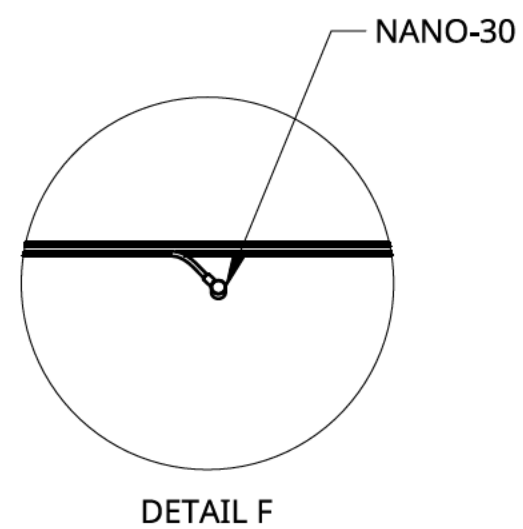
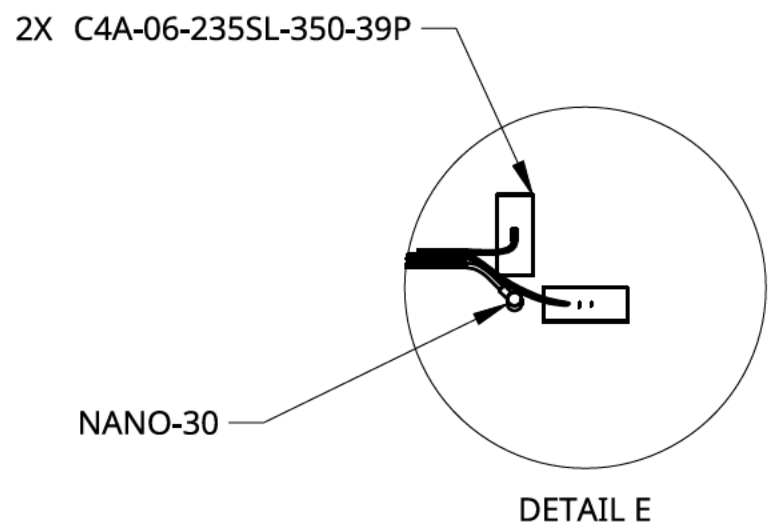
SENSOR NO.	POSISTION	ANGLE
3A	3.75 FROM FWD SEG	110°
3H	3.75 FROM FWD SEG	110°
3AE	3.75 FROM FWD SEG	110°
5AE	MID	110°
8A	AFT TI	110°
8H	AFT TI	110°
8AE	AFT TI	110°

CONFIDENTIAL AND PROPRIETARY INFOR

REVISIONS
See sheet 1



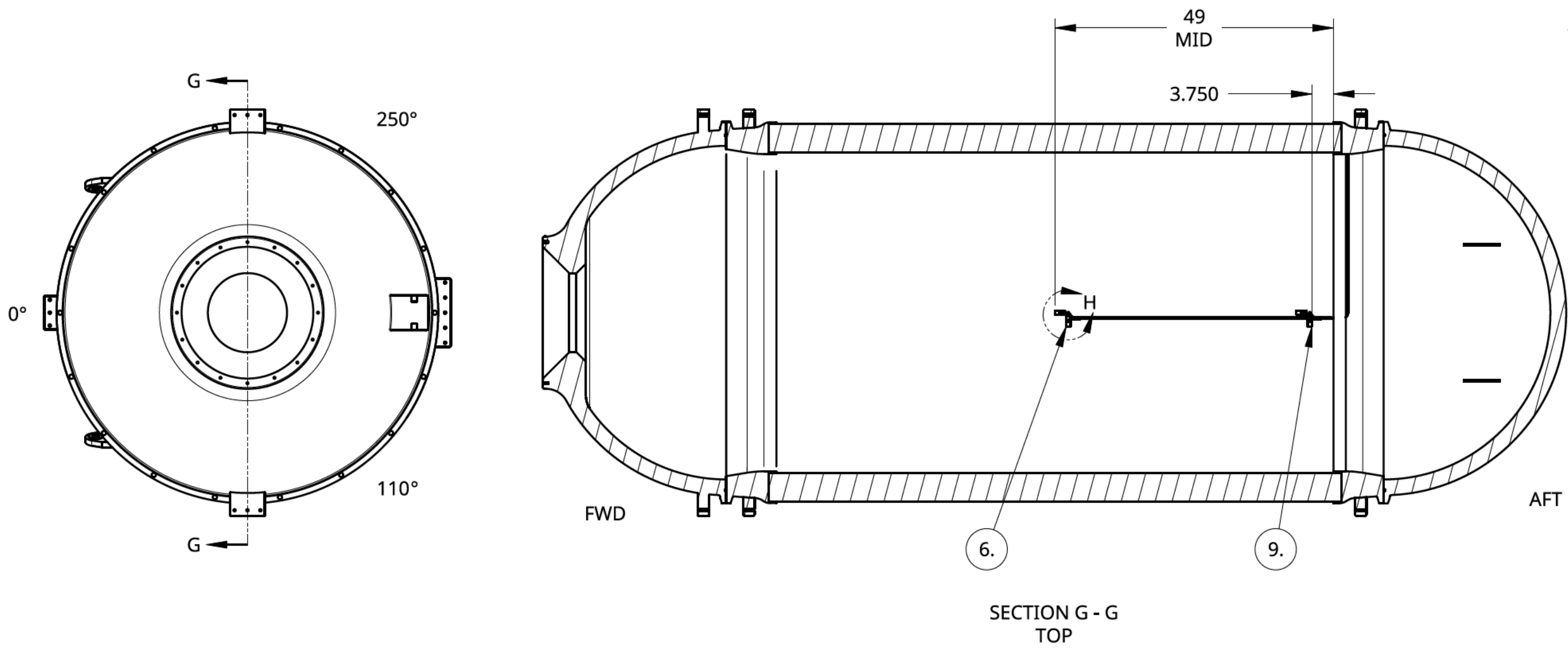
SECTION D - D  
PORT



SENSOR NO.	POSISTION	ANGLE
4A	3.75 FROM FWD SEG	250°
4H	3.75 FROM FWD SEG	250°
4AE	3.75 FROM FWD SEG	250°
7AE	MID	250°
10A	3.75 FROM AFT SEG	250°
10H	3.75 FROM AFT SEG	250°
10AE	3.75 FROM AFT SEG	250°

CONFIDENTIAL AND PROPRIETARY INFORMATION

REVISIONS
See sheet 1



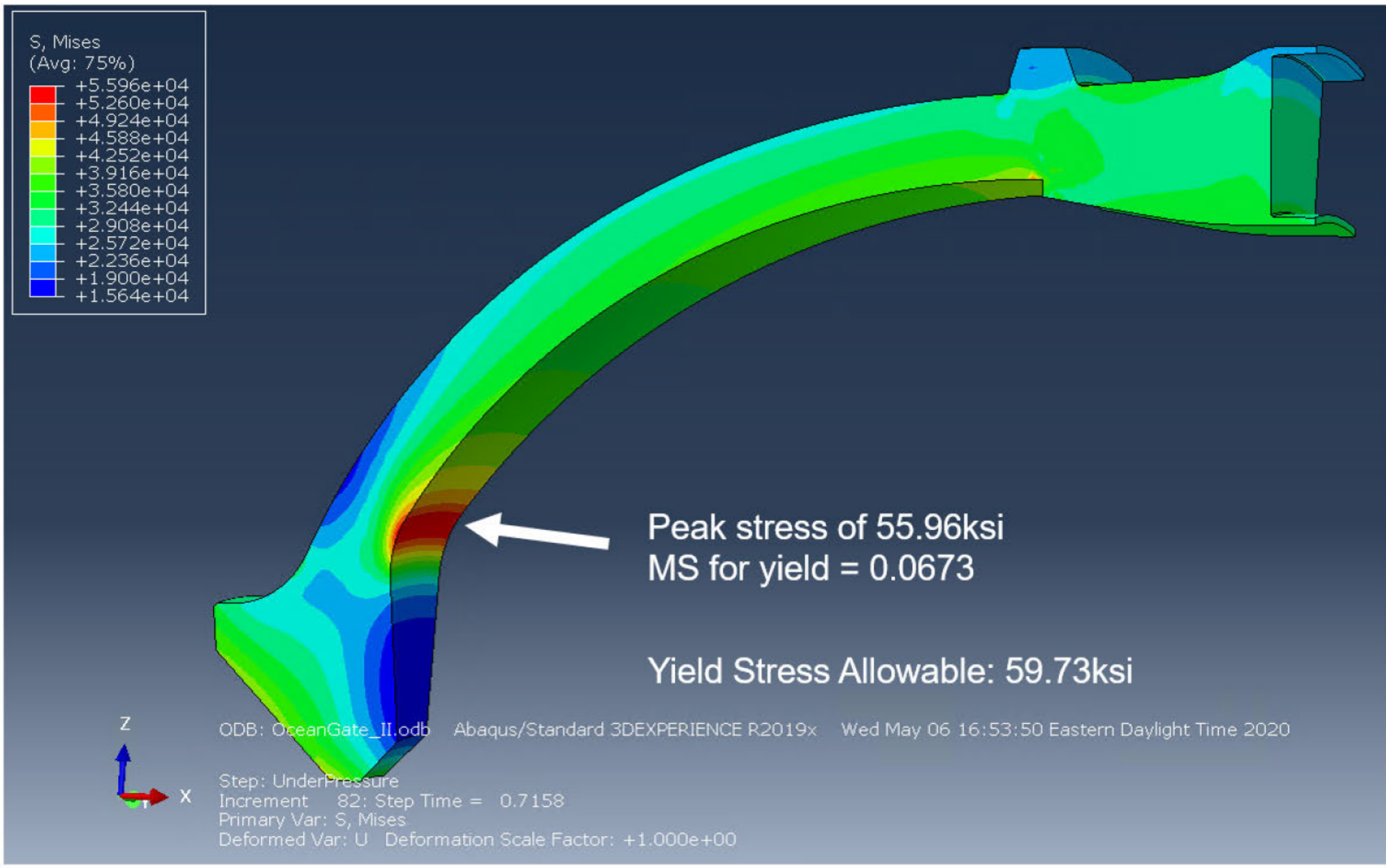
SENSOR NO.	POSISTION	ANGLE
6A	MID	0°
6H	MID	0°
6AE	MID	0°
9A	3.75 FROM AFT SEG	0°
9H	3.75 FROM AFT SEG	0°
9AE	3.75 FROM AFT SEG	0°

CONFIDENTIAL AND PROPRIETARY INFORMATION



REVISIONS
See sheet 1

# Stresses at 4000msw



Work performed by Collier Research under contract with OceanGate. Do not disclose without permission.

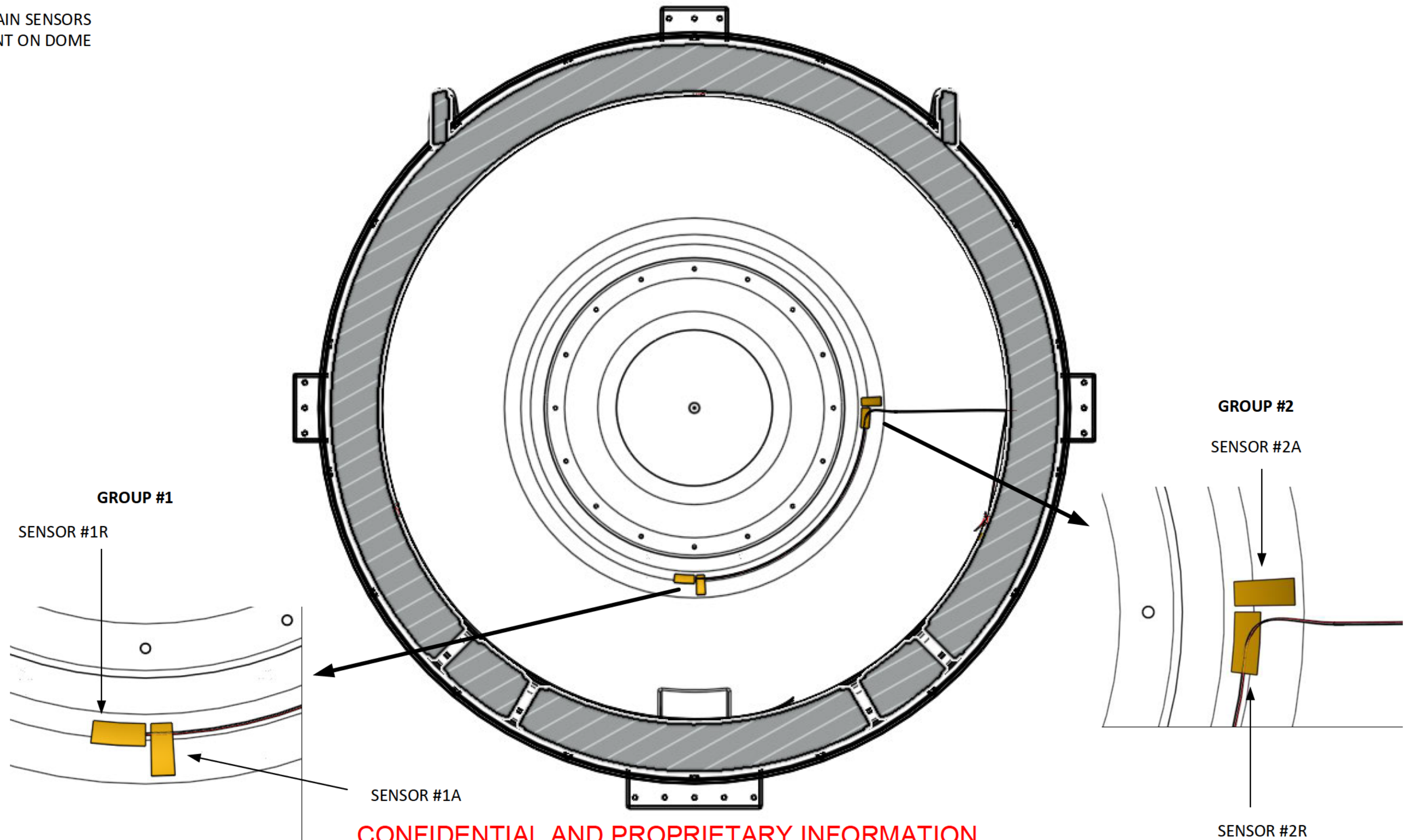
CONFIDENTIAL AND PROPRIETARY INFORMATION

# TITAN – FWD DOME STRAIN SENSORS – LOCATIONS AND NAMES

\*View is looking through sub to FWD DOME from the AFT

SEE ASM-0001095 FOR MODEL

4 STRAIN SENSORS  
MOUNT ON DOME

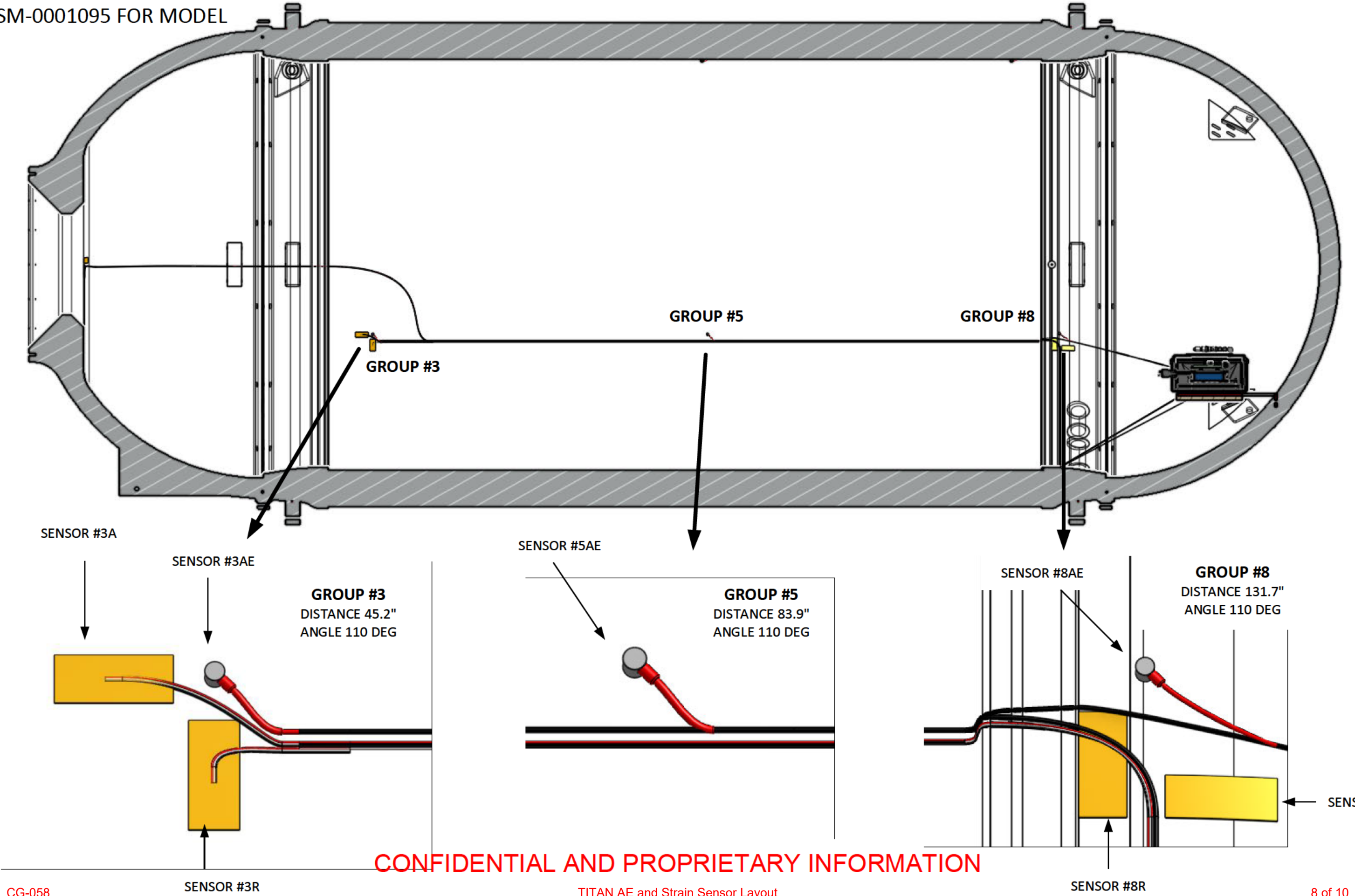


CONFIDENTIAL AND PROPRIETARY INFORMATION



TITAN - STBD SIDE AE AND STRAIN SENSORS – LOCATIONS AND NAMES  
SEE ASM-0001095 FOR MODEL

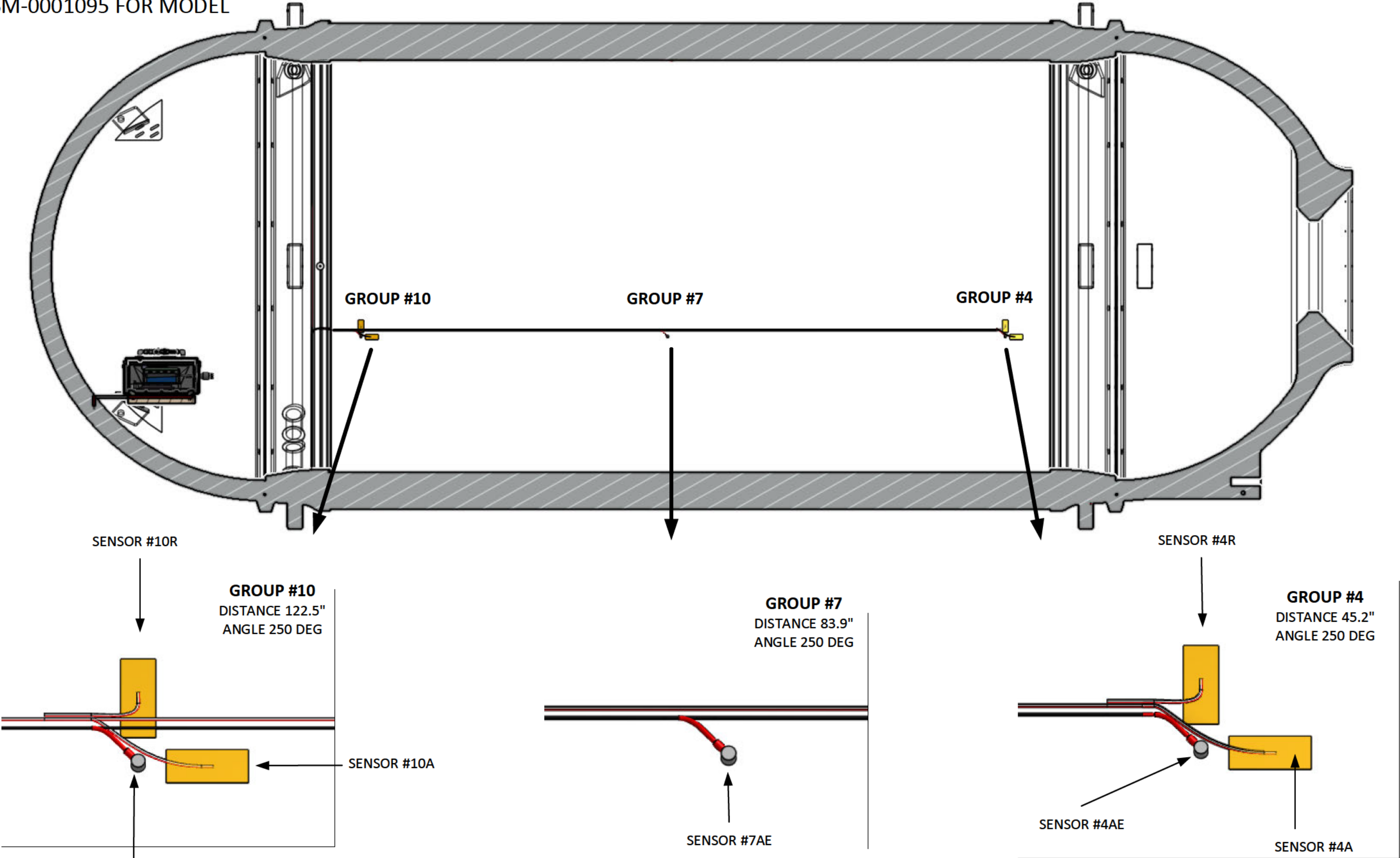
\*View is looking through sub to STBD from the PORT





TITAN - PORT SIDE AE AND STRAIN SENSORS – LOCATIONS AND NAMES  
SEE ASM-0001095 FOR MODEL

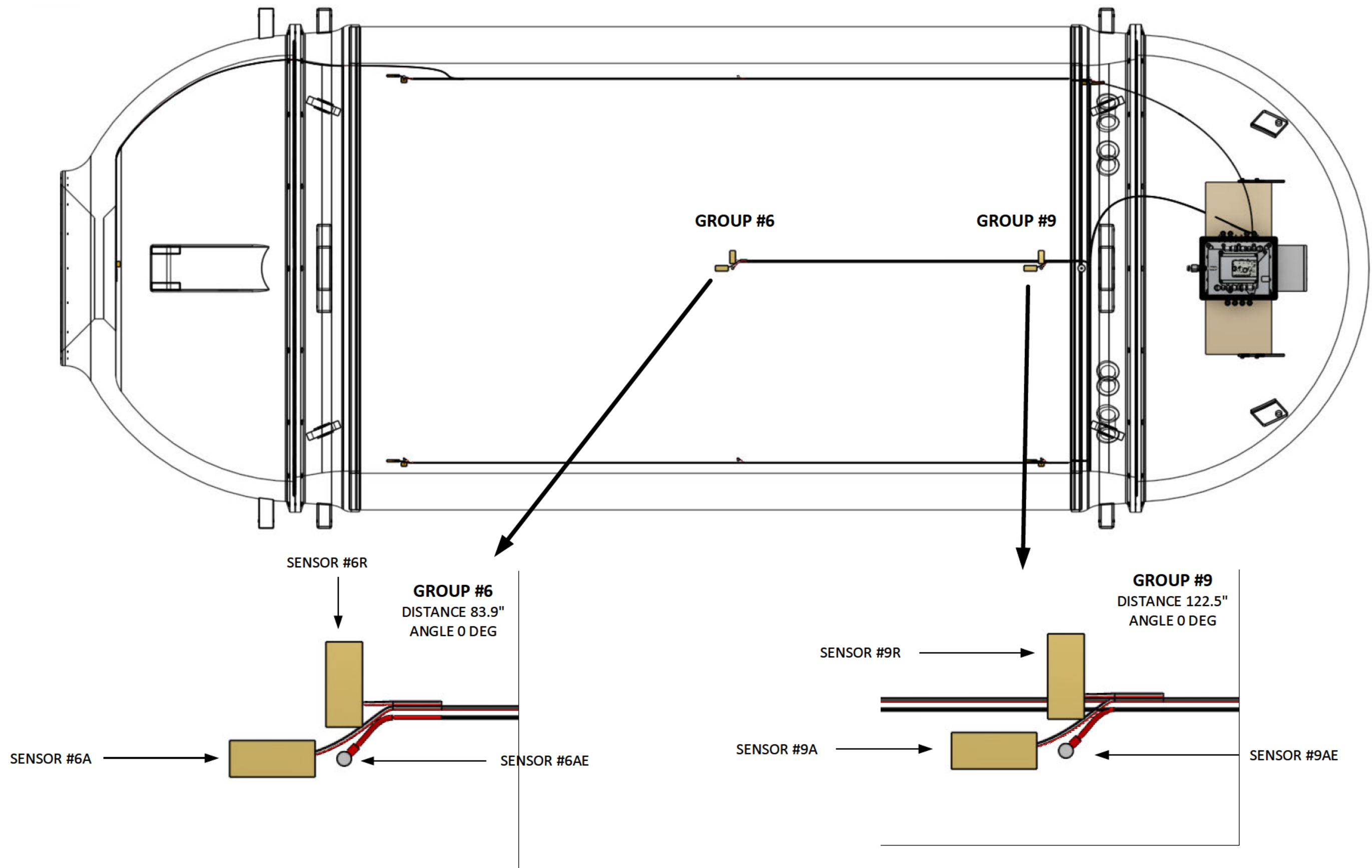
\*View is looking through sub to PORT from the STBD



CONFIDENTIAL AND PROPRIETARY INFORMATION

TITAN - TOP AE AND STRAIN SENSORS – LOCATIONS AND NAMES  
SEE ASM-0001095 FOR MODEL

\*View is looking at sub from above



CONFIDENTIAL AND PROPRIETARY INFORMATION