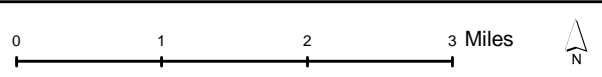




Data: United State Geological Survey, Altamont, Dublin, & Livermore Quadrangle California 7.5'. 2015. Data Downloadable Online. Accessed [09/18/2018].

Legend:
 ★ Study Location



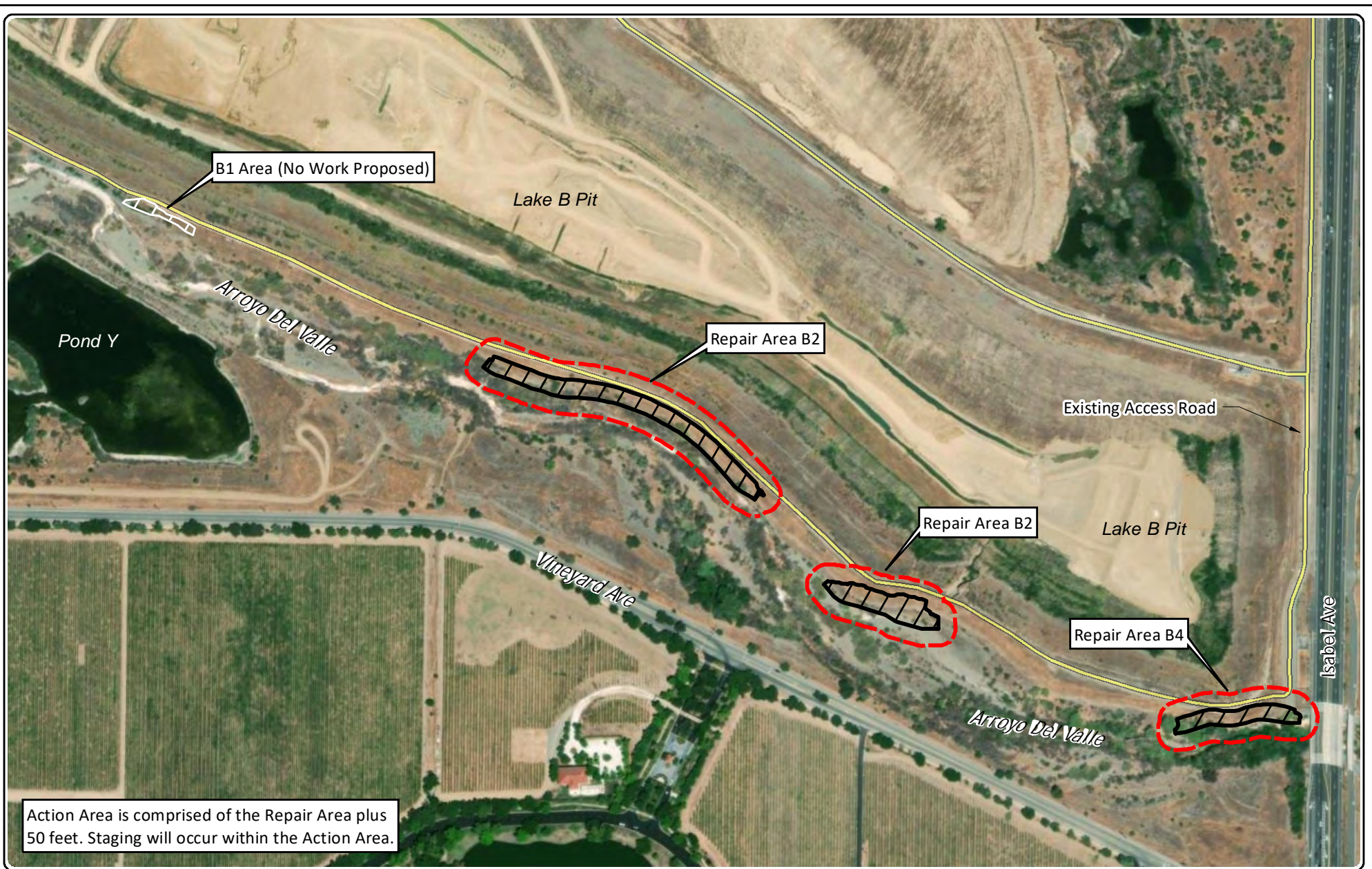
Site and Vicinity Map
 Lake B Reach
 Eliot Quarry SMP-23
 CEMEX Construction Materials Pacific, LLC.

Figure 1

9/29/2023

Disclaimer: The data was mapped for planning purposes only. No liability is assumed for accuracy of the data shown.





Source: Esri, Maxar, Earthstar Geographics, and the GIS User Community

Legend:

- Action Area
- Repair Area
- Existing Access Road

0 200 400 800 Feet

↑
N

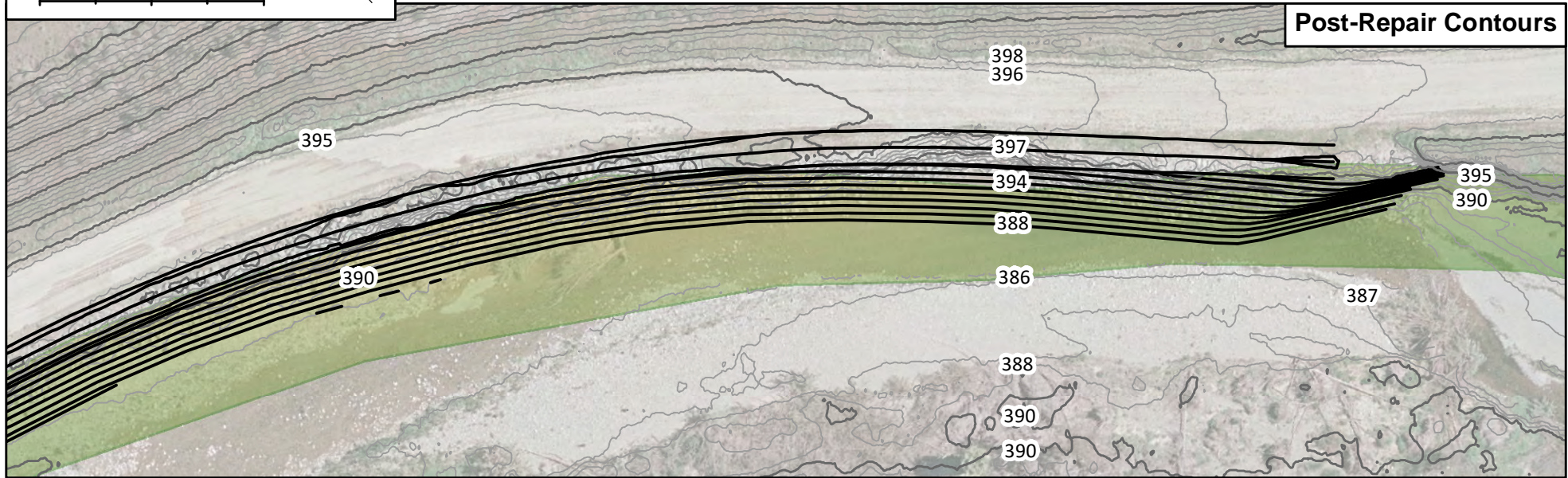
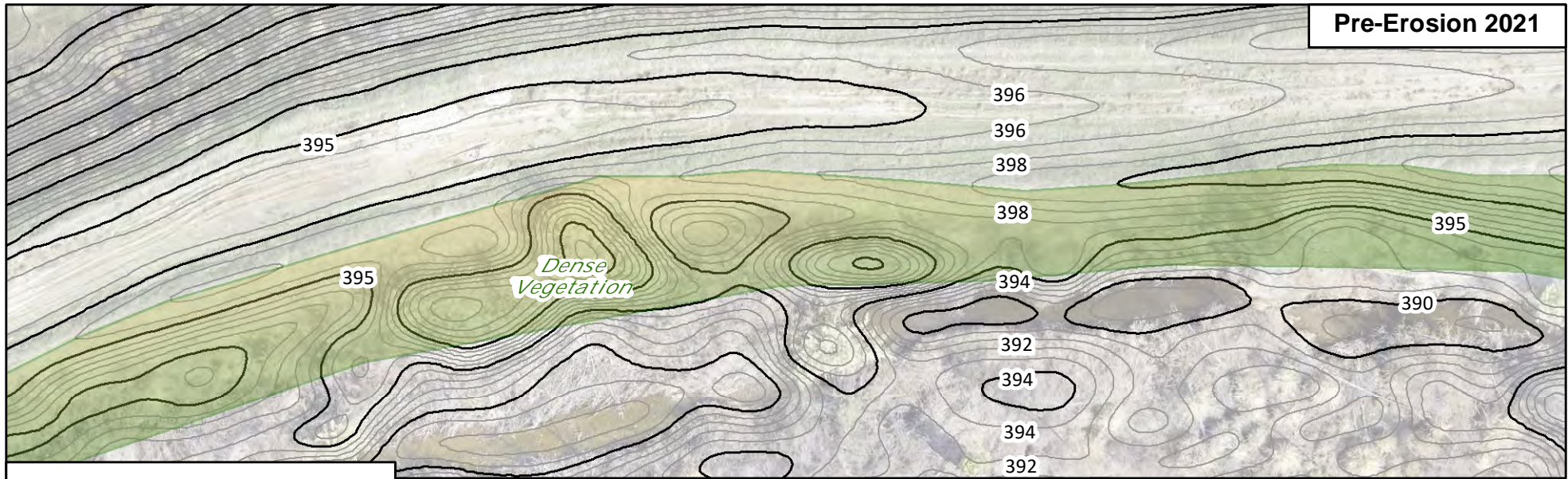
Aerial View Map
 Lake B Long-Term Bank Stabilization
 Cemex Construction Materials Pacific, LLC.
 Alameda County, California

Figure 2

9/12/2024

Disclaimer: The data was mapped for planning purposes only. No liability is assumed for accuracy of the data shown.





Aerial and topographic survey generated using Kespry Inc. systems, dated 11-5-2021 (top) and by Vertical Mapping Aerial, April 2024 (bottom).

Legend:

- Approx. Footprint of Pre-Erosion Bank
- Existing Contour 1'
- Existing Contour 5'
- Proposed Grading Contours

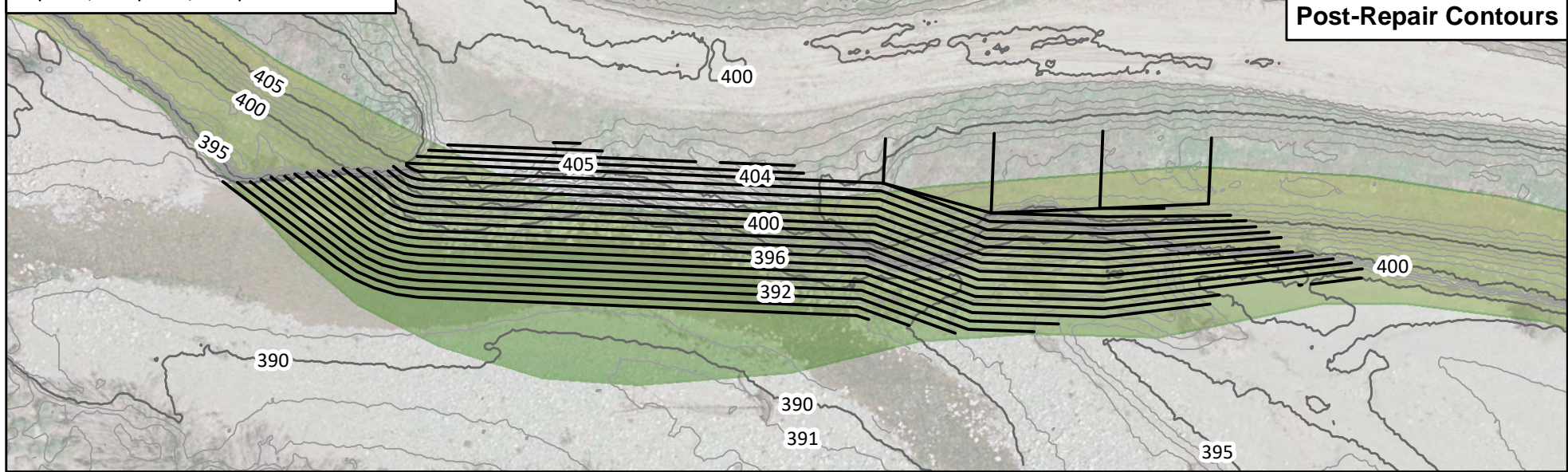
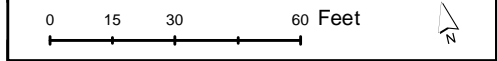
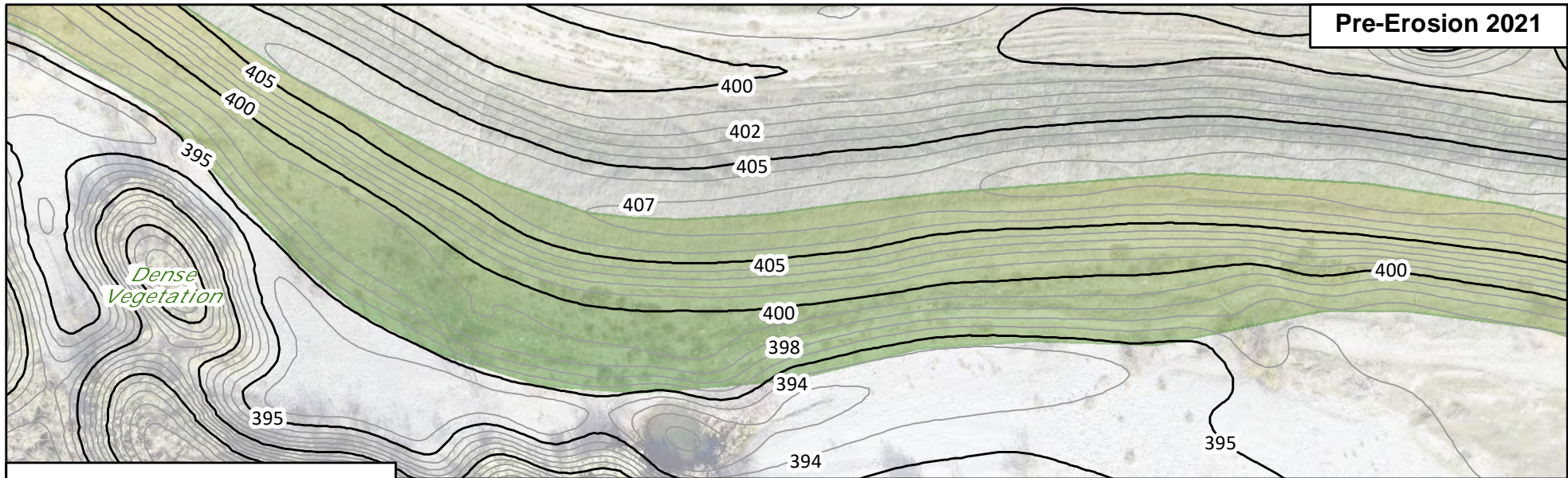
B2 Reach - Arroyo Del Valle Topography
Lake B Long-Term Bank Stabilization Project
Cemex Construction Materials Pacific, LLC
Alameda County, California

Figure 3

10/4/2024

Disclaimer: The data was mapped for planning purposes only. No liability is assumed for accuracy of the data shown.





Aerial and topographic survey generated using Kespry Inc. systems, dated 11-5-2021 (top) and by Vertical Mapping Aerial, April 2024 (bottom).

Legend:

- Approx. Footprint of Pre-Erosion Bank
- Existing Contour 1'
- Existing Contour 5'
- Proposed Grading Contours

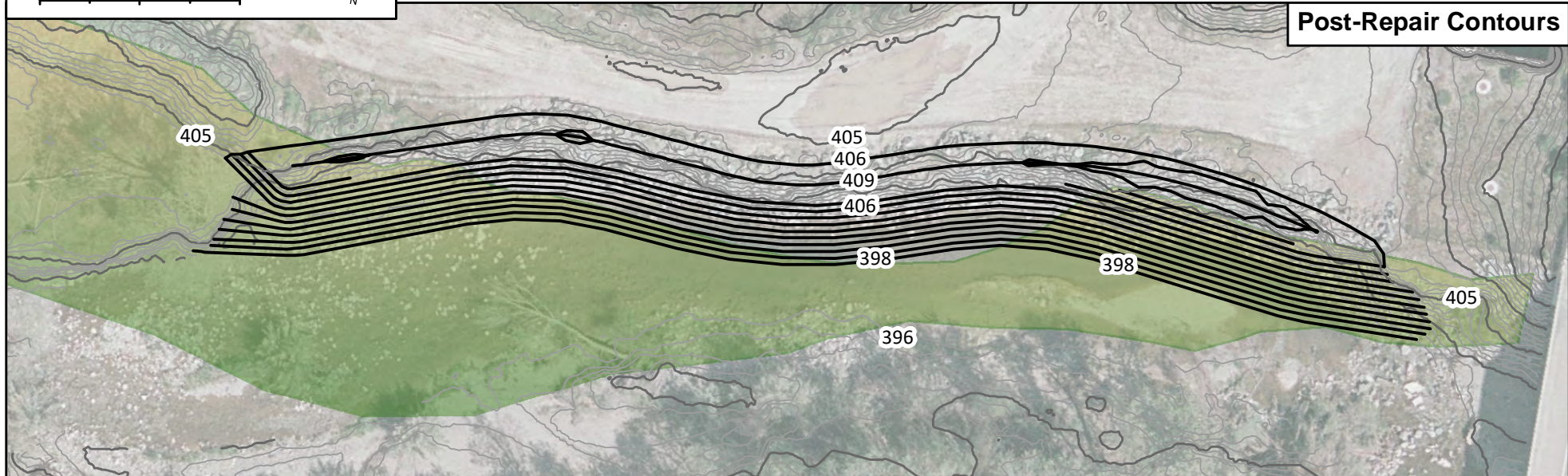
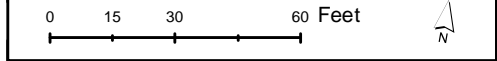
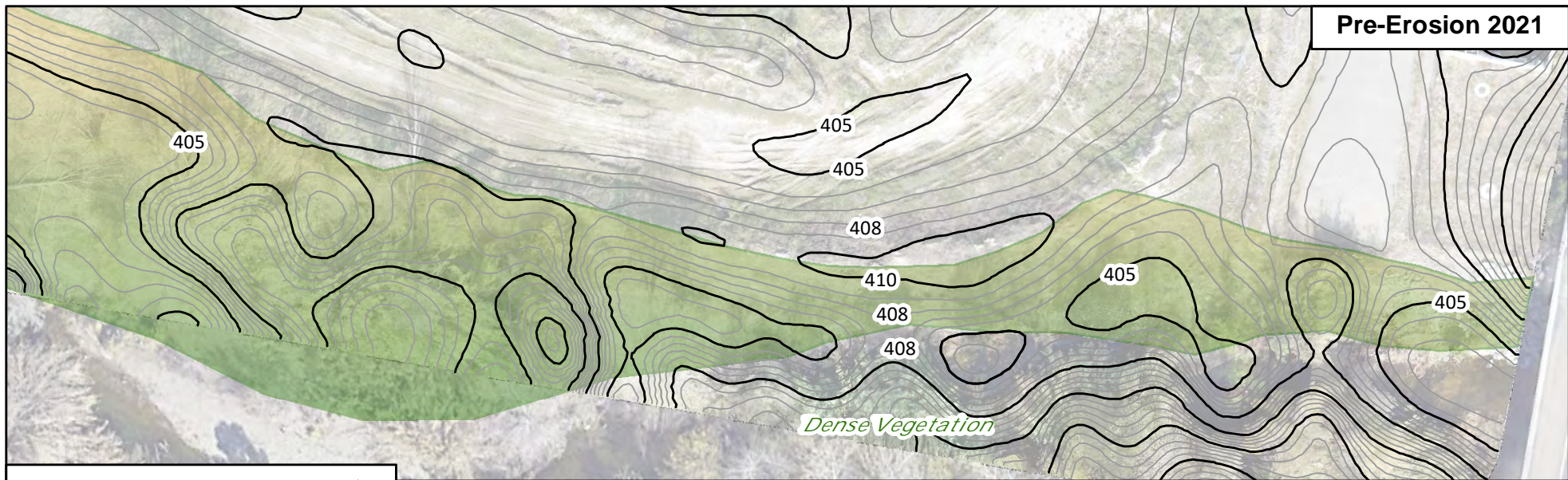
B3 Reach - Arroyo Del Valle Topography
Lake B Long-Term Bank Stabilization Project
Cemex Construction Materials Pacific, LLC
Alameda County, California

Figure 4

10/4/2024

Disclaimer: The data was mapped for planning purposes only. No liability is assumed for accuracy of the data shown.





Aerial and topographic survey generated using Kespry Inc. systems, dated 11-5-2021 (top) and by Vertical Mapping Aerial, April 2024 (bottom).

Legend:

- Approx. Footprint of Pre-Erosion Bank
- Existing Contour 1'
- Existing Contour 5'
- Proposed Grading Contours

B4 Reach - Arroyo Del Valle Topography
Lake B Long-Term Bank Stabilization Project
Cemex Construction Materials Pacific, LLC
Alameda County, California

Figure 5

10/4/2024

Disclaimer: The data was mapped for planning purposes only. No liability is assumed for accuracy of the data shown.

