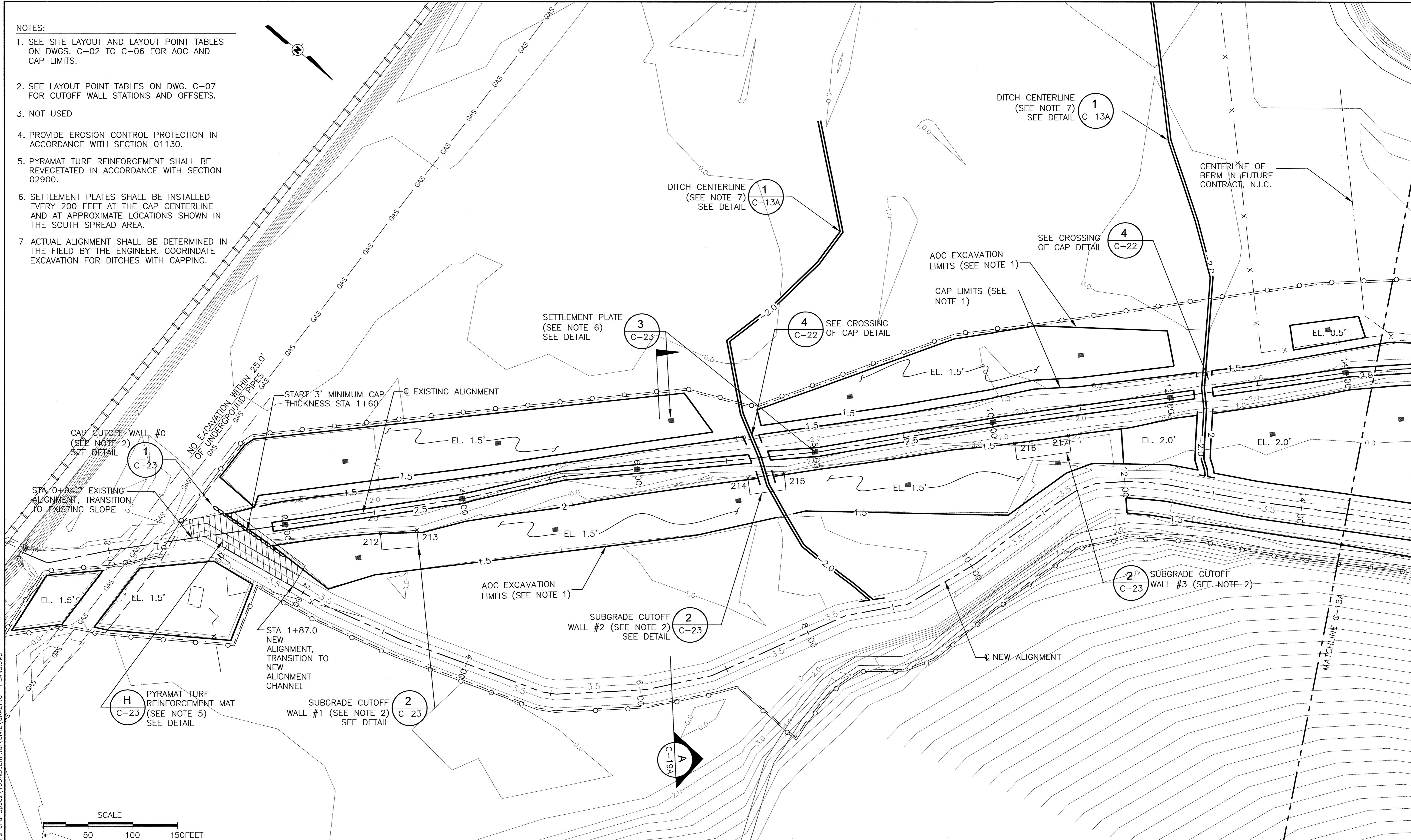
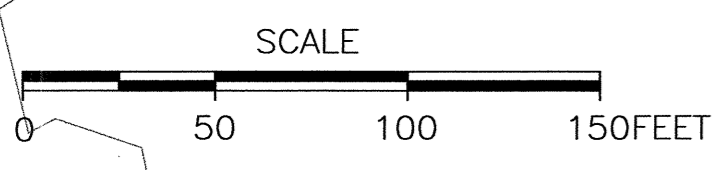


NOTES:

1. SEE SITE LAYOUT AND LAYOUT POINT TABLES ON DWGS. C-02 TO C-06 FOR AOC AND CAP LIMITS.
2. SEE LAYOUT POINT TABLES ON DWG. C-07 FOR CUTOFF WALL STATIONS AND OFFSETS.
3. NOT USED
4. PROVIDE EROSION CONTROL PROTECTION IN ACCORDANCE WITH SECTION 01130.
5. PYRAMAT TURF REINFORCEMENT SHALL BE REVEGETATED IN ACCORDANCE WITH SECTION 02900.
6. SETTLEMENT PLATES SHALL BE INSTALLED EVERY 200 FEET AT THE CAP CENTERLINE AND AT APPROXIMATE LOCATIONS SHOWN IN THE SOUTH SPREAD AREA.
7. ACTUAL ALIGNMENT SHALL BE DETERMINED IN THE FIELD BY THE ENGINEER. COORDINATE EXCAVATION FOR DITCHES WITH CAPPING.



m04eddy9 Dec 04, 2003 - 11:57am  
 J:\CADSHARED\Rhodia\Plans and Specs\100%Submittal\CIVIL\GRADING\_PLANS.dwg



REV	DESCRIPTION OF REVISION	REVIEWED BY	REVISED BY	DATE
1	100% CONTRACT DOCUMENTS	JR	ML	11/21/2003

**Rhodia**  
 100 Mococo Road  
 Martinez, California 94553

**URS**  
 500 12th Street, Suite 200  
 Oakland, California 94607

REGISTERED PROFESSIONAL  
 CIVIL ENGINEER  
 STATE OF CALIFORNIA  
 No. C65035  
 Exp. 6/30/07

WARNING  
 IF THIS BAR DOES NOT MEASURE 1" THEN DRAWING IS NOT TO SCALE

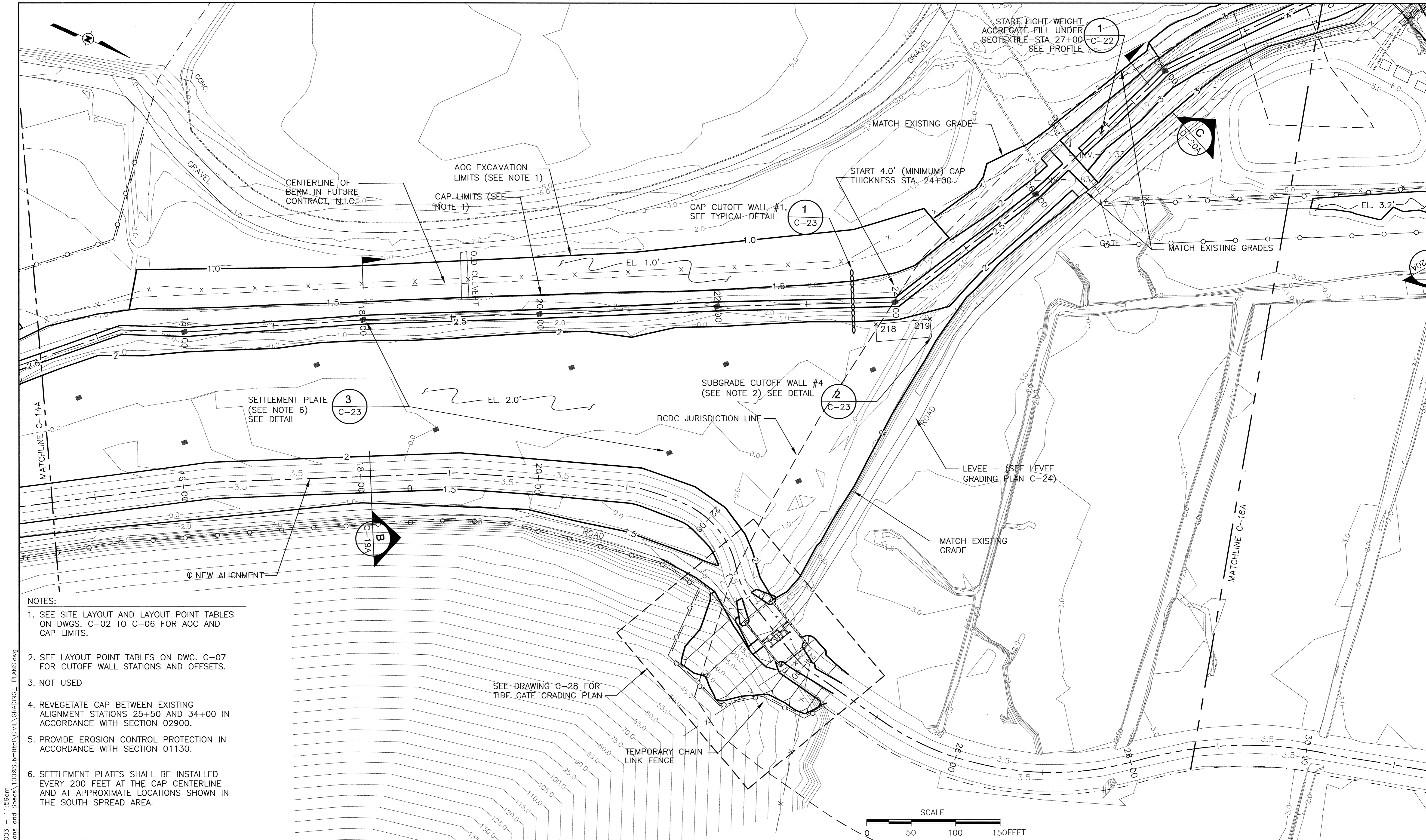
DESIGNED	DK
DRAWN	JAC
CHECKED	JR
PEER REVIEWED	MF
PROJECT MANAGER	CV
DATE	

PEYTON SLOUGH REMEDIATION PROJECT  
 RHODIA INC., MARTINEZ, CA.

**GRADING AND CAP PLAN**  
 SHEET 1 OF 5

REVISION	△
CONTRACT #	3776-102802
DRAWING	<b>C-14A</b>
SHEET	26 OF 63





- NOTES:
1. SEE SITE LAYOUT AND LAYOUT POINT TABLES ON DWGS. C-02 TO C-06 FOR AOC AND CAP LIMITS.
  2. SEE LAYOUT POINT TABLES ON DWG. C-07 FOR CUTOFF WALL STATIONS AND OFFSETS.
  3. NOT USED
  4. REVEGETATE CAP BETWEEN EXISTING ALIGNMENT STATIONS 25+50 AND 34+00 IN ACCORDANCE WITH SECTION 02900.
  5. PROVIDE EROSION CONTROL PROTECTION IN ACCORDANCE WITH SECTION 01130.
  6. SETTLEMENT PLATES SHALL BE INSTALLED EVERY 200 FEET AT THE CAP CENTERLINE AND AT APPROXIMATE LOCATIONS SHOWN IN THE SOUTH SPREAD AREA.

REV	DESCRIPTION OF REVISION	REVIEWED BY	REVISED BY	DATE

**Rhodia**  
 100 Mococo Road  
 Martinez, California 94553

REGISTERED PROFESSIONAL ENGINEER  
**ROBERT G. ...**  
 No. 6600356  
 Exp. 12/31/06  
 CIVIL  
 STATE OF CALIFORNIA

**URS**  
 500 12th Street, Suite 200  
 Oakland, California 94607

REGISTERED PROFESSIONAL ENGINEER  
**John W. ...**  
 No. C65035  
 Exp. 6/30/07  
 CIVIL  
 STATE OF CALIFORNIA

WARNING  
 IF THIS BAR DOES NOT MEASURE 1" THEN DRAWING IS NOT TO SCALE

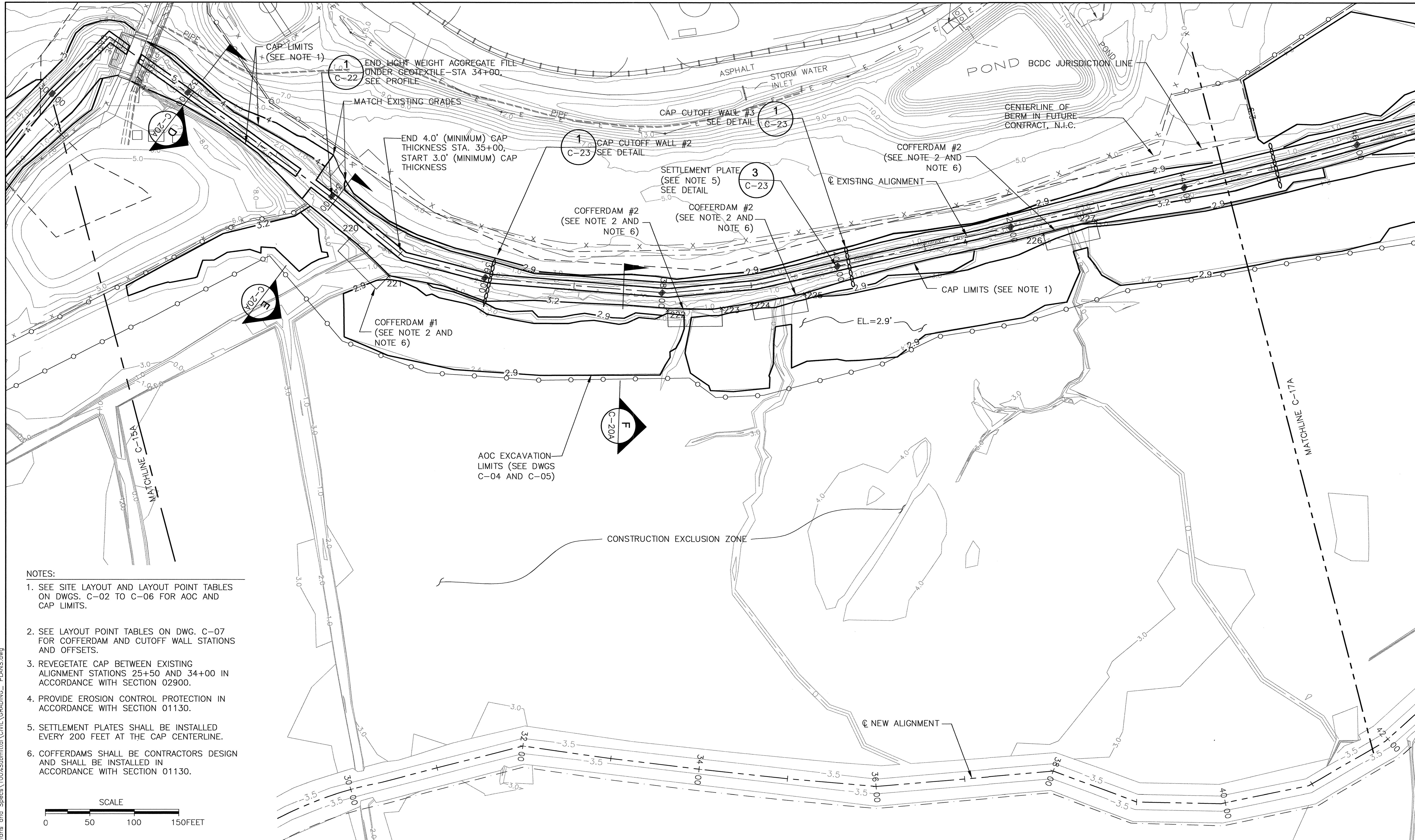
DESIGNED	DK
DRAWN	JAC
CHECKED	JR
PEER REVIEWED	MF
PROJECT MANAGER	CV
DATE	

PEYTON SLOUGH REMEDIATION PROJECT  
 RHODIA INC., MARTINEZ, CA.  
**GRADING AND CAP PLAN**  
 SHEET 2 OF 5

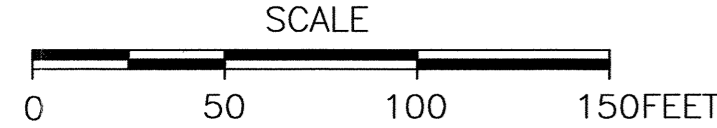
REVISION	
CONTRACT #	3776-102802
DRAWING	<b>C-15A</b>
SHEET	27 OF 63

mateddy9 Dec 04, 2003 11:59am  
 J:\CAD\SHARED\Rhodia\Plans and Specs\100%Submittal\CIVIL\GRADING\_PLANS.dwg





- NOTES:
1. SEE SITE LAYOUT AND LAYOUT POINT TABLES ON DWGS. C-02 TO C-06 FOR AOC AND CAP LIMITS.
  2. SEE LAYOUT POINT TABLES ON DWG. C-07 FOR COFFERDAM AND CUTOFF WALL STATIONS AND OFFSETS.
  3. REVEGETATE CAP BETWEEN EXISTING ALIGNMENT STATIONS 25+50 AND 34+00 IN ACCORDANCE WITH SECTION 02900.
  4. PROVIDE EROSION CONTROL PROTECTION IN ACCORDANCE WITH SECTION 01130.
  5. SETTLEMENT PLATES SHALL BE INSTALLED EVERY 200 FEET AT THE CAP CENTERLINE.
  6. COFFERDAMS SHALL BE CONTRACTORS DESIGN AND SHALL BE INSTALLED IN ACCORDANCE WITH SECTION 01130.



mledy9 Dec 04, 2003 - 12:00pm  
 J:\CAD\SHARED\Rhodia\Plans and Specs\100%Submittal\CIVIL\GRADING\_PLANS.dwg

REV	DESCRIPTION OF REVISION	REVIEWED BY	REVISED BY	DATE
1	100% CONTRACT DOCUMENTS	JR	ML	11/21/2003

**Rhodia**  
 100 Mococo Road  
 Martinez, California 94553

REGISTERED PROFESSIONAL ENGINEER  
 ROBERT R. ...  
 No. 6200356  
 Exp. 12/31/04  
 CIVIL ENGINEER  
 STATE OF CALIFORNIA

**URS**  
 500 12th Street, Suite 200  
 Oakland, California 94607

REGISTERED PROFESSIONAL ENGINEER  
 ...  
 No. C65035  
 Exp. 6/30/07  
 CIVIL ENGINEER  
 STATE OF CALIFORNIA

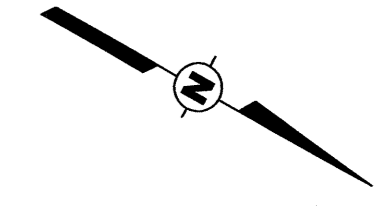
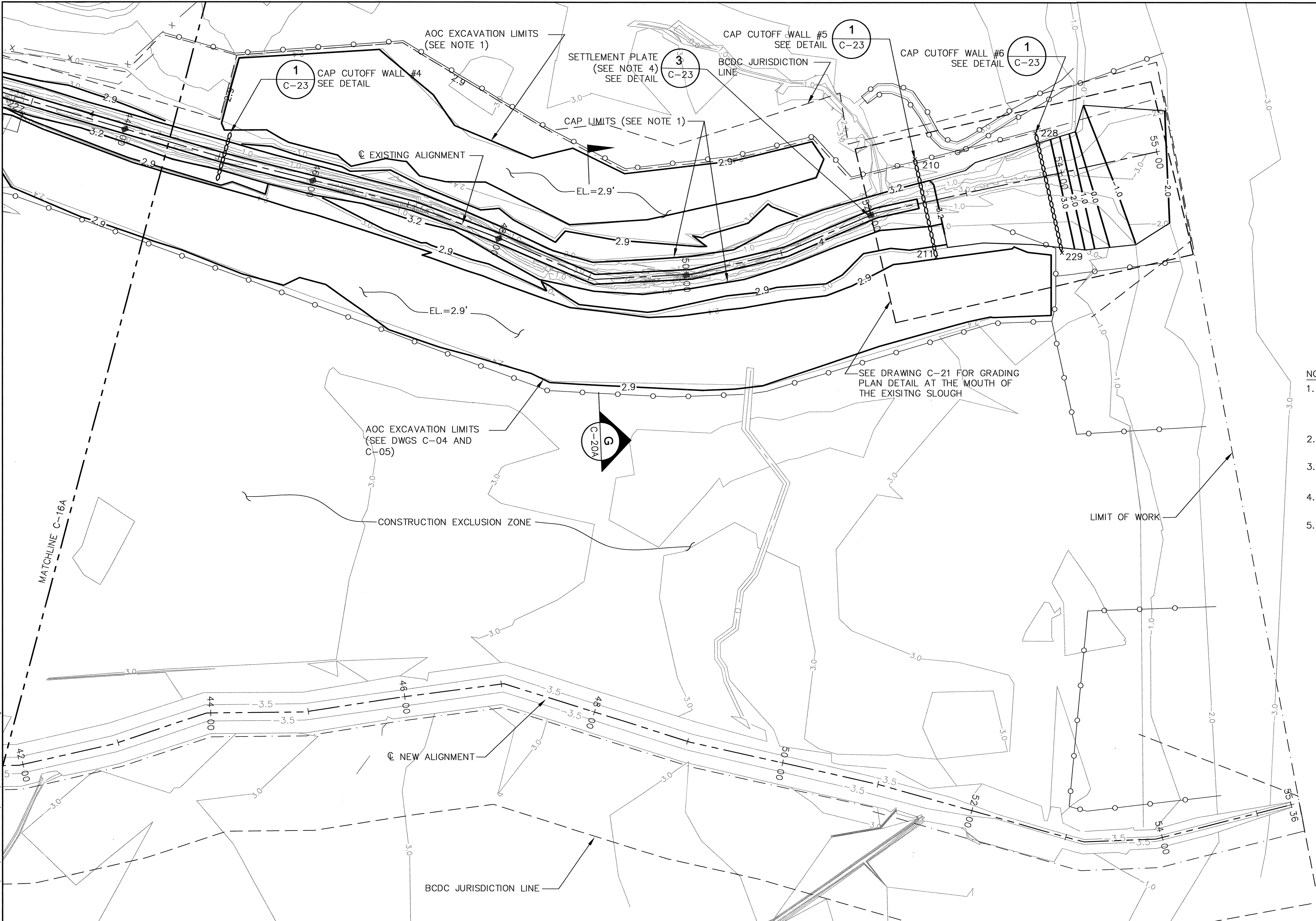
WARNING  
 0 1/2 1  
 IF THIS BAR DOES NOT MEASURE 1" THEN DRAWING IS NOT TO SCALE.

DESIGNED	DK
DRAWN	JAC
CHECKED	JR
PEER REVIEWED	MF
PROJECT MANAGER	CV
DATE	

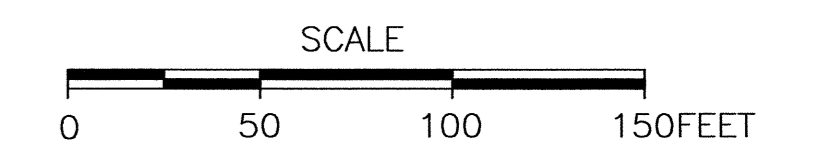
PEYTON SLOUGH REMEDIATION PROJECT  
 RHODIA INC., MARTINEZ, CA.  
**GRADING AND CAP PLAN**  
 SHEET 3 OF 5

REVISION	0
CONTRACT #	3776-102802
DRAWING	<b>C-16A</b>
SHEET	28 OF 63





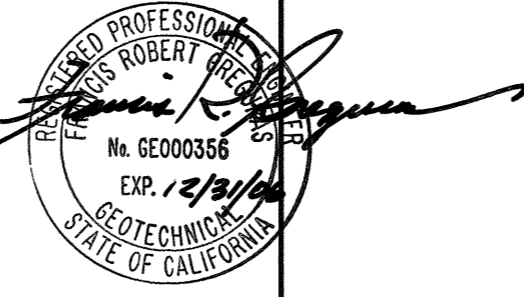
- NOTES:**
- SEE SITE LAYOUT AND LAYOUT POINT TABLES ON DWGS. C-02 TO C-06 FOR AOC AND CAP LIMITS.
  - SEE LAYOUT POINT TABLES ON DWG. C-07 FOR CUTOFF WALL STATIONS AND OFFSETS.
  - PROVIDE EROSION CONTROL PROTECTION IN ACCORDANCE WITH SECTION 01130.
  - SETTLEMENT PLATES SHALL BE INSTALLED EVERY 200 FEET AT THE CAP CENTERLINE.
  - MOUTH OF EXISTING SLOUGH SHALL BE CLOSED FOR CAPPING AND SHALL BE ENCLOSED WITH A SILT CURTAIN ON BOTH SIDES OF THE CHANNEL AND WITHIN THE CHANNEL TO PREVENT REINTRODUCTION OF FISH DURING HIGH TIDES. THE ELEVATION OF THE TOP ELEVATION OF THE SILT CURTAINS SHALL BE A MINIMUM OF 3.2 FEET.



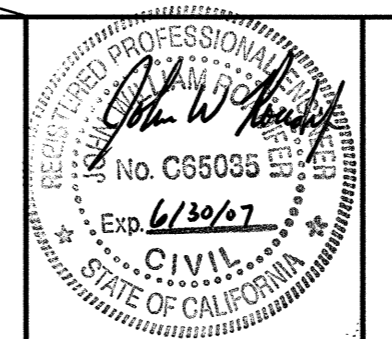
Dec 04, 2003 - 12:01pm  
 J:\CAD\SHARE\rhodio\Plans and Specs\100%submit\civil\GRADING\_PLANS.dwg

REV	DESCRIPTION OF REVISION	REVIEWED BY	REVISED BY	DATE

**Rhodio**  
 100 Mococo Road  
 Martinez, California 94553



**URS**  
 500 12th Street, Suite 200  
 Oakland, California 94607



**WARNING**  
 0 1/2 1  
 IF THIS BAR DOES NOT MEASURE 1" THEN DRAWING IS NOT TO SCALE

DESIGNED	DK
DRAWN	JAC
CHECKED	JR
PEER REVIEWED	MF
PROJECT MANAGER	CV
DATE	

PEYTON SLOUGH REMEDIATION PROJECT  
 RHODIA INC., MARTINEZ, CA.

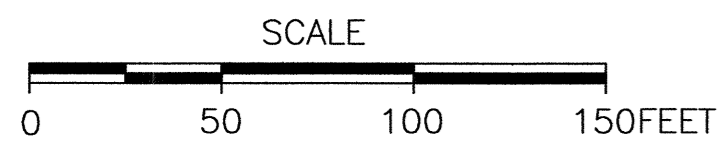
**GRADING AND CAP PLAN**  
**SHEET 4 OF 5**

REVISION	
CONTRACT #	3776-102802
DRAWING	<b>C-17A</b>
SHEET	29 OF 63



**NOTES:**

1. SEE SITE LAYOUT AND LAYOUT POINT TABLES ON DWGS. C-02 TO C-06 FOR AOC AND CAP LIMITS.
2. SEE LAYOUT POINT TABLES ON DWG. C-07 FOR CUTOFF WALL STATIONS AND OFFSETS.
3. NOT USED
4. REVEGETATE CAP BETWEEN EXISTING ALIGNMENT STATIONS 25+50 AND 34+00 IN ACCORDANCE WITH SECTION 02900.
5. PROVIDE EROSION CONTROL PROTECTION IN ACCORDANCE WITH SECTION 01130.
6. SETTLEMENT PLATES SHALL BE INSTALLED EVERY 200 FEET AT THE CAP CENTERLINE.



Feb 17, 2004 - 12:18pm  
 C:\temp-offnetwork\GRADING\_PLANS.dwg  
 maledy9

REV	DESCRIPTION OF REVISION	REVIEWED BY	REVISED BY	DATE

100 Mococo Road  
 Martinez, California 94553

500 12th Street, Suite 200  
 Oakland, California 94607

REGISTERED PROFESSIONAL ENGINEER  
 No. C65038  
 CIVIL  
 STATE OF CALIFORNIA

**WARNING**  
 IF THIS BAR DOES NOT MEASURE 1" THEN DRAWING IS NOT TO SCALE

DESIGNED	DK
DRAWN	JAC
CHECKED	JR
PEER REVIEWED	MF
PROJECT MANAGER	CV
DATE	

PEYTON SLOUGH REMEDIATION PROJECT  
 RHODIA INC., MARTINEZ, CA.  
**GRADING AND CAP PLAN**  
**SHEET 5 OF 5**

REVISION  
 CONTRACT # 3776-102802  
 DRAWING  
**C-18A**  
 SHEET 30 OF 63