



Latitude: 42.938
 Longitude: -115.964
 T06S R04E S03 NE1/4



LEGEND

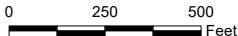
-  Black Sands Project Area
-  Parcel Boundary
-  Roads

**Black Sands Resort Bank Stabilization Project
 Project Vicinity Map**

**Snake River Mile 494
 Owyhee County**



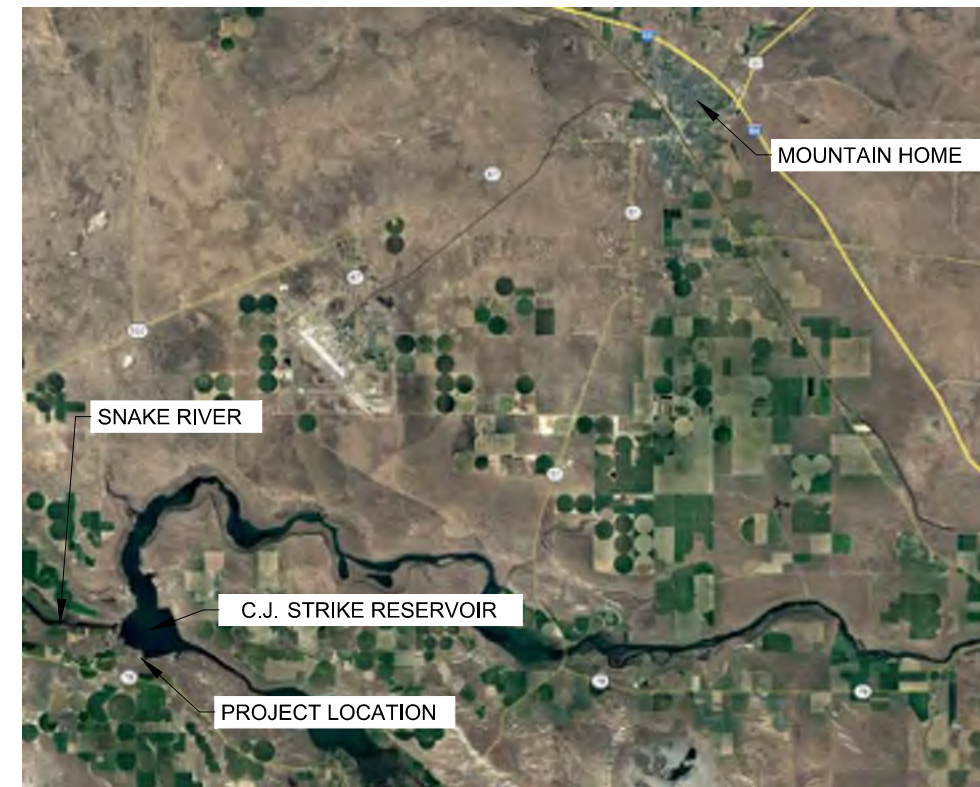
1 inch = 500 feet



Date: 3/26/2024

BLACK SANDS RESORT BANK STABILIZATION PROJECT

PROJECT SITE: SEC. 3, T. 6S, R. 4E, B.M.



VICINITY MAP
NTS

DRAWING INDEX

- 1.0 COVER SHEET
- 2.0 OVERVIEW
- 3.0 NOTES SHEET
- 4.0 EROSION AND SEDIMENT (E&S) CONTROL SHEET
- 5.0 SOUTH SHORELINE (SS) PLAN AND PROFILE
- 6.0 SOUTH SHORELINE (SS) DETAILS
- 7.0 WEST SHORELINE (WS) RIPRAP (RR) PLAN & PROFILE
- 8.0 WEST SHORELINE (WS) RETAINING WALL (RW) PLAN & PROFILE
- 9.0 WEST SHORELINE DETAILS

DIRECTIONS TO PROJECT SITE

FROM BOISE, IDAHO, TAKE I-84 E/US-20E TOWARD MOUNTAIN HOME FOR 19.6 MILES. TAKE EXIT 74 FOR SIMCO ROAD AND TURN RIGHT ONTO SIMCO ROAD FOR 20 MILES. TURN RIGHT ONTO ID-167 FOR 0.6 MILES. TURN LEFT ONTO STRIKE DAM CUT-OFF ROAD/S WESTSTRIKE DAM ROAD AND CONTINUE FOR 8 MILES. TURN LEFT ONTO BLACK SANDS ROAD. AFTER 1.1 MILES TURN LEFT AND YOU WILL HAVE ARRIVED.

SPATIAL REFERENCE

HORIZONTAL PROJECTION: IPC COORDINATE SYSTEM
HORIZONTAL DATUM: NAD83
VERTICAL DATUM: NAVD88 (GEOID03)

PROJECT CONTROL POINT INFORMATION

CP ##	PT #	NORTHING	EASTING	ELEV. (FT)	DESCRIPTION
CP #1	493.79	673002.10	1512203.78	2383.24	X STEEL BALL IN CONCRETE
CP #2	493.65	673470.55	1511601.57	2382.57	BRC

DISCLAIMER:
THIS DRAWING IS NOT A FORMAL SURVEY AND ONLY PROVIDES GEOGRAPHIC REPRESENTATION OF IDAHO POWER RIGHT OF WAY GRANT IN RELATION TO IDAHO POWER LINES, FACILITIES, AND EXISTING PROPERTY BOUNDARIES.

NO.	DESCRIPTION	DATE	DS.	DR.	NOTES
1	30% PROJECT CONSTRUCTION PLANS	6/15/23	GO	ES	1. HORIZONTAL PROJECTION: IPTM 2. ALL ELEVATIONS ARE BASED ON THE NAVD88 DATUM
2	60% PROJECT CONSTRUCTION PLANS	12/1/23	GO	ES	
3	90% PROJECT CONSTRUCTION PLANS	3/26/24	GO	ES	

SIGNAGE	DATE
DS:GO,ES	3-26-24
DR:GO,ES	3-26-24
CH: JC	3-26-24
SCALE: N/A	H
	N/A V

PROJECT INFORMATION
BLACK SANDS RESORT BANK STABILIZATION PROJECT CONSTRUCTION PLAN SET OWYHEE COUNTY, IDAHO

RIVER ENGINEERING
IDAHO POWER COMPANY WO NO: 27625213-01 COVER SHEET SHEET: 1 / 9



By: EKS/748 Date: 3/25/2024 1:31 PM Path: S:\Bankline_Erosion\Projects\2022_CJ_BlackSands\05_Design\CAD\BlackSands_Design_90%_20240320