





- Notes:
1. All samples collected during base flow conditions.
  2. **Red bold values indicate the value was above the Human Health PSL.**
  3. Human Health project screening levels are calculated site-specific values using EPA RSL Calculator (May 2023).
  4. *Red italicized values indicate the value was above the Ecological Aquatic Organism PSL.*
  5. Red underlined values indicate the value was above the Ecological Wildlife PSL.
  6. Ecological PSLs are from Grippo et al. (2021) and Divine et. al. (2020).
  7. D or DUP - Duplicate sample
  8. U - Non-detect
  9. Results reported in nanograms per liter (ng/L).
  10. PFBS - Perfluorobutanesulfonic Acid
  11. PFOA - Pentadecafluorooctanoic Acid
  12. PFOS - Perfluorooctanesulfonic Acid
  13. PFHXS - Perfluorohexanesulfonic Acid
  14. PFNA - Perfluorononanoic Acid
  15. HFPO-DA - Hexafluoropropylene Oxide Dimer Acid
  16. PFHxA - Perfluorohexanoic Acid
  17. NC - No criteria established

Surface Water										
	PFOA**	PFOS	PFBS**	PFHxS**	PFNA**	HFPO-DA**	PFDA**	PFDOA**	PFHPA**	PFHxA**
Human Health PSLs (ng/L) <sup>2,3</sup>	210	140	21000	1200	170	210	NC	NC	NC	31000
Ecological (Aquatic Organism) PSLs (ng/L) <sup>4,5,6</sup>	307000	22600	400000	NC	16400	NC	2940	72000	870000	28800
Ecological (Aquatic Wildlife) PSLs (ng/L) <sup>4,5,6</sup>	1580000	2080	5710000	5500	2200	NC	660	NC	NC	2210000

\*\* Results not shown as human health screening level was never exceeded.


PFAS SURFACE WATER SAMPLING ANALYTICAL RESULTS  
PFOS HUMAN HEALTH EXCEEDANCES ONLY  
(MARCH 2023)  
EXTENT B  
FORMER NASJRB WILLOW GROVE  
HORSHAM TOWNSHIP, PENNSYLVANIA

**Legend**

- Surface Water Sample Location
- Historical Surface Water Sample Location
- Interpreted Groundwater Flow Direction
- Stream
- ▭ Biddle Air National Guard Base
- ▭ Former NASJRB Willow Grove

500 250 0 500

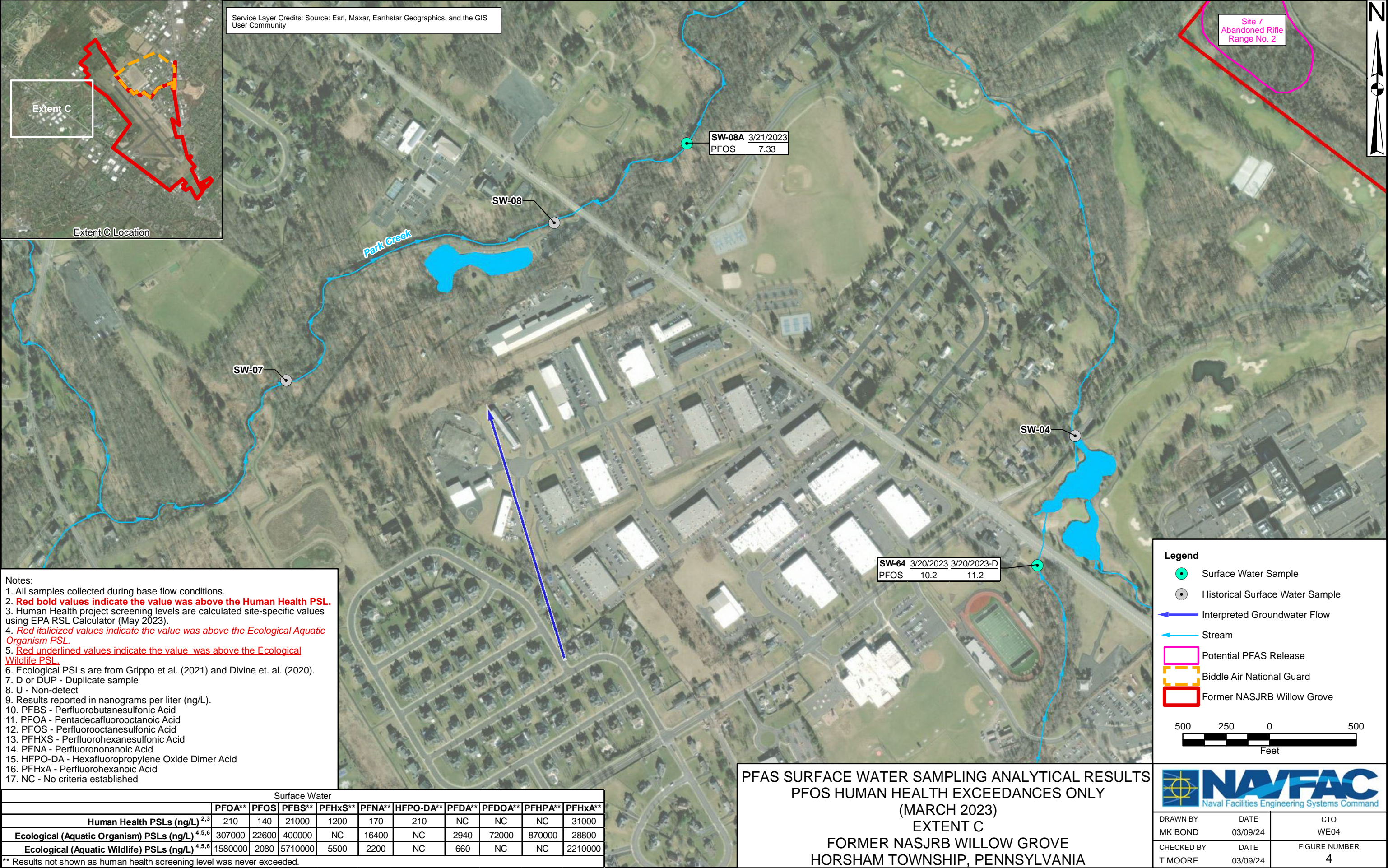
Feet



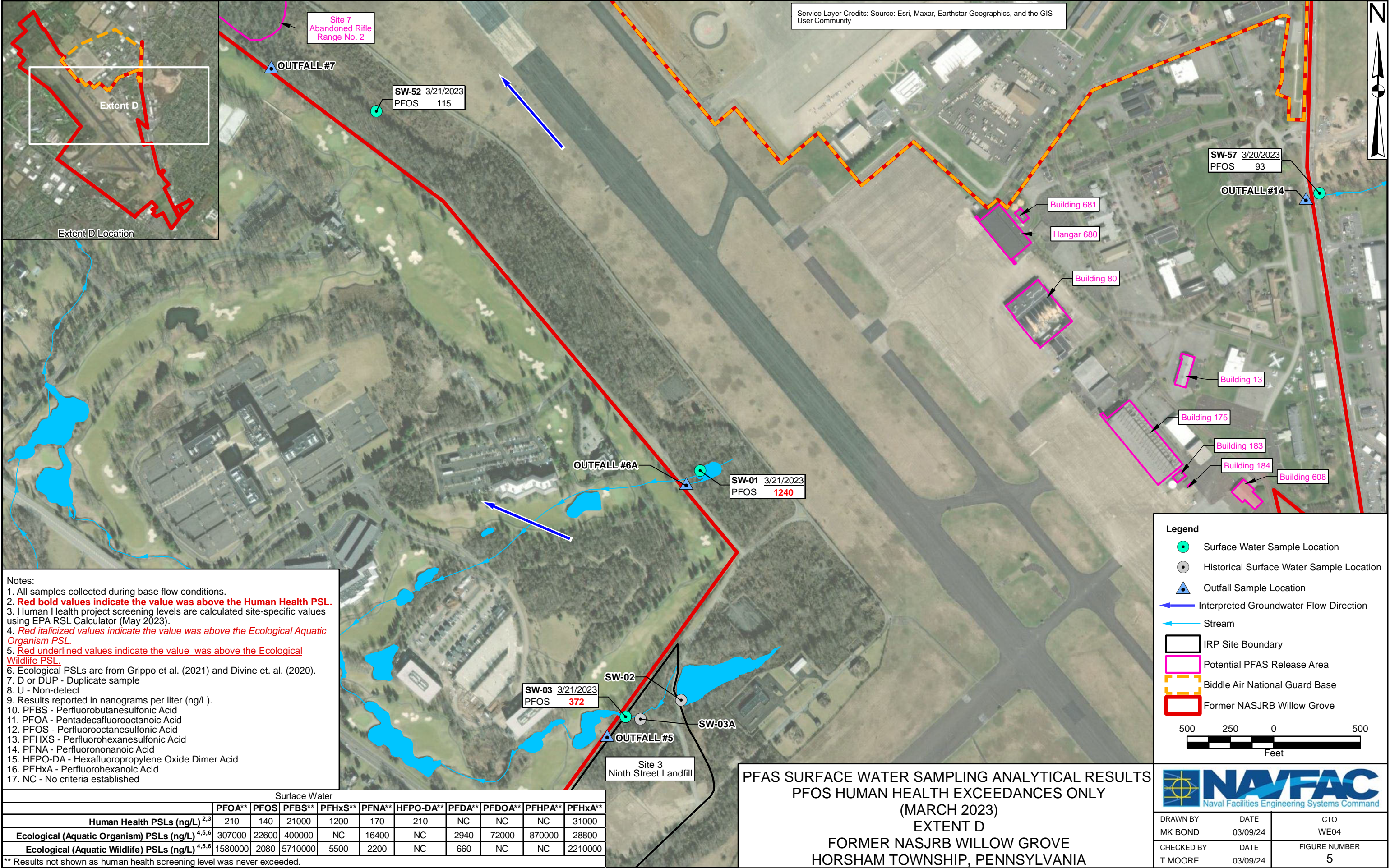
Naval Facilities Engineering Systems Command

DRAWN BY	DATE	CTO
MK BOND	11/01/23	WE04
CHECKED BY	DATE	FIGURE NUMBER
T MOORE	11/01/23	3

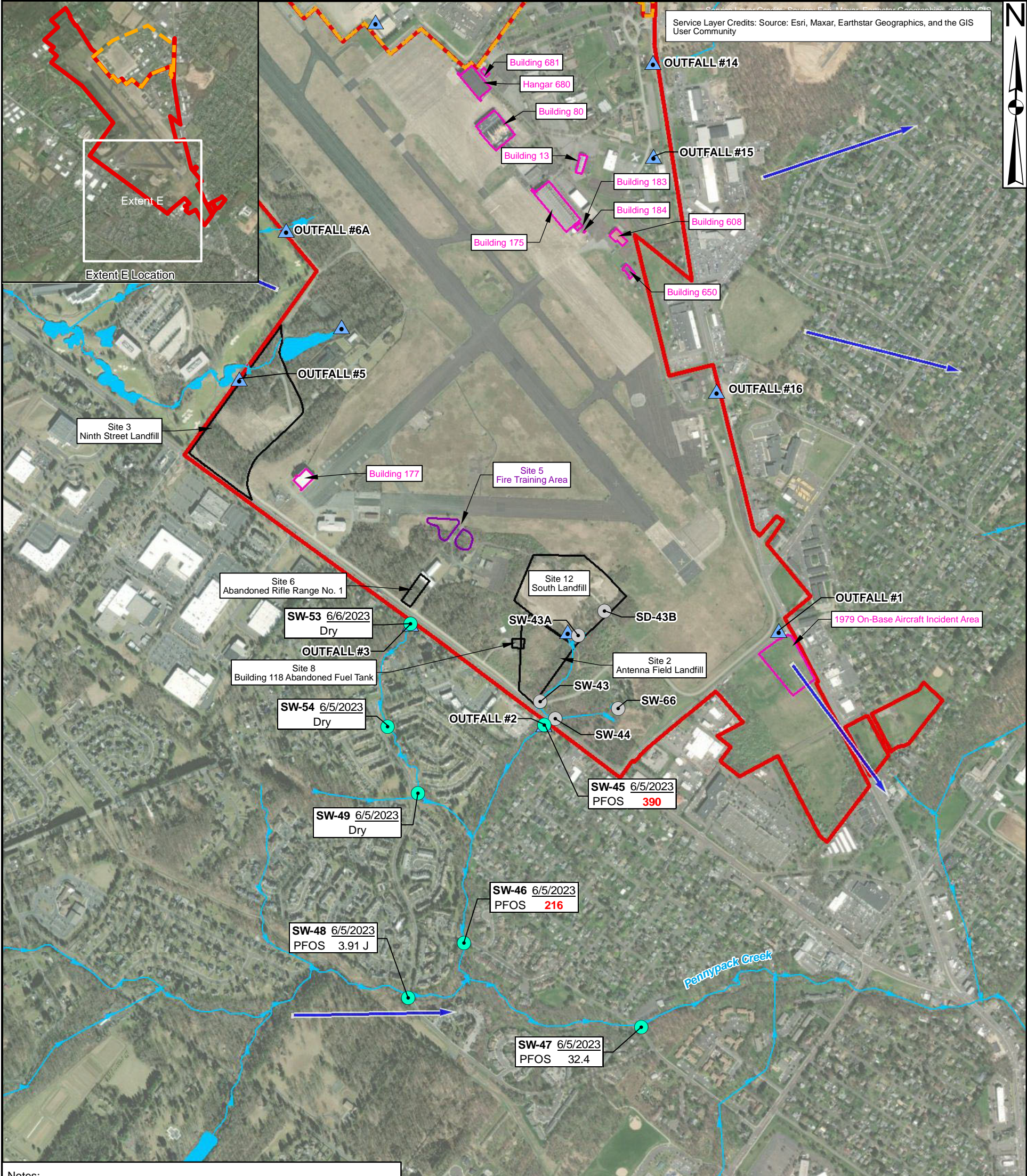












Notes:

1. All samples collected during base flow conditions.
2. **Red bold values indicate the value was above the Human Health PSL.**
3. Human Health project screening levels are calculated site-specific values using EPA RSL Calculator (May 2023).
4. **Red italicized values indicate the value was above the Ecological Aquatic Organism PSL.**
5. **Red underlined values indicate the value was above the Ecological Wildlife PSL.**
6. Ecological PSLs are from Grippo et al. (2021) and Divine et. al. (2020).
7. D or DUP - Duplicate sample
8. U - Non-detect
9. Results reported in nanograms per liter (ng/L).
10. PFBS - Perfluorobutanesulfonic Acid
11. PFOA - Pentadecafluorooctanoic Acid
12. PFOS - Perfluorooctanesulfonic Acid
13. PFHXS - Perfluorohexanesulfonic Acid
14. PFNA - Perfluorononanoic Acid
15. HFPO-DA - Hexafluoropropylene Oxide Dimer Acid
16. PFHxA - Perfluorohexanoic Acid
17. NC - No criteria established

Surface Water										
	PFOA**	PFOS	PFBS**	PFHxS**	PFNA**	HFPO-DA**	PFDA**	PFDOA**	PFHPA**	PFHxA**
Human Health PSLs (ng/L) <sup>2,3</sup>	210	140	21000	1200	170	210	NC	NC	NC	31000
Ecological (Aquatic Organism) PSLs (ng/L) <sup>4,5,6</sup>	307000	22600	400000	NC	16400	NC	2940	72000	870000	28800
Ecological (Aquatic Wildlife) PSLs (ng/L) <sup>4,5,6</sup>	1580000	2080	5710000	5500	2200	NC	660	NC	NC	2210000

\*\* Results not shown as human health screening level was never exceeded.


**Legend**

- Surface Water Sample Location
- Historical Surface Water Sample Location
- ▲ Outfall Sample Location
- Interpreted Groundwater Flow Direction
- Stream
- IRP Site Boundary
- Potential PFAS Release Area
- Confirmed PFAS Release Area
- Biddle Air National Guard Base
- Former NASJRB Willow Grove

1,000 500 0 1,000

Feet

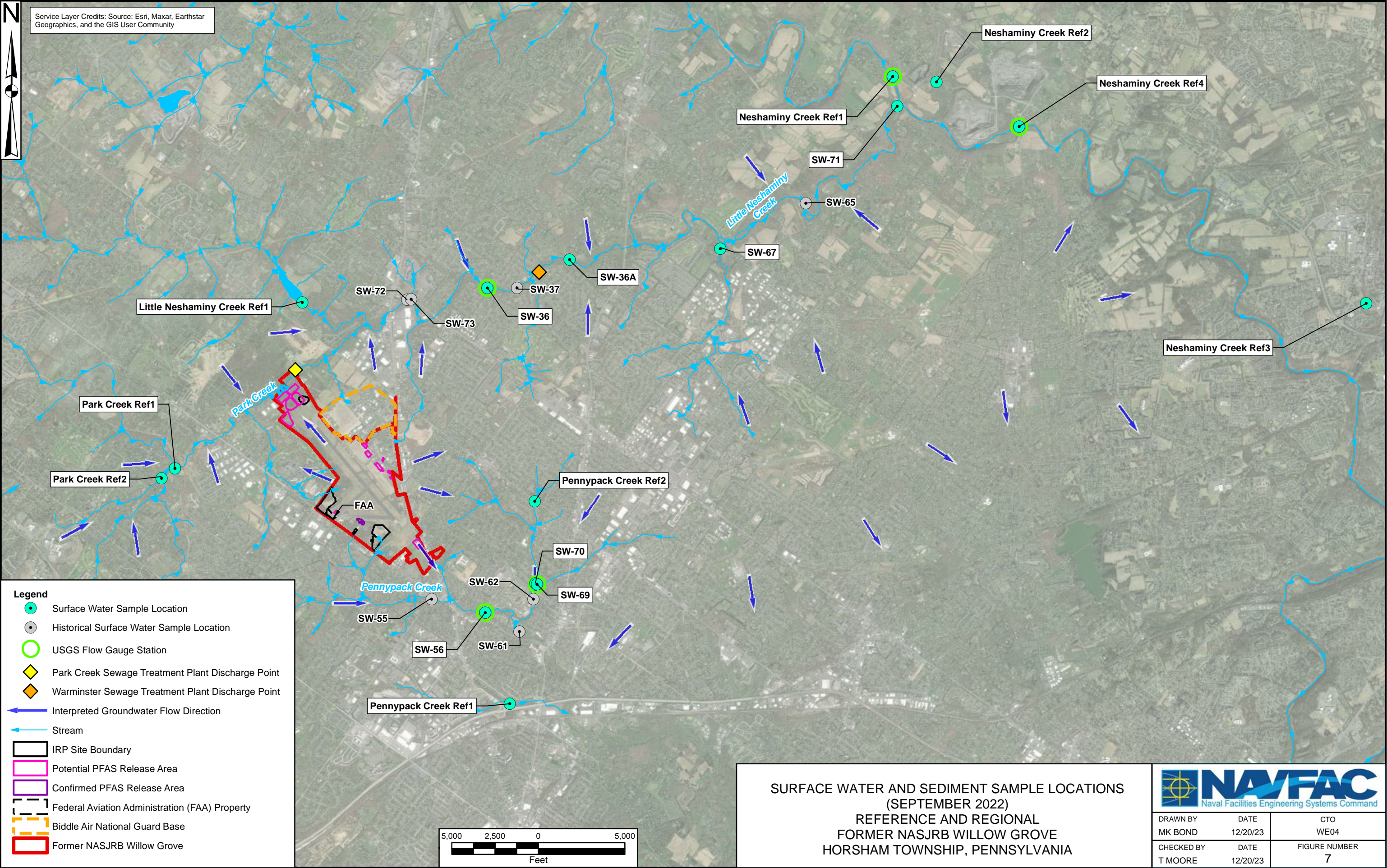
PFAS SURFACE WATER SAMPLING ANALYTICAL RESULTS  
PFOS HUMAN HEALTH EXCEEDANCES ONLY  
(JUNE 2023)  
EXTENT E  
FORMER NASJRB WILLOW GROVE  
HORSHAM TOWNSHIP, PENNSYLVANIA



Naval Facilities Engineering Systems Command

DRAWN BY MK BOND	DATE 03/09/24	CTO WE04
CHECKED BY T MOORE	DATE 03/09/24	FIGURE NUMBER 6





SURFACE WATER AND SEDIMENT SAMPLE LOCATIONS  
(SEPTEMBER 2022)  
REFERENCE AND REGIONAL  
FORMER NASJRB WILLOW GROVE  
HORSHAM TOWNSHIP, PENNSYLVANIA



DRAWN BY MK BOND	DATE 12/20/23	CTO WE04
CHECKED BY T MOORE	DATE 12/20/23	FIGURE NUMBER 7



