

**PURPOSE:** OPERATIONS & MAINTENANCE

**DATUM:** NORTH AMERICAN 1983

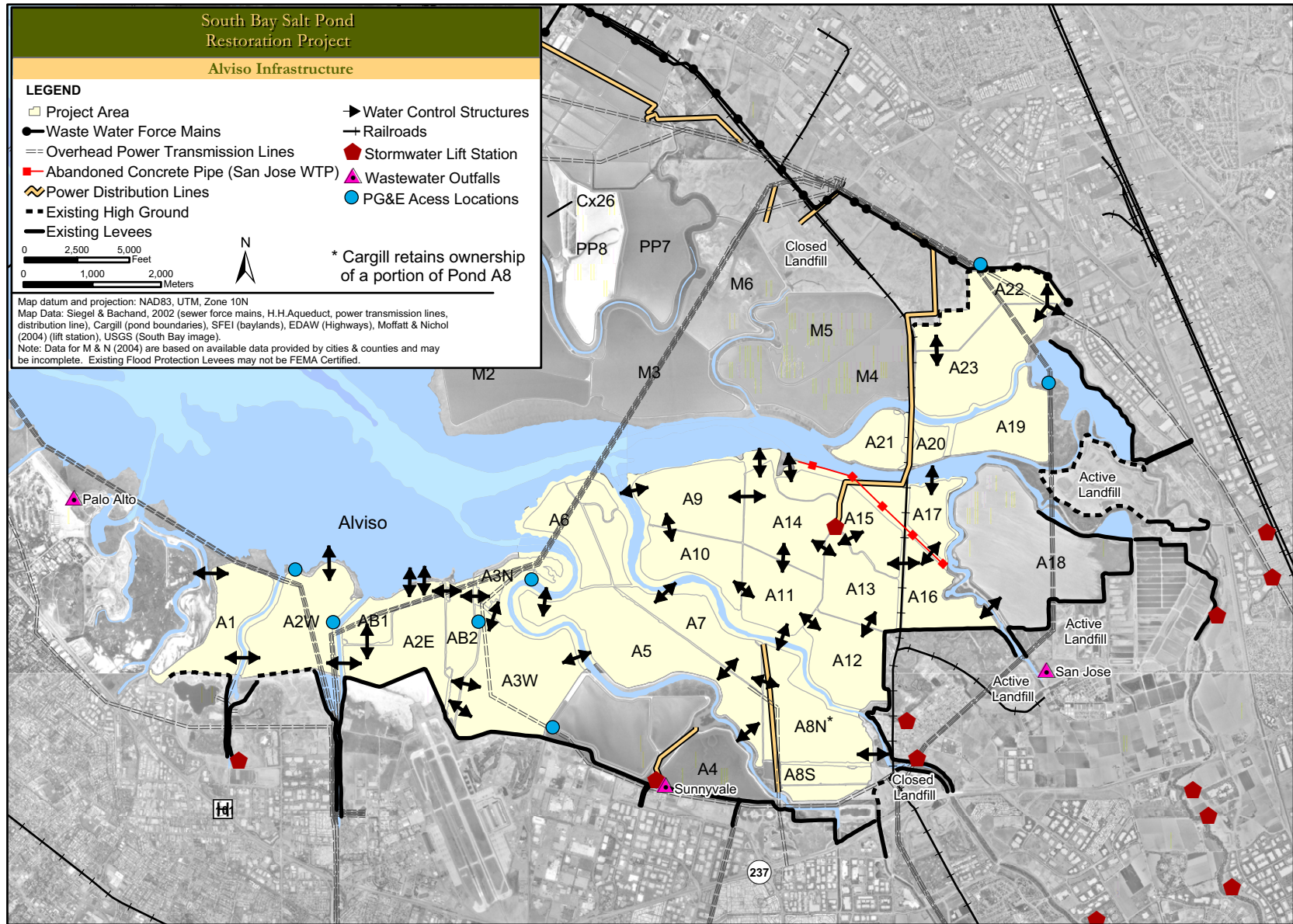
**U.S. FISH & WILDLIFE SERVICE - SACRAMENTO REGION (USFWS)**  
 2800 COTTAGE WAY, RM W-2605  
 SACRAMENTO, CA 95825

**VICINITY MAP**

*figure 1*

STATE: CA

APPLICATION BY: USFWS



**PURPOSE: OPERATIONS & MAINTENANCE**

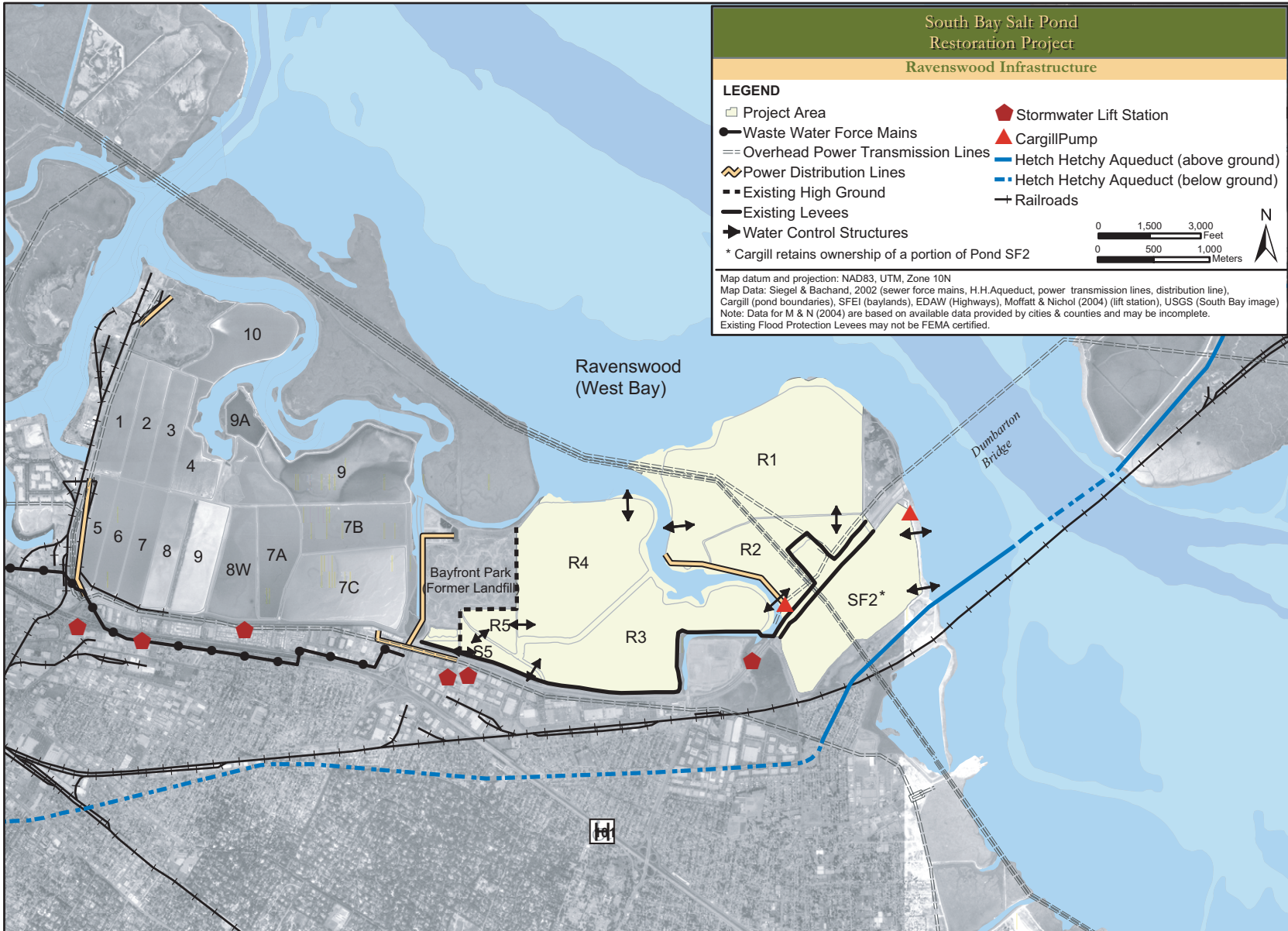
**DATUM: NORTH AMERICAN 1983**

Note: Water control structures include:  
a) two-way water control structures  
b) pumps  
c) siphons

**U.S. FISH & WILDLIFE SERVICE - SACRAMENTO REGION (USFWS)**  
**2800 COTTAGE WAY, RM W-2605**  
**SACRAMENTO, CA 95825**

**ALVISO INFRASTRUCTURE**

*figure 2*



**PURPOSE: OPERATIONS & MAINTENANCE**

**DATUM: NORTH AMERICAN 1983**

Note: Water control structures include:  
a) two-way water control structures  
b) pumps  
c) siphons

**U.S. FISH & WILDLIFE SERVICE - SACRAMENTO REGION (USFWS)**  
**2800 COTTAGE WAY, RM W-2605**  
**SACRAMENTO, CA 95825**

**RAVENSWOOD INFRASTRUCTURE**

*figure 3*



PURPOSE: OPERATIONS & MAINTENANCE

U.S. FISH & WILDLIFE SERVICE - SACRAMENTO REGION (USFWS)  
 2800 COTTAGE WAY, RM W-2605  
 SACRAMENTO, CA 95825

DATUM: NORTH AMERICAN 1983

TYPICAL SALT POND FEATURES (POND A6)

*figure 4*