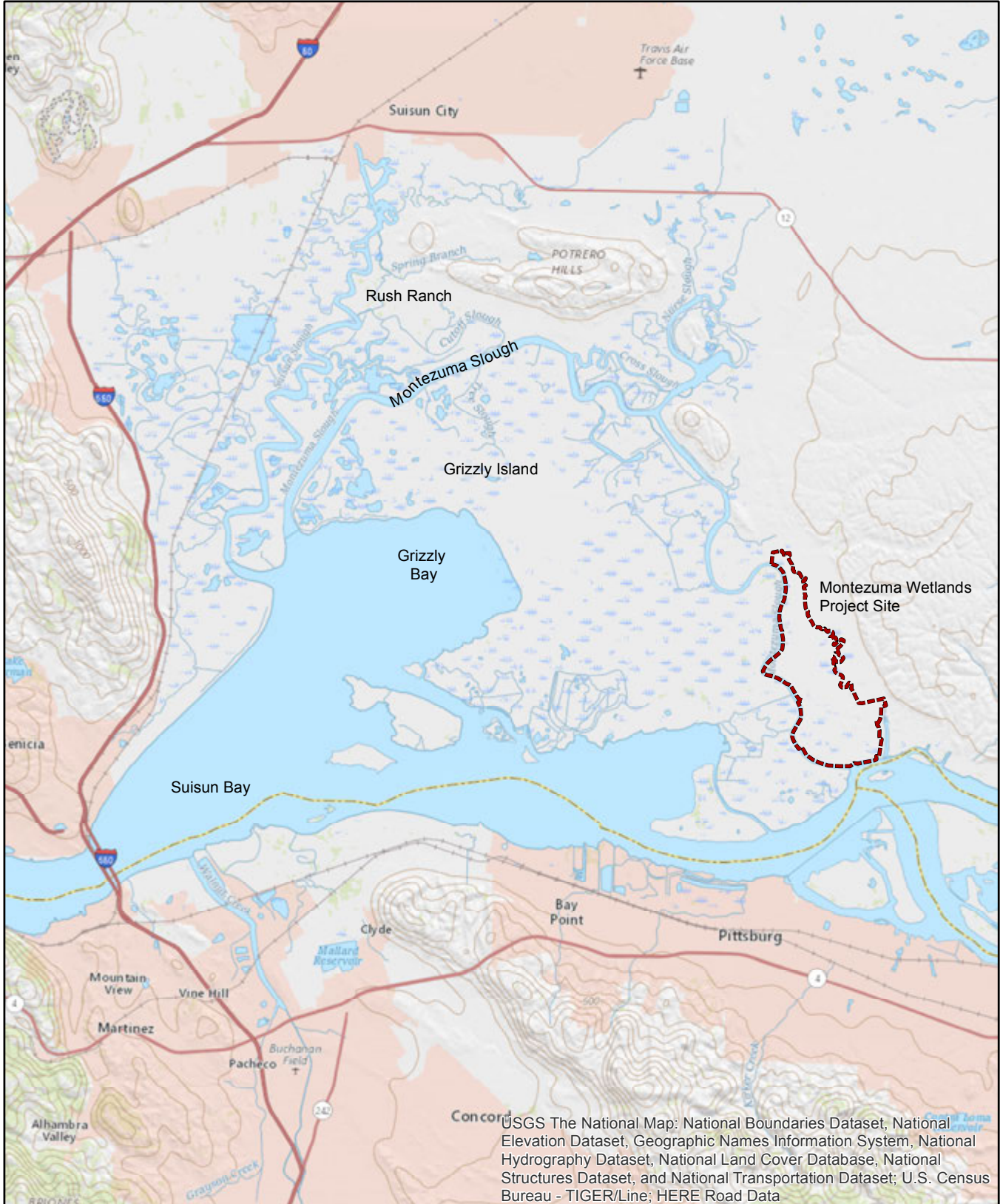
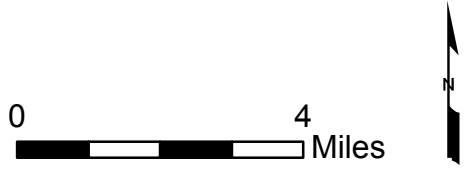


P:\Project\11000s\Montezuma\CAD\Measure\Grant1_Siteloc\Map.mxd



USGS The National Map: National Boundaries Dataset, National Elevation Dataset, Geographic Names Information System, National Hydrography Dataset, National Land Cover Database, National Structures Dataset, and National Transportation Dataset; U.S. Census Bureau - TIGER/Line; HERE Road Data



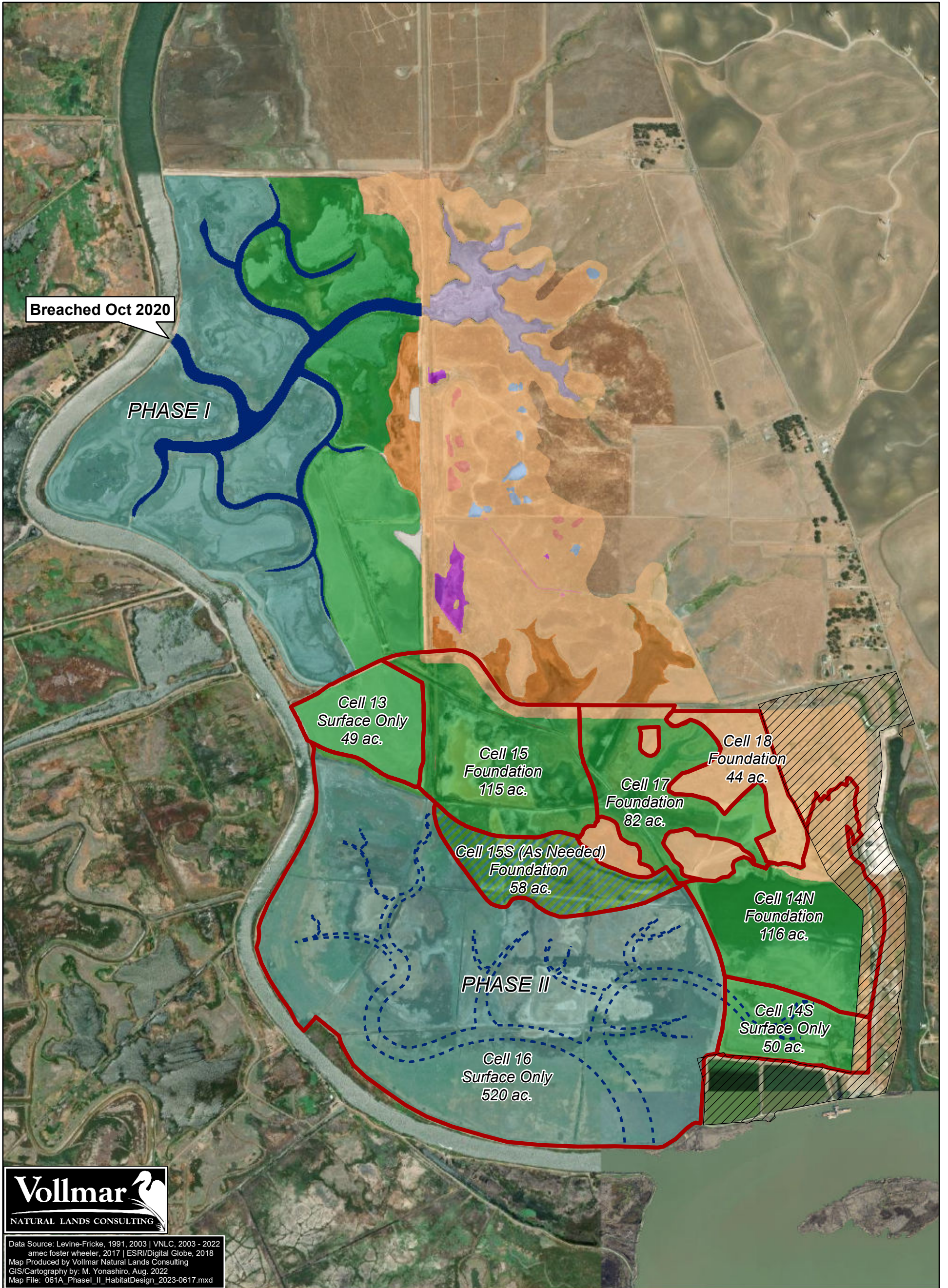
REGIONAL MAP
Montezuma Wetlands Project
Suisun Bay, California



Date: 11/05/2017

Project No. 11095

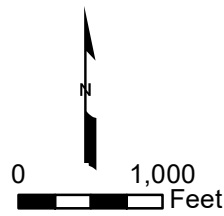
Figure
1



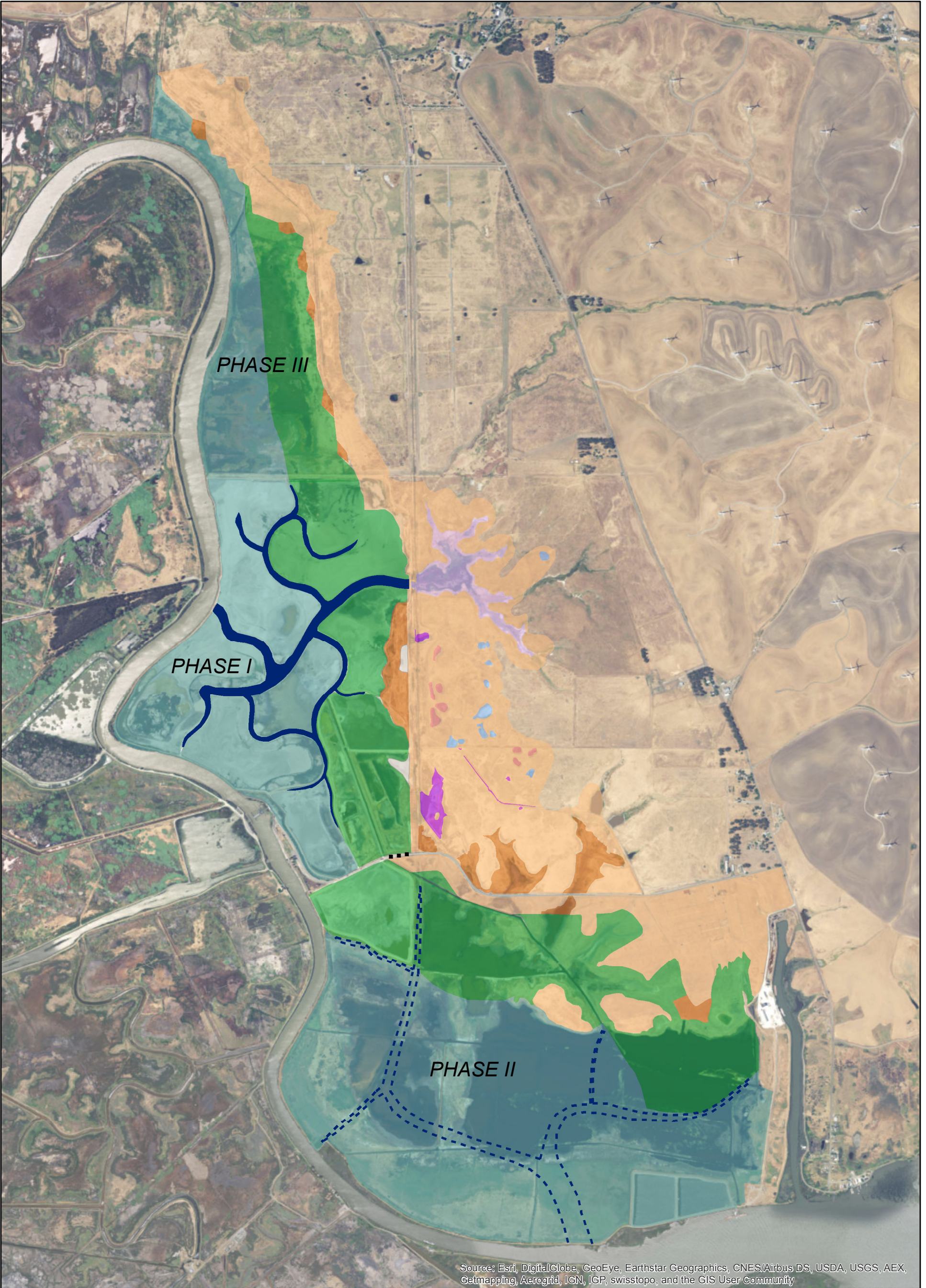
Data Source: Levine-Fricke, 1991, 2003 | VNLC, 2003 - 2022
 amec foster wheeler, 2017 | ESRI/Digital Globe, 2018
 Map Produced by Vollmar Natural Lands Consulting
 GIS/Cartography by: M. Yonashiro, Aug. 2022
 Map File: 061A_Phase_II_HabitatDesign_2023-0617.mxd

Explanation:

- | | |
|----------------------------------|-----------------------------------|
| Water-related Industrial Reserve | Created Vernal Pools |
| Cell Boundary | Preserved Vernal Pools |
| Clank Hollow | Avoided Vernal Pools |
| Intertidal Channels | Upland Transition and Buffer |
| Low Intertidal Marsh | Seasonally Wet Depressions |
| High Intertidal Marsh | Least Tern Areas |
| High Marsh if Cell 15S is Built | Anticipated Future Tidal Channels |











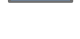



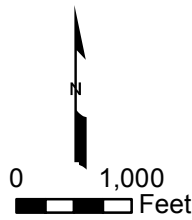
PHASE I AND PROPOSED PHASE II HABITAT DESIGN Montezuma Wetlands Project	
Date: 06/27/2023	Project No. 11095
Figure 3	



Source: Esri, DigitalGlobe, GeoEye, Earthstar Geographics, CNES/Airbus DS, USDA, USGS, AEX, Getmapping, Aerogrid, IGN, IGP, swisstopo, and the GIS User Community

Explanation:

- | | |
|--|--|
|  Clank Hollow |  Avoided Vernal Pools |
|  Intertidal Channels |  Upland Transition and Buffer |
|  Low Intertidal Marsh |  Seasonally Wet Depressions |
|  High Intertidal Marsh |  Least Tern Areas |
|  Created Vernal Pools |  Anticipated Future Tidal Channels |
|  Preserved Vernal Pools |  SMHM Crossings Under Road (not to scale) |



**RESTORATION DESIGN
PHASES I, II, AND III
Montezuma Wetlands Project**



Date: 12/01/2017 Project No. 11095

**Figure
2**