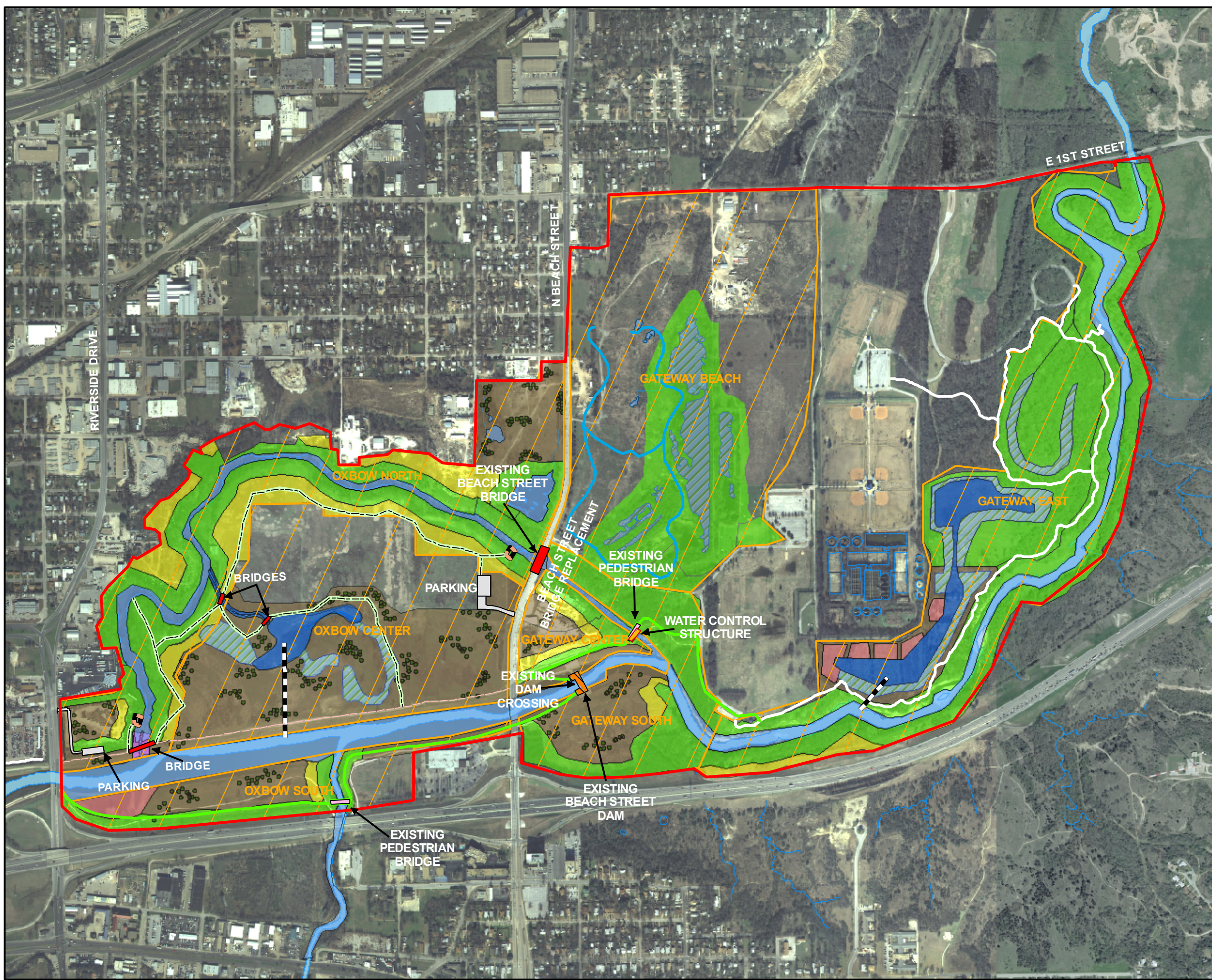
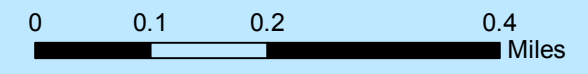


Central City
Figure 2 - Approved
Riverside Oxbow Ecosystem
Restoration Project
 (Plan Approved by
 Secretary of the Army)



- Legend**
- ORIGINAL STUDY AREA BOUNDARY
 - STUDY AREA ZONE BOUNDARIES
 - BRIDGE
 - STREAMS
 - PLAN FEATURES**
 - MAINTENANCE ACCESS
 - WETLAND PUMP
 - TXDOT TRAIL
 - EQUESTRIAN TRAIL
 - EXISTING TRAIL
 - EXISTING TRAIL TO BE REBUILT
 - PROPOSED TRAIL
 - PROPOSED TREES
 - EXISTING WATER
 - NEW LAKES
 - PLUG/CHANNEL VEGETATION
 - RIPARIAN WOODLANDS
 - RIPARIAN BUFFER
 - WET SOIL MANAGEMENT
 - WETLAND
 - NATIVE GRASSLANDS



Aerial Photography Date: January 2005



US Army Corps
of Engineers
 Fort Worth District

ATTENTION

This product is reproduced from geospatial information prepared by the U.S. Army Corps of Engineers. GIS data and product accuracy may vary. They may be developed from sources of differing accuracy, accurate only at certain scales, based on modeling or interpretation, incomplete while being created or revised, etc... Using GIS products for purposes other than those for which they were created may yield inaccurate or misleading results. The Corps of Engineers reserves the right to correct, update, modify, or replace GIS products without notification. For more information contact the Fort Worth District Planning office. As of 8/24/2007