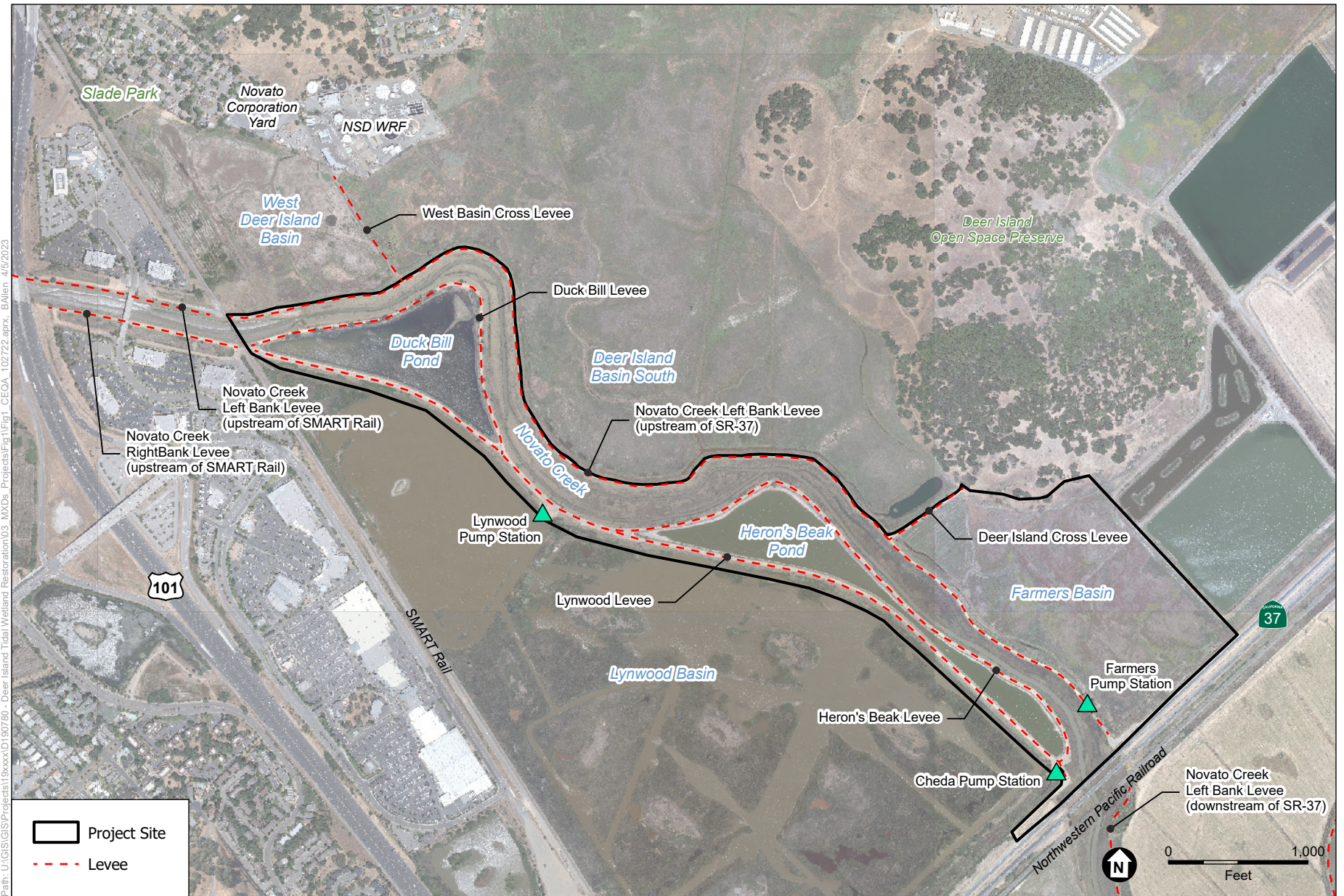


Path: U:\GIS\GIS\Projects\19xxxx\1907860 - Deer Island Tidal Wetland Restoration\03_MXD - Projects\Fig 1\Fig1_CEOA_102722.aprx; Ballen: 4/5/2023

SOURCE: USDA, 2018; National Geographic, 2022; ESA, 2022

Deer Island Basin Complex Tidal Wetland Restoration - Phase 1 Bird Ponds

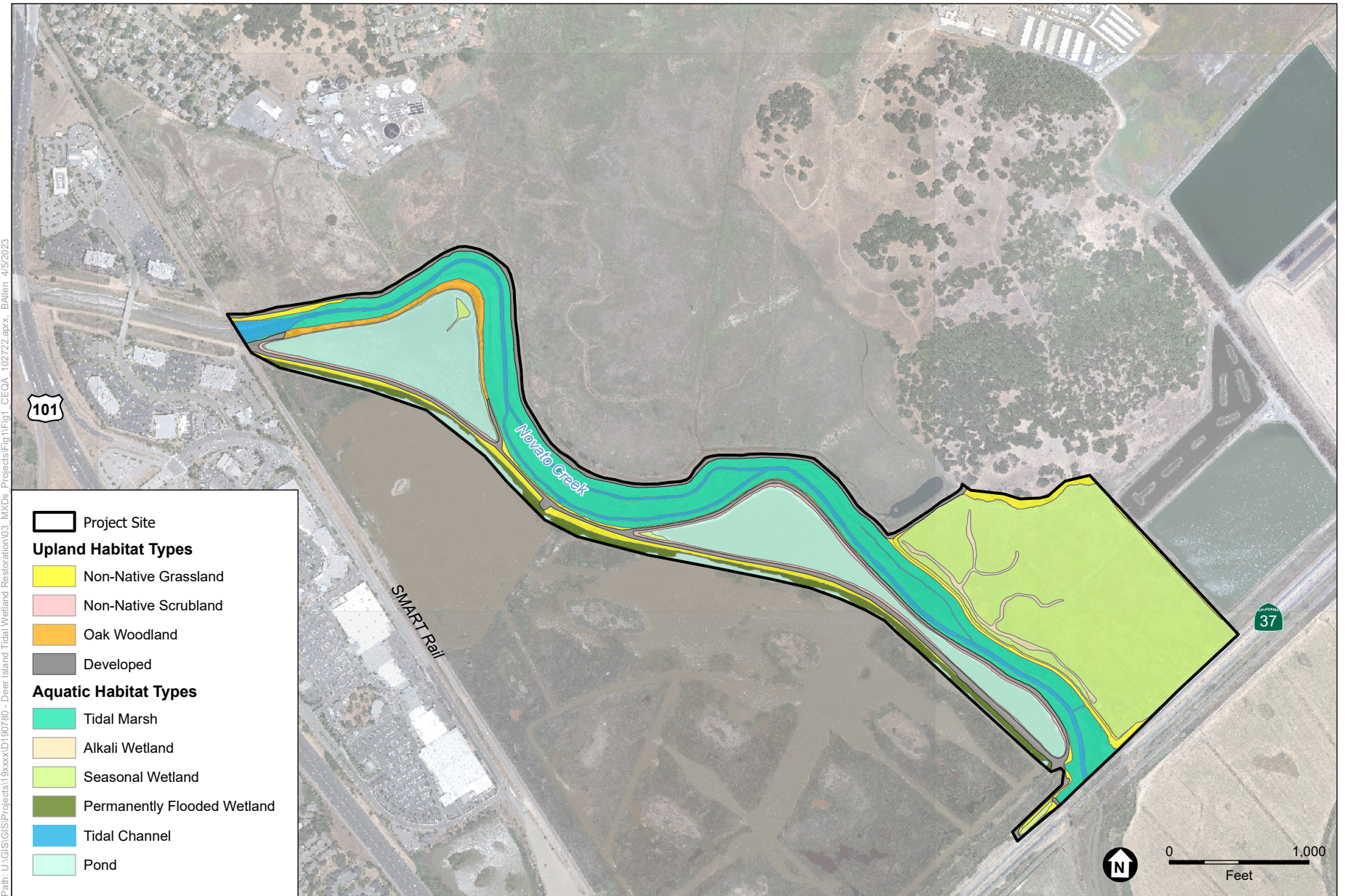
Figure 1
Regional Location



SOURCE: Marin Map, 2014; ESA, 2022

Deer Island Basin Complex Tidal Wetland Restoration - Phase 1 Bird Ponds

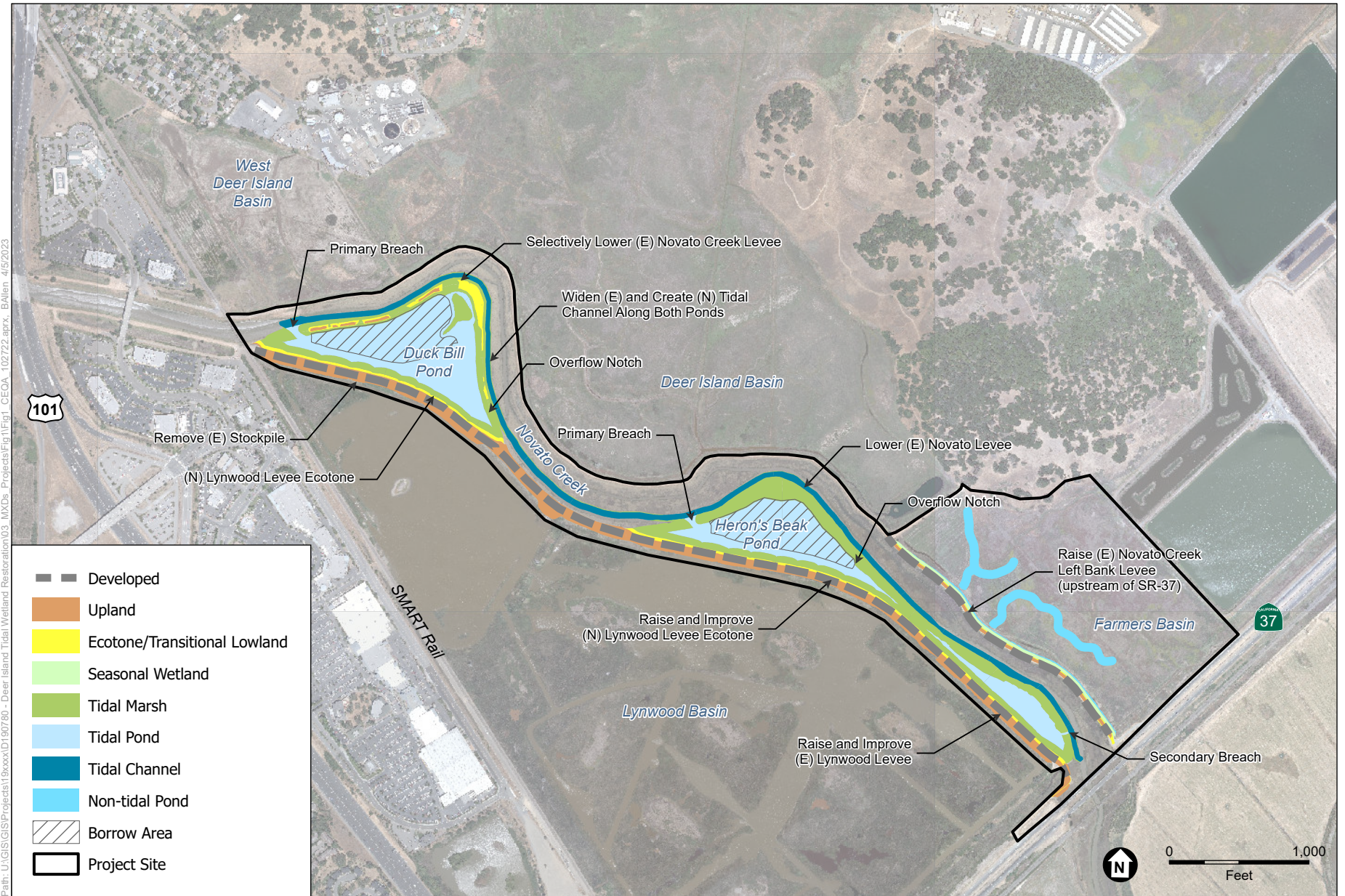
Figure 2
Project Area



SOURCE: Marin Map, 2014; ESA, 2022

Deer Island Basin Complex Tidal Wetland Restoration - Phase 1 Bird Ponds

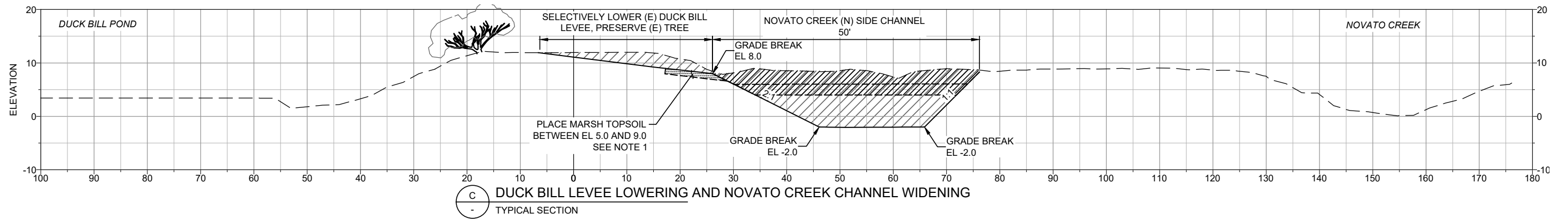
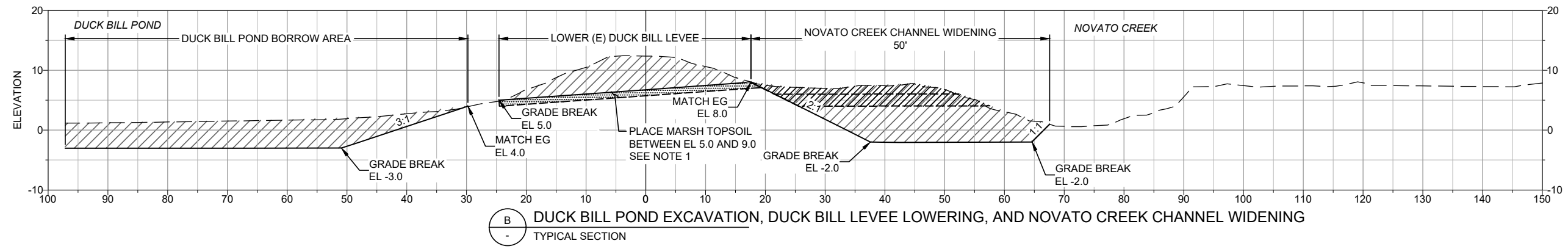
Figure 4
Habitat Types



SOURCE: Marin Map, 2014; ESA, 2022

Deer Island Basin Complex Tidal Wetland Restoration - Phase 1 Bird Ponds

Figure 5
Bird Ponds Restoration Plan



S2019/02019007/80.00 - Deer Island Tidal Wetland Restoration_Marin Co/05 Graphics-GIS-Modeling/Illustrator

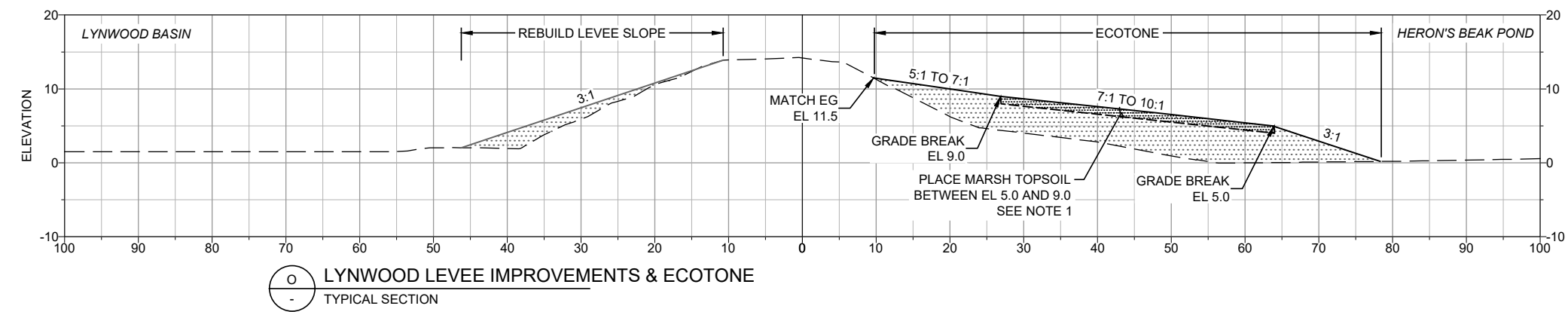
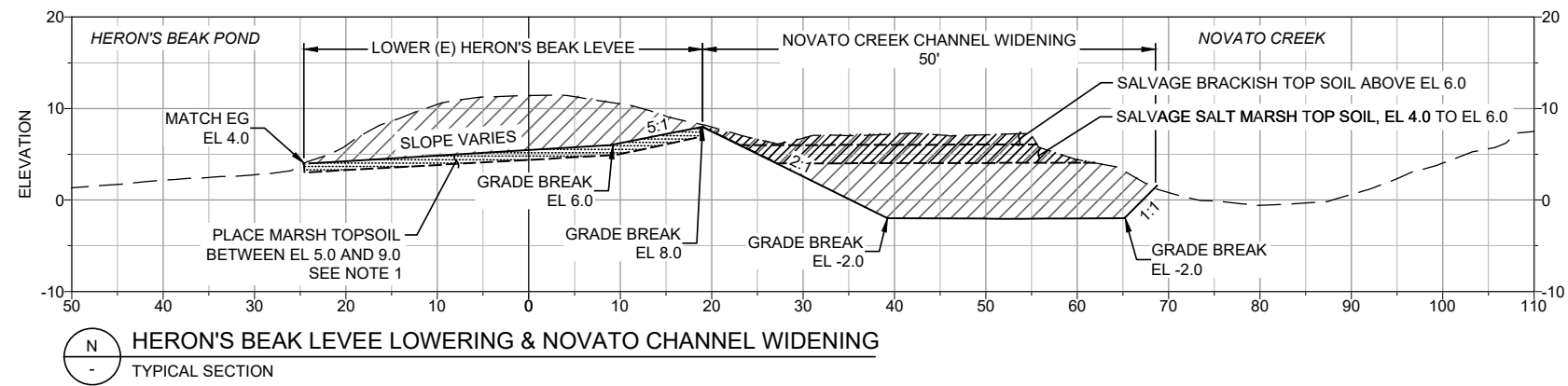
SOURCE: ESA, 2022

Deer Island Basin Complex Tidal Wetland Restoration - Phase 1 Bird Ponds

Figure 6a

Duck Bill Pond – Representative Cross-Sections





S2019/02019007/80.00 - Deer Island Tidal Wetland Restoration_Marin Co/05 Graphics-GIS-Modeling/Illustrator

SOURCE: ESA, 2022

Deer Island Basin Complex Tidal Wetland Restoration - Phase 1 Bird Ponds



Figure 6b
Heron's Beak Pond/Lynwood Levee – Representative Cross-Sections

**TABLE 4
PERMANENT IMPACTS ON AQUATIC RESOURCES**

Aquatic Feature	Reason for impact	Cut (acres)	Cut (cubic yards)	Fill (acres)	Fill (cubic yards)
SW5	Ecotone creation along Lynwood levee	-	-	0.061	161
SW7	Ecotone creation along Lynwood levee	-	-	0.121	940
AW2	Levee raise along Farmers basin	-	-	0.125	388
SW1	Levee raise along Farmers basin	-	-	1.236	7,668
SW5	Lower Novato US RB US 37 levee along Duck Bill Pond	0.241	634	-	-
PFW1	Lynwood levee raise	0.021	15	1.385	5,110
TM3	Lynwood levee raise	-	-	0.204	381
TM1	Novato channel expansion	0.007	4	-	-
TM2	Novato channel expansion	1.411	17,607	-	-
TM3	Novato channel expansion	6.486	72,659	-	-
AW2	Seasonal pond creation	0.751	5,830	-	-
SW1	Seasonal pond creation	2.465	17,203	-	-
Subtotal Wetlands		11.382	113,953	3.132	14,648
Novato Creek	Novato channel expansion	1.257	8,048	-	-
OW2	Lynwood levee raise	-	-	0.004	8
OW3	Lynwood levee raise	-	-	0.086	278
OW6	Lynwood levee raise	-	-	0.237	1,333
OW7	Ecotone creation along Lynwood levee	-	-	4.157	31,140
OW8	Ecotone creation along Lynwood levee	-	-	2.789	25,999
OW7	Tidal pond creation	6.143	31,707	-	-
OW8	Tidal pond creation	5.989	34,106	-	-
Subtotal Other Waters		13.388	73,861	7.273	58,757
Total Permanent Impacts Below MHW (Section 10)		1.257	8,048	-	-
Total Permanent Impacts on Aquatic Resources (Section 404)		24.770	187,814	10.405	73,405

NOTE: MHW = Mean High Water, SW = Seasonal Wetland, AW = Alkali Wetland, PFW = Permanently Flooded Wetland,
TM = Tidal Marsh, OW = Open Water