

# MATTOLE SALMON GROUP

PLANS FOR CONSTRUCTION OF  
**LOWER BEAR CREEK SLOUGH ENHANCEMENT PROJECT**  
**MATTOLE RIVER, PETROLIA, CA**

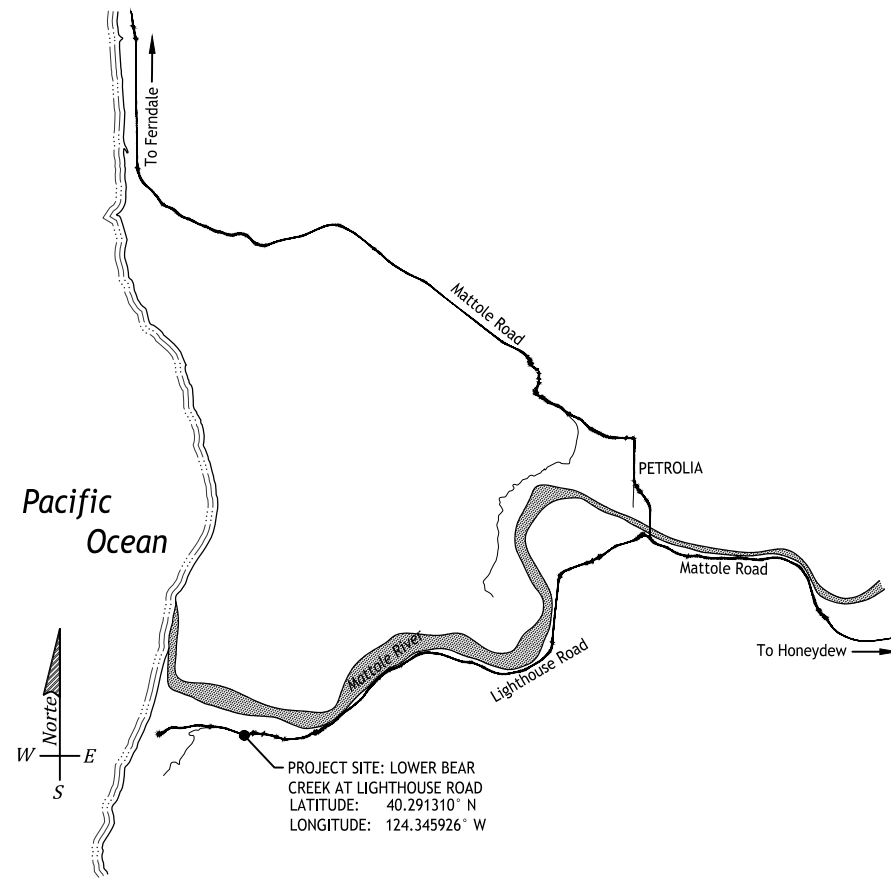
MARCH 2023  
 FINAL

Prepared For:

- MATTOLE SALMON GROUP
- WILDLIFE CONSERVATION BOARD (AGREEMENT WC-1735BC)
- CALIFORNIA COASTAL CONSERVANCY




**VICINITY MAP**  
 NOT TO SCALE



**LOCATION MAP**  
 NOT TO SCALE

PROJECT SITE: LOWER BEAR CREEK AT LIGHTHOUSE ROAD  
 LATITUDE: 40.291310° N  
 LONGITUDE: 124.345926° W

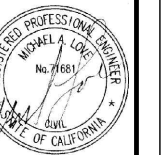
 **Michael Love & Associates, Inc.**  
 PO Box 4477 • Arcata, CA 95518 (707) 822-2411

 812 W. WABASH AVE.  
 EUREKA, CA. 95501  
 WWW.SHN-ENGR.COM  
 707-441-8855



**Mattole Salmon Group**  
 PO BOX 188  
 Petrolia CA 95558

**Michael Love & Associates, Inc.**  
 PO Box 4477 • Arcata, CA 95518 • (707) 822-2411  
 812 W. WABASH AVE.  
 EUREKA, CA 95501  
 WWW.SHN-ENGR.COM  
 707-441-8855



VERIFY SCALE  
 THIS BAR IS  
 ONE INCH LONG  
 AT FULL SCALE

Mattole Salmon Group  
 LOWER BEAR CREEK SLOUGH ENHANCEMENT PROJECT

TITLE SHEET

DATE  
 MAR 2023  
 SUBMITTAL

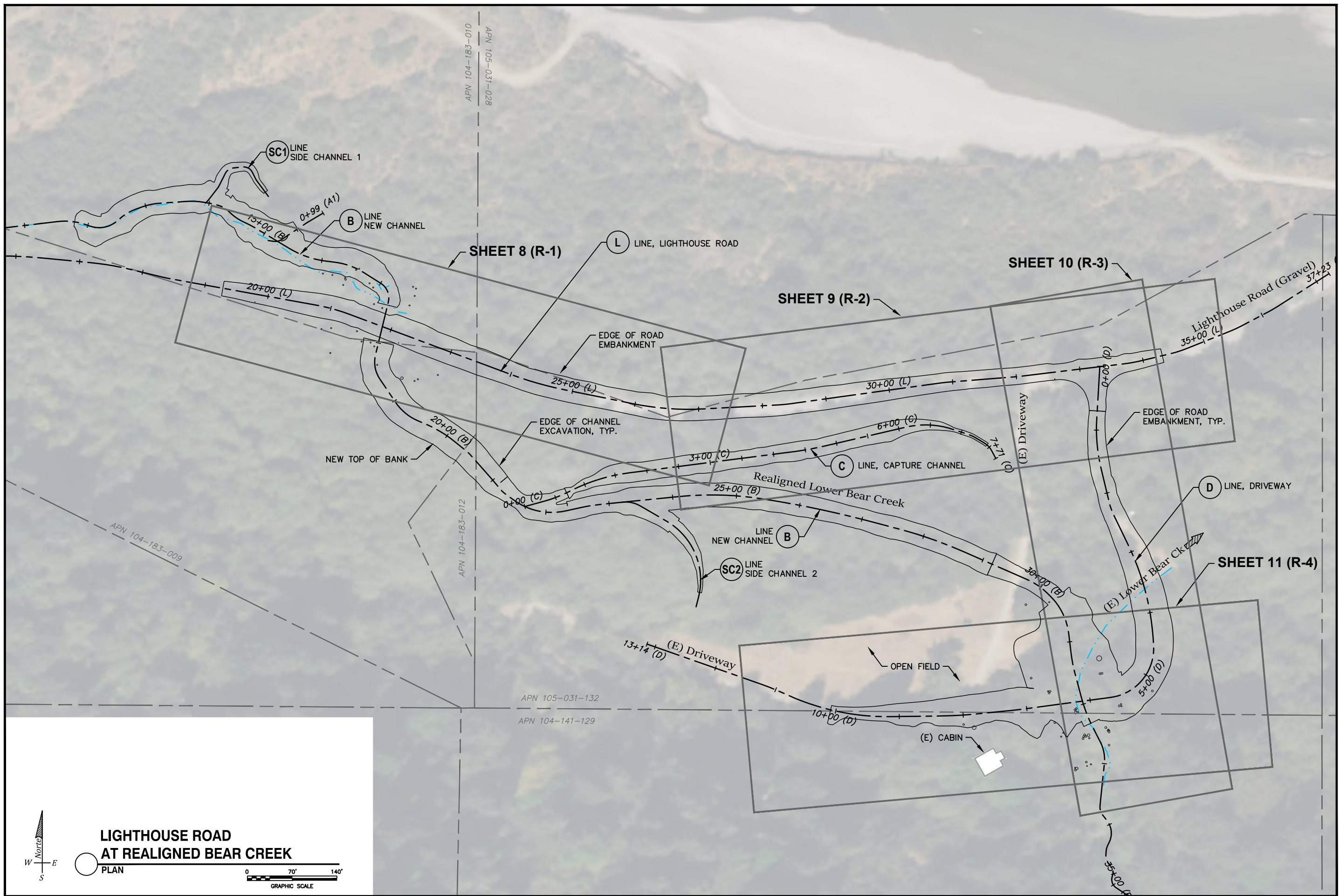
DESIGN  
 FINAL

DRAWN  
 AL / ML

SHEET  
 AL

1 of 42

G-1



**Michael Love & Associates, Inc.**  
 PO Box 4477 • Arcata, CA 95518 • (707) 822-2411  
**Mattole Salmon Group**  
 PO BOX 188  
 Petrolia CA 95558



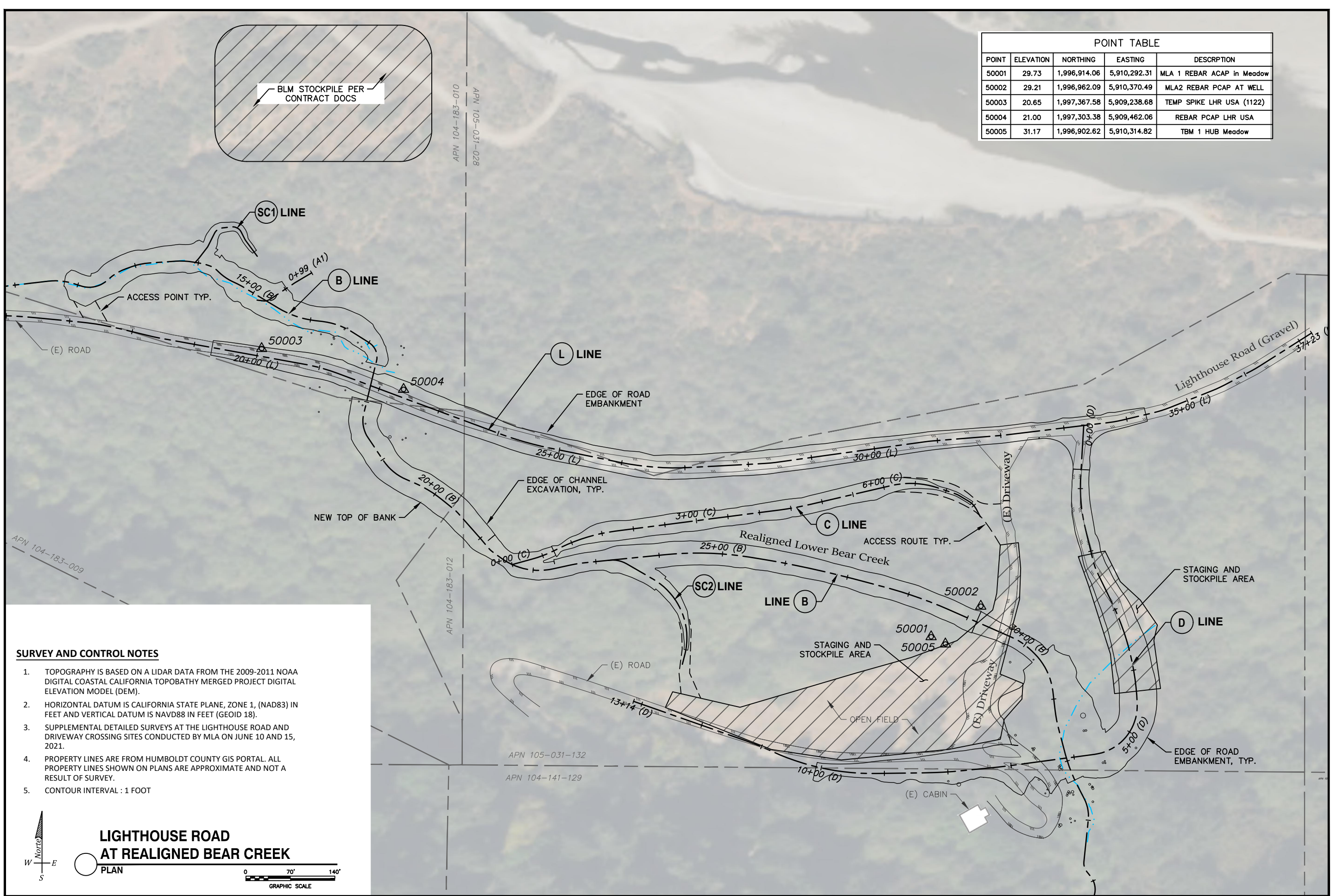
VERIFY SCALE  
 THIS BAR IS  
 ONE INCH LONG  
 AT FULL SCALE

Mattole Salmon Group LOWER BEAR CREEK SLOUGH ENHANCEMENT PROJECT <b>SHEET INDEX - ROAD</b>
DATE <b>MAR 2023</b> SUBMITTAL DESIGN <b>FINAL</b> DRAWN <b>AL / ML</b> SHEET <b>AL</b>
<b>4 of 42</b>
<b>G-4</b>

**LIGHTHOUSE ROAD AT REALIGNED BEAR CREEK**

PLAN





POINT TABLE				
POINT	ELEVATION	NORTHING	EASTING	DESCRIPTION
50001	29.73	1,996,914.06	5,910,292.31	MLA 1 REBAR ACAP in Meadow
50002	29.21	1,996,962.09	5,910,370.49	MLA2 REBAR PCAP AT WELL
50003	20.65	1,997,367.58	5,909,238.68	TEMP SPIKE LHR USA (1122)
50004	21.00	1,997,303.38	5,909,462.06	REBAR PCAP LHR USA
50005	31.17	1,996,902.62	5,910,314.82	TBM 1 HUB Meadow

**SURVEY AND CONTROL NOTES**

1. TOPOGRAPHY IS BASED ON A LIDAR DATA FROM THE 2009-2011 NOAA DIGITAL COASTAL CALIFORNIA TOPOBATHY MERGED PROJECT DIGITAL ELEVATION MODEL (DEM).
2. HORIZONTAL DATUM IS CALIFORNIA STATE PLANE, ZONE 1, (NAD83) IN FEET AND VERTICAL DATUM IS NAVD88 IN FEET (GEOID 18).
3. SUPPLEMENTAL DETAILED SURVEYS AT THE LIGHTHOUSE ROAD AND DRIVEWAY CROSSING SITES CONDUCTED BY MLA ON JUNE 10 AND 15, 2021.
4. PROPERTY LINES ARE FROM HUMBOLDT COUNTY GIS PORTAL. ALL PROPERTY LINES SHOWN ON PLANS ARE APPROXIMATE AND NOT A RESULT OF SURVEY.
5. CONTOUR INTERVAL : 1 FOOT



**Michael Love & Associates, Inc.**  
 PO Box 4477 • Arcata, CA 95518 • (707) 822-2411

**Mattolo Salmon Group**  
 PO BOX 188  
 Petrolia CA 95558

REGISTERED PROFESSIONAL ENGINEER  
 MICHAEL A. LOVE  
 No. 71681  
 STATE OF CALIFORNIA

VERIFY SCALE  
 THIS BAR IS ONE INCH LONG AT FULL SCALE

Lower Bear Creek Slough Enhancement Project  
**ACCESS AND STOCKPILING AND CONTROL POINTS**

DATE: MAR 2023  
 SUBMITTAL: FINAL DESIGN  
 DRAWN: AL / ML  
 SHEET: AL  
 7 of 42  
 G-7