

NOT TO SCALE

SAWTOOTH LAKE MIXED USE
MIDDLETON, IDAHO

FIGURE 1
DATE: 3/15/2022

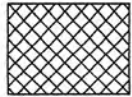
VICINITY MAP

JAMES FRONK CONSULTING, LLC
14028 NORWOOD RD.
MCCALL, ID 83638
(208) 634-8093



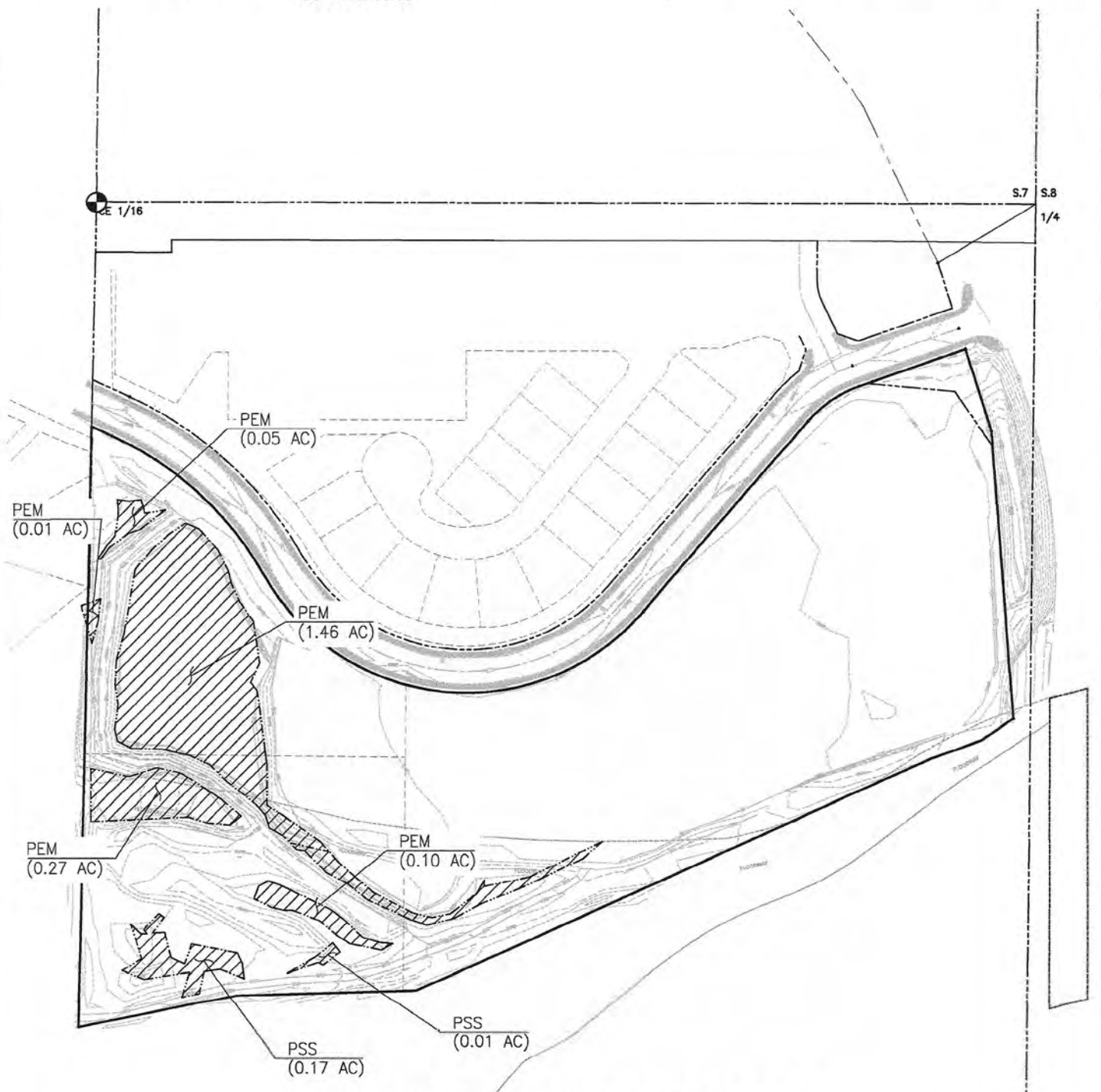
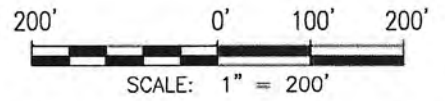
3313 W CHERRY LANE
#507
MERIDIAN, ID 83642
208.918.0928
WWW.BLUEPEAKENG.COM

LEGEND



EXISTING WETLANDS

PEM = 1.89 acres
PSS = 0.18 acres



SAWTOOTH LAKE MIXED USE MIDDLETON, IDAHO

FIGURE 2
DATE: 3/15/2022

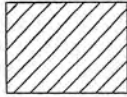
WETLAND DELINEATION MAP
(T-O DELINEATION OCTOBER 16, 2016)

JAMES FRONK CONSULTING, LLC
14028 NORWOOD RD.
MCCALL, ID 83638
(208) 634-8093

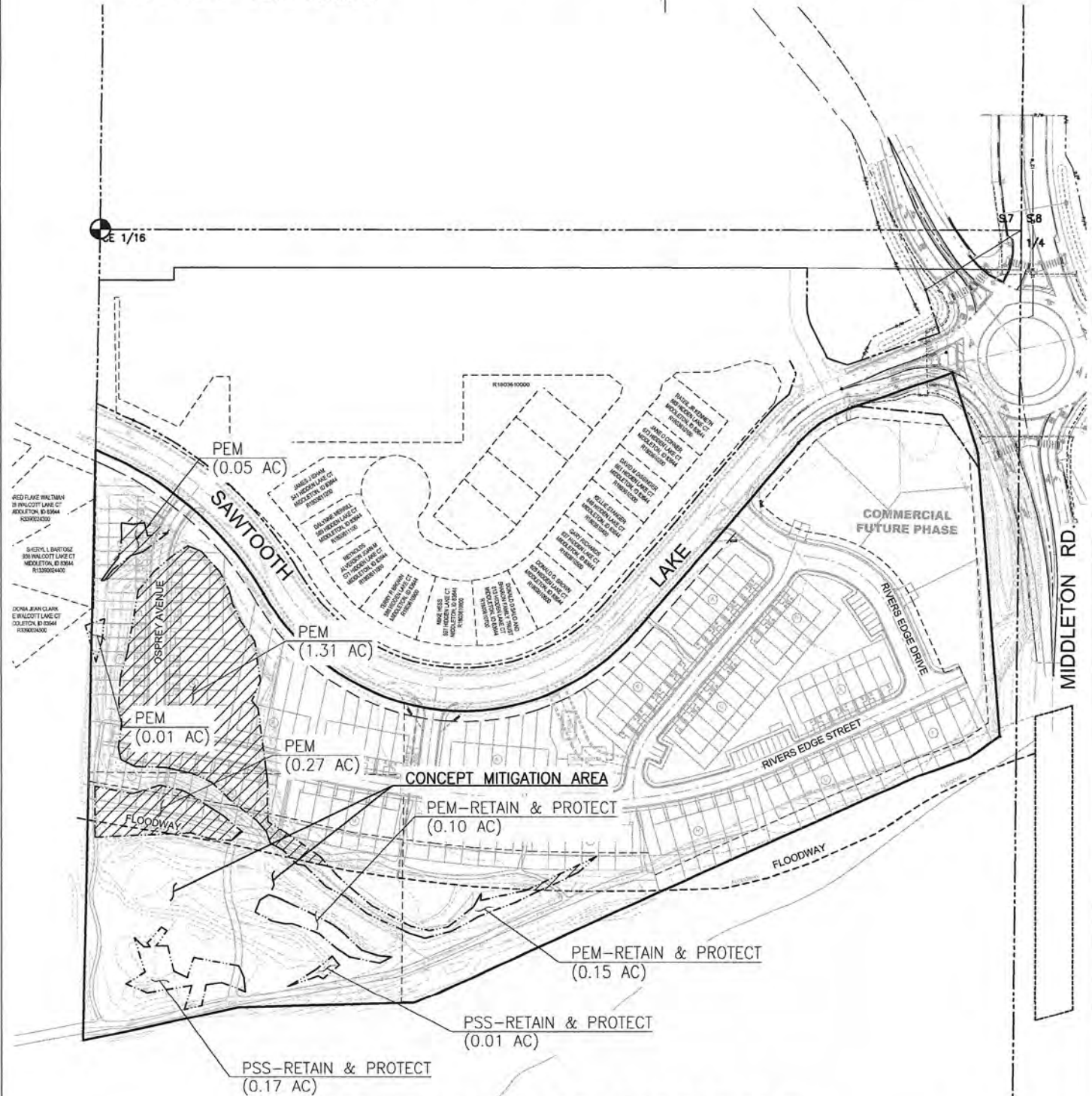
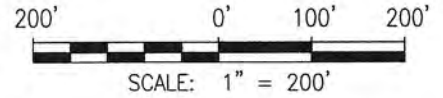
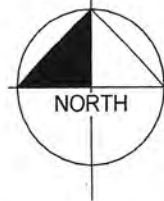


3313 W CHERRY LANE
#507
MERIDIAN, ID 83642
208.918.0928
WWW.BLUEPEAKENG.COM

LEGEND



PROPOSED IMPACTED WETLANDS
 PEM = 1.64 acres



SAWTOOTH LAKE MIXED USE MIDDLETON, IDAHO

FIGURE 3
 DATE: 3/15/2022

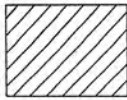
WETLAND IMPACTS SITE MAP

JAMES FRONK CONSULTING, LLC
 14028 NORWOOD RD.
 MCCALL, ID 83638
 (208) 634-8093



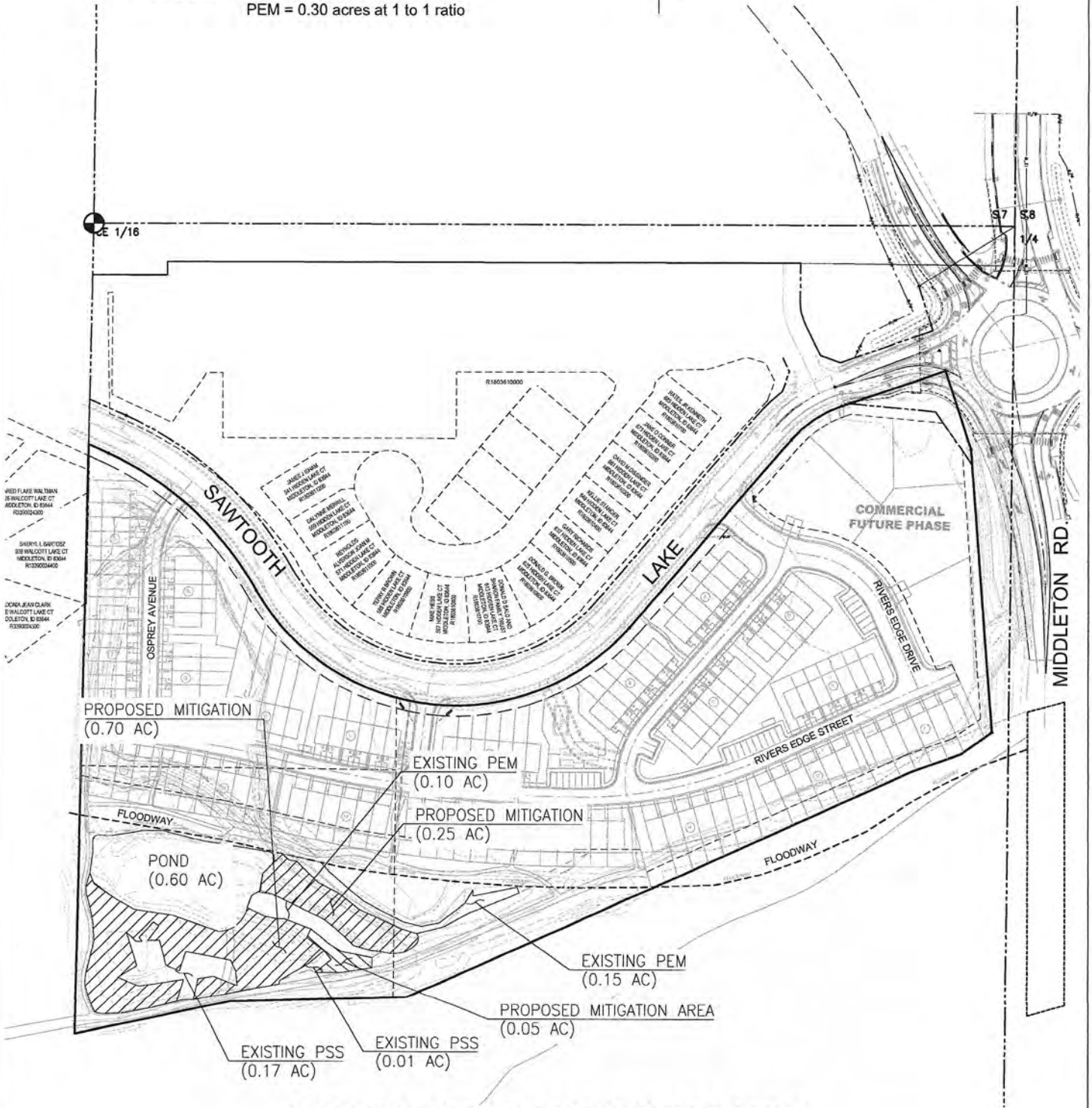
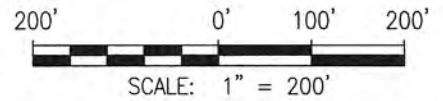
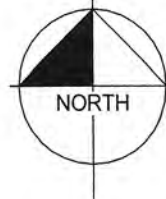
3313 W CHERRY LANE
 #507
 MERIDIAN, ID 83642
 208.918.0928
 WWW.BLUEPEAKENG.COM

LEGEND



PROPOSED MITIGATION

PSS = 0.70 acres at 2 to 1 ratio
 PEM = 0.30 acres at 1 to 1 ratio



SAWTOOTH LAKE MIXED USE MIDDLETON, IDAHO

FIGURE 4
 DATE: 3/15/2022

WETLAND MITIGATION PLAN

JAMES FRONK CONSULTING, LLC
 14028 NORWOOD RD.
 MCCALL, ID 83638
 (208) 634-8093

**BLUE PEAK
 ENGINEERING**

3313 W CHERRY LANE
 #507
 MERIDIAN, ID 83642
 208.918.0928
 WWW.BLUEPEAKENG.COM