



U.S. Department  
of Transportation  
**Maritime  
Administration**

1200 New Jersey Avenue S.E.  
Washington, DC 20590

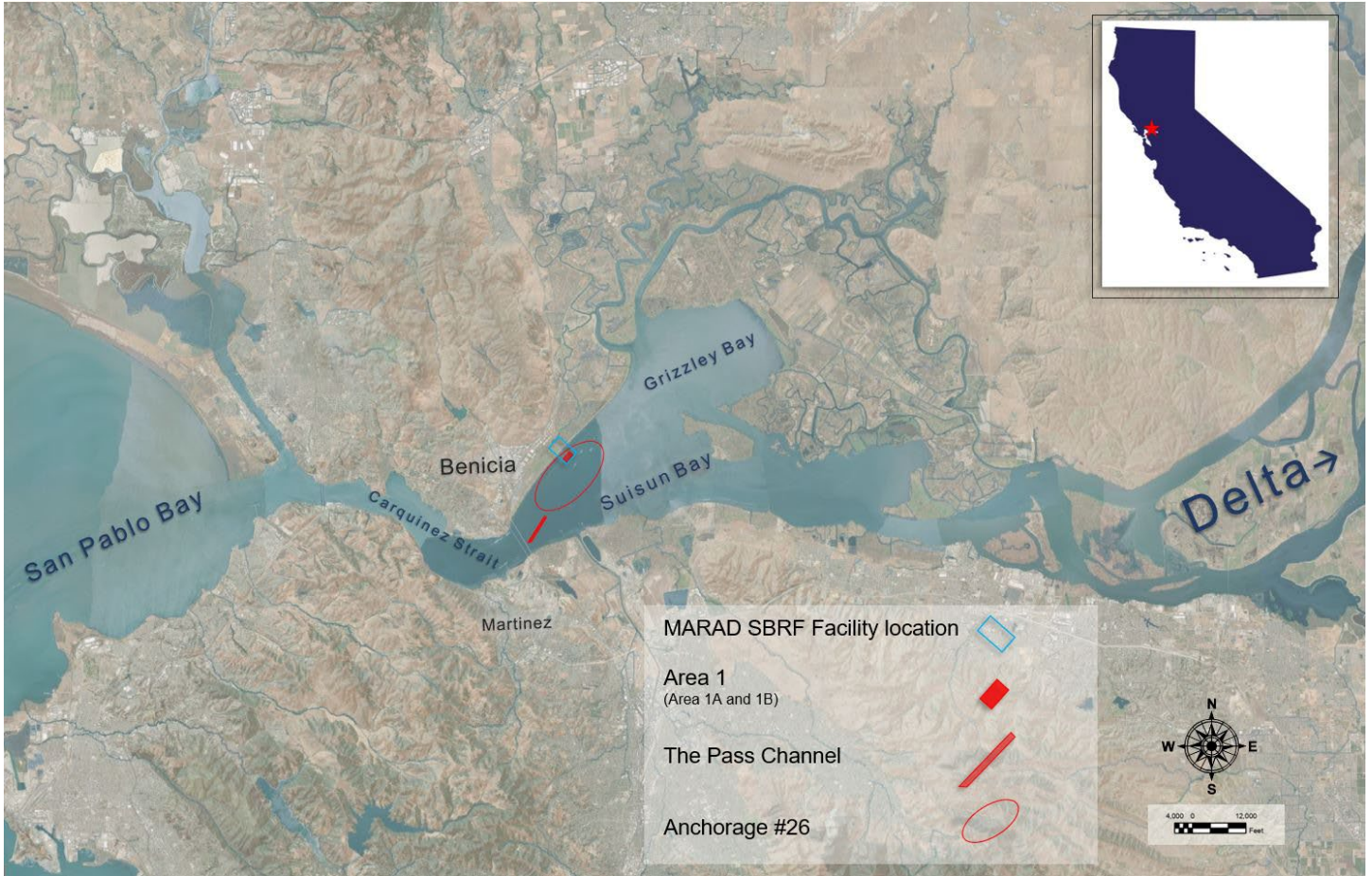


Figure 1: MARAD Project Vicinity and Location Map.



U.S. Department  
of Transportation  
**Maritime  
Administration**

1200 New Jersey Avenue S.E.  
Washington, DC 20590



Figure 2: Area 1 Project Location and Limits .





U.S. Department  
of Transportation  
**Maritime  
Administration**

1200 New Jersey Avenue S.E.  
Washington, DC 20590

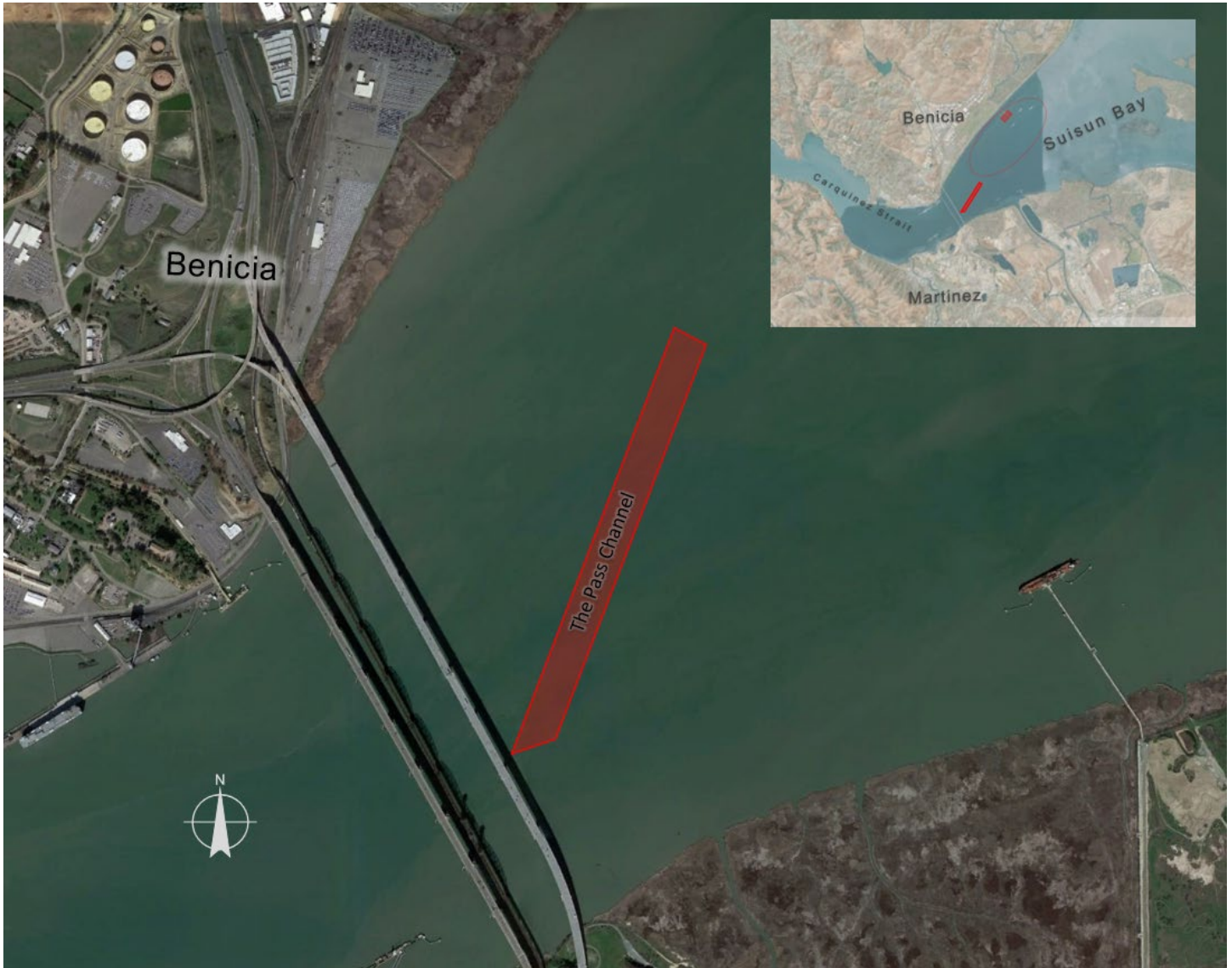


Figure 3: Area 2 (The Pass Channel) Project Location and Limits.



U.S. Department  
of Transportation  
**Maritime  
Administration**

1200 New Jersey Avenue S.E.  
Washington, DC 20590

