

Figure 1-1. Locations for Essex and Ruth Action areas.

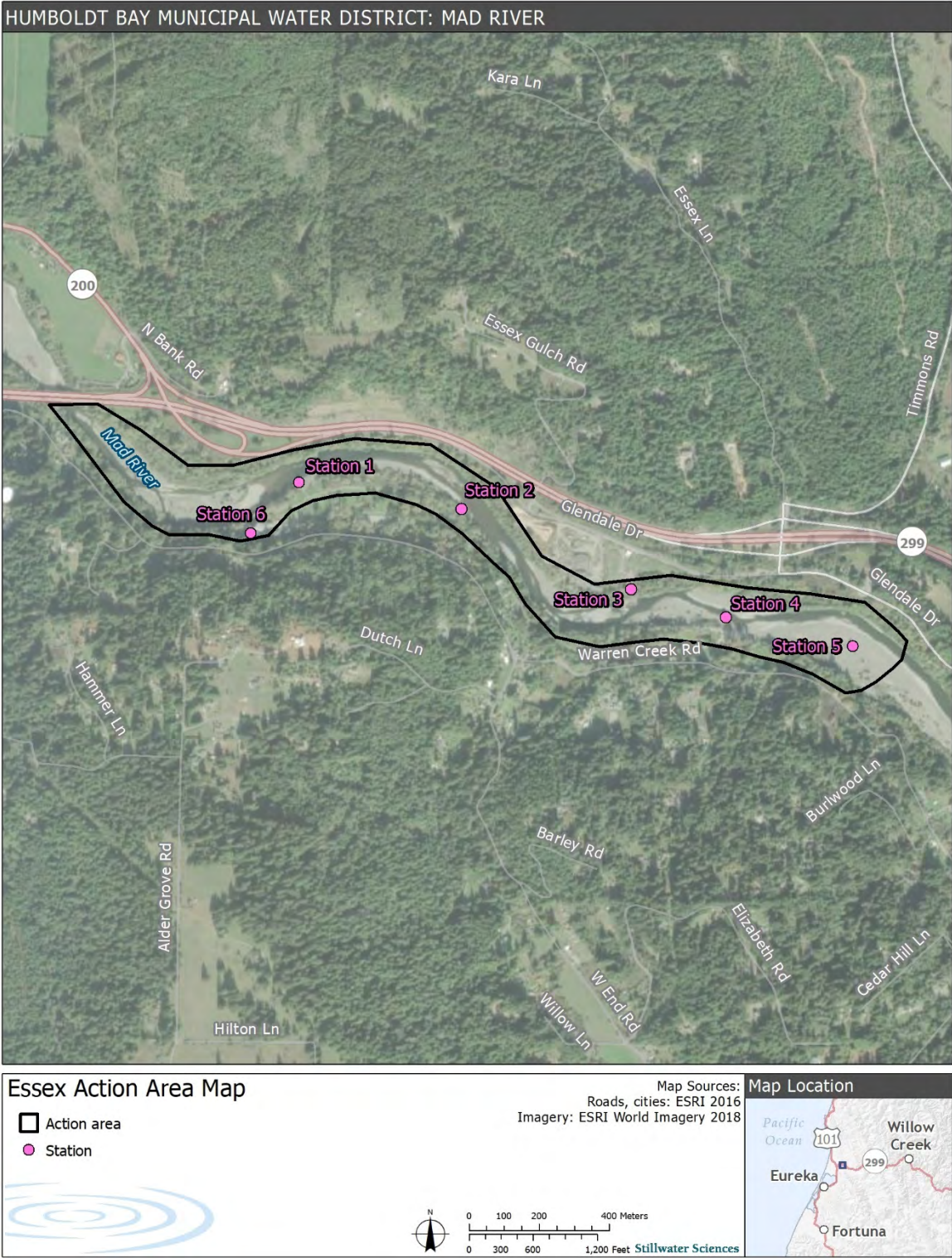


Figure 2-1. Essex Action area map.



Figure 2-2. Ruth Action area map.

Essex

40°54'19.89"N 124° 2'32.69"W

Legend

- Access Pad
- Access Road
- Berm
- Dike/Weir
- Gravel Borrow Area
- Jetty
- Low Flow Channel/Excavation
- Pump Station
- Rip Rap
- Rock Jetty

e

Collector 1

Collector 2

Collector 3

Collector 4

Collector 5

Station 6



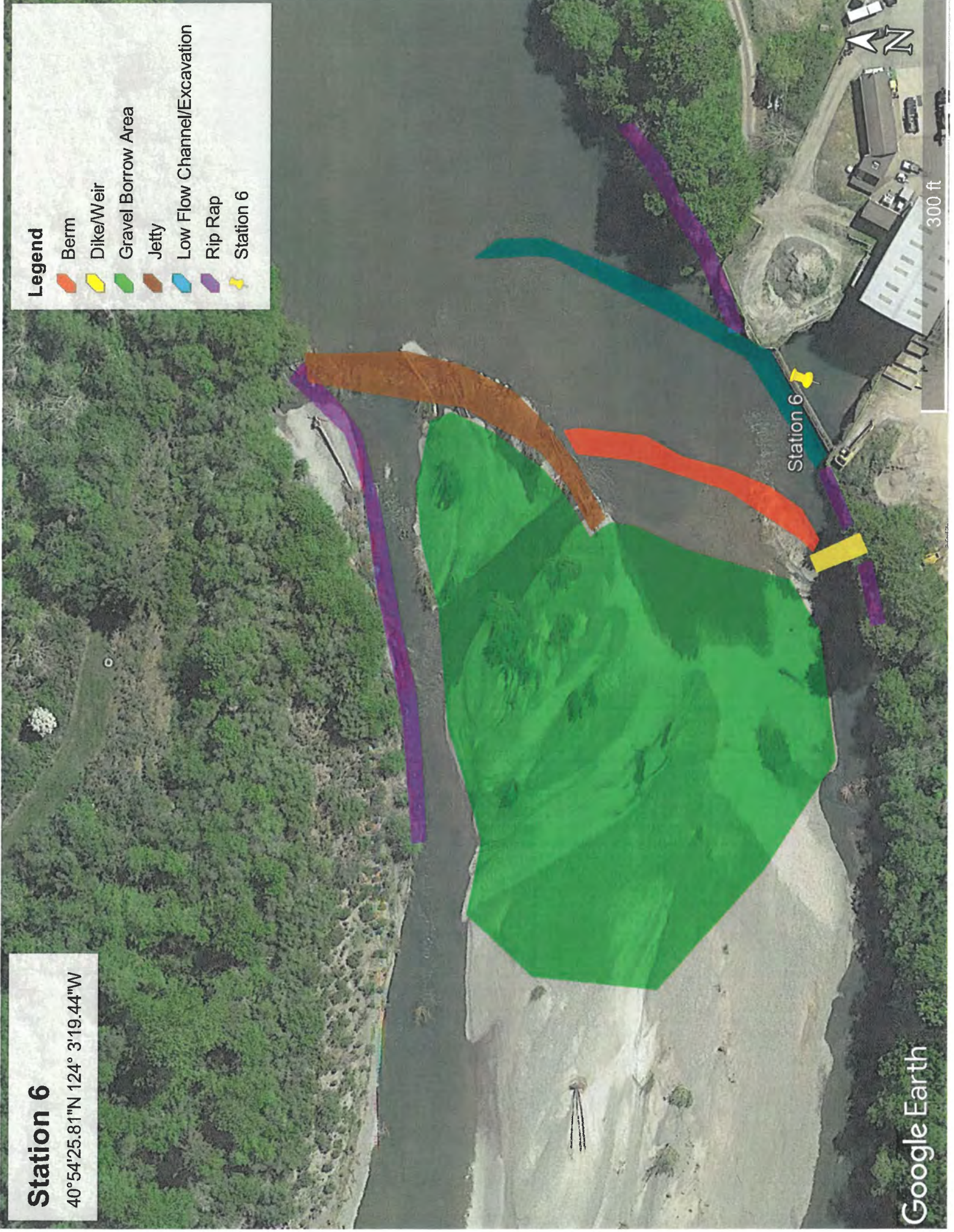
2000 ft

Station 6

40°54'25.81"N 124° 3'19.44"W

Legend

- Berm
- Dike/Weir
- Gravel Borrow Area
- Jetty
- Low Flow Channel/Excavation
- Rip Rap
- Station 6



300 ft

Collector 1

40°54'29.47"N 124° 3'13.28"W

Legend

- Access Pad
- Collector 1
- Rip Rap
- Rock Jetty

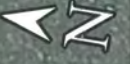


Collector 2

40°54'27.09"N 124° 2'53.30"W

Legend

- Access Pad
- Access Road
- Collector 2
- Rip Rap



100 ft



Collector 3

40°54'19.89"N 124° 2'32.69"W

Legend



Collector 3



Rip Rap

Collector 3

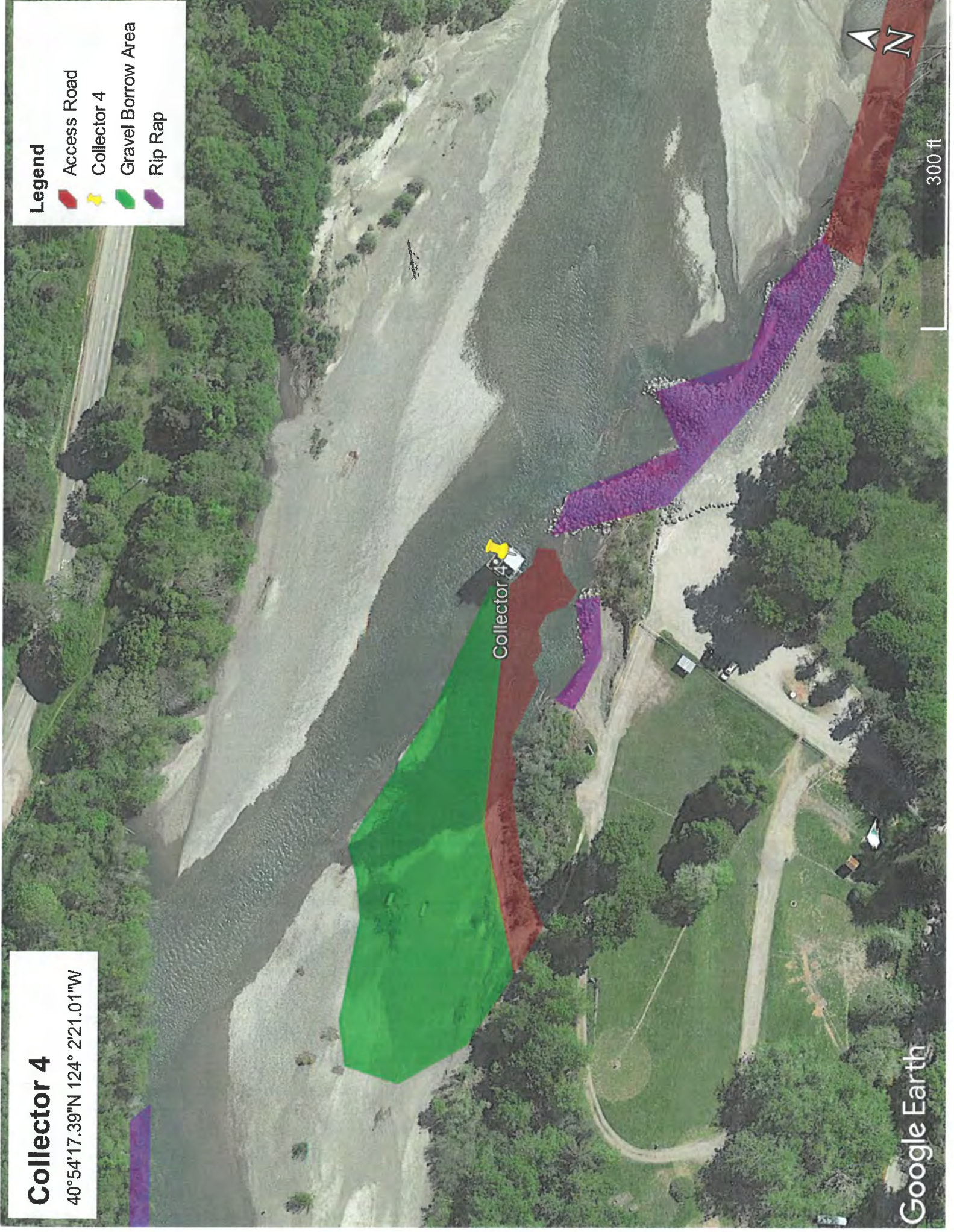


Collector 4

40°54'17.39"N 124° 2'21.01"W

Legend

- Access Road
- Collector 4
- Gravel Borrow Area
- Rip Rap



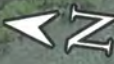
Collector 5

40°54'14.78"N 124° 2'5.60"W

Legend

- Access Road
- Collector
- Rip Rap

Collector 5

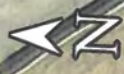


Ruth

40°22'11.15"N 123°26'4.41"W

Legend

- Excavation
- Rock Slope Protection



200 ft