

Figure 1-1. Stream Maintenance Program: Program Area

Lower Peninsula Watershed Channel Types

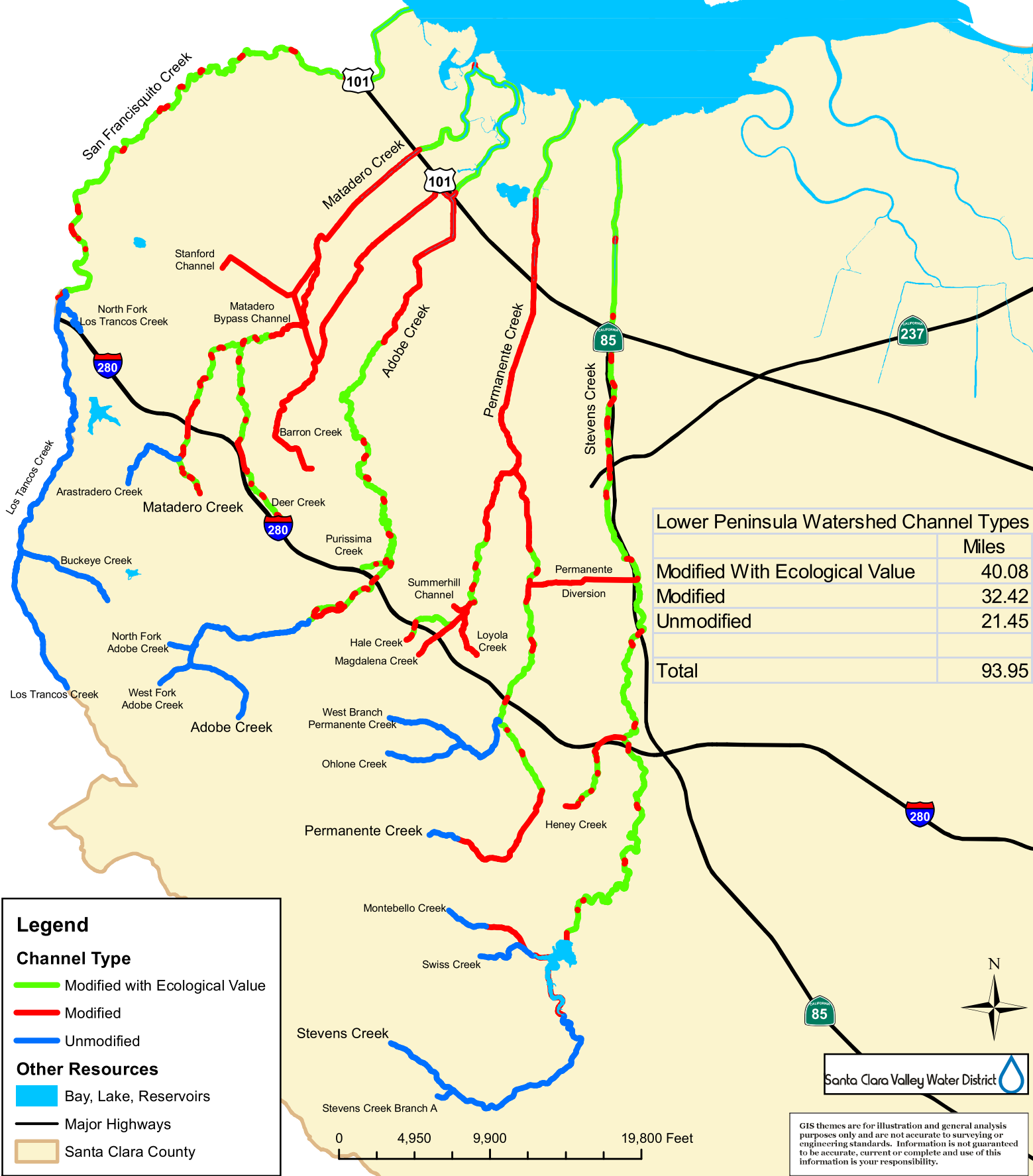
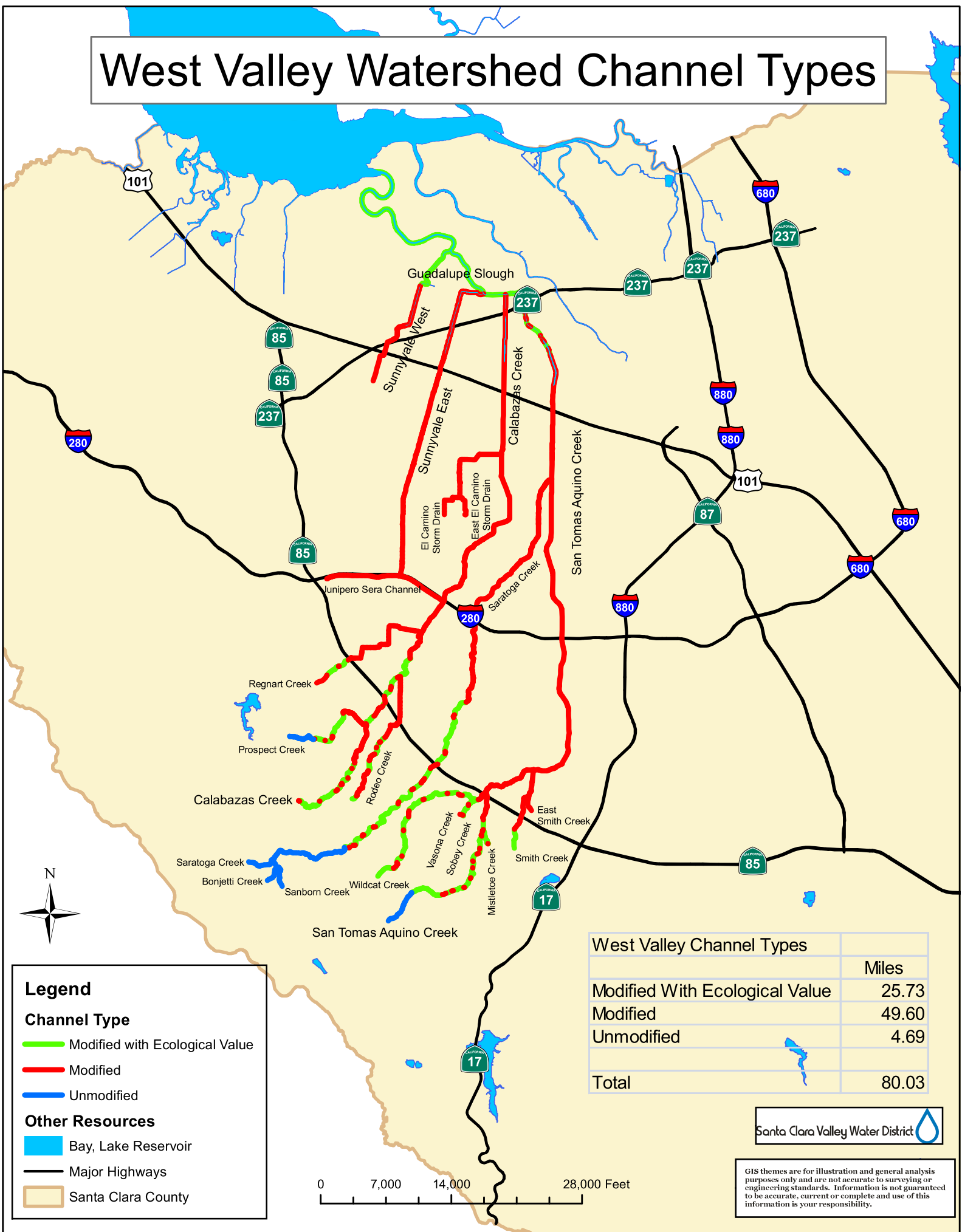


Figure 1-2. Lower Peninsula Watershed Channel Types

West Valley Watershed Channel Types



Legend

Channel Type

- Modified with Ecological Value
- Modified
- Unmodified

Other Resources

- Bay, Lake Reservoir
- Major Highways
- Santa Clara County

West Valley Channel Types	
	Miles
Modified With Ecological Value	25.73
Modified	49.60
Unmodified	4.69
Total	80.03

Santa Clara Valley Water District



GIS themes are for illustration and general analysis purposes only and are not accurate to surveying or engineering standards. Information is not guaranteed to be accurate, current or complete and use of this information is your responsibility.

Figure 1-3. West Valley Watershed Channel Types

Guadalupe Watershed Channel Types



Figure 1-4. Guadalupe Watershed Channel Types

Santa Clara Valley Water District

GIS themes are for illustration and general analysis purposes only and are not accurate to surveying or engineering standards. Information is not guaranteed to be accurate, current or complete and use of this information is your responsibility.

Coyote Watershed Channel Types

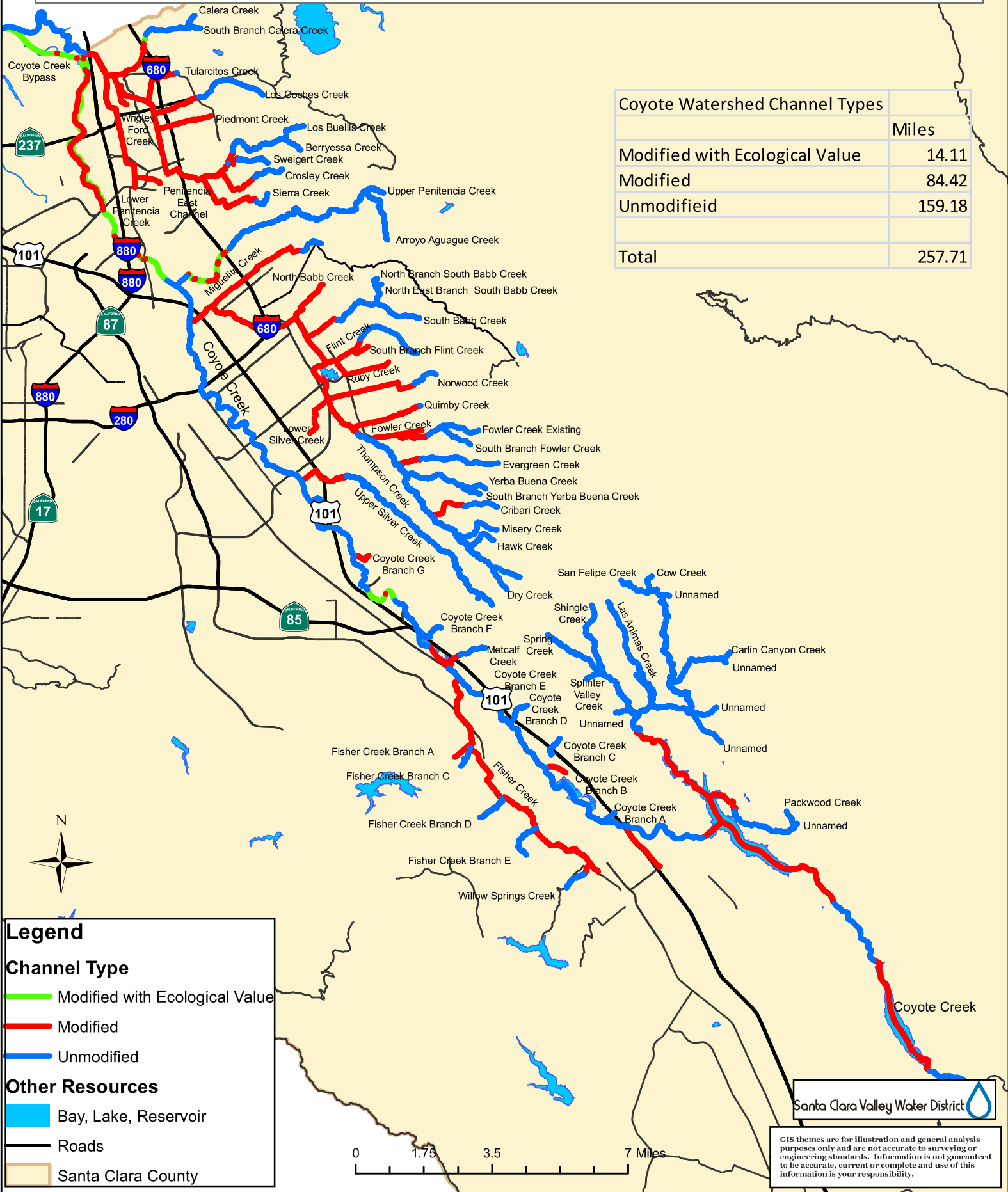


Figure 1-5. Coyote Watershed Channel Types

Pajaro Watershed Channel Types

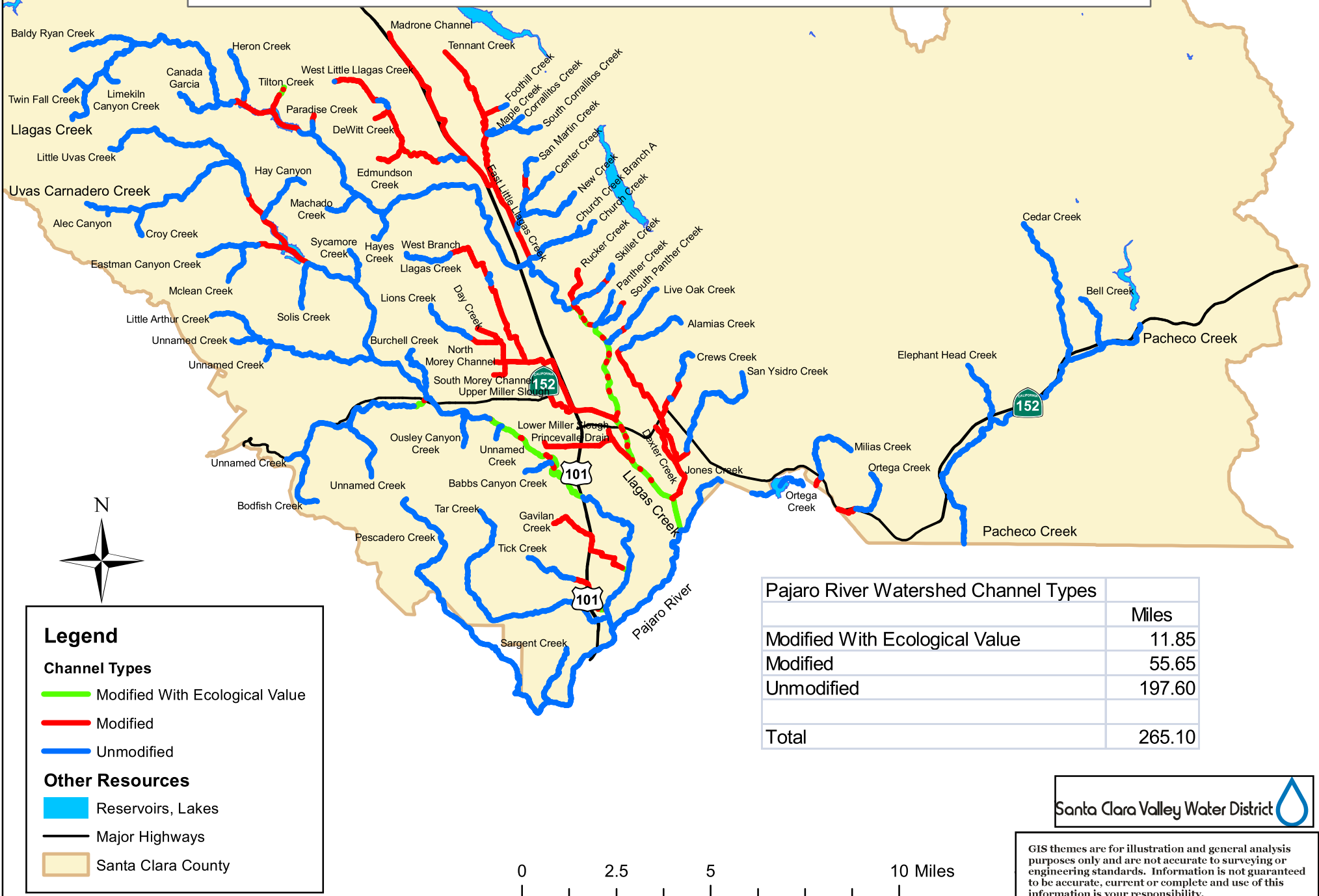



Figure 1-6. Pajaro Watershed Channel Types

Santa Clara Valley Water District 

GIS themes are for illustration and general analysis purposes only and are not accurate to surveying or engineering standards. Information is not guaranteed to be accurate, current or complete and use of this information is your responsibility.



Photo 1. Adobe Creek at Station 219+16.



Photo 2. Lions Creek at Station 10+50.



Photo 3. Matadero Creek at Station 121+08.



Photo 4. Ross Creek at Station 205+46.



Photo 5. San Tomas Creek at Station 174+17.



Photo 6. Sunnyvale East Channel at Station 156+28.

**Figure 1-7
Representative Modified Channels**



Photo 1. Adobe Creek at Station 257+05.



Photo 2. Coyote Creek at Station 1525+50.



Photo 3. Guadalupe River at Station 708+00.



Photo 4. San Francisquito Creek at Station 31+02.



Photo 5. Smith Creek at Station 71+25.



Photo 6. Uvas Creek at Station 461+40.

Figure 1-8
Representative Modified Channels with Ecological Value



Photo 1. San Tomas Creek at Station 820+00.



Photo 2. San Tomas Creek at Station 823+00.



Photo 3. Stevens Creek at Station 931+46.



Photo 4. Stevens Creek at Station 943+62.



Photo 5. Uvas Creek at Station 327+00.



Photo 6. Llagas Creek at Station 521+75.

Project 10.005_July2013

**Figure 1-9
Representative Unmodified Channels**