

Status of NAPR Cleanup Program Sites Under RCRA

The Resource Conservation and Recovery Act, commonly known as RCRA, was enacted by Congress in 1976 to address how to safely manage and dispose of municipal and industrial solid waste generated nationwide.

One of the key provisions of the law requires owners and operators of facilities covered by RCRA to cleanup contamination resulting from past practices. These cleanup activities are known as corrective actions.

The Navy is performing cleanup on the Former Naval Station Roosevelt Roads, now referred to as Naval Activity Puerto Rico (NAPR), in accordance with RCRA. Below is a description of each step in the RCRA corrective action process applicable to the various NAPR sites the Navy is cleaning up. The flow chart on the reverse side shows how NAPR sites are progressing in the cleanup process.

- RCRA Facility Assessment (RFA)** – Often the RFA is the first step in the corrective action process. The RFA compiles existing information on environmental conditions at a facility, including information on actual or potential releases.
- RCRA Facility Investigation (RFI)** – The RFI takes place when releases, or potential releases, have been identified and further investigation is necessary. The purpose of the RFI is to gather enough information to sufficiently characterize the nature and extent of contaminants to determine the appropriate response action. Risk assessments are also conducted as part of the RFI. The risk assessments estimate the risks to people’s health and the environment from potential exposure to the contaminants at a site.
- Corrective Measures Study (CMS)** – After the RFI is completed, if cleanup is necessary, the CMS identifies and evaluates cleanup approaches that may be selected.
- Statement of Basis** – After review of the CMS, a Statement of Basis is developed which describes the basis for corrective measure selection. Members of the public are provided with an opportunity to comment on the corrective measure.
- Corrective Measures Implementation (CMI)** – Once a corrective measure has been selected, the facility enters the CMI phase of corrective action. During the CMI, the owner/operator of the facility implements the chosen corrective measure. The CMI includes design, construction, operation, maintenance, and monitoring of the chosen corrective measure.
- Site Closure** – A Corrective Action Complete determination is issued when investigations are complete and contamination levels are reduced to applicable levels. Corrective Action Complete determinations may be made “with” or “without” controls in place. The approved controls may be engineered controls such as waste treatment or containment and/or administrative controls such as land or water use controls.

Status of NAPR Cleanup Program Sites Under RCRA

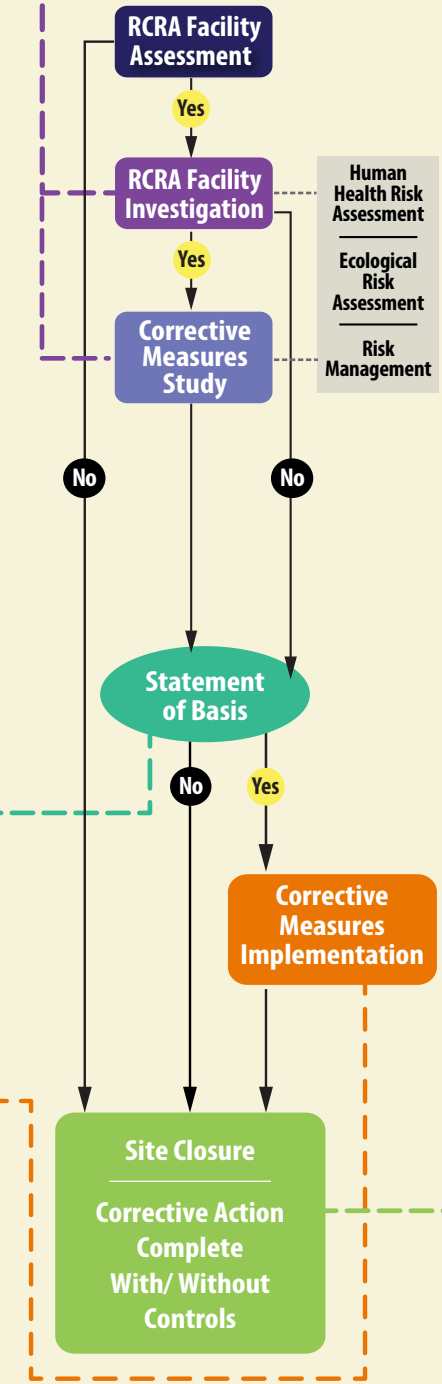
November 2023

RCRA Facility Investigation/Corrective Measures Study	
Site Name	Site Description
Property Owner: Navy	
SWMU 1 (UXO 2)	Former Army Cremator Disposal Site
SWMU 2	Former Langley Drive Disposal Site
SWMU 9	Tanks 212-217 Sludge Disposal Pits
SWMU 11	Building 38 Interior
AOC E	Offshore Islands Pineros and Cabeza de Perro
SWMU 45	Building 38 Exterior
SWMU 60	Former Landfill at the Marina
SWMU 61	Former Bundy Area Maintenance Facilities
SWMU 62	Former Bundy Disposal Area
SWMU 70	Disposal Area Northwest of Landfill
SWMU 71	Quarry Disposal Site
SWMU 74	Fuel Pipelines and Hydrant Pits
SWMU 77/ UXO 1	Small Arms Range (and former open burning/open detonation [OB/OD] areas located on peninsula on Punta Medio Mundo)
Property Owner: Other DOD	
SWMU 73	DRMO Scrap Metal Recycling Yard
SWMU 79	Cabras Island
Property Owner: PR Ports Authority	
SWMU 14	Fire Training Area
Property Owner: PR LRA	
UXO 3	PRIDCO Parcel

Statement of Basis	
Site Name	Site Description
Property Owner: Other DOD	
SWMU 76	Building 2300

Corrective Measures Implementation	
Site Name	Site Description
Property Owner: Navy	
SWMU 54	Building 1914, Former NEX Repair/Maintenance Shop
SWMU 59	Former Vehicle Maintenance and Refueling Area
AOC F	MNA Sites
Property Owner: PR LRA	
SWMU 7/8	Tow Way Fuel Farm
SWMU 55	TCE Groundwater Plume at Tow Way Fuel Farm

Site Closure	
Site Name	Site Description
Property Owner: PR LRA	
SWMU 3*	Base Landfill
SWMU 5	Miscellaneous Metal Dumpsters
SWMU 10*	Building 90/Substation 2
SWMU 13*	Old Pest Control Shop
SWMU 15	Former Hospital Incinerator
SWMU 16	Building 1666, Waste Explosives Storage Area
SWMU 17*	Building 1973 Hazardous Waste Container Storage Area
SWMU 18*	Building 2009, Hazardous Waste Container Storage Area
SWMU 19	Building 121 Pesticides Storage Area
SWMU 21	Floating Oil Spill Cleanup "Donuts"
SWMU 22	Ship Waste Offload Barges
SWMU 23*	Oil Spill Separator Tanks
SWMU 24	Oil Spill Oil/Water Separator
SWMU 25*	DRMO Storage Yard
SWMU 26	Building 544 Uncontrolled Storage Area
SWMU 27	Capehart Sewage Treatment Plant
SWMU 28	Bundy Wastewater Treatment Plant Sludge Drying Beds
SWMU 29	Industrial Area Wastewater Treatment Plant
SWMU 30*	Former Incinerator
SWMU 31/32*	Waste Oil Collection Area and Battery Collection Area
SWMU 36	Oil/Water Separator at Berthing Pier
SWMU 38	Sanitary and Storm Water Sewer Systems
SWMU 39*	Building 3158/Former Battery Drain Area
SWMU 40	Waste Oil Accumulation Tank at Alpha Company Maintenance Yard
SWMU 41	Building 3152 Pesticide Storage Area
SWMU 42*	Water Purification Plant Lagoons
SWMU 46*	Pole Storage Yard Covered Pad
SWMU 47	Miscellaneous "Satellite" Disposal Areas
SWMU 49	Waste Oil Accumulation Tank Near Building 3188
SWMU 50	Uncontrolled Storage Area Near Building 3166
SWMU 52	Building 3158 Waste Storage Pad
SWMU 53	Building 64 Malaria Control Building
SWMU 57	Facility No. 278 POL Drum Storage Area
SWMU 58	Rifle Range at Punta Puerca
SWMU 63	Former Pistol Range at BEQ
SWMU 67	Former Gas Station
SWMU 72	Building 31 Public Works Department
SWMU 75	Building 803
SWMU 78	Pole Yard
AOC A	Torpedo Shop
AOC C*	Discarded Transformer and Electrical Equipment and Accumulation Area
AOC D	Ensenada Honda Sediments
Property Owner: PR Ports Authority	
SWMU 4	Building 860 Oil/Water Separator
SWMU 12	Fire Training Area Oil/Water Separator
SWMU 20	Building 860 Waste Oil Storage Area
SWMU 33	Building 379 Waste Storage Area
SWMU 34	Waste Oil and Fuels Storage Area at Airfield
SWMU 35	Building 396 Oil/Water Separator
SWMU 37*	Building 200/Waste Oil Storage Area
SWMU 43	Building 860 Concrete Storm Water Drain
SWMU 44	Aerial Target Yard Storm Water Drainage Ditch
SWMU 51*	Building 379/New AIMD Storage Pad
SWMU 56	Hanger 200 Apron
SWMU 64	Former Skeet Range at Ofstie Field
SWMU 65	Former UST No. 208
SWMU 66	Former UST No. 289
SWMU 68	Former Southern Fire Training Area
SWMU 69	Aircraft Parking Area
SWMU 80	Drainage Ditch Near Building 207
Property Owner: Other DOD	
AOC B	Building 25
SWMU 6	Building 145
SWMU 48	Waste Oil Storage Rack Near Building 3102

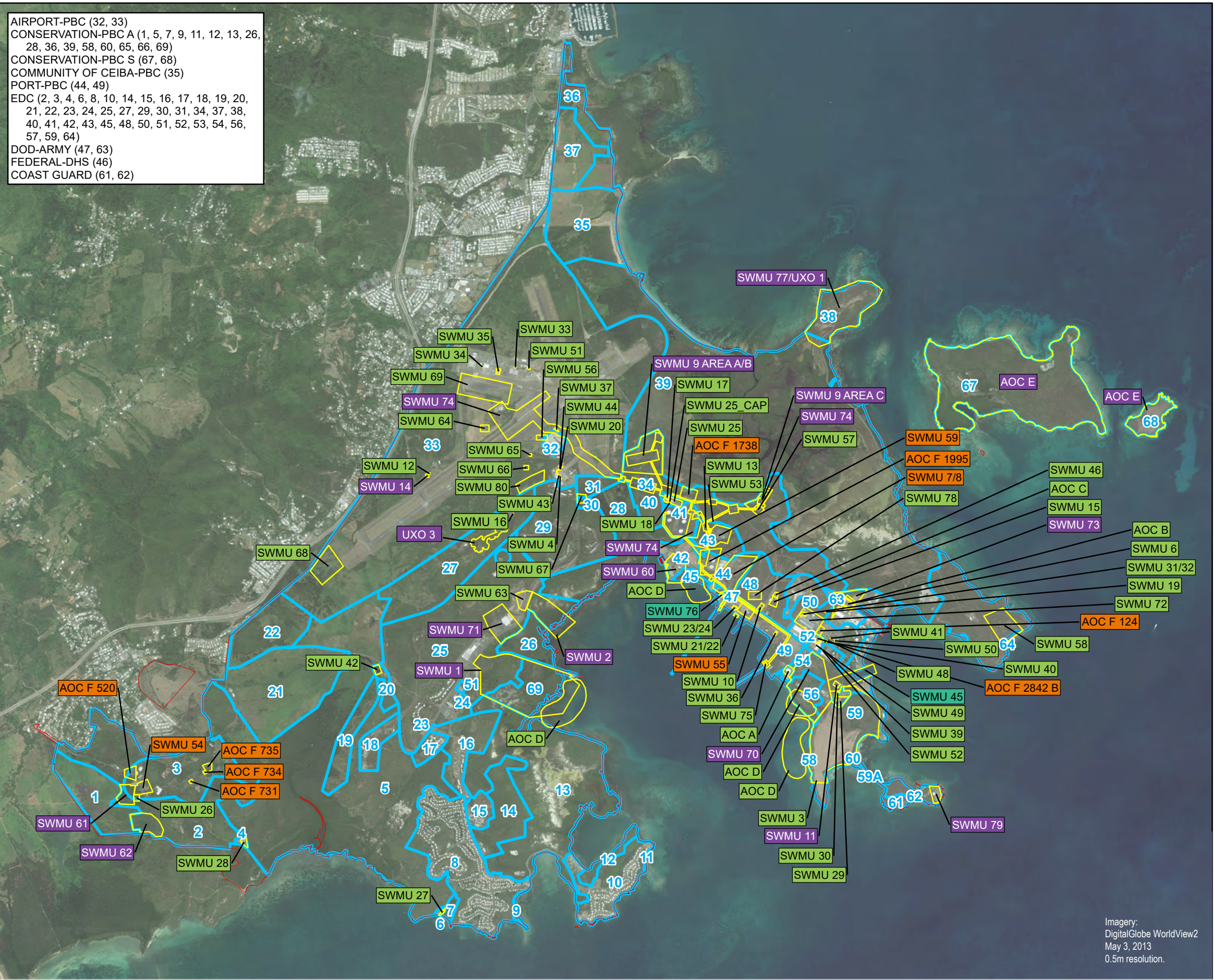


- No** No potential or actual release or no unacceptable risk identified.
- Yes** Potential or actual release and unacceptable risk identified.
- Land use control inspections are responsibility of the Navy; all other PR officials inspect and report.
- * Site has corrective action complete with controls.

Acronyms:
DOD = Department of Defense
PR LRA = Puerto Rico Local Redevelopment Authority

Status of NAPR Cleanup Program Sites Under RCRA

- AIRPORT-PBC (32, 33)
- CONSERVATION-PBC A (1, 5, 7, 9, 11, 12, 13, 26, 28, 36, 39, 58, 60, 65, 66, 69)
- CONSERVATION-PBC S (67, 68)
- COMMUNITY OF CEIBA-PBC (35)
- PORT-PBC (44, 49)
- EDC (2, 3, 4, 6, 8, 10, 14, 15, 16, 17, 18, 19, 20, 21, 22, 23, 24, 25, 27, 29, 30, 31, 34, 37, 38, 40, 41, 42, 43, 45, 48, 50, 51, 52, 53, 54, 56, 57, 59, 64)
- DOD-ARMY (47, 63)
- FEDERAL-DHS (46)
- COAST GUARD (61, 62)



- LEGEND
- AOC/SWMU Boundary
 - Parcel Boundary
 - Boundary Naval Activity Puerto Rico
 - Site Closure
 - Corrective Measures Implementation
 - RCRA Facility Investigation/Corrective Measures Study
 - Statement of Basis

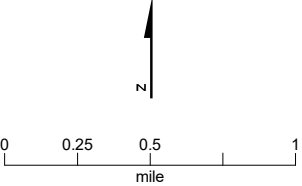


FIGURE 1
AOC, SWMU, and Parcel Boundaries
Naval Activity Puerto Rico
(Former Roosevelt Roads Facility)
Ceiba, Puerto Rico

Imagery:
 DigitalGlobe WorldView2
 May 3, 2013
 0.5m resolution.