

B.A. Steinhagen Lake and Town Bluff Dam Draft Master Plan Public Involvement Presentation

B.A. STEINHAGEN LAKE AND TOWN BLUFF DAM MASTER PLAN REVISION

PUBLIC INVOLVEMENT PRESENTATION

U.S. Army Corps of Engineers, Fort Worth District
Regional Planning and Environmental Center
“Cornerstone of the Southwest”

Hello, my name is **Floyd Boyett**, and I am the Lake Manager for **B.A. Steinhagen Lake and Town Bluff Dam**, known collectively as **Town Bluff Project**.

[Introduce other Corps members in attendance as a group]

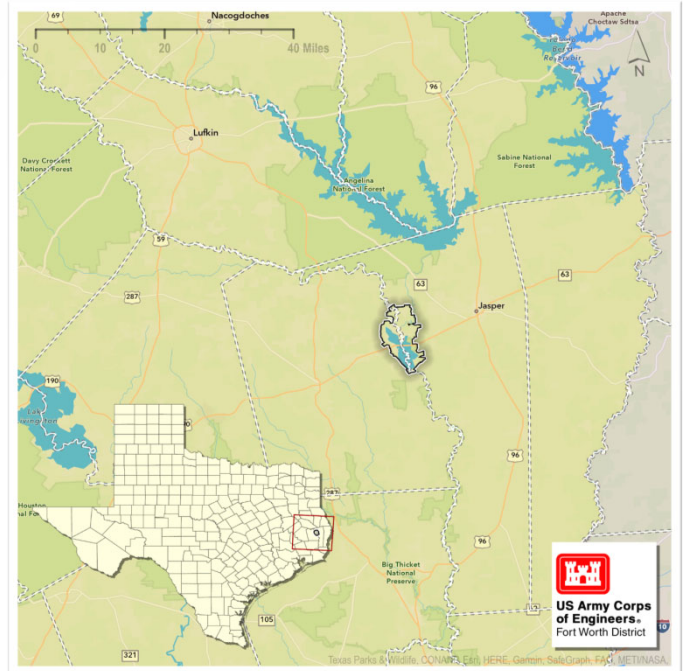
On behalf of the US Army Corps of Engineers, we would like to welcome you to the Public Involvement Presentation for the master plan at **Town Bluff Project**. Public and stakeholder involvement is critical to the success of master plan revisions. Thank you for taking the time to attend this meeting.

B.A. Steinhagen Lake and Town Bluff Dam Draft Master Plan Public Involvement Presentation



PURPOSE OF THE PRESENTATION

- **Announce the availability of the draft** B.A. Steinhagen Lake and Town Bluff Dam (collectively called Town Bluff Project) Master Plan and Environmental Assessment
- **Highlight proposed changes** in the revised Master Plan
- **Provide instructions** on how to participate in the revision process
- **Encourage participation**
- *Provide links* to documents



The purpose of this presentation is to inform the public and stakeholders that a draft revised master plan for **Town Bluff Project** is available. This presentation will define a master plan, describe the master plan revision process, highlight proposed changes to the **Town Bluff Project** Master Plan, provide instructions on how to participate in the process, and encourage participation. It will also provide links to documents and details about how to contact the Corps to ask questions.

The information provided through public and stakeholder comments is essential to the decision-making process of how project lands and water surfaces will be classified and managed. The Corps wants your ideas and comments. After watching this presentation, review the other material on the project website and send in comments and participate in planning the future of **Town Bluff Project**.

B.A. Steinhagen Lake and Town Bluff Dam Draft Master Plan Public Involvement Presentation



U.S. ARMY
US Army Corps
of Engineers.

PRESENTATION TOPICS

3

What is a Master Plan?

What is the revision process?

What is changing or proposed in the Master Plan revision?

What about NEPA compliance?

How can I participate?

Who can I talk to about the plan?

When will the Master Plan be completed?



Topics to be covered in this presentation are summed up under these questions that are often asked in a public meeting or workshop:

- What is a Master Plan?
- What is the revision process?
- What is changing or proposed in the master plan revision at this time?
- What about NEPA compliance?
- How can I participate?
- Who can I talk to about the plan?
- When will the Plans be done?

Under each of these topics, this presentation will provide details to help you better understand the revisions and your role in the process.



WHAT IS A MASTER PLAN (MP)?

4



- The Master Plan (MP) is a **25-year comprehensive land use management guide** for recreational, natural, and cultural resources
- **Adheres to Federal laws** to preserve, conserve, restore, maintain, manage, and develop project lands, waters, and associated resources, including the National Environmental Policy Act (NEPA) for environmental stewardship and outdoor recreation
- Provides **land classifications** and **resource management objectives** that are broad and adaptive over time
- Requires and encourages **public involvement**

See Engineering Regulation (ER) and Engineering Pamphlet (EP) 1130-2-550 for regulations and policy guidance related to the MP

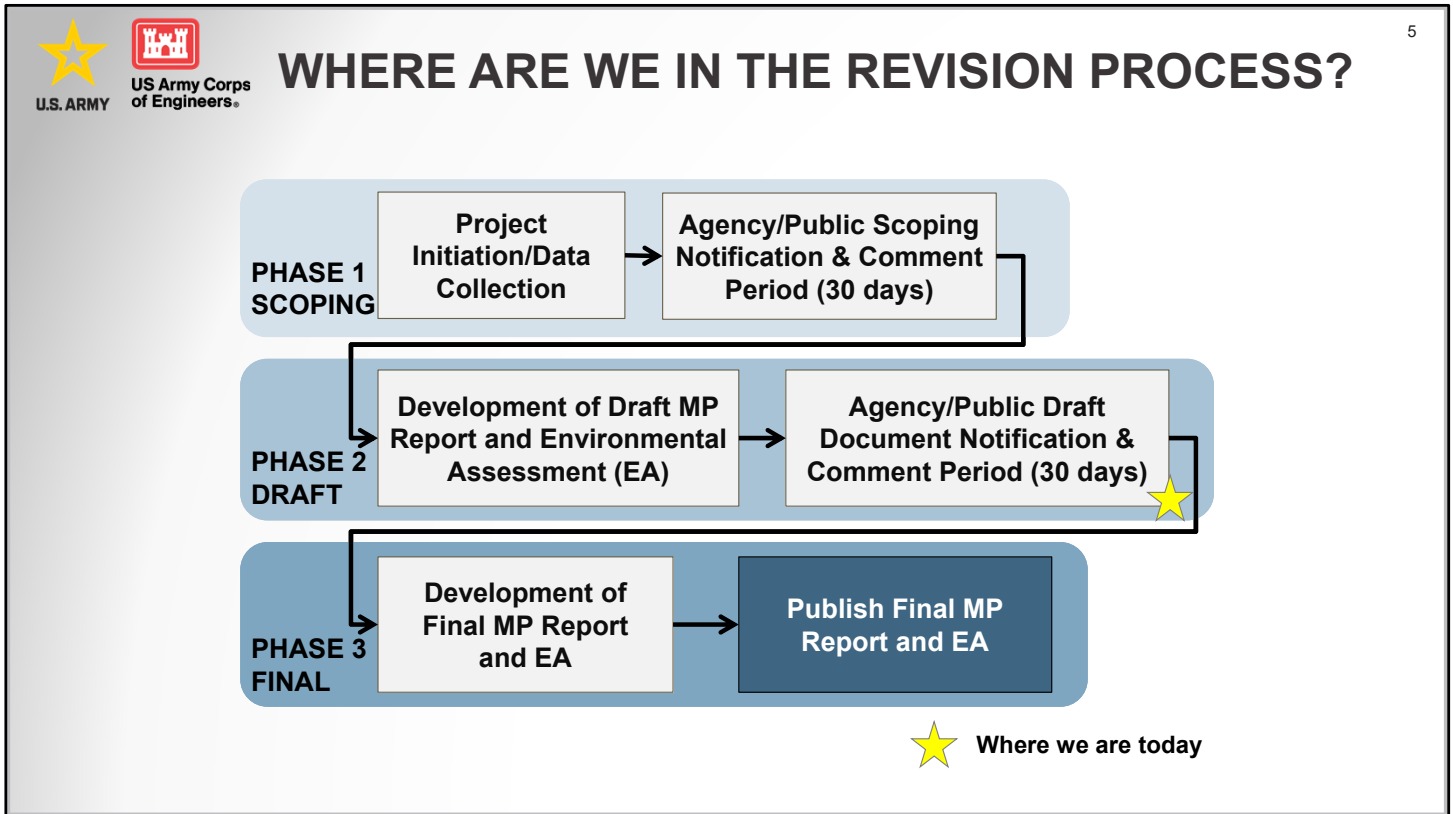
What is a Master Plan?

The Corps defines a Master Plan as... “The strategic land use management document that guides the comprehensive management and development of all project recreational, natural and cultural resources throughout the life of the water resource development project.”

The master plan is the document that will guide the land use and management of the project for the next 25 years, while adhering to all applicable Federal laws including the National Environmental Policy Act, or NEPA. The focus of the plan is the designation of land classifications with corresponding management plans, as well as establishing resource management objectives. ***The previous Master Plan was from 1971 with a Supplement in 2003.***

The key to a successful master plan is public involvement, which you can help by providing written comments!

B.A. Steinhagen Lake and Town Bluff Dam Draft Master Plan Public Involvement Presentation



The revision process includes 3 phases: (scoping, draft and final)

- The **scoping phase** is when the federal agency asks for initial input from other agencies, citizens and organizations regarding project area, resources and uses. This phase includes the initial public meeting that was held **September 15th** of last year and concluded at the end of the 30-day comment period.
- The **draft phase** is when USACE considers public comments on the proposed recommendations in the draft master plan. This is the phase we are currently in, as noted by the yellow star on the chart. After completing the 30-day comment period we will begin the **final phase**.
- The **final phase** is when USACE incorporates public comments from the draft review into a final master plan.
- The plan is published after formal approval by the District Commander.

B.A. Steinhagen Lake and Town Bluff Dam Draft Master Plan Public Involvement Presentation



WHAT IS THE REVISION PROCESS? LAND CLASSIFICATIONS

Source: Engineering Pamphlet (EP) 1130-2-550

Land Classification	Definition
Project Operations	Lands required for the dam, spillway, levees, office, maintenance facilities and other areas that are used solely for project operations.
High Density Recreation	Land developed for intensive recreational activities for the visiting public, including day use areas and campground areas for commercial concessions, and quasi-public development.
Multiple Resource Management Lands	Low Density Recreation: Lands with minimal development or infrastructure that support passive public recreational use (e.g., trails, primitive camping, wildlife observation, fishing and hunting).
	Wildlife Management: Lands designated for the stewardship of fish and wildlife resources.
	Vegetative Management: Lands designated for the stewardship of forest, prairie, and other native vegetative cover.
	Inactive and/or Future Recreation Areas: Recreation areas planned for the future or that have been temporarily closed.
Environmentally Sensitive Areas	Areas where scientific, ecological, cultural or aesthetic features have been identified. These areas must be considered by management to ensure they are not adversely impacted.
Mitigation	Lands acquired or designated specifically for offsetting losses associated with development of the project. Lands allocated as separable mitigation lands can only be given this classification.

The Corps defines land classification as the primary use for which project lands are managed. All Federally owned lands are zoned for development and resource management consistent with project purposes.

Utilizing the current Federal guidance, the land classifications are defined as shown in this table.

The **Project Operations** classification is used solely for lands dedicated for the operation of the project, including the dam, spillway, levees, project office, and other operational features.

The classification **High Density Recreation** is assigned to lands that are being used for intensive recreational activities, including day use and campground areas.

The **Multiple Resource Management Lands** allows for the designation of a predominate use and are subdivided into 4 classifications. All 4 classifications essentially allow for similar activities to occur, but are managed with a particular emphasis, including **low density recreation, wildlife management, vegetative management,** and **inactive or future recreation** areas.

The protection of **Environmentally Sensitive Areas** is given priority, and are for lands with unique scientific, ecological, cultural, or aesthetic features. Examples include endangered species habitat, scenic shorelines, and rare and unique plant communities to mention a few.

The **Mitigation** classification is reserved for lands acquired or designated for offsetting losses associated with the development of the project.



WHAT IS THE REVISION PROCESS?

WATER SURFACE CLASSIFICATIONS

Source: Engineering Pamphlet (EP) 1130-2-550

Water Surface Classification	Definition
Open Recreation	Those waters available for year-round or seasonal water-based recreational use.
Restricted	Water areas restricted for project operations, safety, and security purposes.
Designated No-Wake	To protect environmentally sensitive shoreline areas, recreational water access areas from disturbance, and for public safety.
Fish and Wildlife Sanctuary	Annual or seasonal restrictions on areas to protect fish and wildlife species during periods of migration, resting, feeding, nesting, and/or spawning.

Water surface classifications are defined much like land classifications in that they reflect how the water surface is to be managed.

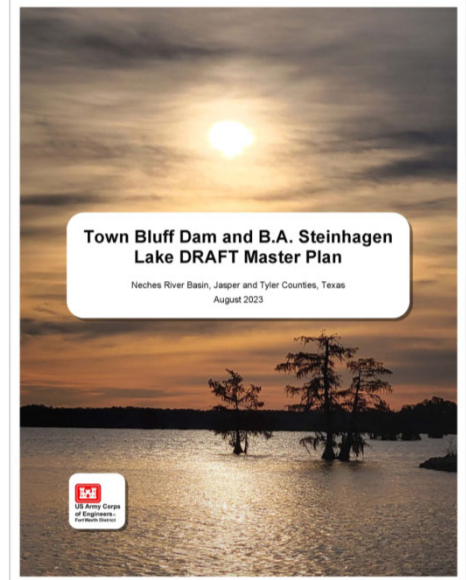
The water surface will be reviewed and classified using 4 classifications. The dominate classification is typically **open recreation** which allows year-round use of the water surface. The other 3 classifications place restrictions on the water surface based on safety, access, shoreline protection, and wildlife needs. **Restricted** water surfaces do not allow access due to safety and security purposes. **No-wake** water surfaces limit vessel speeds to protect shorelines from wake damage and are used near marina and boat ramps for public safety. **Fish and wildlife sanctuary** water surfaces can be employed on an annual or seasonal basis to restrict access to protect fish and wildlife species.

B.A. Steinhagen Lake and Town Bluff Dam Draft Master Plan Public Involvement Presentation



WHAT IS CHANGING OR PROPOSED IN THE MP?⁸ *KEY CHANGES*

- The Draft Master Plan **changed the land and water surface classification** at various locations.
- **Environmentally Sensitive Areas** (ESA) were designated to protect unique and sensitive areas.
- New **goals and objectives** were defined in Chapter 3 of the draft Master Plan.
- A new **resource plan** for each land and water surface classification was developed in Chapter 5 of the Master Plan.
- **New Maps** in Appendix A showing land and water surface classifications and other important maps.



The following are proposed changes in the draft 2023 master plan:

- New land and water surface classifications including
- Environmentally Sensitive Areas
- NOTE: No new Utility Corridors were designated due to lack of demand
- New goals and objectives
- New resource plan
- New maps

B.A. Steinhagen Lake and Town Bluff Dam Draft Master Plan Public Involvement Presentation



WHAT IS CHANGING OR PROPOSED IN THE MP?⁹ **PROPOSED LAND AND WATER SURFACE CHANGES**


Proposed Land and Water Surface Changes between the 1971 Master Plan and 2003 Supplement and the 2023 Revised Draft Master Plan

Prior Land Classifications (2003)	Acres*	Proposed Land Classifications (2023)	Acres
Project Operations (Class 1 Land)	101	Project Operations (PO)	127
Intensive Recreation with Wildlife and Vegetative Management (Class 2)	2,291	High Density Recreation (HDR)	2,012
Environment Sensitive Area (Class 4)	3,390	Environmentally Sensitive Areas (ESA)	5,456
Multiple Resource Management (Class 5)	2,564	MRML – Low Density Recreation (LDR)	6,915
		MRML – Wildlife Management (WM)	49
Prior Water Surface Classifications (2003)	Acres*	Proposed Water Surface Classifications (2023)	Acres
Water Surface (Class 1 Lake)	6,856	Permanent (Conservation) Pool	6,865
–	–	– Restricted	7
–	–	– Designated No Wake	114
–	–	– Open Recreation	6,744

** Total Acreage differences from the 2003 Master Plan and the calculated total are due to improvements in measurement technology, deposition/siltation, and erosion. Totals also differ due to rounding while adding parcels.*

This table compares the land and water surface changes between the 1971 Master Plan with 2003 Supplement and the 2023 Revised Draft Master Plan. Please note the details within the Master Plan describing variables, factors, and justification that led to some of the changes.

B.A. Steinhagen Lake and Town Bluff Dam Draft Master Plan Public Involvement Presentation

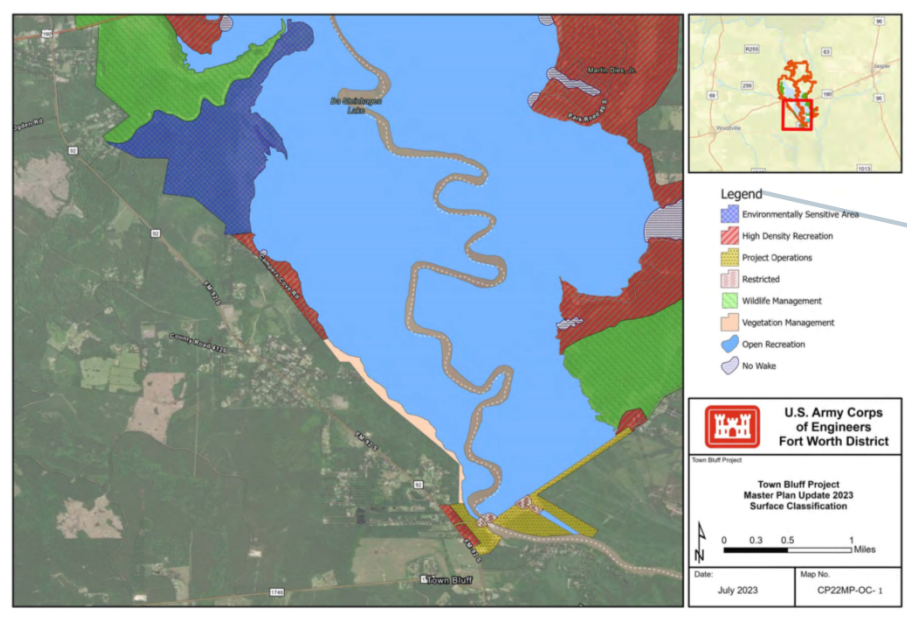


U.S. ARMY
US Army Corps of Engineers

WHAT IS CHANGING OR PROPOSED IN THE MP?⁰

PROPOSED LAND AND WATER SURFACE CHANGES

See **Appendix A** for detailed maps showing the proposed land classifications



Legend

- Environmentally Sensitive Area
- High Density Recreation
- Project Operations
- Restricted
- Wildlife Management
- Vegetation Management
- Open Recreation
- No Wake

U.S. Army Corps of Engineers
Fort Worth District

Town Bluff Project

Town Bluff Project
Master Plan Update 2023
Surface Classification

0 0.3 0.5 1 Miles

Date: July 2023 Map No. CP22MP-OC-1

Legend

- Environmentally Sensitive Area
- High Density Recreation
- Project Operations
- Restricted
- Wildlife Management
- Vegetation Management
- Open Recreation
- No Wake

See **Appendix A** for detailed maps with proposed changes in the Master Plan. Here's an example from the maps in Appendix A.



U.S. ARMY

US Army Corps
of Engineers

WHAT ABOUT NEPA COMPLIANCE? THE ENVIRONMENTAL ASSESSMENT

11

National Environmental Policy Act (NEPA)

Purpose of NEPA is to:

- Ensure federal agencies give proper **consideration to the environmental and cultural resources** prior to undertaking a federal action
- **Involve the Public** and stakeholders in the decision-making process
- **Document the process** by which agencies make informed decisions

- NEPA Scoping Process:
 - Opportunity for **public comments and questions** on the potential impacts of proposed federal actions
 - Includes comments from other federal, state, and local governments, and Tribal Nations

NEPA is the National Environmental Policy Act.

Compliance with NEPA is required during the master plan revision process. NEPA is required so that federal agencies give proper consideration to the environment prior to undertaking a federal action. Scoping during NEPA involves the public in the decision-making process, while documenting the process by which federal agencies make informed decision.

The NEPA process provides the public with the opportunity to ask questions and comment on the potential impacts of proposed federal actions. It also includes comments from other federal, state and local governments, and Tribal Nations.



U.S. ARMY



US Army Corps
of Engineers

HOW CAN I PARTICIPATE?

12

Submit written comments!

Review all documents available on the USACE website:

<https://www.swf.usace.army.mil/About/Lakes-and-Recreation-Information/Master-Plan-Updates/Town-Bluff/>

Documents available on the website include:

- Previous Master Plan documents
- Draft Revised Master Plan, Maps, and EA
- Comment form
- Presentation

Spread the word by telling your colleagues, friends and neighbors to participate

You can participate in the process by reviewing the documents available on the website and submit written comments. **The Corps will only accept comments in written format.** The project website is hosting all the documents relevant to the master plan revision, including the current master plan documents, project maps, comment forms with instructions on how to submit a comment, and copies of this presentation for your review. As the project progresses, and new information is developed, it will be posted to this project website, so you may want to bookmark the site for future reference.

We are asking for your help to spread the word to others, letting them know the master plan revision has been initiated, and this is the opportunity to participate in the process.



U.S. ARMY



US Army Corps
of Engineers

HOW CAN I PARTICIPATE?

13

Comments will be accepted **only in writing**, some of the methods for submitting a comment include:

- You may **download the comment form** provided on the website, fill it out electronically, and email it to the Corps
- Or you may **print the comment form** provided on the website, fill it out by hand, and mail it to the Corps at the address on the comment form
- Or you may **write a comment or send an email without using the comment form**, and mail or email it to the Corps at the address provided on the website
- **Comments are due** by close of business on **September 30, 2023**

- **The Corps can accept any form of written comments and we have provided a few methods that may make it easier to submit.**
- You can use one of the comment forms provided at the public meeting and hand it to a Corps representative, mail it to the address on the form, or email it to address provided.
- A comment form is available on the website which you can download and fill out electronically and email to the email address provided.
- Another method is to print the comment form provided on the website and fill it out by hand, or electronically, and mail it into the Corps.
- Or you can write a comment in a letter, or email, and send it in. You don't have to use the comment form.
- We will except all of these methods, and any other, as long as it's a written comment.
- The comment period is open for 30 calendar days from the initial announcement.

B.A. Steinhagen Lake and Town Bluff Dam Draft Master Plan Public Involvement Presentation

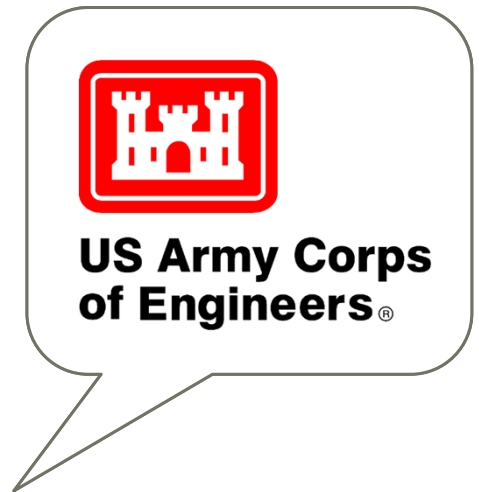


WHO CAN I TALK TO ABOUT THE PLAN?

14

Talk to **anyone from the USACE at the meeting** to answer your questions.

- **Call** the Town Bluff Project Office at: (409) 429-3491
- **Visit** the Town Bluff Project Office at:
5171 FM 92 South
Woodville, Texas 75979
- **Email** us your questions or comments at:
TBPO@usace.army.mil



If you have questions regarding the master plan, please call or email the following Corps project office or district staff.

You can also send questions to the Email address setup for this project as listed on this slide.

If you need to review a printed copy of the information, please contact the lake office to make your request.



WHEN WILL THE FINAL MASTER PLAN BE COMPLETED?

- The Master Plan typically take **18-24 months** to complete
- Projected milestones/schedule

Milestones	Schedule
Public Notification for Scoping	15 September 2022
Public Comment Period (30 days)	16 Sep – 16 Oct 2022
Draft Master Plan/EA Public Notification	29 August 2023
Public Comment Period (30 days)	30 August 2023
Final Master Plan/EA Approved	April 2024 (projected)

The master plan typically takes 18-24 months to complete.

Public notification for scoping initiated back in September of 2022.

The draft document is now available for public review and a public comment period is open until September 30th 2023

The final approved plans and EA is scheduled for April 2023.

B.A. Steinhagen Lake and Town Bluff Dam Draft Master Plan Public Involvement Presentation



THANK YOU!

16

Thank you for viewing this presentation and participating in the master plan revision process for Town Bluff Project.

Website address:

<https://www.swf.usace.army.mil/About/Lakes-and-Recreation-Information/Master-Plan-Updates/Town-Bluff/>

Email:

TBPO@usace.army.mil

Mail:

*U.S. Army Corps of Engineers
Town Bluff Project Office,
Attn: Lake Manager
5171 FM 92 South
Woodville, Texas 75979*



Thank you for viewing this presentation and participating in the master plan and shoreline management plan revision process **Town Bluff Project**.

Project documents are available at this website.

Please send your comments to the Email address, **Town Bluff Project Office** Address listed here.

If you have any questions about the MP that weren't addressed in this presentation, please feel free to ask one of the Corps employees at the meeting tonight, and we'll direct you to the right person to answer your questions.

Thank you!