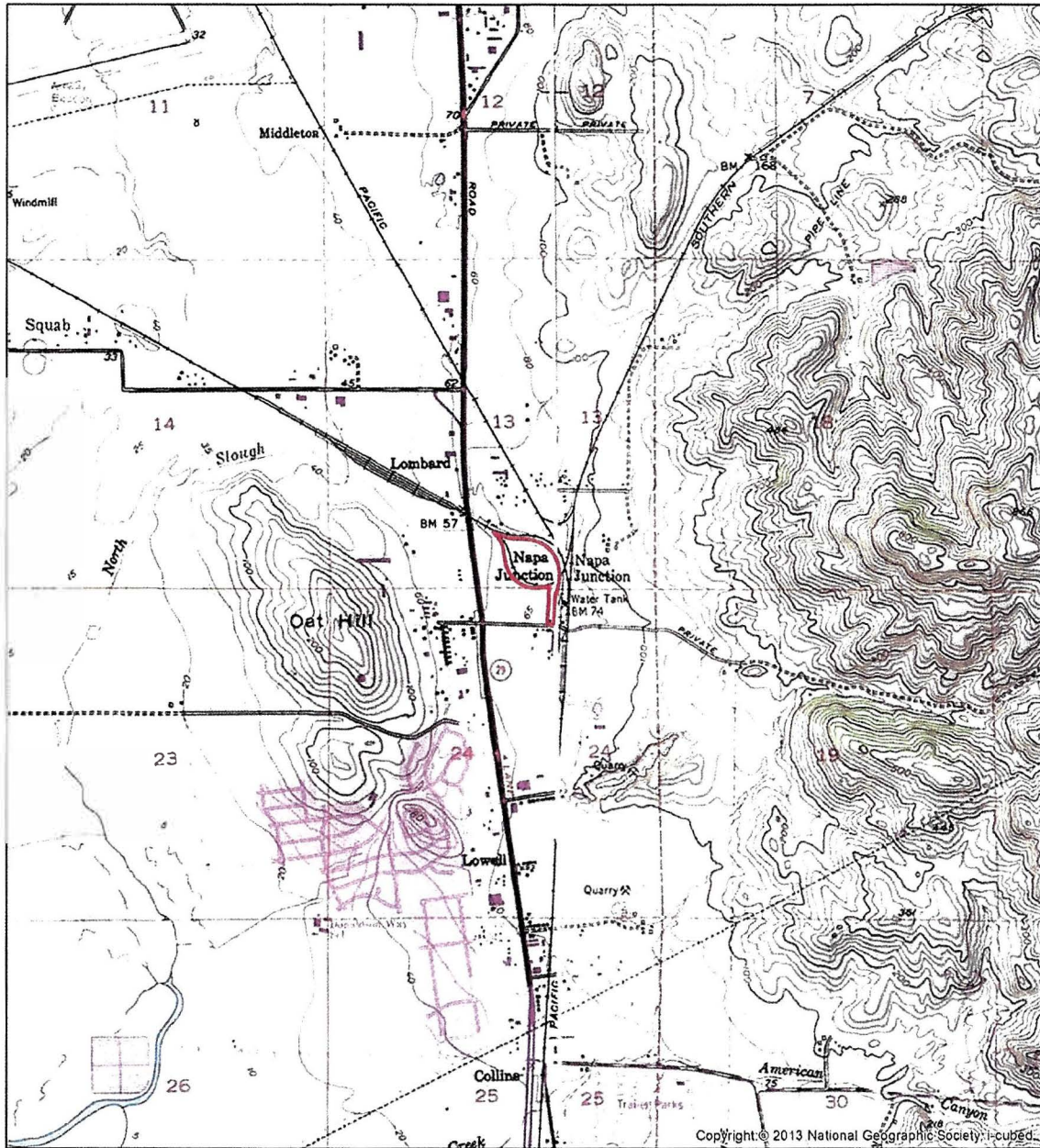


Figure 2: Project vicinity map.



<p>Napa County</p> <p>EVANS & DE SHAZO ARCHAEOLOGICAL HISTORICAL RECOVERY ACTION</p> <p>Map by S. Evans, 1/4/2022</p>	<p>Residences at Napa Junction East Napa Junction Road American Canyon, Napa County, California (APN 059-020-037-000)</p> <p>Legend</p> <p> Project Area</p>	<p>0 0.5 1 Miles</p> <p> 1:24,000</p> <p>USGS 7.5' Cuttings Wharf (1981), Calif. Quadrangle Township 4 North Range 4 West Section 13 NAD 83 UTM Zone 10N</p>
--	--	--

Figure 3: Project location shown on the USGS 7.5' Cuttings Wharf, Calif. Quadrangle (1981).

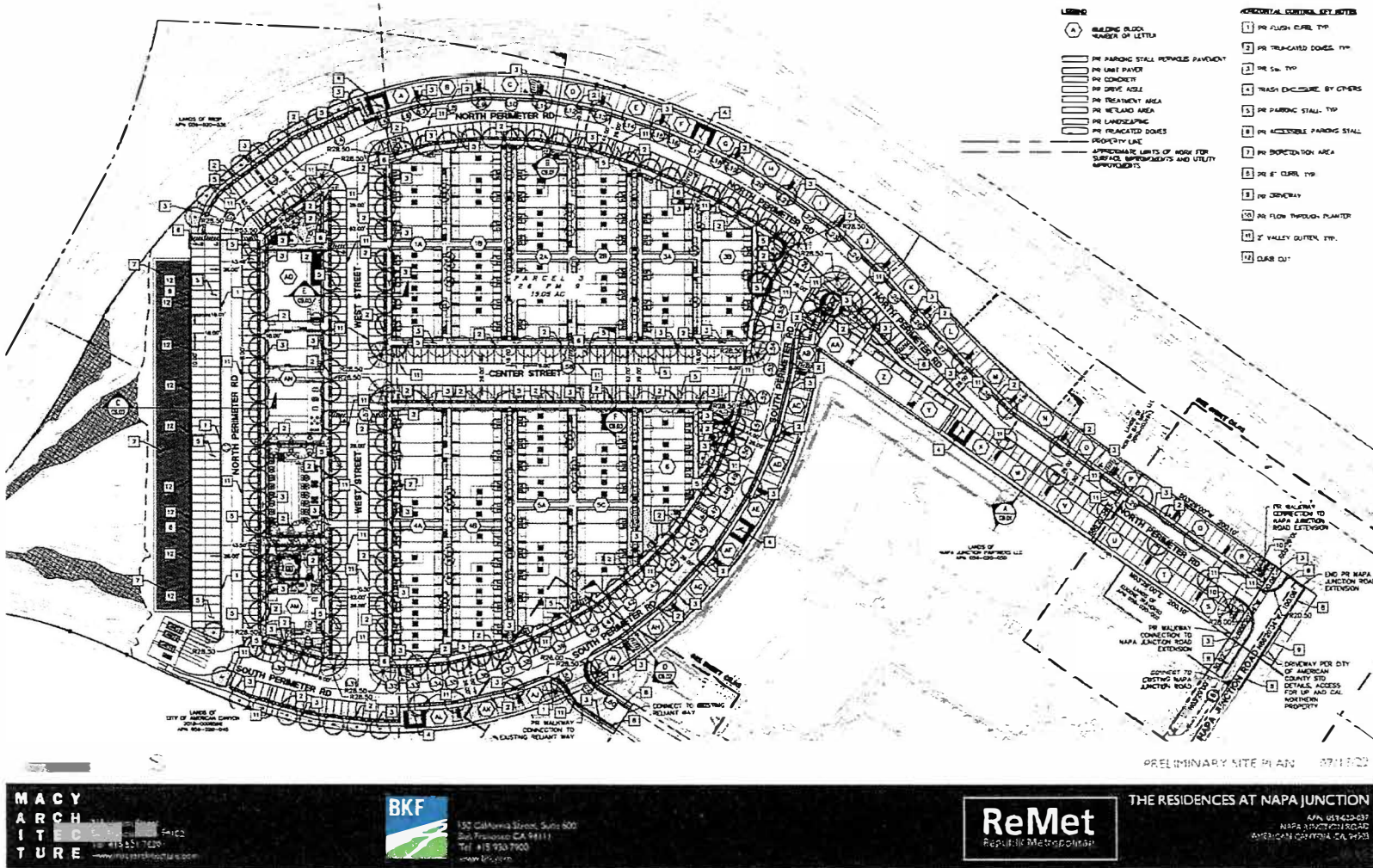


Figure 1: Preliminary Site Plan, dated 7/13/2022 (Macy Architecture).