







NO OBJECTION
TO PUBLICATION
Office of Public Relations
Navy Department
..... Authority #3



#3

NO OBJECTION
TO PUBLICATION
Office of Public Relations
Navy Department
..... Authority #3

Men on after sun deck



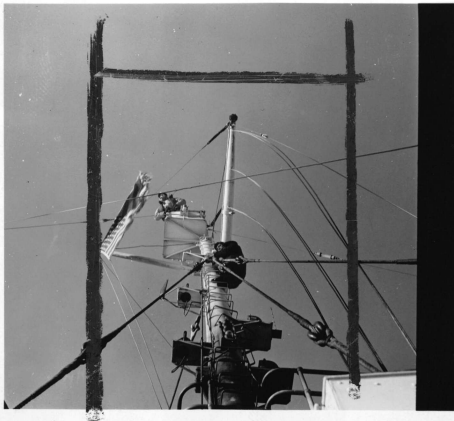
NO OBJECTION
TO PUBLICATION
Office of Public Relations
Navy Department
..... Authority #3



2# 1102

NO OBJECTION
TO PUBLICATION
Office of Public Relations
Navy Department
..... Authority #3

3



NO OBJECTION
TO PUBLICATION
Office of Public Relations
Navy Department
..... Authority #3

Roll #2 Masthead lookout
being relieved



NO OBJECTION
TO PUBLICATION
Office of Public Relations
Navy Department
..... Authority #3

NO OBJECTION
TO PUBLICATION
Office of Public Relations
Navy Department
..... Authority #3



NO OBJECTION
TO PUBLICATION
Office of Public Relations
Navy Department
..... Authority #3

NO OBJECTION
TO PUBLICATION
Office of Public Relations
Navy Department
..... Authority #3

Unidentified
lookout

aft gun deck.....

RM 1



NO OBJECTION
TO PUBLICATION
Office of Public Relations
Navy Department
..... Authority #3

NO OBJECTION
TO PUBLICATION
Office of Public Relations
Navy Department
..... Authority #3

Call #2
Peterson



Roll #1

NO OBJECTION
TO PUBLICATION
Office of Public Relations
Navy Department
..... Authority #3

NO OBJECTION
TO PUBLICATION
Office of Public Relations
Navy Department
..... Authority #3

Peterson



NO OBJECTION
TO PUBLICATION
Office of Public Relations
Navy Department
..... Authority #3

Referson

I # 1159

NO OBJECTION
TO PUBLICATION
Office of Public Relations
Navy Department
..... Authority #3

Referson



NO OBJECTION
TO PUBLICATION
Office of Public Relations
Navy Department
..... Authority #3

NO OBJECTION
TO PUBLICATION
Office of Public Relations
Navy Department
..... Authority #3



2 January, 1943

CAPTIONS FOR UNDEVELOPED PHOTOGRAPHS:

On board U.S.S. ESCANABA, C.G. on Greenland Patrol.

Commanding Officer - Lieut. Comdr. Carl U. Peterson

Roll No. 1:

Photo shows C.Q.M. Woodrow W. Wilkins taking a sight reading from the bridge wing while a lookout stands by.

Photos of Commanding Officer Lieut. Comdr. Carl U. Peterson (no hat wearing glasses) on bridge with a lookout standing by.

Photos of a lookout on the aft gun deck.

Photos of Lieut. Comdr. C.U. Peterson (with winter hat) is shown together with a lookout on the after gun deck. (Lookout is wearing phones and chest speaker).

Roll No. 2:

(L to R). Photo shows Lieut. Robert H. Prause, Executive Officer, of the ESCANABA chatting on the bridge with the Commanding Officer, Lieut. Comdr. Peterson.

Photo shows a few of the crew members who still hadn't gotten their sea-legs who are shown in the act of "heaving" over the starboard bow.

Photo shows one the crew members taking a sounding with a lead line.

Photo shows masthead lookout being relieved.

Photo shows Commanding Officer and his staff of officers while shooting the sun and examining deck gun barrel.

Group photo, L to R: Jesse Treadwell, Ensign (R); James Sullivan, Ensign (R), Henry E. Ringling, Ensign (R), Gordon P. Phillip, Lieut. (j.g.) (R) Robert H. Prause, Lieutenant, Carl U. Peterson, Lieut. Comdr. (Commanding Officer), William P. Thoman, Ensign, John D. Cameron, Jr., Ensign (R), Richard A. Arrighi, Ensign (R).

(MORE)

Cont'd.

Photos by: Ray Platnick, P.M.lc.

On board U.S.S. ESCANABA, C.G. on Greenland Patrol.

Commanding Officer -Lieut. Comdr. Carl U. Peterson

Roll No. 3:

Four officers taking sights (three may only be shown in picture). Officer on extreme left is Lieutenant Robert H. Brause, Executive Officer. All are grouped around a "K" gun - (Depth Charge).

Photos of two crew members (L to R) Raymond Bykowski, Coxswain, of Milwaukee and Sidney A. More, SOM.3c., of Chicago, showing a winged visitor which struck the mast and fell to the deck. Officer with them is Lieut. Comdr. Peterson.

Photo of a foul weather suit being worn by an officer standing near a "K" gun.

Photos of gun crew testing firing of 20MM gun in cold weather, from the bridge wings.

Photo of this group of eight (8) enlisted men all garbed in heavy arctic clothing are shown on the after gun platform, L to R, Clifford B. Skarin, Y2c., Edward McMahon, Y.3c., William Bath, Y.3c., Sidney A. More, SOM.3c., Walter F. O'Leary, Sea.lc., Joseph C. Sommers, Sea.lc., Robert Kouba, Sea.lc., Robert G. McCready, S.M.3c.

NOTE: ALL THE ABOVE MEN IN THIS PICTURE ARE FROM CHICAGO AND THE IMMEDIATE VICINITY.

Roll # 4

Photos taken in a light snow (hazy day) while enroute and show gun crews under officer supervision going through various maneuvers.

Other photos on the # roll show all hands at Quarters on deck.

Gun in photo is 50 cal. 3in.

(MORE)

Photos by Ray Platnick PM 1/c

On board U.S.S. ESCANABA, C.G. on Greenland Patrol

Commanding Officer - Lieut. Commander Carl U. Peterson

ROLL # ★ 5

Photos of officers and men taken during all hands at Quarters on deck.

Other photos are at entrance to our first Newfoundland port in a driving snow which shown lookouts on the bridge and sending light signals from the bridge also.

END