

Status of NAPR Cleanup Program Sites Under RCRA

The Resource Conservation and Recovery Act, commonly known as RCRA, was enacted by Congress in 1976 to address how to safely manage and dispose of the volumes of municipal and industrial solid waste generated nationwide.

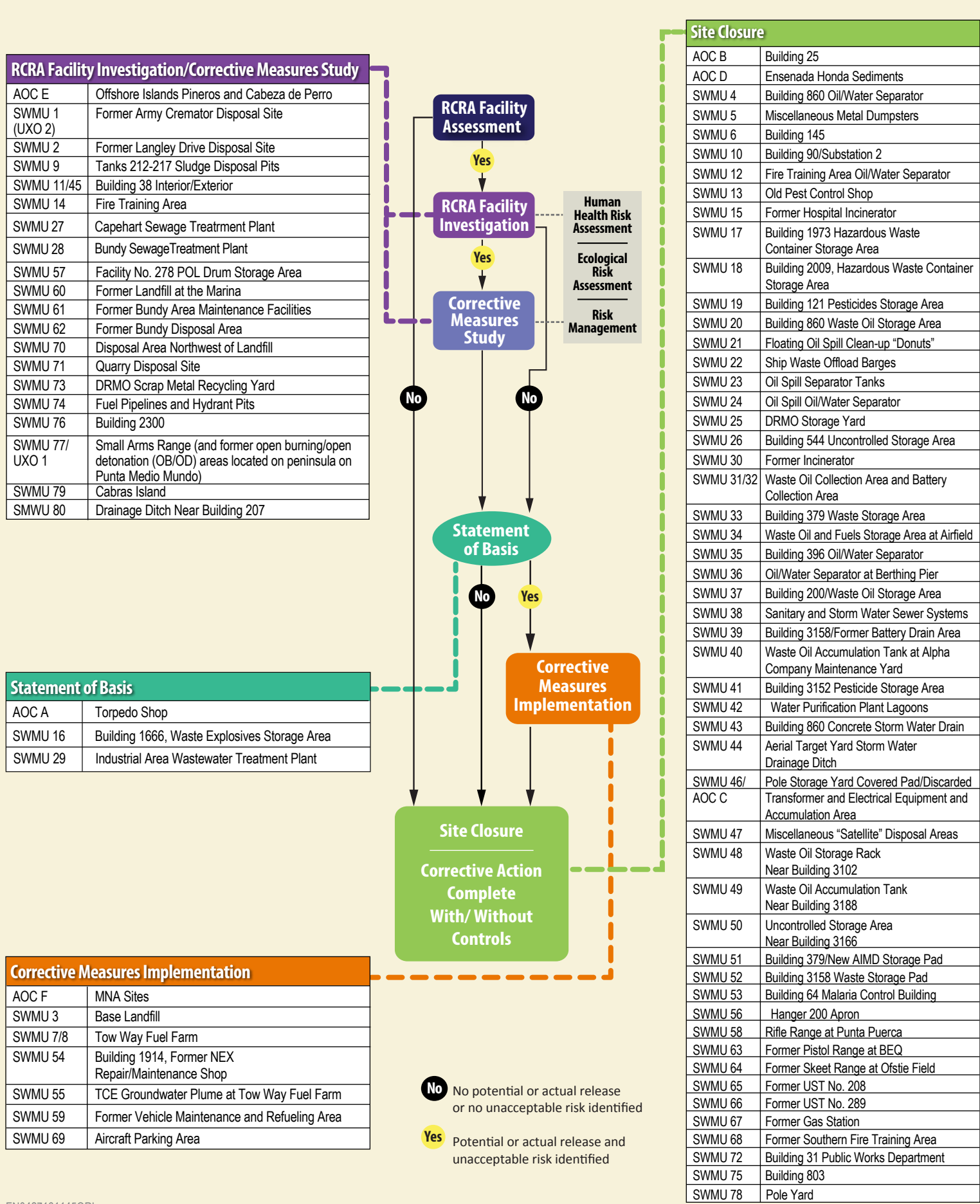
One of the key provisions of the law requires owners and operators of facilities covered by RCRA to clean up contamination resulting from present and past practices. These clean-up activities are known as corrective action.

The Navy is performing clean up on the Former Naval Station Roosevelt Roads, now referred to as Naval Activity Puerto Rico (NAPR) in accordance with RCRA. Below is a description of each of the steps in the RCRA corrective action process applicable to the various NAPR sites the Navy is cleaning up. The flow chart on the reverse side shows how NAPR sites are progressing in the clean-up process

- **RCRA Facility Assessment (RFA)** – Often the RFA is the first step in the corrective action process. The RFA compiles existing information on environmental conditions at a facility, including information on actual or potential releases.
- **RCRA Facility Investigation (RFI)** – The RFI takes place when releases, or potential releases, have been identified and further investigation is necessary. The purpose of the RFI is to gather enough information to sufficiently characterize the nature and extent of contaminants to determine the appropriate response action. Risk assessments are also conducted as part of the RFI. The risk assessments estimate the risks to people’s health and the environment from potential exposure to the contaminants at a site.
- **Corrective Measures Study (CMS)** – After the RFI is completed, if cleanup is necessary, the CMS identifies and evaluates cleanup approaches that may be selected.
- **Statement of Basis** – After review of the CMS, a Statement of Basis is developed which describes the basis for corrective measure selection. Members of the public are provided with an opportunity to comment on the corrective measure.
- **Corrective Measures Implementation (CMI)** – Once a corrective measure has been selected, the facility enters the CMI phase of corrective action. During the CMI, the owner/operator of the facility implements the chosen corrective measure. The CMI includes design, construction, operation, maintenance, and monitoring of the chosen corrective measure.
- **Site Closure** – A Corrective Action Complete determination is issued when investigations are complete and contamination levels are reduced to applicable levels. Corrective Action Complete determinations may be made “With” or “Without” controls in place. The approved controls may be engineered controls such as waste treatment or containment and/or administrative controls such as land or water use controls.

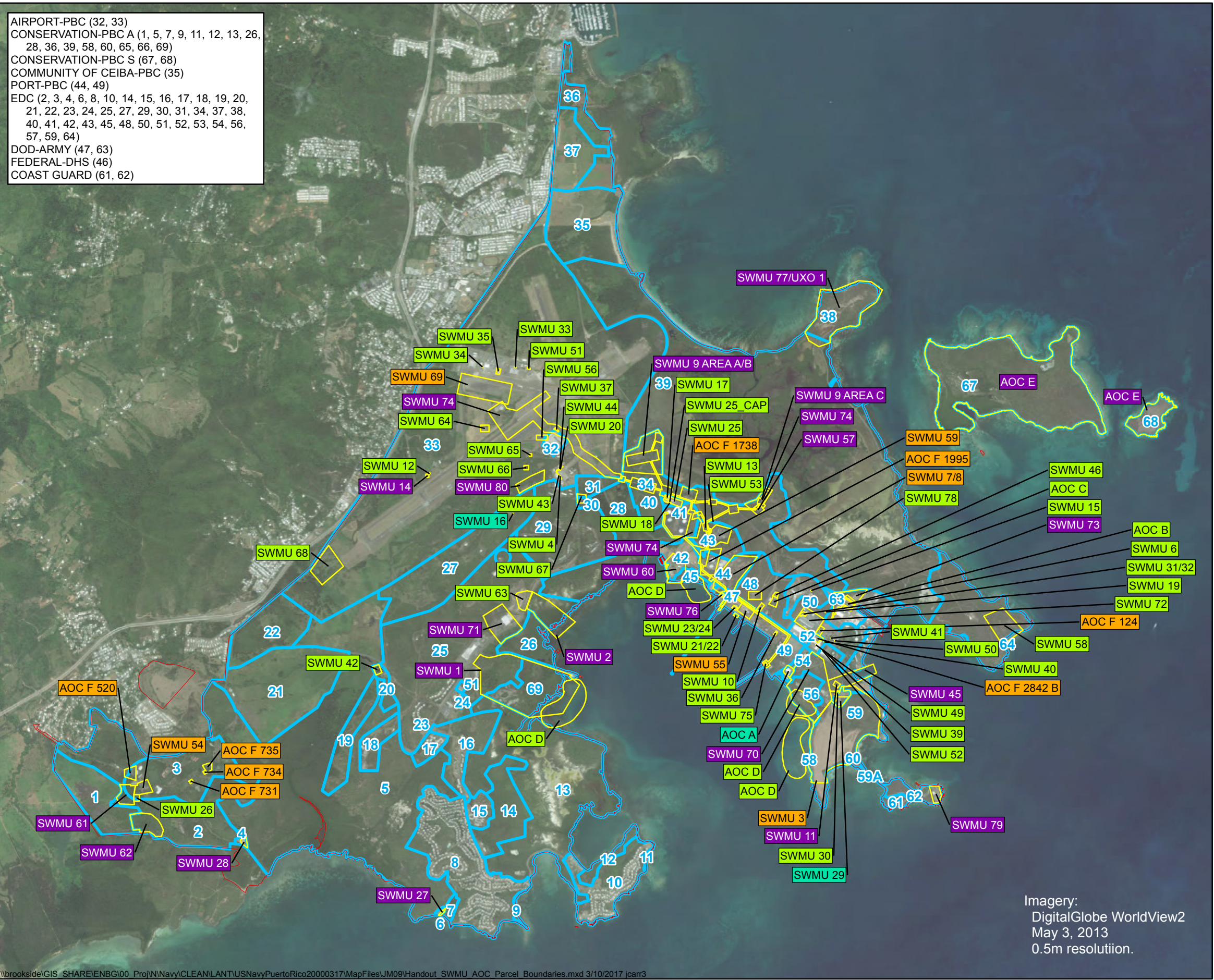
Status of NAPR Cleanup Program Sites Under RCRA

February 2017



Status of NAPR Cleanup Program Sites Under RCRA

- AIRPORT-PBC (32, 33)
- CONSERVATION-PBC A (1, 5, 7, 9, 11, 12, 13, 26, 28, 36, 39, 58, 60, 65, 66, 69)
- CONSERVATION-PBC S (67, 68)
- COMMUNITY OF CEIBA-PBC (35)
- PORT-PBC (44, 49)
- EDC (2, 3, 4, 6, 8, 10, 14, 15, 16, 17, 18, 19, 20, 21, 22, 23, 24, 25, 27, 29, 30, 31, 34, 37, 38, 40, 41, 42, 43, 45, 48, 50, 51, 52, 53, 54, 56, 57, 59, 64)
- DOD-ARMY (47, 63)
- FEDERAL-DHS (46)
- COAST GUARD (61, 62)



- LEGEND
- AOC/SWMU Boundary
 - Parcel Boundary
 - Boundary Naval Activity Puerto Rico

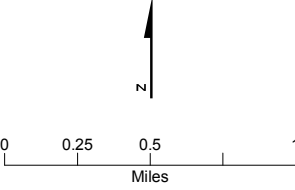


FIGURE 1
AOC, SWMU, and Parcel Boundaries
Naval Activity Puerto Rico
(Former Roosevelt Roads Facility)
Ceiba, Puerto Rico

Imagery:
DigitalGlobe WorldView2
May 3, 2013
0.5m resolution.