

2021 Look Back / 2022 Look Ahead Environmental Cleanup Program

Naval Station Treasure Island Restoration Advisory Board Meeting

Dave Clark, Lead Remedial Project Manager

12/8/2021

Tonight's Presentation Topics

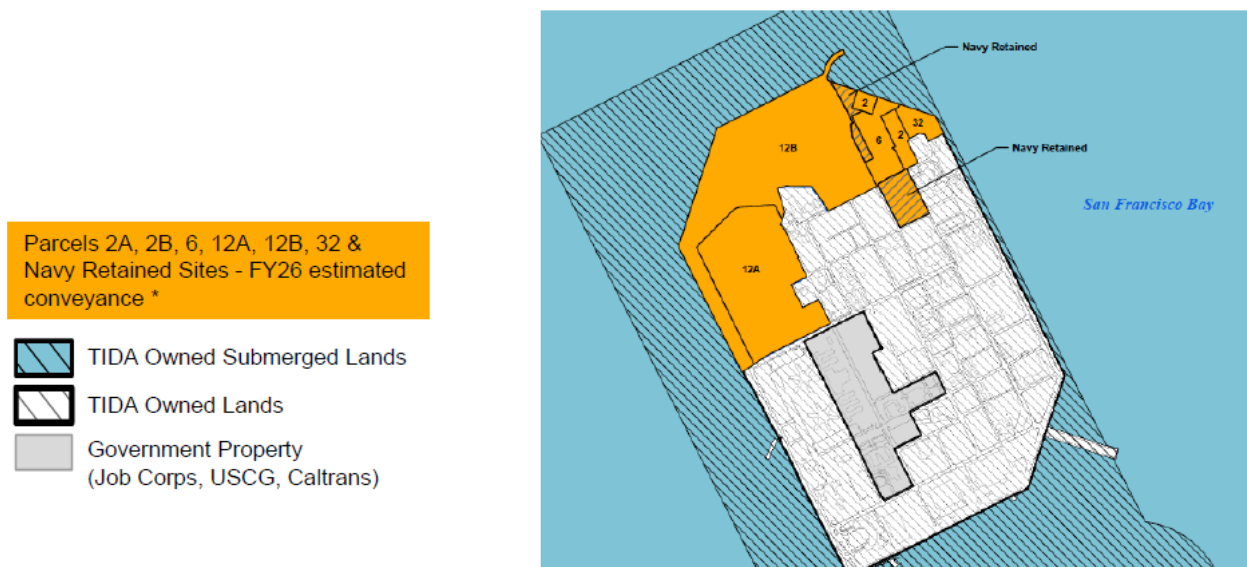


- **Property Transfer Progress**
- **2021 Look Back**
- **2022 Look Ahead**
- **Funding Update**

Property Transfer Progress



- 1993: Closure officially established by Base Realignment and Closure Act of 1990
- 1994: RAB established
- 1997: September 30 (end of fiscal year) operational closure of TI
- Total acres at TI = approximately 1,077
- Approximately 948 acres have been transferred
- 129 acres remaining to be transferred to Treasure Island Development Authority (TIDA)
- Most recent transfer: 20 acres – Site 24 (former dry cleaning facility) to TIDA in 2019



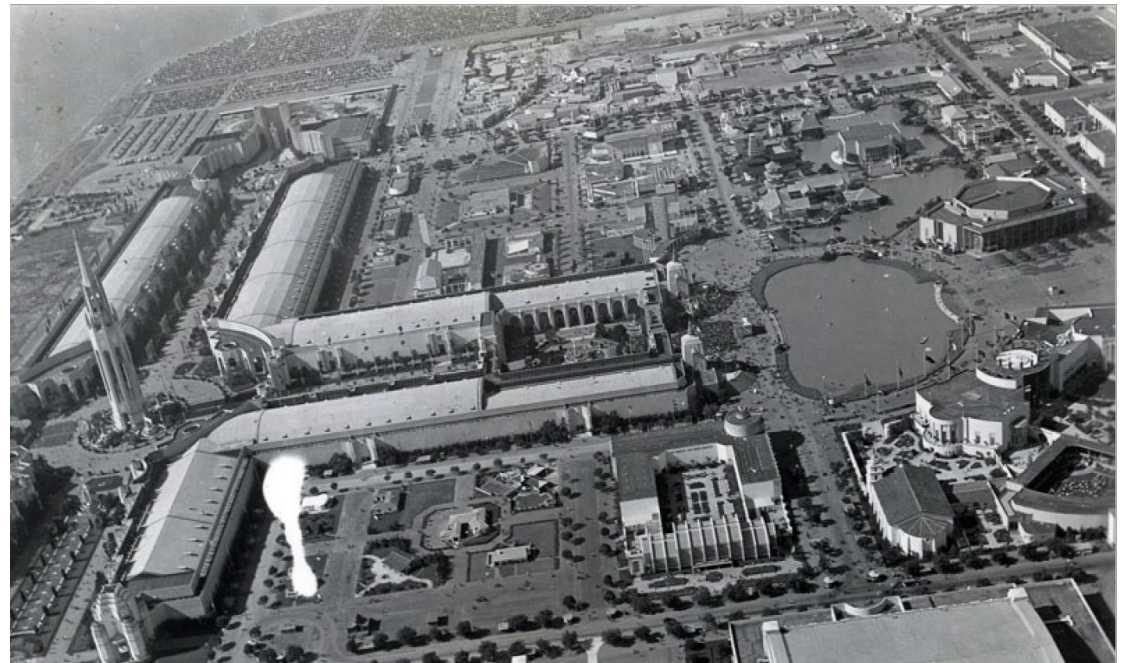
2021 Look Back Overview



- **Final Documents Completed**

- **Fieldwork Conducted**

- Areas of Radiological Interest
- Phase IV Westside Solid Waste Disposal Area (SWDA)
- Basewide Monitoring Program (BWMP)



Final Documents Completed – Site 12 Housing Area



Site 12 Housing Area Aerial View

- Non-Time Critical Removal Action (NTCRA) Phase IV Westside SWDA Work Plan
(March 2021)
- Areas of Potential Radiological Interest Investigation Work Plan
(May 2021)

Final Documents Completed – Other Sites



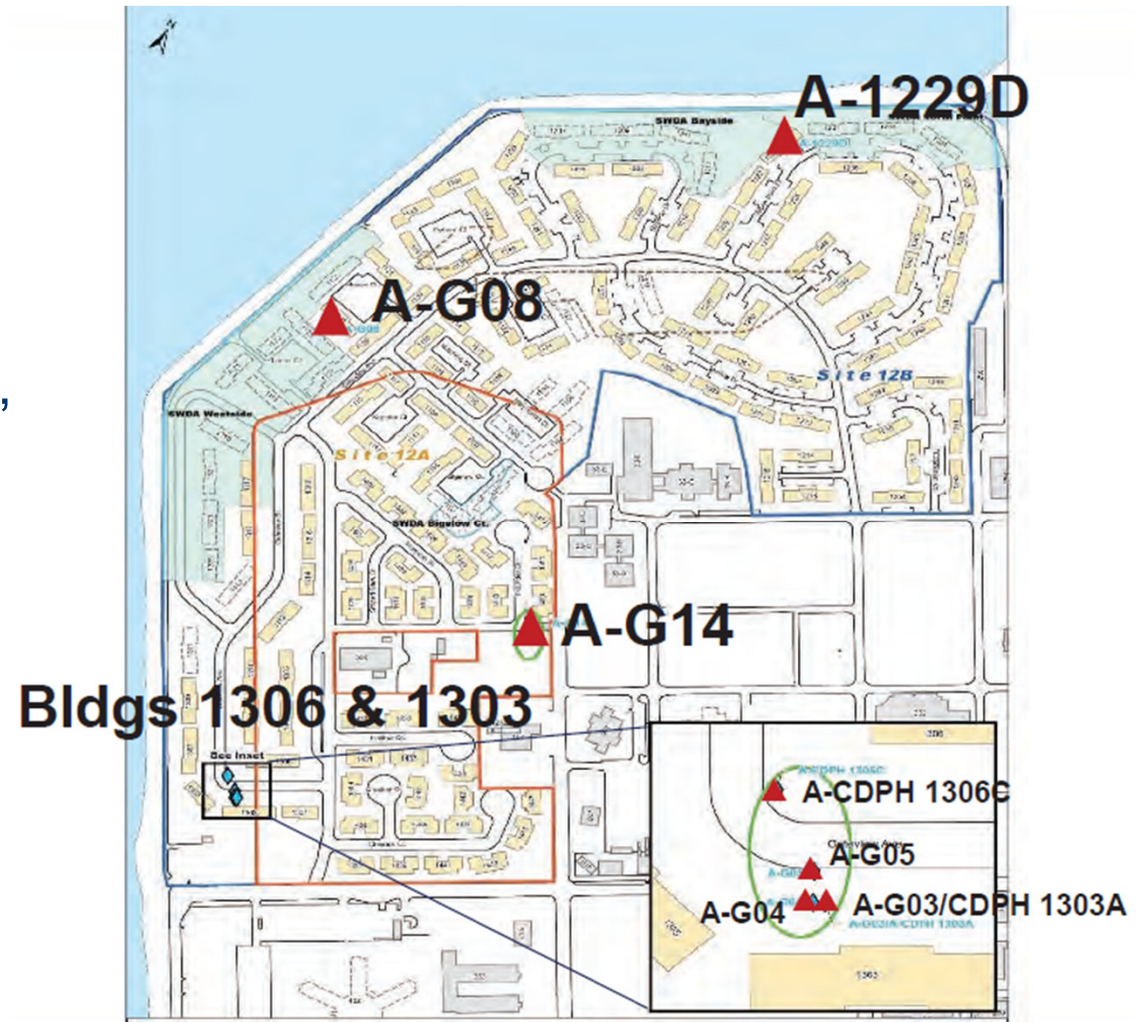
- **2019 Basewide Monitoring Report**
(May 2021)
- **Basewide PFAS Preliminary Assessment** *(July 2021)*
- **2021 BWMP Work Plan**
(December 2021)
- **2020 Five-Year Review Addendum**
(December 2021)
- **Site 6 PFAS RI Work Plan**
(December 2021)
- **2020 BWMP Report** *(November 2021)*
- **2021 Site Management Plan**
(December 2021)



Areas of Radiological Interest Investigation Fieldwork Conducted



- Investigated seven (7) previously identified radiological anomalies by excavating June 7-18, 2021
- Only one of seven locations, presented a low-level radiological object (LLRO)
- This LLRO was under the foundation of Bldg 1229. A vacant building which was never leased to TIDA for occupancy



Areas of Radiological Interest Investigation Fieldwork Conducted (Cont'd)



• A-1229D Excavation



A-1229D Excavation LLRO – Clump of Sandy Material

- No previous excavation was performed at this location
- Sawed through approximately 4 inches of concrete
- A LLRO was found approximately 2 inches below concrete
- The LLRO was a 1 inch diameter clump of sandy material
- Removed one cubic foot of material around and below LLRO location
- No additional elevated counts were recorded following the removal

SWDA Westside Phase IV NTCRA Fieldwork Ongoing



- **SWDA Westside Phase IV NTCRA Objectives:**
- Remove existing Phase III soil stockpiles and former radiological screening pads
 - Munitions of explosive concern (MEC) and radiological screen as needed
- Restore SWDA westside to pre-existing ground surface
 - Clear and remove vegetation
 - Remove trash and miscellaneous debris
- Mobilized to site on March 8, 2021
- Projected to finish MEC screening by end of 2021
- Site restoration by Summer 2022



SWDA Westside Munitions Screening Ongoing



- **Material Documented as Safe (MDAS):** A munitions item that has been assessed and documented as not presenting an explosive hazard and for which the chain of custody has been established and maintained. This material is not an explosive hazard.
- **Munitions and Explosives of Concern (MEC):** A classification that includes those military munitions that may pose an explosive safety risk.



Munitions Screening at SWDA Westside

SWDA Westside Munitions Screening Ongoing



- 26 MEC and 77 MDAS items recovered to date during the Phase IV NTCRA fieldwork
 - Cartridge cases
 - Projectiles
 - MK II Hand Grenades

Projectile Fuze (MEC)

SWDA Westside Munitions Screening Ongoing



Top two items 20mm cartridge cases
Bottom item 20 mm projectile (MDAS)



Metallic debris encountered in stockpiles

Wide Range of Items Found from the SWDAs!



Flashlight.

Basewide Monitoring Program (BWMP)



- Conducted basewide groundwater and soil gas monitoring in March, June, September, and December 2021
- Expansion of the soil gas network at Site 24 to realign institutional controls related to occupancy and indoor air safety requirements

Sampling at site 12



cleaning sample equipment



BWMP Well Protection



Before and after the bollard installation on Ave M



Typical bollard installation, embedded about 2' and filled with cement

Fence Maintenance



Halyburton / Bigelow Ct.
(Site 12):
View of loose privacy screen along the southeast boundary of the site. View to N.



Halyburton / Bigelow Ct.
(Site 12):
Privacy screen re-attached to fence mesh. View to N.



SWDA Westside Site 12:
View of fence post detached from fence mesh. View to E.



SWDA Westside Site 12:
Fence post re-attached to fence mesh. View to E.

2022 Look Ahead



2022 Work Plans

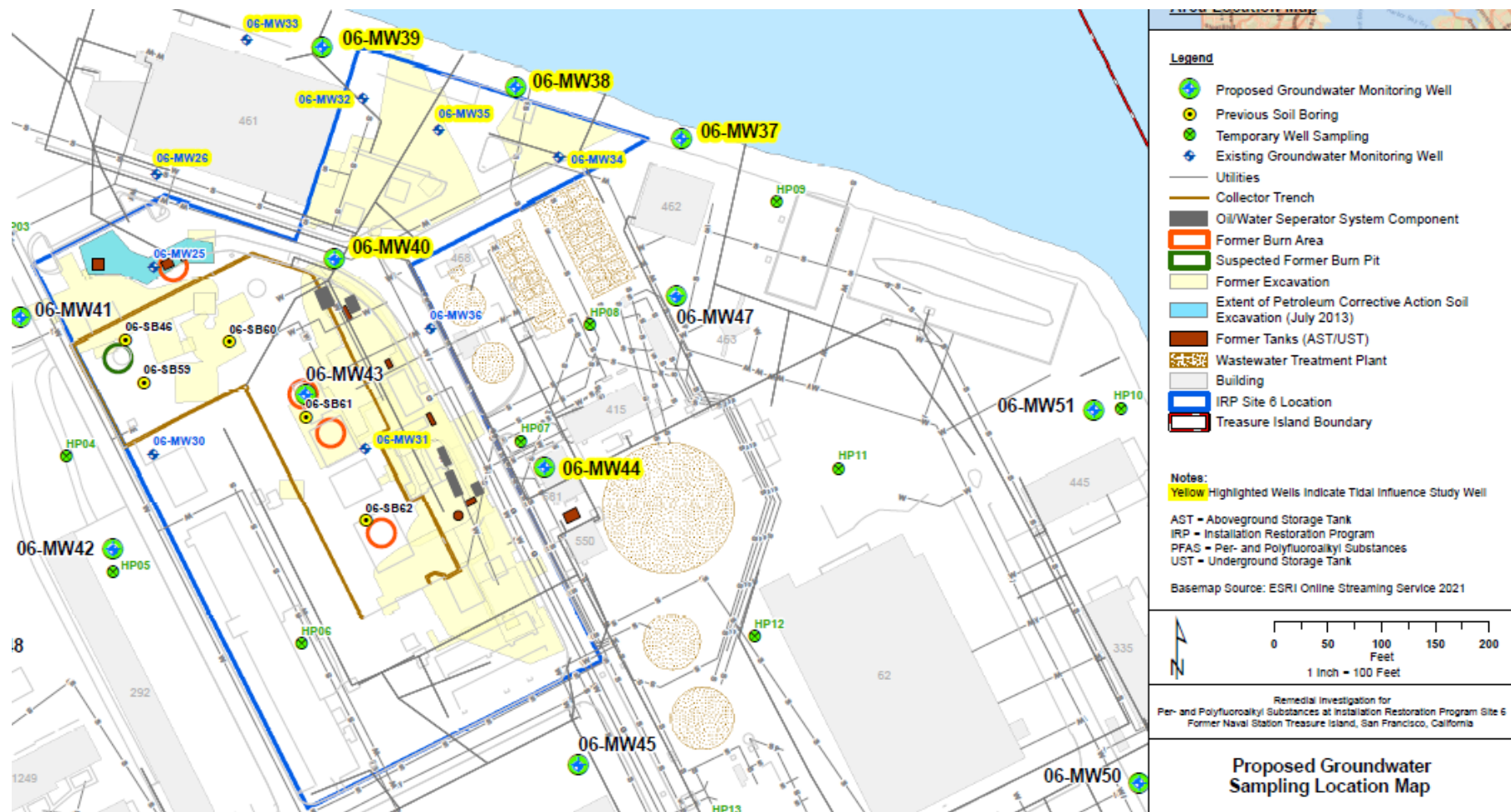


- Site 32 Final Status Survey (*March 2022*)
- Basewide PFAS SI (*June 2022*)
- YF3 Data Gap Evaluation (*September 2022*)

2022 Planned Field Work Site 6 – Spring 2022



- PFAS RI at Site 6



2022 Planned Field Work PFAS Site Investigation - June



2022 Final Reports (Projected)



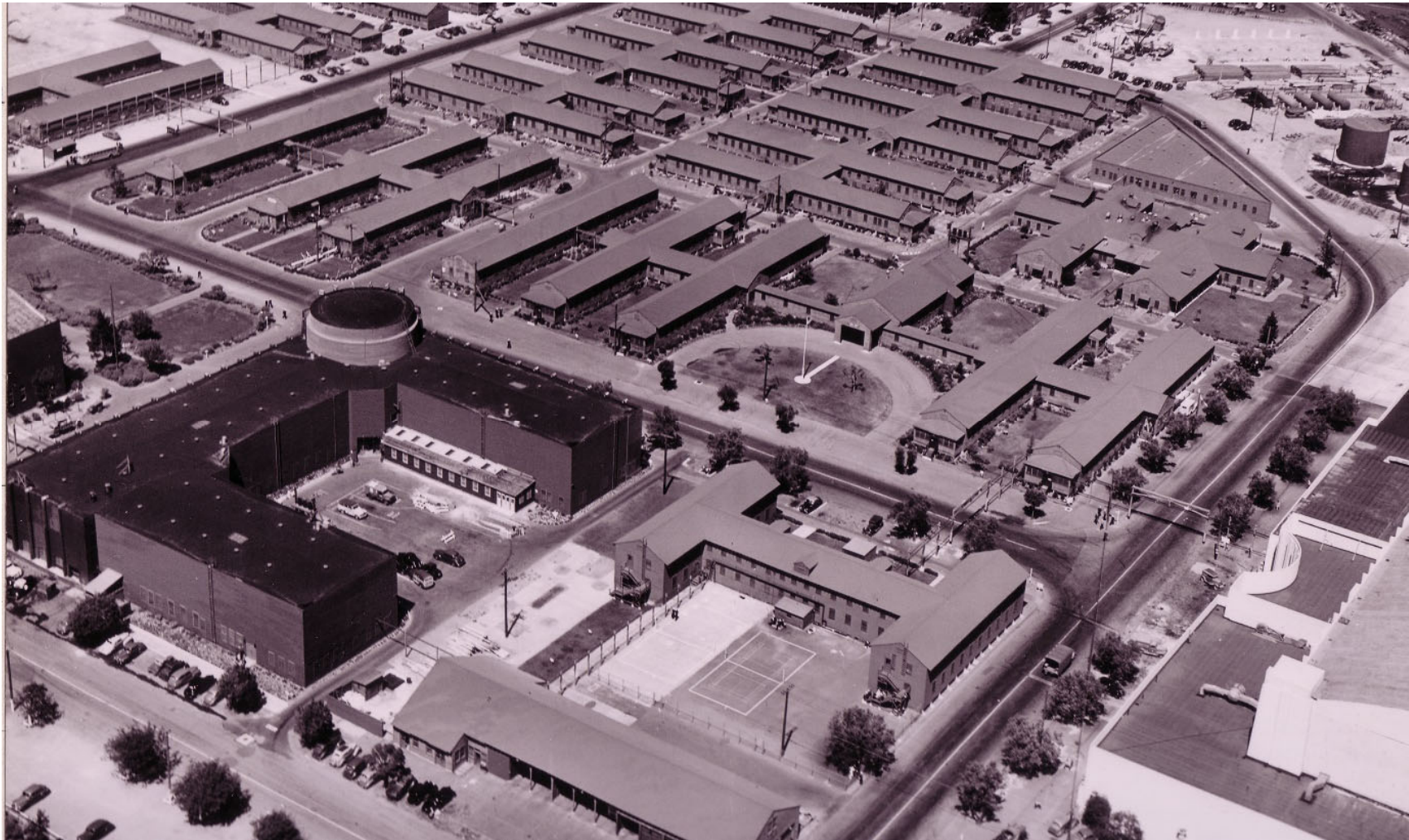
- NTCRA Post Construction Summary Report Phase III Addendum *(February 2022)*
- 1400 Housing Radiological Site Investigation Report *(May 2022)*
- Interim Remedial Action (RA) Completion Report for Chemical RA *(June 2022)*
- UST 248A-D Closure Report *(July 2022)*
- 2021 BWMP Report *(August 2022)*
- Explanation of Significant Difference for the Records of Decision for Sites 6, 12, and 24 *(August 2022)*
- Site 12 RAD/ MEC Conceptual Site Model Technical Memorandum *(August 2022)*
- Site 6 PFAS Remedial Investigation Report *(November 2022)*
- Areas of Potential Radiological Interest Investigation Tech Memo *(December 2022)*

Treasure Island Environmental Funding



- Expenditures through FY21: \$299.3M
- FY22 Budget: \$6M
- Cost-to-Complete (FY23+): \$9.7M
- Cost to complete does not include costs for:
 - Site 12
 - Additional removal of any remaining subsurface radiological objects
 - Additional chemical remediation, including SWDAs
 - Site 6 remediation due to PFAS contamination
 - New sites identified in the Basewide PFAS Preliminary Assessment (PA)

Questions?



Southeast corner of TI during WWII – Legacy Exposition buildings and newer medical buildings.