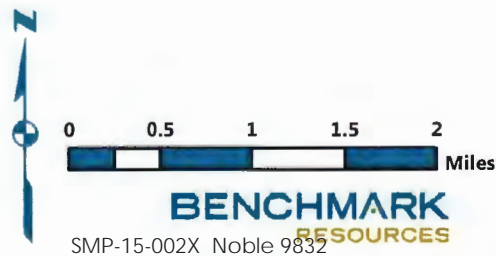


SOURCE: ESRI World Shaded Relief 2016; ESRI World Streetmap 2009; Compiled by Benchmark Resources in 2016

LEGEND

- - - - - Site Location
- County Boundary
- Major Highway
- Highway
- Streets
- Major City
- Water Body

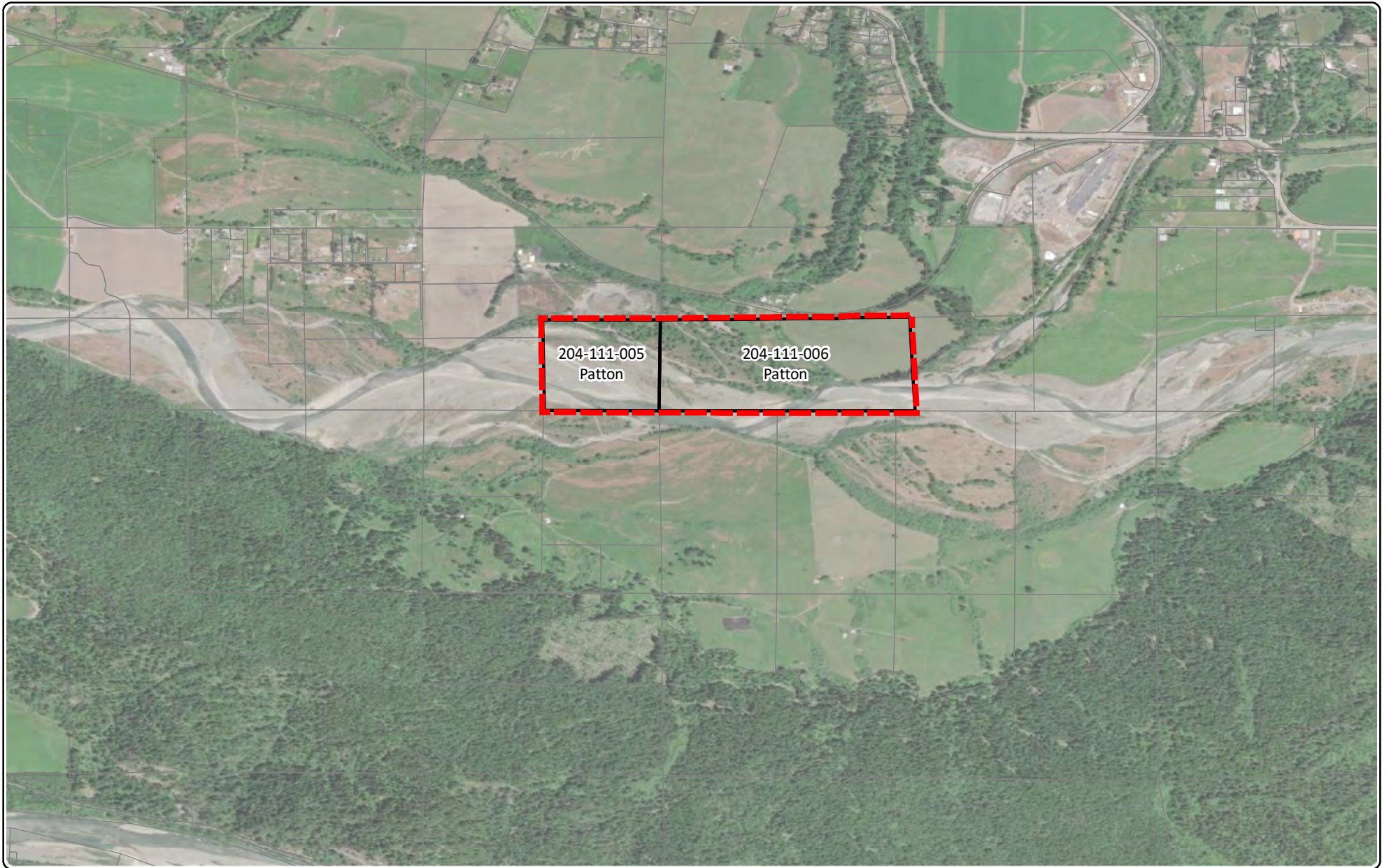


USACE File ID: 2007-00633N
Van Duzen River Gravel Extraction
Hydesville, Humboldt County
June 9, 2022

U.S. Army Corps of Engineers
San Francisco District
 Regulatory Division


Enclosure 1 4 Sheets


Site Location
VAN DUZEN RIVER RANCH
Figure 1
 Page 77




Aerial Source: Esri, Maxar, GeoEye, Earthstar Geographics, CNES/Airbus DS, USDA, USGS, AeroGRID, IGN, and the GIS User Community

Legend:

 Site Boundary


 Parcels

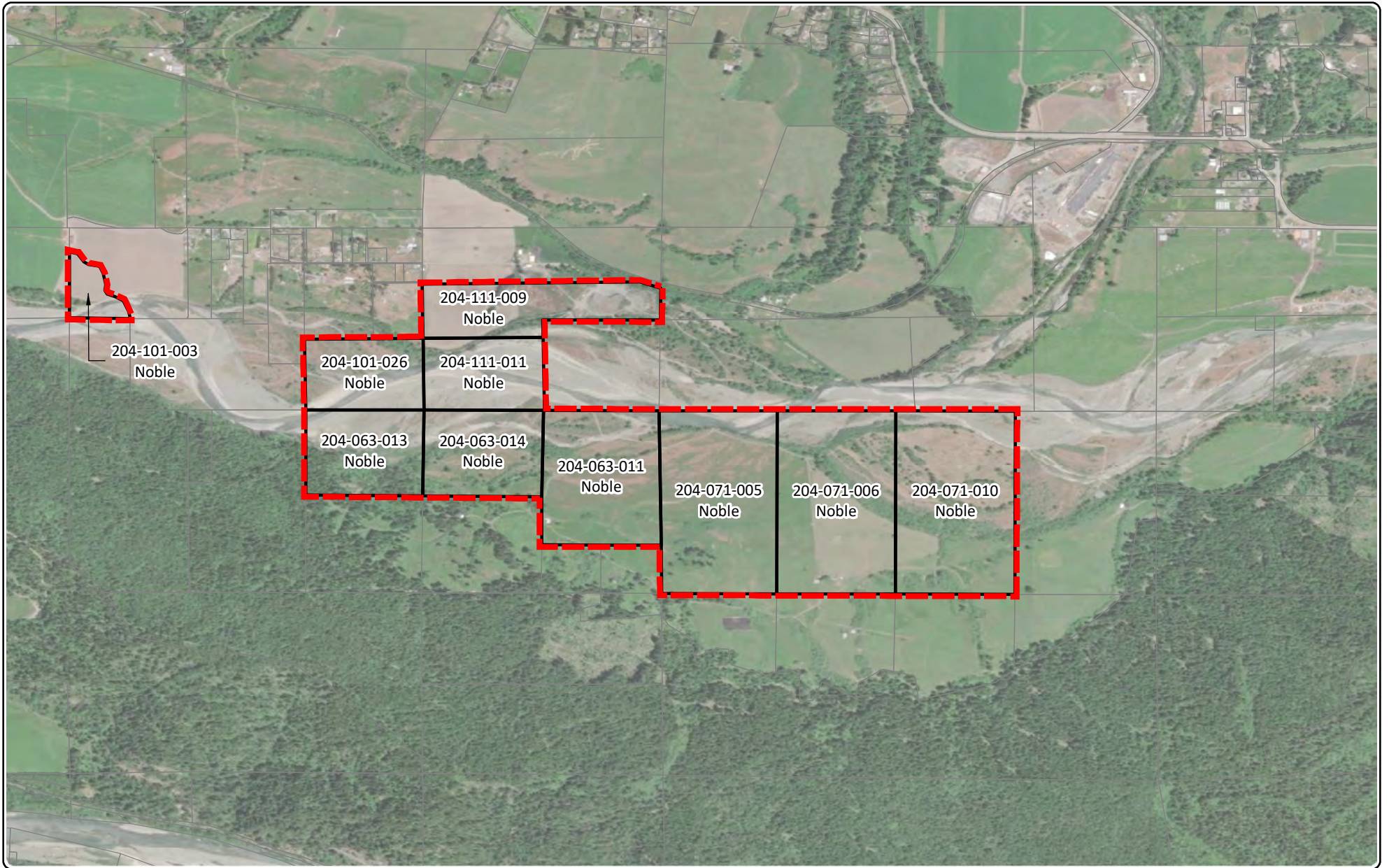
0 1,000 2,000 4,000 Feet 

Project & Parcel Boundaries
 Patton Van Duzen River Ranch
 Mercer-Fraser Company
 Humboldt County

Figure 1 2/14/2022



Disclaimer: The data was mapped for planning purposes only. No liability is assumed for accuracy of the data shown.





Aerial Source: Esri, Maxar, GeoEye, Earthstar Geographics, CNES/Airbus DS, USDA, USGS, AeroGRID, IGN, and the GIS User Community

Legend:

-  Site Boundary
-  Parcels

Project & Parcel Boundaries
 Noble Van Duzen River Ranch
 Mercer-Fraser Company
 Humboldt County

Figure 1

2/14/2022

Disclaimer: The data was mapped for planning purposes only. No liability is assumed for accuracy of the data shown.



