

GENERAL ORDERS.

BUGLE CALLS ON SHIPBOARD

COMPILED FOR USE OF

U. S. REVENUE CUTTER SERVICE

By SECOND LIEUT. C. E. JOHNSTON,
REVENUE CUTTER SERVICE.

OCTOBER, 1898.

WASHINGTON:
GOVERNMENT PRINTING OFFICE.
1898.

Treasury Department,

OFFICE OF THE SECRETARY,

WASHINGTON, D. C., *October 10, 1898.*

General Order No. 40.

DIVISION OF REVENUE CUTTER SERVICE.

The following order is published for the information and government of the officers of the Revenue Cutter Service:

From and after this date the bugle calls, etc., herein set forth, will be enforced on board all first and second rate vessels of the Revenue Cutter Service. The descriptive matter over each piece of music will be regarded as the Regulation on the subject with which it deals. The hours for Reveille, Tattoo, Taps, and all *Special Calls*, will be fixed in the discretion of commanding officers.

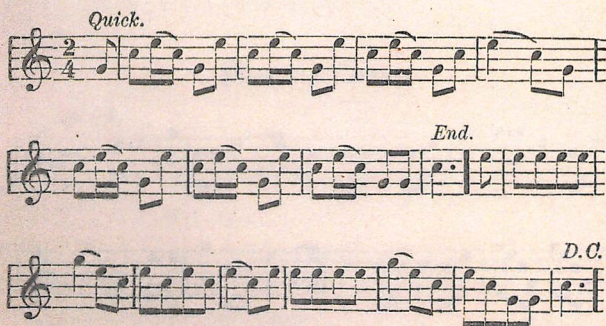
W. B. HOWELL,
Assistant Secretary.

Bugle Calls on Shipboard.

GENERAL CALLS.

REVEILLE should be sounded to call out all hands in the morning; when the vessel is under way and the men are standing watch and watch, the call should be sounded only when all hands are turned out, usually at 7 a. m. Night watches and idlers should be called by the chief petty officer of the watch on deck.

Reveille.



THE ASSEMBLY OF TRUMPETERS, better known as the Call, is sounded five minutes before Colors, Retreat, and Tattoo.

The Call.



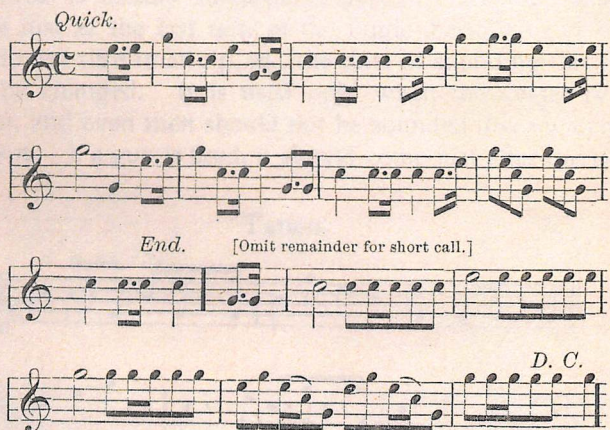
Bugle Calls on Shipboard.

TO THE COLOR, OR MORNING COLORS, should be sounded at the permanent setting of the colors in the morning, whether it be at sunrise or at 8 a. m. It should be immediately preceded by three flourishes, and the colors should reach the peak at the last note of the music. Do not hoist during the flourishes.

Three Flourishes.



Morning Colors.



RETREAT, OR EVENING COLORS, should also be immediately preceded by three flourishes, the colors starting down at the first note of the regular call, but not during the flourishes; the colors ought to reach the deck at the last note of the call.

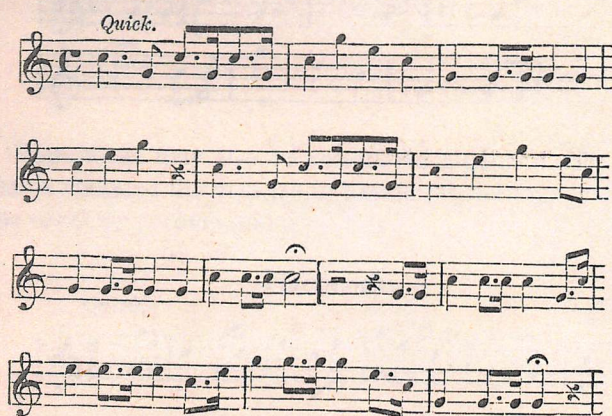
Bugle Calls on Shipboard.

Evening Colors.



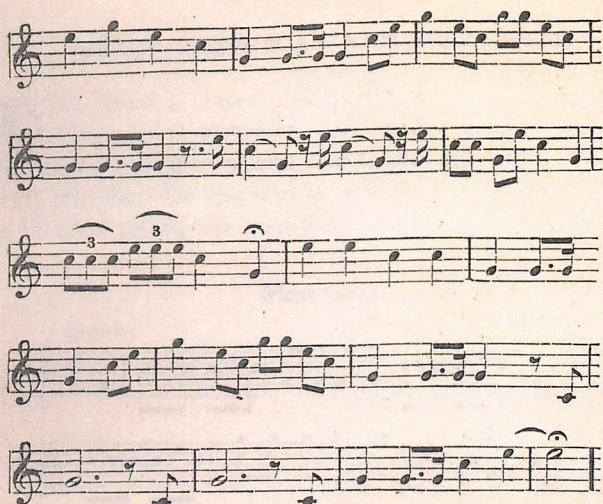
TATTOO is usually sounded at 9 p. m., two bells being struck just as the last note of the bugle dies away. If the men do not turn in at 9 p. m., the time of sounding this call may be changed. It is used only when the vessel is at anchor, and even then should not be sounded if sea watches are kept. If a gun is fired, it should come just after the two bells.

Tattoo.



Bugle Calls on Shipboard.

Tattoo—Continued.



EXTINGUISH LIGHTS, commonly known as Taps, is usually sounded at 9.05 p. m. in port with only an anchor watch set. The call is also used at military funerals, being sounded after the body is lowered into the grave.

Taps.



Hammocks may also be considered a general call; when this is sounded the men fall in beside the nettings and await the order to uncover and pipe down.

Hammocks.



Bugle Calls on Shipboard.

SPECIAL CALLS,

OTHER THAN BOAT AND DRILL CALLS.

MESS GEAR is sometimes spread by bugle call and sometimes by boatswains' call; if the gear is spread for one watch at a time, sound one C after the call for the star-board and two for the port watch. The Mess Call should not be used unless the men form and march to meals.

Mess Gear.



Mess Call.



This call is sounded for the sick men to report to the surgeon, and is usually sounded at 9 a. m.

Sick Call.



Bugle Calls on Shipboard.

Clean Brightwork is a port routine call to clean the gun and deck brightwork, and is seldom used unless followed by inspection at quarters.

Clean Brightwork.



To put away cleaning gear, sound—

Knock off Brightwork.



Bugle Calls on Shipboard.

DRILL CALLS.

THE nature of the exercises for all hands having been published beforehand, the drill call should be sounded long enough before the time for drill to allow the men to get themselves ready. When only one division or gun's crew is to be exercised, the men are usually assembled by boat-swains' call.

Drill Call.



Five minutes before drills and Sunday muster, sound the

Officers' Call.



When it is time for the formation, sound the

Assembly.



Bugle Calls on Shipboard.

At the call to general quarters, the men hasten to their stations and cast loose and provide without further orders.

General Quarters.



Commence Firing.

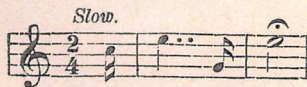


Cease Firing.

NOTE.—This call is also frequently used to stop the pump at fire quarters.



Silence.



THE RECALL is used to signify that the drill period has expired.

Recall.



Bugle Calls on Shipboard.

Secure.



Dismiss.



Fire Alarm.

On board ship the customary fire alarm is the rapid ringing of the bell, and the bugle call used in barracks is generally considered superfluous as an adjunct to the bell.

Bugle Calls on Shipboard.

BOAT CALLS.

NOTE.—If there are two or more boats of the same class, sound one C for the first, two C's for the second, etc., after the call.

Gig.

Moderate.



Launch.

Moderate.



Cutter.

Quick.



Whaleboat or Surfboat.

Quick.



Bugle Calls on Shipboard.

Díngey.

Quick.



Admiral's Barge.

Quick.



To hook on a boat, sound her call, adding

Hook On.

