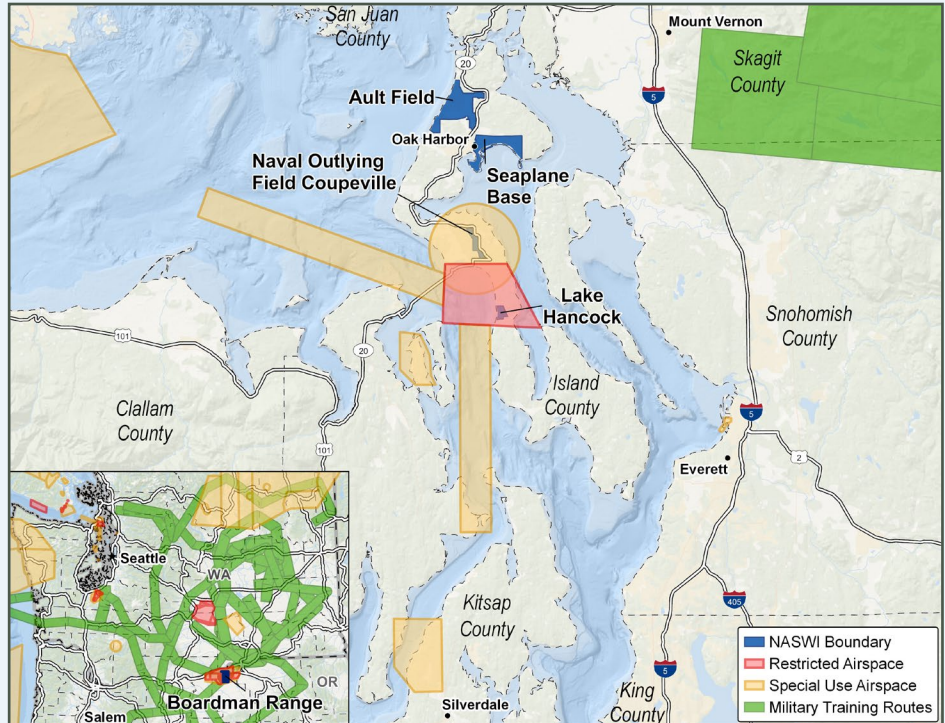


NAVAL AIR STATION WHIDBEY ISLAND OPERATIONS AND ECONOMIC CONTRIBUTIONS



OPERATIONAL OVERVIEW

As the sole naval aviation support installation in the Pacific Northwest, Naval Air Station Whidbey Island (NASWI) provides high quality facilities, services, and products to the naval aviation community and all other organizations utilizing the air station. NASWI land holdings include Ault Field, the Seaplane Base, OLF Coupeville, Lake Hancock, Coos Head, and Boardman Target Ranges. Ault Field, the Seaplane Base, OLF Coupeville, and Lake Hancock are all located on Whidbey Island, while Coos Head and the Boardman Range are located in Oregon. Ault Field hosts cutting edge aircraft and supports over 75 tenant commands. Its primary aircraft include the Department of Defense's premier electronic attack aircraft, the EA-18G Growler, and the new P-8 Poseidon which has joined the P-3 Orion and EP-3 Aries in carrying out the Navy's shore based maritime, patrol, and reconnaissance mission.



NASWI also supports an active Search and Rescue unit. The Seaplane Base accommodates fuel receipt operations, ordnance storage, and explosive ordnance disposal units. The remainder of the 2,820-acre site primarily functions as a personnel support and housing area. OLF Coupeville is a 664-acre site used primarily by EA-18G aircraft for Field Carrier Landing Practice.

ECONOMIC HIGHLIGHTS

NASWI's contribution* to the regional economy in Fiscal Year (FY) 2017 totaled \$1.04 billion and included:

- **\$488 million in industry output** - \$246 million from payroll; \$235 million from operations and contracts; and \$7 million from visitor spending.
- **\$548 million in direct military and civilian payroll expenditures** to personnel residing in the Region of Influence (ROI).**
- **12,925 jobs** - including 9,078 military/civilian personnel residing in the ROI and an estimated 3,847 jobs stimulated from base operations and maintenance, personal spending, and visitor spending.
- **\$35 million*** in state and local tax revenues** - \$21 million from payroll; \$13 million from operations and maintenance; and \$787,000 from visitor spending.



Source: NASWI Economic Impact Assessment, November 2018 (using financial data from FY 2017).

*EIA results are rounded as appropriate for presentation purposes.

**The ROI for the NASWI EIA includes Island and Skagit counties.

***Provided for informational purposes, not included in the Total Economic Impact.