



Environmental Investigation

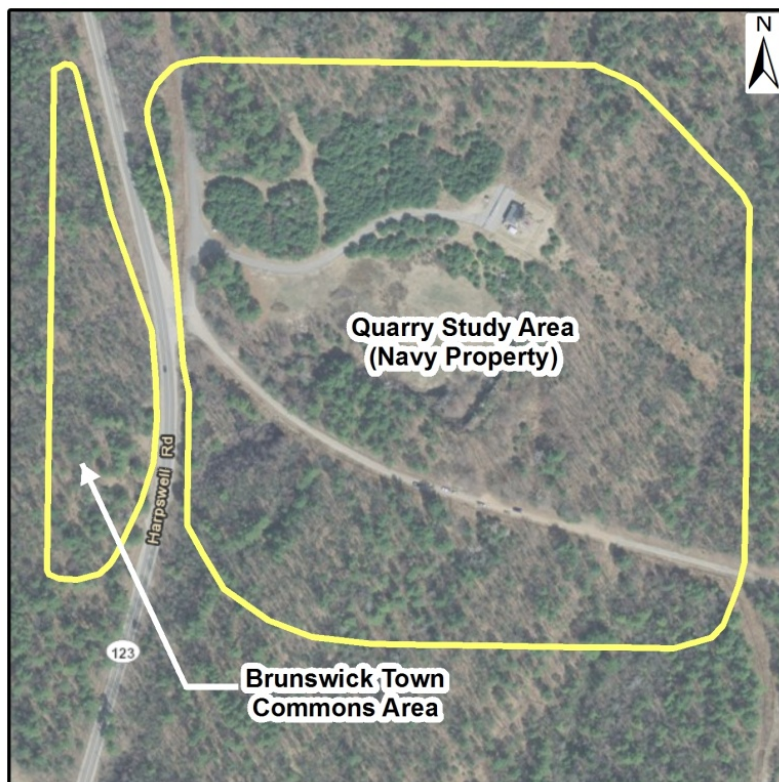
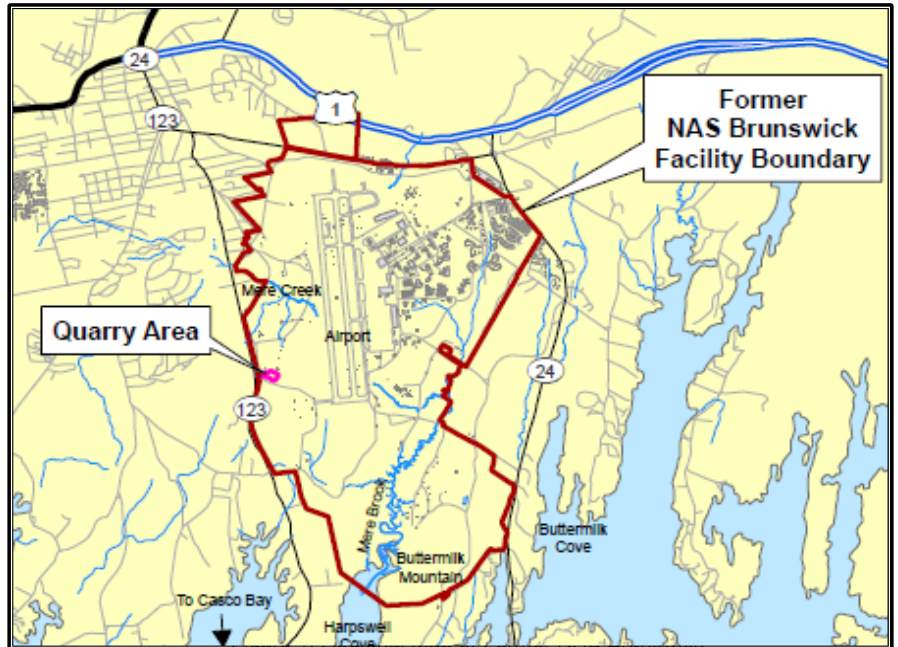
Former NAS Brunswick Quarry, Maine

Fact Sheet No. 1

September 2014

BACKGROUND

The Navy is currently in the process of completing an investigation of the Former NAS Brunswick Quarry Site which lies east of Route 123 (see Figures 1 and 2). This investigation is being performed under the CERCLA program and is being overseen by the US Environmental Protection Agency and the Maine Department of Environmental Protection. The Quarry site is a several acre area containing landfilled materials and other miscellaneous debris typical of Navy operations from the past.



PREVIOUS INVESTIGATIONS AND CONCLUSIONS

Besides the landfilled materials, the Navy has spent the last several years assessing and cleaning up small discarded military items from training and disposal activities at the Quarry. Most of these items have been metal fragments, small fuzes which are similar in size and effects to a large firecracker, and flares. As the studies moved west towards route 123, very few items have been found. Although there is a very low probability of finding any discarded military items, due to the uncertainties associated with the historical uses of the quarry, the Navy has decided to expand the search area across Route 123 on property called the Brunswick Town Commons.

Figure 2: Map Showing Quarry Study Areas

PRESENT SCOPE OF WORK

To complete the study and cleanup process for the Quarry Site, the Navy will be extending the investigation area beyond where it is normally expected to find discarded military items. The expanded area was developed based on current data and potential historical site uses to ensure the extent of military munitions are identified. Any items discovered on this property that represent a potential safety concern will be addressed expeditiously by the Navy team of experts after notifying the Town of Brunswick. The investigation west of Route 123 will last approximately 2 weeks and begin in late September or early October and involve the use of metal detectors and similar equipment.

WHAT DOES THE WORK ENTAIL?

- It will include use of a land surveyor to stake out paths that will be walked by the investigation team. Limited trimming of low tree branches and thick ground brush will be necessary, but no wide-spread vegetation cutting is needed.
- A team of three to four technical experts will use metal detectors to investigate paths known as transects. They will dig up all items detected and record their findings.

WHAT IS EXPECTED TO BE FOUND?

- As was the case with the wooded area on Navy property south of the Quarry, most of what is found is considered cultural debris, consisting of cans, fence scrap, wire, nuts, bolts, and any other common metal debris.
- Expected munitions related debris includes fragments from detonated items, which are not of any concern, but will help complete

the picture showing the extent to which debris may have been scattered.

- Within the Quarry area on the Navy property, very few items of concern have been found. Items found include intact or partially intact items, such as; charges used to dispense items from military aircraft, fuze components, and aircraft rocket parts. Therefore, there is a remote possibility that such items could be west of Harpswell Road.

IS THERE ANY DANGER TO THE PUBLIC?

- Protocol requires the contractor to maintain a safe distance between personnel conducting investigations of potential munitions items and non-essential personnel, especially the public. For this investigation that distance is approximately 150-ft, and is maintained by a safety observer. If someone were to be passing through the woods near the ongoing operation, the work would be suspended until the safe distance is restored.
- There is no reason to consider this area a hazard. If munitions items similar to those found within the quarry exist on the property, they are not easily detonated, and are likely to be buried in the forest floor duff and shallow surface soil.
- This survey is being performed as a conservative measure by the Navy for the protection of human health and the environment.
- Signage will be posted delineating the study area.

CONTACT INFORMATION

- Please direct any questions to: Mr. Paul Burgio, BRAC Environmental Coordinator at (215) 897-4903, or paul.burgio@navy.mil.

For More Information:
MR. Paul Burgio, (215) 897-4903
Paul.burgio@navy.mil