

CITY OF SALMON

WATER SYSTEM IMPROVEMENTS

RIVER CROSSINGS

MARCH 2021

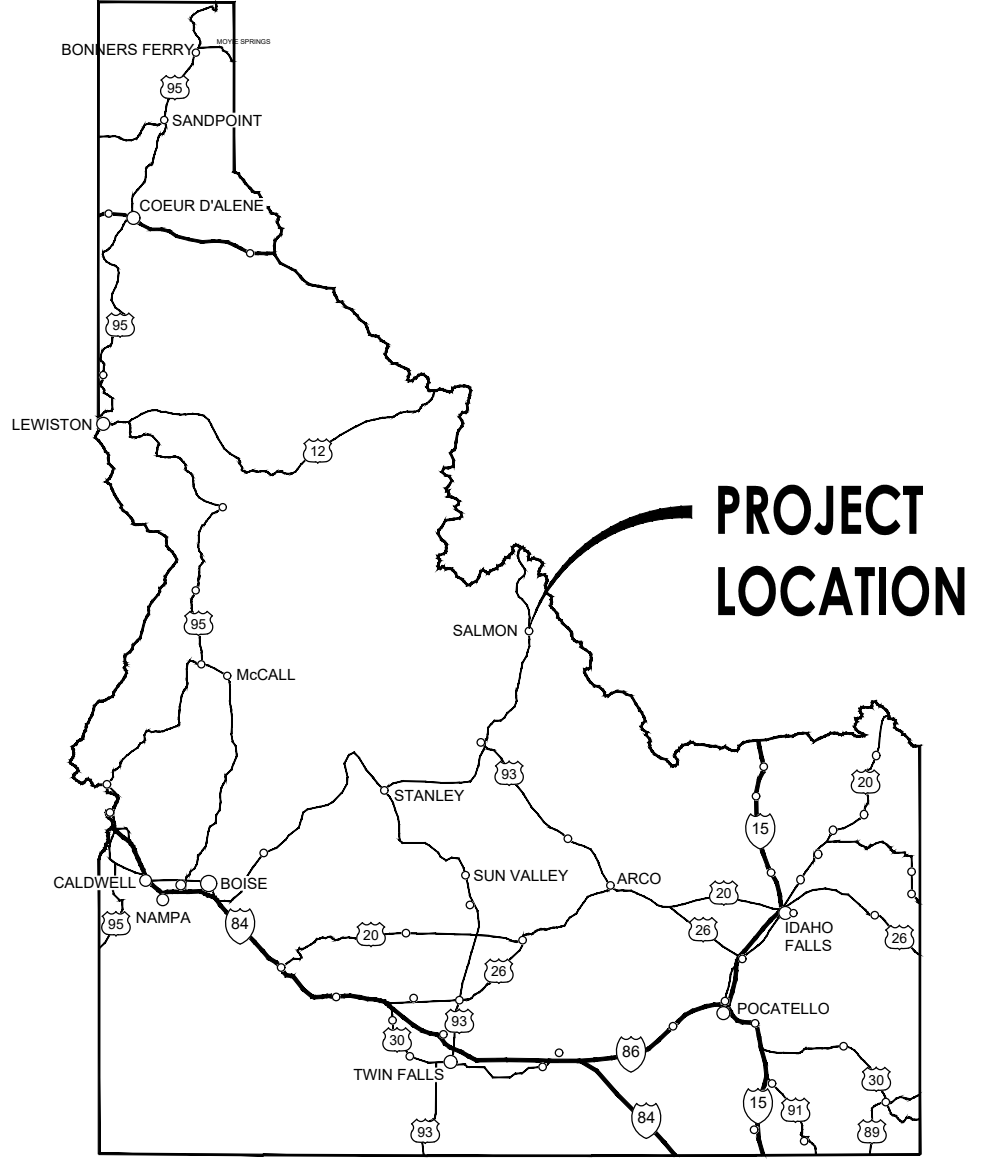
DRAFT
 Not For
 Construction

NO.	REVISIONS	DATE
This document or any part thereof in detail or design concept is the personal property of Keller Associates, Inc. and shall not be copied, in any form without the written authorization of Keller Associates, Inc.		

SALMON, ID

WATER SYSTEM IMPROVEMENTS
 RIVER CROSSINGS
 TITLE SHEET

DRAWN: JPMc	CHECK: MBH
VERIFY SCALE: Scales based on 22"x34" prints.	
1-1/2 Inches	
PROJECT NO. 220107-000	PAGE
SHEET NO.	G-001



OWNER
 CITY OF SALMON
 200 MAIN ST
 SALMON, ID 83467
 CONTACT: CHARLES COCKRELL
 PHONE: 208-756-3214
 EMAIL: SALMONPW@CENTURYTEL.NET

CIVIL ENGINEER
 KELLER ASSOCIATES, INC.
 ADDRESS: 305 NORTH 3rd AVE., SUITE A
 POCATELLO, ID 83201
 CONTACT: MATTHEW B. HILL, P.E.
 PHONE: 208-238-2146
 EMAIL: MHILL@KELLERASSOCIATES.COM



A1 LOCATION MAP
 N.T.S.

A3 VICINITY MAP
 N.T.S.

J:\220107 SALMON WATER IMPROVEMENTS\CAD\3 DESIGN\PLANS\1G-001.DWG LAST SAVED: 3/16/2021 5:08 PM PRINTED: 3/17/2021 11:46 AM

GENERAL NOTES

- THE CITY OF SALMON HAS ADOPTED THE 2020 EDITION OF THE IDAHO STANDARDS FOR PUBLIC WORKS CONSTRUCTION (ISPMC) AND THE STANDARD REVISIONS TO THE 2020 EDITION ISPMC. ALL WORK SHALL BE COMPLETED IN ACCORDANCE WITH THESE STANDARDS UNLESS NOTED OTHERWISE. CONTRACTOR SHALL HAVE A COPY OF THE ISPMC ON SITE AT ALL TIMES DURING CONSTRUCTION.
- EXISTING UNDERGROUND UTILITIES SHOWN ARE SHOWN IN THEIR APPROXIMATE LOCATIONS BASED ON LOCATING SERVICES PROVIDED THROUGH DIGLINE DURING DESIGN. CONTRACTOR SHALL VERIFY LOCATION OF UTILITIES PRIOR TO CONSTRUCTION.
- THE CONTRACTOR SHALL BE FULLY RESPONSIBLE FOR ANY AND ALL DAMAGE TO EXISTING OR CONSTRUCTED UTILITIES, AND SHALL REPAIR DAMAGES IN ACCORDANCE WITH UTILITY OWNER'S REQUIREMENTS AT NO ADDITIONAL COST TO THE PROJECT OWNER. IT SHALL BE THE CONTRACTOR'S RESPONSIBILITY TO COORDINATE AND NOTIFY ALL AFFECTED UTILITY OWNERS. THE OWNER OR ENGINEER WILL NOT MAKE NOTIFICATIONS. **CALL DIG LINE AT 800-342-1585.**
- ALL CONTRACTORS WORKING WITHIN THE PROJECT BOUNDARIES ARE RESPONSIBLE FOR COMPLIANCE WITH ALL APPLICABLE SAFETY LAWS OF ANY JURISDICTIONAL BODY. THE CONTRACTOR SHALL BE RESPONSIBLE FOR ALL BARRICADES, SAFETY DEVICES AND CONTROL OF TRAFFIC WITHIN THE CONSTRUCTION AREA.
- MISCELLANEOUS STRUCTURES SUCH AS FENCES, DRIVEWAYS AND APPROACHES, SIGNS, IRRIGATION AND DRAINAGE FACILITIES, UTILITY POLES, LINE AND APPURTENANCES WHEN NECESSARY TO BE REMOVED OR DISTURBED, SHALL BE REPLACED OR RECONSTRUCTED TO BETTER THAN OR EQUAL THEIR ORIGINAL CONDITION.
- TRAFFIC CONTROL DEVICES SHALL BE IN ACCORDANCE WITH THE CURRENT MANUAL ON UNIFORM TRAFFIC CONTROL DEVICES (MUTCD).
- CONTRACTOR SHALL PROVIDE ONE (1) SET OF CLEAN AS-BUILT DRAWINGS TO PROJECT ENGINEER PRIOR TO PROJECT CLOSEOUT.
- CONTRACTOR SHALL OBTAIN TEMPORARY WORK PERMITS AS NEEDED FROM PRIVATE PROPERTIES ADJOINING THE PROJECT AREA.
- CONTRACTOR SHALL FURNISH ALL CONSTRUCTION STAKING. KNOWN SURVEY CONTROLS ARE SHOWN IN PLANS.
- CONTRACTOR SHALL HIRE A CERTIFIED MATERIALS TESTING FIRM TO PROVIDE ALL TESTING NECESSARY TO COMPLY WITH THE REQUIREMENTS OF THE SPECIFICATIONS AND ISPMC 2020. SUCH TESTS SHALL BE SUBMITTED TO THE ENGINEER AND OWNER WITHIN ONE DAY OF RECEIVING THE TEST RESULTS.
- EXISTING UTILITIES ARE TO REMAIN OPERATIONAL UNTIL THE NEW FACILITIES HAVE BEEN CONSTRUCTED, TESTED, AND APPROVED FOR OPERATION. APPROVAL MUST INCLUDE CONCURRENCE BY THE CITY OF SALMON WATER DEPARTMENT, ENGINEER, AND IDEQ.
- WORK SUBJECT TO APPROVAL BY ANY AGENCY MUST BE INSPECTED AND APPROVED PRIOR TO (A) PLACING OF CONCRETE, (B) PLACING OF AGGREGATE BASE, (C) PLACING OF ASPHALT PAVEMENT, AND (D) BACKFILLING TRENCHES FOR PIPE. WORK DONE WITHOUT SUCH APPROVAL SHALL NOT RELIEVE THE CONTRACTOR FROM THE RESPONSIBILITY OF PERFORMING THE WORK IN AN ACCEPTABLE MANNER.
- WHEN DISCREPANCIES OCCUR BETWEEN SPECIFICATIONS, OR DRAWING SHEETS, THE CONTRACTOR SHALL NOTIFY THE ENGINEER IMMEDIATELY. UNTIMELY NOTIFICATION MAY NEGATE ANY CONTRACTOR'S CLAIM FOR ADDITIONAL COMPENSATION.
- THE CONTRACTOR SHALL BE RESPONSIBLE FOR SECURING SOURCES FOR GRANULAR MATERIALS, WATER, WASTE SITES, AND ANY OTHER MATERIALS SOURCES AS REQUIRED FOR PROJECT COMPLETION.
- THE CONTRACTOR SHALL COORDINATE ALL INSPECTIONS WITH THE ENGINEER AND CITY OF SALMON PERSONNEL. THE ENGINEER AND CITY SHALL BE NOTIFIED TO INSPECT ALL WORK PRIOR TO BACKFILLING. AFTER THE WATER LINE IS INSTALLED AND PRIOR TO PAVING, THE CONTRACTOR SHALL REQUEST A UTILITY WALK-THRU WITH THE CITY AND ENGINEER TO FINALIZE UTILITY WORK.
- WITHIN 2 WEEKS OF FINAL COMPLETION, THE CONTRACTOR SHALL SUBMIT A SET OF AS-BUILT PLANS TO THE ENGINEER.

ROADWAY & STREET NOTES

- EXISTING A.C. PAVING SHALL BE CUT IN A NEAT STRAIGHT LINE AND THE EXPOSED EDGE SHALL BE TACKED WITH EMULSION PRIOR TO PAVING.
- PLANT MIX PAVEMENT SHALL BE SP-2 MIX DESIGN WITH 1/2-IN MAXIMUM AGGREGATE SIZE AND PG 52-40 ASPHALT BINDER, OR APPROVED EQUAL. SUBMIT MIX DESIGN FOR APPROVAL.
- ALL INDIVIDUALS WORKING WITHIN THE CITY OF SALMON ROAD RIGHT-OF-WAY SHALL WEAR A CLASS 2 SAFETY CLOTHING, CLASS 3 RECOMMENDED FOR NIGHT USE.

SURVEY MONUMENTS

- CONTRACTOR SHALL REFERENCE ALL PUBLIC AND PRIVATE LAND SURVEY MONUMENTS THAT WILL BE DISTURBED BY CONSTRUCTION ACTIVITIES PRIOR TO DISTURBING.
- REESTABLISH SUCH MONUMENTS AS PART OF THE SURVEY WORK FOR THIS PROJECT BEFORE PROJECT COMPLETION.
- SECTION CORNER AND QUARTER CORNER MONUMENTS RESET AFTER CONSTRUCTION SHALL INCLUDE CORNER PERPETUATIONS AND FILING WITH THE COUNTY.
- SIXTEENTH CORNERS THAT ARE DISTURBED AND RESET AND HAVE EXISTING CORNER PERPETUATION FILED WITH THE COUNTY SHALL HAVE NEW PERPETUATION RECORDS FILED AFTER THE CORNER HAS BEEN RESET.
- PERFORM ALL MONUMENT WORK IN ACCORDANCE WITH TITLE 55, CHAPTER 16 OF THE IDAHO STATE CODE.
- PERFORM ALL CORNER REESTABLISHMENT AND CORNER PERPETUATION FILING WORK IN ACCORDANCE WITH STANDARD SURVEYING PRACTICES UNDER THE RESPONSIBLE CHARGE OF A PROFESSIONAL LAND SURVEYOR DULY AND PROPERLY REGISTERED IN THE STATE OF IDAHO.

CASING NOTES

- THE CASING PIPE SHALL BE INSTALLED BY PERSONS PROPERLY QUALIFIED TO PERFORM SAID WORK AND SHALL BE IN CONFORMANCE WITH THE MANUFACTURER'S RECOMMENDATIONS AS APPROVED BY THE ENGINEER.
- CASING SHALL BE HDPE DR17 PIPE WHERE SPECIFIED, AND CONFORM TO PROVISIONS OF AWWA SPECIFICATION C906 LATEST REVISION. MATERIAL SHALL HAVE A MINIMUM DESIGNATION OF PE4710. SUBMIT PRODUCT DATA FOR ENGINEER REVIEW.
- ALL HDPE PIPE SHALL BE JOINED TO ITSELF BY THE HEAT FUSION PROCESS WHICH PRODUCES HOMOGENEOUS, SEALED, LEAK TIGHT JOINTS.
- ALL HDPE FUSION EQUIPMENT OPERATORS SHALL BE QUALIFIED TO THE PROCEDURE USED TO PERFORM PIPE JOINING. FUSION EQUIPMENT OPERATORS SHALL HAVE CURRENT (WITHIN THE LAST TWO YEARS), FORMAL TRAINING ON ALL FUSION EQUIPMENT EMPLOYED ON THE PROJECT.
- CASING SHALL HAVE A MINIMUM OF 5 FT OF COVER UNDER THE RIVER CHANNEL.
- CASINGS SHALL BE BEDDED WITH 1" CLEAN DRAIN ROCK, 12" BELOW TO 12" ABOVE THE CASING. EXISTING NATIVE MATERIAL SHALL BE USED TO FINISH BACKFILLING UP TO THE NATURAL RIVER CHANNEL.
- CONTRACTOR RESPONSIBLE FOR ANY DEWATERING NECESSARY TO INSTALL THE CASINGS. CASINGS SHALL HAVE WATERTIGHT CAPS INSTALLED ON BOTH ENDS TO PREVENT FROM FILLING WITH WATER.
- CONTRACTOR RESPONSIBLE FOR ANY PIPE SADDLES OR WEIGHTS REQUIRED TO PREVENT FLOATATION OF THE CASING DURING INSTALLATION AND BACKFILL.

STORM AND EROSION CONTROL NOTES

- THE CONTRACTOR MUST USE APPROPRIATE STORM WATER BEST MANAGEMENT PRACTICE FOR THE PROJECT.
- ON SLOPING AREAS THE CONTRACTOR SHALL TAKE PRECAUTIONS TO MITIGATE ANY POSSIBLE EROSION PROBLEMS IN TRENCHES DUE TO STORM WATER THAT MIGHT OCCUR DURING OR AFTER CONSTRUCTION AS DIRECTED OR APPROVED BY ENGINEER.
- DURING CONSTRUCTION THE CONTRACTOR IS FULLY RESPONSIBLE FOR INTERIM PROVISIONS FOR PASSAGE OF IRRIGATION AND STORM WATER. NO SUPPLEMENTAL COMPENSATION WILL BE MADE FOR WET CONDITIONS OR FLOW DIVERSIONS.
- CONTRACTOR IS RESPONSIBLE FOR KEEPING ROADWAYS FREE AND CLEAR OF ALL CONSTRUCTION DEBRIS AND DIRT TRACKED DURING CONSTRUCTION.

DEWATERING AND GROUNDWATER DISPOSAL NOTES

- DUE TO THE PROXIMITY OF PORTIONS OF THIS PROJECT TO THE SALMON RIVER, DEWATERING IS TO BE EXPECTED DURING CONSTRUCTION OF THIS PROJECT. ANY COSTS INCURRED SHALL BE CONSIDERED INCIDENTAL TO THE WORK, AND NO ADDITIONAL PAYMENT SHALL BE MADE.
- ANY DISCHARGE PERMITS REQUIRED SHALL BE OBTAINED BY THE CONTRACTOR.
- CONTRACTOR MUST COMPLY WITH IDAHO BEST MANAGEMENT PRACTICES FOR CONSTRUCTION AND SWPPP. GROUNDWATER CONTAINING TURBIDITY OR SEDIMENT SHALL BE DISCHARGED INTO A SEDIMENT POND, THROUGH A FILTER FABRIC, STRAW BALES, OR OTHER SUITABLE MEANS OF REMOVING SEDIMENT. IT CAN THEN BE DISCHARGED TO EXISTING ROAD DRAIN DITCHES. CARE SHALL BE TAKEN TO AVOID EROSION OF DITCHES. GROUNDWATER DEWATERING WILL BE CONSIDERED INCIDENTAL TO THE INSTALLATION OF PIPELINES; NO SEPARATE PAYMENT WILL BE MADE FOR DEWATERING.

SHEET INDEX

G-001 - TITLE SHEET
G-002 - GENERAL NOTES & SHEET INDEX
G-003 - SYMBOLS & LINE LEGEND
G-004 - SURVEY CONTROL & PROJECT OVERVIEW
C-101 - RIVER CROSSING - EAST SIDE OF BRIDGE
C-102 - RIVER CROSSING - WEST SIDE OF RIVER



**DRAFT
Not For
Construction**

NO.	REVISIONS	DATE

This document or any part thereof in detail or design concepts is the personal property of Keller Associates, Inc. and shall not be copied, in any form, without the written authorization of Keller Associates, Inc.

SALMON, ID

**WATER SYSTEM IMPROVEMENTS
RIVER CROSSINGS**

GENERAL NOTES & SHEET INDEX

DRAWN: JPMc CHECK: MBH
VERIFY SCALE: Scales based on 22"x34" prints.
1-1/2 Inches

PROJECT NO. 220107-000	PAGE
SHEET NO. G-002	

J:\220107 SALMON WATER IMPROVEMENTS\CAD\3 DESIGN\PLANS-1\G-002.DWG
LAST SAVED: 3/12/2021 4:25 PM
PRINTED: 3/17/2021 11:46 AM

J:\20107 SALMON WATER IMPROV. CAD\3. DESIGN\PLANS-1\G-003.DWG LAST SAVED: 2/26/2021 1:03 PM PRINTED: 3/17/2021 11:46 AM

EXISTING TOPOGRAPHY

	TOPOGRAPHIC CONTOUR
	EDGE OF GRAVEL
	EDGE OF PAVEMENT
	CURB & GUTTER, SIDEWALK & DROP INLET
	FENCE (BARBED WIRE OR OTHER WITH GATES)
	FENCE (CHAINLINK WITH GATE)
	DITCH FLOWLINE
	TEST PIT
	SIGN
	BUILDING OR STRUCTURE

PROPERTY & CONTROL

	SURVEY CONTROL POINT
	BENCHMARK
	FOUND BRASS CAP
	FOUND ALUMINUM CAP
	FOUND 5/8" STEEL PIN
	SET 5/8" STEEL PIN W/CAP
	FOUND 1/2" STEEL PIN
	SET 1/2" STEEL PIN W/CAP
	FOUND PK NAIL
	SET PK NAIL
	CALCULATED POINT
	WITNESS CORNER
	QUARTER SECTION - NOT FOUND
	CENTER SECTION
	SECTION CORNER - FOUND

EXISTING UTILITY

	WATERLINE & VALVE
	SANITARY SEWER LINE & MANHOLE
	SANITARY SEWER SERVICE & CLEANOUT
	PRESSURE SEWER LINE & VALVE VAULT
	STORM DRAIN LINE & MANHOLE
	PRESSURE IRRIGATION & VALVE
	GRAVITY IRRIGATION & MANHOLE
	OVERHEAD POWER LINE & POWER POLE
	UNDERGROUND POWER LINE
	SIGNAL POLE
	LIGHT POLE
	NATURAL GAS LINE
	FIBER OPTIC LINE
	TELEPHONE LINE & RISER
	CABLE LINE & RISER

PROPOSED GRADING

	TOPOGRAPHIC CONTOUR
	RIDGELINE
	DRAINAGE ARROW & SLOPE
	SPOT ELEVATION
	SWALE FLOWLINE
	DAYLIGHT - CUT LINE
	DAYLIGHT - FILL LINE

PROPOSED MISCELLANEOUS

	CLEARING AND GRUBBING
	CONSTRUCTION PHASE LIMITS
	DEMOLITION/ABANDON

PROPOSED SITE

	BUILDING OR STRUCTURE
	CONCRETE
	ASPHALT
	GRAVEL SURFACE
	GRAVEL SECTION
	LANDSCAPE ROCK

PROPOSED SITE (CONT.)

	FENCE (BARBED WIRE OR OTHER WITH GATES)
	FENCE (CHAINLINK WITH GATE)
	EDGE OF PAVEMENT
	EDGE OF GRAVEL
	SIGN
	6" VERTICAL CURB, GUTTER, SIDEWALK & INLET
	6" VERTICAL CUT CURB & GUTTER
	6" REVERSE CURB & GUTTER
	6" REVERSE CUT CURB & GUTTER
	IMBEDDED CURB

PROPOSED UTILITY

	FLANGED
	MECHANICAL JOINT
	FITTING TYPES
	BEND
	REDUCING TEE
	TEE
	REDUCER
	FLANGE TO MECHANICAL JOINT COUPLING
	CROSS
	CAP W/BLIND FLANGE
	CHECK VALVE
	GATE VALVE
	BUTTERFLY VALVE
	BLOW-OFF VALVE
	RESTRAINED FITTING
	WATER SERVICE LINE & METER
	FIRE HYDRANT
	8" FIRE
	8" WATERLINE
	MONITORING WELL
	LOCATION WIRE BOX
	NON-FREEZE YARD HYDRANT
	8"PI PRESSURE IRRIGATION, TEE & GATE VALVE
	2"PI PRESSURE IRRIGATION SERVICE
	8"GI< GRAVITY IRRIGATION & STRUCTURE

PROPOSED UTILITY (CONT.)

	8"SS< SANITARY SEWER & MANHOLE
	4"SS< SANITARY SEWER SERVICE & CAP
	4"SS< SANITARY SEWER SERVICE & CLEANOUT
	8"PS< PRESSURE SEWER & VALVE VAULT
	18"SD< STORM DRAIN LINE, INLET & CATCH BASIN
	12"SD< STORM DRAIN LINE & MANHOLE W/ VENTED LID
	JOINT TRENCH IN PROFILE
	CABLE & TELEPHONE RISERS
	JOINT TRENCH & DEVICE
	JUNCTION BOX & DUCT BANK
	NG< NG NATURAL GAS LINE & METER
	NG< NG NATURAL GAS LINE & RISER
	NG< NG NATURAL GAS LINE & VALVE
	UGP UNDERGROUND POWER
	OHP OVERHEAD POWER & POLE
	LIGHT POLE
	T TELEPHONE LINE & RISER
	FO FIBER OPTIC LINE & VAULT
	T/D TELEPHONE DATA LINE
	CABLE & TV RISER

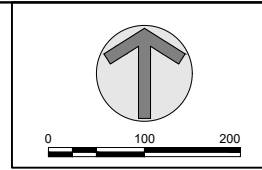
DRAFT
 Not For
 Construction

NO.	REV X	00-00-00	DATE

This document or any part thereof in detail or design concept is the personal property of Keller Associates, Inc. and shall not be copied in any form without the written authorization of Keller Associates, Inc.

SALMON, ID

WATER SYSTEM IMPROVEMENTS
 RIVER CROSSINGS
 SYMBOLS & LINE LEGEND



NO.	REVISIONS	DATE
This document or any part thereof in detail or design concept is the personal property of Keller Associates, Inc. and shall not be copied in any form without the written authorization of Keller Associates, Inc.		

SALMON, ID

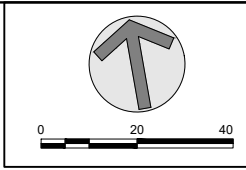
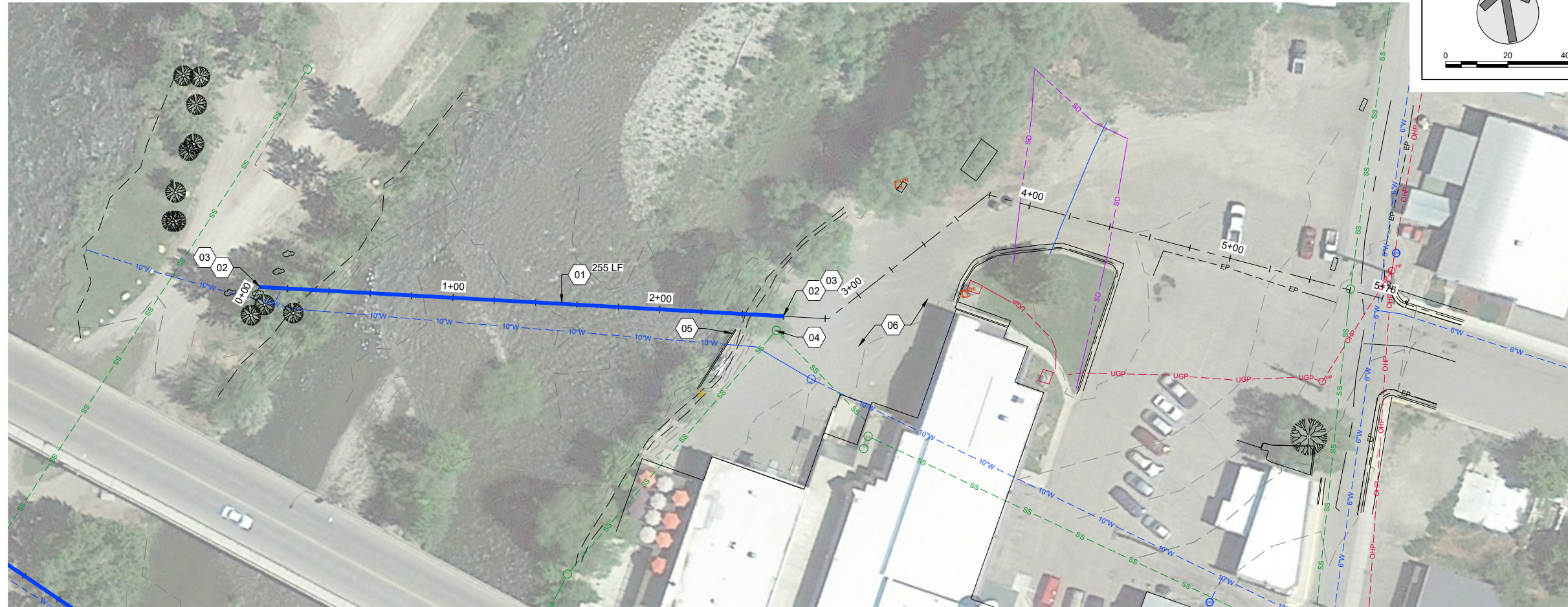
WATER SYSTEM IMPROVEMENTS
 PHASE 1
 SURVEY CONTROL &
 PROJECT OVERVIEW

SURVEY MONUMENT PERPETUATION NOTE:

ALL PROPERTY AND LAND CORNER MONUMENTS SHALL BE SAVED AND PROTECTED IN ACCORDANCE WITH IDAHO CODE 55-1613 AND 54-1234. MONUMENTS INCLUDE, BUT ARE NOT LIMITED TO LAND AND PROPERTY CORNERS, PUBLIC LAND SURVEY CORNERS, SUBDIVISION, TRACT, OR OTHER LAND BOUNDARY CORNER. WHEN SUCH MONUMENTS MAY BE DESTROYED BY CONSTRUCTION. THE MONUMENT SHALL BE REFERENCED UNDER THE DIRECTION OF AN IDAHO PROFESSIONAL LAND SURVEYOR PRIOR TO CONSTRUCTION. ALL SUCH MONUMENTS SHALL BE RE-ESTABLISHED AFTER CONSTRUCTION BY AN IDAHO PROFESSIONAL SURVEYOR AND CORNER RECORDS FILED PER IDAHO STATE CODE.

POINT	NORTHING	EASTING	ELEV.	DESCRIPTION
24	1279729.6480	1667356.5060	3939.52	BRCAPF ITD 3.5 IN.
26	1279807.5640	1667270.9360	3944.54	BRCAPF 3.5IN M292 RESET
127	1279559.4830	1667747.6890	3940.06	BARFFV YPC 5080
128	1279731.5530	1667643.0240	3936.77	BARFFV YPC 5080
129	1279647.5450	1667796.0800	3940.01	BARFFV YPC 5080
300	1279819.9670	1667273.5340	3934.30	BARFFV YPC LS5080
301	1279948.9820	1667390.7870	3933.28	BARFFV YPC LS5080
302	1279923.2930	1667437.8980	3931.60	BARFFV N.C.
306	1279831.8900	1667621.7900	3934.45	BARFFV YPC LS5080
307	1279827.3370	1667643.2990	3934.77	BARFFV YPC LS5080
308	1279760.2960	1667621.0660	3937.16	BARFFV YPC LS5080
309	1279746.1700	1667615.8430	3936.21	BARFFV YPC LS5080

J:\220107 SALMON WATER IMPROV. DESIG. CAD\3. DESIGN\3. DESIGN\PLANS-RIVER CROSSINGS.DWG LAST SAVED: 3/17/2021 11:44 AM PRINTED: 3/17/2021 11:46 AM



- ### GENERAL SHEET NOTES
- RE: G-002 FOR GENERAL NOTES.
 - RETAIN AND PROTECT ALL EXISTING UTILITIES.
 - CONTRACTOR RESPONSIBLE FOR IN-KIND SURFACE RESTORATION FOR AREAS DISTURBED DURING CONSTRUCTION.
 - INSTALL 4' TALL BLUE FIBERGLASS WITNESS POST MARKED WATER AT EACH END OF CASING.

- ### SHEET KEYNOTES
- 24" HDPE DR17 CASING
 - WATERTIGHT CAP
 - INSTALL 4' TALL BLUE FIBERGLASS WITNESS POST MARKED WATER AT EACH END OF CASING.
 - EXISTING MANHOLE, RETAIN & PROTECT
 - EXISTING CONCRETE RETAINING WALL, RETAIN & PROTECT
 - EXISTING GRAVEL PARKING AREA, RESTORE UPON COMPLETION

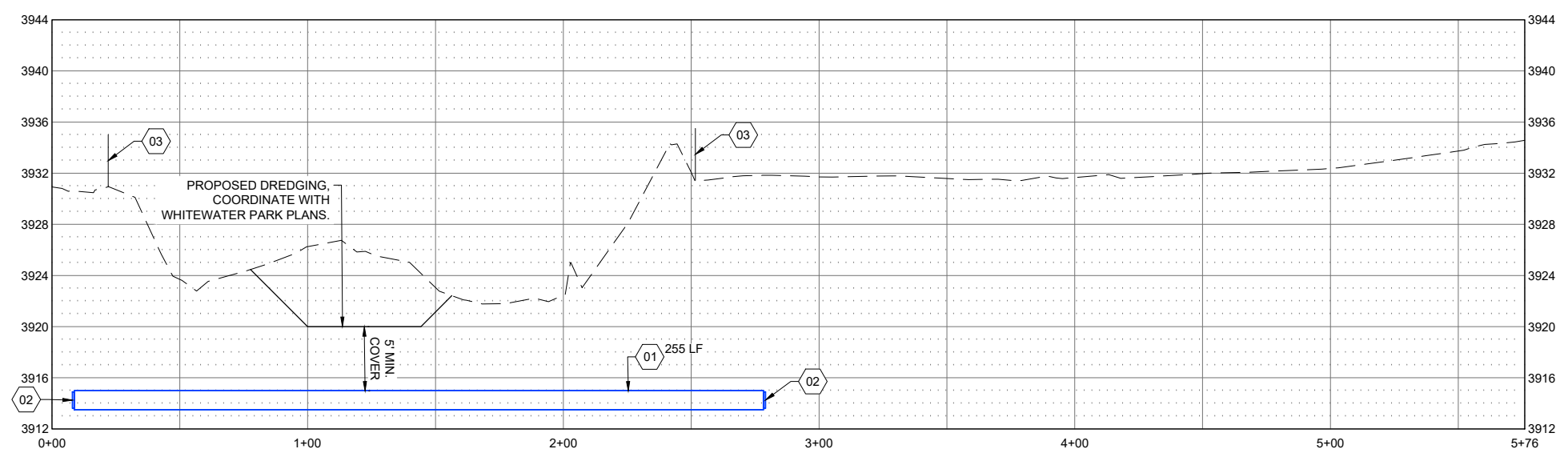
KELLER ASSOCIATES
 305 North 3rd Avenue, Suite A
 Pocatello, Idaho 83201
 (208) 238-2146

DRAFT
 Not For
 Construction

NO.	REVISIONS	DATE
This document or any part thereof in detail or design concept is the personal property of Keller Associates, Inc. and shall not be copied, in any form without the written authorization of Keller Associates, Inc.		

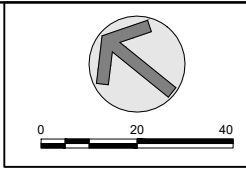
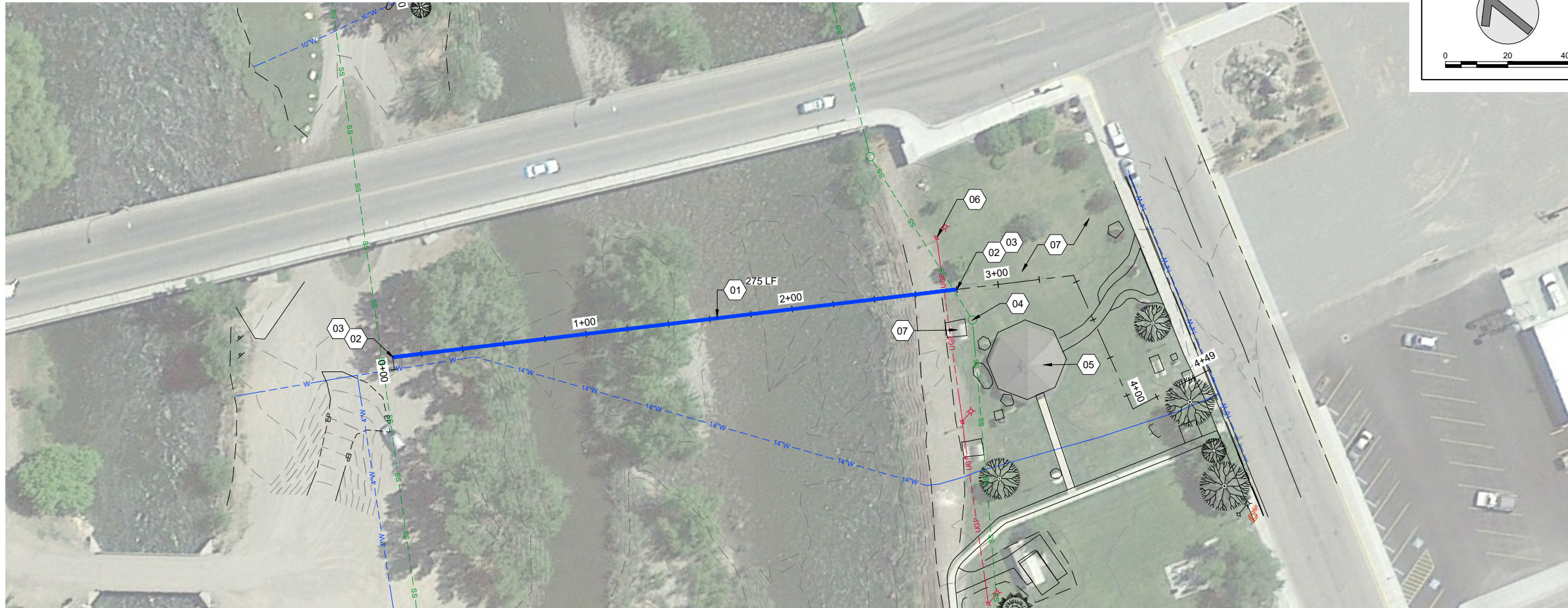
SALMON, ID

WATER SYSTEM IMPROVEMENTS
RIVER CROSSINGS
RIVER CROSSING - EAST SIDE OF
BRIDGE



DRAWN: VT CHECK: MBH
 VERIFY SCALE: Scales based on 22"x34" prints.
 1-1/2 Inches
 PROJECT NO. 220107-000 PAGE
 SHEET NO. C-101

J:\220107 SALMON WATER IMPROV. CAD\3. DESIGN\0. PLANS-1\RIVER CROSSINGS.DWG LAST SAVED: 3/17/2021 11:44 AM PRINTED: 3/17/2021 11:47 AM



GENERAL SHEET NOTES

1. RE: G-002 FOR GENERAL NOTES.
2. RETAIN AND PROTECT ALL EXISTING UTILITIES.
3. CONTRACTOR TO REPAIR SPRINKLER LINES AND IRRIGATION SYSTEM COMPONENTS DAMAGED DURING CONSTRUCTION.
4. CONTRACTOR RESPONSIBLE FOR IN-KIND SURFACE RESTORATION FOR AREAS DISTURBED DURING CONSTRUCTION.
5. PRIOR TO THE REMOVAL OF ANY TREES, CONTRACTOR TO COORDINATE WITH CITY AND ENGINEER FOR APPROVAL.

SHEET KEYNOTES

- 01 24" HDPE DR17 CASING
- 02 WATERTIGHT CAP
- 03 INSTALL 4' TALL BLUE FIBERGLASS WITNESS POST MARKED WATER AT EACH END OF CASING.
- 04 EXISTING MANHOLE, RETAIN & PROTECT
- 05 EXISTING PAVILION, RETAIN & PROTECT
- 06 EXISTING LIGHT POLE, RETAIN & PROTECT
- 07 EXISTING CONCRETE PAD & PICNIC TABLE, RETAIN & PROTECT
- 08 EXISTING GRASS AREA, RESTORE WITH SOD UPON COMPLETION.

KELLER ASSOCIATES
 305 North 3rd Avenue, Suite A
 Pocatello, Idaho 83201
 (208) 238-2146

DRAFT
 Not For
 Construction

NO.	REVISIONS	DATE
This document or any part thereof in detail or design concept is the personal property of Keller Associates, Inc. and shall not be copied, in any form without the written authorization of Keller Associates, Inc.		

SALMON, ID

**WATER SYSTEM IMPROVEMENTS
 RIVER CROSSINGS
 RIVER CROSSING - WEST SIDE OF RIVER**

DRAWN: VT CHECK: MBH
 VERIFY SCALE: Scales based on 22"x34" prints.
 PROJECT NO. 220107-000 PAGE
 SHEET NO. C-102

