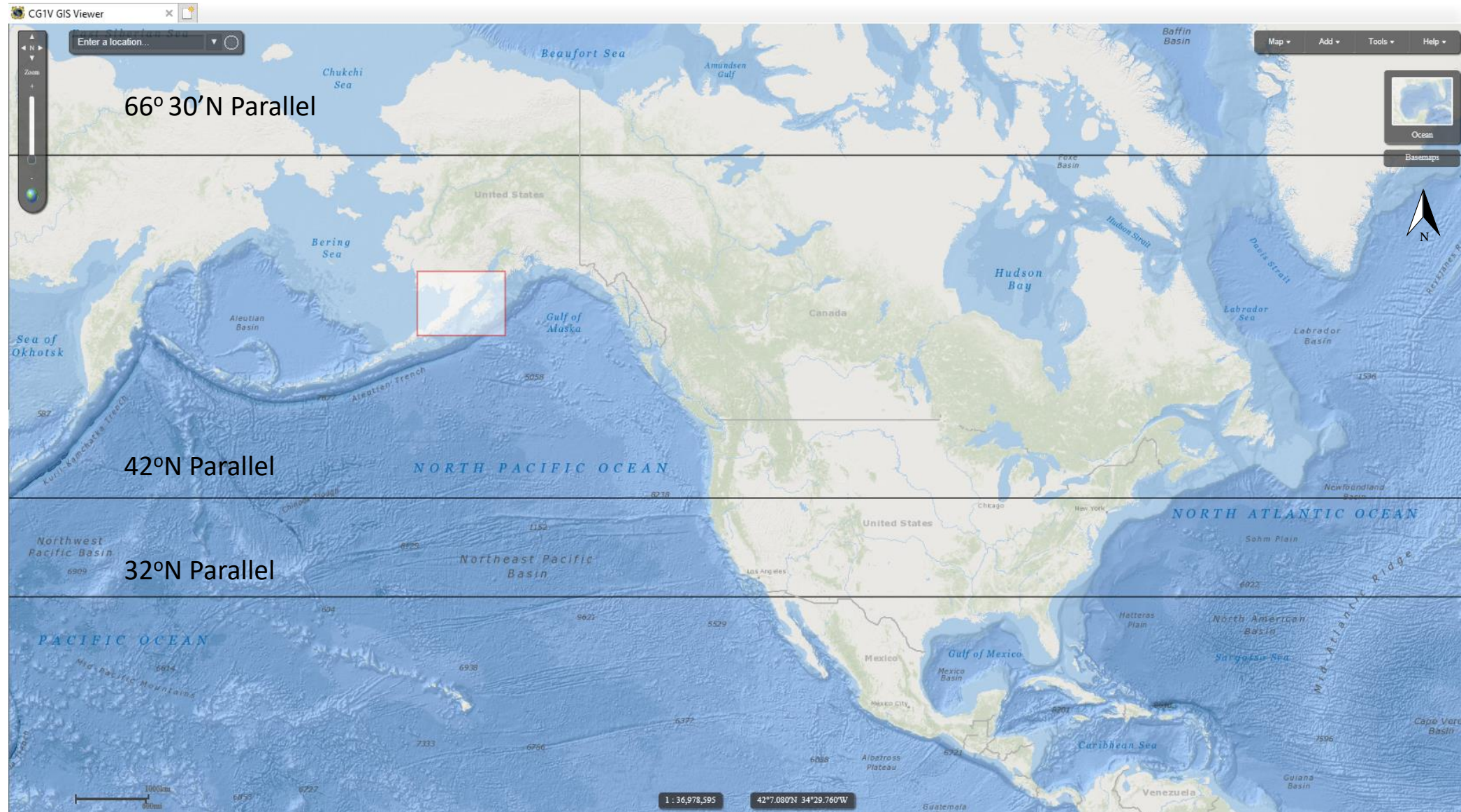


No part of a report of a marine casualty investigation shall be admissible as evidence in any civil or administrative proceeding, other than an administrative proceeding initiated by the United States. 46 U.S.C. §6308.

Map of United States Relative to Alaskan Peninsula and Kodiak Island

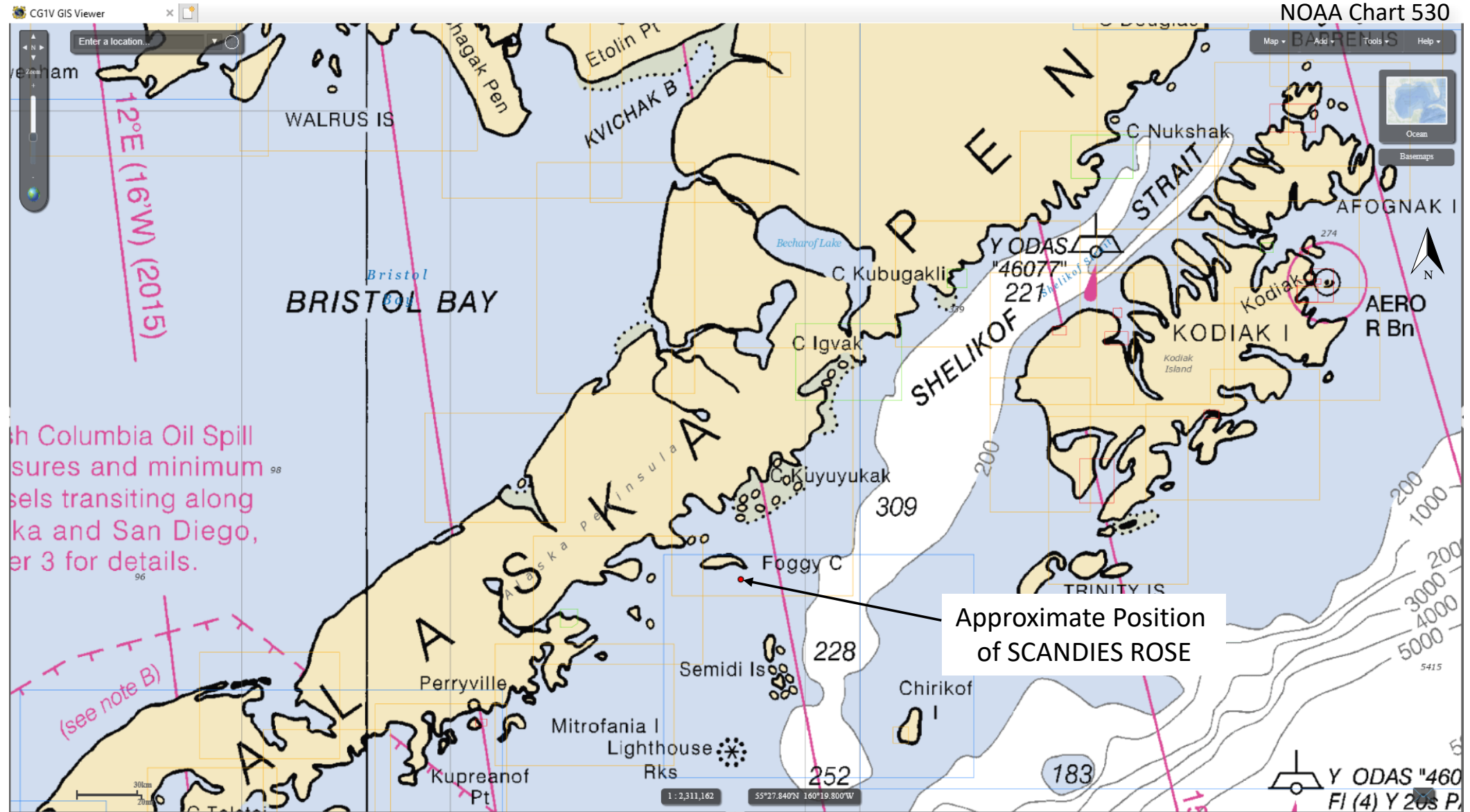


No part of a report of a marine casualty investigation shall be admissible as evidence in any civil or administrative proceeding, other than an administrative proceeding initiated by the United States. 46 U.S.C. §6308.

Sutwik Island and Wreckage of SCANDIES ROSE

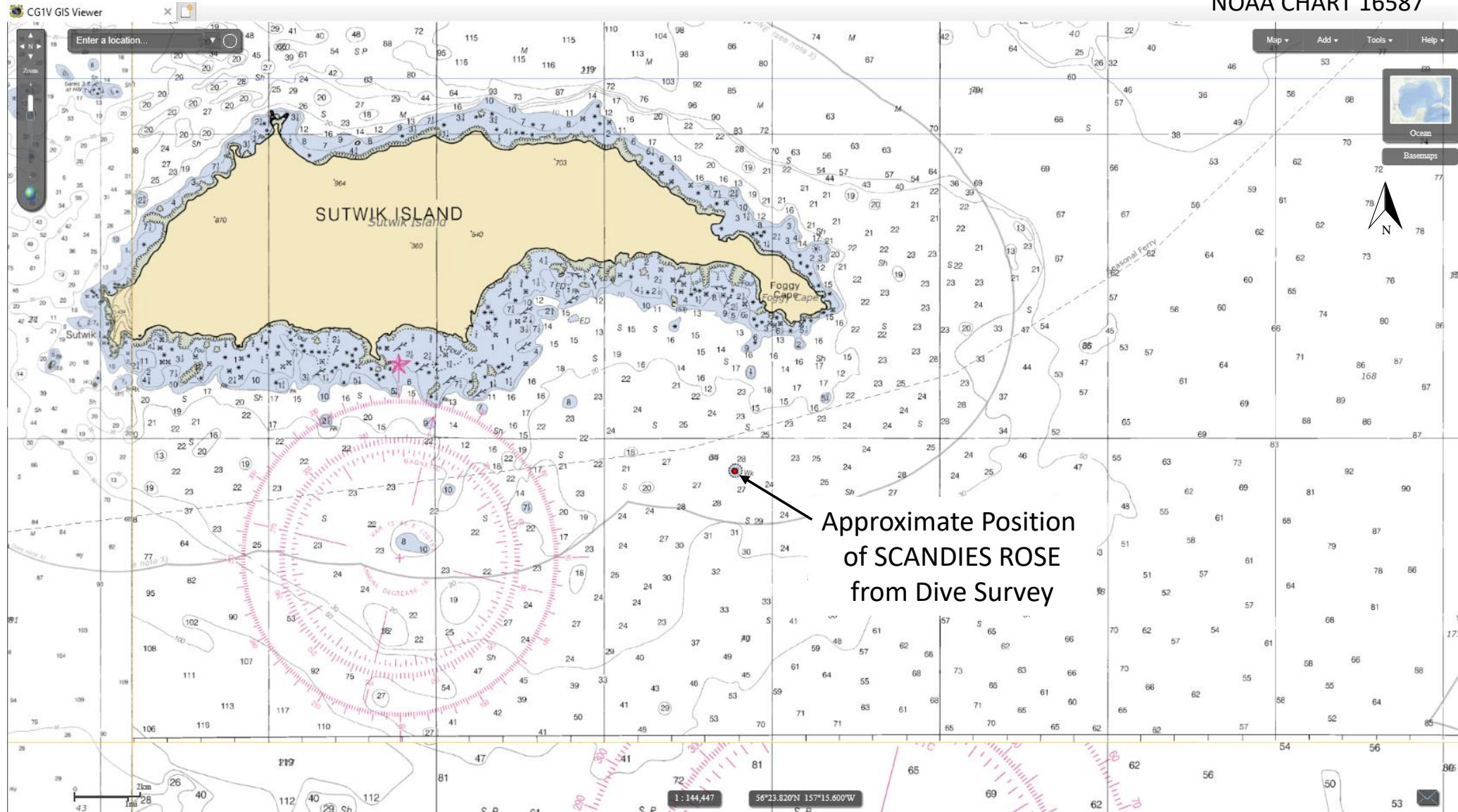


Position Found of SCANDIES ROSE



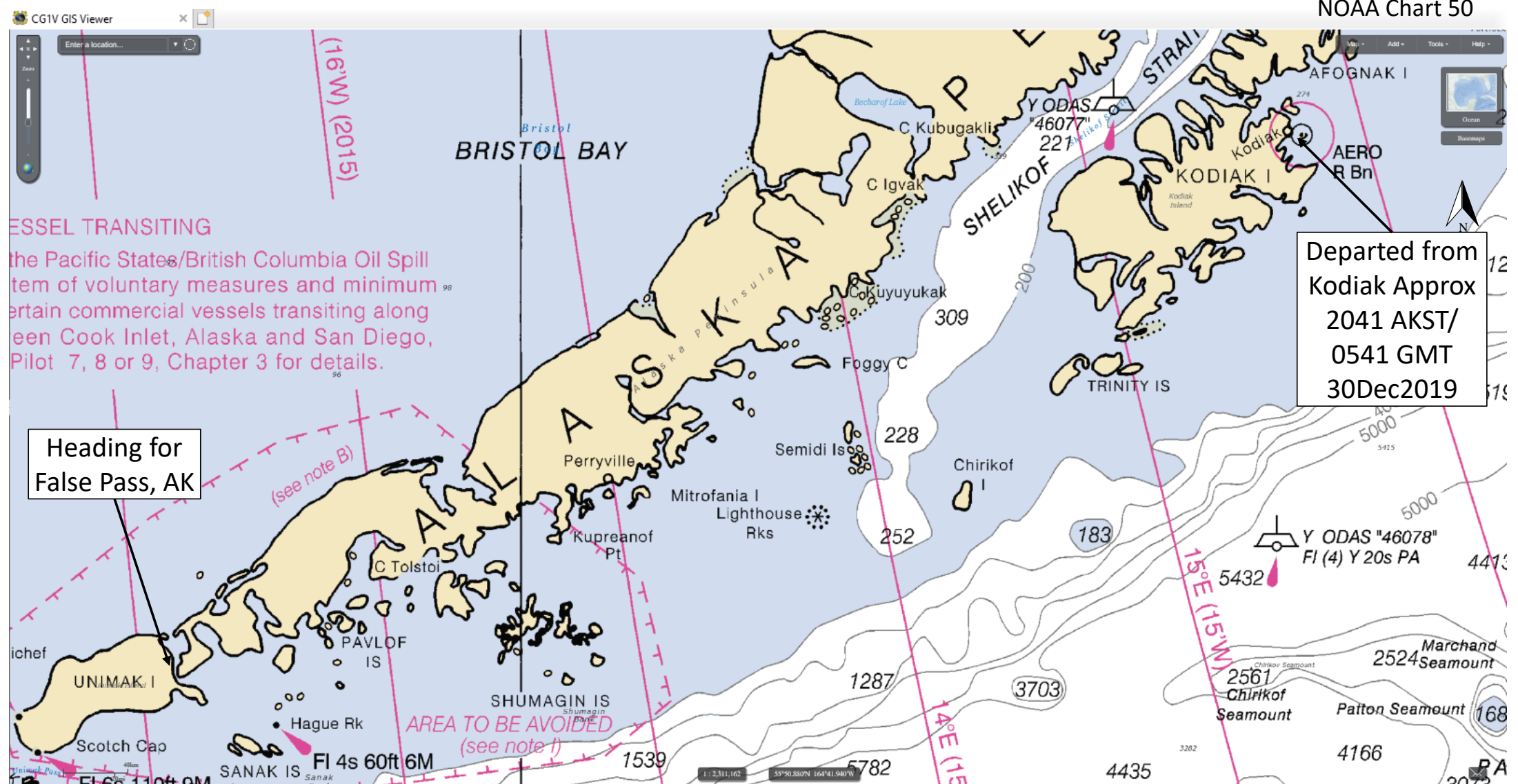
SCANDIES ROSE Wreckage Location

NOAA CHART 16587

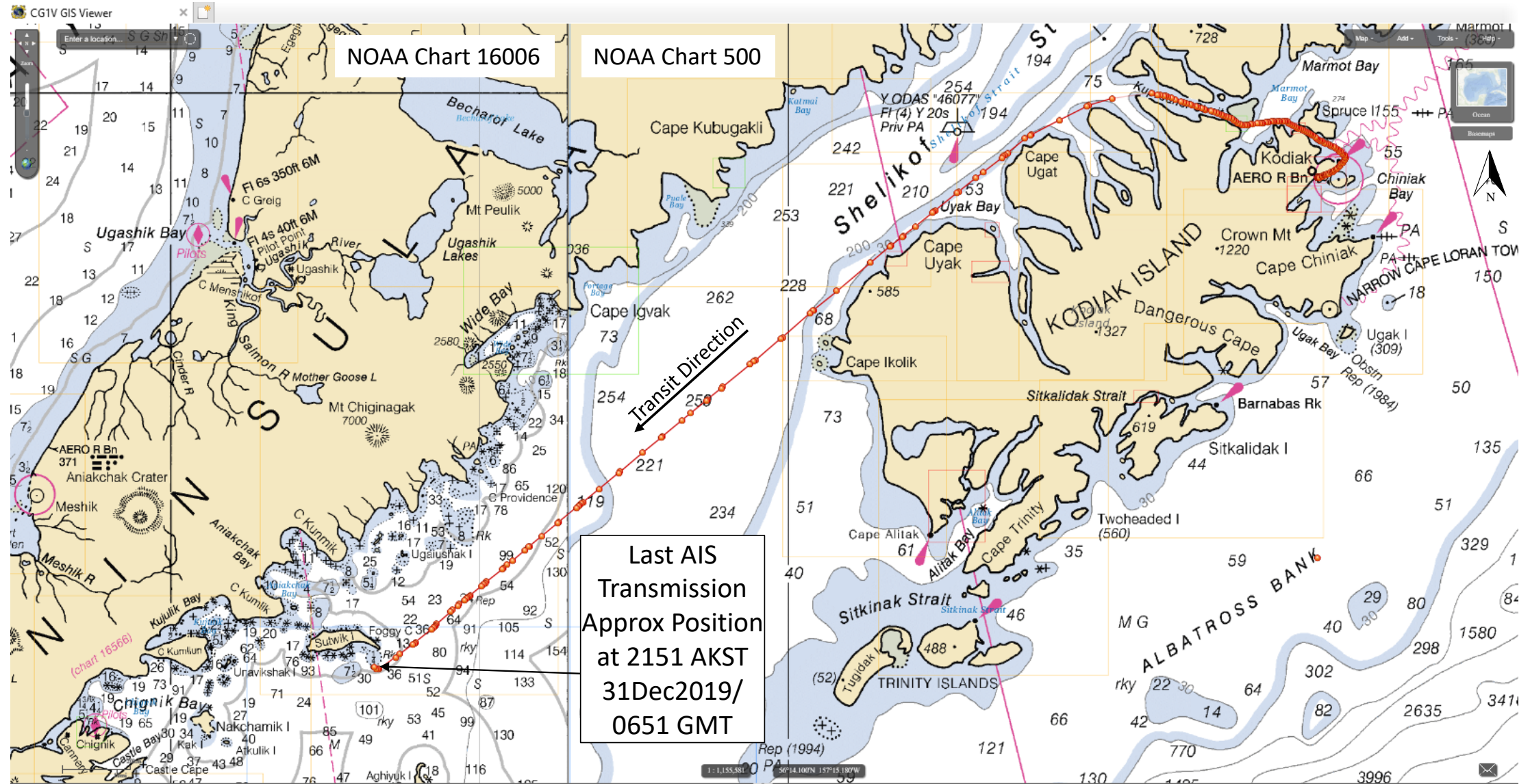


Vessel AIS Plots

SCANDIES ROSE Departure and Intentions



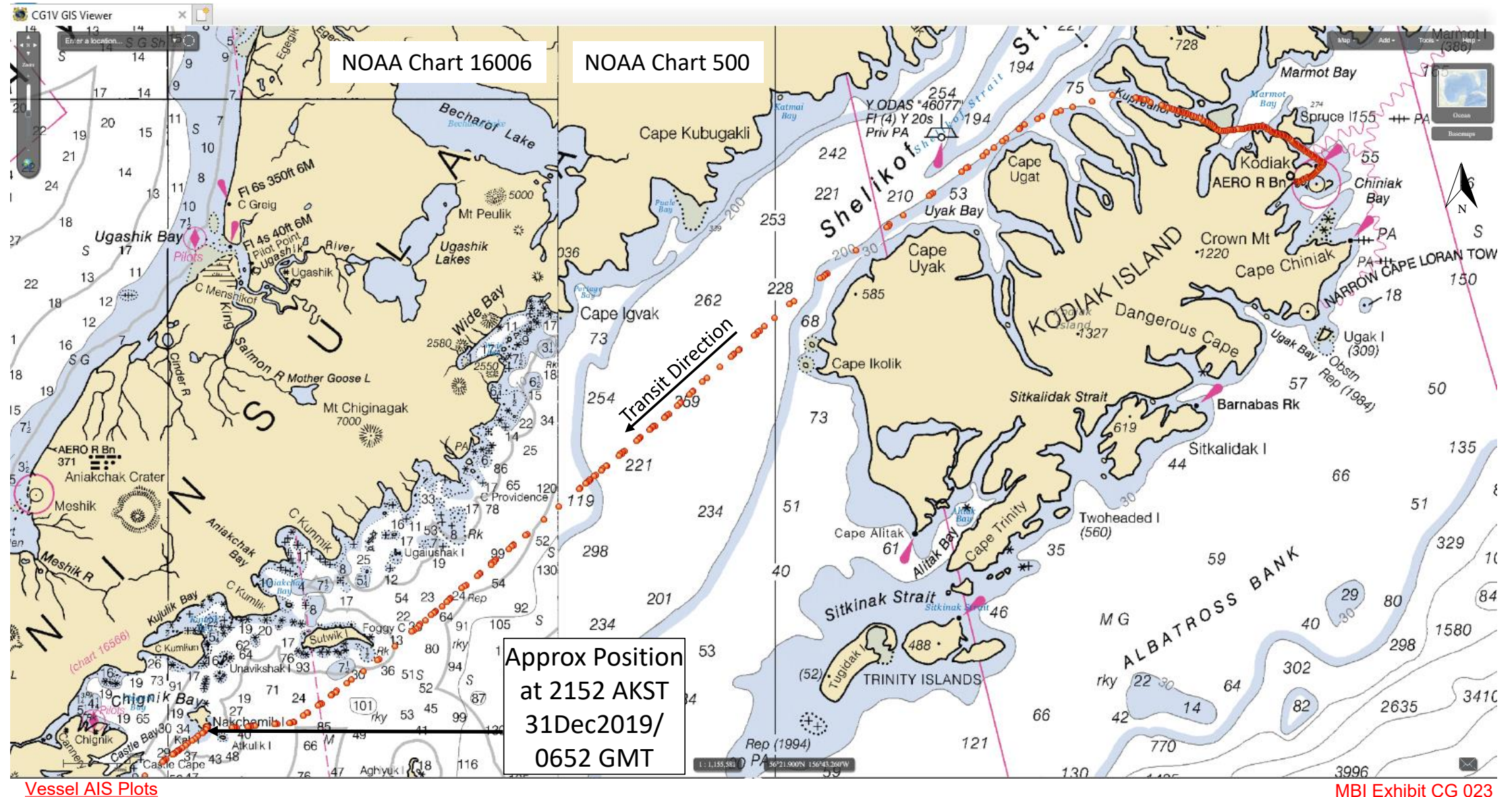
SCANDIES ROSE AIS Data and Interpolated Track



Vessel AIS Plots

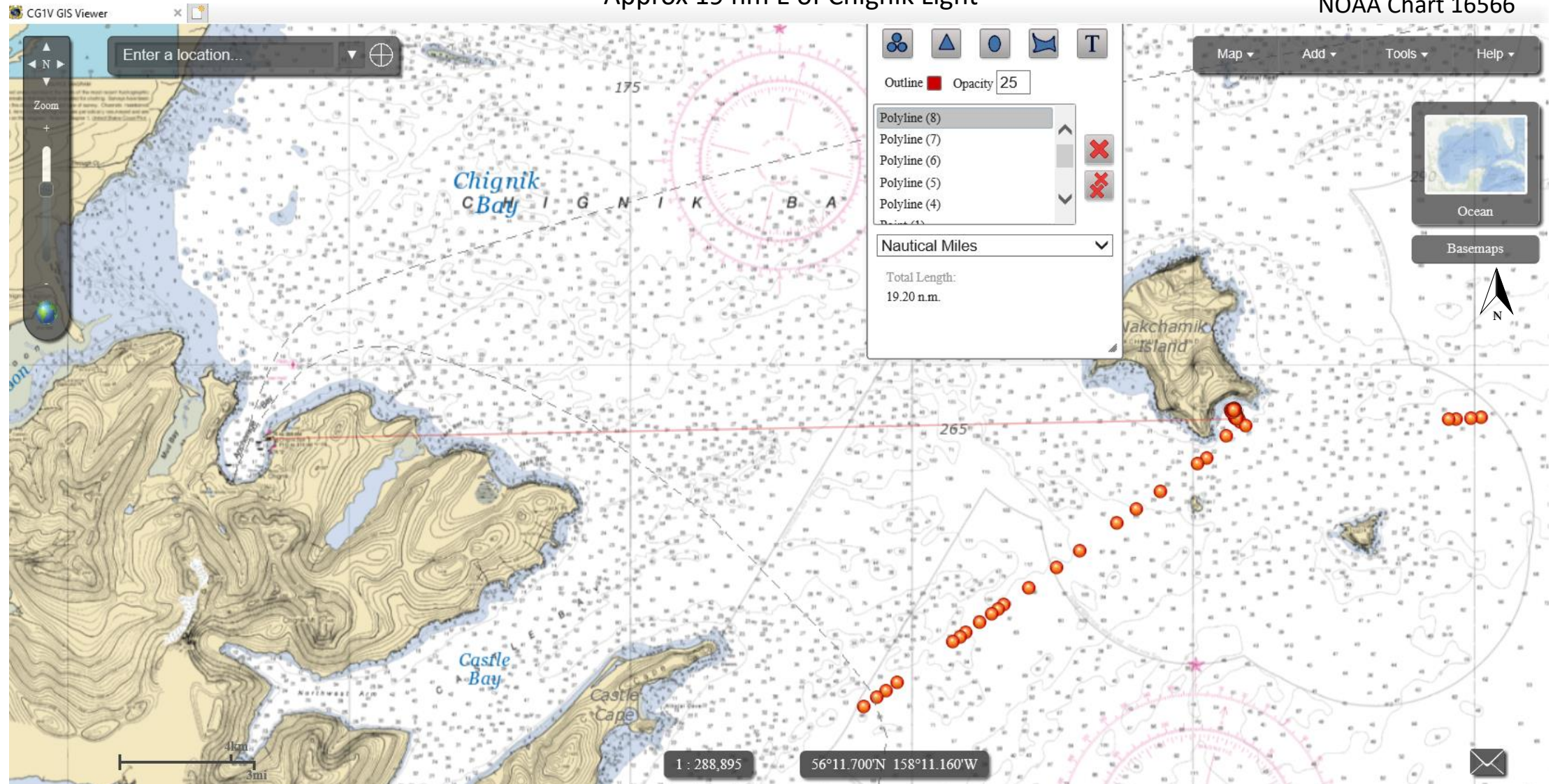
MBI Exhibit CG 023
Page 7 of 17

RUFF & REDDY AIS Data 30Dec2019 to 01Jan2020 (GMT)

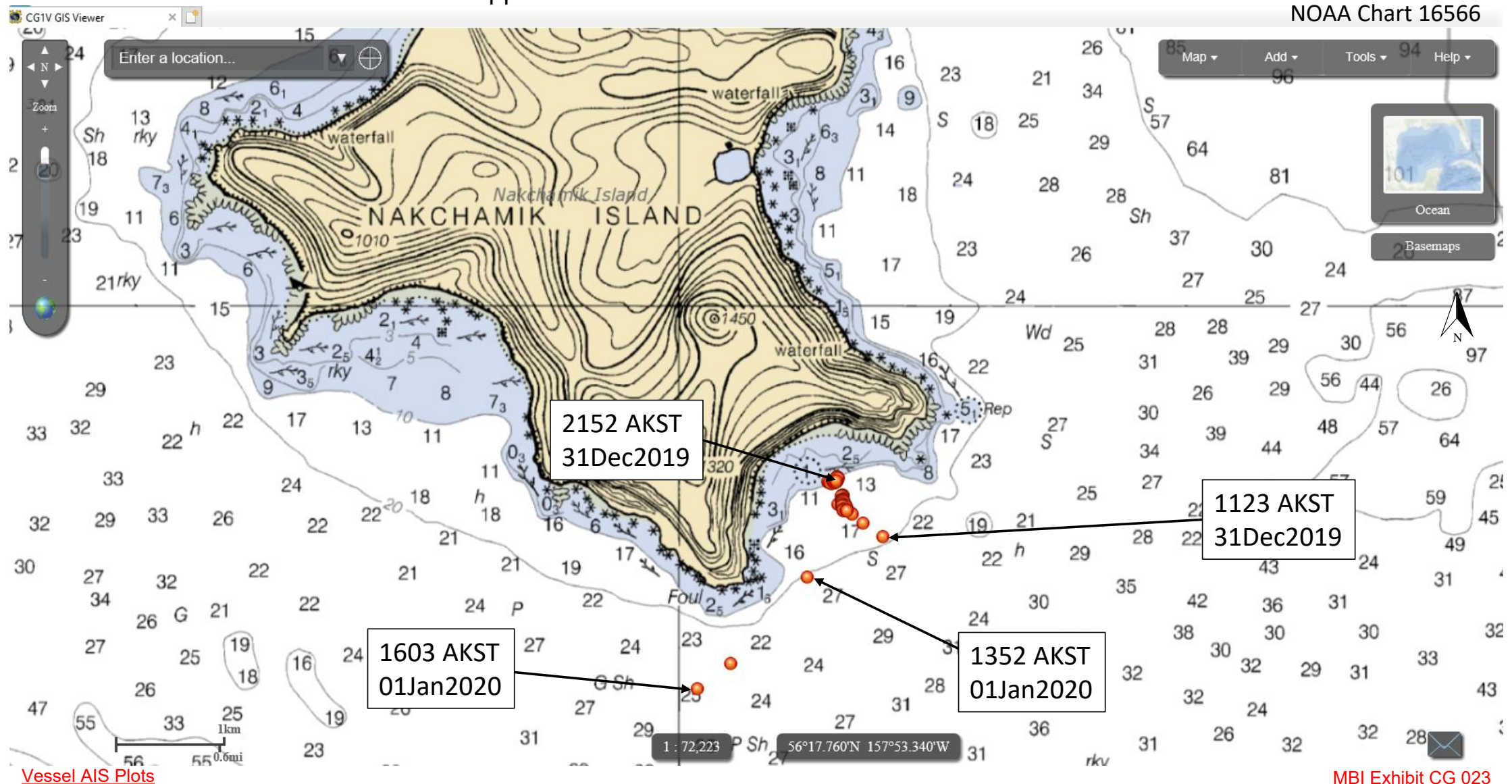


Vessel AIS Plots

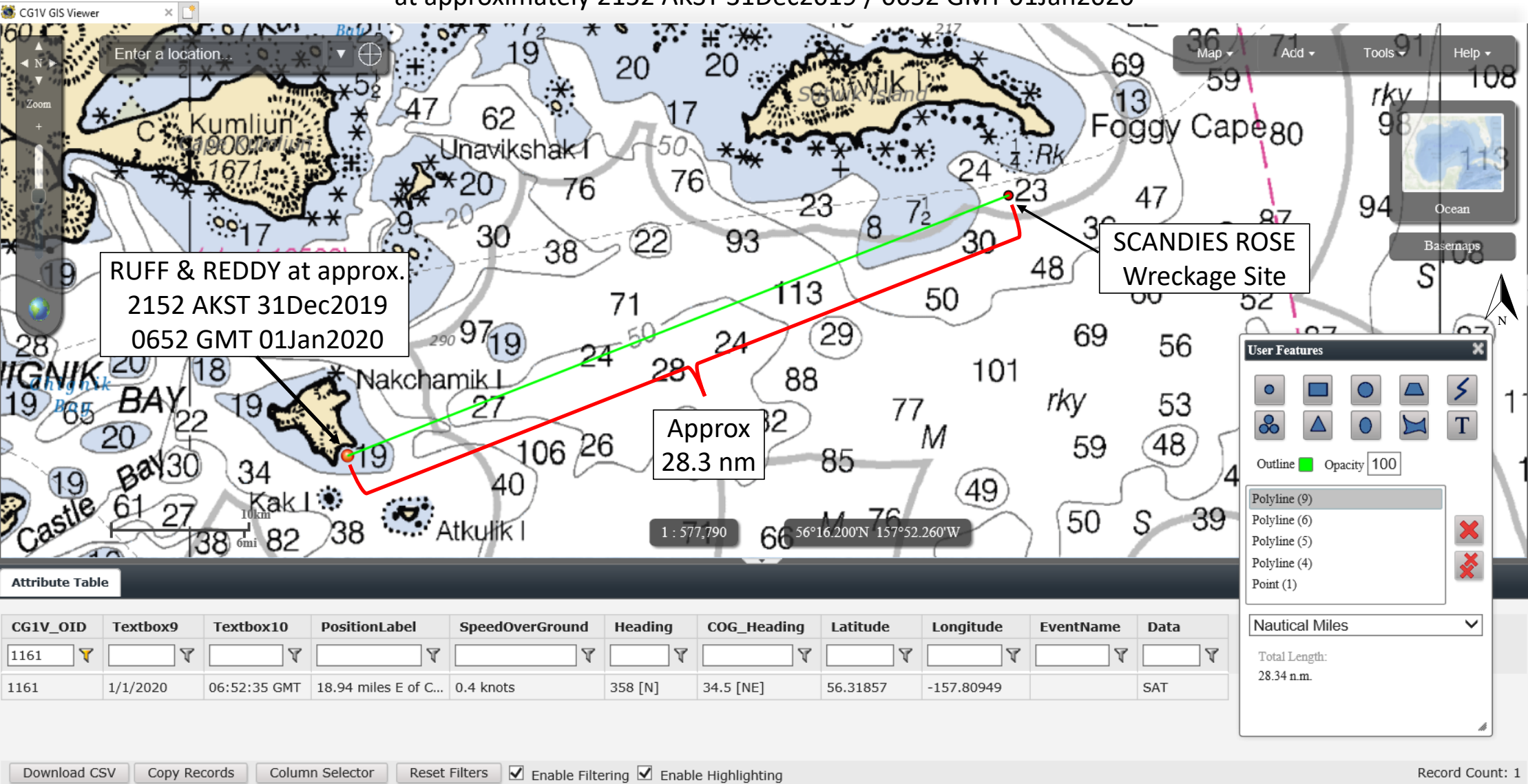
RUFF & REDDY AIS Data Approx 19 nm E of Chignik Light



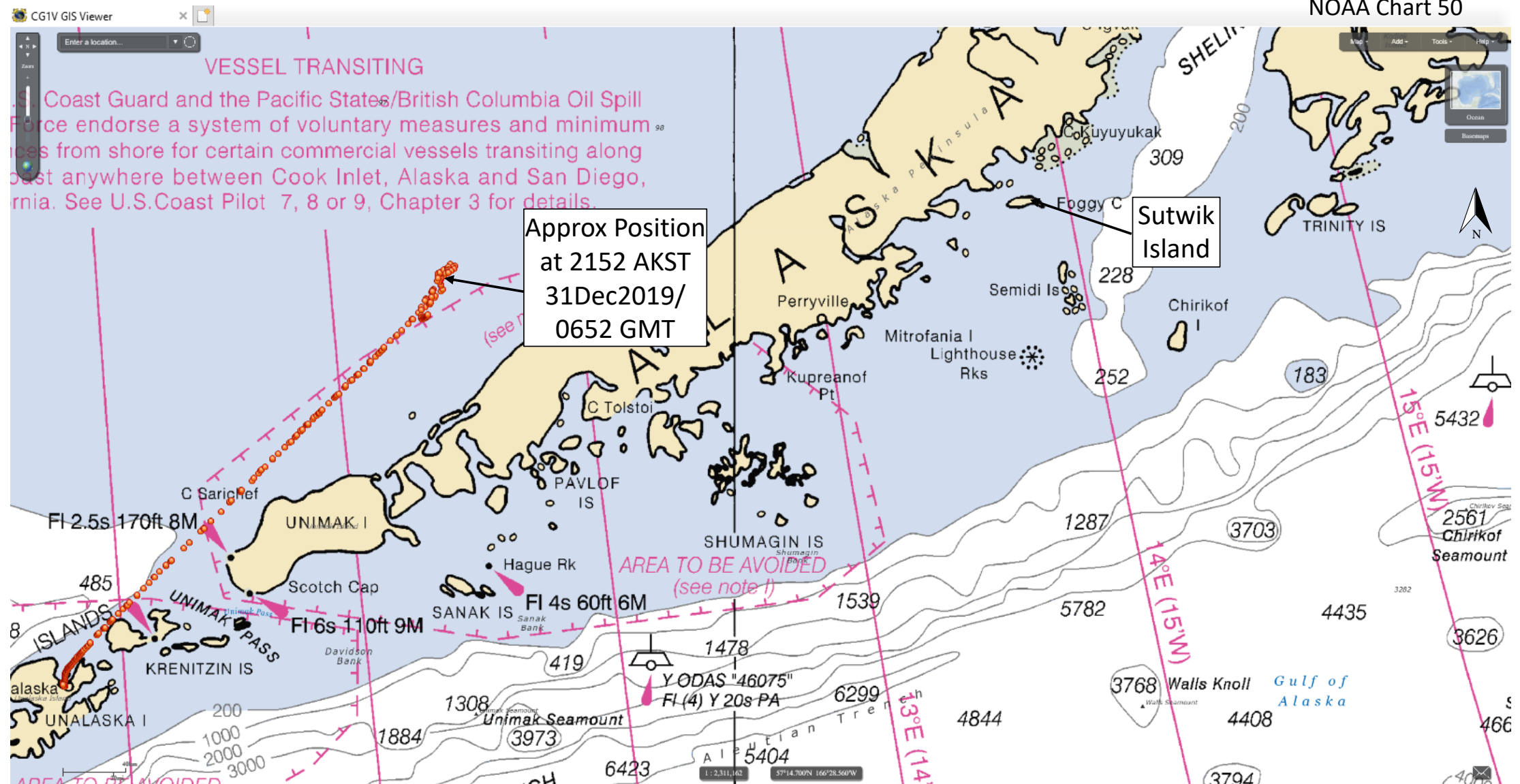
RUFF & REDDY AIS Data
From approx. 1123 AKST 31Dec2019 to 1603 AKST 01Jan2020



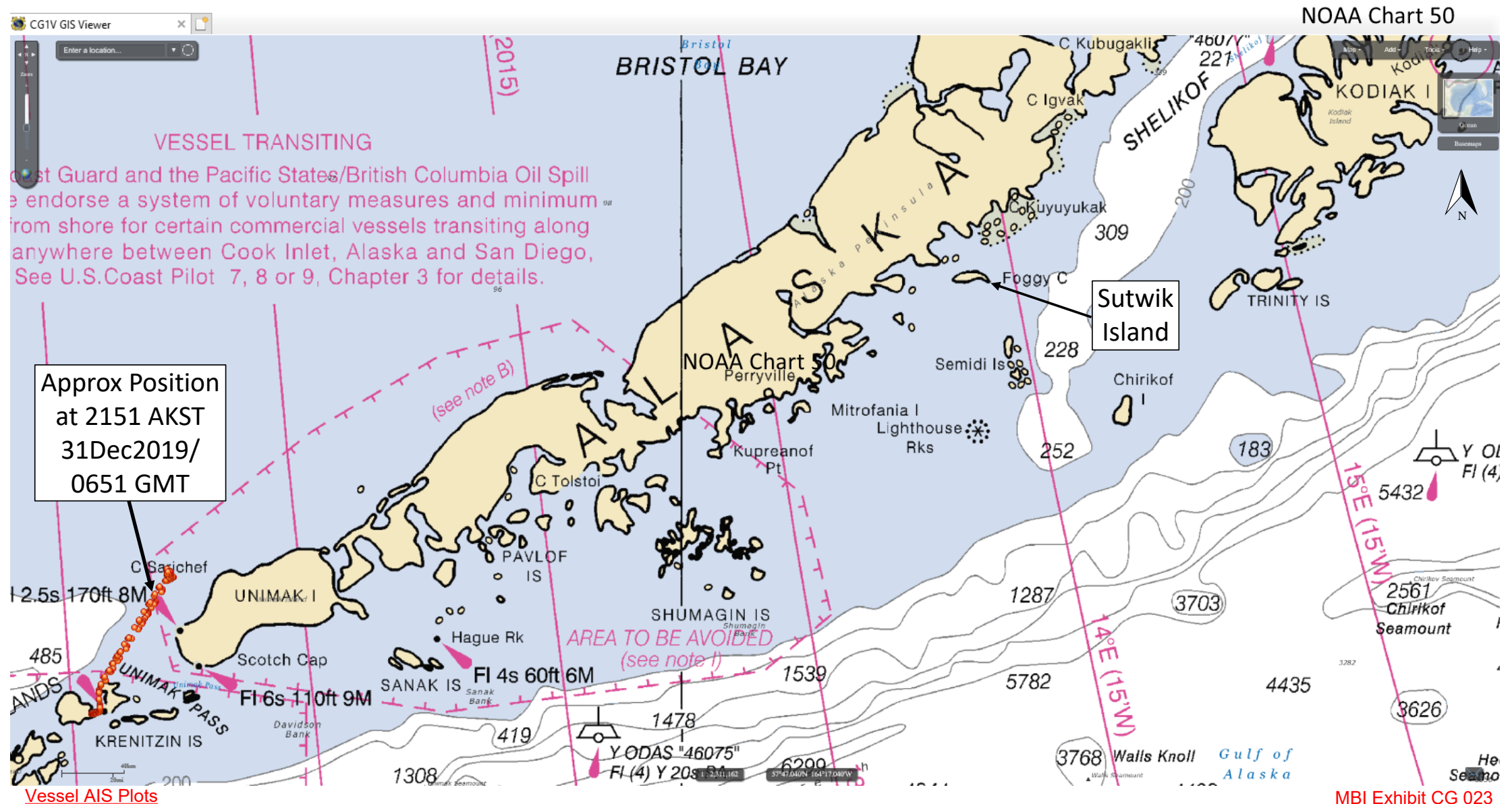
RUFF & REDDY Relative Position to SCANDIES ROSE Wreckage Site
at approximately 2152 AKST 31Dec2019 / 0652 GMT 01Jan2020



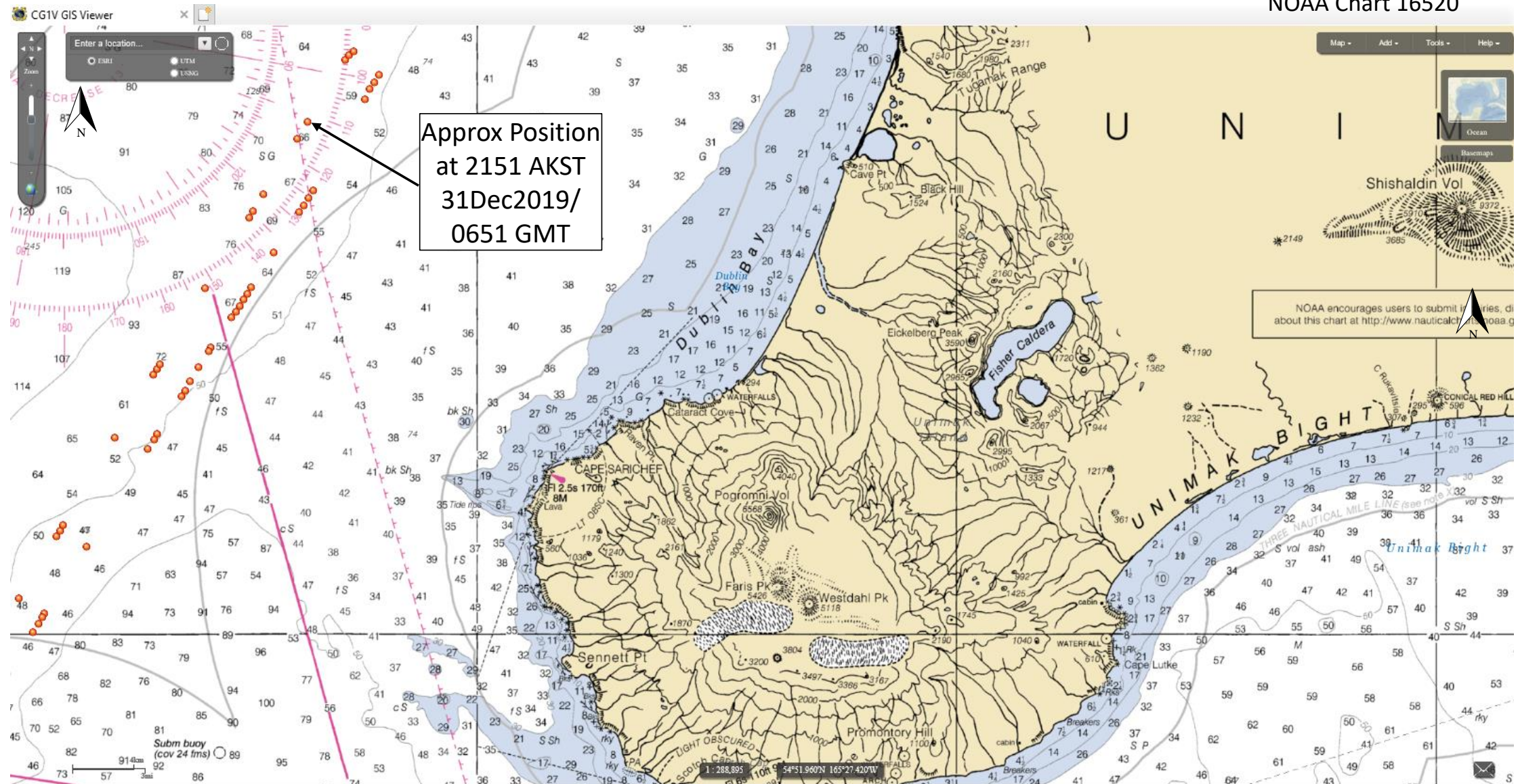
PACIFIC SOUNDER AIS Data 30Dec2019 to 01Jan2020 (GMT)



NEW VENTURE AIS Data 30Dec2019 to 01Jan2020 (GMT)



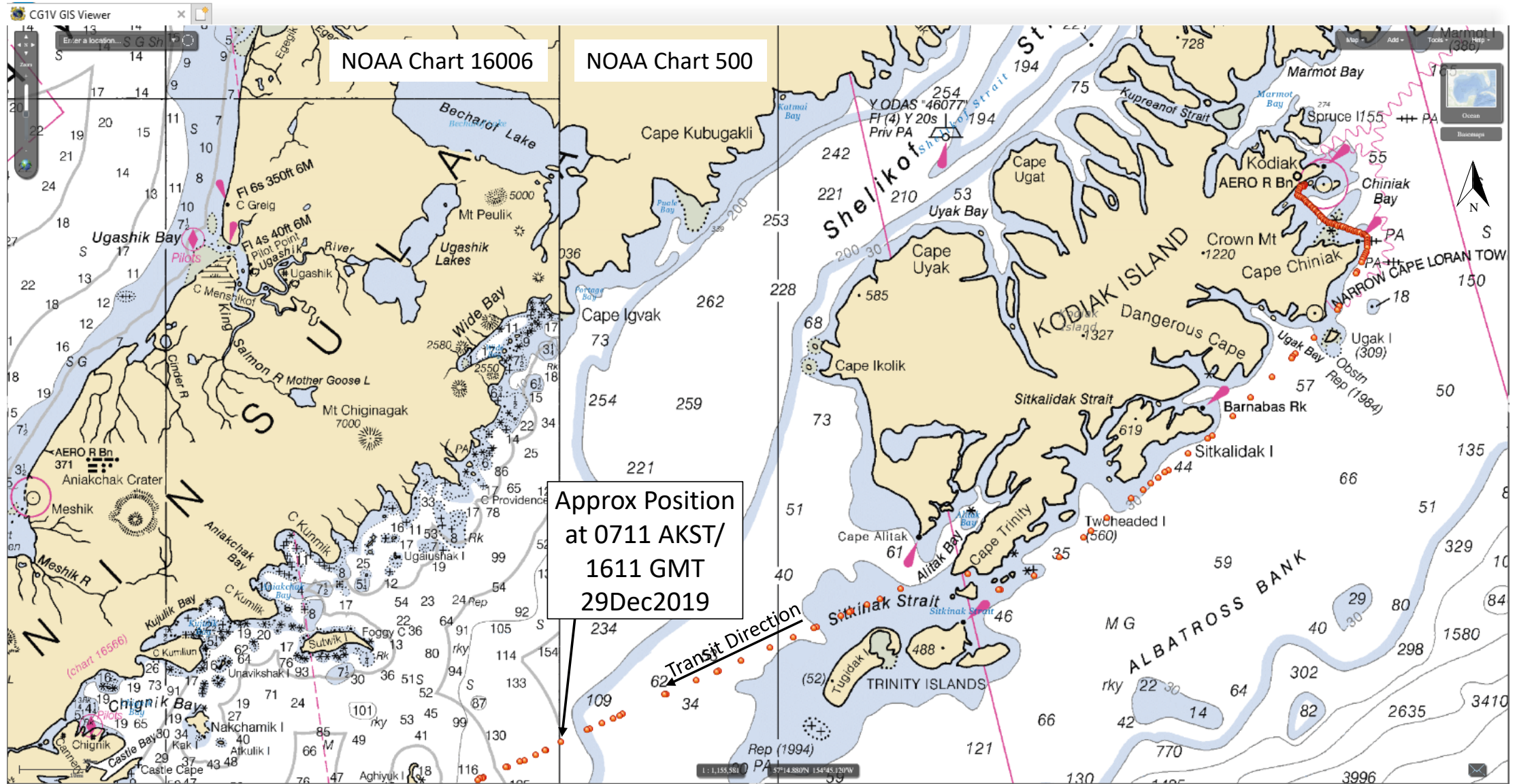
NEW VENTURE AIS Data 30Dec2019 to 01Jan2020 (GMT)



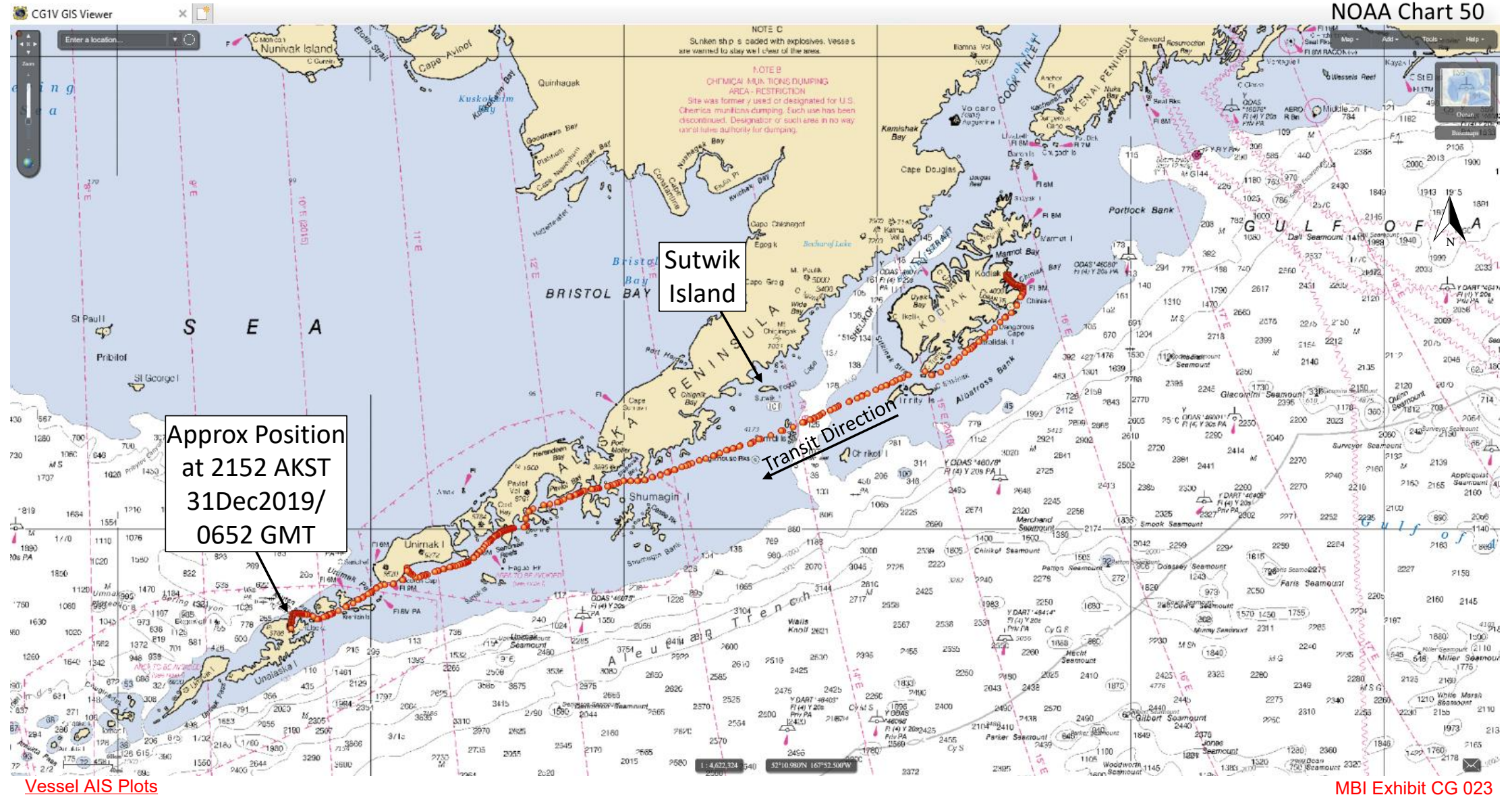
Vessel AIS Plots

MBI Exhibit CG 023
Page 14 of 17

AMATULI AIS Data 29Dec2019 (GMT)



AMATULI AIS Data 28Dec2019 to 02Jan2020 (GMT)



Vessel Positions Relative to SCANDIES ROSE at approximately 2151 or 2152 AKST 31Dec2019

