

USS F.H. Com

Arrived from Staten Island N.Y.
①5
75.30 Seminole Soc. Mich. June 28, 1929
received in sprash American river

Rev. Arthur Wallace

later made into a bag of skins
more to the river bank of the
from Dr. Payal purchased from Canada
1929 or 30

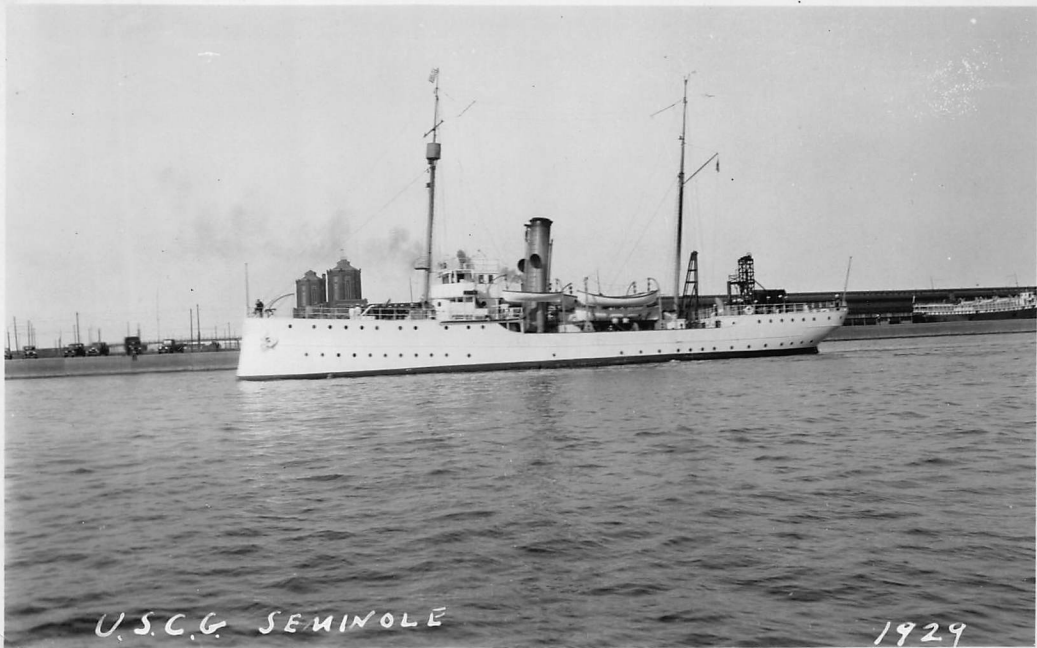


v4
543
3
a S Coast Sloop

"utter" "Seminole"

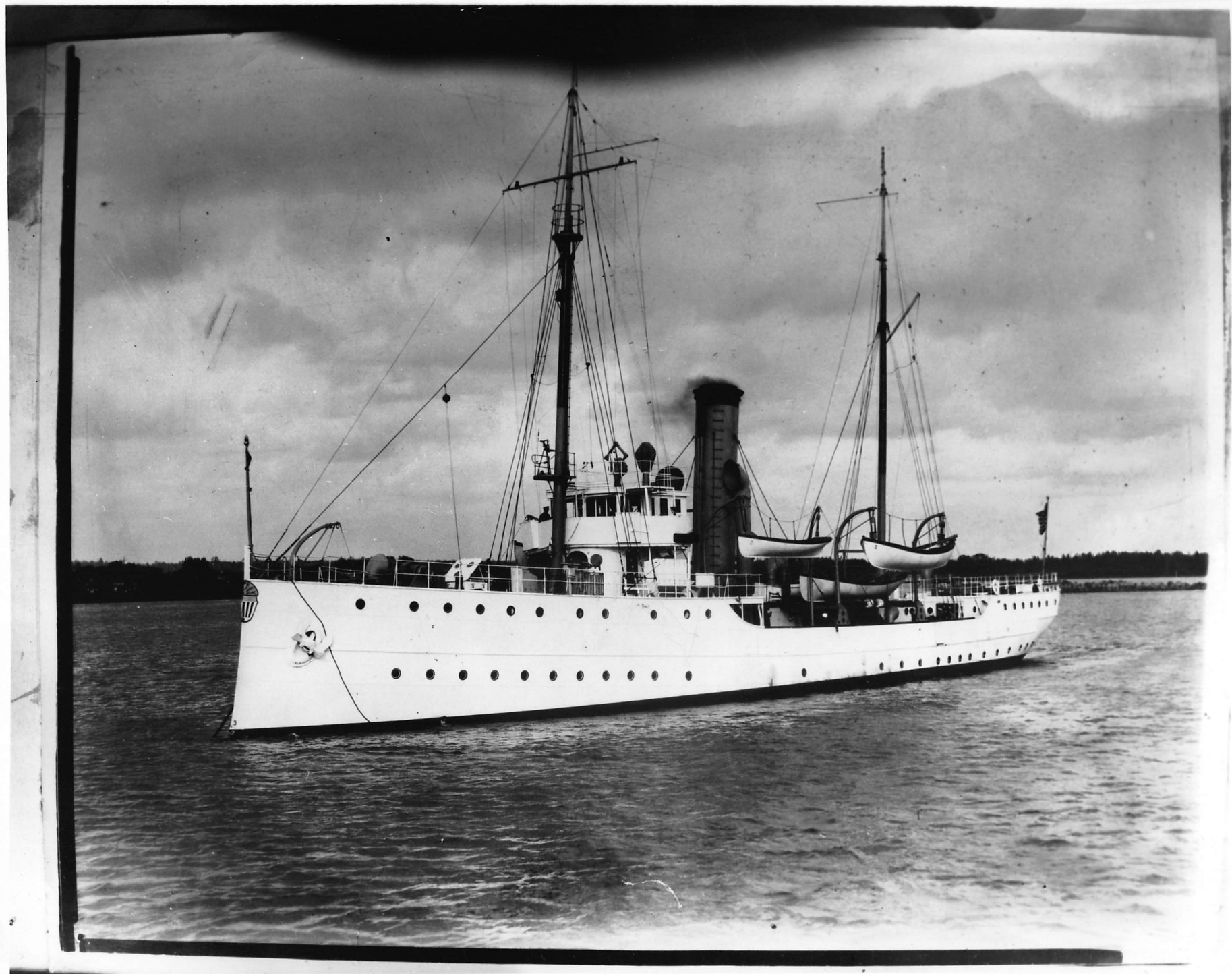
well decked w. y. station.

1920 sea going + how.



U.S.C.G. SEMINOLE

1929



Revenue Cutter SEMINOLE
on the Great Lakes

Seminole was 188 ft., built 1899,
was based at Sault Ste. Marie, Mich
in 1920s.

FILE COPY

From the Great Lakes ship's
collection of
Father Edward J. Dowling,
University of Detroit

(In H.E. Whitman's movie
on Great Lakes, C-APA-1,
7/7/76)



Crew of Seminole at close of World War. J

PLEASE CREDIT

OFFICIAL COAST GUARD PHOTO
NUMBER *API-1969*

copied
From: Public Information Div.
U. S. Coast Guard
Washington, D. C. 20591