

DEPARTMENT OF COMMERCE AND LABOR
LIGHT-HOUSE BOARD

REGULATIONS GOVERNING

THE

UNIFORMS

OF THE

OFFICERS AND MEN

OF THE

UNITED STATES LIGHT-HOUSE
ESTABLISHMENT



1907



WASHINGTON
GOVERNMENT PRINTING OFFICE
1907

UNIFORMS

FOR

OFFICERS AND EMPLOYEES OF THE LIGHT-HOUSE ESTABLISHMENT.

GENERAL REGULATIONS.

All persons belonging to the Light-House Establishment will strictly conform to the regulations governing uniforms, published by the Department of Commerce and Labor.

All persons on duty on board of tenders or light-vessels, or on duty at light-stations, will at all times wear the uniforms of their respective grades herein directed.

MASTERS OF TENDERS

(Plates I and II.)

to wear a double-breasted sack coat of navy-blue cloth in winter, or navy-blue serge or flannel in summer; with five large regulation triple-gilt buttons on each side—the top button placed close to the collar, the lower button about 6 inches from the bottom, and the other buttons at equal spaces between the top and bottom buttons; the length of coat to be the extended arm and hand; the coat to be provided with two inside breast pockets and two outside hip pockets, the latter to have flaps so arranged as to be worn inside the pockets if desired. Each sleeve to have two small buttons on the cuff seam, $\frac{1}{2}$ inch apart, the lower button 1 inch from bottom of cuff.

The vest to be of navy-blue cloth in winter, or navy-blue serge or flannel in summer, and cut single-breasted, with five small regulation buttons and a small rolling collar, so as to show about 6 inches of the shirt bosom; to have a watch pocket in the left side and a lower pocket on each side.

The trousers to be of navy-blue cloth in winter, or navy-blue serge or flannel in summer, cut in the prevailing styles, with pockets in hip seams.

Cap to be of the pattern shown in Plate I, with adjustable chin strap of gold lace $\frac{1}{2}$ inch wide, fastened to the sides by two small regulation buttons; in the middle of the front of the cap a gold-embroidered wreath 1 $\frac{1}{2}$ inches high by 2 inches spread, inclosing a

silver-embroidered light-house $\frac{3}{4}$ inch high; a black mohair braid $1\frac{1}{2}$ inches wide to be worn around the cap.

Sleeve ornaments for the masters of tenders will be four stripes of $\frac{1}{4}$ -inch gold lace laid on at intervals of $\frac{1}{4}$ inch. The first stripe to be 2 inches from the bottom of cuff. A silver-embroidered light-house $\frac{3}{4}$ inch high to be laid on the front of the sleeve $\frac{1}{4}$ inch above the top stripe.

The overcoat to be of the Caban style, of navy-blue cloth, with rolling collar 5 inches deep, double-breasted, with six large gutta-percha buttons on each side, the top button to be near collar seam, the bottom button 8 inches from bottom of skirt, and the others spaced equally between top and bottom buttons. The skirt to descend to the knees. Pockets to be in the side seams, breast high. The sleeve ornaments are not to be worn on overcoat.

REGULATION BUTTONS.

(Plate I)

Buttons to be triple gilt on brass. The outer rim to be slightly raised, inside of which, arranged circularly, are to be the letters "U. S. L. H. E." There will be three sizes of buttons:

Large, 1 inch in diameter.

Medium, $\frac{3}{4}$ inch in diameter.

Small, $\frac{1}{2}$ inch in diameter.

The medium button to be worn on serge or flannel suits.

MATES OF TENDERS

to wear the same uniform as masters of tenders. The sleeve ornaments of the first mate shall be three stripes of $\frac{1}{4}$ -inch gold lace, surmounted by a silver-embroidered light-house $\frac{3}{4}$ inch high. That of the second mate shall be two stripes of $\frac{1}{4}$ -inch gold lace, surmounted by a silver-embroidered light-house $\frac{3}{4}$ inch high. That of third mate shall be one stripe of $\frac{1}{4}$ -inch gold lace, surmounted by a silver-embroidered light-house $\frac{3}{4}$ inch high. That of fourth mate, the silver light-house $\frac{3}{4}$ inch high, no stripe.

When pilots are permanently employed on board of light-house tenders they shall wear a uniform similar to that of first mates, except in place of the silver-embroidered light-house on the sleeve shall be worn in the same place a silver-embroidered letter "P" $\frac{3}{4}$ inch high.

ENGINEERS OF TENDERS

(Plate IV)

to wear the same uniform as masters of tenders, except that the sleeve ornaments shall consist of three stripes of $\frac{1}{4}$ -inch gold lace,

surmounted by a silver-embroidered three-bladed propeller $\frac{3}{4}$ inch in diameter.

First assistant engineers to wear the same uniform as chief engineers, except the sleeve ornaments are to be two stripes of $\frac{1}{4}$ -inch gold lace, surmounted by a silver-embroidered three-bladed propeller $\frac{3}{4}$ inch in diameter.

Second assistant engineers to wear same uniform as chief engineers, except that sleeve ornaments will be one stripe of $\frac{1}{4}$ -inch gold lace, surmounted by a silver-embroidered three-bladed propeller $\frac{3}{4}$ inch in diameter.

Third assistant engineers to wear same uniform as chief engineers, except that sleeve ornament is to be a silver-embroidered three-bladed propeller $\frac{3}{4}$ inch in diameter, no stripe.

Hats of straw may be worn in summer or in southern climates; the crown to be not less than 4 inches in height and the brim not less than $3\frac{1}{2}$ inches wide, with a black silk ribbon band not less than 2 inches wide. In any one district the pattern adopted must be the same.

ON BOARD SUPPLY VESSEL OR TENDERS.

CLERKS

to wear the same uniform as second mates of tenders, except that the distinguishing mark above the upper sleeve stripe will be the letter "C" in silver, $\frac{3}{4}$ inch high, instead of the light-house.

YEOMEN

to wear the same uniform as clerks of tenders or supply vessel, except that the distinguishing mark on the sleeve will be the letter "Y" only, in silver, $\frac{3}{4}$ inch high, instead of the light-house.

QUARTERMASTERS

are to wear the same uniform as fourth mates of tenders, except the cap and the silver light-house on the sleeve. The cap is to be of the same pattern as that worn by masters of tenders; the device to be a silver light-house with gold-worked letters "U. S. L. H. E." $\frac{3}{4}$ inch in length, in a circle at the base of the light-house. The chin strap is to be of leather. Quartermasters will wear a steering wheel $1\frac{1}{2}$ inches in diameter embroidered in white silk or white thread on both coat sleeves midway between the shoulder and elbow.

CARPENTERS

to wear the same uniform as quartermasters, except a broadax, $1\frac{1}{2}$ inches long, to be worn on the sleeves instead of the steering wheel.

COOPERS

to wear same uniform as seamen, except in each corner of collar to wear a barrel worked in white silk or white thread. The same device to be worn on the sleeves of shirt midway between the shoulder seam and the elbow. Hats for winter and summer to be the same prescribed below for seamen and firemen.

STEWARDS AND COOKS

to wear a single-breasted, navy-blue cloth or flannel coat, with five regulation medium buttons on the right side, spaced equally from the upper button, placed 3 inches below the collar seam. Vest to be of navy-blue cloth or flannel, showing about 6 inches of the shirt bosom, with five small regulation buttons, equally spaced on right side. Pantaloons to be of navy-blue cloth or flannel, cut in prevailing style, with pockets in side seams. Caps same pattern as masters of tenders, but without ornaments or braid band. The adjustable chin strap to be dark patent leather.

The cook to wear a cook's cap and white apron when cooking.

The steward, when waiting, to wear a white apron and white jacket.

The overcoat to be that prescribed for the crew.

SEAMEN AND FIREMEN

(Plate III)

to wear a navy-blue flannel shirt, cut in the navy style, with rolling collar 6 inches deep, with two stripes of $\frac{1}{4}$ -inch white tape, laid on $\frac{1}{2}$ inch apart, extending to the bottom of the bosom opening of shirt and joined so as to form a continuous line. The cuffs to have two stripes of white tape $\frac{1}{4}$ inch wide around them, the upper edge of upper stripe to join the gathering of sleeve to cuff, the second $\frac{1}{2}$ inch below the first. The corners of the collars to have worked on them, in white thread or cotton, a light-house $\frac{7}{8}$ inch high. If firemen, these ornaments are to be of red tape and embroidered with red thread or cotton.

Hats for winter to be dark-blue cloth, round crowned, with a stitched band above the brim $\frac{1}{4}$ inch wide. The brim to be $2\frac{1}{2}$ inches broad, of double cloth, stitched through and through with 12 or 14 rows of stitching of black silk to stiffen it. A black silk ribbon $1\frac{1}{4}$ inches wide, with "Light-House Service" embroidered in gold-wire letters $1\frac{1}{2}$ inches high, to be worn around the crown, joining the binding of crown. Hats of similar design in brown canvas to be of same shades as canvas overall suits, but without ribbons, to be worn with overall suits when working.

For winter-weather work a watch cap of the navy pattern, knitted of dark-blue yarn, will be worn by crew to protect the ears.

In summer a straw hat, with a crown 4 inches high and brim from $2\frac{1}{2}$ to 3 inches broad, may be worn by crew. A black ribbon, with "Light-House Service" worked in gold letters $\frac{1}{2}$ inch high, will be worn around crown of straw hats.

Overall suits to consist of brown cotton jumper suits, with 5-inch deep collars and pantaloons of same material, to be worn when doing such work as would injure the blue suit.

Overcoats to be of navy-blue cloth, double-breasted, with five black gutta-percha buttons on each side. The top button to be near the collar, the lower button 6 inches from the bottom—the other buttons spaced equally between the top and bottom buttons. The skirts to descend halfway from hip to knees.

Rain suits of oiled canvas, consisting of a jumper, pantaloons, and southwester, known as Cape Anns, will be worn in wet weather by the crews of tenders and light-vessels.

MASTERS OF LIGHT-VESSELS

to wear the same uniforms as the first mates of tenders.

Mates of light-vessels will wear the same uniforms as second mates of tenders.

If there are more than two mates, the second and third mates will wear the same uniforms as third and fourth mates of tenders.

ENGINEERS OF LIGHT-VESSELS

to wear the same uniforms as first assistant engineers of tenders.

Assistant engineers will wear the same uniform as second assistant engineers of tenders.

If there are more than two engineers, the second assistant will wear the same uniform as the third assistant engineer of tenders.

SEAMEN AND FIREMEN OF LIGHT-VESSELS

to wear the same uniform as seamen and firemen of tenders.

KEEPERS OF LIGHT-HOUSES

(Plate V)

to wear the same uniform as the masters of tenders, except the ornaments on the sleeves of coat and the gold chin strap on cap. The chin strap on cap will be of leather. They will wear on each lapel of the sack coat a loop embroidered in gold, $2\frac{1}{2}$ inches long by $\frac{3}{4}$ inch wide, the border of loop to be $\frac{1}{16}$ inch broad. If principal keeper, the letter "K" will be worn within the loop. If first assistant keeper, the figure "1" will be worn embroidered within the loop. If second assistant keeper, the figure "2" will be worn embroidered within the loop. If third assistant keeper, the figure "3" will be

worn embroidered within the loop. The letter and figures to be of silver.

If there are more than three assistants, they will wear the number "4," "5," or "6," as the case may be, embroidered within the loop.

LIGHT-HOUSE AND BUOY-DEPOT KEEPER

to wear same uniform as principal keepers of light-stations.

WATCHMEN AT THE GENERAL LIGHT-HOUSE DEPOT

(Plate VI)

to wear a single-breasted sack coat of navy-blue cloth in winter, or of navy-blue flannel in summer, cut after the pattern of the army blouse, with a turnover collar $1\frac{1}{2}$ to 2 inches deep, buttoned up to the throat, with five large regulation buttons on the right side, the top button just below the collar seam, the lower button just below the waist, the other buttons equally spaced between the top and bottom buttons. The letter "W," $\frac{3}{4}$ inch high, worked in gold, inclosed in a gold embroidered loop of same dimensions as that worn by light-keepers, to be worn on each end of the collar, 1 inch from bottom.

The vest to be of navy-blue cloth in winter or flannel in summer, to be so cut as to show about 5 inches of shirt bosom, and to have five small regulation buttons on right side; the vest to have a watch pocket on right side and a pocket on each side below.

Pantaloons to be of navy-blue cloth in winter or flannel in summer, cut in the prevailing style, with pockets in the side seams.

Hats to be of the helmet pattern, of blue in winter or light-brown linen in summer. The helmet to have a black, glazed, $\frac{1}{2}$ -inch leather strap in front, secured on each side by small regulation buttons, and to have one gilt buckle on each front quarter. To have a gilt metal light-house 1 inch above the chin strap in the middle of the front, with a whistling and spar buoy crossed.

The captain of the watch to wear the light-house in gold embroidered wreath.

Belts to be of adjustable black leather, 2 inches wide, with gilt clasps, on which in raised letters to have the word "Police." When overcoats are worn the belt will be worn outside, with a leather stall to carry the club.

The shield to be the same as that worn by the police of Richmond County, N. Y. To be worn on the left breast of the sack coat in summer or the overcoat in winter.

Overcoat to be double-breasted, of navy-blue cloth, with five large regulation buttons on each side, equally spaced between the top button at collar seam and the bottom button, 6 inches from the bottom of the skirt. The skirts to descend to the knees, and the rolling collar to be 5 inches deep. The pockets on each side to be breast high, cut vertically, and two pockets with flaps cut horizontally just below

the hips. A cloth belt of same material as overcoat to be fitted from the side seams, 2 inches broad, to button behind with a large-sized regulation button. The back middle seam to be slashed up 10 inches with a fly flap, closed by four small-sized regulation buttons. The collar to be fitted to turn up and button with a strap of cloth to a small regulation button.

Caps of blue cloth, with ear flaps, to turn down over the ears for protection in cold winter weather, day or night, may be worn. When not needed, to tie up in front with silk ties.

MISCELLANEOUS.

All males employed on tenders or light-vessels, or at shore light-stations, and all seamen or firemen shall wear the uniform prescribed at all times when on duty, and when visiting the Light-House Board's office or the inspector's or engineer's office they will always appear in their proper uniform.

Laborers employed to care for river or post lights are not required to wear uniform.

All keepers and other employees, when cleaning lamps or lenses, will wear aprons provided and issued.

Engineers, in repairing or cleaning machinery of vessels, may wear the overall suit prescribed, to save the uniform.

The drawings, which are made a part of the regulations, explain the details of the uniform.

In hot weather white uniforms may be worn. The uniforms for officers, keepers, etc., are to be —

(a) White service coat, together with standing collar, buttoned to the chin, made of white linen duck, white bleached cotton twill, or similar material, without braid or trimming and fly front, and with no slits over the hips; the front to be fitted to button through with five plain, white flat buttons; standing collar to be closed in front and fitted with hook and eye at base and top, to be from 1 to 2 inches in height, and to be of several thicknesses, in order to admit of wearing without linen collar; to have on each breast an outside patch pocket, top of pocket to be abreast of the second button, and dimensions about $4\frac{1}{2}$ to 6 inches, lower corners slightly rounded, with a flap on top from $2\frac{1}{2}$ to $3\frac{1}{2}$ inches deep, shield-shaped, and to button with a small-size white button; sleeve marks to be of white linen tape.

(b) Trousers same as blue trousers, except to be made of the same material as the coat.

(c) A white cover to fit neatly over the cap underneath the chin strap and the mohair braid, or a skeleton cap with device, mohair braid, and visor, the same as the blue cap, may be worn.

For seamen and firemen the white uniform is to be the working dress of the navy pattern.

The measures for uniforms of the Light-House employees are sub-joined, and employees are authorized to have the uniform made wherever they may prefer; but all uniforms must conform to the regulations herewith established.

Officers are forbidden to wear any part of their uniform with citizen clothes, except the cap and overcoat. In foul weather officers and crews will be permitted to wear rain clothes.

By order of the Light-House Board:

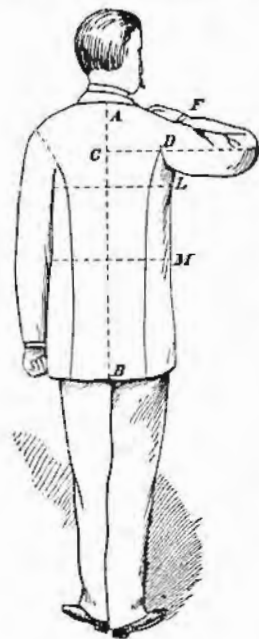
GEO. C. REITER,
Rear-Admiral, U. S. N., Retired, Chairman.

MEASURE FOR UNIFORMS.

UNITED STATES LIGHT-HOUSE SERVICE.

N. B.—In every case the measure should be taken full and all questions answered.

Name:
 Rank or Rate:
 Station:
 District:
 Post-Office Address:



COAT MEASURE.

Take these with coat on.

LENGTH.—From A to B
A is Collar Seam.

SLEEVE.—From C to D
 From C to E
E is Elbow.
 From C around E to F
F is end of Sleeve.

Coat off.

BREAST.—All around at L
(Over Vest.)

WAIST.—All around at M
(Over Vest.)

OVERCOAT MEASURE.

LENGTH.—From A to length wanted

SLEEVE.—Take same as for undercoat, make no allowance

BREAST.—
 All around at L
(Over Undercoat.)
 All around at L
(Over Vest.)

WAIST.—
 All around at M
(Over Undercoat.)
 All around at M
(Over Vest.)

VEST MEASURE.

OPENING.—From H to I
H is Collar Seam. I is first button.

LENGTH.—From H to K
K is full length.

BREAST.—All around at L
(over Vest.)

WAIST.—All around at M
(over Vest.)



The last two measures should be same as breast and waist of coat.

TROUSERS MEASURE.

OUTSIDE SEAM.—From N to O
N is top of waistband. O is Heel Seam of Shoe.

INSIDE SEAM.—From R to S
R is close up in crotch. S is Heel Seam of Shoe.

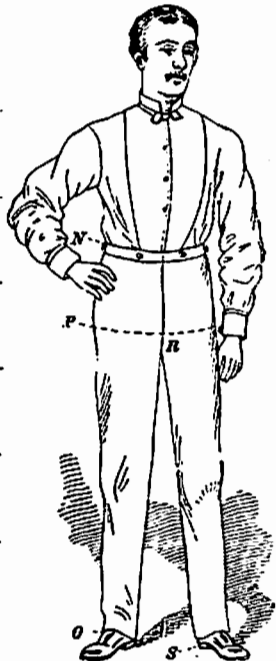
WAIST.—All around at N

SEAT.—All around at P
P is largest part of Seat.

KNEE.—Size wanted

FOOT.—Size wanted

STYLE OF POCKETS



HEIGHT WEIGHT AGE
It is important to have these correct.

GIVE DEFINITE IDEA OF CUSTOMER'S FORM.

Has he square or high shoulders—
 Which?

Has he sloping or round shoulders—
 Which?

Has he short, long, or medium neck—
 Which?

Is he erect or stooping—
 Which?

Is he slender or corpulent—
 Which?

CAP.

Size of Cap worn

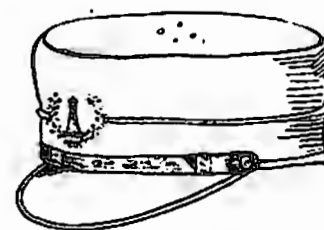
Canvas Suits and Guernseys can be fitted from the suit measure.
 The uniform coat being a sack, the full length should be measured to a point midway between the top of the hip bone and the kneejoint.

PLATE I
LIGHT HOUSE TENDERS

OFFICERS



CAP ORNAMENT



CAP



Large.
1 inch Diam.



Medium
3/4 inch D



Small.
1/2 inch D.

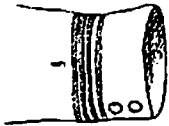
REGULATION

BUTTONS

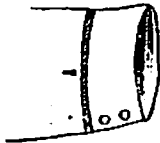
PLATE II LIGHT HOUSE TENDERS

MASTERS, & MATES

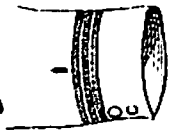
MASTER.
4 Bands with
Light House



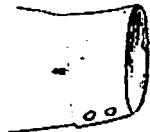
3rd MATE.
1 Band with
Light House



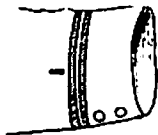
1st MATE.
3 Bands with
Light House



4th MATE.
No band -
Light House
only.



2nd MATE.
2 Bands with
Light House



MASTERS
&
MATES.

$\frac{3}{4}$ " Silver
LIGHT HOUSE

$\frac{1}{4}$ " Gold BRAID

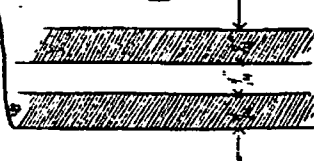
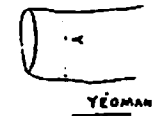
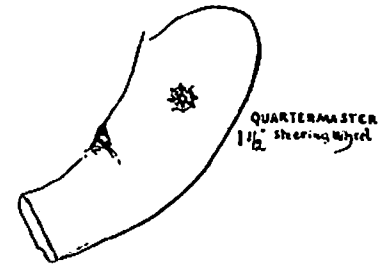
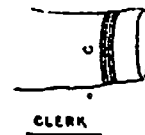
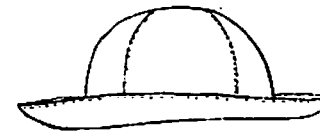
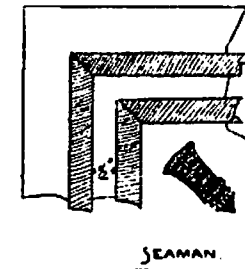
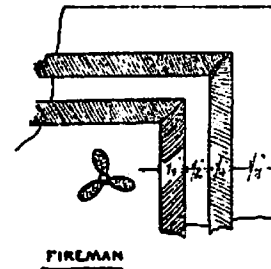


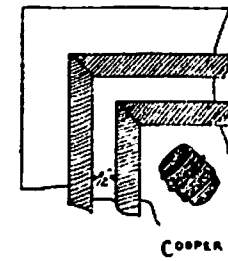
PLATE III LIGHT HOUSE TENDERS PETTY OFFICERS



SEAMEN



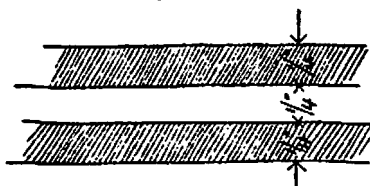
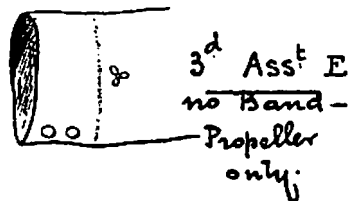
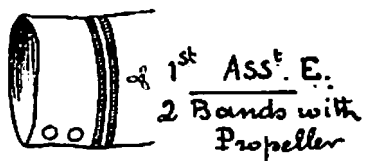
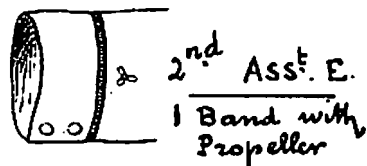
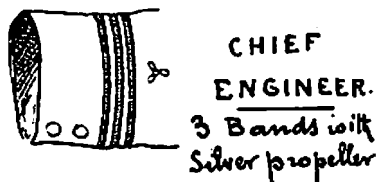
HAT.



Seamen. Two white braid lines one quarter of an inch wide spaced one quarter of an inch. ornament three quarters of an inch.

PLATE IV LIGHT HOUSE TENDERS

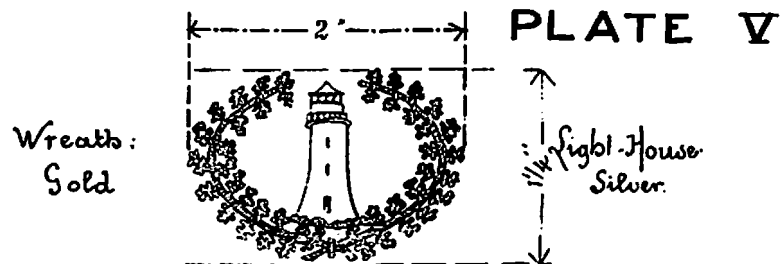
ENGINEERS



ENGINEERS

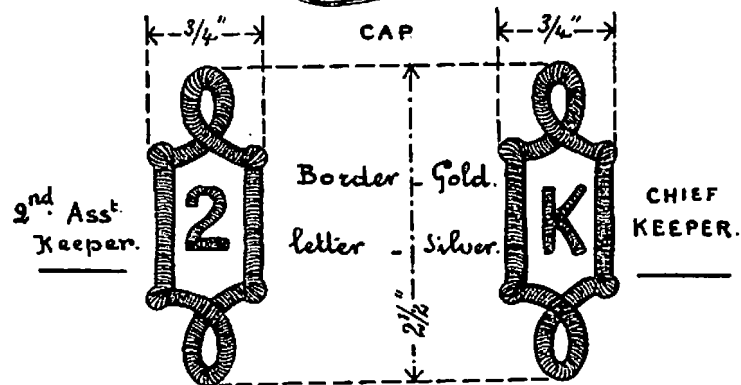
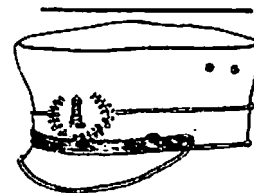
$\frac{3}{16}$ " Silver PROPPELLER.

$\frac{1}{4}$ " Gold BRAID.



CAP ORNAMENT

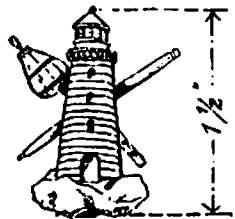
LIGHT KEEPERS



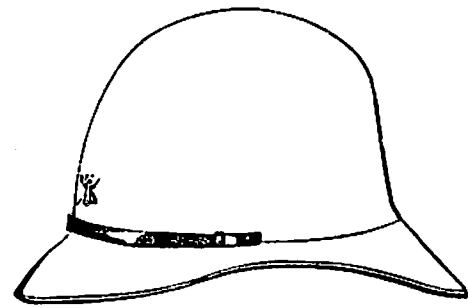
The letter or number inside of the border showing rank of Keepers:

- K for Chief Keeper.
- 1 " 1st Ass^t Keeper.
- 2 " 2nd " "
- 3 " 3^d " "
- 4 " 4th " "

PLATE VI
GENERAL L.H. DEPOT WATCHMEN



HAT ORNAMENT.



HAT



SHIELD