





U.S.C.G.C. HAMILTON  
AVONDALE SHIPYARDS, INC.  
PILOT HOUSE ( LOOKING FWD)  
2/18/67      NEG. NO. 7-546



U.S.C.G.C. HAMILTON  
AVONDALE SHIPYARDS, INC.  
PILOT HOUSE (PORT SIDE LOOKING AFT)  
2/18/67      NEG. NO. 7-545



U.S.C.G.C. HAMILTON  
AVONDALE SHIPYARDS, INC.  
C.O. CABIN (LOOKING FWD TO STB)  
2/18/67 NEG. NO. 7-658



U.S.C.G.C. HAMILTON  
AVONDALE SHIPYARDS, INC.  
C.O. STATEROOM (LOOKING AFT)  
2/18/67      NEG. NO. 7-656



U.S.C.G.C. HAMILTON  
AVONDALE SHIPYARDS, INC.  
C.O. CABIN (LOOKING FWD TO STB)  
2/18/67      NEG. NO. 7-658



U.S.C.G.C. HAMILTON  
AVONDALE SHIPYARDS, INC.  
EXEC. OFF. S.R. 01-94-1-L  
(LOOKING FWD)  
2/18/67      NEG. NO. 7-659



U.S.C.G.C. HAMILTON  
AVONDALE SHIPYARDS, INC.  
ENG OFFICERS STATEROOM  
(LOOKING AFT)  
2/18/67 - NEG. NO. 7-665





U.S.C.G.C. HAMILTON  
AVONDALE SHIPYARDS, INC.  
OFFICERS S.R. 1-90-2-L  
(LOOKING TO PORT)  
2/18/67 NEG. NO. 7-608



U.S.C.G.C. HAMILTON  
AVONDALE SHIPYARDS, INC.  
OFFICERS PANTRY ( LOOKING TO PORT )  
2/18/67      NEG. NO. 7-603



U.S.N.C.C. - HAMILTON  
BY SHIPYARDS, INC.  
MESS & LOUNGE  
(FOR USE BY STY)  
PHONE NO. 7-604



U.S.C.G.C. HAMILTON  
AVONDALE SHIPYARDS, INC.  
OFFICERS CONFERENCE RM  
(LOOKING TO PORT)  
2/18/67 NEG. NO. 7-648



U.S.C.G.C. HAMILTON  
AVONDALE SHIPYARDS, INC.  
AEROLOGICAL OFFICE  
01-120-0-Q (LOOKING AFT TO STB.)  
2/18/67 NEG. NO. 7-649



U.S.C.G.C. HAMILTON  
AVONDALE SHIPYARDS, INC.  
CREW BERTH 2-168-0-L  
(STB SIDE LOOKING AFT)  
2/18/67      NEG. NO. 7-581



J.S.C.G.C. HAMILTON  
AVONDALE SHIPYARDS, INC.  
CREWS STUDY 2-144-0-L  
(LOOKING FWD TO STB)  
2/18/67 NEG. NO. 7-579

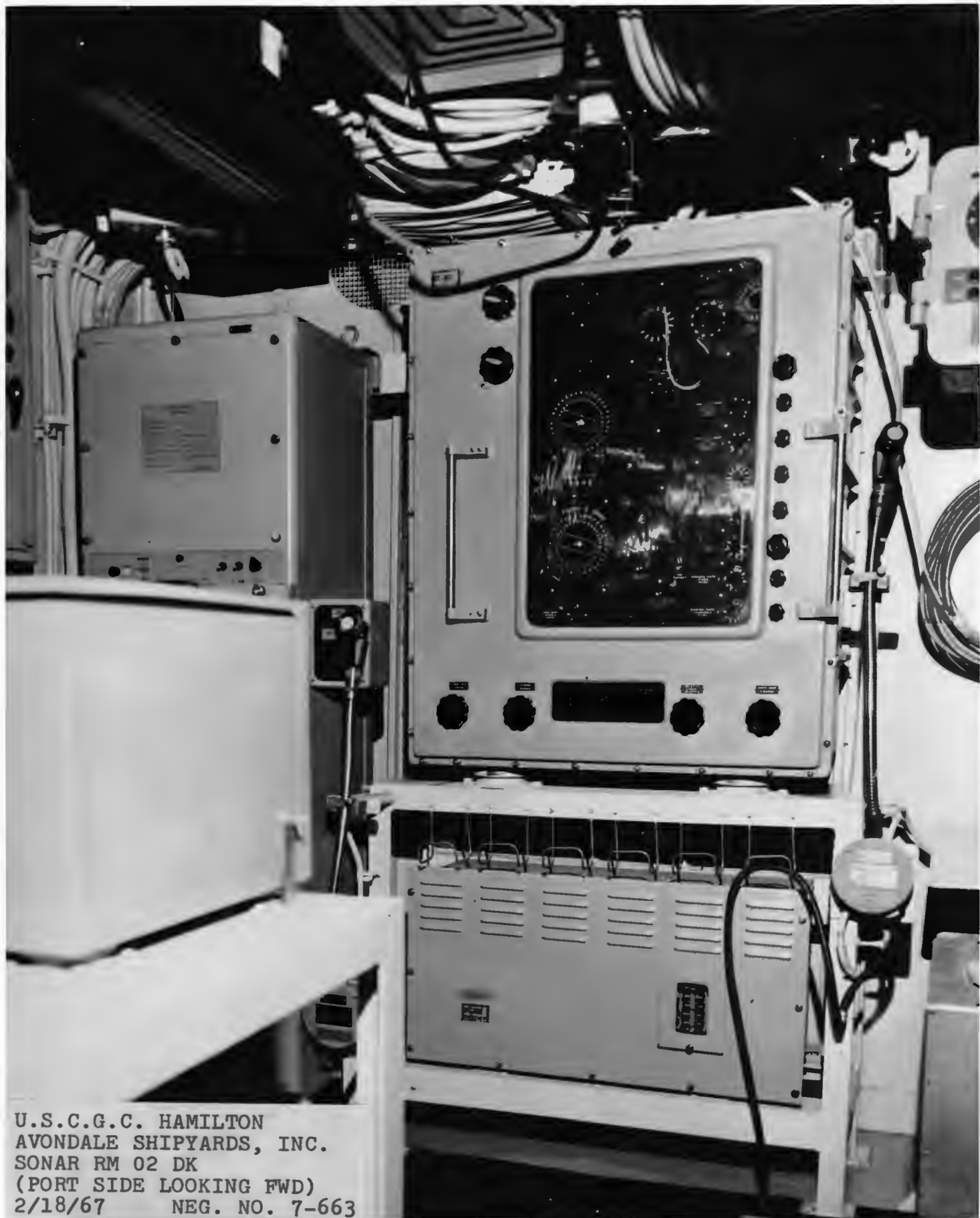


U.S.C.G.C. HAMILTON  
AVONDALE SHIPYARDS, INC.  
AIR SEARCH RADAR RM  
01-187-0-2- (LOOKING AFT)  
2/18/67 NEG. NO. 7-641





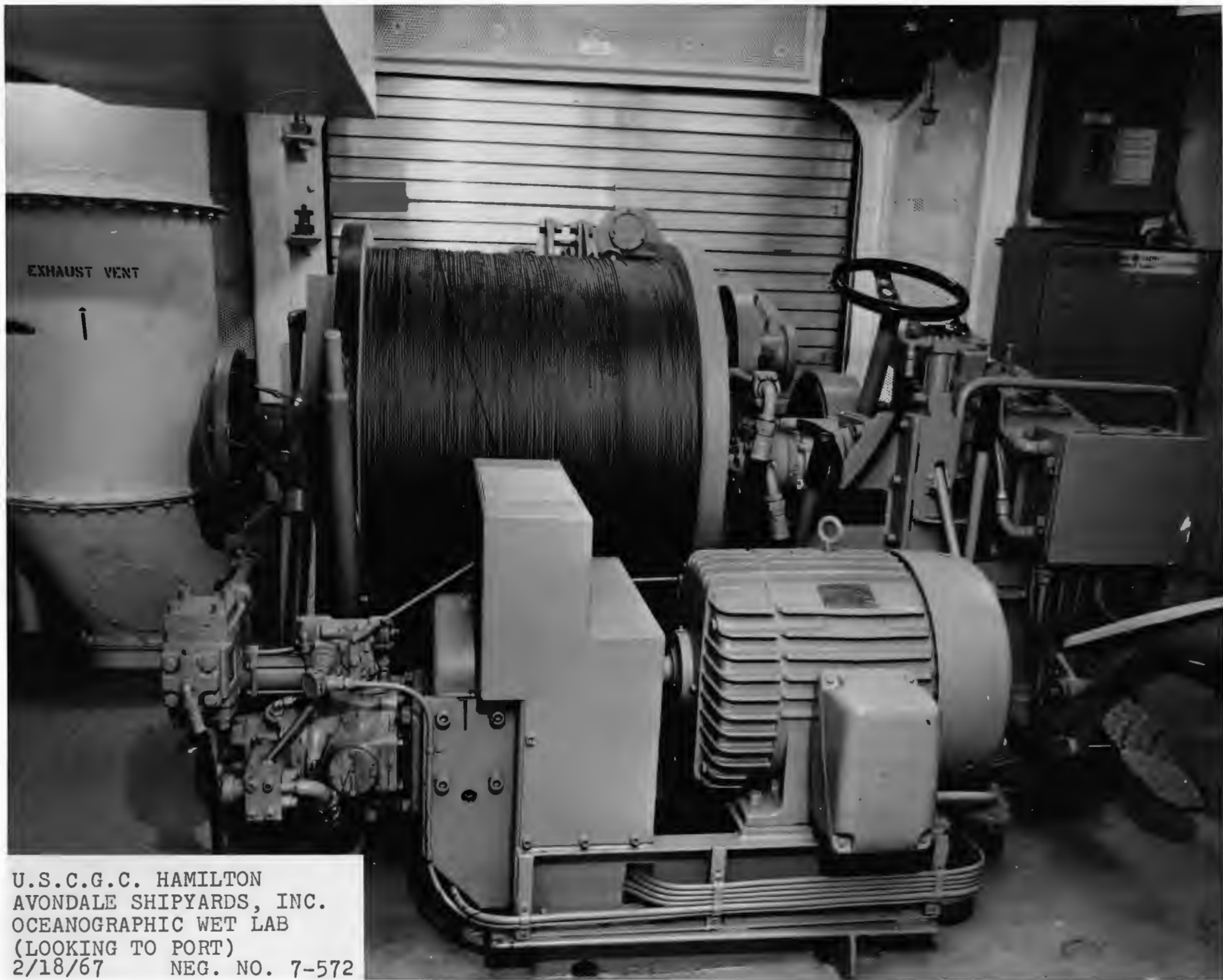
U.S.C.G.C. HAMILTON  
AVONDALE SHIPYARDS, INC.  
FIRE CONTROL ROOM  
(LOOKING AFT TO STE)  
2/15/67 INT. NO. 7-609



U.S.C.G.C. HAMILTON  
AVONDALE SHIPYARDS, INC.  
SONAR RM 02 DK  
(PORT SIDE LOOKING FWD)  
2/18/67 NEG. NO. 7-663



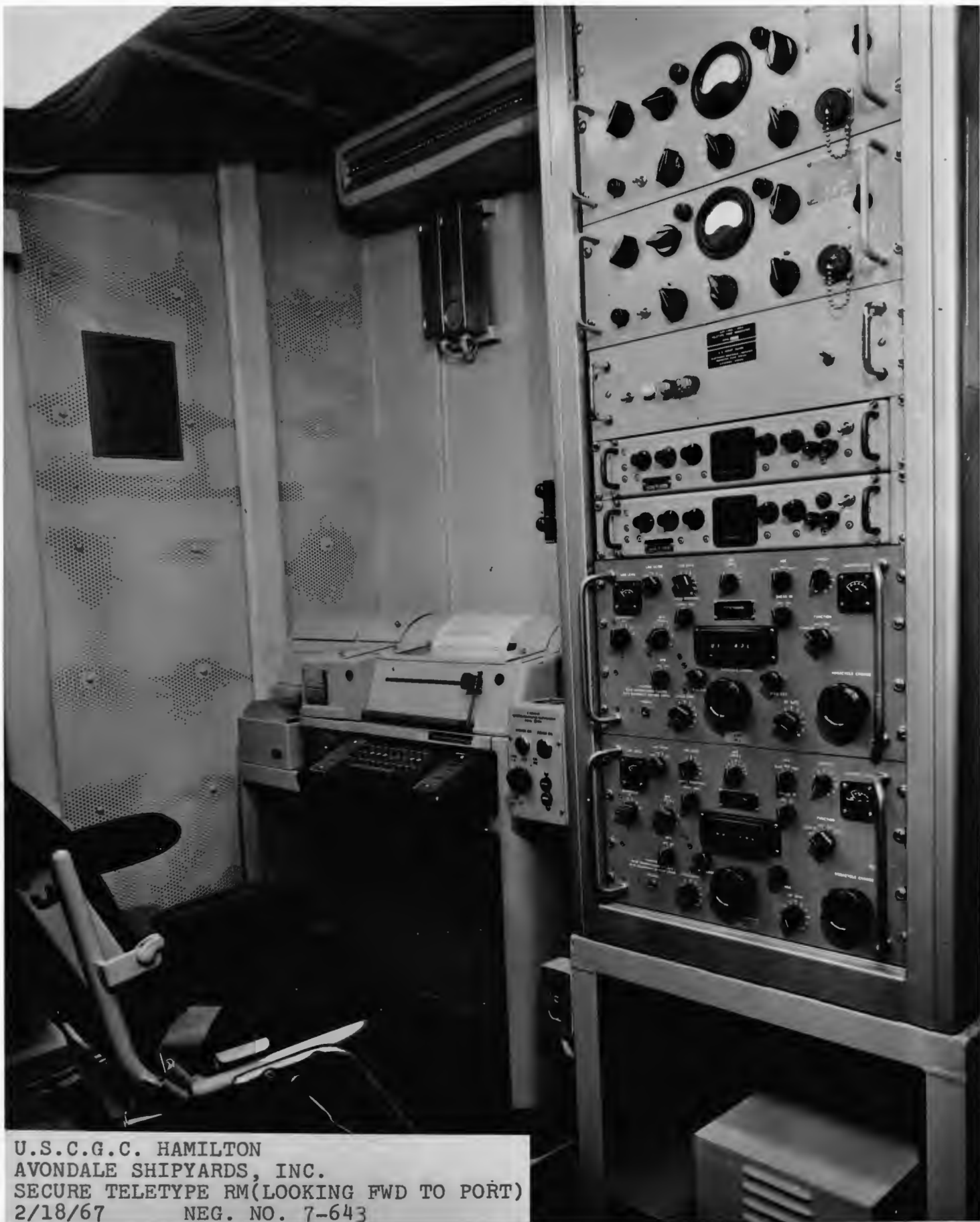
U.S.C.G.C. HAMILTON  
AVONDALE SHIPYARDS, INC.  
03 DECK BRIDGE WING  
(STB SIDE LOOKING FWD)  
2/18/67 NEG. NO. 7-662



U.S.C.G.C. HAMILTON  
AVONDALE SHIPYARDS, INC.  
OCEANOGRAPHIC WET LAB  
(LOOKING TO PORT)  
2/18/67 NEG. NO. 7-572



U.S.C.G.C. HAMILTON  
AVONDALE SHIPYARDS, INC.  
SECURE TELETYPE RM (LOOKING AFT TO STB)  
2/18/67 NEG. NO. 7-636



U.S.C.G.C. HAMILTON  
AVONDALE SHIPYARDS, INC.  
SECURE TELETYPE RM(LOOKING FWD TO PORT)  
2/18/67 NEG. NO. 7-643



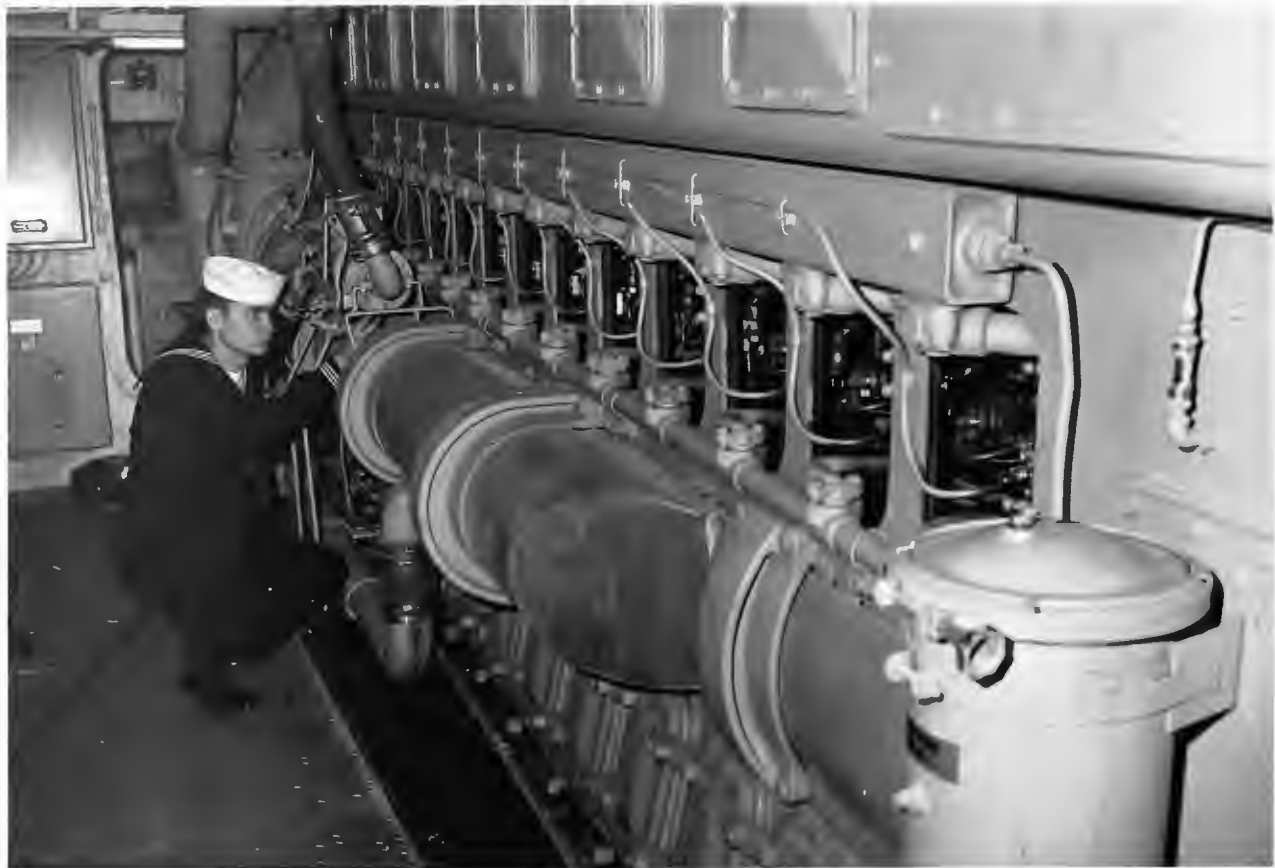
U.S.C.G.C. HAMILTON  
AVONDALE SHIPYARDS, INC.  
E.C.M. RM. (LOOKING FWD)  
2/18/67 NEG. NO. 7-653

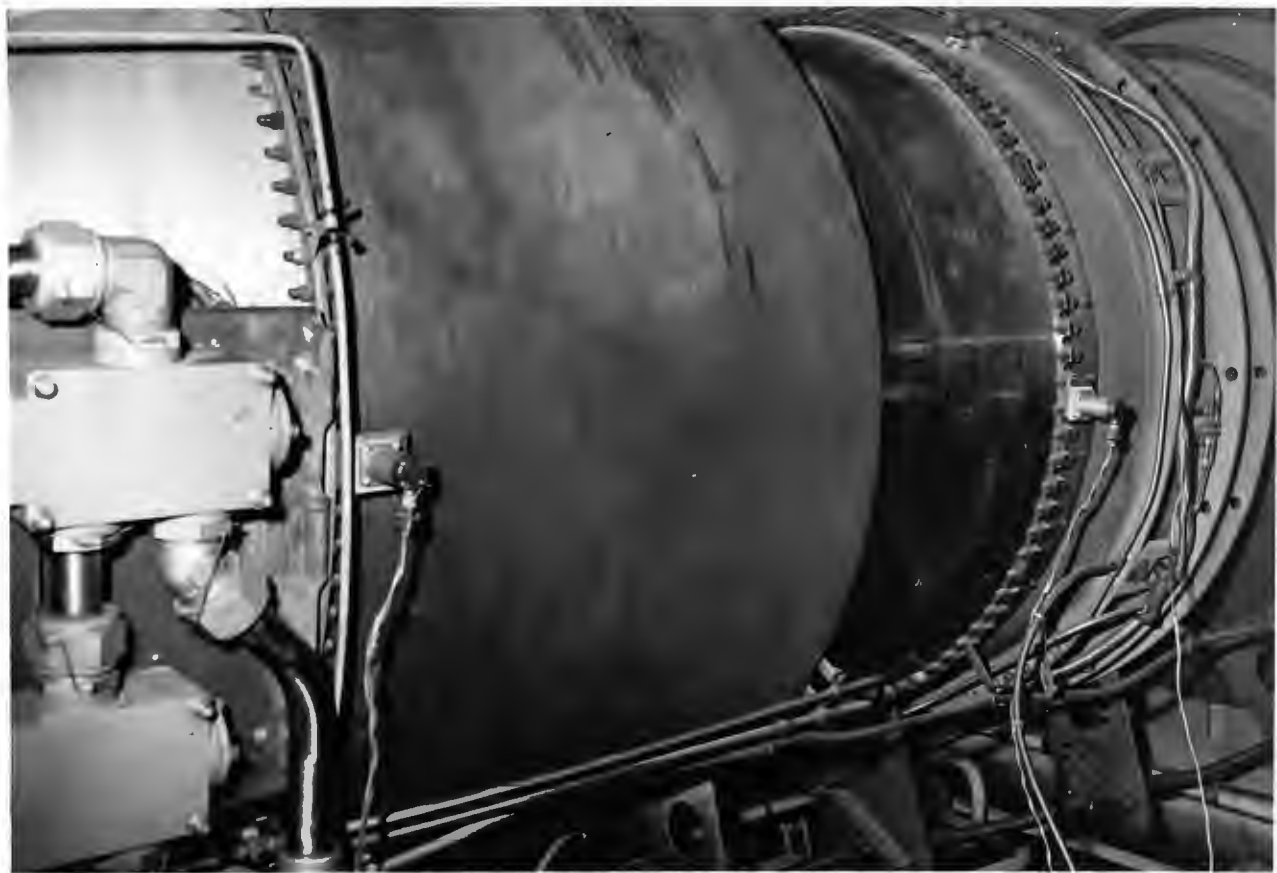


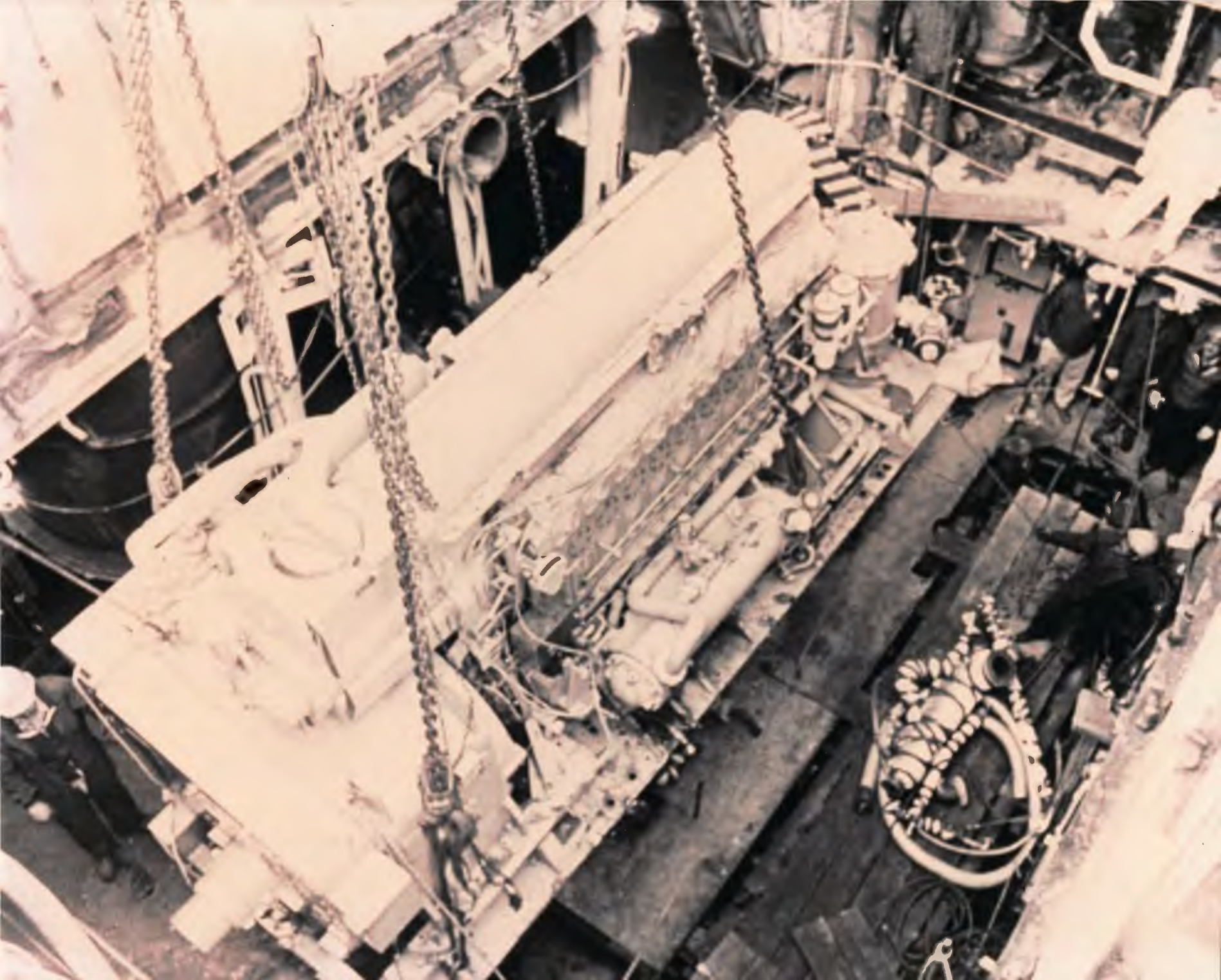
U.S.C.G.C. HAMILTON  
AVONDALE SHIPYARDS, INC.  
RADIO RM (LOOKING FWD)  
2/18/67 NEG. NO. 7-697





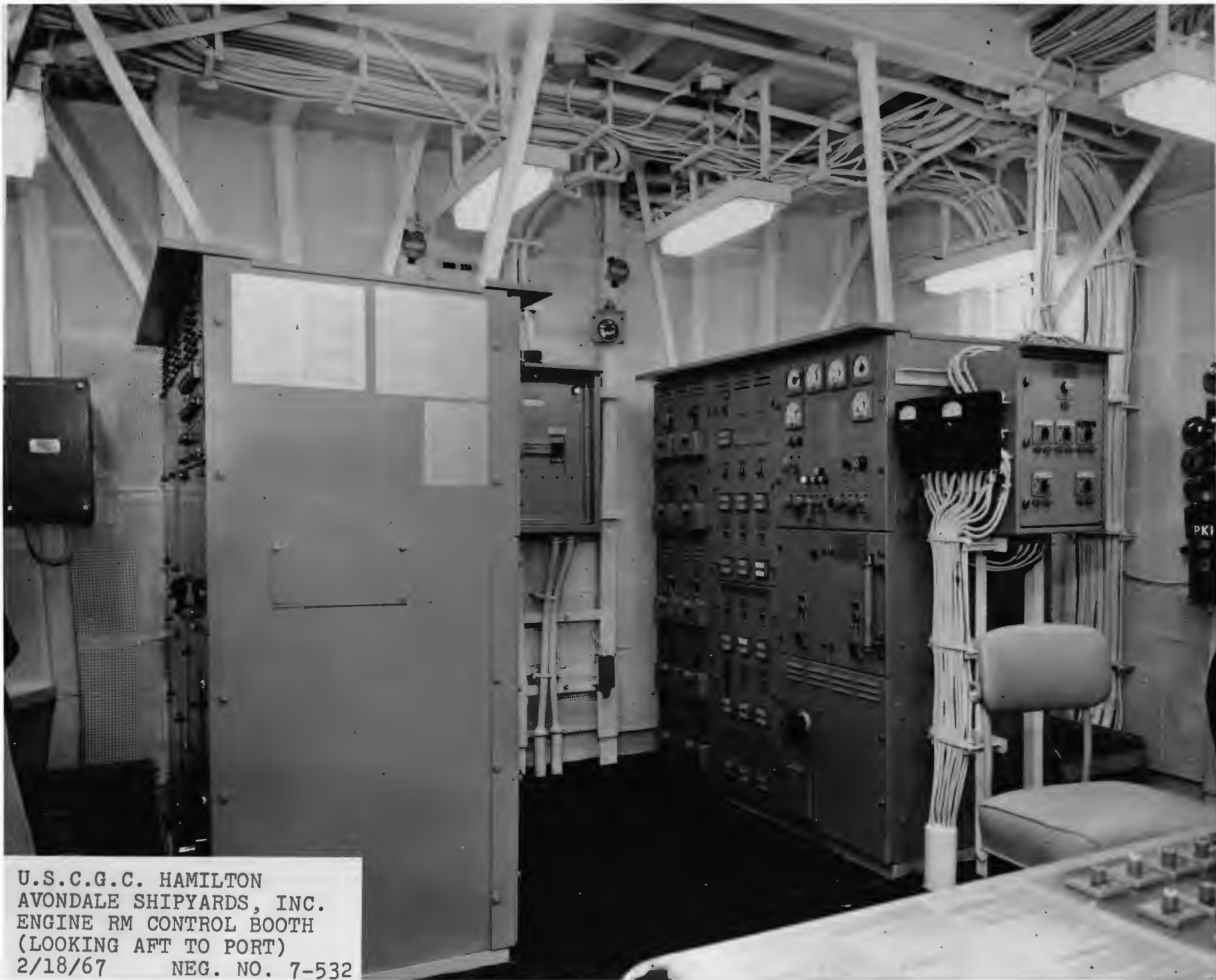




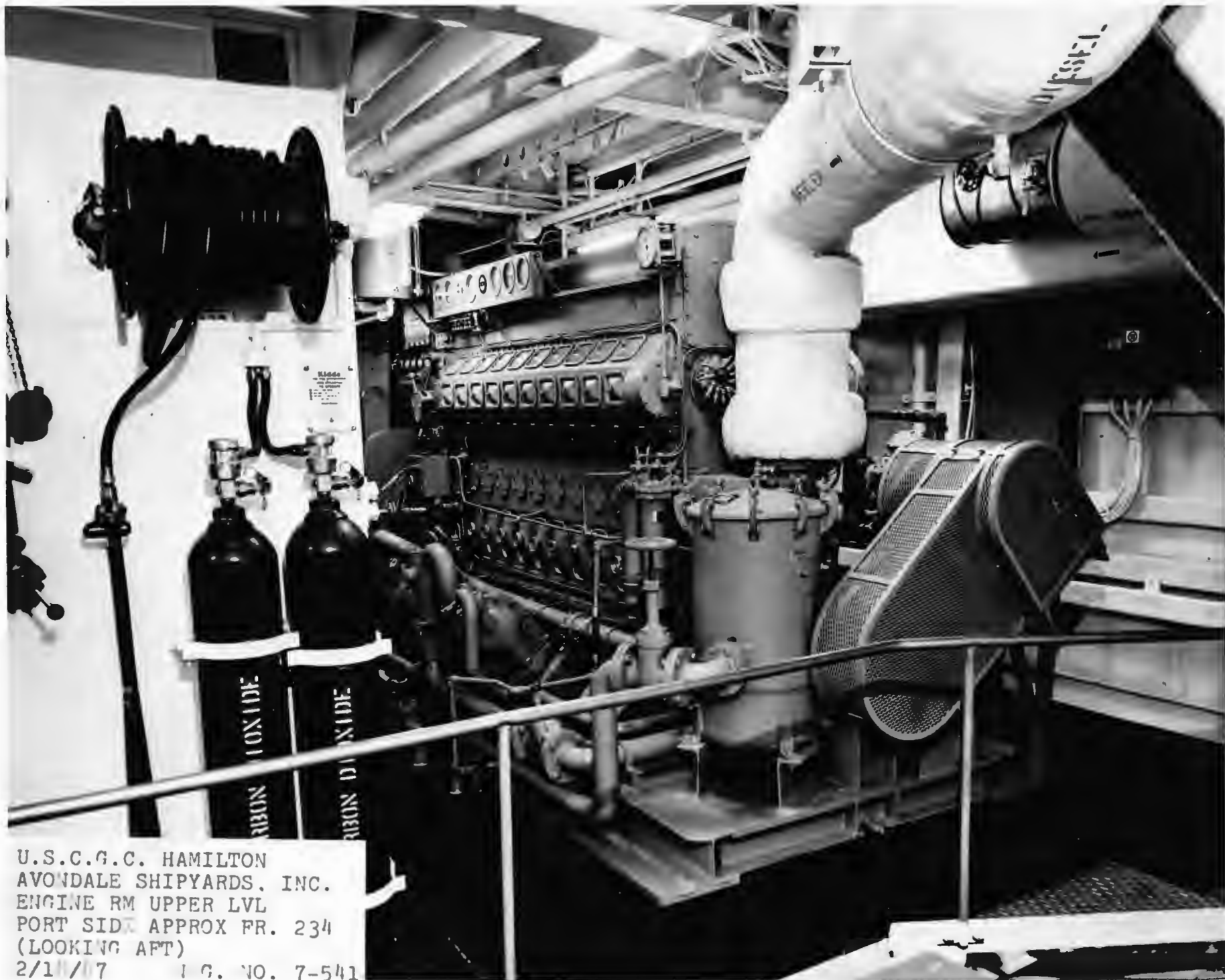




U.S.C.G.C. HAMILTON  
AVONDALE SHIPYARDS, INC.  
ENGINE RM 3'0" LVL  
PORT SIDE APPROX FR. 211  
(LOOKING AFT)  
2/18/67      NEG. NO. 7-537



U.S.C.G.C. HAMILTON  
AVONDALE SHIPYARDS, INC.  
ENGINE RM CONTROL BOOTH  
(LOOKING AFT TO PORT)  
2/18/67 NEG. NO. 7-532



U.S.C.G.C. HAMILTON  
AVONDALE SHIPYARDS, INC.  
ENGINE RM UPPER LVL  
PORT SIDE APPROX FR. 234  
(LOOKING AFT)  
2/10/07 I.G. NO. 7-541



U.S.C.G.C. HAMILTON  
AVONDALE SHIPYARDS, INC.  
CREW BERTH 2-256-2-L  
(PORT SIDE LOOKING FWD)  
2/18/67 NEG. NO. 7-587

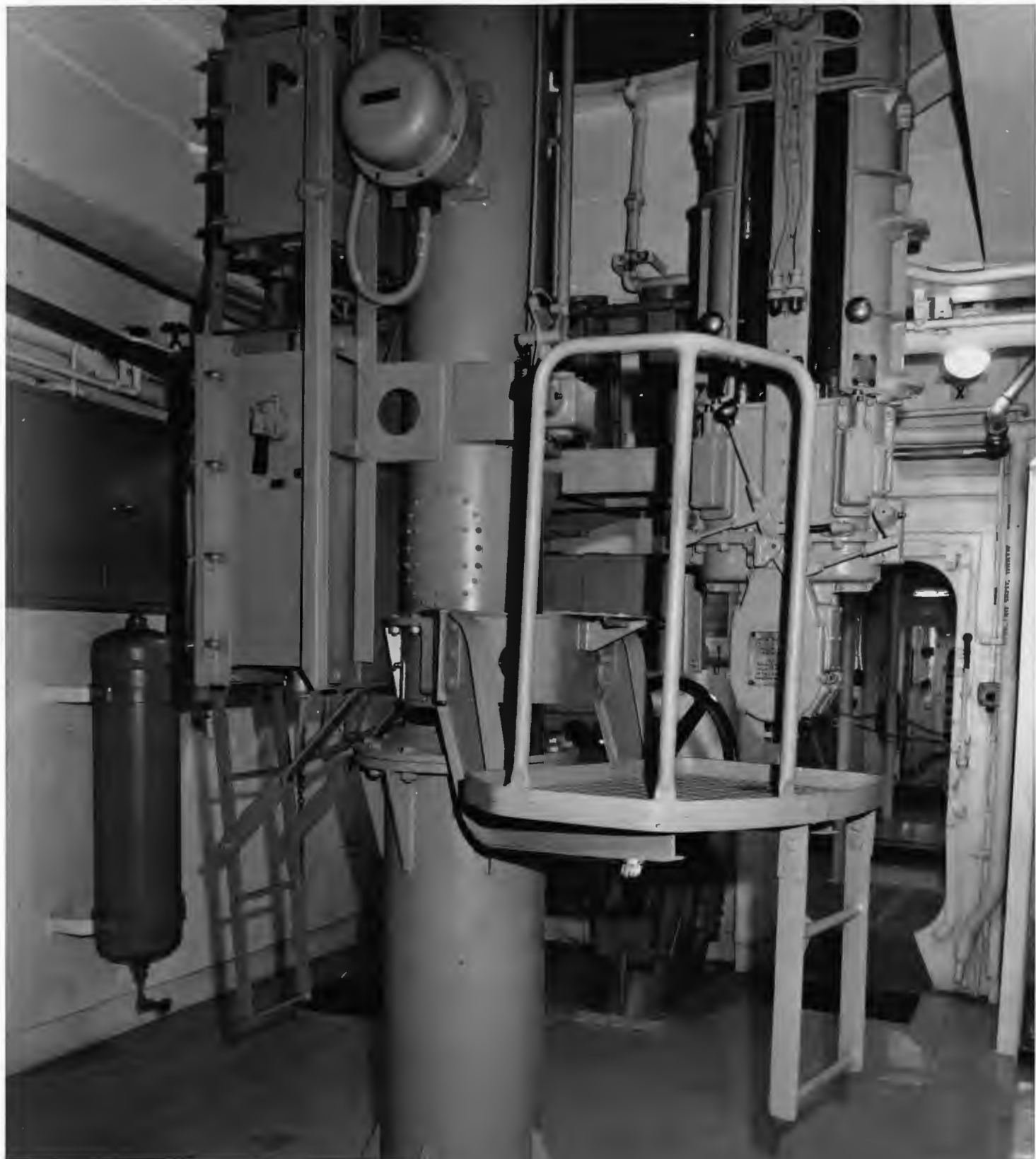




U.S.C.G.C. HAMILTON  
AVONDALE SHIPYARDS, INC.  
CREW BERTH 2-168-0-L  
(LOOKING AFT TO PORT)  
2/18/67      NEG. NO. 7-585



U.S.C.G.C. HAMILTON  
AVONDALE SHIPYARDS, INC.  
FIRE CONTROL ROOM  
(LOOKING AFT)  
2/18/67 NEG. NO. 7-670



U.S.C.G.C. HAMILTON  
AVONDALE SHIPYARDS, INC.  
5"/38 CAL. UPPER HANDLING RM  
(LOOKING AFT)  
2/18/67 NEG. NO. 7-695



U.S.C.G.C. HAMILTON  
AVONDALE SHIPYARDS, INC.  
SICK BAY (LOOKING FWD TO PORT)  
2/18/67 NEG. NO. 7-594



U.S.C.G.C. HAMILTON  
AVONDALE SHIPYARDS, INC.  
SHIPS OFFICE (LOOKING AFT)  
2/18/67      NEG. NO. 7-589

