

M153 CROWS Main Processing Unit (MPU) W11 Cable Disconnect/Reconnect Instructions

Section I. Special Instruction

1 December 2015

1-1 Scope

These special instructions are for CROWS Trained operators and maintenance personnel that have received the W11 cable disconnect and reconnect training from a CROWS TACOM certified Field Service Representative (FSR) only. Note: this procedure is normally only performed by CROWS FSR from various vehicle platforms.

1-2

WARNING

To prevent personal injury and/or damage to the CROWS components, **do not** disconnect W11 cable with power on the Display Control Panel (DCP). Ensure the vehicle switch is off and the CROWS power is off prior to disconnecting the W11 cable. **Do not** place the disconnected W11 cable where it could pose a shock hazard to personnel and equipment. **Do not** place disconnected W11 cable near water source and if available, place caps on the cable and MPU connectors to prevent any accidental contact with personnel, equipment or water source. **Do not** disconnect the W11 cable from the batteries, **only from the MPU**.

1-3 Purpose

This instruction is for the disconnection of the W11 cable. This is a preventive/precaution measure to prevent the vehicle batteries from draining when vehicles are not started for an extended period.

1-4 Procedures

Ensure the power is off on the DCP; disconnect the W11 cable from the 1J3 connector on the Main Processing Unit from the operator seat. Ensure the cable is secure to prevent damage to the end connector. See figure 1, 2, 3 and 4 for illustration of the DCP, Operator's view and MPU. To reconnect the W11 to the 1J3 connector, align the connection and turn the end connector until it is secure and no red is showing on the 1J3 connector.

Fig 1

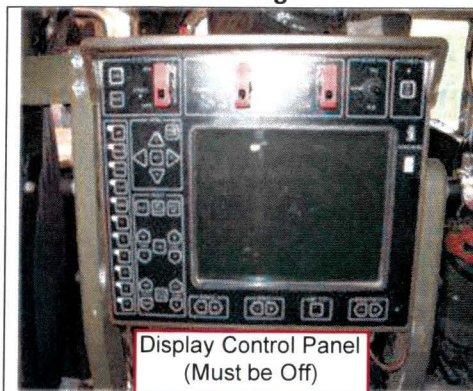


Fig 2

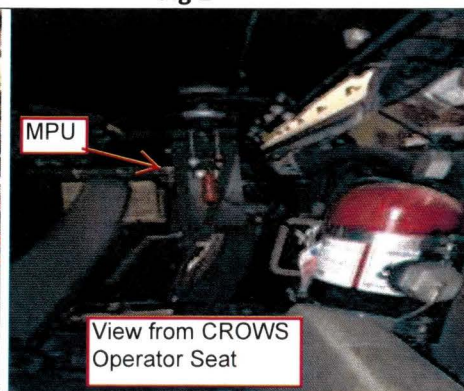


Fig 3

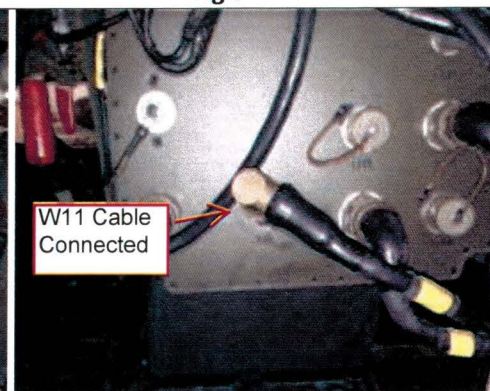


Fig 4

