



Critical Communications Between CG Vessels and the FV MARY B II

January 8, 2019

**Positions of vessels are not precise and not all
communications will be played in this
presentation.**



Critical Communications MARY B II



8:01 PM PST - Initial Coast Guard attempts to contact the vessel offshore with deteriorating bar conditions. Vessel Automatic Identification System was transmitting as BESS CHET

0401	STAYB	Fishing vessel Bess Chet, Fishing vessel Bess Chet. This is coast guard station Yaquina bay on Channel 16	
		Over.	CH16
0402	47266	Station 266, request updated Stonewall buoy height.	CG121
0402	Mobile 1	47266, Mobile 1. Updated buoy height is as of, 650 14.4 at 12 seconds. Over.	CG121
0402	47266	Roger	CG121
0402	STAYB	Fishing vessel Bess Chet, Fishing vessel Bess Chet. This is coast guard station Yaquina bay on Channel 16.	
		Over.	CH16
0403	Tower	Mobile 1 tower, on 121	CG121
0403	Mobile 1	Tower, mobile 1, go ahead.	CG121
0403	Tower	Mobile 1, tower. I just looked through the, the log here to see if I saw the Bess Chet. That was signed out at all	
		And I see uhm nothing from this year. The only thing I can see if from uhm April of 2018. For them in the	
		book as of now. Over.	CG121
0403	Mobile 1	Roger, as per the uh their last time stamp on their last AIS transmission they had, which was over an hour ago.	
		We think it's the Best Chet, Bess Chet. Uh which was off of Seal rock. If you wouldn't mind trying to hail out	
		to Them, I know I've got the station trying to hailing out to them right now. See if you maybe can get ahold of	
		them, as well. Over.	CG121
0403	Tower	Mobile 1, tower. Roger.	CG121



Critical Communications MARY B II

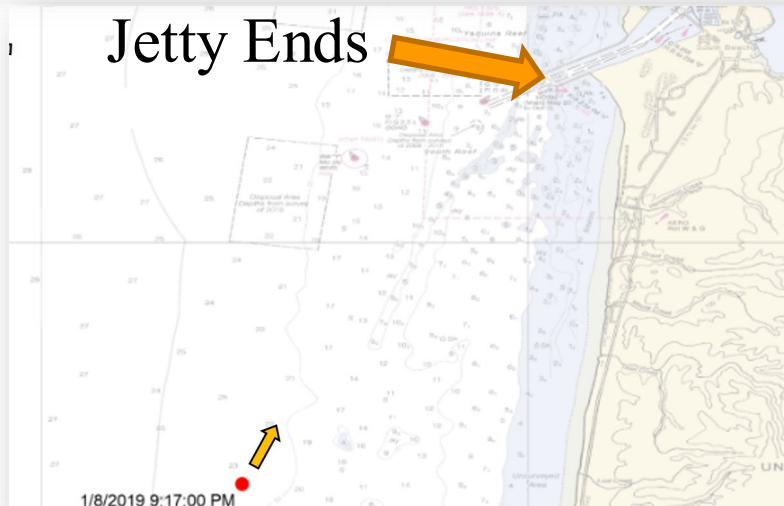


0503	STAYB	Fishing vessel Bess Chet, Fishing vessel Bess Chet. Coast Guard Station Yaquina Bay on channel 16. Over	CH16
0504	STAYB	Fishing vessel Bess Chet, Fishing vessel Bess Chet. Coast Guard Station Yaquina Bay on channel 16. Over	CH16
0505	Tower	Fishing vessel Bess Chet, Fishing vessel Bess Chet. This is Yaquina Bay Coast Guard tower on channel 16. Over.	CH16
0506	Mary B II	Coast Guard Station Yaquina Bay, fishing vessel Mary B II. Standby.	CH22
0507	STAYB	Fishing vessel Mary B II, this is Coast Guard Station Yaquina bay. Go ahead. Over	CH22
0507	Mary B II	Yeah, petty officer just called me on the phone, wanted me to make sure I had comms with you there. For crossing The bar there. Were about an hour and 15 minutes away er.	CH22
0507	STAYB	Mary B. Station Yaquina Bay. Roger captain. Coast Guard standing by 16 and 22.	CH22
0507	Mary B II	Yup, standing by.	CH22
0508	STAYB	Fishing vessel Bess Chet, Fishing vessel Bess Chet. This is Coast Guard Station Yaquina Bay on channel 22.	CH22
0511	Tower	Fishing vessel Mary B, this is Yaquina bay coast guard tower on channel 22 alpha. Over.	CH22
0511	Mary B II	Yeah, Mary B. Standing by.	CH22
0511	Tower	Mary B, Coast Guard Tower, just want to confirm that that is uh you coming from the uh Southwest, heading Towards the Yaquina bay bar entrance. Over.	CH22
0511	Mary B II	Yeah, I'm possibly uh 5.4 miles from the inlet here.	CH22

0512	Tower	Mary B, Coast guard tower, roger. That uh, request to know how many Persons on board you have and uh The current speed you're making? Over.	CH22
0512	Mary B II	Uhm were making about 6 knots, 6.5 knots and uh 3 POB's there.	CH22
0512	Tower	Mary B. Coast Guard tower. Roger that captain, uh if you could continue to monitor uh channel 22 alpha	CH22



CG Exhibit 038



Red dot indicates approximate position of the FV BESS CHET/MARY B II via NOAA Vessel Monitoring System data from MARY B II LLC



Critical Communications MARY B II



9:26 PM PST - Coast Guard talks to FV MARY B II about speed and position

0526	Mobile 1	Mary B, Coast Guard Yaquina bay. We uh got a couple of assets headed out to look at the bar for when you	
		Cross. Looks like you're a couple South right now.	CH22
0526	Mary B II	Yeah. Yeah, I'm about 3.5 miles south of the inlet.	CH22
0526	Mobile 1	Roger, good copy. What's the uh max speed of your vessel?	CH22
0526	Mary B II	What's that?	CH22
0526	Mobile 1	What's uh the maximum speed you can make on you vessel?	CH22
0526	Mary B II	7 knots.	CH22
0526	Mobile 1	Roger, copy. 7 knots. Alright, well be uh standing by on 22 were having a couple life boats out for ya. Uhm,	
		Might be able to provide some illumination on the bar tonight.	CH22
0526	Mary B II	Yeah, I got you good skipper. Alrighty, well. We'll give a check when we get closer there.	CH22
0527	Mobile 1	Roger, sound good. Well just uh keep comms with you here on channel 22.	CH22
0527	Mary B II	Yup. Roger, roger. We're standing by channel 22 and 16.	CH22
0527	Mobile 1	Yaquina Bay assets, Mobile 1. I don't know if you just copied my traffic with Mary B, but their max speed	
		Is 7 knots. Over.	CG121



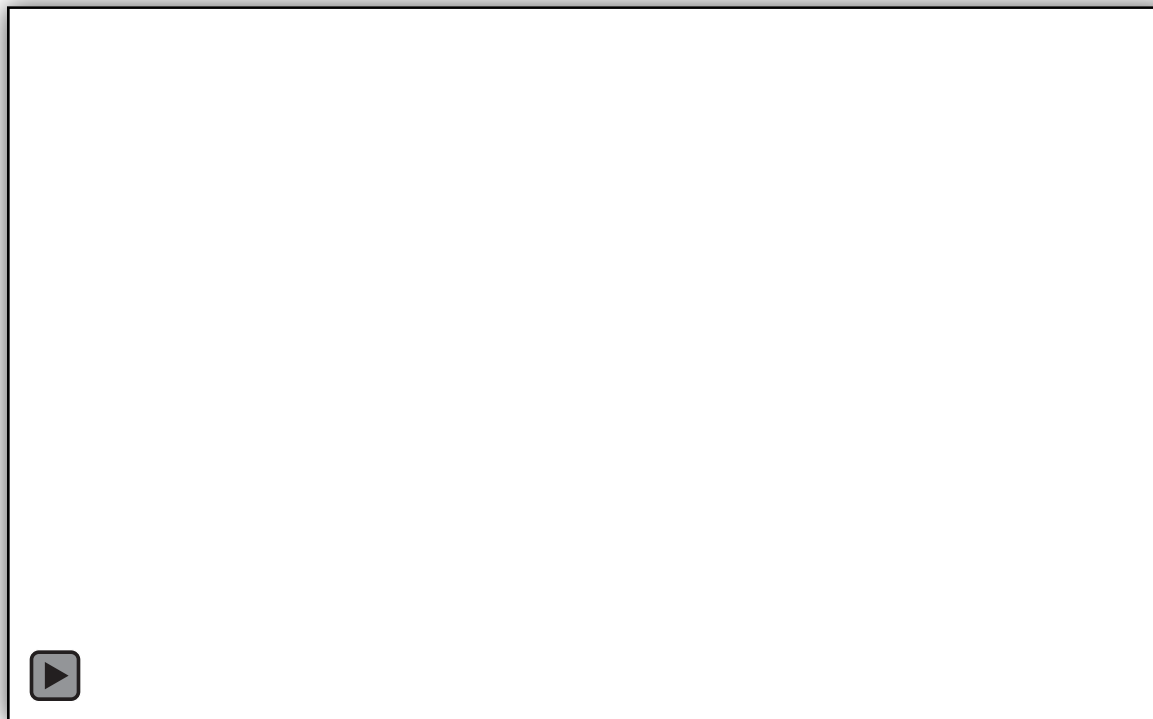


Critical Communications MARY B II



Vessel 1 = FV MARY B II

Vessel 2 = CG VICTORY 52 Foot Motor Life Boat



**Overview of Movements of the
Coast Guard MLB Victory and the FV MARY B II, January 8, 2019
developed from X Band Marine Radar at Oregon State University**



Critical Communications MARY B II



CG COMMUNICATIONS BETWEEN VICTORY , MARY B II AND CG 47266

Times in the left column are in Universal Time (+7)

0546	47266	Victory, 66. Yeah roger, we did just have about another 14 foot break on the south side, right by number 4. Seems pretty consistant on that south side. Um and then it looks like when it does break out uh by number, Where number 3 would be it looks like its right in the center of the channel. Over.
0546	Victory	Roger
0546	Victory	Fishing vessel Mary B. Fishing vessel Mary B. Motor lifeboat Victory, channel 22 alpha. Over.
0546	Mary B II	Yeah Mary B standing by.
0546	Victory	Mary B, Victory. Roger captain, uh Yeah we just passed over the series, right around where buoy 3 should Be it was uh 16 foot, inside of us it broke across the channel. Uh now were starting to time the series. So In between the series it's a good run, when we escorted the last straw across earlier they uh, had a pretty easy Go at it. However when the series does come through, it is breaking all the way across. Our plan will be to uh, Stay off of your stern during your transit across the bar. If you need to abort, turn, or back, do whatever you need to do, and we will stay out of your way. And Also, just want to remind you that the safe navigation and Operation of your vessel is your responsibility. And just cause we're out here does not mean you need to cross. Over.
0547	Mary B II	Yeah I got you good, I got you good Skipper. Alrighty well, we'll uh well hang outside here, ya know just Check out a couple, couple sets here before we cross. Over.

09:46 PM (2146 HRS) PST

CG Exhibit 038





Critical Communications MARY B II



CG COMMUNICATIONS BETWEEN VICTORY , MARY B II AND CG 47266

Times in the left column are in Universal Time (+7)

0547	Mary B II	Yeah I got you good, I got you good Skipper. Alrighty well, we'll uh well hang outside here, ya know just Check out a couple, couple sets here before we cross. Over.
0547	Victory	Mary B, Uh victory. Roger we'll inform you the timing sop the hill has got a timing, we'll be calling the sets To them On 22 alpha. well be putting up more illumination flares, just as we cross the bar. Uh, it was breaking Pretty heavily into the channel from the south pinnacle, so the south side of the channel sop earlier when we were coming back in right and up the middle of the channel seems to be the best bet. The 47 foot motor lifeboat Is sitting center channel, they'll be flashing their blue lights once you get near the bar they will move off To the North, to give you plenty of room to get in. And we will both stay out of your way. Over.
0548	Mary B II	Yeah roger, roger Coast Guard. Got you good.
0549	47266	Victory, 66. Looks like were in that lull period right now maybe. Uh maybe after this next series rolls through Get a little better timing on it. Over,

09:46 PM (2146 HRS) PST

CG Exhibit 038





Critical Communications MARY B II



VICTORY

Mary B. Uh Victory. We're holding off your stern here. And it looks like you're going ahead and making your Approach, watching the buoy it looks like this is a good time. So well be sticking off your stern. Over.

POSITION APPROXIMATE

2019-01-08 22:00:01

MARY B II

Yeah Roger roger

POSITION APPROXIMATE

09:57 PM (2157 HRS) PST

CG Exhibit 038

MARY B II

VICTORY

Positions correlated with time are approximate due to limitations in determining precise vessel positions





Critical Communications MARY B II



CG COMMUNICATIONS BETWEEN VICTORY AND CG 47266

47266	Vic, 66. Are you guys making your way in?
Victory	Affirmative. He's coming in slow though.
47266	Roger. Let us know when you're inside three. So we can put that 127 up.
Victory	Uh go ahead and start putting up a lot of them, this guy is not riding good in the water. Like he's not a very stable boat, hes got on outrigger halfway out, and we uh had a dud 127. Over.
47266	Roger
47266	Vic, 66, that was a bad angle. We're going put another one up, and we'll continue putting them up until we uh are out. Do you guys Have any left, to out up once you're in past three?
Victory	Were grabbing some now. Over.
47266	Vic, 66. Say again your last.
Victory	66, that's affirmative. We're going to put one off at three. When you see ours go up, put yours up. Over.
47266	Mary B, This is the 47266 inside the jetty tips here.
Mary B II	Yep, Standby.

NOTE: "127" is a reference to a hand launched rocket flare that provides night illumination from a slowly descending parachute

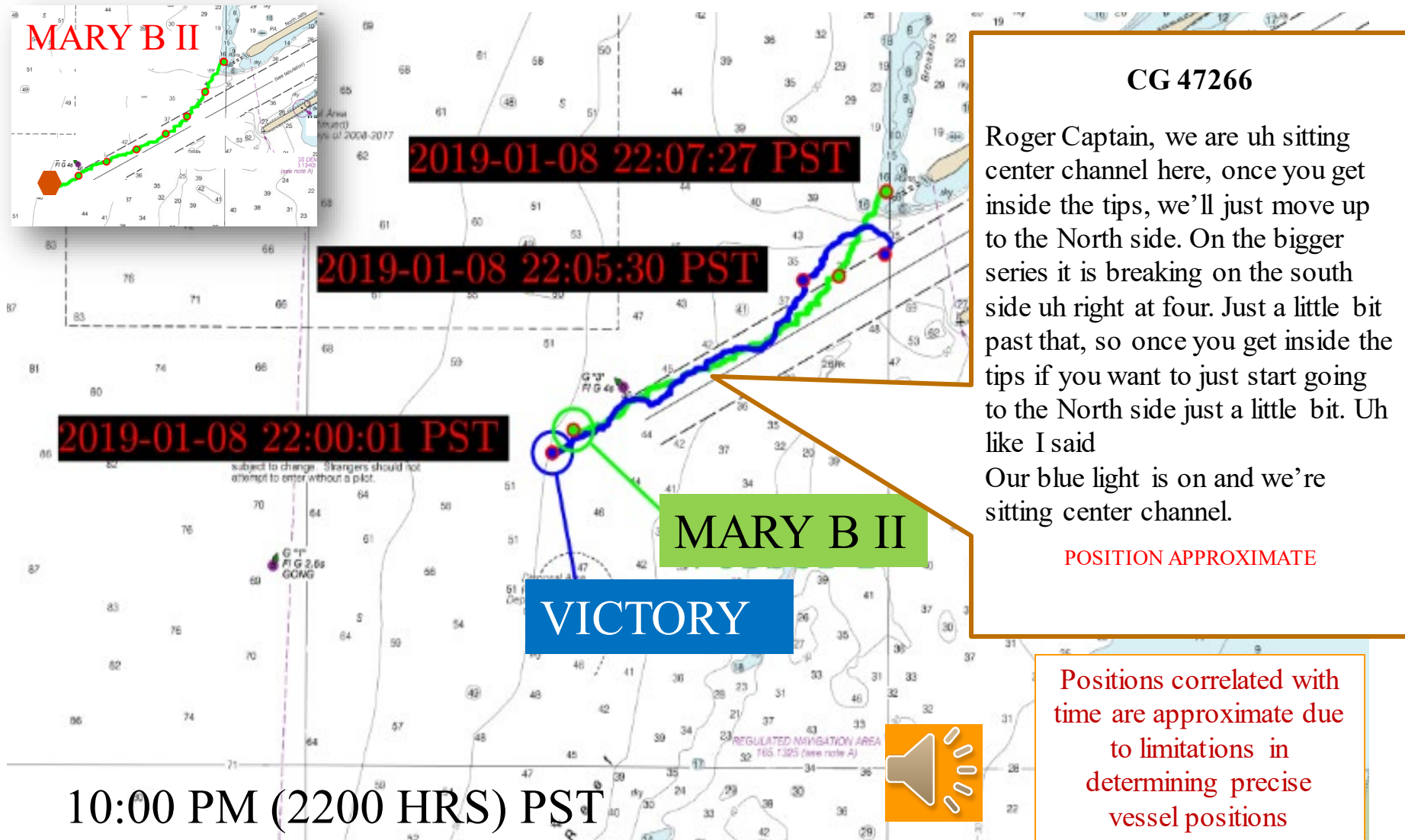
09:57 PM (2157 HRS) PST

CG Exhibit 038

Positions correlated with time are approximate due to limitations in determining precise vessel positions



Critical Communications MARY B II





Critical Communications MARY B II



MARY B II

Yeah, I see your blue light there, I'm working my way to the North side here now.

2019-01-08 22:07:27 PST

2019-01-08 22:05:30 PST

2019-01-08 22:00:01 PST

MARY B II

Yeah I got you guys, alright. Lemme pay attention here, cause so many vessels here now I got AIS going off on my Plotter here. Clogging it up.

10:00 PM (2200 HRS) PST

CG Exhibit 038

CG 47266

Roger captain, uh I advise that you don't work over to the North too soon. Uh it is starting to break on that North side on the dumping grounds. And there is also a wrap around break on the North side of the channel. Over.

MARY B II

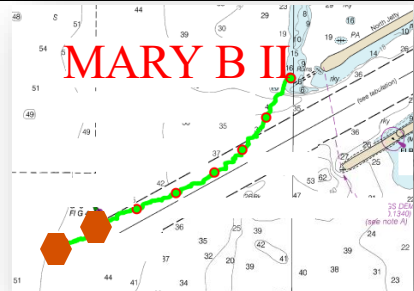
VICTORY

Positions correlated with time are approximate due to limitations in determining precise vessel positions





Critical Communications MARY B II



2019-01-08 22:07:27 PST

2019-01-08 22:05:30 PST

2019-01-08 22:00:01 PST

MARY B II

VICTORY

10:01 PM (2201 HRS) PST

CG Exhibit 038

CG 47266

Victory, 66. How far inside of three are you guys right now? Over.

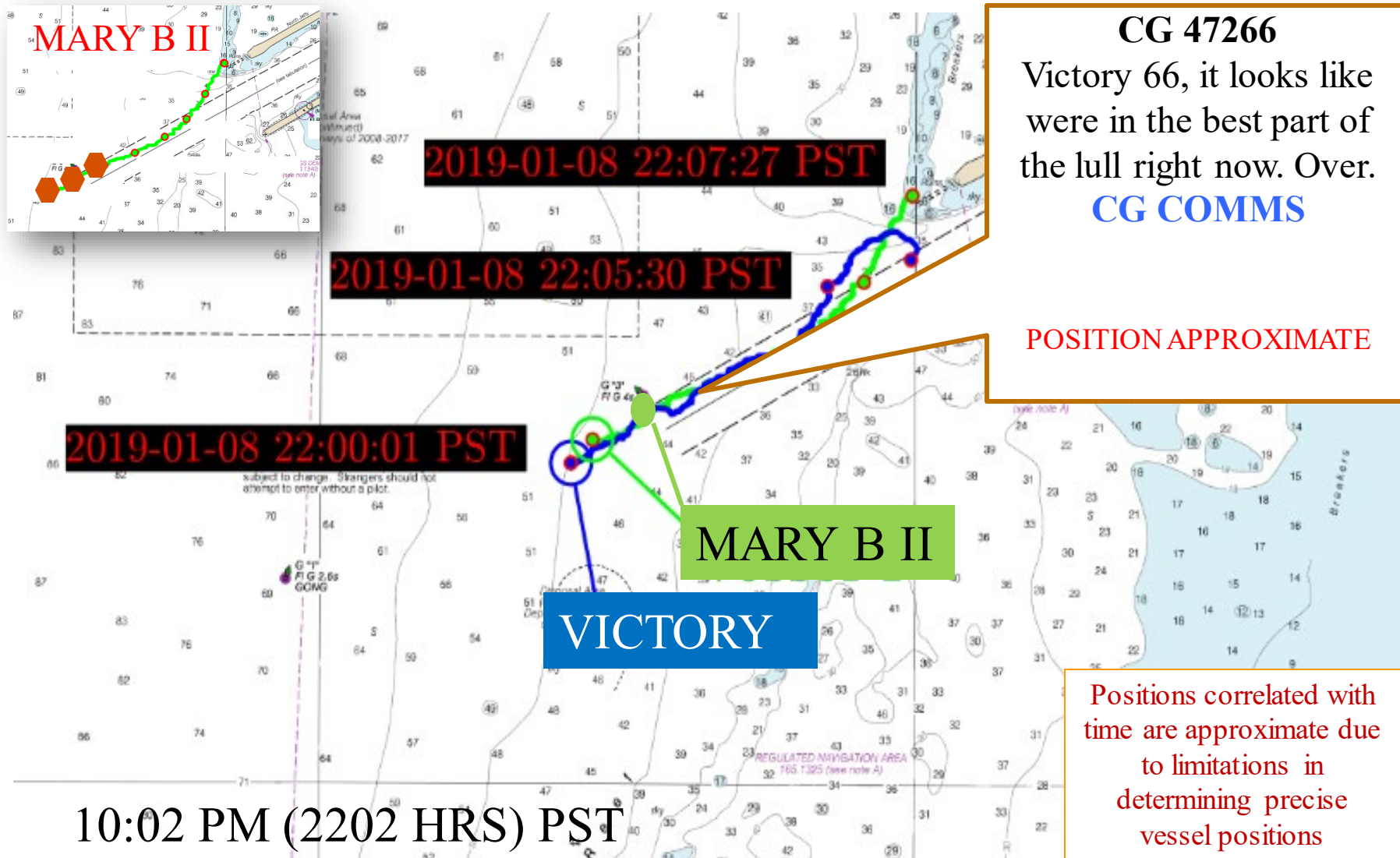
CG COMMS

POSITION APPROXIMATE

Positions correlated with time are approximate due to limitations in determining precise vessel positions



Critical Communications MARY B II





Critical Communications MARY B II



VICTORY

66, Victory. This guy is going about as fast as he can. He is Very slow, over. Two knots.

CG COMMS

POSITION APPROXIMATE

2019-01-08 22:07:27 PST

2019-01-08 22:05:30 PST

2019-01-08 22:00:01 PST

MARY B II

VICTORY

CG 47266

Roger how far inside of three are you? Over

CG COMMS

POSITION APPROXIMATE

Positions correlated with time are approximate due to limitations in determining precise vessel positions

10:03PM (2203 HRS) PST

CG Exhibit 038



Critical Communications MARY B II



VICTORY 1

66, Victory. This guy is going about as fast as he can. He is Very slow, over. Two knots.

POSITION APPROXIMATE

CG 47266 2

Roger how far inside of three are you? Over
POSITION APPROXIMATE

CG 47266 4

Roger
POSITION APPROXIMATE

VICTORY 3

Uh 66 victory, were about 10 yards inside three. Uh and we are not making very good speed. Over.

POSITION APPROXIMATE

MARY B II

VICTORY

CG COMMS

10:03PM (2203 HRS) PST

Positions correlated with time are approximate due to limitations in determining precise vessel positions



Critical Communications MARY B II



VICTORY

16 Footer building up
behind you captain
POSITION APPROXIMATE

CG 47266

Victory 66. Uh just
so you know uh were
on our last 127 that
we have here.

CG COMMS

POSITION APPROXIMATE

MARY B II

VICTORY

2019-01-08 22:00:01 PST

2019-01-08 22:05:30 PST

2019-01-08 22:07:27 PST

10:04PM (2204 HRS) PST

CG Exhibit 038

Positions correlated with
time are approximate due
to limitations in
determining precise
vessel positions





Critical Communications MARY B II



VICTORY

We don't have anymore
on deck, just wait until
last minute when were
trying to cross. Over.

POSITION APPROXIMATE

2019-01-08 22:07:27 PST

22:05:30 PST

2019-01-08 22:00:01 PST

subject to change. Skippers should not
attempt to enter without a pilot.

MARY B II

VICTORY

CG 47266

Victory, 66. Roger.

POSITION APPROXIMATE

10:04PM (2204 HRS) PST

CG COMMS

CG Exhibit 038

MARY B II



Critical Communications MARY B II



VICTORY

Stop for a second, were working this.....

19-01-08 22:07:27 PST

CG 47266

. Vic, 66. It's looking like the end of that lull right now. This is gonna be the smaller series, uh which is gonna be around three to five minutes, And that bigger series is gonna be right behind that. Uh if he's not going to make it in from there might want to think about going bow into the seas, would be better. Or just trying to push all The way in.

POSITION APPROXIMATE

2019-01-08 22:00:01 PST

MARY B II

VICTORY

10:05PM (2205 HRS) PST

CG COMMS

Positions correlated with time are approximate due to limitations in determining precise vessel positions



Critical Communications MARY B II



VICTORY

Mary B, This is the set
right here. This is the set.
Over

2019-01-08 22:07:27 PST

CG 47266

Victory, 66. Roger.
POSITION APPROXIMATE

2019-01-08 22:00:01 PST

MARY B II

VICTORY

MARY B II

Yeah roger roger, I see it.

10:05PM (2205 HRS) PST

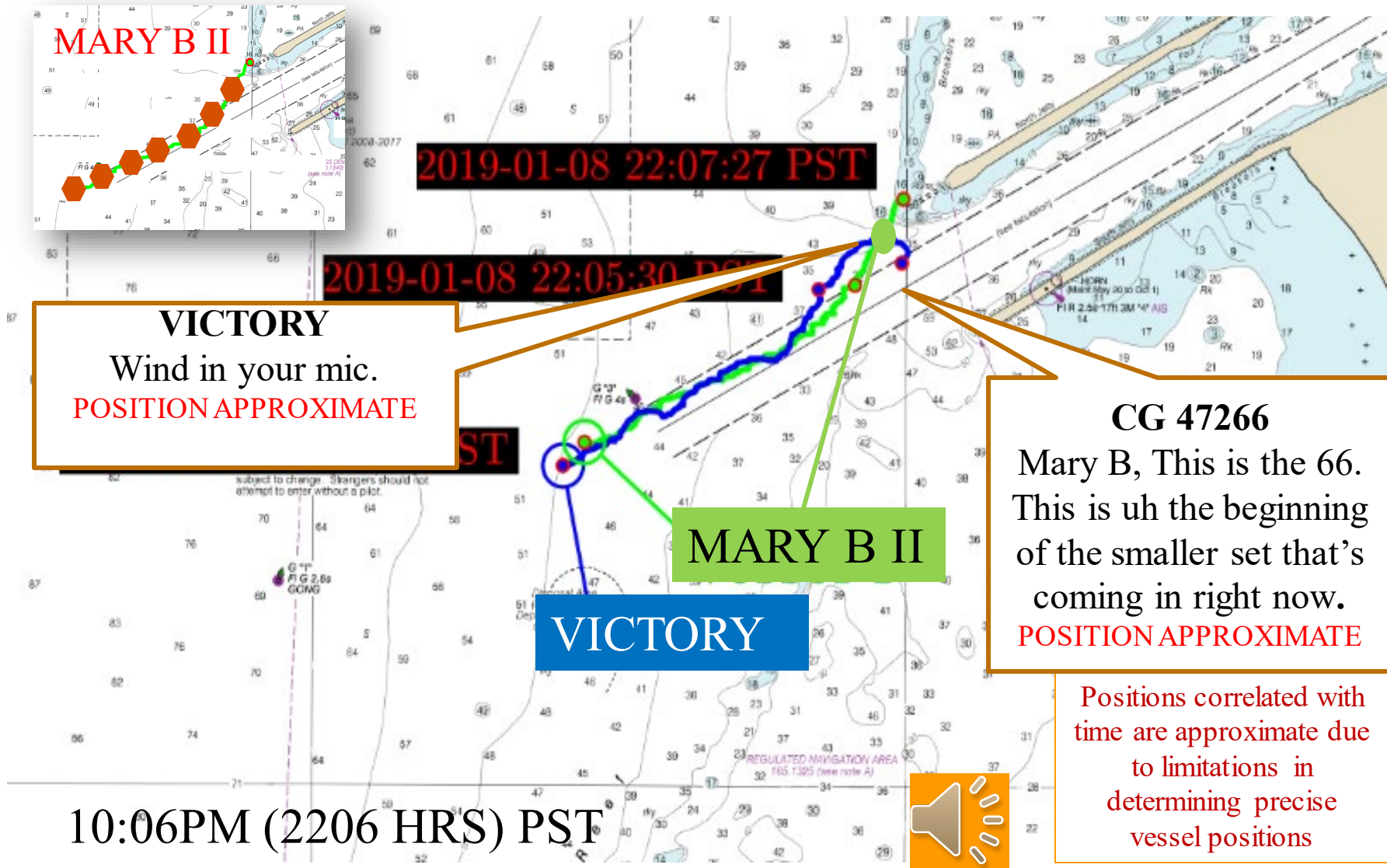


Positions correlated with
time are approximate due
to limitations in
determining precise
vessel positions

CG Exhibit 038



Critical Communications MARY B II





Critical Communications MARY B II



VICTORY

Hard, you are 3 boards
North. Over. 3 boards North!

Come South! Come to
Starboard! Come to
Starboard!

Mary B, Come to Starboard!

POSITION APPROXIMATE

2019-01-08 22:07:27 PST

CG 47266

You're looking like your
heading very, very far north
right now. You might want to
come south just a little bit.

Mary B, 66 did you copy my
last?

POSITION APPROXIMATE

2019-01-08 22:00:01 PST

MARY B II

VICTORY

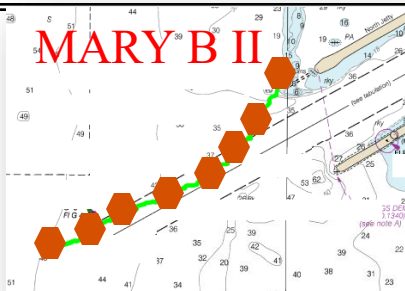
10:06PM (2206 HRS) PST



Positions correlated with
time are approximate due
to limitations in
determining precise
vessel positions



Critical Communications MARY B II



VICTORY

Sector North bend, launch a helicopter to respond to possible people in the water at the Yaquina Bay bar.
POSITION APPROXIMATE

2019-01-08 22:07:27 PST

8 22:05:30 PST

MARY B II

VICTORY

CG 47266

Victory, he's on the north side of the Jetty.

POSITION APPROXIMATE

10:07 PM (2207 HRS) PST

CG COMMS

Positions correlated with time are approximate due to limitations in determining precise vessel positions



Critical Communications MARY B II



2019-01-08 22:07:27 PST

VICTORY

Sector North bend, launch a helicopter to respond to possible people in the water at the Yaquina Bay bar.

CG SEC NORTH BEND

. Roger is the vessel rolled over? Over.

MARY B II

VICTORY

Capsize, lost visual. Right on the North reef there. We are launching third boat from the station as well.

Positions correlated with time are approximate due to limitations in determining precise vessel positions

10:07 PM (2207 HRS) PST

CG COMMS

CG Exhibit 038