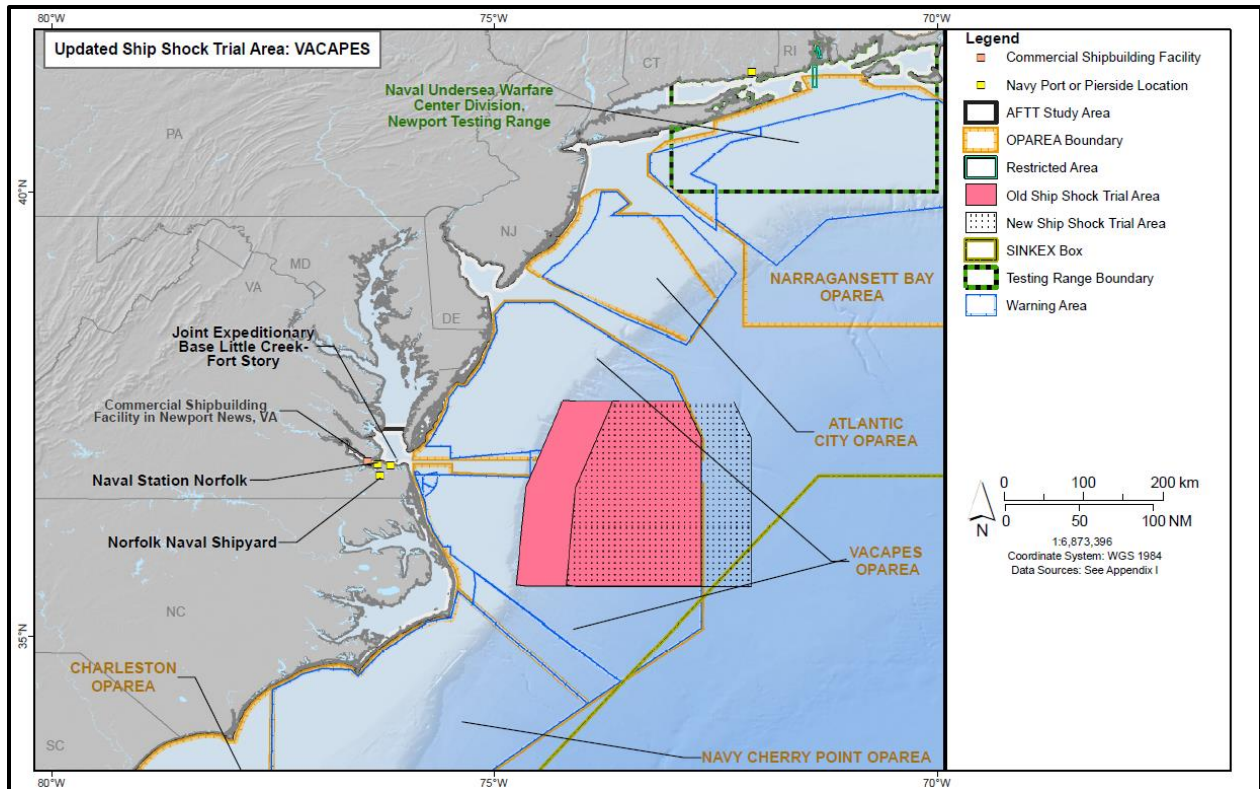
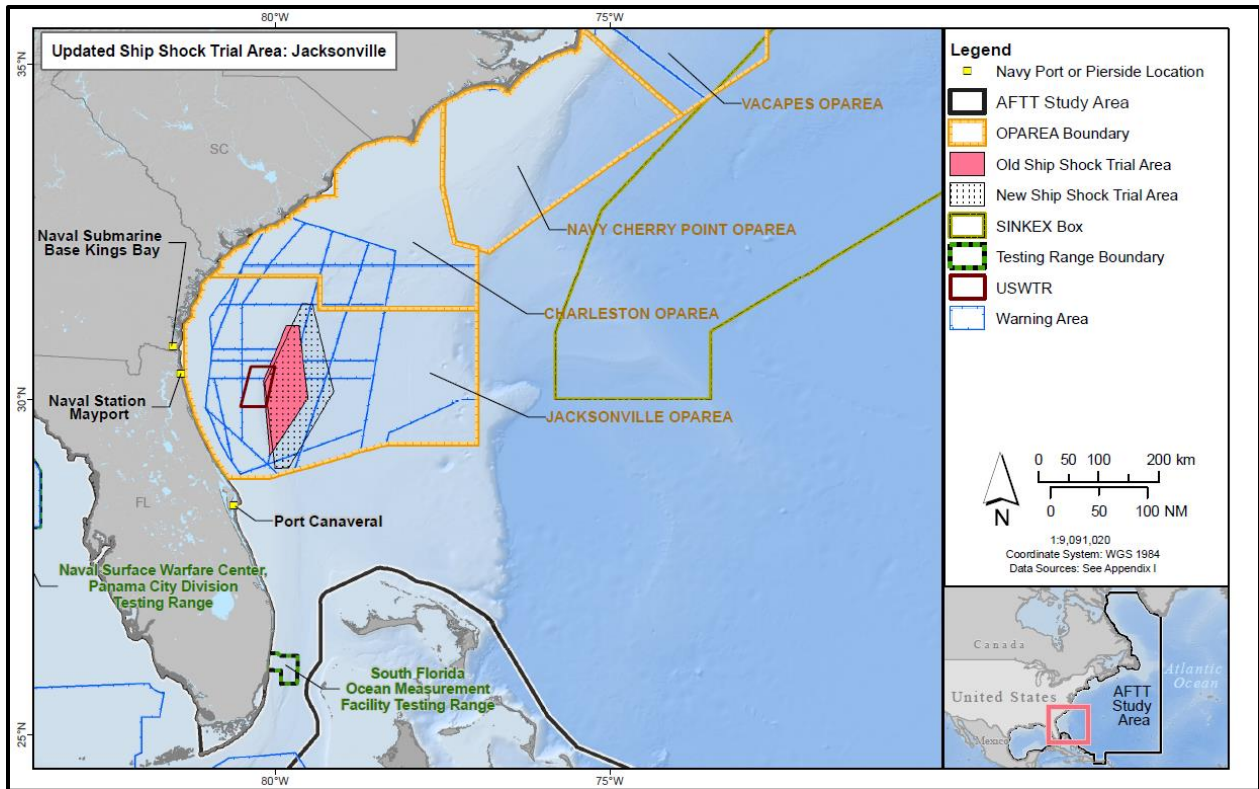


1. Revised Virginia Capes (VACAPES) Operations Area (OPAREA) and Jacksonville (JAX) OPAREA Ship Shock Trial Areas - This figure replaces Figure 5.4-5 in the Atlantic Fleet Training and Testing (AFTT) Final Environmental Impact Statement/Overseas Environmental Impact Statement (EIS/OEIS).

For details on the VACAPES OPAREA and JAX OPAREA Ship Shock Trial Area revisions see figures 2 and 3 below.



2. VACAPES OPAREA Ship Shock Trial Area (showing shift) – This figure shows the original location of the VACAPES OPAREA Ship Shock Trial Area and the shift to the current location of the Ship Shock Trial Area. In response to a comment received by National Marine Fisheries Service during the public comment period for the Marine Mammal Protection Act Proposed Rule the Navy assessed and agreed to move the Ship Shock Trial Area located in the VACAPES OPAREA away from the Mid-Atlantic Planning Awareness Area (PAA) and to include a 5 NM buffer between the Mid-Atlantic PAA and the Ship Shock Trial Area.



3. JAX OPAREA Ship Shock Trial Area (showing shift) – This figure shows the original location of the JAX OPAREA Ship Shock Trial Area and the shift to the current location of the Ship Shock Trial Area. The size of the of the JAX OPAREA Ship Shock Trial Area box has been enlarged due to updated requirements. The AFTT Final EIS/OEIS analyzed the larger Ship Shock Trial Area and the updated area was used in the acoustic and explosive modeling, however, the figures located in the AFTT Final EIS/OEIS were not updated.