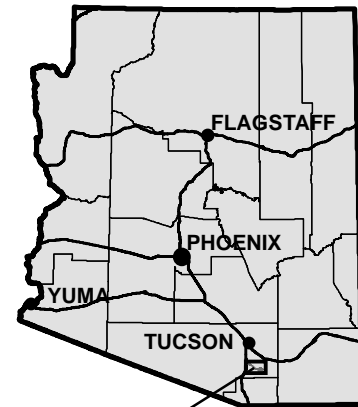
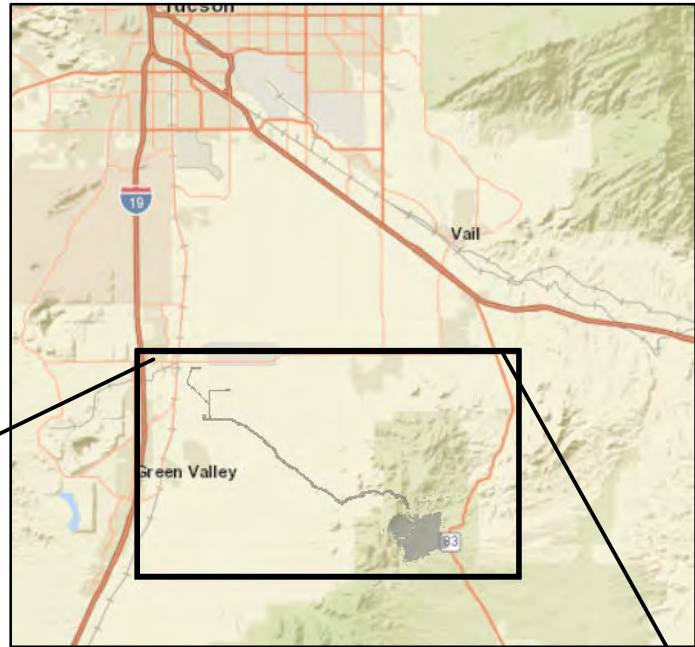


ARIZONA

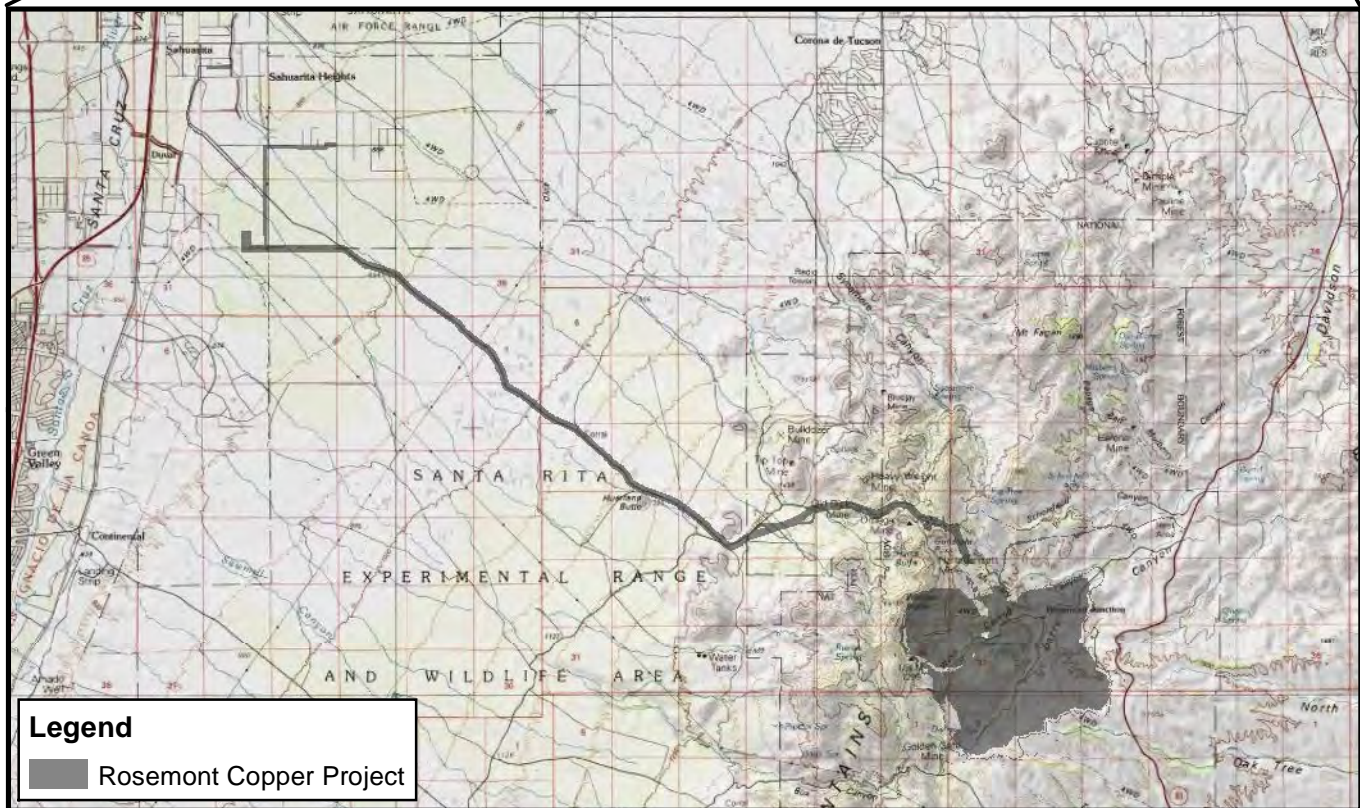


PROJECT
LOCATION

PROJECT VICINITY



Approximate Scale 1 Inch = 10 Miles



Pima County, Arizona,
Data Source: CDM Smith
Image Source: USGS

ROSEMONT COPPER PROJECT

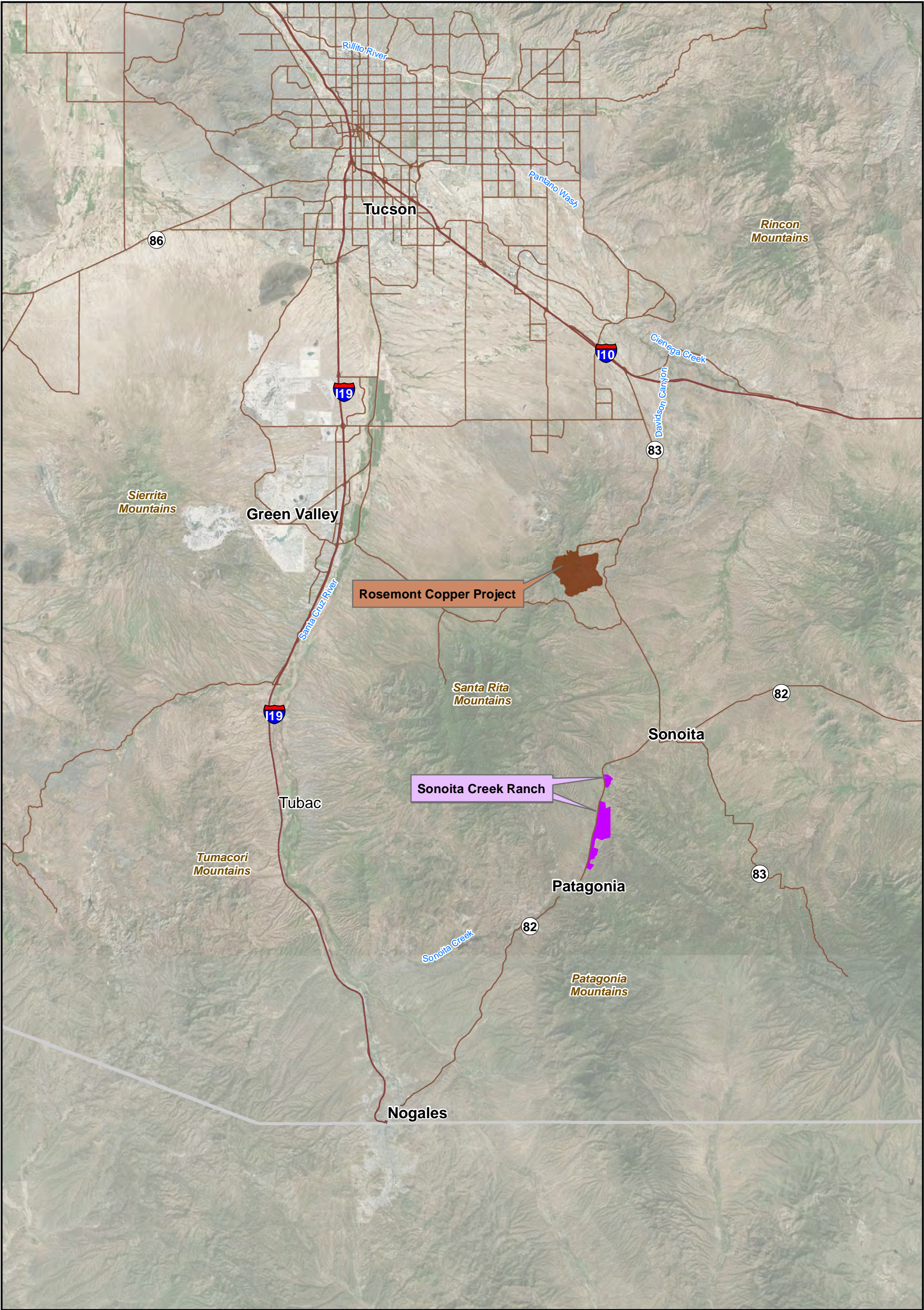
Impacts to Potential WOTUS

Vicinity Map
Figure 1


WestLand Resources



0 2 4 Miles
0 3 6 Kilometers



Pima & Santa Cruz Counties, Arizona,
Photo Source: ArcGIS Online NAIP 2015 Orthophoto

Legend

- Rosemont Copper Project
- 404 Mitigation Parcel
- International Border

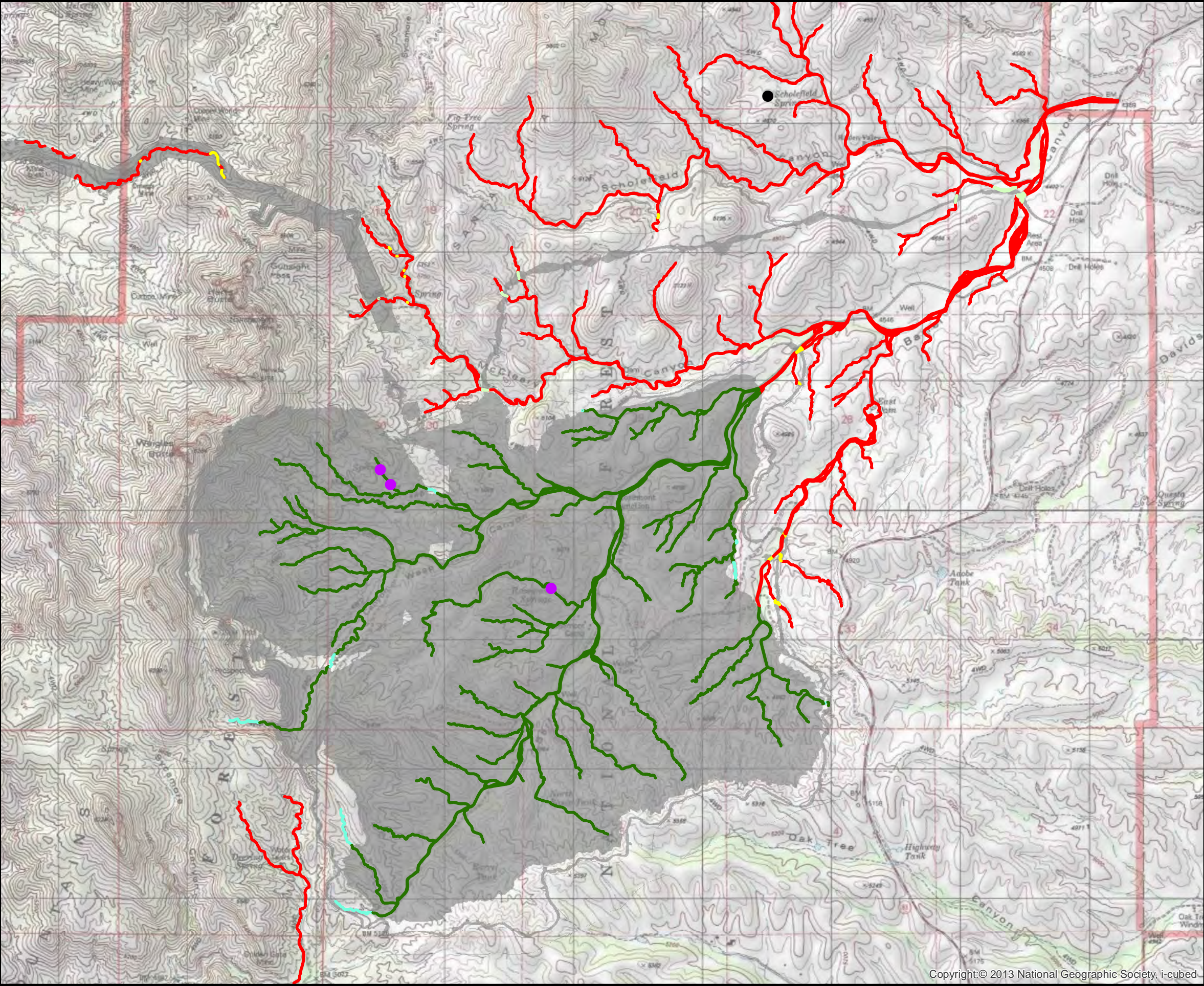
ROSEMONT COPPER COMPANY
Rosemont Project HMMP
September 12, 2017

PROJECT SETTING
Figure 2

CORPS FILE NO. SPL-2008-00816-MB

0 15,000 30,000 Feet

N



Pima County, Arizona,
Data Source: CDM Smith
Image Source: USGS

Legend

Ephemeral Drainages

No Fill
(73.6 acres)

Fill - Permanent Loss
(36.5 acres)

No Fill - Permanent Loss
(0.5 acres)

Fill - No Permanent Loss (culverts)
(0.9 acres)

Temporary Fill - Restored to Original Contours
(1.6 acres)

Non-Drainages (springs)

No Fill (wetland)
(0.3 acres)

Fill - Permanent Loss
(16.4 sq. ft.)

*Acreages are for the entire project
(Both the project site and utility corridor)

Rosemont Copper Project

Project Footprint (CDM 2018)

N

02,5005,000

Feet

06001,200

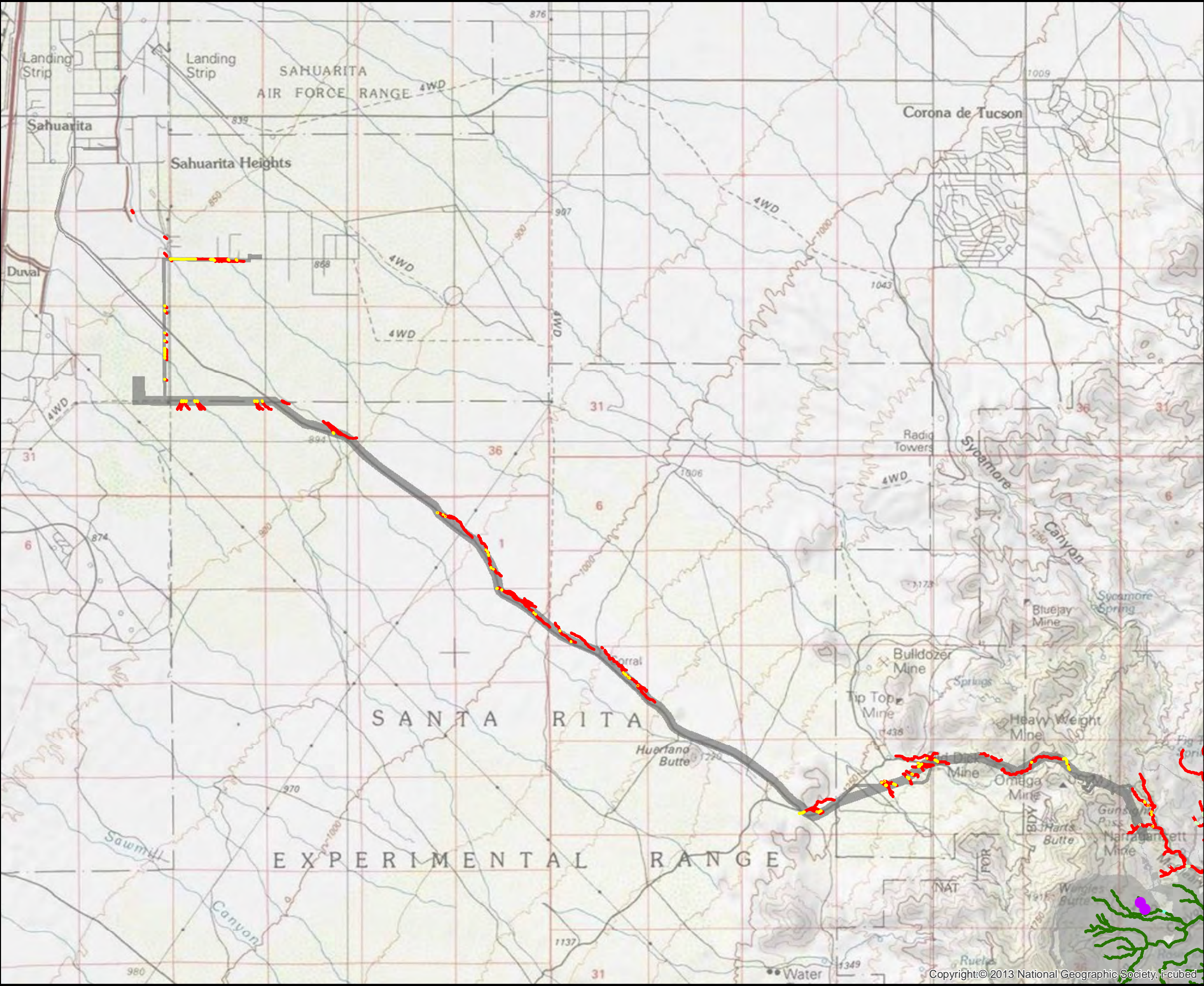
Meters

WestLand Resources

ROSEMONT COPPER PROJECT
Impacts to Potential WOTUS

Project Site
Figure 2

Copyright:© 2013 National Geographic Society, i-cubed



Pima County, Arizona,
Data Source: CDM Smith
Image Source: USGS

Legend

Ephemeral Drainages

- No Fill (73.6 acres)
- Fill - Permanent Loss (36.5 acres)
- No Fill - Permanent Loss (0.5 acres)
- Fill - No Permanent Loss (culverts) (0.9 acres)
- Temporary Fill - Restored to Original Contours (1.6 acres)

Non-Drainages (springs)

- No Fill (wetland) (0.3 acres)
- Fill - Permanent Loss (16.4 sq. ft.)

*Acres are for the entire project
(Both the project site and utility corridor)


Rosemont Copper Project

Project Footprint (CDM 2018)

N

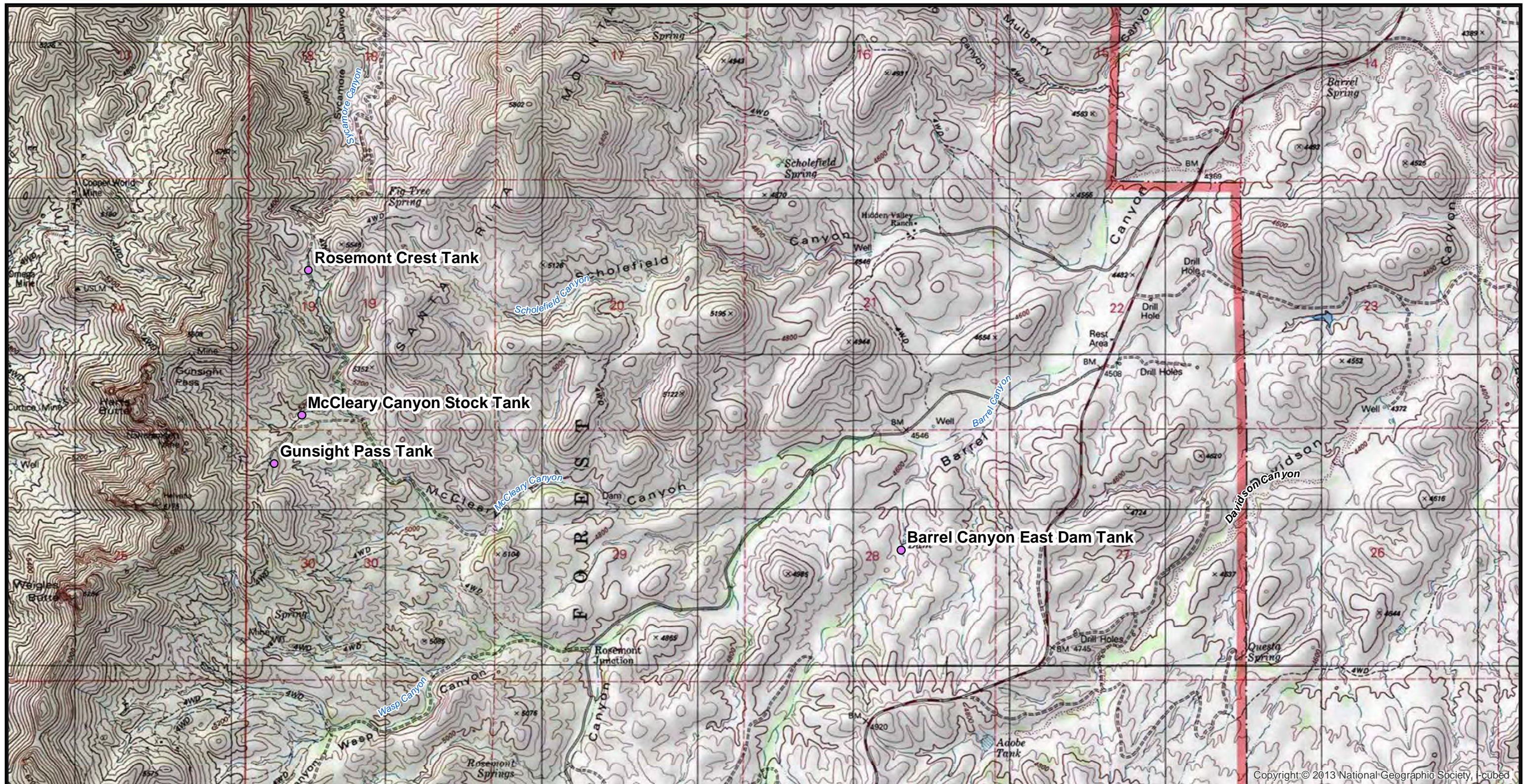
0 5,000 10,000 Feet

0 1,000 2,000 Meters

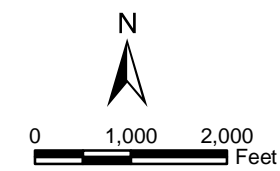

WestLand Resources

ROSEMONT COPPER PROJECT
Impacts to Potential WOTUS

Utility Corridor
Figure 3

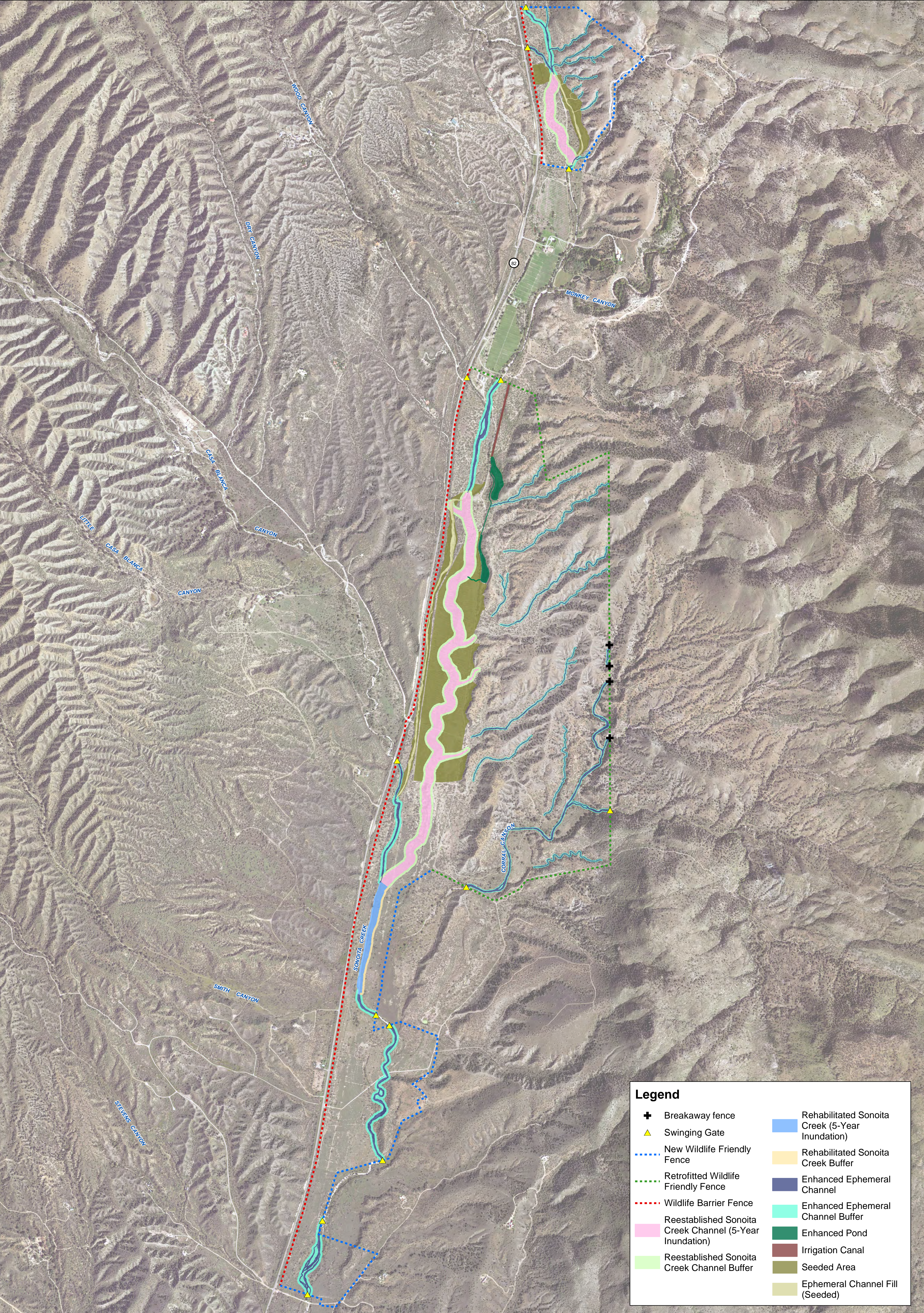


Pima County, Arizona
Data Source: Rosemont Copper
Photo Source: ArcGIS Online (USA TOPO)



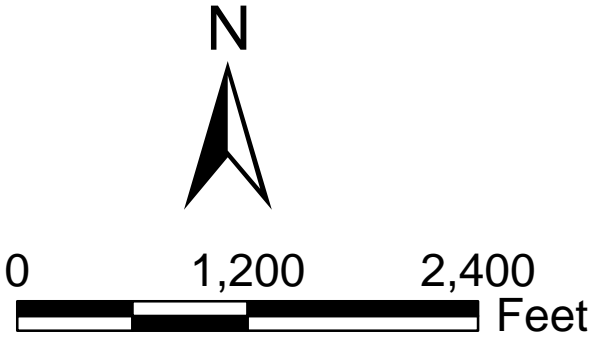
Legend
● Earthen Dam to be Removed

ROSEMONT COPPER COMPANY
Rosemont Project HMMP
September 12, 2017
Rosemont Site Earthen Dam Removal
Figure 12
CORPS FILE NO. SPL-2008-00816-MB



T21S, R16E, Portion of Sections 3, 4, 9, 16, 20, 21, 28, 29, 32, & 33,
Santa Cruz County, Arizona
Photo Source: 2015 USDA NAIP Orthophoto

Note: All riparian buffers are 50 ft.

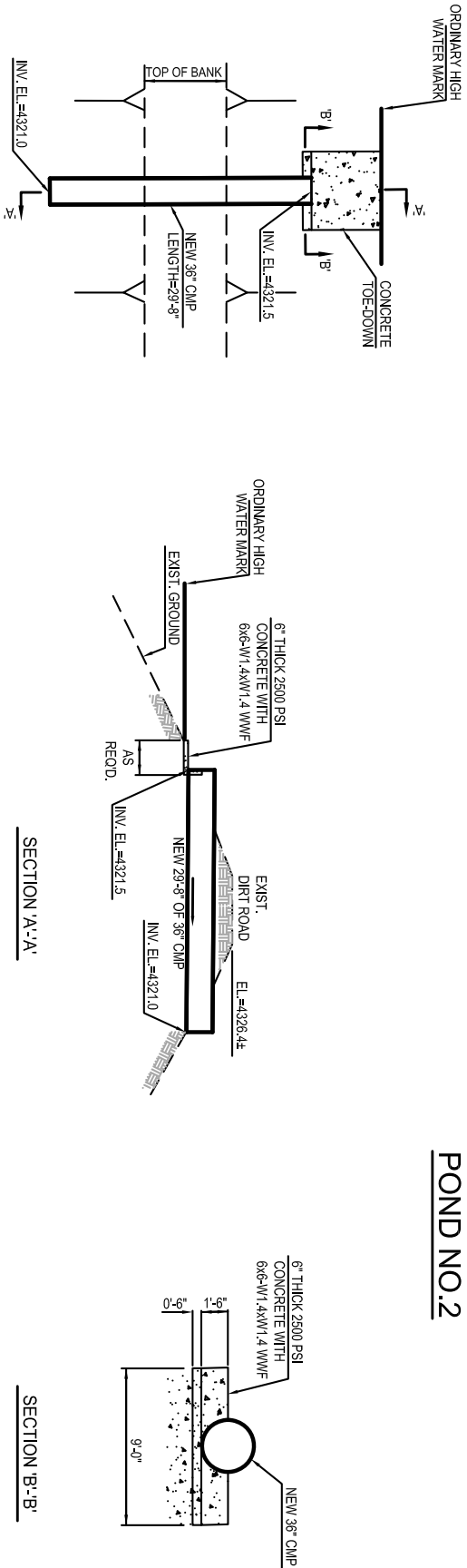


ROSEMONT COPPER COMPANY
Rosemont Project HMMP
September 12, 2017
SONOITA CREEK RANCH
POST MITIGATION IMPLEMENTATION
Figure 13

CORPS FILE NO. SPL-2008-00816-MB



POND NO.2



NOT FOR CONSTRUCTION

1 POND OUTLET DETAIL
N.T.S.

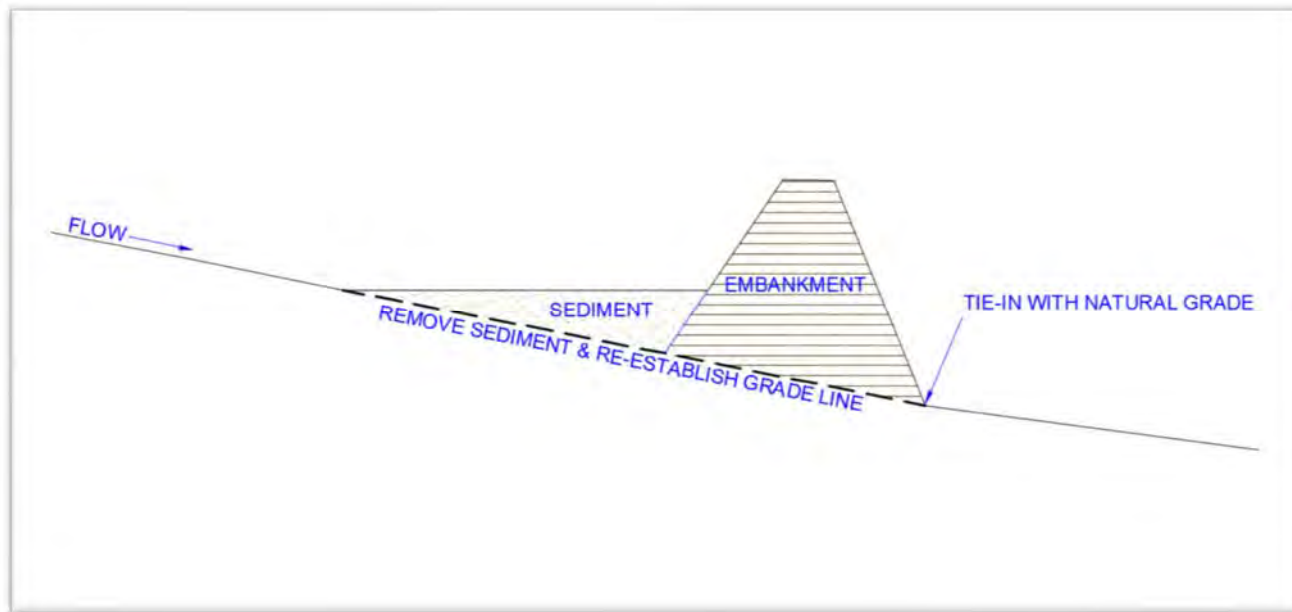
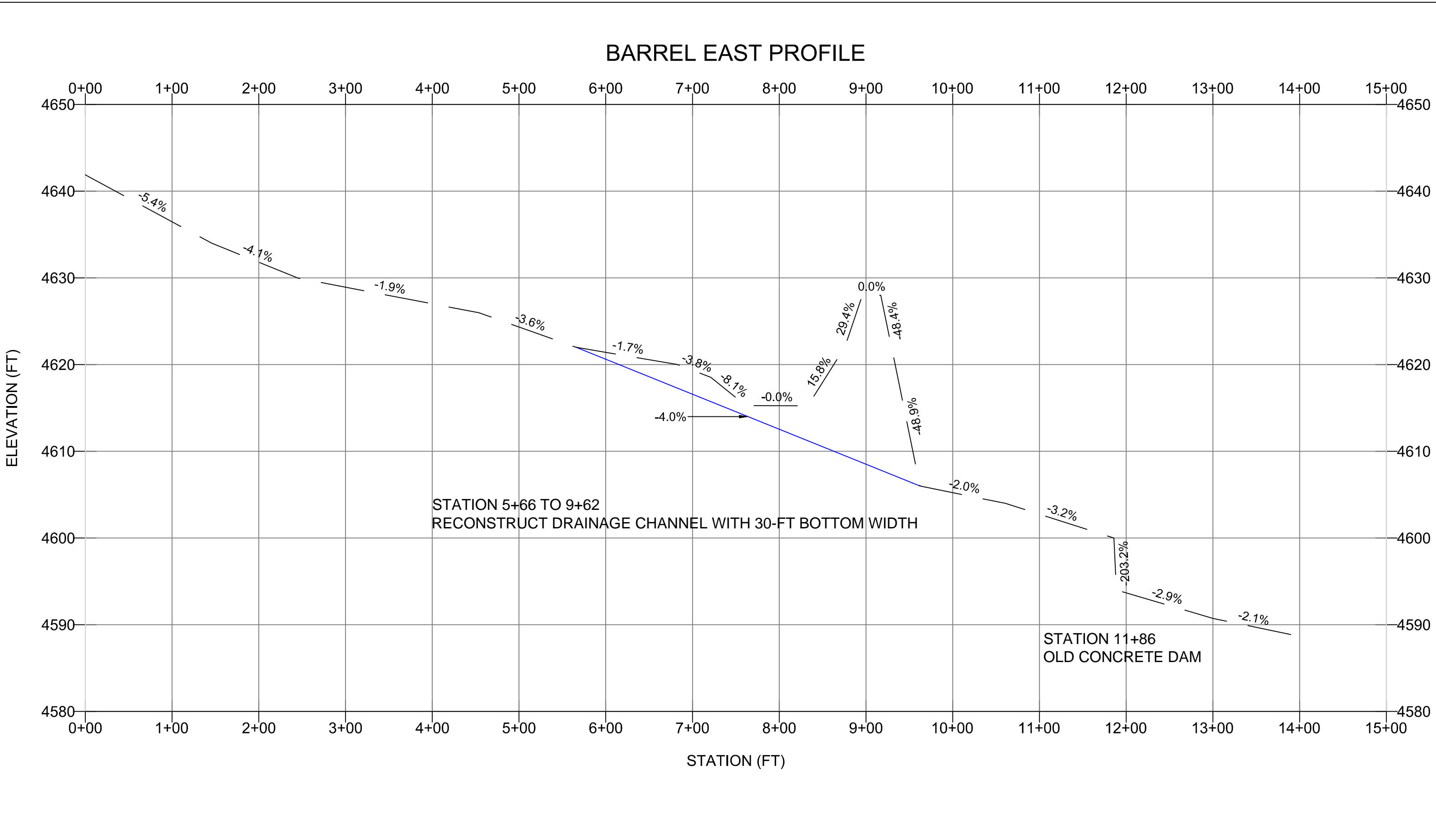
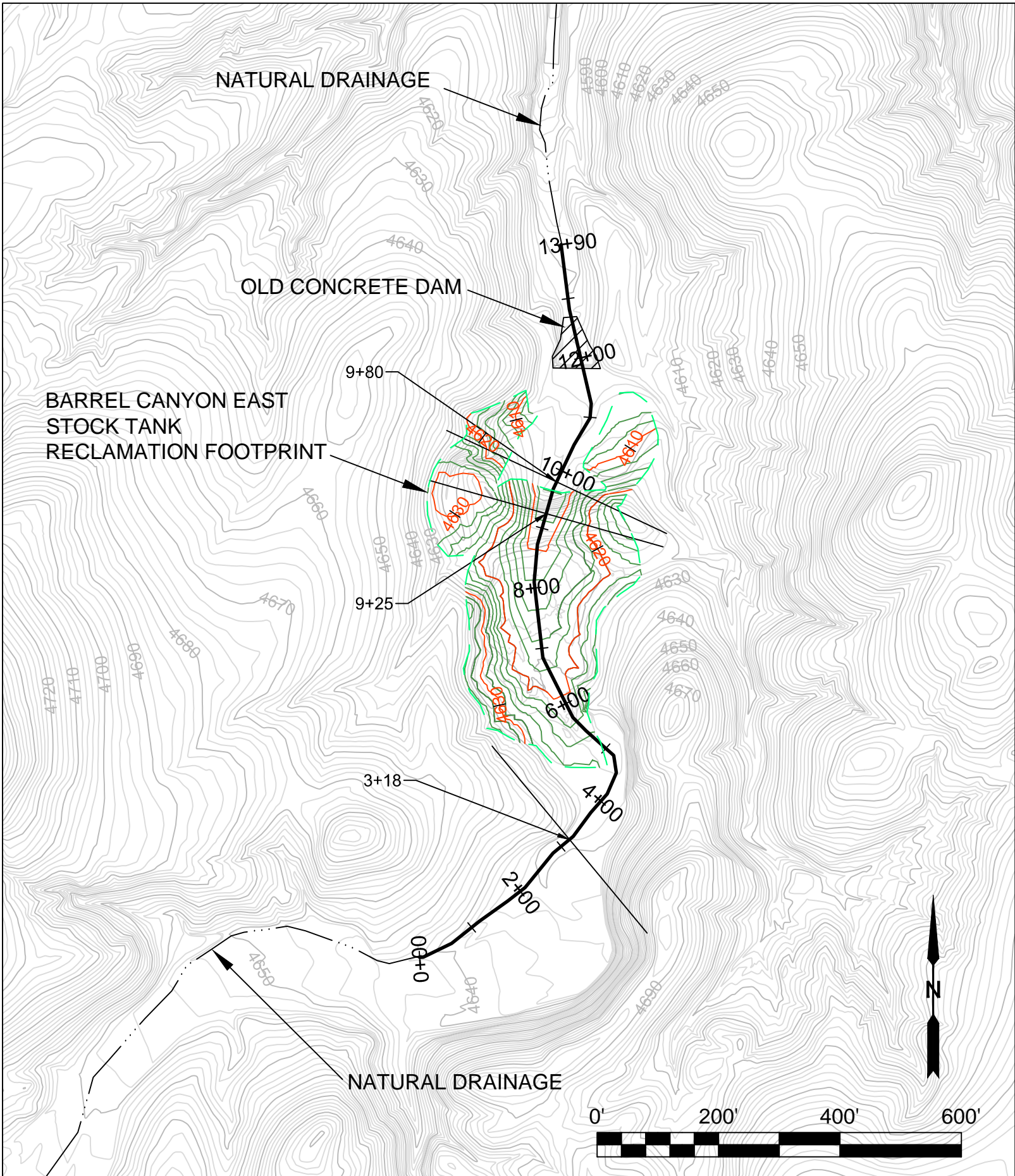
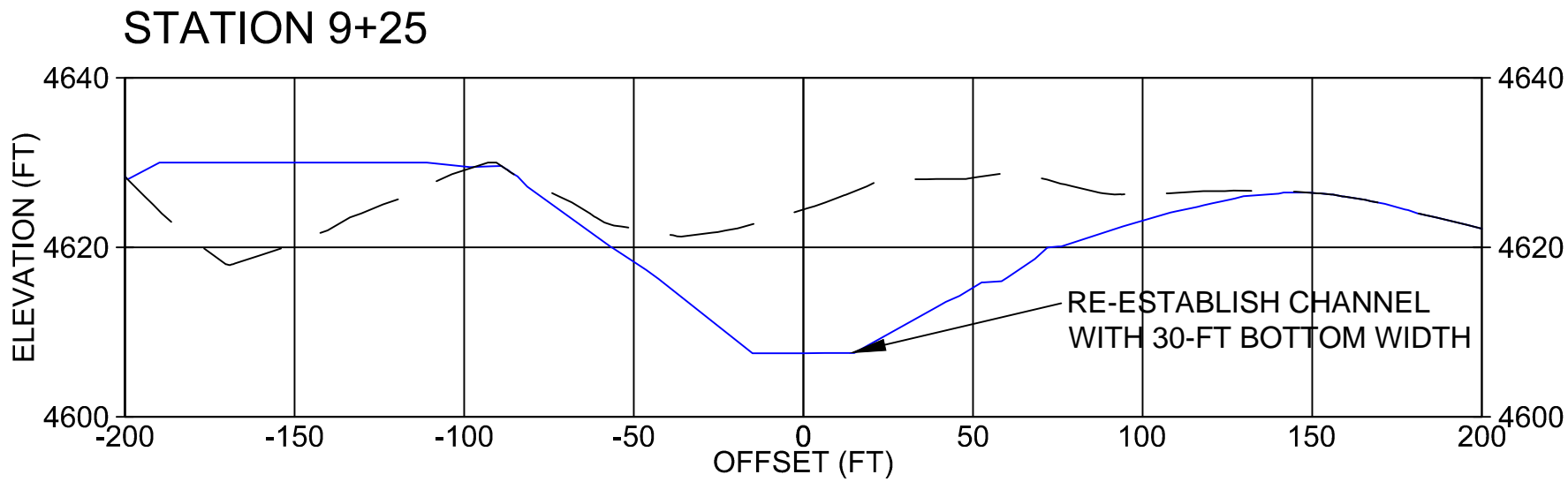
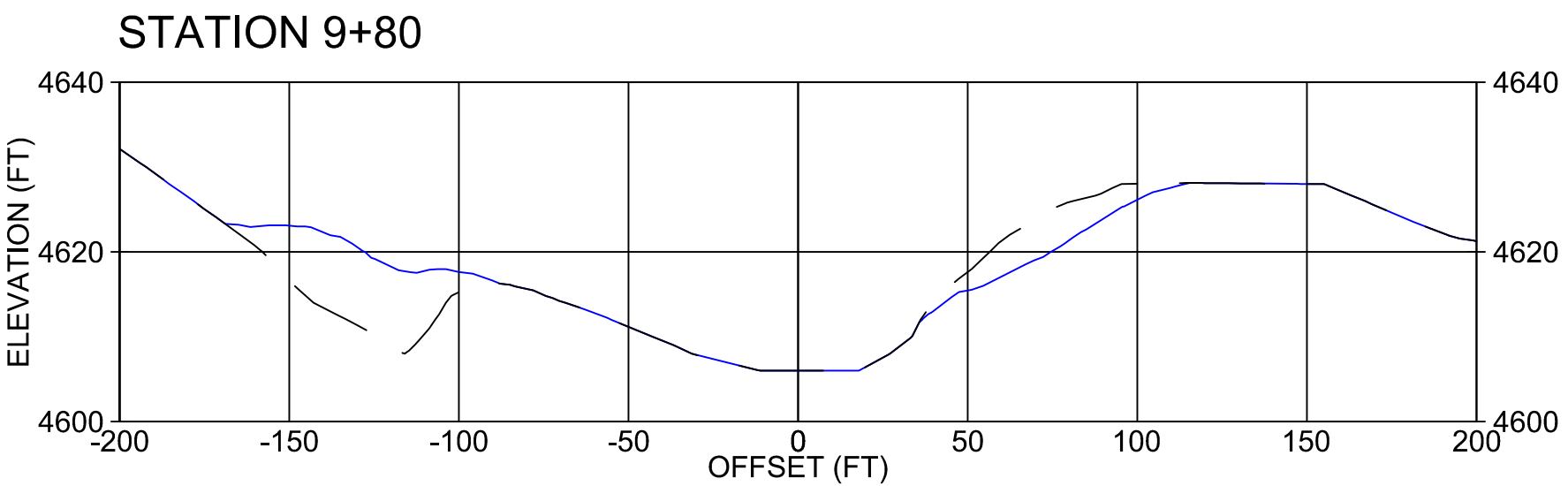
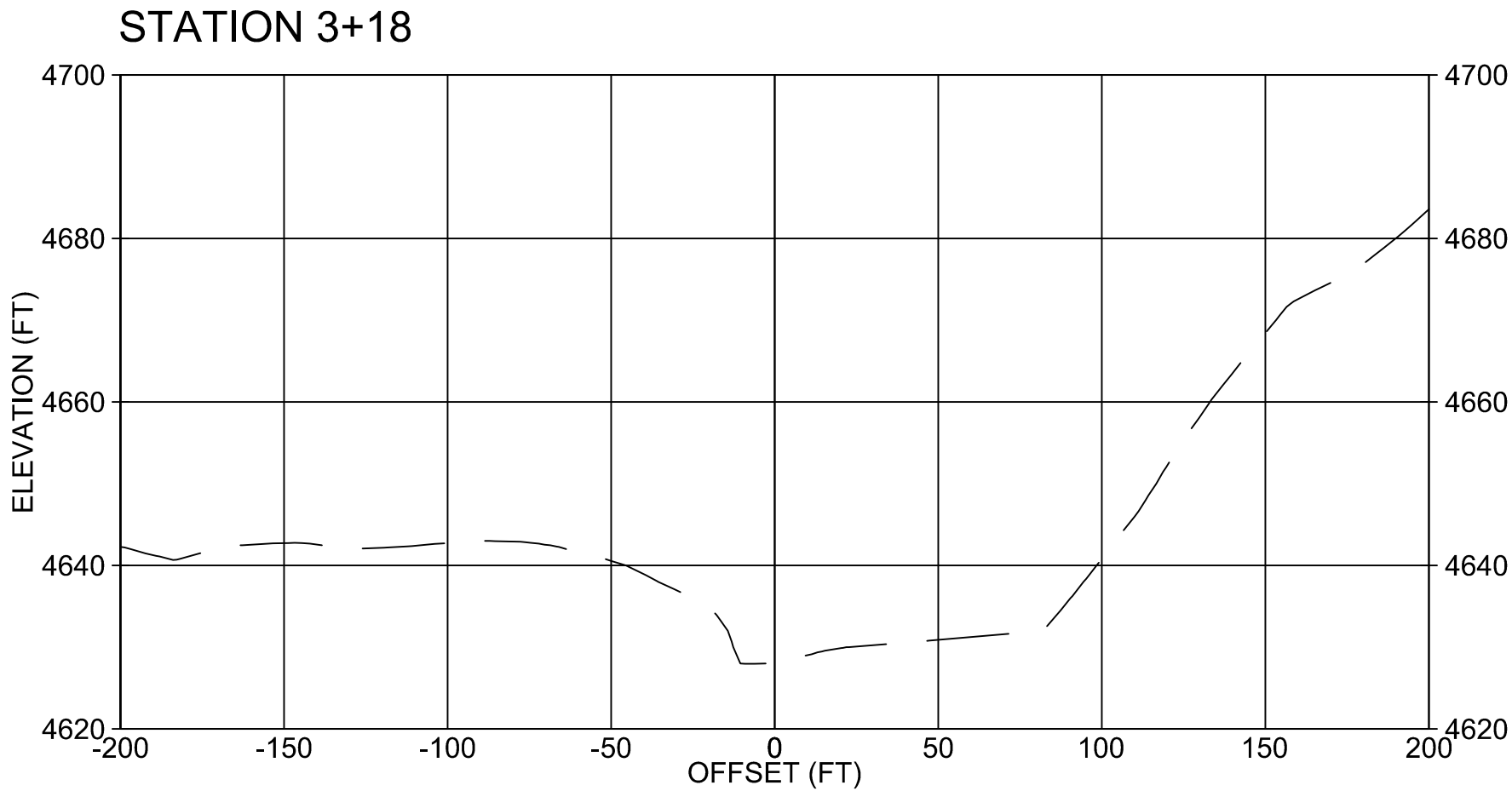


Figure 2. Stock Tank Removal Schematic




- LEGEND**
- EXISTING INDEX CONTOUR (10-FT INTERVAL)
 - EXISTING INTERMEDIATE CONTOUR (2-FT INTERVAL)
 - PROPOSED INDEX CONTOUR (10-FT INTERVAL)
 - PROPOSED INTERMEDIATE CONTOUR (2-FT INTERVAL)
 - PROPOSED CHANNEL EXCAVATION LIMIT
 - CHANNEL ALIGNMENT WITH STATIONS
 - CROSS SECTION
 - EXISTING GRADE PROFILE
 - PROPOSED FINAL GRADE PROFILE
 - EXISTING EPHEMERAL DRAINAGE

- NOTES**
- PROFILES OF EXISTING GRADE AND FINAL GRADE CORRESPOND TO CHANNEL CENTERLINE ELEVATIONS.
 - FINAL GRADE PROFILE CORRESPONDS TO CHANNEL INVERT ELEVATION.
 - CROSS SECTIONS ARE DISPLAYED FACING DOWNSTREAM.
 - RECONSTRUCTED DRAINAGE CHANNEL SHALL BLEND IN WITH THE NATURAL DRAINAGE AT THE UPSTREAM AND DOWNSTREAM EXCAVATION LIMITS.
 - CONSTRUCTION SHALL NOT DISTURB THE OLD CONCRETE DAM.
 - FOLLOWING CONSTRUCTION THE DISTURBED AREA WILL BE REVEGETATED PER THE "REVEGETATION AND GROWTH MEDIA MONITORING PLAN".



REFERENCES			REFERENCES			REVISIONS							REVISIONS						
DWG. NO.	TITLE		DWG. NO.	TITLE		NO.	BY	CHKD	APP	CLIENT	DATE	DESCRIPTION	NO.	BY	CHKD	APP	CLIENT	DATE	DESCRIPTION



ROSEMONT PROJECT

STOCK TANK REMOVAL

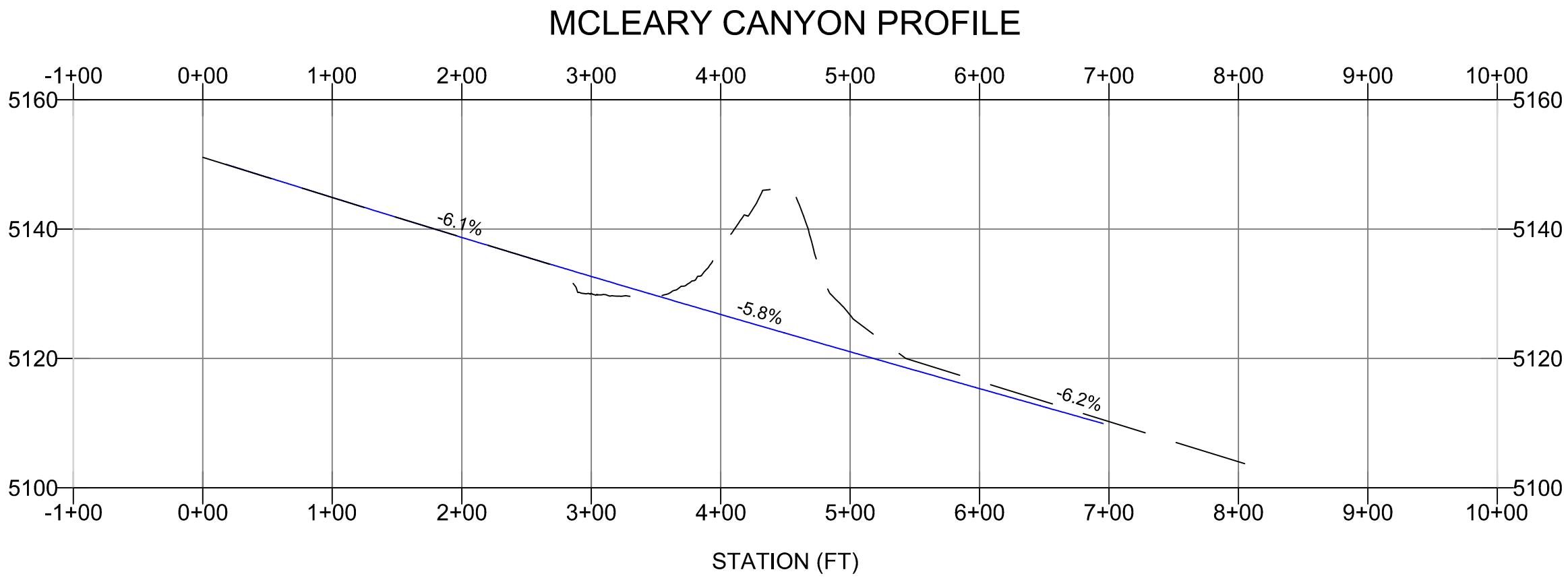
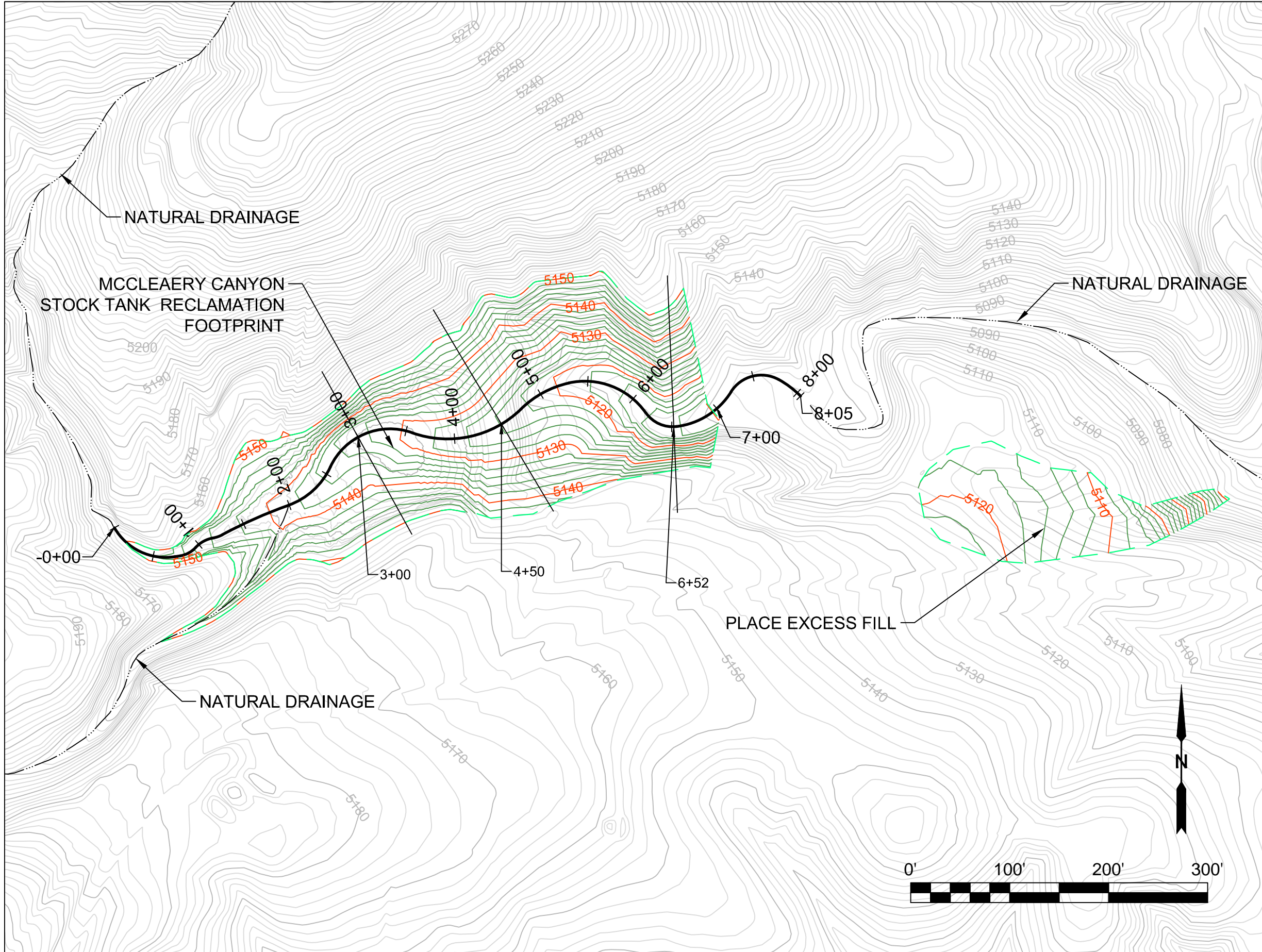
BARREL CANYON EAST STOCK TANK REMOVAL PLAN

NOT FOR CONSTRUCTION

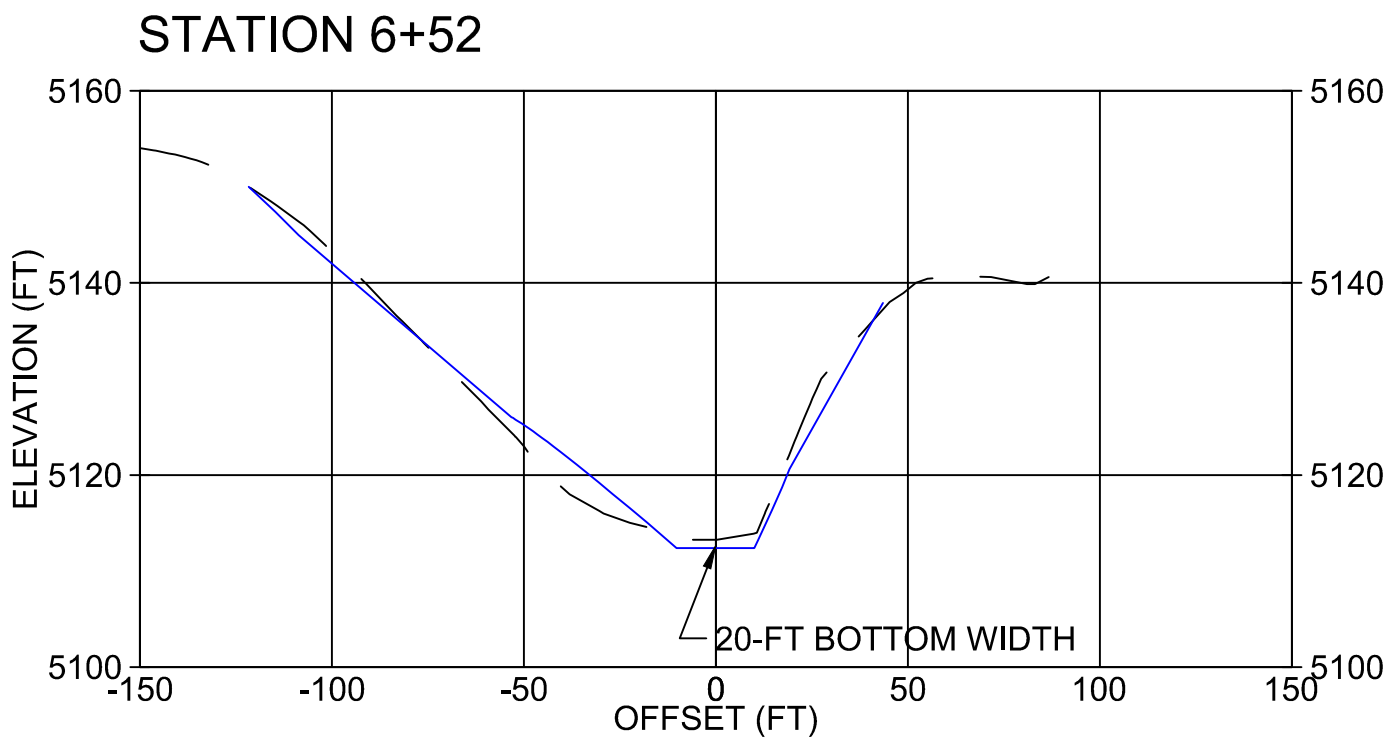
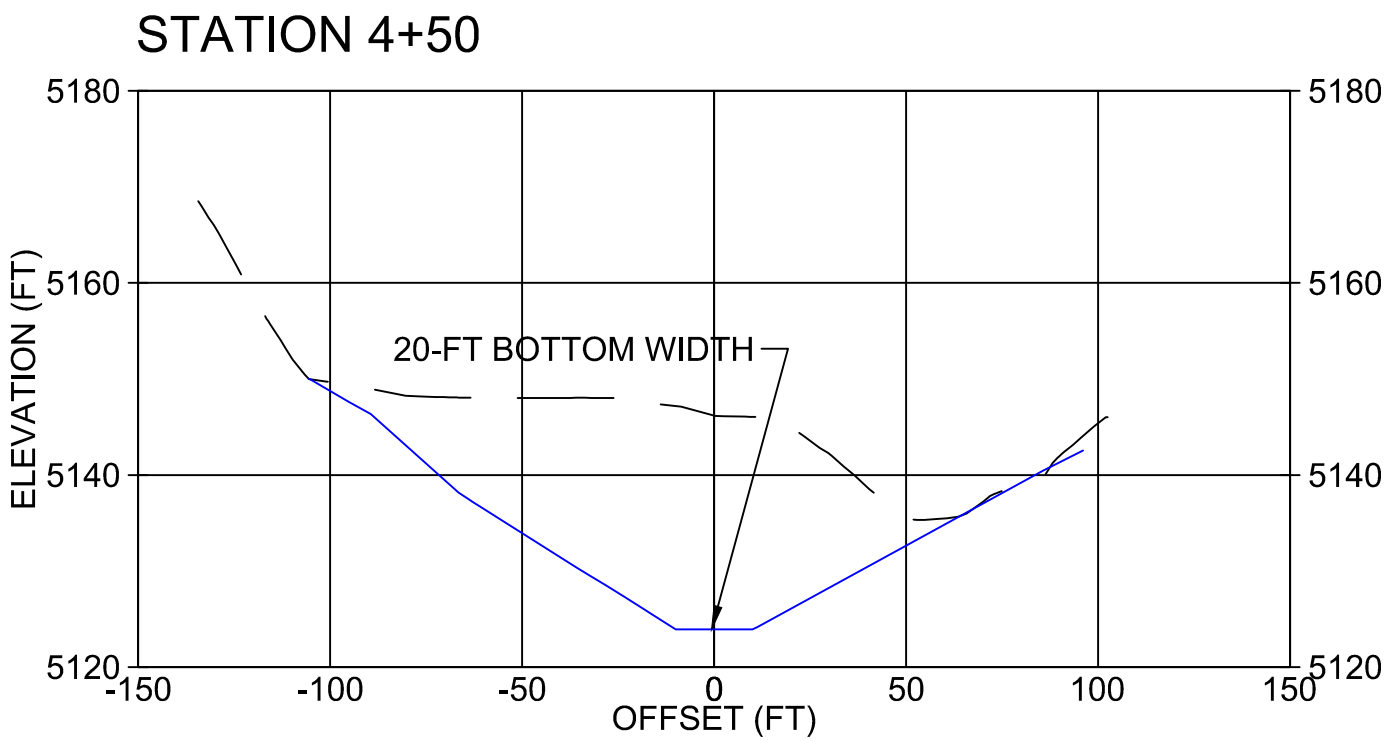
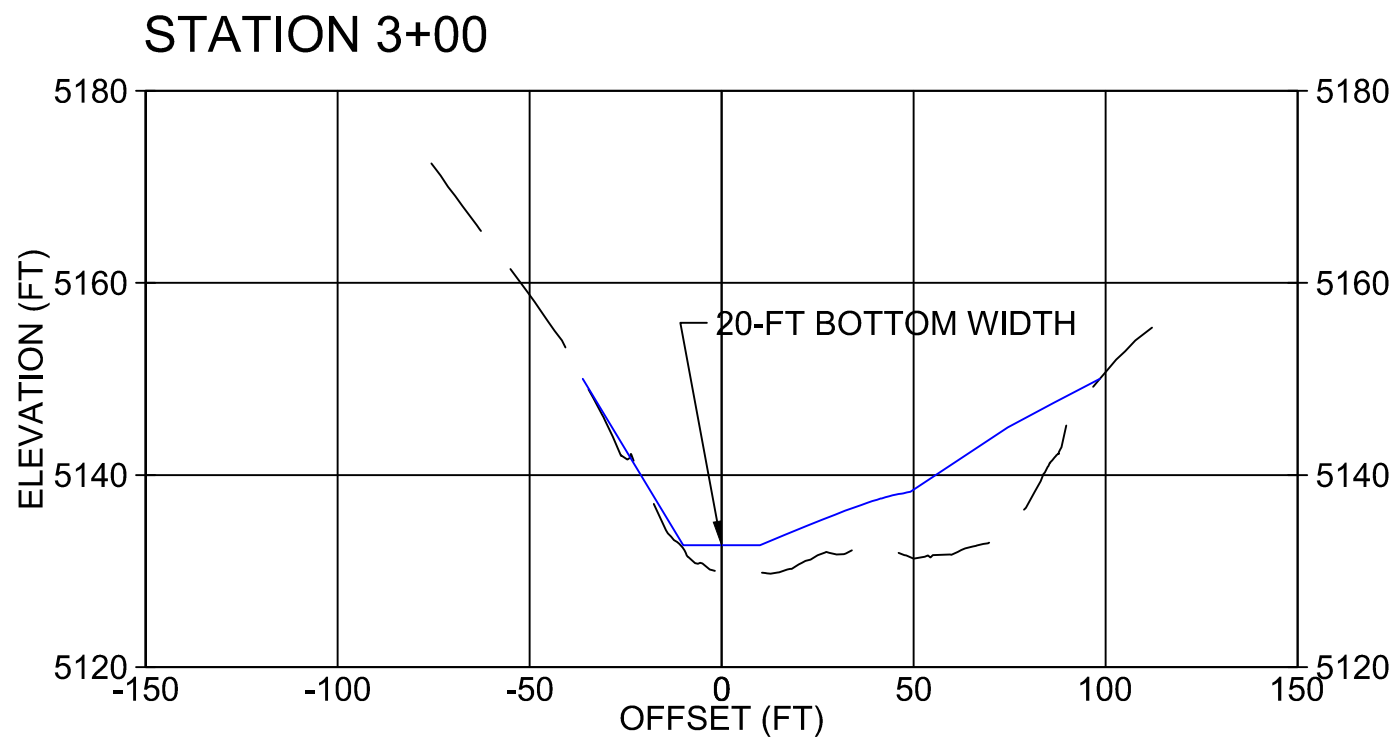
CONTRACTOR DWG. NO.
S.TANK 1

DWG. NO.

REVISION | DATE
09/08/2017



- LEGEND**
- EXISTING INDEX CONTOUR (10-FT INTERVAL)
 - EXISTING INTERMEDIATE CONTOUR (2-FT INTERVAL)
 - PROPOSED INDEX CONTOUR (10-FT INTERVAL)
 - PROPOSED INTERMEDIATE CONTOUR (2-FT INTERVAL)
 - PROPOSED CHANNEL EXCAVATION LIMIT
 - CHANNEL ALIGNMENT WITH STATIONS
 - CROSS SECTION
 - EXISTING GRADE PROFILE
 - PROPOSED FINAL GRADE PROFILE
 - EXISTING EPHEMERAL DRAINAGE



- NOTES**
- PROFILES OF EXISTING GRADE AND FINAL GRADE CORRESPOND TO CHANNEL CENTERLINE ELEVATIONS.,
 - FINAL GRADE PROFILE CORRESPONDS TO CHANNEL INVERT ELEVATION.
 - CROSS SECTIONS ARE DISPLAYED FACING DOWNSTREAM
 - RECONSTRUCTED CHANNEL SHALL BLEND IN WITH THE NATURAL DRAINAGE AT THE UPSTREAM AND DOWNSTREAM EXCAVATION LIMITS.
 - FOLLOWING CONSTRUCTION THE DISTURBED AREA WILL BE REVEGETATED PER THE "REVEGETATION AND GROWTH MEDIA MONITORING PLAN".



1225 RED CEDAR CIRCLE, SUITE A
FORT COLLINS, CO 80524
(970) 225-6080
WWW.WETEC.US

SEAL

REFERENCES			REFERENCES			REVISIONS							REVISIONS						
DWG. NO.	TITLE		DWG. NO.	TITLE		NO.	BY	CKD	APP	CLIENT	DATE	DESCRIPTION	NO.	BY	CKD	APP	CLIENT	DATE	DESCRIPTION
						1							1						
						2							2						
						3							3						
						4							4						
						5							5						
						6							6						
						7							7						
						8							8						
						9							9						
						10							10						



ROSEMONT PROJECT

STOCK TANK REMOVAL

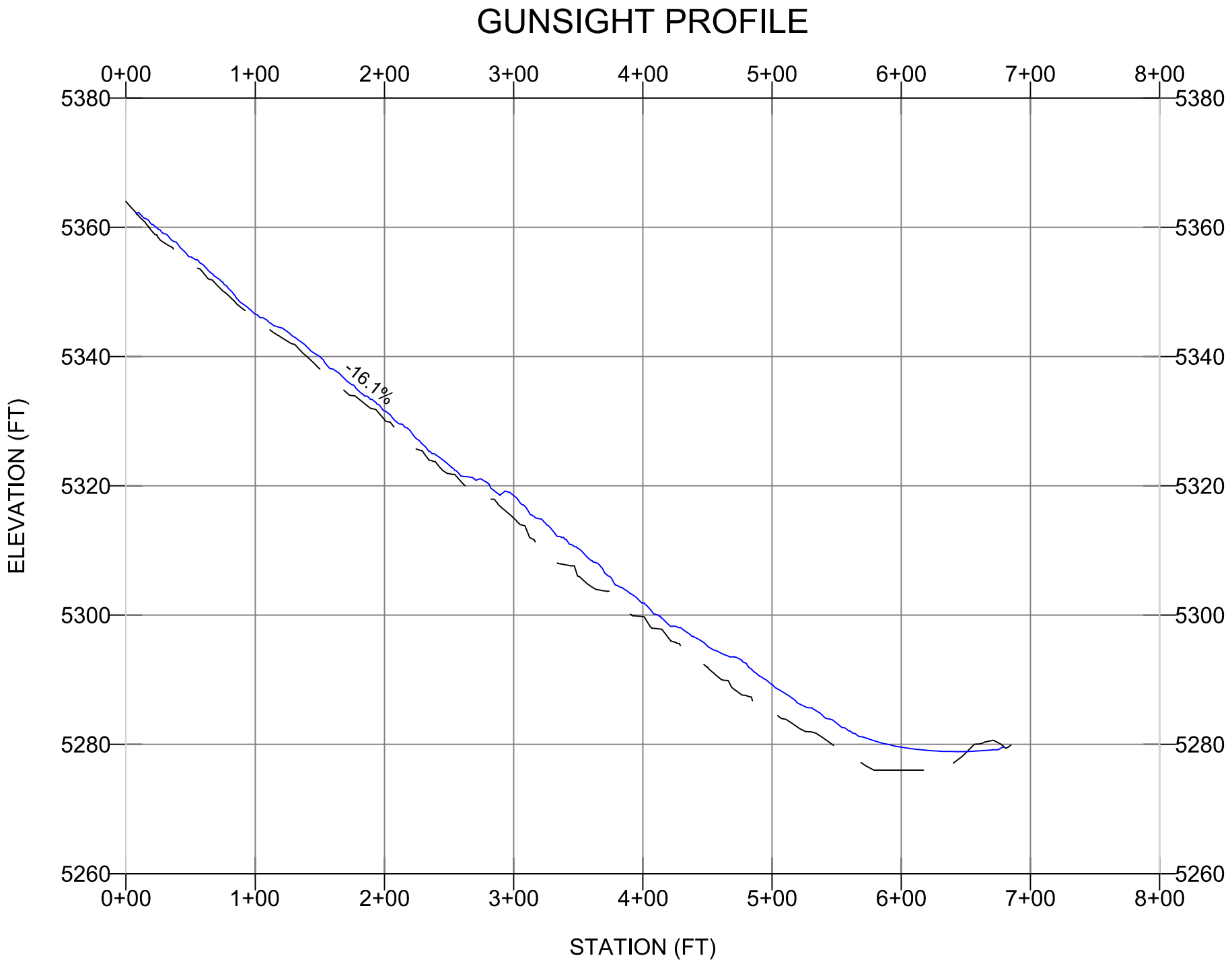
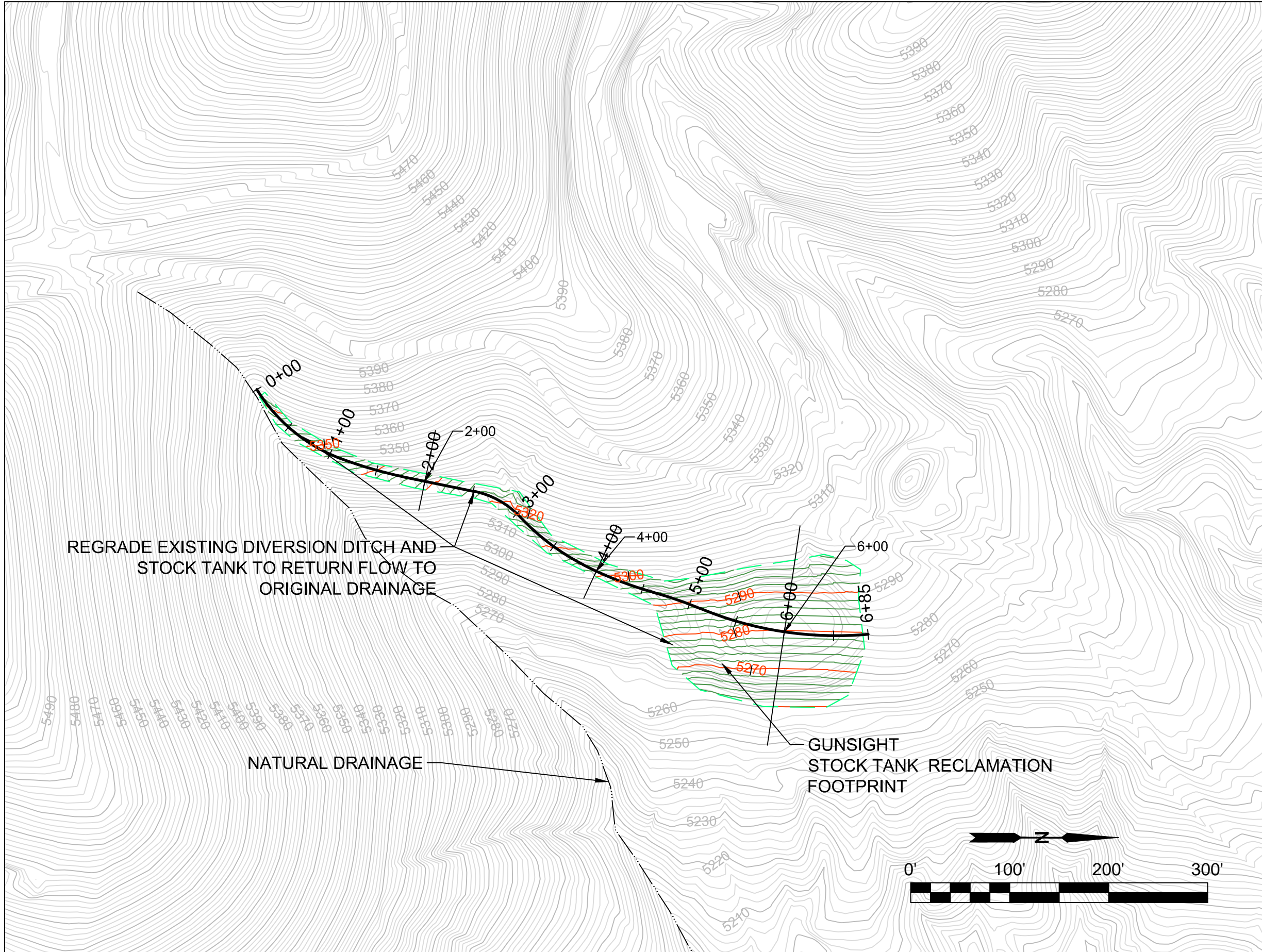
MCCLEARY CANYON
STOCK TANK REMOVAL PLAN

NOT FOR CONSTRUCTION

CONTRACTOR DWG. NO.
S.TANK 2

DWG. NO.

REVISION | DATE
09/08/17



- LEGEND
- EXISTING INDEX CONTOUR (10-FT INTERVAL)
 - EXISTING INTERMEDIATE CONTOUR (2-FT INTERVAL)
 - PROPOSED INDEX CONTOUR (10-FT INTERVAL)
 - PROPOSED INTERMEDIATE CONTOUR (2-FT INTERVAL)
 - PROPOSED CHANNEL EXCAVATION LIMIT
 - CHANNEL ALIGNMENT WITH STATIONS
 - CROSS SECTION
 - EXISTING GRADE PROFILE
 - PROPOSED FINAL GRADE PROFILE
 - EXISTING EPHEMERAL DRAINAGE

- NOTES
- PROFILES OF EXISTING GRADE AND FINAL GRADE CORRESPOND TO ALIGNMENT CENTERLINE ELEVATIONS.,
 - FINAL GRADE PROFILE CORRESPONDS TO ALIGNMENT INVERT ELEVATION.
 - CROSS SECTIONS ARE DISPLAYED FACING DOWNSTREAM
 - RECONSTRUCTED SLOPE SHALL BLEND IN WITH THE NATURAL SLOPE
 - FOLLOWING CONSTRUCTION THE DISTURBED AREA WILL BE REVEGETATED PER THE "REVEGETATION AND GROWTH MEDIA MONITORING PLAN".

Water & Earth
TECHNOLOGIES
1225 RED CEDAR CIRCLE, SUITE A
FORT COLLINS, CO 80524
(970) 225-6080
WWW.WETEC.US

SEAL

STOCK TANK REMOVAL

REFERENCES		REFERENCES		REVISIONS							REVISIONS						
DWG. NO.	TITLE	DWG. NO.	TITLE	NO.	BY	CKD	APP	CLIENT	DATE	DESCRIPTION	NO.	BY	CKD	APP	CLIENT	DATE	DESCRIPTION
				1							1						
				2							2						
				3							3						
				4							4						
				5							5						
				6							6						
				7							7						
				8							8						
				9							9						
				10							10						

HUDBAY

ROSEMONT PROJECT

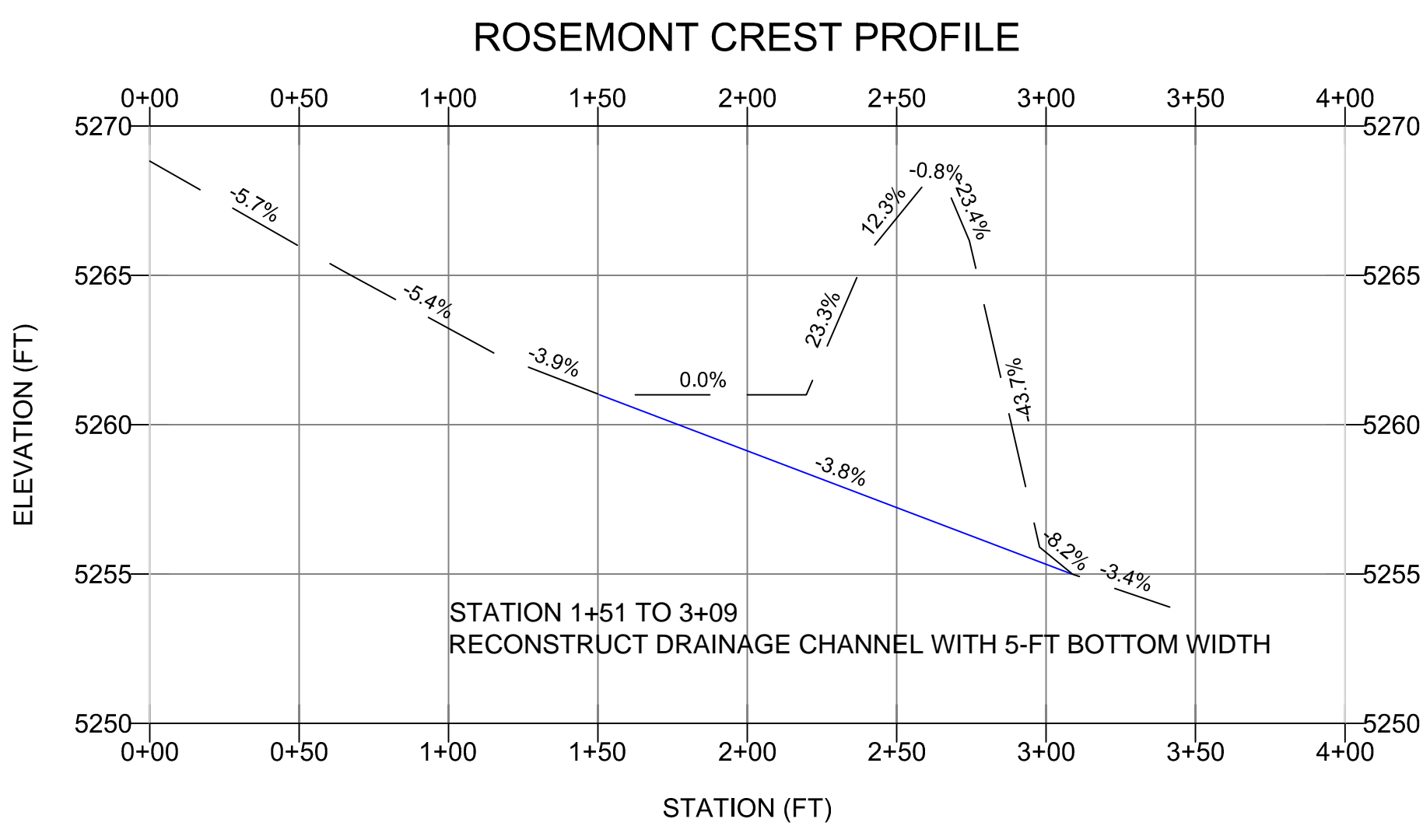
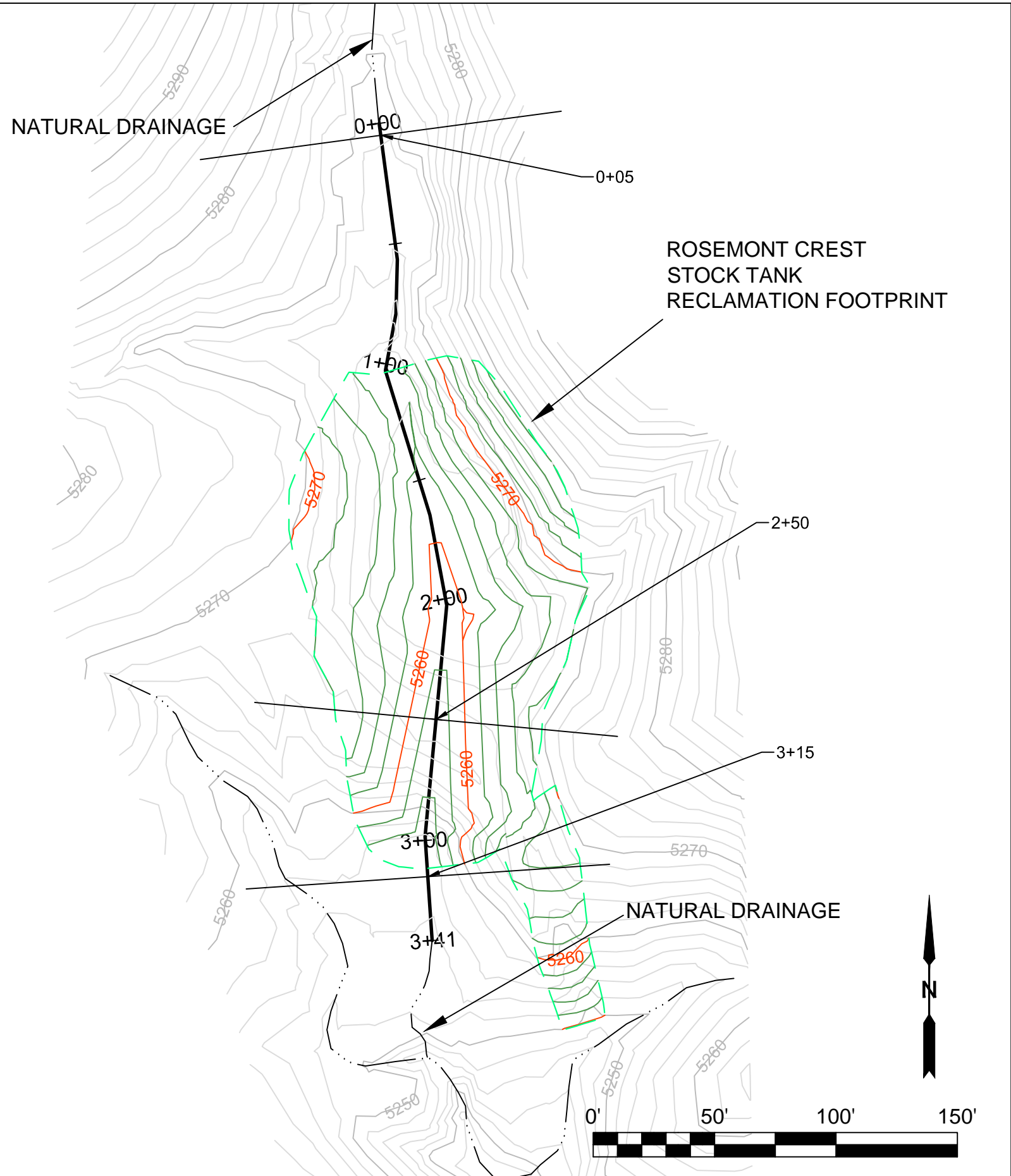
GUNSIGHT
STOCK TANK REMOVAL PLAN

NOT FOR CONSTRUCTION

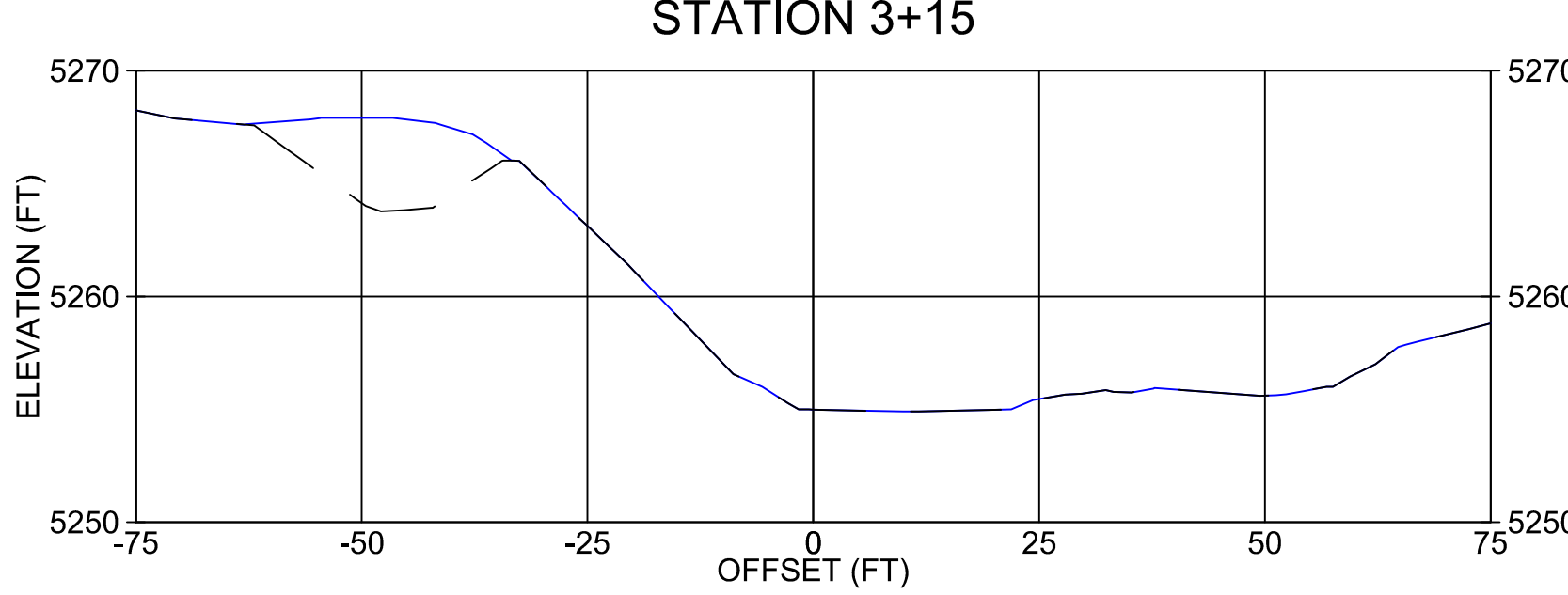
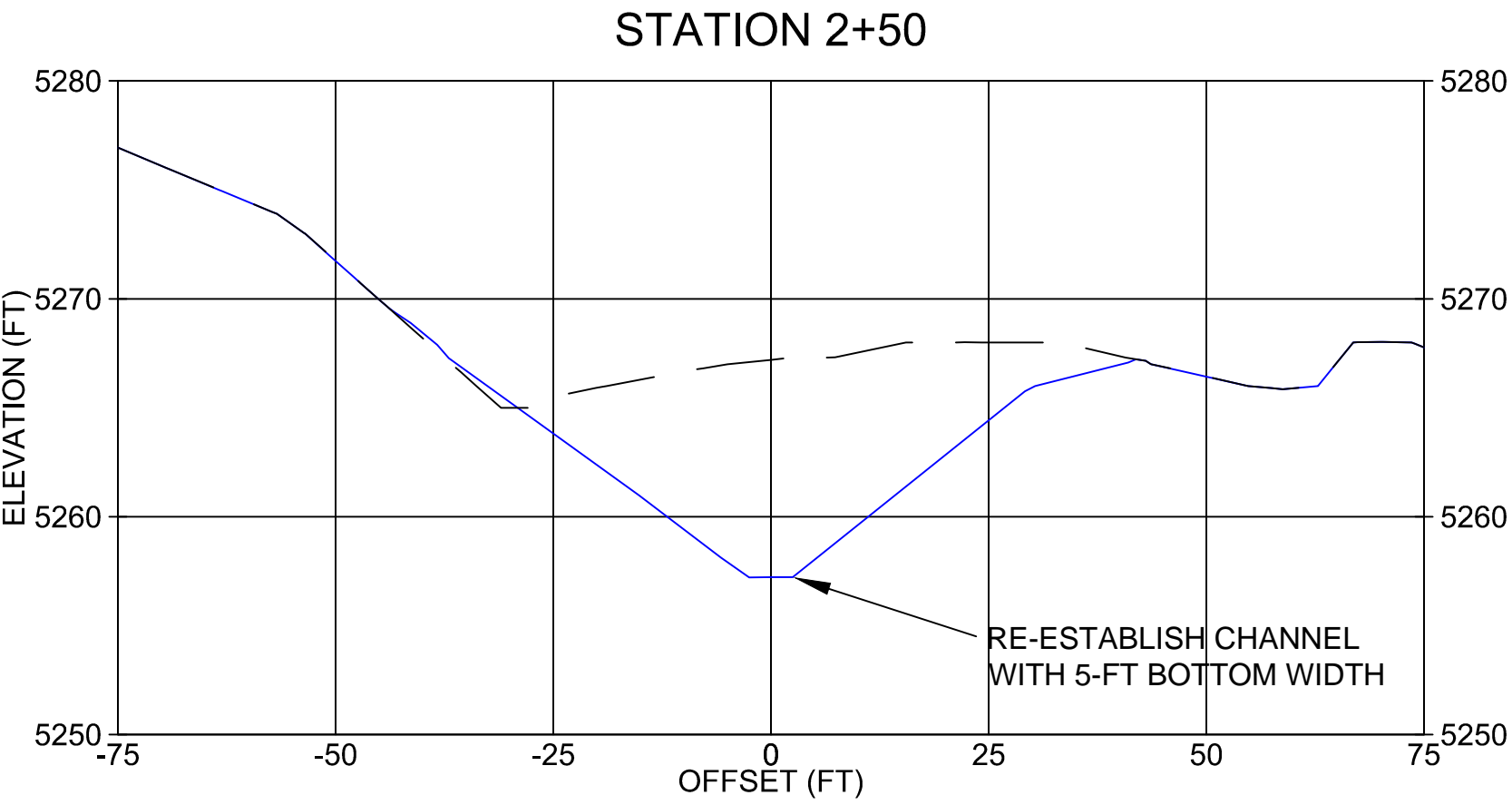
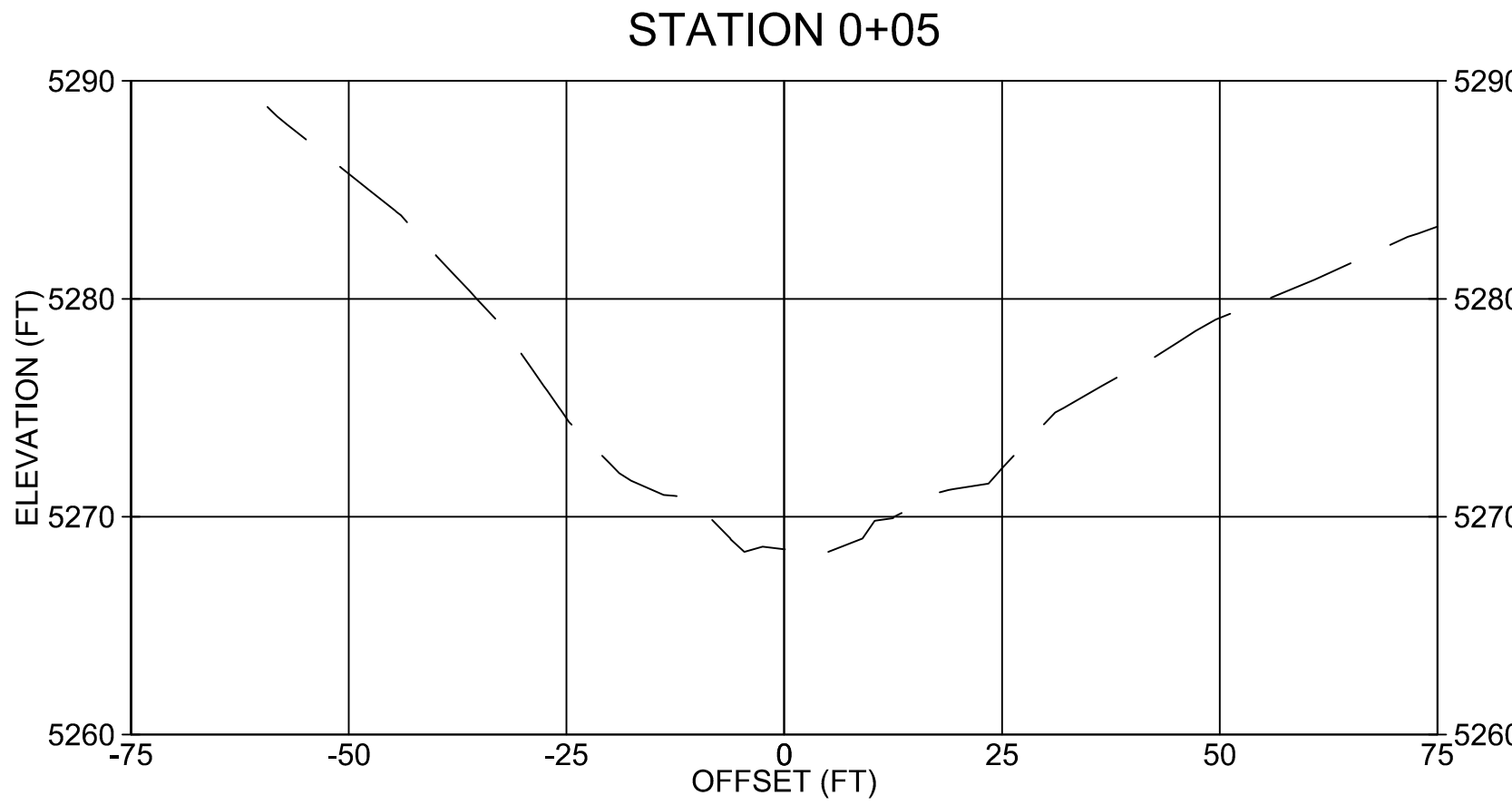
CONTRACTOR DWG. NO.
S.TANK 3

DWG. NO.

REVISION | DATE
09/08/17



- LEGEND**
- EXISTING INDEX CONTOUR (10-FT INTERVAL)
 - EXISTING INTERMEDIATE CONTOUR (2-FT INTERVAL)
 - PROPOSED INDEX CONTOUR (10-FT INTERVAL)
 - PROPOSED INTERMEDIATE CONTOUR (2-FT INTERVAL)
 - PROPOSED CHANNEL EXCAVATION LIMIT
 - CHANNEL ALIGNMENT WITH STATIONS
 - CROSS SECTION
 - EXISTING GRADE PROFILE
 - PROPOSED FINAL GRADE PROFILE
 - EXISTING EPHEMERAL DRAINAGE




- NOTES**
- PROFILES OF EXISTING GRADE AND FINAL GRADE CORRESPOND TO CHANNEL CENTERLINE ELEVATIONS.
 - FINAL GRADE PROFILE CORRESPONDS TO CHANNEL INVERT ELEVATION.
 - CROSS SECTIONS ARE DISPLAYED FACING DOWNSTREAM.
 - RECONSTRUCTED DRAINAGE CHANNEL SHALL BLEND IN WITH THE NATURAL DRAINAGE AT THE UPSTREAM AND DOWNSTREAM EXCAVATION LIMITS.
 - FOLLOWING CONSTRUCTION THE DISTURBED AREA WILL BE REVEGETATED PER THE "REVEGETATION AND GROWTH MEDIA MONITORING PLAN".



1225 RED CEDAR CIRCLE, SUITE A
FORT COLLINS, CO 80524
(970) 225-6080
WWW.WETEC.US

SEAL

REFERENCES				REFERENCES				REVISIONS							REVISIONS						
DWG. NO.	TITLE			DWG. NO.	TITLE			NO.	BY	CKD	APP	CLIENT	DATE	DESCRIPTION	NO.	BY	CKD	APP	CLIENT	DATE	DESCRIPTION



ROSEMONT PROJECT

STOCK TANK REMOVAL

ROSEMONT CREST STOCK TANK
REMOVAL PLAN

NOT FOR CONSTRUCTION

CONTRACTOR DWG. NO.
S.TANK 4

DWG. NO.

REVISION | DATE
09/08/2017