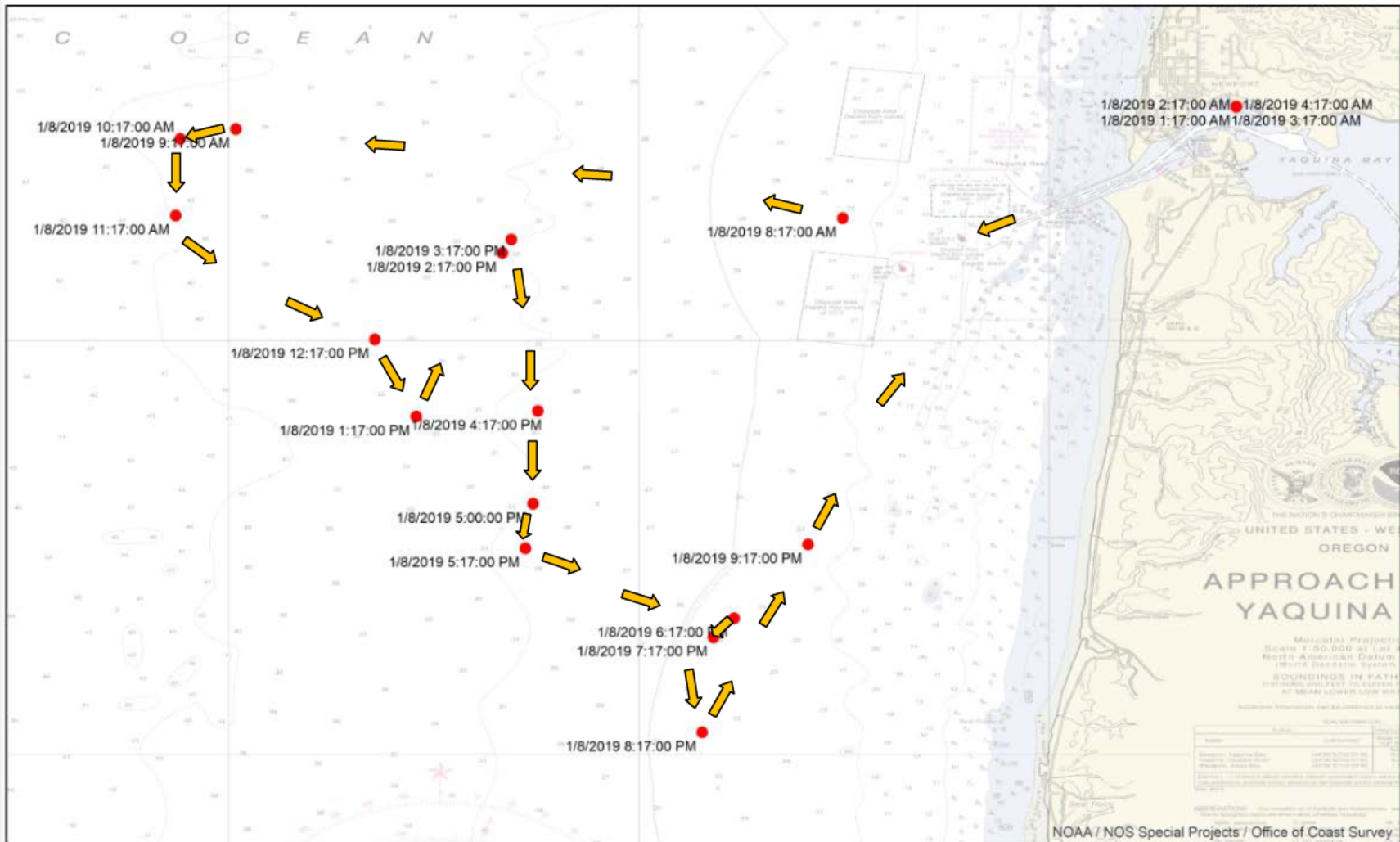


NOTE: Arrows → between FV MARY B II positions are to establish sequence of movement and *do not reflect actual vessel movement*. Positions and times indicated by the red dots are accurate.

MARY B II Investigation

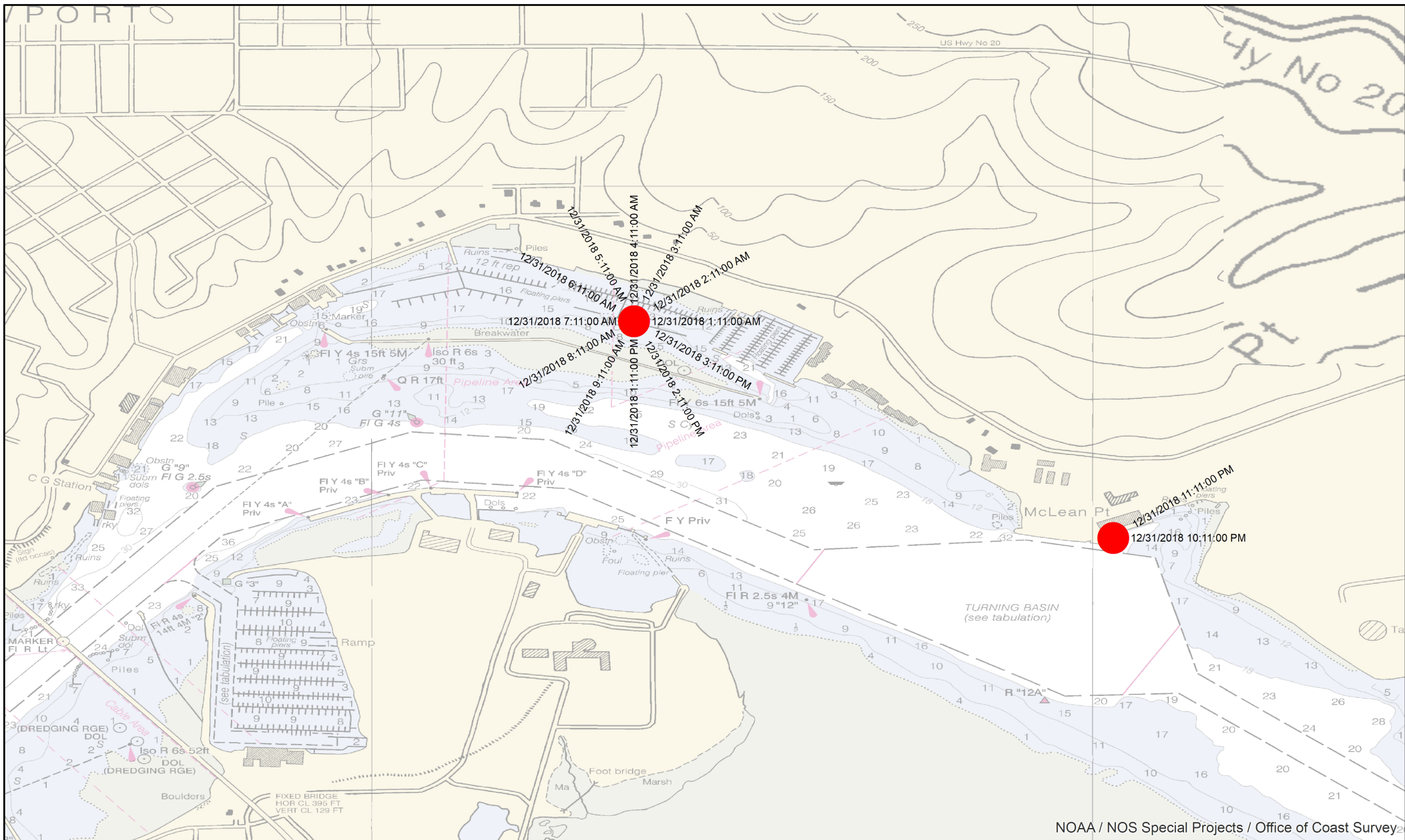


2 1 0 2 Nautical Miles
Coordinate System: GCS WGS 1984
Datum: WGS 1984

Mary B II VMS Data (Date/Time Labels are in Pacific Standard Time)

● MARY B II Vessel Position Reports 08JAN2019

MARY B II Investigation



NOAA / NOS Special Projects / Office of Coast Survey2



560 280 0 560 Yards

Coordinate System: GCS WGS 1984
Datum: WGS 1984

0-1445100-0

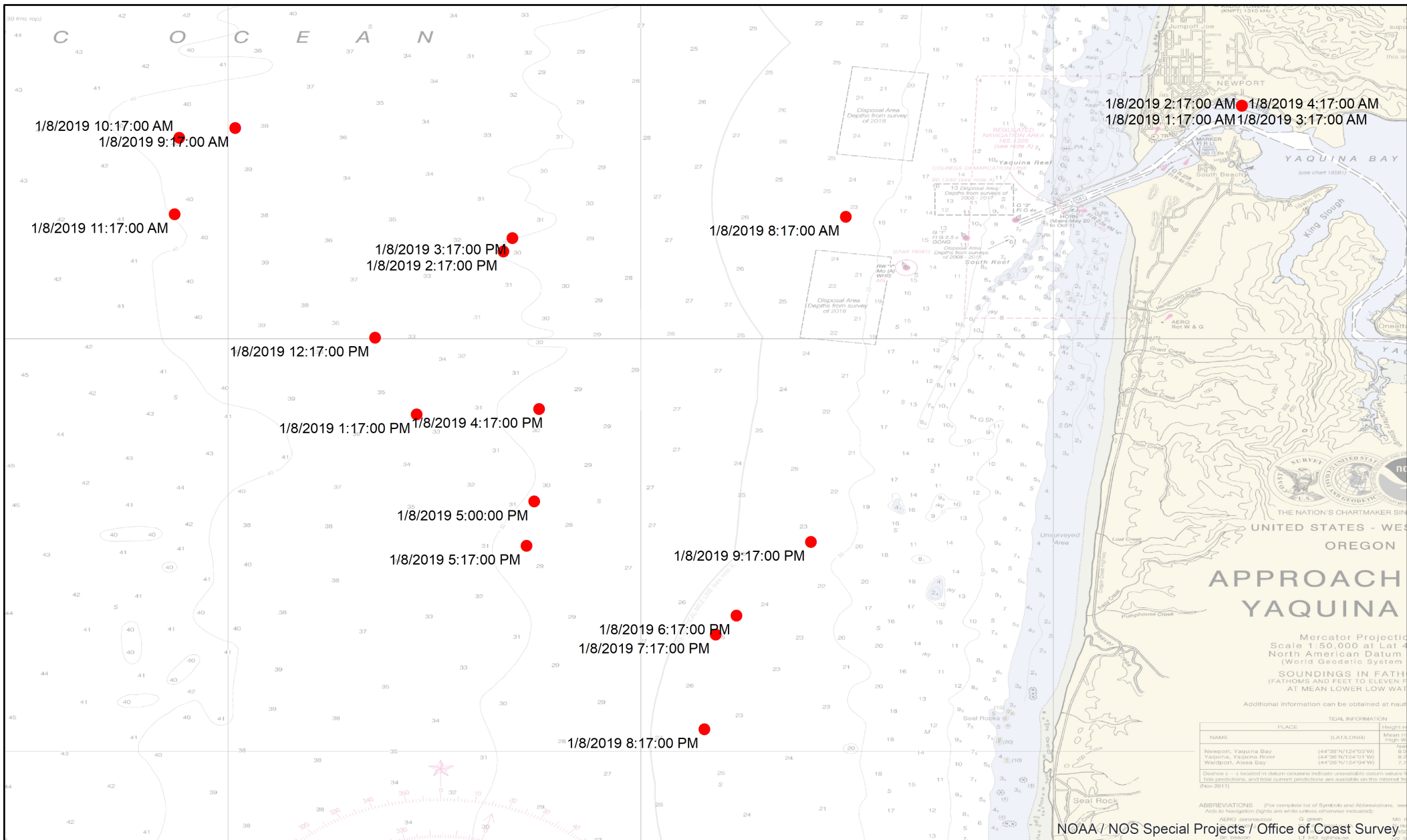
Mary B II VMS Data (Date/Time Labels are in Pacific Standard Time)

MARY B II Vessel Position Reports 31DEC2018

Page 2 of 47

MARY B II VMS Chartlets and Positions Dec 18 and Jan 19

MARY B II Investigation



2 1 0 2 Nautical Miles

Coordinate System: GCS WGS 1984
Datum: WGS 1984

**Mary B II VMS Data (Date/Time Labels
are in Pacific Standard Time)**

MARY B II Vessel Position Reports 08 JAN 2019

CG 042 BESS CHET MARY B II VMS Chartlets and Positions Dec 18 and Jan 19Page 10 of 47

CG 042 BESS CHET MARY B II VMS Chartlets and Positions Dec 18 and Jan 19Page 11 of 47

CG 042 BESS CHET MARY B II VMS Chartlets and Positions Dec 18 and Jan 19Page 12 of 47

CG 042 BESS CHET MARY B II VMS Chartlets and Positions Dec 18 and Jan 19Page 13 of 47

CG 042 BESS CHET MARY B II VMS Chartlets and Positions Dec 18 and Jan 19Page 14 of 47

CG 042 BESS CHET MARY B II VMS Chartlets and Positions Dec 18 and Jan 19Page 15 of 47

CG 042 BESS CHET MARY B II VMS Chartlets and Positions Dec 18 and Jan 19Page 16 of 47

CG 042 BESS CHET MARY B II VMS Chartlets and Positions Dec 18 and Jan 19Page 17 of 47

CG 042 BESS CHET MARY B II VMS Chartlets and Positions Dec 18 and Jan 19Page 19 of 47

X02169	274604	Bess Chet	261	TPREP	2018-12-0160	0	0.0	0
X02169	274604	Bess Chet	261	TPREP	2018-12-0160	0	0.0	0
X02169	274604	Bess Chet	261	TPREP	2018-12-0160	0	0.0	0
X02169	274604	Bess Chet	261	TPREP	2018-12-0160	0	0.0	0
X02169	274604	Bess Chet	261	TPREP	2018-12-0160	0	0.0	0
X02169	274604	Bess Chet	261	TPREP	2018-12-0160	0	0.0	0
X02169	274604	Bess Chet	261	TPREP	2018-12-0160	0	0.0	0
X02169	274604	Bess Chet	261	TPREP	2018-12-0160	0	0.0	0
X02169	274604	Bess Chet	261	TPREP	2018-12-0160	0	0.0	0
X02169	274604	Bess Chet	261	TPREP	2018-12-0160	0	0.0	0
X02169	274604	Bess Chet	261	TPREP	2018-12-0160	0	0.0	0
X02169	274604	Bess Chet	261	TPREP	2018-12-0161	0	0.0	0
X02169	274604	Bess Chet	261	TPREP	2018-12-0160	0	0.0	0
X02169	274604	Bess Chet	261	TPREP	2018-12-0160	0	0.0	0
X02169	274604	Bess Chet	261	TPREP	2018-12-0160	0	0.0	0
X02169	274604	Bess Chet	261	TPREP	2018-12-0160	0	0.0	0
X02169	274604	Bess Chet	261	TPREP	2018-12-0160	0	0.0	0
X02169	274604	Bess Chet	261	TPREP	2018-12-0160	0	0.0	0
X02169	274604	Bess Chet	261	TPREP	2018-12-0160	0	0.0	0
X02169	274604	Bess Chet	261	TPREP	2018-12-0160	0	0.0	0
X02169	274604	Bess Chet	261	TPREP	2018-12-0149	0	0.0	0
X02169	274604	Bess Chet	261	UNKNW	2018-12-0111	0	0.0	0
X02169	274604	Bess Chet	261	TPREP	2018-12-0160	0	0.0	0

[illegible]

[illegible]

CG 042 BESS CHET MARY B II VMS Chartlets and Positions Dec 18 and Jan 19Page 38 of 47

CG 042 BESS CHET MARY B II VMS Chartlets and Positions Dec 18 and Jan 19Page 39 of 47

CG 042 BESS CHET MARY B II VMS Chartlets and Positions Dec 18 and Jan 19Page 40 of 47

X02169	274604	Bess Chet	261	TPREP	2019-01-01 06:00	0	0.0	0
X02169	274604	Bess Chet	261	TPREP	2019-01-01 06:00	0	0.0	0
X02169	274604	Bess Chet	261	TPREP	2019-01-01 06:00	0	0.0	0
X02169	274604	Bess Chet	261	TPREP	2019-01-01 06:00	0	0.0	0
X02169	274604	Bess Chet	261	TPREP	2019-01-01 06:00	0	0.0	0
X02169	274604	Bess Chet	261	TPREP	2019-01-01 06:00	0	0.0	0
X02169	274604	Bess Chet	261	TPREP	2019-01-01 06:00	0	0.0	0
X02169	274604	Bess Chet	261	TPREP	2019-01-01 06:00	0	0.0	0
X02169	274604	Bess Chet	261	TPREP	2019-01-01 06:00	0	0.0	0
X02169	274604	Bess Chet	261	TPREP	2019-01-01 06:00	0	0.0	0
X02169	274604	Bess Chet	261	TPREP	2019-01-01 06:00	0	0.0	0
X02169	274604	Bess Chet	261	TPREP	2019-01-01 06:00	0	0.0	0
X02169	274604	Bess Chet	261	TPREP	2019-01-01 06:00	0	0.0	0
X02169	274604	Bess Chet	261	TPREP	2019-01-01 06:00	0	0.0	0
X02169	274604	Bess Chet	261	TPREP	2019-01-01 06:14	0	0.0	0
X02169	274604	Bess Chet	261	UNKNW	2019-01-01 06:46	0	0.0	0
X02169	274604	Bess Chet	261	TPREP	2019-01-01 06:00	0	0.0	0
X02169	274604	Bess Chet	261	TPREP	2019-01-01 06:00	0	0.0	0
X02169	274604	Bess Chet	261	TPREP	2019-01-01 06:00	0	0.0	0
X02169	274604	Bess Chet	261	TPREP	2019-01-01 06:00	0	0.0	315
X02169	274604	Bess Chet	261	TPREP	2019-01-01 06:00	4	1.0	84
X02169	274604	Bess Chet	261	TPREP	2019-01-01 06:00	209	4.0	164
X02169	274604	Bess Chet	261	TPREP	2019-01-01 06:00	349	5.0	109
X02169	274604	Bess Chet	261	TPREP	2019-01-01 06:00	170	5.0	14
X02169	274604	Bess Chet	261	TPREP	2019-01-01 06:01	6	7.0	3
X02169	274604	Bess Chet	261	TPREP	2019-01-01 06:00	173	4.0	94
X02169	274604	Bess Chet	261	TPREP	2019-01-01 06:00	346	4.0	336
X02169	274604	Bess Chet	261	TPREP	2019-01-01 06:00	0	0.0	321
X02169	274604	Bess Chet	261	TPREP	2019-01-01 06:00	0	0.0	305
X02169	274604	Bess Chet	261	TPREP	2019-01-01 06:00	0	0.0	37
X02169	274604	Bess Chet	261	TPREP	2019-01-01 06:00	346	6.0	216
X02169	274604	Bess Chet	261	TPREP	2019-01-01 06:00	214	6.0	230
X02169	274604	Bess Chet	261	TPREP	2019-01-01 06:00	226	8.0	256
X02169	274604	Bess Chet	261	TPREP	2019-01-01 06:00	0	0.0	0
X02169	274604	Bess Chet	261	TPREP	2019-01-01 06:00	0	0.0	70
X02169	274604	Bess Chet	261	TPREP	2019-01-01 06:00	52	8.0	124
X02169	274604	Bess Chet	261	TPREP	2019-01-01 06:00	138	6.0	49
X02169	274604	Bess Chet	261	TPREP	2019-01-01 06:00	0	4.0	333
X02169	274604	Bess Chet	261	TPREP	2019-01-01 06:00	354	4.0	326
X02169	274604	Bess Chet	261	TPREP	2019-01-01 13:00	122	5.0	157
X02169	274604	Bess Chet	261	UNKNW	2019-01-01 06:47	191	5.0	216
X02169	274604	Bess Chet	261	TPREP	2019-01-01 06:00	244	6.0	238
X02169	274604	Bess Chet	261	TPREP	2019-01-01 06:00	0	0.0	0
X02169	274604	Bess Chet	261	TPREP	2019-01-01 06:00	0	0.0	300
X02169	274604	Bess Chet	261	TPREP	2019-01-01 06:00	0	0.0	0
X02169	274604	Bess Chet	261	TPREP	2019-01-01 06:00	0	0.0	84
X02169	274604	Bess Chet	261	TPREP	2019-01-01 06:00	161	6.0	147

X02169	274604	Bess Chet	261	TPREP	2019-01-0160	11	5.0	12
X02169	274604	Bess Chet	261	TPREP	2019-01-0160	354	5.0	343
X02169	274604	Bess Chet	261	TPREP	2019-01-0160	358	5.0	0
X02169	274604	Bess Chet	261	TPREP	2019-01-0160	358	4.0	145
X02169	274604	Bess Chet	261	TPREP	2019-01-0160	191	5.0	216
X02169	274604	Bess Chet	261	TPREP	2019-01-0160	238	6.0	246
X02169	274604	Bess Chet	261	TPREP	2019-01-0160	0	0.0	0
X02169	274604	Bess Chet	261	TPREP	2019-01-0160	0	0.0	0
X02169	274604	Bess Chet	261	TPREP	2019-01-0160	0	0.0	0
X02169	274604	Bess Chet	261	TPREP	2019-01-0160	0	0.0	0
X02169	274604	Bess Chet	261	TPREP	2019-01-0161	0	0.0	0
X02169	274604	Bess Chet	261	TPREP	2019-01-0160	0	0.0	0
X02169	274604	Bess Chet	261	TPREP	2019-01-0160	0	0.0	123
X02169	274604	Bess Chet	261	TPREP	2019-01-0160	0	0.0	0
X02169	274604	Bess Chet	261	TPREP	2019-01-0160	0	0.0	0
X02169	274604	Bess Chet	261	TPREP	2019-01-0160	0	0.0	0
X02169	274604	Bess Chet	261	TPREP	2019-01-0160	0	0.0	0
X02169	274604	Bess Chet	261	TPREP	2019-01-0112	0	0.0	0
X02169	274604	Bess Chet	261	UNKNW	2019-01-0148	0	0.0	0
X02169	274604	Bess Chet	261	TPREP	2019-01-0160	0	0.0	0

0.0	44°37.8114	-124°02.62	44.63019	-124.04372	Faria (IRIDIUM)
0.0	44°37.8114	-124°02.62	44.63019	-124.04372	Faria (IRIDIUM)
0.0	44°37.8114	-124°02.62	44.63019	-124.04372	Faria (IRIDIUM)
0.0	44°37.8114	-124°02.62	44.63019	-124.04372	Faria (IRIDIUM)
0.0	44°37.8114	-124°02.62	44.63019	-124.04372	Faria (IRIDIUM)
0.0	44°37.8114	-124°02.62	44.63019	-124.04372	Faria (IRIDIUM)
0.0	44°37.8114	-124°02.62	44.63019	-124.04372	Faria (IRIDIUM)
0.0	44°37.8114	-124°02.62	44.63019	-124.04372	Faria (IRIDIUM)
0.0	44°37.8114	-124°02.62	44.63019	-124.04372	Faria (IRIDIUM)
0.0	44°37.8114	-124°02.62	44.63019	-124.04372	Faria (IRIDIUM)
0.0	44°37.8114	-124°02.62	44.63019	-124.04372	Faria (IRIDIUM)
0.0	44°37.8114	-124°02.62	44.63019	-124.04372	Faria (IRIDIUM)
0.0	44°37.8114	-124°02.62	44.63019	-124.04372	Faria (IRIDIUM)
0.0	44°37.8114	-124°02.62	44.63019	-124.04372	Faria (IRIDIUM)
0.0	44°37.8114	-124°02.62	44.63019	-124.04372	Faria (IRIDIUM)
0.0	44°37.8114	-124°02.62	44.63019	-124.04372	Faria (IRIDIUM)
0.0	44°37.8114	-124°02.62	44.63019	-124.04372	Faria (IRIDIUM)
0.0	44°37.8114	-124°02.62	44.63019	-124.04372	Faria (IRIDIUM)
0.0	44°37.8114	-124°02.62	44.63019	-124.04372	Faria (IRIDIUM)
0.0	44°37.8114	-124°02.62	44.63019	-124.04372	Faria (IRIDIUM)
0.0	44°37.8114	-124°02.62	44.63019	-124.04372	Faria (IRIDIUM)
0.0	44°37.8114	-124°02.62	44.63019	-124.04372	Faria (IRIDIUM)
2.5	44°37.7994	-124°02.56	44.62999	-124.04281	Faria (IRIDIUM)
4.1	44°37.5516	-124°06.05	44.62586	-124.10097	Faria (IRIDIUM)
1.2	44°41.4724	-124°07.67	44.691208	-124.12797	Faria (IRIDIUM)
4.5	44°41.889	-124°09.31	44.69815	-124.15517	Faria (IRIDIUM)
4.0	44°37.5205	-124°10.81	44.625343	-124.18027	Faria (IRIDIUM)
1.0	44°33.4426	-124°11.14	44.557377	-124.18571	Faria (IRIDIUM)
0.7	44°33.5314	-124°12.55	44.558857	-124.20924	Faria (IRIDIUM)
0.5	44°32.8438	-124°12.12	44.547398	-124.20204	Faria (IRIDIUM)
0.4	44°32.4744	-124°11.67	44.54124	-124.19462	Faria (IRIDIUM)
2.5	44°32.2045	-124°11.22	44.536743	-124.18703	Faria (IRIDIUM)
3.4	44°30.2547	-124°13.25	44.504246	-124.22092	Faria (IRIDIUM)
6.4	44°33.0306	-124°10.47	44.55051	-124.17465	Faria (IRIDIUM)
1.2	44°37.2102	-124°03.64	44.62017	-124.06068	Faria (IRIDIUM)
0.0	44°37.5072	-124°01.97	44.62512	-124.03288	Faria (IRIDIUM)
1.4	44°37.5072	-124°01.97	44.62512	-124.03288	Faria (IRIDIUM)
6.0	44°37.0339	-124°03.84	44.617233	-124.06406	Faria (IRIDIUM)
4.6	44°40.3690	-124°10.85	44.672817	-124.18089	Faria (IRIDIUM)
4.4	44°37.3248	-124°15.67	44.62208	-124.26123	Faria (IRIDIUM)
2.1	44°33.4149	-124°12.81	44.556915	-124.21358	Faria (IRIDIUM)
2.3	44°31.7026	-124°11.18	44.528378	-124.18637	Faria (IRIDIUM)
4.6	44°32.1668	-124°11.48	44.536114	-124.19147	Faria (IRIDIUM)
5.0	44°35.1459	-124°08.50	44.585766	-124.1418	Faria (IRIDIUM)
0.0	44°37.8012	-124°02.61	44.63002	-124.04362	Faria (IRIDIUM)
0.5	44°37.8007	-124°02.61	44.630013	-124.04362	Faria (IRIDIUM)
0.0	44°37.5117	-124°01.97	44.625195	-124.03285	Faria (IRIDIUM)
3.2	44°37.5109	-124°01.97	44.625183	-124.03285	Faria (IRIDIUM)
4.6	44°37.1935	-124°06.46	44.619892	-124.1078	Faria (IRIDIUM)

5.3	44°41.067	-124°09.96	44.68445	-124.16604	Faria (IRIDIUM)
5.8	44°35.9082	-124°11.54	44.59847	-124.19237	Faria (IRIDIUM)
0.7	44°30.3108	-124°09.21	44.50518	-124.15358	Faria (IRIDIUM)
2.1	44°29.6736	-124°09.22	44.49456	-124.15373	Faria (IRIDIUM)
5.8	44°31.4412	-124°10.93	44.52402	-124.18217	Faria (IRIDIUM)
3.3	44°36.1398	-124°06.21	44.60233	-124.1035	Faria (IRIDIUM)
0.0	44°37.5123	-124°01.97	44.625206	-124.03285	Faria (IRIDIUM)
0.0	44°37.5123	-124°01.97	44.625206	-124.03285	Faria (IRIDIUM)
0.0	44°37.5123	-124°01.97	44.625206	-124.03285	Faria (IRIDIUM)
0.0	44°37.5123	-124°01.97	44.625206	-124.03285	Faria (IRIDIUM)
0.0	44°37.5123	-124°01.97	44.625206	-124.03285	Faria (IRIDIUM)
0.0	44°37.5123	-124°01.97	44.625206	-124.03285	Faria (IRIDIUM)
0.6	44°37.5123	-124°01.97	44.625206	-124.03285	Faria (IRIDIUM)
0.0	44°37.8129	-124°02.63	44.630215	-124.04393	Faria (IRIDIUM)
0.0	44°37.8129	-124°02.63	44.630215	-124.04393	Faria (IRIDIUM)
0.0	44°37.8129	-124°02.63	44.630215	-124.04393	Faria (IRIDIUM)
0.0	44°37.8129	-124°02.63	44.630215	-124.04393	Faria (IRIDIUM)
0.0	44°37.8129	-124°02.63	44.630215	-124.04393	Faria (IRIDIUM)
0.0	44°37.8129	-124°02.63	44.630215	-124.04393	Faria (IRIDIUM)
0.0	44°37.8129	-124°02.63	44.630215	-124.04393	Faria (IRIDIUM)