

## **Appendix A7**

### **Other Modeling Output for High-Tempo FCLP Year Scenarios**

This page intentionally left blank.

## List of Figures

Figure A7.2-1	DNL Contours for AAD Aircraft Events for the Average Year and High-Tempo FCLP Year No Action Alternative.....	A7-15
Figure A7.3-1	Estimated Aircraft DNL at POIs for the High-Tempo FCLP Year, Alternative 1.....	A7-25
Figure A7.4-1	Estimated Aircraft DNL at POIs for the High-Tempo FCLP Year, Alternative 2.....	A7-39
Figure A7.5-1	Estimated Aircraft DNL at POIs for the High-Tempo FCLP Year, Alternative 3.....	A7-54

This page intentionally left blank.

## List of Tables

Table A7.0-1	Summary of Noise Exposure Results for the High-Tempo FCLP Year .....	A7-7
Table A7.1-1	Estimated Acreage and Population within the DNL Contour Ranges <sup>1</sup> for the High-Tempo FCLP Year for Baseline Conditions at the NAS Whidbey Island Complex .....	A7-8
Table A7.1-2	Estimated Aircraft DNL at POIs for the High-Tempo FCLP Year Baseline Scenario .....	A7-9
Table A7.1-3	Average and 10th Percentile Noise Induced Permanent Threshold Shifts as a Function of Equivalent Sound Level at the NAS Whidbey Island Complex for Max Year Baseline Conditions .....	A7-10
Table A7.1-4	Average Indoor Nightly Probability of Awakening at Applicable POIs for the High-Tempo FCLP Year Baseline Scenario .....	A7-11
Table A7.1-5	Indoor Speech Interference for the High-Tempo FCLP Year Baseline Scenario .....	A7-12
Table A7.1-6	Classroom Learning Interference for the High-Tempo FCLP Year Baseline Scenario .....	A7-13
Table A7.1-7	Recreational Speech Interference for the High-Tempo FCLP Year Baseline Scenario .....	A7-14
Table A7.2-1	Estimated Acreage and Population within the DNL Contour Ranges <sup>1</sup> for the High-Tempo FCLP Year No Action Alternative at the NAS Whidbey Island Complex.....	A7-16
Table A7.2-2	Estimated Aircraft DNL at POIs for the High-Tempo FCLP Year No Action Alternative .....	A7-17
Table A7.2-3	Average and 10th Percentile Noise Induced Permanent Threshold Shifts as a Function of Equivalent Sound Level at the NAS Whidbey Island Complex for Max Year No Action Alternative .....	A7-18
Table A7.2-4	Average Indoor Nightly Probability of Awakening at Applicable POIs for the High-Tempo FCLP Year No Action Alternative.....	A7-19
Table A7.2-5	Indoor Speech Interference for the High-Tempo FCLP Year No Action Alternative...	A7-20
Table A7.2-6	Classroom Learning Interference for the High-Tempo FCLP Year No Action Alternative .....	A7-21
Table A7.2-7	Recreational Speech Interference for the High-Tempo FCLP Year No Action Alternative .....	A7-22
Table A7.3-1	Estimated Acreage and Population within the DNL Contour Ranges <sup>1</sup> for the NAS Whidbey Island Complex, Alternative 1 (High-Tempo FCLP Year) <sup>2,3</sup> .....	A7-23
Table A7.3-2	Estimated Potential Hearing Loss for the High-Tempo FCLP Year, Alternative 1A.....	A7-29
Table A7.3-3	Estimated Potential Hearing Loss for the High-Tempo FCLP Year, Alternative 1B.....	A7-29
Table A7.3-4	Estimated Potential Hearing Loss for the High-Tempo FCLP Year, Alternative 1C.....	A7-30
Table A7.3-5	Estimated Potential Hearing Loss for the High-Tempo FCLP Year, Alternative 1D.....	A7-30
Table A7.3-6	Estimated Potential Hearing Loss for the High-Tempo FCLP Year, Alternative 1E .....	A7-31
Table A7.3-7	Average Indoor Nightly Probability of Awakening at Applicable POIs for the High-Tempo FCLP Year, Alternative 1.....	A7-32

Table A7.3-8 Indoor Speech Interference for the High-Tempo FCLP Year, Alternative 1..... A7-33

Table A7.3-9 Classroom Learning Interference for the High-Tempo FCLP Year, Alternative 1 ..... A7-34

Table A7.3-10 Recreational Speech Interference for High-Tempo FCLP Year, Alternative 1 ..... A7-36

Table A7.4-1 Estimated Acreage and Population within the DNL Contour Ranges<sup>1</sup> for the NAS Whidbey Island Complex, Alternative 2 (High-Tempo FCLP Year)<sup>2,3</sup> ..... A7-37

Table A7.4-2 Estimated Potential Hearing Loss for the High-Tempo FCLP Year, Alternative 2A..... A7-43

Table A7.4-3 Estimated Potential Hearing Loss for the High-Tempo FCLP Year, Alternative 2B..... A7-44

Table A7.4-4 Estimated Potential Hearing Loss for the High-Tempo FCLP Year, Alternative 2C..... A7-45

Table A7.4-5 Estimated Potential Hearing Loss for the High-Tempo FCLP Year, Alternative 2D..... A7-45

Table A7.4-6 Estimated Potential Hearing Loss for the High-Tempo FCLP Year, Alternative 2E ..... A7-46

Table A7.4-7 Average Indoor Nightly Probability of Awakening at Applicable POIs for the High-Tempo FCLP Year, Alternative 2..... A7-47

Table A7.4-8 Indoor Speech Interference for the High-Tempo FCLP Year, Alternative 2..... A7-48

Table A7.4-9 Classroom Learning Interference for the High-Tempo FCLP Year, Alternative 2 ..... A7-49

Table A7.4-10 Recreational Speech Interference for the High-Tempo FCLP Year, Alternative 2 ..... A7-51

Table A7.5-1 Estimated Acreage and Population within the DNL Contour Ranges<sup>1</sup> for the NAS Whidbey Island Complex, Alternative 3 (High-Tempo FCLP Year)<sup>2,3</sup> ..... A7-52

Table A7.5-2 Estimated Potential Hearing Loss for the High-Tempo FCLP Year, Alternative 3A..... A7-58

Table A7.5-3 Estimated Potential Hearing Loss for the High-Tempo FCLP Year, Alternative 3B..... A7-59

Table A7.5-4 Estimated Potential Hearing Loss for the High-Tempo FCLP Year, Alternative 3C..... A7-60

Table A7.5-5 Estimated Potential Hearing Loss for the High-Tempo FCLP Year, Alternative 3D..... A7-60

Table A7.5-6 Estimated Potential Hearing Loss for the High-Tempo FCLP Year, Alternative 3E ..... A7-61

Table A7.5-7 Average Indoor Nightly Probability of Awakening at Applicable POIs for the High-Tempo FCLP Year, Alternative 3..... A7-62

Table A7.5-8 Indoor Speech Interference for the High-Tempo FCLP Year, Alternative 3..... A7-63

Table A7.5-9 Classroom Learning Interference for the High-Tempo FCLP Year, Alternative 3 ..... A7-64

Table A7.5-10 Recreational Speech Interference for the High-Tempo FCLP Year, Alternative 3 ..... A7-66

**Table A7.0-1 Summary of Noise Exposure Results for the High-Tempo FCLP Year**

			Alternative 1					Alternative 2					Alternative 3				
			A	B	C	D	E	A	B	C	D	E	A	B	C	D	E
<b>Population Exposed to ≥65 dB DNL, Both Airfields</b>	Population		11,863	12,227	12,267	12,208	12,326	11,754	12,153	12,070	12,052	12,143	11,751	12,129	12,007	12,065	12,187
	Change from No Action (10,916)		+1519	+2150	+2386	+2150	+2386	+1567	+2035	+2180	+2035	+2180	+1597	+2081	+2175	+2081	+2175
			15%	18%	19%	18%	19%	14%	17%	17%	17%	17%	14%	17%	16%	17%	18%
<b>DNL at POI (Change from No Action)</b>	Decrease of	5 dB or more	-	-	2	-	5	-	-	-	-	-	-	-	1	-	-
		3-4 dB	-	3	10	-	7	-	4	12	-	12	-	1	11	-	12
		1-2 dB	-	10	1	6	-	1	11	1	4	-	2	14	-	9	-
	No Change		20	32	30	30	31	18	28	32	32	32	18	28	30	27	30
		1 dB	9	3	4	-	4	11	5	3	-	4	12	5	6	-	6
		2-3 dB	10	-	1	-	1	9	-	-	-	7	-	-	-	-	-
	Increase of	4-5 dB	4	-	-	-	-	4	-	-	10	-	4	-	-	-	5
		6-10 dB	4	-	-	12	-	4	-	-	2	-	4	-	-	-	7
		11-15 dB	1	-	-	-	-	1	-	-	-	-	1	-	-	-	-
		>15 dB	-	-	-	-	-	-	-	-	-	-	-	-	-	-	-
Newly ≥65 dB DNL		2	2	2	2	2	2	2	2	2	2	2	2	2	2	2	
<b>Population of Average NIPTS ≥5 dB</b>	Population		113	67	74	69	72	104	68	76	62	74	101	67	75	61	73
	Change from No Action (40)		+75	+29	+36	+31	+34	+66	+30	+38	+24	+36	+63	+29	+37	+23	+35
			208%	81%	100%	86%	94%	183%	83%	106%	67%	100%	175%	81%	103%	64%	97%
<b>Annual Avg Nightly PA at Residential POI (Change from No Action in %PA)</b>	Decrease of	1-10%	-	-	-	-	-	-	-	-	-	-	-	-	-	-	-
		No Change	6	7	12	8	8	6	8	11	7	9	7	8	10	7	8
	Increase of	1-10%	17	18	13	16	19	19	19	16	19	18	17	19	17	17	19
		11-20%	5	5	5	4	3	3	3	3	3	3	4	3	3	4	3
		21-30%	1	-	-	1	-	2	-	-	1	-	1	-	-	-	2
		31-40%	1	-	-	1	-	-	-	-	-	-	1	-	-	-	-
		41-50%	-	-	-	-	-	-	-	-	-	-	-	-	-	-	-
		51-60%	-	-	-	-	-	-	-	-	-	-	-	-	-	-	-
61% or more	-	-	-	-	-	-	-	-	-	-	-	-	-	-	-		
<b>Daytime Indoor Speech Interference at Residential POI (Change from No Action)</b>	Decrease of	1-2 events/hr	-	-	-	-	-	-	-	-	-	-	-	-	-	-	-
		No Change	19	16	19	16	17	17	15	19	16	18	18	16	19	16	18
	Increase of	1-2 events/hr	11	14	11	14	13	13	15	11	14	12	12	14	11	14	12
3-4 events/hr		-	-	-	-	-	-	-	-	-	-	-	-	-	-	-	
<b>Classroom Learning Interference at School POI (Change from No Action)</b>	Decrease of	1-2 events/hr	-	-	-	-	-	-	-	-	-	-	-	-	-	-	-
		No Change	9	8	8	9	8	7	7	7	8	8	7	7	8	7	8
	Increase of	1-2 events/hr	3	4	4	3	4	5	5	5	4	4	5	5	4	5	4
		3-4 events/hr	-	-	-	-	-	-	-	-	-	-	-	-	-	-	-
5-6 events/hr	-	-	-	-	-	-	-	-	-	-	-	-	-	-	-		
<b>Recreational Speech Interference at Outdoor/Park POI (Change from No Action)</b>	Decrease of	1 events/hr	-	-	1	-	-	-	-	1	-	-	-	-	1	-	-
		No Change	15	14	25	13	17	11	13	23	12	17	12	13	25	13	17
	Increase of	1-2 events/hr	33	34	22	35	31	37	35	24	36	31	36	35	22	35	31
		3-4 events/hr	-	-	-	-	-	-	-	-	-	-	-	-	-	-	-
5-6 events/hr	-	-	-	-	-	-	-	-	-	-	-	-	-	-	-		

**Table A7.1-1 Estimated Acreage and Population within the DNL Contour Ranges<sup>1</sup> for the High-Tempo FCLP Year for Baseline Conditions at the NAS Whidbey Island Complex**

<i>DNL Contours</i>	<i>DNL Contour Ranges</i>							
	<i>65 to &lt;70 dB DNL</i>		<i>70 to &lt;75 dB DNL</i>		<i>Greater than or equal to 75 dB DNL</i>		<i>Total<sup>3</sup></i>	
	<i>Area (acres)</i>	<i>Pop<sup>2</sup></i>	<i>Area (acres)</i>	<i>Pop<sup>2</sup></i>	<i>Area (acres)</i>	<i>Pop<sup>2</sup></i>	<i>Area (acres)</i>	<i>Pop<sup>2</sup></i>
Ault Field	3,545	3,534	3,166	2,445	5,955	3,589	12,666	9,568
OLF Coupeville	4,003	979	3,178	841	742	607	7,923	2,427
<b>Total<sup>3</sup></b>	<b>7,548</b>	<b>4,513</b>	<b>6,345</b>	<b>3,286</b>	<b>6,697</b>	<b>4,196</b>	<b>20,590</b>	<b>11,995</b>

Notes:

- <sup>1</sup> Acreage presented does not include areas over water or areas over the NAS Whidbey Island complex.
- <sup>2</sup> Population counts of people within the DNL contours were computed using 2010 census block-level data. The percent area of the census block covered by the DNL contour range was applied to the population of that census block to estimate the population within the DNL contour range (e.g., if 25 percent of the census block is within a DNL contour, then 25 percent of the population is included in the population count). This calculation assumes an even distribution of the population across the census block, and it excludes population on military properties within the DNL contours (NAS Whidbey Island [Ault Field], the Seaplane Base, and OLF Coupeville). All population estimates for areas under the dB DNL contours utilized 2010 U.S. Census Bureau data. A 7.1-percent growth factor was applied to the 2010 census statistics to account for population changes between 2010 and 2020 based on medium forecasted population projections for Island County during that period (Washington State Office of Financial Management, 2017). To simplify the analysis, this growth factor was also used for areas of Skagit County that fall under the 65+ dB DNL contours. These data should be used for comparative purposes only and are not considered actual numbers within the DNL contour range.
- <sup>3</sup> Numbers have been rounded to ensure totals sum.

Key:

- dB = decibel
- DNL = day-night average sound level



**Table A7.1-2 Estimated Aircraft DNL at POIs for the High-Tempo FCLP Year Baseline Scenario**

Point of Interest			
ID	Description	Related Field	DNL (dB)
P01	Joseph Whidbey State Park	Ault	57
P02	Deception Pass State Park	Ault	74
P03	Dugualla State Park	Ault	65
P04	Baseball Field (Ebey's Landing National Historical Reserve)	OLF	74
P05	Ebey's Landing State Park	OLF	52
P06	Fort Casey State Park	OLF	62
P07	Cama Beach State Park	OLF	<45
P08	Port Townsend	None	<45
P09	Moran State Park	None	<45
P10	San Juan Islands National Monument	None	54
P11	San Juan Island Visitors Center	None	<45
P12	Cap Sante Park	Ault	<45
P13	Lake Campbell	Ault	54
P14	Spencer Spit State Park	None	<45
P15	Pioneer Park	Ault	55
P16	Marrowstone Island (Fort Flagler)	OLF	<45
BLA0	Reuble Farm	OLF	69
BLA0	Ferry House	OLF	56
R01	Sullivan Rd	Ault	90
R02	Salal St. and N. Northgate Dr	Ault	78
R03	Central Whidbey	Ault	57
R04	Pull and Be Damned Point	Ault	62
R05	Snee-Oosh Point	Ault	57
R06	Admirals Dr and Byrd Dr	OLF	79
R07	Race Lagoon	OLF	61
R08	Pratts Bluff	OLF	63
R09	Cox Rd and Island Ridge Way	OLF	50
R10	Skyline	None	57
R11	Sequim	None	<45
R12	Port Angeles	None	<45
R13	Beverly Beach, Freeland	OLF	<45
R14	E Sleeper Rd & Slumber Ln	Ault	75
R15	Long Point Manor	OLF	65
R16	Rocky Point Heights	OLF	55
R17	Port Townsend	None	<45
R18	Marrowstone Island (Nordland)	None	<45
R19	Island Transit Offices, Coupeville	OLF	73
R20	South Lopez Island (Agate Beach)	None	48
S01	Oak Harbor High School	Ault	60
S02	Crescent Harbor Elementary School	Ault	68
S03	Coupeville Elementary School	OLF	58
S04	Anacortes High School	Ault	48
S05	Lopez Island School	None	<45
S06	Friday Harbor Elementary School	None	<45
S07	Sir James Douglas Elementary School	None	<45
S08	Fidalgo Elementary School	Ault	52
S09	La Conner Elementary School	Ault	53
S10	Elger Bay Elementary School	OLF	<45

**Table A7.1-3 Average and 10th Percentile Noise Induced Permanent Threshold Shifts as a Function of Equivalent Sound Level at the NAS Whidbey Island Complex for Max Year Baseline Conditions**

Band of Leq(24) (dB)	Average NIPTS (dB) <sup>1</sup>	10th Percentile NIPTS (dB) <sup>1</sup>	Estimated Population <sup>2, 3, 4</sup>			Total
			Ault Field (on-station)	Ault Field (off-station)	OLF Coupeville (off-station)	
74-75	0.5	3.5	-	-	-	-
75-76	1.0	4.0	-	-	51	51
76-77	1.0	4.5	-	140	48	189
77-78	1.5	5.0	-	299	43	342
78-79	2.0	5.5	-	205	21	226
79-80	2.5	6.0	-	130	6	135
80-81	3.0	7.0	-	79	-	80
81-82	3.5	8.0	-	62	-	62
82-83	4.0	9.0	-	39	-	39
83-84	4.5	10.0	-	29	-	29
84-85	5.5	11.0	-	26	-	26
85-86	6.0	12.0	-	10	-	10
86-87	7.0	13.5	-	7	-	7
87-88	7.5	15.0	-	5	-	5
88-89	8.5	16.5	-	2	-	2
89-90	9.5	18.0	-	-	-	-
90-91	10.5	19.5	-	-	-	-
91-92	11.5	21.0	-	-	-	-

Notes:

- <sup>1</sup> NIPTS values rounded to nearest 0.5 dB.
- <sup>2</sup> This analysis assumes the population is outdoors and exposed to all aircraft noise events for 40 years. Given the amount of time spent indoors and the intermittent occurrence of aircraft noise events, it is highly unlikely that individuals would meet all the criteria, and the actual potential for hearing loss would be less than the values reported here.
- <sup>3</sup> Estimated Population was determined by those living within the 80 dB DNL noise contour around each airfield, including those living on-base at Ault Field (there is no on-base population at OLF Coupeville).
- <sup>4</sup> Population counts of people within the DNL contours were computed using 2010 census block-level data. The percent area of the census block covered by the DNL contour range was applied to the population of that census block to estimate the population within the DNL contour range (e.g., if 25 percent of the census block is within a DNL contour, then 25 percent of the population is included in the population count). This calculation assumes an even distribution of the population across the census block. All population estimates for areas under the dB DNL contours utilized 2010 U.S. Census Bureau data. A 7.1-percent growth factor was applied to the 2010 census statistics to account for population changes between 2010 and 2020 based on medium forecasted population projections for Island County during that period (Washington State Office of Financial Management, 2017). In addition, per guidance on potential hearing loss, on-base populations at Ault Field have been included in the analysis. These data should be used for comparative purposes only and are not considered actual numbers within the DNL contour range.

Key:

- dB = decibel
- Leq(24) = 24-hour Equivalent Sound Level
- NIPTS = Noise Induced Permanent Threshold Shift
- OLF = outlying landing field

**Table A7.1-4 Average Indoor Nightly Probability of Awakening at Applicable POIs for the High-Tempo FCLP Year Baseline Scenario**

Representative Residential Receptor				Annual Average Nightly (2200-0700) Probability of Awakening (%) <sup>(1)</sup>	
Type	ID	Description	Related Field	Baseline	
				Windows Open	Windows Closed
Residential <sup>(2)</sup>	R01	Sullivan Rd	Ault	62%	46%
	R02	Salal St. and N. Northgate Dr	Ault	44%	31%
	R03	Central Whidbey	Ault	17%	9%
	R04	Pull and Be Damned Point	Ault	20%	9%
	R05	Snee-Oosh Point	Ault	16%	5%
	R06	Admirals Dr and Byrd Dr	OLF	10%	6%
	R07	Race Lagoon	OLF	5%	2%
	R08	Pratts Bluff	OLF	5%	3%
	R09	Cox Rd and Island Ridge Way	OLF	3%	2%
	R10	Skyline	None	7%	2%
	R11	Sequim	None	0%	0%
	R12	Port Angeles	None	0%	0%
	R13	Beverly Beach, Freeland	OLF	2%	0%
	R14	E Sleeper Rd & Slumber Ln	Ault	40%	28%
	R15	Long Point Manor	OLF	12%	4%
	R16	Rocky Point Heights	OLF	10%	3%
	R17	Port Townsend	None	1%	0%
	R18	Marrowstone Island (Nordland)	None	0%	0%
	R19	Island Transit Offices, Coupeville	OLF	10%	5%
	R20	South Lopez Island (Agate Beach)	None	2%	1%
School (near residential)	S01	Oak Harbor High School	Ault	22%	13%
	S02	Crescent Harbor Elementary School	Ault	23%	14%
	S03	Coupeville Elementary School	OLF	6%	3%
	S04	Anacortes High School	Ault	2%	1%
	S05	Lopez Island School	None	0%	0%
	S06	Friday Harbor Elementary School	None	0%	0%
	S07	Sir James Douglas Elementary School	None	0%	0%
	S08	Fidalgo Elementary School	Ault	7%	2%
	S09	La Conner Elementary School	Ault	8%	3%
	S10	Elger Bay Elementary School	OLF	0%	0%

**Table A7.1-5 Indoor Speech Interference for the High-Tempo FCLP Year Baseline Scenario**

Point of Interest				Annual Average Daily Indoor Daytime (0700-2200) Events per Hour <sup>(1)</sup>	
				Baseline	
Type	ID	Description	Related Field	Windows Open	Windows Closed
Residential	R01	Sullivan Rd	Ault	10	10
	R02	Salal St. and N. Northgate Dr	Ault	10	8
	R03	Central Whidbey	Ault	5	-
	R04	Pull and Be Damned Point	Ault	2	1
	R05	Snee-Oosh Point	Ault	2	1
	R06	Admirals Dr and Byrd Dr	OLF	-	-
	R07	Race Lagoon	OLF	1	-
	R08	Pratts Bluff	OLF	-	-
	R09	Cox Rd and Island Ridge Way	OLF	-	-
	R10	Skyline	None	1	-
	R11	Sequim	None	-	-
	R12	Port Angeles	None	-	-
	R13	Beverly Beach, Freeland	OLF	-	-
	R14	E Sleeper Rd & Slumber Ln	Ault	8	7
	R15	Long Point Manor	OLF	1	1
	R16	Rocky Point Heights	OLF	2	1
	R17	Port Townsend	None	-	-
	R18	Marrowstone Island (Nordland)	None	-	-
	R19	Island Transit Offices, Coupeville	OLF	1	1
	R20	South Lopez Island (Agate Beach)	None	-	-
School (near residential)	S01	Oak Harbor High School	Ault	6	2
	S02	Crescent Harbor Elementary School	Ault	5	2
	S03	Coupeville Elementary School	OLF	1	-
	S04	Anacortes High School	Ault	-	-
	S05	Lopez Island School	None	-	-
	S06	Friday Harbor Elementary School	None	-	-
	S07	Sir James Douglas Elementary School	None	-	-
	S08	Fidalgo Elementary School	Ault	-	-
	S09	La Conner Elementary School	Ault	1	-
	S10	Elger Bay Elementary School	OLF	-	-

**Table A7.1-6 Classroom Learning Interference for the High-Tempo FCLP Year Baseline Scenario**

Representative School Location				Baseline				
Type	ID	Description	Related Field	Outdoor $L_{eq(8h)}$ (dB)	Indoor <sup>(1)</sup>			
					$L_{eq(8h)}$ (dB)	Events per Hour <sup>(2)</sup>	$L_{eq(8h)}$ (dB)	Events per Hour <sup>(2)</sup>
School Surrogate	R03	Central Whidbey	Ault	57	<45	5	<45	-
	R11	Sequim	None	<45	<45	-	<45	-
School	S01	Oak Harbor High School	Ault	58	<45	6	<45	2
	S02	Crescent Harbor Elementary School	Ault	68	53	5	<45	2
	S03	Coupeville Elementary School	OLF	52	<45	1	<45	-
	S04	Anacortes High School	Ault	47	<45	-	<45	-
	S05	Lopez Island School	None	<45	<45	-	<45	-
	S06	Friday Harbor Elementary School	None	<45	<45	-	<45	-
	S07	Sir James Douglas Elementary School	None	<45	<45	-	<45	-
	S08	Fidalgo Elementary School	Ault	49	<45	-	<45	-
	S09	La Conner Elementary School	Ault	51	<45	1	<45	-
	S10	Elger Bay Elementary School	OLF	<45	<45	-	<45	-
Number of Sites Exceeding 1 Intrusive Event per Hour						3		2
Minimum Number of Intrusive Events per Hour if Exceeding 1						5		2
Maximum Number of Intrusive Events per Hour if Exceeding 1						6		2

Notes:

(1) assumes 15 dB and 25 dB of Noise Level Reductions for windows open and closed, respectively.

(2) Number of Average School-Day Events per hour during 8-hour school day (0800-1600) At or Above an Indoor Maximum (single-event) Sound Level ( $L_{max}$ ) of 50 dB;

**Table A7.1-7 Recreational Speech Interference for the High-Tempo FCLP Year Baseline Scenario**

Representative Park Receptor				Annual Average Outdoor Daily Daytime Events per Hour NA50 L <sub>max</sub>	
Type	ID	Description	Related Field	Daytime	Nighttime
Park	P01	Joseph Whidbey State Park	Ault	9	2
	P02	Deception Pass State Park	Ault	9	2
	P03	Dugualla State Park	Ault	9	2
	P04	Baseball Field (Ebey's Landing National Historical Reserve)	OLF	3	1
	P05	Ebey's Landing State Park	OLF	2	-
	P06	Fort Casey State Park	OLF	1	-
	P07	Cama Beach State Park	OLF	3	-
	P08	Port Townsend	None	1	-
	P09	Moran State Park	None	-	-
	P10	San Juan Islands National Monument	None	8	2
	P11	San Juan Island Visitors Center	None	-	-
	P12	Cap Sante Park	Ault	1	-
	P13	Lake Campbell	Ault	5	1
	P14	Spencer Spit State Park	None	-	-
	P15	Pioneer Park	Ault	4	1
	P16	Marrowstone Island (Fort Flagler)	OLF	-	-
	EBLA001	Reuble Farm	OLF	2	-
EBLA002	Ferry House	OLF	2	-	
Residential	R01	Sullivan Rd	Ault	10	2
	R02	Salal St. and N. Northgate Dr	Ault	10	2
	R03	Central Whidbey	Ault	8	2
	R04	Pull and Be Damned Point	Ault	8	2
	R05	Snee-Oosh Point	Ault	7	2
	R06	Admirals Dr and Byrd Dr	OLF	1	-
	R07	Race Lagoon	OLF	3	1
	R08	Pratts Bluff	OLF	1	-
	R09	Cox Rd and Island Ridge Way	OLF	1	-
	R10	Skyline	None	4	1
	R11	Sequim	None	1	-
	R12	Port Angeles	None	1	-
	R13	Beverly Beach, Freeland	OLF	-	-
	R14	E Sleeper Rd & Slumber Ln	Ault	10	2
	R15	Long Point Manor	OLF	7	2
	R16	Rocky Point Heights	OLF	5	1
	R17	Port Townsend	None	-	-
	R18	Marrowstone Island (Nordland)	None	-	-
	R19	Island Transit Offices, Coupeville	OLF	3	1
	R20	South Lopez Island (Agate Beach)	None	4	1
School	S01	Oak Harbor High School	Ault	9	2
	S02	Crescent Harbor Elementary School	Ault	8	2
	S03	Coupeville Elementary School	OLF	3	1
	S04	Anacortes High School	Ault	1	-
	S05	Lopez Island School	None	-	-
	S06	Friday Harbor Elementary School	None	-	-
	S07	Sir James Douglas Elementary School	None	-	-
	S08	Fidalgo Elementary School	Ault	4	1
	S09	La Conner Elementary School	Ault	3	1
	S10	Elger Bay Elementary School	OLF	1	-

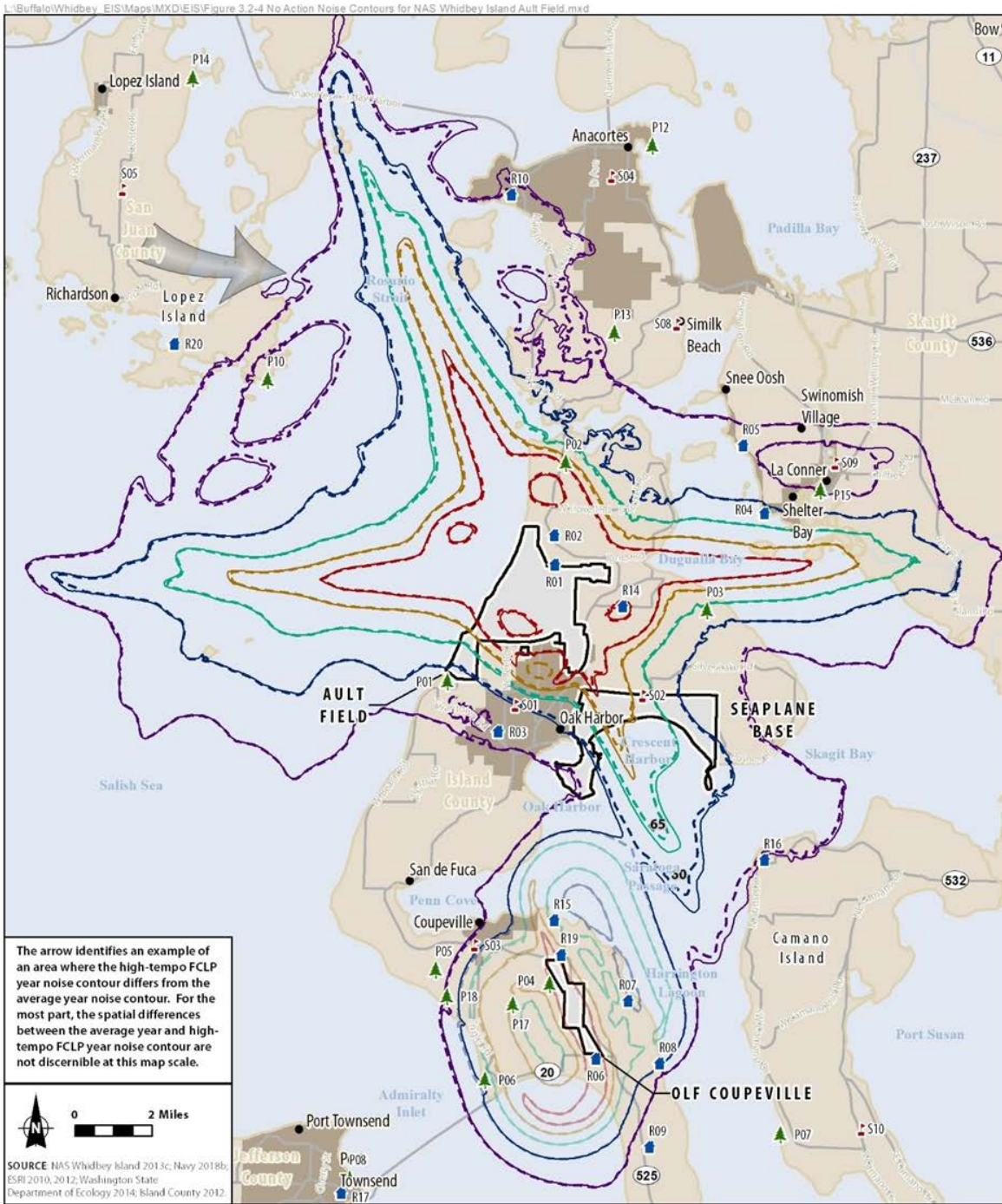


Figure A7.2-1 DNL Contours for AAD Aircraft Events for the Average Year and High-Tempo FCLP Year No Action Alternative

**Table A7.2-1 Estimated Acreage and Population within the DNL Contour Ranges<sup>1</sup> for the High-Tempo FCLP Year No Action Alternative at the NAS Whidbey Island Complex**

<i>DNL Contours</i>	<i>DNL Contour Ranges</i>							
	<i>65 to &lt;70 dB DNL</i>		<i>70 to &lt;75 dB DNL</i>		<i>Greater than or equal to 75 dB DNL</i>		<i>Total<sup>3</sup></i>	
	<i>Area (acres)</i>	<i>Pop<sup>2</sup></i>	<i>Area (acres)</i>	<i>Pop<sup>2</sup></i>	<i>Area (acres)</i>	<i>Pop<sup>2</sup></i>	<i>Area (acres)</i>	<i>Pop<sup>2</sup></i>
Ault Field	3,503	3,347	3,260	2,677	5,864	3,530	<b>12,628</b>	<b>9,554</b>
OLF Coupeville	3,718	881	3,054	786	637	583	<b>7,409</b>	<b>2,250</b>
<b>Total<sup>3</sup></b>	<b>7,221</b>	<b>4,228</b>	<b>6,315</b>	<b>3,463</b>	<b>6,502</b>	<b>4,113</b>	<b>20,037</b>	<b>11,804</b>

Notes:

- <sup>1</sup> Acreage presented does not include areas over water or areas over the NAS Whidbey Island complex.
- <sup>2</sup> Population counts of people within the DNL contours were computed using 2010 census block-level data. The percent area of the census block covered by the DNL contour range was applied to the population of that census block to estimate the population within the DNL contour range (e.g., if 25 percent of the census block is within a DNL contour, then 25 percent of the population is included in the population count). This calculation assumes an even distribution of the population across the census block, and it excludes population on military properties within the DNL contours (NAS Whidbey Island [Ault Field], the Seaplane Base, and OLF Coupeville). All population estimates for areas under the dB DNL contours utilized 2010 U.S. Census Bureau data. A 7.1-percent growth factor was applied to the 2010 census statistics to account for population changes between 2010 and 2020 based on medium forecasted population projections for Island County during that period (Washington State Office of Financial Management, 2017). To simplify the analysis, this growth factor was also used for areas of Skagit County that fall under the 65+ dB DNL contours. These data should be used for comparative purposes only and are not considered actual numbers within the DNL contour range.
- <sup>3</sup> Numbers have been rounded to ensure totals sum.

Key:

dB = decibel

DNL = day-night average sound level



**Table A7.2-2 Estimated Aircraft DNL at POIs for the High-Tempo FCLP Year No Action Alternative**

		Point of Interest		DNL (dB)	
Type	ID	Description	Related Field	No Action	Increase re Baseline
Park	P01	Joseph Whidbey State Park	Ault	57	-
	P02	Deception Pass State Park	Ault	74	-
	P03	Dugualla State Park	Ault	65	-
	P04	Baseball Field (Ebey's Landing National Historical Reserve)	OLF	74	-
	P05	Ebey's Landing State Park	OLF	52	-
	P06	Fort Casey State Park	OLF	61	-1
	P07	Cama Beach State Park	OLF	<45	-
	P08	Port Townsend	None	<45	-
	P09	Moran State Park	None	<45	-
	P10	San Juan Islands National Monument	None	54	-
	P11	San Juan Island Visitors Center	None	<45	-
	P12	Cap Sante Park	Ault	<45	-
	P13	Lake Campbell	Ault	54	-
	P14	Spencer Spit State Park	None	<45	-
	P15	Pioneer Park	Ault	55	-
	P16	Marrowstone Island (Fort Flagler)	OLF	<45	-
BLA00	Reuble Farm	OLF	69	-	
	Ferry House	OLF	56	-	
Residential	R01	Sullivan Rd	Ault	90	-
	R02	Salal St. and N. Northgate Dr	Ault	78	-
	R03	Central Whidbey	Ault	57	-
	R04	Pull and Be Damned Point	Ault	62	-
	R05	Snee-Oosh Point	Ault	57	-
	R06	Admirals Dr and Byrd Dr	OLF	79	-
	R07	Race Lagoon	OLF	61	-
	R08	Pratts Bluff	OLF	62	-1
	R09	Cox Rd and Island Ridge Way	OLF	50	-
	R10	Skyline	None	56	-1
	R11	Sequim	None	<45	-
	R12	Port Angeles	None	<45	-
	R13	Beverly Beach, Freeland	OLF	<45	-
R14	E Sleeper Rd & Slumber Ln	Ault	74	-1	
R15	Long Point Manor	OLF	64	-1	
R16	Rocky Point Heights	OLF	55	-	
R17	Port Townsend	None	<45	-	
R18	Marrowstone Island (Nordland)	None	<45	-	
R19	Island Transit Offices, Coupeville	OLF	73	-	
R20	South Lopez Island (Agate Beach)	None	48	-	
School	S01	Oak Harbor High School	Ault	60	-
	S02	Crescent Harbor Elementary School	Ault	68	-
	S03	Coupeville Elementary School	OLF	58	-
	S04	Anacortes High School	Ault	48	-
	S05	Lopez Island School	None	<45	-
	S06	Friday Harbor Elementary School	None	<45	-
	S07	Sir James Douglas Elementary School	None	<45	-
	S08	Fidalgo Elementary School	Ault	52	-
	S09	La Conner Elementary School	Ault	53	-
	S10	Elger Bay Elementary School	OLF	<45	-

**Table A7.2-3 Average and 10th Percentile Noise Induced Permanent Threshold Shifts as a Function of Equivalent Sound Level at the NAS Whidbey Island Complex for Max Year No Action Alternative**

Band of Leq(24) (dB)	Average NIPTS (dB) <sup>1</sup>	10th Percentile NIPTS (dB) <sup>1</sup>	Estimated Population <sup>2, 3, 4</sup>			Total
			Ault Field (on-station)	Ault Field (off-station)	OLF Coupeville (off-station)	
74-75	0.5	3.5	-	-	-	-
75-76	1.0	4.0	-	-	32	32
76-77	1.0	4.5	-	155	46	201
77-78	1.5	5.0	-	277	46	322
78-79	2.0	5.5	-	169	24	193
79-80	2.5	6.0	-	102	7	109
80-81	3.0	7.0	-	75	1	77
81-82	3.5	8.0	-	51	-	51
82-83	4.0	9.0	-	38	-	38
83-84	4.5	10.0	-	36	-	36
84-85	5.5	11.0	-	12	-	12
85-86	6.0	12.0	-	9	-	9
86-87	7.0	13.5	-	7	-	7
87-88	7.5	15.0	-	4	-	4
88-89	8.5	16.5	-	2	-	2
89-90	9.5	18.0	-	-	-	-
90-91	10.5	19.5	-	-	-	-
91-92	11.5	21.0	-	-	-	-

Notes:

- <sup>1</sup> NIPTS values rounded to nearest 0.5 dB.
- <sup>2</sup> This analysis assumes the population is outdoors and exposed to all aircraft noise events for 40 years. Given the amount of time spent indoors and the intermittent occurrence of aircraft noise events, it is highly unlikely that individuals would meet all the criteria, and the actual potential for hearing loss would be less than the values reported here.
- <sup>3</sup> Estimated Population was determined by those living within the 80 dB DNL noise contour around each airfield, including those living on-base at Ault Field (there is no on-base population at OLF Coupeville).
- <sup>4</sup> Population counts of people within the DNL contours were computed using 2010 census block-level data. The percent area of the census block covered by the DNL contour range was applied to the population of that census block to estimate the population within the DNL contour range (e.g., if 25 percent of the census block is within a DNL contour, then 25 percent of the population is included in the population count). This calculation assumes an even distribution of the population across the census block. All population estimates for areas under the dB DNL contours utilized 2010 U.S. Census Bureau data. A 7.1-percent growth factor was applied to the 2010 census statistics to account for population changes between 2010 and 2020 based on medium forecasted population projections for Island County during that period (Washington State Office of Financial Management, 2017). In addition, per guidance on potential hearing loss, on-base populations at Ault Field have been included in the analysis. These data should be used for comparative purposes only and are not considered actual numbers within the DNL contour range.

Key:

- dB = decibel
- Leq(24) = 24-hour Equivalent Sound Level
- NIPTS = Noise Induced Permanent Threshold Shift
- OLF = outlying landing field

**Table A7.2-4 Average Indoor Nightly Probability of Awakening at Applicable POIs for the High-Tempo FCLP Year No Action Alternative**

Representative Residential Receptor				Annual Average Nightly (2200-0700) Probability of Awakening (%) <sup>(1)</sup>			
Type	ID	Description	Related Field	No Action		Change from Baseline	
				Windows Open	Windows Closed	Windows Open	Windows Closed
Residential	R01	Sullivan Rd	Ault	62%	46%	-	-
	R02	Salal St. and N. Northgate Dr	Ault	44%	31%	-	-
	R03	Central Whidbey	Ault	17%	9%	-	-
	R04	Pull and Be Damned Point	Ault	21%	9%	1%	-
	R05	Snee-Oosh Point	Ault	16%	5%	-	-
	R06	Admirals Dr and Byrd Dr	OLF	9%	6%	-1%	-
	R07	Race Lagoon	OLF	5%	2%	-	-
	R08	Pratts Bluff	OLF	4%	2%	-1%	-1%
	R09	Cox Rd and Island Ridge Way	OLF	3%	2%	-	-
	R10	Skyline	None	6%	2%	-1%	-
	R11	Sequim	None	0%	0%	-	-
	R12	Port Angeles	None	0%	0%	-	-
	R13	Beverly Beach, Freeland	OLF	2%	0%	-	-
	R14	E Sleeper Rd & Slumber Ln	Ault	40%	28%	-	-
	R15	Long Point Manor	OLF	11%	4%	-1%	-
	R16	Rocky Point Heights	OLF	10%	3%	-	-
	R17	Port Townsend	None	1%	0%	-	-
	R18	Marrowstone Island (Nordland)	None	0%	0%	-	-
	R19	Island Transit Offices, Coupeville	OLF	10%	5%	-	-
	R20	South Lopez Island (Agate Beach)	None	3%	1%	1%	-
School (near residential)	S01	Oak Harbor High School	Ault	22%	13%	-	-
	S02	Crescent Harbor Elementary School	Ault	23%	13%	-	-1%
	S03	Coupeville Elementary School	OLF	5%	3%	-1%	-
	S04	Anacortes High School	Ault	2%	1%	-	-
	S05	Lopez Island School	None	0%	0%	-	-
	S06	Friday Harbor Elementary School	None	0%	0%	-	-
	S07	Sir James Douglas Elementary School	None	0%	0%	-	-
	S08	Fidalgo Elementary School	Ault	7%	2%	-	-
	S09	La Conner Elementary School	Ault	8%	3%	-	-
	S10	Elger Bay Elementary School	OLF	0%	0%	-	-

(1) assumes 15 dB and 25 dB of Noise Level Reductions for windows open and closed, respectively.

(2) R01 and R06 include interior SELs greater than 100 dB with windows open

**Table A7.2-5 Indoor Speech Interference for the High-Tempo FCLP Year No Action Alternative**

**Indoor Speech Interference for Max Year No Action**

Point of Interest				Annual Average Daily Indoor Daytime (0700-2200) Events per Hour <sup>(1)</sup>			
				No Action		Change from Baseline	
Type	ID	Description	Related Field	Windows Open	Windows Closed	Windows Open	Windows Closed
Residential	R01	Sullivan Rd	Ault	8	8	-2	-2
	R02	Salal St. and N. Northgate Dr	Ault	8	8	-2	-
	R03	Central Whidbey	Ault	5	-	-	-
	R04	Pull and Be Damned Point	Ault	2	1	-	-
	R05	Snee-Oosh Point	Ault	2	1	-	-
	R06	Admirals Dr and Byrd Dr	OLF	-	-	-	-
	R07	Race Lagoon	OLF	1	-	-	-
	R08	Pratts Bluff	OLF	-	-	-	-
	R09	Cox Rd and Island Ridge Way	OLF	-	-	-	-
	R10	Skyline	None	-	-	-1	-
	R11	Sequim	None	-	-	-	-
	R12	Port Angeles	None	-	-	-	-
	R13	Beverly Beach, Freeland	OLF	-	-	-	-
	R14	E Sleeper Rd & Slumber Ln	Ault	8	7	-	-
	R15	Long Point Manor	OLF	1	1	-	-
	R16	Rocky Point Heights	OLF	2	1	-	-
	R17	Port Townsend	None	-	-	-	-
	R18	Marrowstone Island (Nordland)	None	-	-	-	-
	R19	Island Transit Offices, Coupeville	OLF	1	1	-	-
	R20	South Lopez Island (Agate Beach)	None	-	-	-	-
School	S01	Oak Harbor High School	Ault	6	2	-	-
	S02	Crescent Harbor Elementary School	Ault	5	2	-	-
	S03	Coupeville Elementary School	OLF	1	-	-	-
	S04	Anacortes High School	Ault	-	-	-	-
	S05	Lopez Island School	None	-	-	-	-
	S06	Friday Harbor Elementary School	None	-	-	-	-
	S07	Sir James Douglas Elementary School	None	-	-	-	-
	S08	Fidalgo Elementary School	Ault	-	-	-	-
	S09	La Conner Elementary School	Ault	1	-	-	-
	S10	Elger Bay Elementary School	OLF	-	-	-	-

(1) with an indoor Maximum Sound Level of at Least 50 dB; assumes 15 dB and 25 dB of Noise Level Reductions for windows open and closed, respectively.

(2) The Whidbey General Hospital is located within approximately 1,000 feet of the Coupeville Elementary School; therefore, this location was not modeled individually, but similar result for indoor speech interference for POI S03 would apply.

**Table A7.2-6 Classroom Learning Interference for the High-Tempo FCLP Year No Action Alternative**

Representative School Location			No Action					Change from Baseline				
			Outdoor	Indoor <sup>(1)</sup>				Outdoor	Indoor <sup>(1)</sup>			
				Windows Open		Windows Closed			Windows Open		Windows Closed	
Type	ID	Description	L <sub>eq(8h)</sub> (dB)	L <sub>eq(8h)</sub> (dB)	Events per Hour <sup>(2)</sup>	L <sub>eq(8h)</sub> (dB)	Events per Hour <sup>(2)</sup>	L <sub>eq(8h)</sub> (dB)	Events per Hour <sup>(2)</sup>	L <sub>eq(8h)</sub> (dB)	Events per Hour <sup>(2)</sup>	
School Surrogate	R03	Central Whidbey	57	<45	4	<45	-	-	-1	-	-	
	R11	Sequim	<45	<45	-	<45	-	-	-	-	-	
School	S01	Oak Harbor High School	57	<45	5	<45	2	-1	-1	-1	-1	
	S02	Crescent Harbor Elementary School	67	52	4	<45	2	-1	-1	-1	-	
	S03	Coupeville Elementary School	52	<45	-	<45	-	-	-1	-	-	
	S04	Anacortes High School	46	<45	-	<45	-	-1	-1	-	-1	
	S05	Lopez Island School	<45	<45	-	<45	-	-1	-1	-	-1	
	S06	Friday Harbor Elementary School	<45	<45	-	<45	-	-	-	-	-	
	S07	Sir James Douglas Elementary School	<45	<45	-	<45	-	-	-	-	-	
	S08	Fidalgo Elementary School	49	<45	-	<45	-	-	-	-	-	
	S09	La Conner Elementary School	50	<45	1	<45	-	-1	-1	-	-1	
	S10	Elger Bay Elementary School	<45	<45	-	<45	-	-	-	-	-	
Number of Sites Exceeding 1 Intrusive Event per Hour					3		2			-		
Minimum Number of Intrusive Events per Hour if Exceeding 1					4		2			-		
Maximum Number of Intrusive Events per Hour if Exceeding 1					5		2			-		

Notes:

(1) assumes 15 dB and 25 dB of Noise Level Reductions for windows open and closed, respectively.

(2) Number of Average School-Day Events per hour during 8-hour school day (0800-1600) At or Above an Indoor Maximum (single-event) Sound Level (L<sub>max</sub>) of 50 dB;

**Table A7.2-7 Recreational Speech Interference for the High-Tempo FCLP Year No Action Alternative**

Representative Park Receptor			Annual Average Outdoor Daily Daytime Events per Hour NA50 L <sub>max</sub>			
			No Action		Increase re No Action	
Type	ID	Description	Daytime	Nighttime	Daytime	Daytime
Park	P01	Joseph Whidbey State Park	8	2	-1	-
	P02	Deception Pass State Park	8	2	-1	-
	P03	Dugualla State Park	8	2	-1	-
	P04	Baseball Field (Ebey's Landing National Historical Reserve)	3	1	-	-
	P05	Ebey's Landing State Park	2		-	-
	P06	Fort Casey State Park	1		-	-
	P07	Cama Beach State Park	3		-	-
	P08	Port Townsend	1		-	-
	P09	Moran State Park			-	-
	P10	San Juan Islands National Monument	7	2	-1	-
	P11	San Juan Island Visitors Center			-	-
	P12	Cap Sante Park			-1	-
	P13	Lake Campbell	4	1	-1	-
	P14	Spencer Spit State Park			-	-
	P15	Pioneer Park	4	1	-	-
	P16	Marrowstone Island (Fort Flagler)			-	-
	EBLA001	Reuble Farm	2		-	-
	EBLA002	Ferry House	2		-	-
Residential	R01	Sullivan Rd	8	2	-2	-
	R02	Salal St. and N. Northgate Dr	8	2	-2	-
	R03	Central Whidbey	7	2	-1	-
	R04	Pull and Be Damned Point	7	2	-1	-
	R05	Snee-Oosh Point	7	2	-	-
	R06	Admirals Dr and Byrd Dr	1		-	-
	R07	Race Lagoon	3	1	-	-
	R08	Pratts Bluff	1		-	-
	R09	Cox Rd and Island Ridge Way	1		-	-
	R10	Skyline	4	1	-	-
	R11	Sequim			-1	-
	R12	Port Angeles	1		-	-
	R13	Beverly Beach, Freeland			-	-
	R14	E Sleeper Rd & Slumber Ln	8	2	-2	-
	R15	Long Point Manor	7	2	-	-
	R16	Rocky Point Heights	4	1	-1	-
	R17	Port Townsend	1		1	-
	R18	Marrowstone Island (Nordland)			-	-
R19	Island Transit Offices, Coupeville	3	1	-	-	
R20	South Lopez Island (Agate Beach)	3	1	-1	-	
School	S01	Oak Harbor High School	8	2	-1	-
	S02	Crescent Harbor Elementary School	7	2	-1	-
	S03	Coupeville Elementary School	3	1	-	-
	S04	Anacortes High School	1		-	-
	S05	Lopez Island School			-	-
	S06	Friday Harbor Elementary School			-	-
	S07	Sir James Douglas Elementary School			-	-
	S08	Fidalgo Elementary School	4	1	-	-
	S09	La Conner Elementary School	3	1	-	-
	S10	Elger Bay Elementary School	1		-	-

**Table A7.3-1 Estimated Acreage and Population within the DNL Contour Ranges<sup>1</sup> for the NAS Whidbey Island Complex, Alternative 1 (High-Tempo FCLP Year)<sup>2,3</sup>**

	<i>DNL Contour Ranges</i>							
	<i>65 to &lt;70 dB DNL</i>		<i>70 to &lt;75 dB DNL</i>		<i>Greater than or equal to 75 dB DNL</i>		<i>Total</i>	
	<i>Area (acres)</i>	<i>Pop<sup>4</sup></i>	<i>Area (acres)</i>	<i>Pop<sup>4</sup></i>	<i>Area (acres)</i>	<i>Pop<sup>4</sup></i>	<i>Area (acres)</i>	<i>Pop<sup>4</sup></i>
<b><i>Ault Field</i></b>								
<b><i>No Action Alternative</i></b>								
High-Tempo FCLP Year	3,503	3,347	3,260	2,677	5,864	3,530	12,628	9,554
<b><i>Alternative 1</i></b>								
Scenario A (20/80 FCLP split)	4,065 (+562)	3,690 (+343)	3,278 (+18)	1,973 (-704)	6,004 (+140)	3,548 (+18)	13,346 (+718)	9,212 (-342)
Scenario B (50/50 FCLP split)	3,974 (+471)	3,667 (+320)	3,273 (+13)	2,503 (-174)	6,528 (+664)	3,828 (+298)	13,775 (+1,147)	9,997 (+443)
Scenario C (80/20 FCLP split)	3,998 (+495)	3,853 (+506)	3,115 (-145)	2,566 (-111)	7,009 (+1,145)	4,064 (+534)	14,122 (+1,494)	10,483 (+929)
Scenario D (30/70 FCLP split)	3,997 (+494)	3,735 (+388)	3,203 (-57)	2,228 (-449)	6,312 (+448)	3,714 (+184)	13,513 (+885)	9,677 (+123)
Scenario E (70/30 FCLP split)	3,985 (+482)	3,791 (+444)	3,135 (-125)	2,564 (-113)	6,898 (+1,034)	3,990 (+460)	14,019 (+1,391)	10,327 (+773)
<b><i>OLF Coupeville</i></b>								
<b><i>No Action Alternative</i></b>								
High-Tempo FCLP Year	3,718	881	3,054	786	637	583	7,409	2,250
<b><i>Alternative 1</i></b>								
Scenario A (20/80 FCLP split)	1,897 (-1,821)	612 (-269)	3,064 (+10)	871 (+150)	5,707 (+5,070)	2,053 (+1,470)	10,354 (+2,945)	3,536 (+1,286)
Scenario B (50/50 FCLP split)	1,897 (-1,821)	492 (-389)	3,467 (+413)	1,085 (+275)	4,215 (+3,578)	1,592 (+1,009)	9,579 (+2,170)	3,169 (+919)
Scenario C (80/20 FCLP split)	3,454 (-264)	1,040 (+159)	3,183 (+129)	1,038 (+250)	1,497 (+860)	700 (+117)	8,134 (+725)	2,778 (+528)
Scenario D (30/70 FCLP split)	1,556 (-2,162)	556 (-325)	3,265 (+211)	943 (+206)	5,341 (+4,704)	1,946 (+1,363)	10,162 (+2,753)	3,445 (+1,195)
Scenario E (70/30 FCLP split)	2,996 (-722)	849 (-32)	3,195 (+141)	1,047 (+272)	2,615 (+1,978)	1,039 (+456)	8,606 (+1,197)	5,029 (+2,779)
<b><i>NAS Whidbey Island Complex</i></b>								
<b><i>No Action Alternative</i></b>								
High-Tempo FCLP Year	7,221	4,228	6,315	3,463	6,502	4,113	20,037	11,804
<b><i>Alternative 1</i></b>								
Scenario A (20/80 FCLP split)	5,647 (-1,574)	4,303 (+75)	6,342 (+27)	2,844 (-619)	11,711 (+5,209)	5,602 (+1,489)	23,700 (+3,663)	12,749 (+945)
Scenario B (50/50 FCLP split)	5,872 (-1,349)	4,159 (-69)	6,740 (+425)	3,587 (+125)	10,742 (+4,240)	5,420 (+1,307)	23,354 (+3,317)	13,166 (+1,362)
Scenario C (80/20 FCLP split)	7,452 (+231)	4,893 (+665)	6,298 (-17)	3,604 (+141)	8,506 (+2,004)	4,764 (+651)	22,256 (+2,219)	13,261 (+1,457)
Scenario D (30/70 FCLP split)	5,554 (-1,667)	4,291 (+63)	6,468 (+153)	3,171 (-292)	11,653 (+5,151)	5,660 (+1,547)	23,675 (+3,638)	13,122 (+1,318)

**Table A7.3-1 Estimated Acreage and Population within the DNL Contour Ranges<sup>1</sup> for the NAS Whidbey Island Complex, Alternative 1 (High-Tempo FCLP Year)<sup>2,3</sup>**

	<i>DNL Contour Ranges</i>							
	<i>65 to &lt;70 dB DNL</i>		<i>70 to &lt;75 dB DNL</i>		<i>Greater than or equal to 75 dB DNL</i>		<i>Total</i>	
	<i>Area (acres)</i>	<i>Pop<sup>4</sup></i>	<i>Area (acres)</i>	<i>Pop<sup>4</sup></i>	<i>Area (acres)</i>	<i>Pop<sup>4</sup></i>	<i>Area (acres)</i>	<i>Pop<sup>4</sup></i>
Scenario E (70/30 FCLP split)	6,981 (-240)	4,640 (+412)	6,330 (+15)	3,593 (+130)	9,514 (+3,012)	5,029 (+916)	22,825 (+2,788)	13,262 (+1,458)

Notes:

- <sup>1</sup> All five scenarios are outlined in Section 2.3.3, where the split represents the percent of FCLPs conducted at Ault Field and OLF Coupeville, respectively (i.e., 20/80 FCLP split = 20 percent of FCLPs at Ault Field and 80 percent of FCLPs at OLF Coupeville).
- <sup>2</sup> Acreage presented does not include areas over water or areas over the NAS Whidbey Island complex.
- <sup>3</sup> The difference between the No Action Alternative and Alternative 1 is noted in parentheses.
- <sup>4</sup> Population counts of people within the DNL contour ranges were computed using 2010 Census block-level data. The percent area of the census block covered by the DNL contour range was applied to the population of that census block to estimate the population within the DNL contour range (e.g., if 25 percent of the census block is within a DNL contour range, then 25 percent of the population is included in the population count). This calculation assumes an even distribution of the population across the census block, and it excludes population on military properties within the DNL contour ranges (NAS Whidbey Island [Ault Field], the Seaplane Base, and OLF Coupeville). All population estimates for areas within the dB DNL contours utilized 2010 U.S. Census Bureau data. A 7.1-percent growth factor was applied to the 2010 census statistics to account for population changes between 2010 and 2020 based on medium forecasted population projections for Island County during that period (Washington State Office of Financial Management, 2017). To simplify the analysis, this growth factor was also used for areas of Skagit County that fall within the 65+ dB DNL contours. These data should be used for comparative purposes only and are not considered actual numbers within the DNL contour range.
- <sup>5</sup> Numbers have been rounded to ensure totals sum.

Key:

- dB = decibel
- DNL = day-night average sound level
- FCLP = Field Carrier Landing Practice



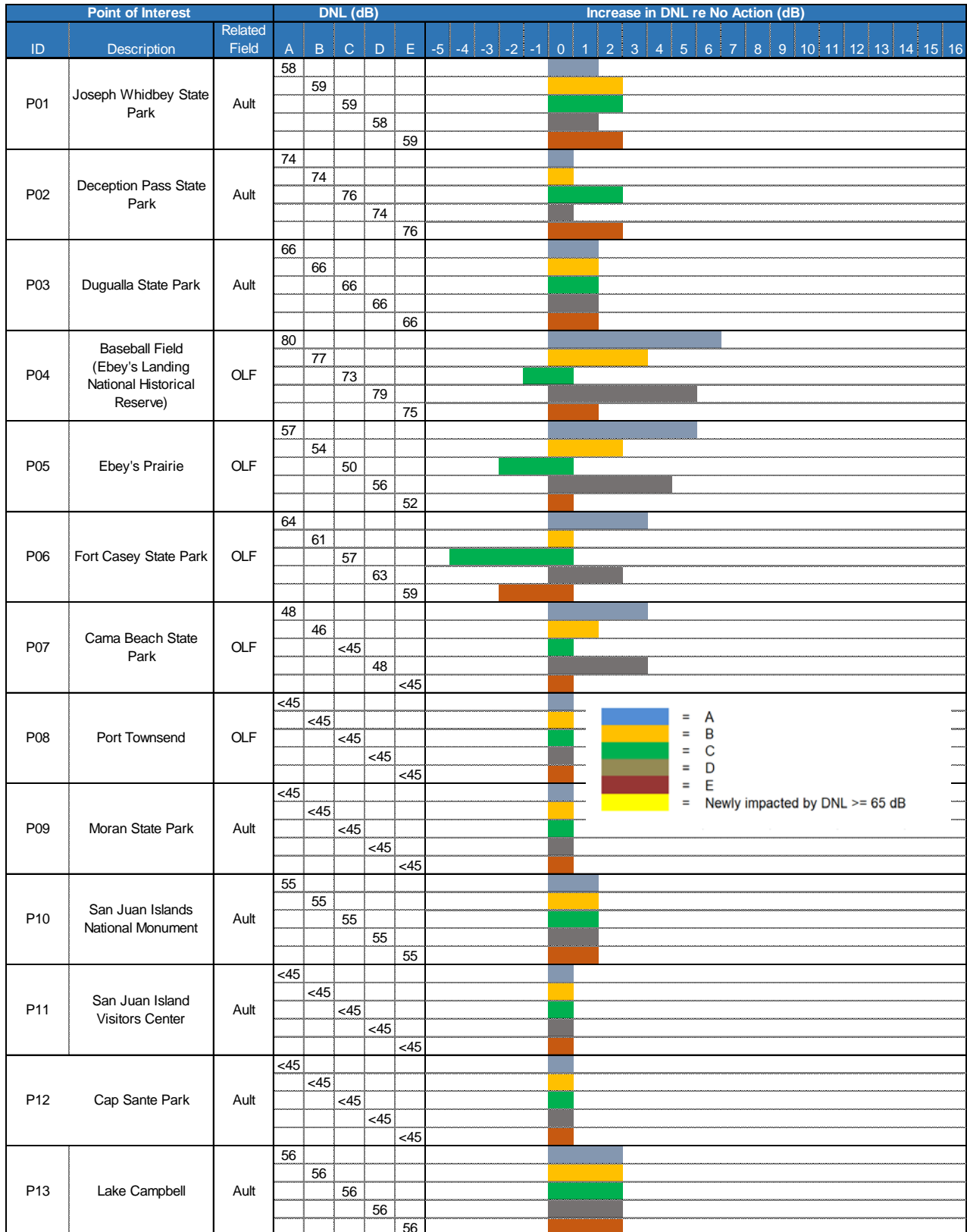


Figure A7.3-1 Estimated Aircraft DNL at POIs for the High-Tempo FCLP Year, Alternative 1

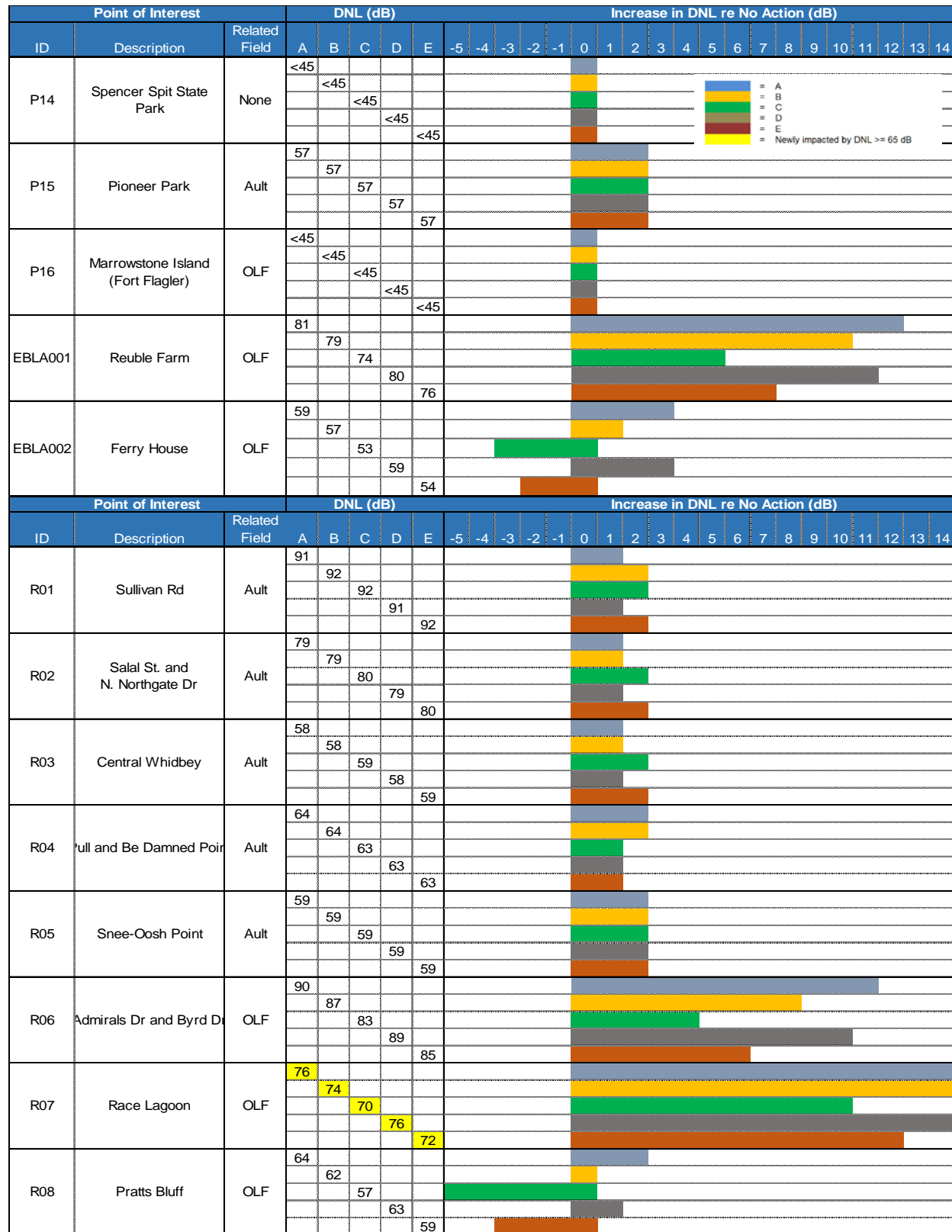


Figure A7.3-1 Estimated Aircraft DNL at POIs for the High-Tempo FCLP Year, Alternative 1 (continued)



Point of Interest		Related Field	DNL (dB)					Increase in DNL re No Action (dB)																																
ID	Description		A	B	C	D	E	-5	-4	-3	-2	-1	0	1	2	3	4	5	6	7	8	9	10	11	12	13	14	15	16											
S01	Oak Harbor High School	Ault	60																																					
			61																																					
			61																																					
			60																																					
S02	Crescent Harbor Elementary School	Ault	68																																					
			68																																					
			69																																					
			69																																					
S03	Coupeville Elementary School	OLF	62																																					
			60																																					
			56																																					
			62																																					
S04	Anacortes High School	Ault	50																																					
			50																																					
			50																																					
			50																																					
S05	Lopez Island School	None	<45																																					
			<45																																					
			<45																																					
			<45																																					
S06	Friday Harbor Elementary School	None	<45																																					
			<45																																					
			<45																																					
			<45																																					
S07	Sir James Douglas Elementary School	None	<45																																					
			<45																																					
			<45																																					
			<45																																					
S08	Fidalgo Elementary School	Ault	53																																					
			53																																					
			53																																					
			53																																					
S09	La Conner Elementary School	Ault	55																																					
			55																																					
			55																																					
			55																																					
S10	Elger Bay Elementary School	OLF	<45																																					
			<45																																					
			<45																																					
			<45																																					

█ = A  
█ = B  
█ = C  
█ = D  
█ = E  
█ = Newly impacted by DNL >= 65 dB

**Figure A7.3-1 Estimated Aircraft DNL at POIs for the High-Tempo FCLP Year, Alternative 1 (concluded)**

**Table A7.3-2 Estimated Potential Hearing Loss for the High-Tempo FCLP Year, Alternative 1A**

Band of $L_{eq(24)}$ (dB)	Average NIPTS (dB) <sup>(1)</sup>	10 <sup>th</sup> Percentile NIPTS (dB) <sup>(1)</sup>	Estimated Population				Change in population re No Action			
			Ault Field (on-Station)	Ault Field (off-Station)	OLF Coupeville (off-Station)	TOTAL	Ault Field (on-Station)	Ault Field (off-Station)	OLF Coupeville (off-Station)	TOTAL
74-75	0.5	3.5	-	-	-	-	-	-	-	-
75-76	1.0	4.0	-	1	137	138	-	-	105	105
76-77	1.0	4.5	-	195	189	384	-	41	143	184
77-78	1.5	5.0	-	275	166	441	-	(1)	120	119
78-79	2.0	5.5	-	150	100	250	-	(19)	76	56
79-80	2.5	6.0	-	133	85	218	-	31	78	108
80-81	3.0	7.0	-	77	73	150	-	2	71	73
81-82	3.5	8.0	-	64	64	127	-	12	64	76
82-83	4.0	9.0	-	48	53	101	-	10	53	63
83-84	4.5	10.0	-	34	62	95	-	(2)	62	59
84-85	5.5	11.0	-	27	71	98	-	15	71	85
85-86	6.0	12.0	-	10	2	11	-	-	2	2
86-87	7.0	13.5	-	9	-	9	-	2	-	2
87-88	7.5	15.0	-	6	-	6	-	1	-	1
88-89	8.5	16.5	-	4	-	4	-	2	-	2
89-90	9.5	18.0	-	1	-	1	-	1	-	1
90-91	10.5	19.5	-	-	-	-	-	-	-	-
91-92	11.5	21.0	-	-	-	-	-	-	-	-

(1) rounded to nearest 0.5 dB

Note: Average NIPTS values greater than 10 dB, and 10th Percentile NIPTS values greater than 12 dB are estimated based on extrapolating available data from EPA guidance (EPA 1982).

**Table A7.3-3 Estimated Potential Hearing Loss for the High-Tempo FCLP Year, Alternative 1B**

Band of $L_{eq(24)}$ (dB)	Average NIPTS (dB) <sup>(1)</sup>	10 <sup>th</sup> Percentile NIPTS (dB) <sup>(1)</sup>	Estimated Population				Change in population re No Action			
			Ault Field (on-Station)	Ault Field (off-Station)	OLF Coupeville (off-Station)	TOTAL	Ault Field (on-Station)	Ault Field (off-Station)	OLF Coupeville (off-Station)	TOTAL
74-75	0.5	3.5	-	-	-	-	-	-	-	-
75-76	1.0	4.0	-	6	63	69	-	6	30	36
76-77	1.0	4.5	195	370	104	669	195	215	58	468
77-78	1.5	5.0	-	350	83	433	-	73	37	111
78-79	2.0	5.5	-	261	72	333	-	92	48	140
79-80	2.5	6.0	-	174	61	235	-	72	54	126
80-81	3.0	7.0	-	99	56	155	-	23	55	78
81-82	3.5	8.0	-	73	63	136	-	21	63	85
82-83	4.0	9.0	-	61	62	123	-	23	62	85
83-84	4.5	10.0	-	36	1	37	-	-	1	1
84-85	5.5	11.0	-	27	-	27	-	14	-	14
85-86	6.0	12.0	-	23	-	23	-	14	-	14
86-87	7.0	13.5	-	9	-	9	-	2	-	2
87-88	7.5	15.0	-	7	-	7	-	3	-	3
88-89	8.5	16.5	-	4	-	4	-	2	-	2
89-90	9.5	18.0	-	2	-	2	-	2	-	2
90-91	10.5	19.5	-	-	-	-	-	-	-	-
91-92	11.5	21.0	-	-	-	-	-	-	-	-

(1) rounded to nearest 0.5 dB

Note: Average NIPTS values greater than 10 dB, and 10th Percentile NIPTS values greater than 12 dB are estimated based on extrapolating available data from EPA guidance (EPA 1982).

**Table A7.3-4 Estimated Potential Hearing Loss for the High-Tempo FCLP Year, Alternative 1C**

Band of $L_{eq(24)}$ (dB)	Average NIPTS (dB) <sup>(1)</sup>	10 <sup>th</sup> Percentile NIPTS (dB) <sup>(1)</sup>	Estimated Population				Change in population re No Action			
			Ault Field (on-Station)	Ault Field (off-Station)	OLF Coupeville (off-Station)	TOTAL	Ault Field (on-Station)	Ault Field (off-Station)	OLF Coupeville (off-Station)	TOTAL
74-75	0.5	3.5	-	-	-	-	-	-	-	-
75-76	1.0	4.0	-	76	14	90	-	76	(19)	57
76-77	1.0	4.5	607	382	54	1,043	607	228	7	842
77-78	1.5	5.0	-	453	62	515	-	176	17	193
78-79	2.0	5.5	-	305	68	372	-	136	43	179
79-80	2.5	6.0	-	280	2	281	-	178	(6)	172
80-81	3.0	7.0	-	144	-	145	-	69	(1)	68
81-82	3.5	8.0	-	82	0	82	-	31	(0)	31
82-83	4.0	9.0	-	65	-	65	-	27	-	27
83-84	4.5	10.0	-	41	-	41	-	5	-	5
84-85	5.5	11.0	-	29	-	29	-	17	-	17
85-86	6.0	12.0	-	29	-	29	-	19	-	19
86-87	7.0	13.5	-	10	-	10	-	3	-	3
87-88	7.5	15.0	-	8	-	8	-	4	-	4
88-89	8.5	16.5	-	5	-	5	-	3	-	3
89-90	9.5	18.0	-	2	-	2	-	2	-	2
90-91	10.5	19.5	-	-	-	-	-	-	-	-
91-92	11.5	21.0	-	-	-	-	-	-	-	-

(1) rounded to nearest 0.5 dB

Note: Average NIPTS values greater than 10 dB, and 10th Percentile NIPTS values greater than 12 dB are estimated based on extrapolating available data from EPA guidance (EPA 1982).

**Table A7.3-5 Estimated Potential Hearing Loss for the High-Tempo FCLP Year, Alternative 1D**

Band of $L_{eq(24)}$ (dB)	Average NIPTS (dB) <sup>(1)</sup>	10 <sup>th</sup> Percentile NIPTS (dB) <sup>(1)</sup>	Estimated Population				Change in population re No Action			
			Ault Field (on-Station)	Ault Field (off-Station)	OLF Coupeville (off-Station)	TOTAL	Ault Field (on-Station)	Ault Field (off-Station)	OLF Coupeville (off-Station)	TOTAL
74-75	0.5	3.5	-	-	-	-	-	-	-	-
75-76	1.0	4.0	-	1	159	160	-	1	126	127
76-77	1.0	4.5	-	240	169	408	-	85	122	207
77-78	1.5	5.0	-	321	133	454	-	44	88	132
78-79	2.0	5.5	-	191	92	284	-	22	68	90
79-80	2.5	6.0	-	144	75	220	-	42	68	110
80-81	3.0	7.0	-	83	66	149	-	7	65	72
81-82	3.5	8.0	-	69	59	128	-	18	59	76
82-83	4.0	9.0	-	49	58	107	-	10	58	68
83-84	4.5	10.0	-	35	69	104	-	(1)	69	68
84-85	5.5	11.0	-	30	26	55	-	17	26	43
85-86	6.0	12.0	-	10	1	11	-	1	1	1
86-87	7.0	13.5	-	9	-	9	-	2	-	2
87-88	7.5	15.0	-	6	-	6	-	2	-	2
88-89	8.5	16.5	-	4	-	4	-	2	-	2
89-90	9.5	18.0	-	1	-	1	-	1	-	1
90-91	10.5	19.5	-	-	-	-	-	-	-	-
91-92	11.5	21.0	-	-	-	-	-	-	-	-

(1) rounded to nearest 0.5 dB

Note: Average NIPTS values greater than 10 dB, and 10th Percentile NIPTS values greater than 12 dB are estimated based on extrapolating available data from EPA guidance (EPA 1982).

**Table A7.3-6 Estimated Potential Hearing Loss for the High-Tempo FCLP Year, Alternative 1E**

Band of $L_{eq(24)}$ (dB)	Average NIPTS (dB) <sup>(1)</sup>	10 <sup>th</sup> Percentile NIPTS (dB) <sup>(1)</sup>	Estimated Population				Change in population re No Action			
			Ault Field (on-Station)	Ault Field (off-Station)	OLF Coupeville (off-Station)	TOTAL	Ault Field (on-Station)	Ault Field (off-Station)	OLF Coupeville (off-Station)	TOTAL
74-75	0.5	3.5	-	-	-	-	-	-	-	-
75-76	1.0	4.0	-	57	14	70	-	57	(19)	38
76-77	1.0	4.5	415	407	69	892	415	253	23	691
77-78	1.5	5.0	-	407	62	468	-	130	16	146
78-79	2.0	5.5	-	295	55	350	-	126	31	157
79-80	2.5	6.0	-	245	64	309	-	143	57	199
80-81	3.0	7.0	-	126	52	178	-	51	51	102
81-82	3.5	8.0	-	79	1	80	-	28	1	28
82-83	4.0	9.0	-	64	-	64	-	26	0	26
83-84	4.5	10.0	-	38	0	38	-	2	0	2
84-85	5.5	11.0	-	29	-	29	-	16	-	16
85-86	6.0	12.0	-	26	-	26	-	17	-	17
86-87	7.0	13.5	-	10	-	10	-	3	-	3
87-88	7.5	15.0	-	8	-	8	-	3	-	3
88-89	8.5	16.5	-	5	-	5	-	3	-	3
89-90	9.5	18.0	-	2	-	2	-	2	-	2
90-91	10.5	19.5	-	-	-	-	-	-	-	-
91-92	11.5	21.0	-	-	-	-	-	-	-	-

(1) rounded to nearest 0.5 dB

Note: Average NIPTS values greater than 10 dB, and 10th Percentile NIPTS values greater than 12 dB are estimated based on extrapolating available data from EPA guidance (EPA 1982).

**Table A7.3-7 Average Indoor Nightly Probability of Awakening at Applicable POIs for the High-Tempo FCLP Year, Alternative 1**

Point of Interest				Annual Average Nightly (2200-0700) Probability of Awakening (%) <sup>(1)</sup>																			
Type	ID	Description	Related Field	Alt1A		Change from No Action		Alt1B		Change from No Action		Alt1C		Change from No Action		Alt1D		Change from No Action		Alt1E		Change from No Action	
				Windows Open	Windows Closed	Windows Open	Windows Closed	Windows Open	Windows Closed	Windows Open	Windows Closed	Windows Open	Windows Closed	Windows Open	Windows Closed	Windows Open	Windows Closed	Windows Open	Windows Closed	Windows Open	Windows Closed	Windows Open	Windows Closed
Residential <sup>(2)</sup>	R01	Sullivan Rd	Ault	70%	54%	8%	8%	74%	58%	12%	12%	79%	64%	17%	18%	71%	55%	9%	9%	78%	62%	16%	16%
	R02	Salal St. and N. Northgate Dr	Ault	52%	37%	8%	6%	55%	40%	11%	9%	61%	45%	17%	14%	53%	38%	9%	7%	60%	44%	16%	13%
	R03	Central Whidbey	Ault	21%	11%	4%	2%	23%	12%	6%	3%	26%	14%	9%	5%	22%	12%	5%	3%	26%	14%	9%	5%
	R04	Pull and Be Damned Point	Ault	27%	13%	6%	4%	28%	13%	7%	4%	31%	14%	10%	5%	27%	13%	6%	4%	30%	13%	9%	4%
	R05	Snee-Oosh Point	Ault	22%	8%	6%	3%	23%	8%	7%	3%	25%	8%	9%	3%	22%	8%	6%	3%	25%	8%	9%	3%
	R06	Admirals Dr and Byrd Dr	OLF	45%	32%	36%	26%	28%	19%	19%	13%	12%	8%	3%	2%	41%	29%	32%	23%	17%	11%	8%	5%
	R07	Race Lagoon	OLF	22%	10%	17%	8%	14%	6%	9%	4%	7%	2%	2%	-	20%	9%	15%	7%	9%	3%	4%	1%
	R08	Pratts Bluff	OLF	16%	11%	12%	9%	10%	6%	6%	4%	4%	2%	-	-	15%	9%	11%	7%	6%	3%	2%	1%
	R09	Cox Rd and Island Ridge Way	OLF	14%	9%	11%	7%	8%	5%	5%	3%	3%	2%	-	-	12%	8%	9%	6%	4%	3%	1%	1%
	R10	Skyline	None	8%	3%	2%	1%	9%	3%	3%	1%	11%	3%	5%	1%	9%	3%	3%	1%	10%	3%	4%	1%
	R11	Sequim	None	-	-	-	-	-	-	-	-	-	-	-	-	-	-	-	-	-	-	-	-
	R12	Port Angeles	None	1%	0%	1%	-	1%	0%	1%	-	1%	0%	1%	-	0%	-	-	-	1%	0%	1%	-
	R13	Beverly Beach, Freeland	OLF	7%	-	5%	-	4%	-	2%	-	2%	-	-	-	6%	-	4%	-	2%	-	-	-
	R14	E Sleeper Rd & Slumber Ln	Ault	46%	33%	6%	5%	50%	36%	10%	8%	56%	41%	16%	13%	47%	34%	7%	6%	54%	40%	14%	12%
	R15	Long Point Manor	OLF	26%	14%	15%	10%	20%	9%	9%	5%	15%	4%	4%	-	24%	13%	13%	9%	16%	5%	5%	1%
	R16	Rocky Point Heights	OLF	12%	4%	2%	1%	13%	4%	3%	1%	14%	4%	4%	1%	12%	4%	2%	1%	14%	4%	4%	1%
	R17	Port Townsend	None	1%	-	-	-	1%	-	-	-	0%	-	-1%	-	1%	-	-	-	1%	-	-	-
	R18	Marrowstone Island (Nordland)	None	-	-	-	-	-	-	-	-	0%	-	-	-	-	-	-	-	0%	-	-	-
	R19	Island Transit Offices, Coupeville	OLF	37%	24%	27%	19%	24%	14%	14%	9%	12%	6%	2%	1%	34%	22%	24%	17%	16%	8%	6%	3%
	R20	South Lopez Island (Agate Beach)	None	4%	1%	1%	-	4%	1%	1%	-	3%	1%	-	-	3%	1%	-	-	3%	1%	-	-
School (near residential)	S01	Oak Harbor High School	Ault	27%	16%	5%	3%	29%	18%	7%	5%	33%	21%	11%	8%	28%	17%	6%	4%	32%	20%	10%	7%
	S02	Crescent Harbor Elementary School	Ault	28%	17%	5%	4%	30%	18%	7%	5%	34%	21%	11%	8%	29%	18%	6%	5%	33%	21%	10%	8%
	S03	Coupeville Elementary School	OLF	19%	12%	14%	9%	12%	7%	7%	4%	5%	3%	-	-	17%	11%	12%	8%	7%	4%	2%	1%
	S04	Anacortes High School	Ault	3%	1%	1%	-	3%	1%	1%	-	3%	1%	1%	-	3%	1%	1%	-	3%	1%	1%	-
	S05	Lopez Island School	None	-	-	-	-	-	-	-	-	-	-	-	-	-	-	-	-	-	-	-	-
	S06	Friday Harbor Elementary School	None	-	-	-	-	-	-	-	-	-	-	-	-	-	-	-	-	-	-	-	-
	S07	Sir James Douglas Elementary School	None	-	-	-	-	-	-	-	-	-	-	-	-	-	-	-	-	-	-	-	-
	S08	Fidalgo Elementary School	Ault	10%	3%	3%	1%	10%	3%	3%	1%	11%	3%	4%	1%	10%	3%	3%	1%	11%	3%	4%	1%
	S09	La Conner Elementary School	Ault	11%	5%	3%	2%	11%	6%	3%	3%	11%	5%	3%	2%	11%	5%	3%	2%	11%	5%	3%	2%
	S10	Elger Bay Elementary School	OLF	0%	0%	-	-	0%	0%	-	-	0%	0%	-	-	0%	0%	-	-	0%	0%	-	-

(1) assumes 15 dB and 25 dB of Noise Level Reductions for windows open and closed, respectively.

(2) R01 and R06 include interior SELs greater than 100 dB with windows open



Table A7.3-8 Indoor Speech Interference for the High-Tempo FCLP Year, Alternative 1

Point of Interest				Annual Average Daily Indoor Daytime (0700-2200) Events per Hour (1)																			
				Alt1A		Change from No Action		Alt1B		Change from No Action		Alt1C		Change from No Action		Alt1D		Change from No Action		Alt1E		Change from No Action	
Type	ID	Description	Related Field	Windows Open	Windows Closed	Windows Open	Windows Closed	Windows Open	Windows Closed	Windows Open	Windows Closed	Windows Open	Windows Closed	Windows Open	Windows Closed	Windows Open	Windows Closed	Windows Open	Windows Closed	Windows Open	Windows Closed	Windows Open	Windows Closed
Residential	R01	Sullivan Rd	Ault	9	9	+1	+1	10	10	+2	+2	10	10	+2	+2	9	9	+1	+1	10	10	+2	+2
	R02	Salaf St. and N. Northgate Dr	Ault	9	9	+1	+1	9	9	+1	+1	10	10	+2	+2	9	9	+1	+1	10	10	+2	+2
	R03	Central Whidbey	Ault	5	-	-	-	6	-	+1	-	6	-	+1	-	5	-	-	-	6	-	+1	-
	R04	Pull and Be Damned Point	Ault	3	1	+1	-	3	1	+1	-	3	1	+1	-	3	1	+1	-	3	1	+1	-
	R05	Snee-Oosh Point	Ault	2	1	-	-	2	1	-	-	2	1	-	-	2	1	-	-	2	1	-	-
	R06	Admirals Dr and Byrd Dr	OLF	2	2	+2	+2	1	1	+1	+1	1	1	+1	+1	2	2	+2	+2	1	1	+1	+1
	R07	Race Lagoon	OLF	2	1	+1	+1	1	1	-	+1	1	-	-	-	2	1	+1	+1	1	-	-	-
	R08	Pratts Bluff	OLF	2	1	+2	+1	1	1	+1	+1	1	-	+1	-	2	1	+2	+1	1	-	+1	-
	R09	Cox Rd and Island Ridge Way	OLF	1	-	+1	-	1	-	+1	-	-	-	-	-	1	-	+1	-	1	-	+1	-
	R10	Skyline	None	-	-	-	-	-	-	-	-	-	-	-	1	-	+1	-	-	1	-	+1	-
	R11	Sequim	None	-	-	-	-	-	-	-	-	-	-	-	-	-	-	-	-	-	-	-	-
	R12	Port Angeles	None	-	-	-	-	-	-	-	-	-	-	-	-	-	-	-	-	-	-	-	-
	R13	Beverly Beach, Freeland	OLF	-	-	-	-	-	-	-	-	-	-	-	-	-	-	-	-	-	-	-	-
	R14	E Sleeper Rd & Slumber Ln	Ault	9	8	+1	+1	9	8	+1	+1	10	9	+2	+2	9	8	+1	+1	10	9	+2	+2
	R15	Long Point Manor	OLF	3	2	+2	+1	2	1	+1	-	1	1	-	-	3	2	+2	+1	2	1	+1	-
	R16	Rocky Point Heights	OLF	2	1	-	-	2	1	-	-	2	1	-	-	2	1	-	-	2	1	-	-
	R17	Port Townsend	None	-	-	-	-	-	-	-	-	-	-	-	-	-	-	-	-	-	-	-	-
	R18	Marrowstone Island (Nordland)	None	-	-	-	-	-	-	-	-	-	-	-	-	-	-	-	-	-	-	-	-
	R19	Island Transit Offices, Coupeville	OLF	2	2	+1	+1	2	1	+1	-	1	1	-	-	2	2	+1	+1	1	1	-	-
	R20	South Lopez Island (Agate Beach)	None	-	-	-	-	-	-	-	-	-	-	-	-	-	-	-	-	-	-	-	-
School (near residential)	S01	Oak Harbor High School	Ault	6	2	-	-	7	3	+1	+1	7	3	+1	+1	7	3	+1	+1	7	3	+1	+1
	S02	Crescent Harbor Elementary School	Ault	5	2	-	-	6	2	+1	-	7	3	+2	+1	6	2	+1	-	6	3	+1	+1
	S03	Coupeville Elementary School	OLF	2	1	+1	+1	2	1	+1	+1	1	-	-	-	2	1	+1	+1	1	1	-	+1
	S04	Anacortes High School	Ault	-	-	-	-	-	-	-	-	-	-	-	-	-	-	-	-	-	-	-	-
	S05	Lopez Island School	None	-	-	-	-	-	-	-	-	-	-	-	-	-	-	-	-	-	-	-	-
	S06	Friday Harbor Elementary School	None	-	-	-	-	-	-	-	-	-	-	-	-	-	-	-	-	-	-	-	-
	S07	Sir James Douglas Elementary School	None	-	-	-	-	-	-	-	-	-	-	-	-	-	-	-	-	-	-	-	-
	S08	Fidalgo Elementary School	Ault	-	-	-	-	-	-	-	-	-	-	-	-	-	-	-	-	-	-	-	-
	S09	La Conner Elementary School	Ault	1	-	-	-	1	1	-	+1	1	-	-	-	1	-	-	-	1	-	-	-
	S10	Elger Bay Elementary School	OLF	-	-	-	-	-	-	-	-	-	-	-	-	-	-	-	-	-	-	-	-

**Table A7.3-9 Classroom Learning Interference for the High-Tempo FCLP Year, Alternative 1**

Representative School Location				Alt1A					Change from No Action				
				Indoor <sup>(1)</sup>					Indoor <sup>(1)</sup>				
				Windows Open		Events			Windows Closed		Events		
Type	ID	Description	Related Field	Outdoor L <sub>eq(8h)</sub> (dB)	L <sub>eq(8h)</sub> (dB)	per Hour <sup>(2)</sup>	L <sub>eq(8h)</sub> (dB)	per Hour <sup>(2)</sup>	Outdoor L <sub>eq(8h)</sub> (dB)	L <sub>eq(8h)</sub> (dB)	per Hour <sup>(2)</sup>	L <sub>eq(8h)</sub> (dB)	per Hour <sup>(2)</sup>
School Surrogate	R03	Central Whidbey	Ault	58	<45	5	<45	-	+1	+1	+1	+1	-
	R11	Sequim	None	<45	<45	-	<45	-	+1	+1	-	+1	-
School	S01	Oak Harbor High School	Ault	57	<45	6	<45	2	-	-	+1	-	-
	S02	Crescent Harbor Elementary School	Ault	68	53	5	<45	2	+1	+1	+1	+1	-
	S03	Coupeville Elementary School	OLF	57	<45	2	<45	1	+5	+5	+2	+5	+1
	S04	Anacortes High School	Ault	47	<45	-	<45	-	+1	+1	-	+1	-
	S05	Lopez Island School	None	<45	<45	-	<45	-	+1	+1	-	+1	-
	S06	Friday Harbor Elementary School	None	<45	<45	-	<45	-	-	-	-	-	-
	S07	Sir James Douglas Elementary School	None	<45	<45	-	<45	-	-3	-3	-	-3	-
	S08	Fidalgo Elementary School	Ault	49	<45	-	<45	-	-	-	-	-	-
	S09	La Conner Elementary School	Ault	51	<45	1	<45	-	+1	+1	-	+1	-
	S10	Elger Bay Elementary School	OLF	<45	<45	-	<45	-	+1	+1	-	+1	-
Number of Sites Exceeding 1 Intrusive Event per Hour						4		2			1		-
Minimum Number of Intrusive Events per Hour if Exceeding 1								2			+2		-
Maximum Number of Intrusive Events per Hour if Exceeding 1						6		2			+2		-
Point of Interest				Alt1B					Change from No Action				
School Surrogate	R03	Central Whidbey	Ault	58	<45	5	<45	-	+1	+1	+1	+1	-
	R11	Sequim	None	<45	<45	-	<45	-	+1	+1	-	+1	-
School	S01	Oak Harbor High School	Ault	58	<45	7	<45	2	+1	+1	+2	+1	-
	S02	Crescent Harbor Elementary School	Ault	68	53	6	<45	2	+1	+1	+2	+1	-
	S03	Coupeville Elementary School	OLF	55	<45	1	<45	1	+3	+3	+1	+3	+1
	S04	Anacortes High School	Ault	47	<45	-	<45	-	+1	+1	-	+1	-
	S05	Lopez Island School	None	<45	<45	-	<45	-	-	-	-	-	-
	S06	Friday Harbor Elementary School	None	<45	<45	-	<45	-	-	-	-	-	-
	S07	Sir James Douglas Elementary School	None	<45	<45	-	<45	-	-3	-3	-	-3	-
	S08	Fidalgo Elementary School	Ault	50	<45	-	<45	-	+1	+1	-	+1	-
	S09	La Conner Elementary School	Ault	52	<45	1	<45	-	+2	+2	-	+2	-
	S10	Elger Bay Elementary School	OLF	<45	<45	-	<45	-	+1	+1	-	+1	-
Number of Sites Exceeding 1 Intrusive Event per Hour						3		2			2		-
Minimum Number of Intrusive Events per Hour if Exceeding 1								5			+2		-
Maximum Number of Intrusive Events per Hour if Exceeding 1						7		2			+2		-
Point of Interest				Alt1C					Change from No Action				
School Surrogate	R03	Central Whidbey	Ault	58	<45	6	<45	-	+1	+1	+2	+1	-
	R11	Sequim	None	<45	<45	-	<45	-	+1	+1	-	+1	-
School	S01	Oak Harbor High School	Ault	58	<45	7	<45	3	+1	+1	+2	+1	+1
	S02	Crescent Harbor Elementary School	Ault	68	53	6	<45	3	+1	+1	+2	+1	+1
	S03	Coupeville Elementary School	OLF	52	<45	1	<45	-	-	-	+1	-	-
	S04	Anacortes High School	Ault	47	<45	-	<45	-	+1	+1	-	+1	-
	S05	Lopez Island School	None	<45	<45	-	<45	-	+1	+1	-	+1	-
	S06	Friday Harbor Elementary School	None	<45	<45	-	<45	-	-	-	-	-	-
	S07	Sir James Douglas Elementary School	None	<45	<45	-	<45	-	-3	-3	-	-3	-
	S08	Fidalgo Elementary School	Ault	50	<45	-	<45	-	+1	+1	-	+1	-
	S09	La Conner Elementary School	Ault	51	<45	1	<45	-	+1	+1	-	+1	-
	S10	Elger Bay Elementary School	OLF	<45	<45	-	<45	-	+1	+1	-	+1	-
Number of Sites Exceeding 1 Intrusive Event per Hour						3		2			3		-
Minimum Number of Intrusive Events per Hour if Exceeding 1								6			+2		-
Maximum Number of Intrusive Events per Hour if Exceeding 1						7		3			+2		-

Notes:  
 (1) assumes 15 dB and 25 dB of Noise Level Reductions for windows open and closed, respectively.  
 (2) Number of Average School-Day Events per hour during 8-hour school day (0800-1600) At or Above an Indoor Maximum (single-event) Sound Level (L<sub>max</sub>) of 50 dB;

**Table A7.3-9 Classroom Learning Interference for High-Tempo FCLP Year, Alternative 1  
(concluded)**

Representative School Location				Alt1D						Change from No Action					
				Outdoor		Indoor <sup>(1)</sup>				Outdoor		Indoor <sup>(1)</sup>			
						Windows Open		Windows Closed				Windows Open		Windows Closed	
Type	ID	Description	Related Field	L <sub>eq(8h)</sub> (dB)	L <sub>eq(8h)</sub> (dB)	Events per Hour <sup>(2)</sup>	L <sub>eq(8h)</sub> (dB)	Events per Hour <sup>(2)</sup>	L <sub>eq(8h)</sub> (dB)	L <sub>eq(8h)</sub> (dB)	Events per Hour <sup>(2)</sup>	L <sub>eq(8h)</sub> (dB)	Events per Hour <sup>(2)</sup>		
School Surrogate	R03	Central Whidbey	Ault	58	<45	5	<45	-	+1	+1	+1	+1	-		
	R11	Sequim	None	<45	<45	-	<45	-	+1	+1	-	+1	-		
School	S01	Oak Harbor High School	Ault	57	<45	6	<45	2	-	-	+1	-	-		
	S02	Crescent Harbor Elementary School	Ault	68	53	5	<45	2	+1	+1	+1	+1	-		
	S03	Coupeville Elementary School	OLF	57	<45	2	<45	1	+5	+5	+2	+5	+1		
	S04	Anacortes High School	Ault	47	<45	-	<45	-	+1	+1	-	+1	-		
	S05	Lopez Island School	None	<45	<45	-	<45	-	+1	+1	-	+1	-		
	S06	Friday Harbor Elementary School	None	<45	<45	-	<45	-	+1	-	-	-	-		
	S07	Sir James Douglas Elementary School	None	<45	<45	-	<45	-	+1	+1	-	+1	-		
	S08	Fidalgo Elementary School	Ault	49	<45	-	<45	-	-	-	-	-	-		
	S09	La Conner Elementary School	Ault	51	<45	1	<45	-	+1	+1	-	+1	-		
	S10	Elger Bay Elementary School	OLF	<45	<45	-	<45	-	+1	+1	-	+1	-		
Number of Sites Exceeding 1 Intrusive Event per Hour						4		2			1		-		
Minimum Number of Intrusive Events per Hour if Exceeding 1						5		2			+2		-		
Maximum Number of Intrusive Events per Hour if Exceeding 1						6		2			+2		-		
Point of Interest				Alt1E						Change from No Action					
School Surrogate	R03	Central Whidbey	Ault	58	<45	6	<45	-	+1	+1	+2	+1	-		
	R11	Sequim	None	<45	<45	-	<45	-	+1	+1	-	+1	-		
School	S01	Oak Harbor High School	Ault	58	<45	7	<45	3	+1	+1	+2	+1	+1		
	S02	Crescent Harbor Elementary School	Ault	68	53	6	<45	2	+1	+1	+2	+1	-		
	S03	Coupeville Elementary School	OLF	53	<45	1	<45	-	+1	+1	+1	+1	-		
	S04	Anacortes High School	Ault	47	<45	-	<45	-	+1	+1	-	+1	-		
	S05	Lopez Island School	None	<45	<45	-	<45	-	+2	+2	-	+2	-		
	S06	Friday Harbor Elementary School	None	<45	<45	-	<45	-	+1	-	-	-	-		
	S07	Sir James Douglas Elementary School	None	<45	<45	-	<45	-	+1	+1	-	+1	-		
	S08	Fidalgo Elementary School	Ault	50	<45	-	<45	-	+1	+1	-	+1	-		
	S09	La Conner Elementary School	Ault	51	<45	1	<45	-	+1	+1	-	+1	-		
	S10	Elger Bay Elementary School	OLF	<45	<45	-	<45	-	+1	+1	-	+1	-		
Number of Sites Exceeding 1 Intrusive Event per Hour						3		2			3		-		
Minimum Number of Intrusive Events per Hour if Exceeding 1						6		2			+2		-		
Maximum Number of Intrusive Events per Hour if Exceeding 1						7		3			+2		-		

Notes:  
(1) assumes 15 dB and 25 dB of Noise Level Reductions for windows open and closed, respectively.

Table A7.3-10 Recreational Speech Interference for High-Tempo FCLP Year, Alternative 1

Representative Park Receptor			Annual Average Outdoor Daily Daytime Events per Hour, NA 50 L <sub>max</sub>																	
			Alt1A		Increase re No Action		Alt1B		Increase re No Action		Alt1C		Increase re No Action		Alt1D		Increase re No Action		Alt1E	
Type	ID	Description	Day	Night	Day	Night	Day	Night	Day	Night	Day	Night	Day	Night	Day	Night	Day	Night	Day	Night
Park	P01	Joseph Whidbey State Park	9	2	+1	-	9	2	+1	-	10	3	+2	+1	9	2	+1	-	10	3
	P02	Deception Pass State Park	9	2	+1	-	9	2	+1	-	10	3	+2	+1	9	2	+1	-	10	3
	P03	Dugalla State Park	8	2	-	-	9	2	+1	-	9	3	+1	+1	9	2	+1	-	9	3
	P04	Baseball Field (Ebey's Landing National Historical Reserve)	5	1	+2	-	4	1	+1	-	3	1	-	-	5	1	+2	-	4	1
	P05	Ebey's Landing State Park	4	1	+2	+1	3	1	+1	+1	3	1	+1	+1	4	1	+2	+1	3	1
	P06	Fort Casey State Park	3	1	+2	+1	2	1	+1	+1	1	-	-	-	3	1	+2	+1	2	-
	P07	Cama Beach State Park	5	1	+2	+1	4	1	+1	+1	3	1	-	+1	5	1	+2	+1	4	1
	P08	Port Townsend	2	1	+1	+1	2	1	+1	+1	1	-	-	-	2	1	+1	+1	1	-
	P09	Moran State Park	-	-	-	-	-	-	-	-	-	-	-	-	-	-	-	-	-	-
	P10	San Juan Islands National Monument	8	2	+1	-	9	2	+2	-	9	3	+2	+1	8	2	+1	-	9	3
	P11	San Juan Island Visitors Center	-	-	-	-	-	-	-	-	-	-	-	-	-	-	-	-	-	-
	P12	Cap Sante Park	-	-	-	-	-	-	-	-	1	-	+1	-	1	-	+1	-	1	-
	P13	Lake Campbell	5	1	+1	-	5	1	+1	-	5	2	+1	+1	5	1	+1	-	5	2
	P14	Spencer Spit State Park	-	-	-	-	-	-	-	-	-	-	-	-	-	-	-	-	-	-
	P15	Pioneer Park	4	1	-	-	4	1	-	-	4	1	-	-	4	1	-	-	4	1
	P16	Marrowstone Island (Fort Flager)	2	1	+2	+1	1	-	+1	-	-	-	-	-	1	1	+1	+1	1	-
EBLA001	Reuble Farm	4	1	+2	+1	3	1	+1	+1	2	-	-	-	4	1	+2	+1	3	1	
EBLA002	Ferry House	4	1	+2	+1	3	1	+1	+1	2	-	-	-	4	1	+2	+1	3	1	
Residential	R01	Sullivan Rd	9	2	+1	-	10	3	+2	+1	10	3	+2	+1	9	2	+1	-	10	3
	R02	Salal St. and N. Northgate Dr	9	2	+1	-	10	3	+2	+1	10	3	+2	+1	9	2	+1	-	10	3
	R03	Central Whidbey	8	2	+1	-	9	2	+2	-	9	3	+2	+1	8	2	+1	-	9	3
	R04	Pull and Be Damned Point	8	2	+1	-	9	2	+2	-	9	3	+2	+1	9	2	+2	-	9	3
	R05	Snee-Oosh Point	8	2	+1	-	8	2	+1	-	9	3	+2	+1	8	2	+1	-	9	3
	R06	Admirals Dr and Byrd Dr	3	1	+2	+1	2	1	+1	+1	1	-	-	-	3	1	+2	+1	2	-
	R07	Race Lagoon	5	1	+2	-	4	1	+1	-	3	1	-	-	4	1	+1	-	3	1
	R08	Pratts Bluff	3	1	+2	+1	2	1	+1	+1	1	-	-	-	3	1	+2	+1	2	-
	R09	Cox Rd and Island Ridge Way	2	1	+1	+1	2	1	+1	+1	1	-	-	-	2	1	+1	+1	1	-
	R10	Skyline	4	1	-	-	4	1	-	-	5	2	+1	+1	4	1	-	-	5	2
	R11	Sequim	1	-	+1	-	1	-	+1	-	1	-	+1	-	1	-	+1	-	1	-
	R12	Port Angeles	1	-	-	-	1	-	-	-	1	-	-	-	1	-	-	-	1	-
	R13	Beverly Beach, Freeland	1	-	+1	-	1	-	+1	-	-	-	-	-	1	-	+1	-	-	-
	R14	E Sleeper Rd & Slumber Ln	9	2	+1	-	10	2	+2	-	10	3	+2	+1	9	2	+1	-	10	3
	R15	Long Point Manor	8	3	+1	+1	9	3	+2	+1	8	3	+1	+1	9	3	+2	+1	8	3
	R16	Rocky Point Heights	5	2	+1	+1	5	2	+1	+1	5	2	+1	+1	5	2	+1	+1	5	2
R17	Port Townsend	2	1	+1	+1	1	-	-	-	-	-	-1	-	1	1	-	+1	1	-	
R18	Marrowstone Island (Nordland)	-	-	-	-	-	-	-	-	-	-	-	-	-	-	-	-	-	-	
R19	Island Transit Offices, Coupeville	5	2	+2	+1	4	1	+1	-	3	1	-	-	5	1	+2	-	4	1	
R20	South Lopez Island (Agate Beach)	4	1	+1	-	4	1	+1	-	4	1	+1	-	4	1	+1	-	4	1	
School	S01	Oak Harbor High School	9	2	+1	-	9	2	+1	-	10	3	+2	+1	9	2	+1	-	10	3
	S02	Crescent Harbor Elementary School	8	2	+1	-	9	2	+2	-	9	3	+2	+1	9	2	+2	-	9	3
	S03	Coupeville Elementary School	5	1	+2	-	4	1	+1	-	3	1	-	-	4	1	+1	-	3	1
	S04	Anacortes High School	1	-	-	-	1	-	-	-	1	-	-	-	1	-	-	-	1	-
	S05	Lopez Island School	-	-	-	-	-	-	-	-	-	-	-	-	-	-	-	-	-	-
	S06	Friday Harbor Elementary School	-	-	-	-	-	-	-	-	-	-	-	-	-	-	-	-	-	-
	S07	Sir James Douglas Elementary School	-	-	-	-	-	-	-	-	-	-	-	-	-	-	-	-	-	-
	S08	Fidalgo Elementary School	4	1	-	-	5	1	+1	-	5	2	+1	+1	5	1	+1	-	5	1
	S09	La Conner Elementary School	4	1	+1	-	4	1	+1	-	4	1	+1	-	4	1	+1	-	4	1
	S10	Elger Bay Elementary School	1	-	-	-	1	-	-	-	1	-	-	-	1	-	-	-	1	-

**Table A7.4-1 Estimated Acreage and Population within the DNL Contour Ranges<sup>1</sup> for the NAS Whidbey Island Complex, Alternative 2 (High-Tempo FCLP Year)<sup>2,3</sup>**

	<b>DNL Contour Ranges</b>							
	<b>65 to &lt;70 dB DNL</b>		<b>70 to &lt;75 dB DNL</b>		<b>Greater than or equal to 75 dB DNL</b>		<b>Total</b>	
	<b>Area (acres)</b>	<b>Pop<sup>4</sup></b>	<b>Area (acres)</b>	<b>Pop<sup>4</sup></b>	<b>Area (acres)</b>	<b>Pop<sup>4</sup></b>	<b>Area (acres)</b>	<b>Pop<sup>4</sup></b>
<b>Ault Field</b>								
<b>No Action Alternative</b>								
High-Tempo FCLP Year	3,503	3,347	3,260	2,677	5,864	3,530	12,628	9,554
<b>Alternative 2</b>								
Scenario A (20/80 FCLP split)	4,085 (+582)	3,738 (+391)	3,272 (+12)	1,929 (-748)	5,950 (+86)	3,516 (-14)	13,306 (+678)	9,183 (-371)
Scenario B (50/50 FCLP split)	3,952 (+449)	3,661 (+314)	3,267 (+7)	2,491 (-186)	6,492 (+628)	3,814 (+284)	13,712 (+1,084)	9,966 (+412)
Scenario C (80/20 FCLP split)	3,992 (+489)	3,766 (+419)	3,139 (-121)	2,517 (-160)	6,845 (+981)	3,962 (+432)	13,975 (+1,347)	10,245 (+691)
Scenario D (30/70 FCLP split)	4,025 (+522)	3,753 (+406)	3,244 (-16)	2,225 (-452)	6,192 (+328)	3,630 (+100)	13,461 (+833)	9,608 (+54)
Scenario E (70/30 FCLP split)	3,968 (+465)	3,721 (+374)	3,162 (-98)	2,486 (-191)	6,743 (+879)	3,909 (+379)	13,873 (+1,245)	10,116 (+562)
<b>OLF Coupeville</b>								
<b>No Action Alternative</b>								
High-Tempo FCLP Year	3,718	881	3,054	786	637	583	7,409	2,250
<b>Alternative 2</b>								
Scenario A (20/80 FCLP split)	1,562 (-2,156)	562 (-319)	3,282 (+228)	949 (+163)	5,324 (+4,687)	1,938 (+1,355)	10,168 (+2,759)	3,449 (+1,199)
Scenario B (50/50 FCLP split)	2,062 (-1,656)	561 (-320)	3,461 (+407)	1,060 (+274)	3,920 (+3,283)	1,496 (+913)	9,443 (+2,034)	3,117 (+867)
Scenario C (80/20 FCLP split)	3,447 (-271)	1,027 (+146)	3,176 (+122)	1,042 (+256)	1,629 (+992)	736 (+153)	8,252 (+843)	2,805 (+555)
Scenario D (30/70 FCLP split)	1,586 (-2,132)	527 (-354)	3,426 (+372)	1,006 (+220)	4,968 (+4,331)	1,830 (+1,247)	9,980 (+2,571)	3,363 (+1,113)
Scenario E (70/30 FCLP split)	2,922 (-796)	825 (-56)	3,224 (+170)	1,051 (+265)	2,718 (2,081)	1,073 (+490)	8,865 (+1,456)	2,950 (+700)
<b>NAS Whidbey Island Complex</b>								
<b>No Action Alternative</b>								
High-Tempo FCLP Year	7,221	4,228	6,315	3,463	6,502	4,113	20,037	11,804
<b>Alternative 2</b>								
Scenario A (20/80 FCLP split)	5,647 (-1,574)	4,300 (+72)	6,554 (+239)	2,879 (-584)	11,273 (+4,771)	5,454 (+1,341)	23,474 (+3,437)	12,632 (+828)
Scenario B (50/50 FCLP split)	6,015 (-1,206)	4,222 (-6)	6,728 (+413)	3,551 (+88)	10,412 (+3,910)	5,310 (+1,197)	23,156 (+3,119)	13,083 (+1,279)
Scenario C (80/20 FCLP split)	7,439 (+218)	4,793 (+565)	6,315 (0)	3,559 (+96)	8,474 (+1,972)	4,698 (+585)	22,228 (+2,191)	13,050 (+1,246)
Scenario D (30/70 FCLP split)	5,612 (-1,609)	4,280 (+52)	6,670 (+355)	3,231 (-232)	11,159 (+4,657)	5,460 (+1,347)	23,441 (+3,404)	12,972 (+1,168)
Scenario E (70/30 FCLP split)	6,890 (-331)	4,546 (+318)	6,386 (+71)	3,538 (+75)	9,461 (+2,959)	4,982 (+869)	22,738 (+2,701)	13,065 (+1,261)

**Table A7.4-1 Estimated Acreage and Population within the DNL Contour Ranges<sup>1</sup> for the NAS Whidbey Island Complex, Alternative 2 (High-Tempo FCLP Year)<sup>2,3</sup>**

<i>DNL Contour Ranges</i>							
<i>65 to &lt;70 dB DNL</i>		<i>70 to &lt;75 dB DNL</i>		<i>Greater than or equal to 75 dB DNL</i>		<i>Total</i>	
<i>Area (acres)</i>	<i>Pop<sup>4</sup></i>	<i>Area (acres)</i>	<i>Pop<sup>4</sup></i>	<i>Area (acres)</i>	<i>Pop<sup>4</sup></i>	<i>Area (acres)</i>	<i>Pop<sup>4</sup></i>

Notes:

- <sup>1</sup> All five scenarios are outlined in Section 2.3.3, where the split represents the percent of FCLPs conducted at Ault Field and OLF Coupeville, respectively (i.e., 20/80 FCLP split = 20 percent of FCLPs at Ault Field and 80 percent of FCLPs at OLF Coupeville).
- <sup>2</sup> Acreage presented does not include areas over water or areas over the NAS Whidbey Island complex.
- <sup>3</sup> The difference between the No Action Alternative and Alternative 1 is noted in parentheses.
- <sup>4</sup> Population counts of people within the DNL contour ranges were computed using 2010 Census block-level data. The percent area of the census block covered by the DNL contour range was applied to the population of that census block to estimate the population within the DNL contour range (e.g., if 25 percent of the census block is within a DNL contour range, then 25 percent of the population is included in the population count). This calculation assumes an even distribution of the population across the census block, and it excludes population on military properties within the DNL contour ranges (NAS Whidbey Island [Ault Field], the Seaplane Base, and OLF Coupeville). All population estimates for areas within the dB DNL contours utilized 2010 U.S. Census Bureau data. A 7.1-percent growth factor was applied to the 2010 census statistics to account for population changes between 2010 and 2020 based on medium forecasted population projections for Island County during that period (Washington State Office of Financial Management, 2017). To simplify the analysis, this growth factor was also used for areas of Skagit County that fall within the 65+ dB DNL contours. These data should be used for comparative purposes only and are not considered actual numbers within the DNL contour range.
- <sup>5</sup> Numbers have been rounded to ensure totals sum.

Key:

- dB = decibel
- DNL = day-night average sound level
- FCLP = Field Carrier Landing Practice



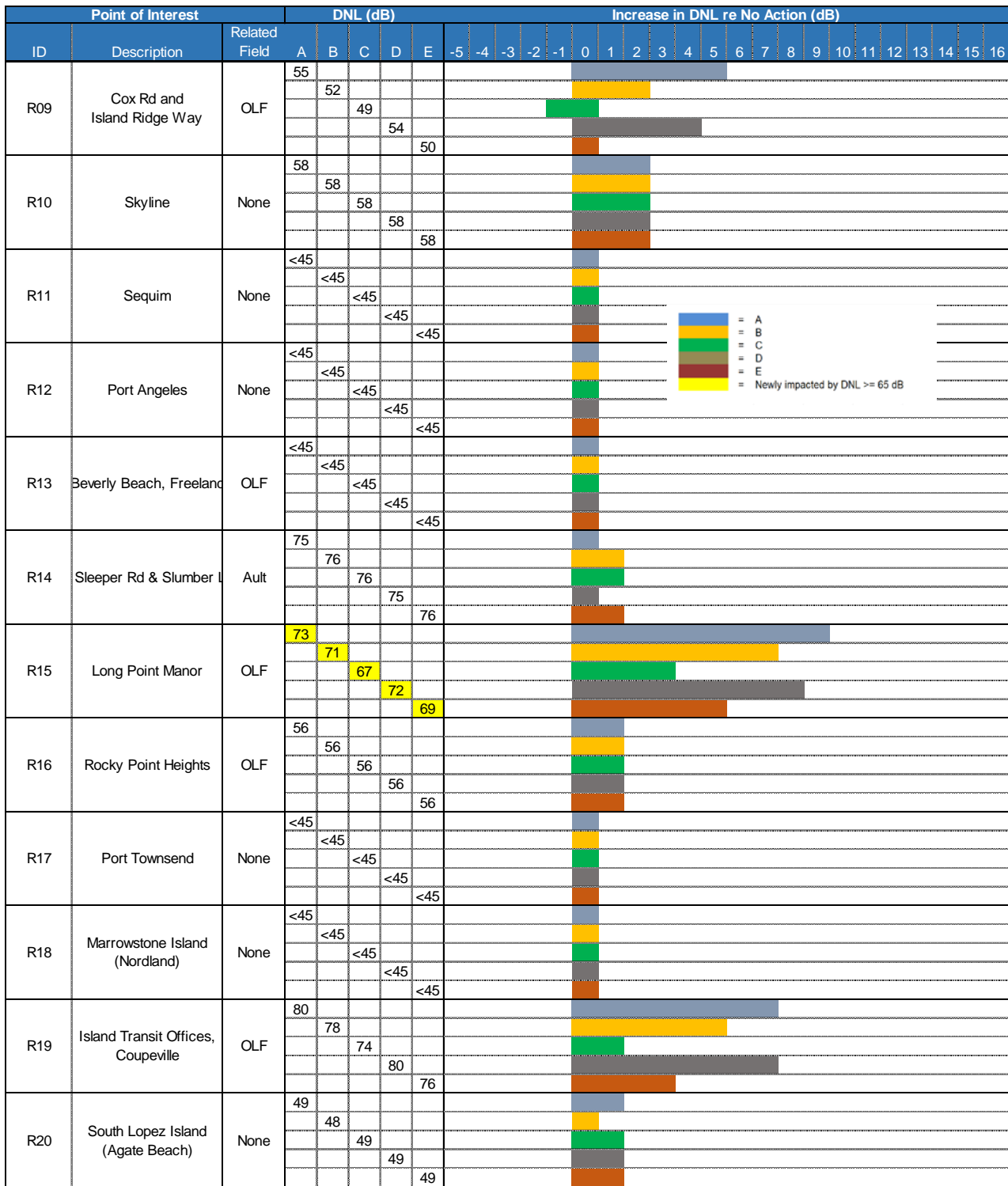
Point of Interest			DNL (dB)					Increase in DNL re No Action (dB)																										
ID	Description	Related Field	A	B	C	D	E	-5	-4	-3	-2	-1	0	1	2	3	4	5	6	7	8	9	10	11	12	13	14	15	16					
P14	Spencer Spit State Park	None	<45																															
				<45																														
					<45																													
						<45																												
P15	Pioneer Park	Ault	57																															
				57																														
					57																													
						57																												
P16	Marrowstone Island (Fort Flagler)	OLF	<45																															
				<45																														
					<45																													
						<45																												
EBLA001	Ferry House	OLF	80																															
				78																														
					75																													
						80																												
EBLA002	Reuble Farm	OLF	59																															
				56																														
					53																													
						58																												

Point of Interest			DNL (dB)					Increase in DNL re No Action (dB)																										
ID	Description	Related Field	A	B	C	D	E	-5	-4	-3	-2	-1	0	1	2	3	4	5	6	7	8	9	10	11	12	13	14	15	16					
R01	Sullivan Rd	Ault	91																															
				91																														
					92																													
						91																												
R02	Salal St. and N. Northgate Dr	Ault	79																															
				79																														
					80																													
						79																												
R03	Central Whidbey	Ault	59																															
				59																														
					59																													
						59																												
R04	Hull and Be Damned Point	Ault	64																															
				63																														
					63																													
						63																												
R05	Snee-Oosh Point	Ault	59																															
				59																														
					58																													
						58																												
R06	Admirals Dr and Byrd Dr	OLF	89																															
				87																														
					83																													
						89																												
R07	Race Lagoon	OLF	76																															
				74																														
					70																													
						75																												
R08	Pratts Bluff	OLF	63																															
				61																														
					58																													
						63																												

Figure A7.4-1. Estimated Aircraft DNL at POIs for the High-Tempo FCLP Year, Alternative 2 (continued)





**Figure A7.4-1. Estimated Aircraft DNL at POIs for the High-Tempo FCLP Year, Alternative 2 (continued)**

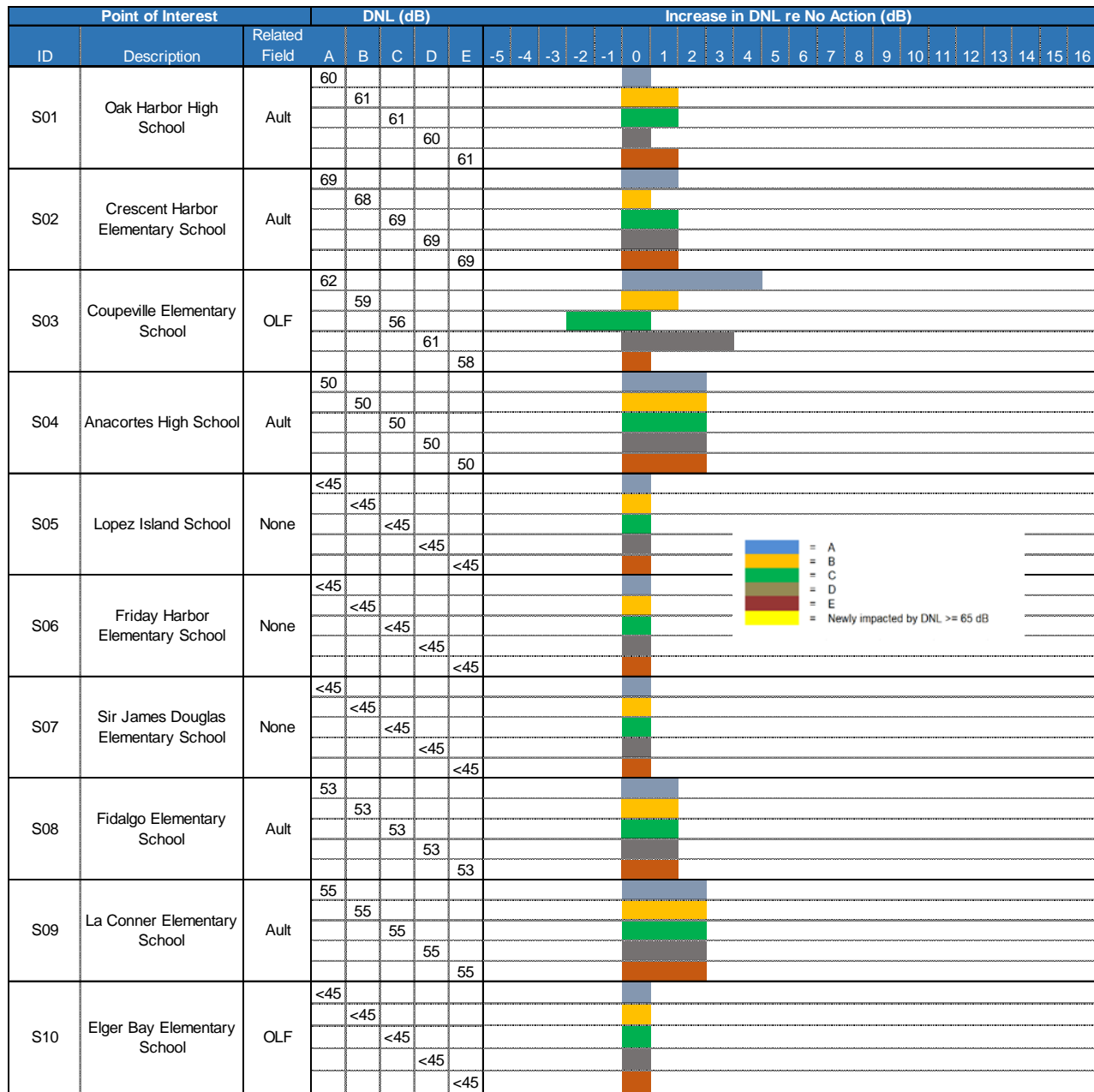


Figure A7.4-1. Estimated Aircraft DNL at POIs for the High-Tempo FCLP Year, Alternative 2 (concluded)

**Table A7.4-2 Estimated Potential Hearing Loss for the High-Tempo FCLP Year, Alternative 2A**

Band of Leq(24) (dB)	Average NIPTS (dB) <sup>(1)</sup>	10 <sup>th</sup> Percentile NIPTS (dB) <sup>(1)</sup>	Estimated Population				Change in population re No Action			
			Ault Field (on-Station)	Ault Field (off-Station)	OLF Coupeville (off-Station)	TOTAL	Ault Field (on-Station)	Ault Field (off-Station)	OLF Coupeville (off-Station)	TOTAL
74-75	0.5	3.5	-	-	-	-	-	-	-	-
75-76	1.0	4.0	-	-	76	76	-	(0)	44	44
76-77	1.0	4.5	-	127	180	307	-	(28)	134	106
77-78	1.5	5.0	-	275	157	432	-	(1)	112	110
78-79	2.0	5.5	-	160	98	258	-	(9)	74	65
79-80	2.5	6.0	-	138	80	218	-	36	73	108
80-81	3.0	7.0	-	79	70	149	-	4	69	73
81-82	3.5	8.0	-	65	62	127	-	14	62	76
82-83	4.0	9.0	-	49	54	102	-	10	54	64
83-84	4.5	10.0	-	36	63	100	-	0	63	64
84-85	5.5	11.0	-	28	59	88	-	16	59	75
85-86	6.0	12.0	-	10	1	11	-	0	1	1
86-87	7.0	13.5	-	9	0	9	-	2	0	2
87-88	7.5	15.0	-	6	0	6	-	2	0	2
88-89	8.5	16.5	-	4	-	4	-	2	-	2
89-90	9.5	18.0	-	1	-	1	-	1	-	1
90-91	10.5	19.5	-	-	-	-	-	-	-	-
91-92	11.5	21.0	-	-	-	-	-	-	-	-

(1) rounded to nearest 0.5 dB

Note: Average NIPTS values greater than 10 dB, and 10th Percentile NIPTS values greater than 12 dB are estimated based on extrapolating available data from EPA guidance (EPA 1982).

**Table A7.4-3 Estimated Potential Hearing Loss for the High-Tempo FCLP Year, Alternative 2B**

Band of $L_{eq(24)}$ (dB)	Average NIPTS (dB) <sup>(1)</sup>	10 <sup>th</sup> Percentile NIPTS (dB) <sup>(1)</sup>	Estimated Population				Change in population re No Action			
			Ault Field (on-Station)	Ault Field (off-Station)	OLF Coupeville (off-Station)	TOTAL	Ault Field (on-Station)	Ault Field (off-Station)	OLF Coupeville (off-Station)	TOTAL
74-75	0.5	3.5	-	-	-	-	-	-	-	-
75-76	1.0	4.0	-	2	27	29	-	2	(6)	(4)
76-77	1.0	4.5	114	337	101	552	114	182	55	351
77-78	1.5	5.0	-	353	78	431	-	76	33	109
78-79	2.0	5.5	-	260	69	329	-	91	45	136
79-80	2.5	6.0	-	171	62	234	-	70	55	124
80-81	3.0	7.0	-	104	56	160	-	29	55	84
81-82	3.5	8.0	-	73	64	137	-	22	64	86
82-83	4.0	9.0	-	62	49	111	-	23	49	72
83-84	4.5	10.0	-	38	1	38	-	2	1	2
84-85	5.5	11.0	-	27	0	27	-	15	0	15
85-86	6.0	12.0	-	24	0	24	-	14	0	14
86-87	7.0	13.5	-	9	-	9	-	2	-	2
87-88	7.5	15.0	-	7	-	7	-	3	-	3
88-89	8.5	16.5	-	5	-	5	-	3	-	3
89-90	9.5	18.0	-	2	-	2	-	2	-	2
90-91	10.5	19.5	-	-	-	-	-	-	-	-
91-92	11.5	21.0	-	-	-	-	-	-	-	-

(1) rounded to nearest 0.5 dB

Note: Average NIPTS values greater than 10 dB, and 10th Percentile NIPTS values greater than 12 dB are estimated based on extrapolating available data from EPA guidance (EPA 1982).

**Table A7.4-4 Estimated Potential Hearing Loss for the High-Tempo FCLP Year, Alternative 2C**

Band of Leq(24) (dB)	Average NIPTS (dB) <sup>(1)</sup>	10 <sup>th</sup> Percentile NIPTS (dB) <sup>(1)</sup>	Estimated Population				Change in population re No Action			
			Ault Field (on-Station)	Ault Field (off-Station)	OLF Coupeville (off-Station)	TOTAL	Ault Field (on-Station)	Ault Field (off-Station)	OLF Coupeville (off-Station)	TOTAL
74-75	0.5	3.5	-	-	-	-	-	-	-	-
75-76	1.0	4.0	-	4	36	40	-	4	4	8
76-77	1.0	4.5	195	293	55	543	195	139	8	342
77-78	1.5	5.0	2	458	64	524	2	181	18	201
78-79	2.0	5.5	-	307	55	361	-	137	31	168
79-80	2.5	6.0	-	271	1	272	-	169	(6)	163
80-81	3.0	7.0	-	146	0	147	-	71	(1)	70
81-82	3.5	8.0	-	82	0	82	-	31	(0)	31
82-83	4.0	9.0	-	66	-	66	-	27	-	27
83-84	4.5	10.0	-	42	-	42	-	6	-	6
84-85	5.5	11.0	-	30	-	30	-	17	-	17
85-86	6.0	12.0	-	29	-	29	-	19	-	19
86-87	7.0	13.5	-	10	-	10	-	3	-	3
87-88	7.5	15.0	-	8	-	8	-	4	-	4
88-89	8.5	16.5	-	5	-	5	-	3	-	3
89-90	9.5	18.0	-	3	-	3	-	3	-	3
90-91	10.5	19.5	-	-	-	-	-	-	-	-
91-92	11.5	21.0	-	-	-	-	-	-	-	-

(1) rounded to nearest 0.5 dB

Note: Average NIPTS values greater than 10 dB, and 10th Percentile NIPTS values greater than 12 dB are estimated based on extrapolating available data from EPA guidance (EPA 1982).

**Table A7.4-5 Estimated Potential Hearing Loss for the High-Tempo FCLP Year, Alternative 2D**

Band of Leq(24) (dB)	Average NIPTS (dB) <sup>(1)</sup>	10 <sup>th</sup> Percentile NIPTS (dB) <sup>(1)</sup>	Estimated Population				Change in population re No Action			
			Ault Field (on-Station)	Ault Field (off-Station)	OLF Coupeville (off-Station)	TOTAL	Ault Field (on-Station)	Ault Field (off-Station)	OLF Coupeville (off-Station)	TOTAL
74-75	0.5	3.5	-	-	-	-	-	-	-	-
75-76	1.0	4.0	-	0	72	72	-	(0)	39	39
76-77	1.0	4.5	-	149	170	320	-	(5)	124	119
77-78	1.5	5.0	-	317	113	430	-	40	67	108
78-79	2.0	5.5	-	198	88	286	-	29	64	93
79-80	2.5	6.0	-	144	74	218	-	42	67	109
80-81	3.0	7.0	-	89	64	153	-	13	63	76
81-82	3.5	8.0	-	70	57	127	-	18	57	75
82-83	4.0	9.0	-	49	60	109	-	11	60	71
83-84	4.5	10.0	-	37	80	117	-	1	80	81
84-85	5.5	11.0	-	31	3	34	-	18	3	22
85-86	6.0	12.0	-	11	0	11	-	1	0	2
86-87	7.0	13.5	-	9	0	9	-	2	0	2
87-88	7.5	15.0	-	6	0	6	-	2	0	2
88-89	8.5	16.5	-	4	-	4	-	2	-	2
89-90	9.5	18.0	-	1	-	1	-	1	-	1
90-91	10.5	19.5	-	-	-	-	-	-	-	-
91-92	11.5	21.0	-	-	-	-	-	-	-	-

(1) rounded to nearest 0.5 dB

Note: Average NIPTS values greater than 10 dB, and 10th Percentile NIPTS values greater than 12 dB are estimated based on extrapolating available data from EPA guidance (EPA 1982).

**Table A7.4-6 Estimated Potential Hearing Loss for the High-Tempo FCLP Year, Alternative 2E**

Band of L <sub>eq(24)</sub> (dB)	Average NIPTS (dB) <sup>(1)</sup>	10 <sup>th</sup> Percentile NIPTS (dB) <sup>(1)</sup>	Estimated Population				Change in population re No Action			
			Ault Field (on-Station)	Ault Field (off-Station)	OLF Coupeville (off-Station)	TOTAL	Ault Field (on-Station)	Ault Field (off-Station)	OLF Coupeville (off-Station)	TOTAL
74-75	0.5	3.5	-	-	-	-	-	-	-	-
75-76	1.0	4.0	-	2	43	45	-	2	11	12
76-77	1.0	4.5	102	331	67	500	102	176	21	299
77-78	1.5	5.0	-	400	60	460	-	123	14	138
78-79	2.0	5.5	-	298	57	355	-	129	33	162
79-80	2.5	6.0	-	237	66	303	-	135	59	194
80-81	3.0	7.0	-	130	37	168	-	55	36	91
81-82	3.5	8.0	-	79	1	80	-	28	1	29
82-83	4.0	9.0	-	64	0	64	-	25	0	26
83-84	4.5	10.0	-	39	0	39	-	3	0	3
84-85	5.5	11.0	-	29	-	29	-	17	-	17
85-86	6.0	12.0	-	26	-	26	-	17	-	17
86-87	7.0	13.5	-	10	-	10	-	3	-	3
87-88	7.5	15.0	-	8	-	8	-	3	-	3
88-89	8.5	16.5	-	5	-	5	-	3	-	3
89-90	9.5	18.0	-	2	-	2	-	2	-	2
90-91	10.5	19.5	-	-	-	-	-	-	-	-
91-92	11.5	21.0	-	-	-	-	-	-	-	-

(1) rounded to nearest 0.5 dB

Note: Average NIPTS values greater than 10 dB, and 10th Percentile NIPTS values greater than 12 dB are estimated based on extrapolating available data from EPA guidance (EPA 1982).

**Table A7.4-7 Average Indoor Nightly Probability of Awakening at Applicable POIs for the High-Tempo FCLP Year, Alternative 2**

Point of Interest				Annual Average Nightly (2200-0700) Probability of Awakening (%) <sup>(1)</sup>																			
Type	ID	Description	Related Field	Alt2A		Change from No Action		Alt2B		Change from No Action		Alt2C		Change from No Action		Alt2D		Change from No Action		Alt2E		Change from No Action	
				Windows Open	Windows Closed	Windows Open	Windows Closed	Windows Open	Windows Closed	Windows Open	Windows Closed	Windows Open	Windows Closed	Windows Open	Windows Closed	Windows Open	Windows Closed	Windows Open	Windows Closed	Windows Open	Windows Closed	Windows Open	Windows Closed
Residential	R01	Sullivan Rd	Ault	68%	52%	6%	6%	73%	57%	11%	11%	76%	60%	14%	14%	69%	53%	7%	7%	74%	59%	12%	13%
	R02	Salal St. and N. Northgate Dr	Ault	50%	36%	6%	5%	54%	39%	10%	8%	57%	42%	13%	11%	51%	37%	7%	6%	56%	41%	12%	10%
	R03	Central Whidbey	Ault	20%	11%	3%	2%	23%	12%	6%	3%	24%	13%	7%	4%	21%	11%	4%	2%	23%	12%	6%	3%
	R04	Pull and Be Damned Point	Ault	26%	13%	5%	4%	27%	13%	6%	4%	28%	13%	7%	4%	26%	12%	5%	3%	28%	13%	7%	4%
	R05	Snee-Oosh Point	Ault	21%	8%	5%	3%	22%	8%	6%	3%	23%	8%	7%	3%	21%	8%	5%	3%	23%	8%	7%	3%
	R06	Admirals Dr and Byrd Dr	OLF	39%	28%	30%	22%	25%	17%	16%	11%	13%	8%	4%	2%	35%	25%	26%	19%	18%	12%	9%	6%
	R07	Race Lagoon	OLF	19%	8%	14%	6%	13%	5%	8%	3%	8%	3%	3%	1%	17%	8%	12%	6%	10%	4%	5%	2%
	R08	Pratts Bluff	OLF	14%	9%	10%	7%	9%	5%	5%	3%	5%	3%	1%	1%	13%	8%	9%	6%	6%	4%	2%	2%
	R09	Cox Rd and Island Ridge Way	OLF	11%	8%	8%	6%	7%	5%	4%	3%	3%	2%	-	-	10%	7%	7%	5%	5%	3%	2%	1%
	R10	Skyline	None	8%	3%	2%	1%	8%	3%	2%	1%	10%	3%	4%	1%	9%	3%	3%	1%	10%	3%	4%	1%
	R11	Sequim	None	-	-	-	-	-	-	-	-	-	-	-	-	-	-	-	-	-	-	-	-
	R12	Port Angeles	None	1%	0%	1%	-	1%	0%	1%	-	0%	0%	-	-	1%	0%	1%	-	0%	0%	-	-
	R13	Beverly Beach, Freeland	OLF	6%	-	4%	-	4%	-	2%	-	2%	-	-	-	5%	-	3%	-	3%	-	1%	-
	R14	E Sleeper Rd & Slumber Ln	Ault	45%	31%	5%	3%	49%	35%	9%	7%	52%	38%	12%	10%	46%	32%	6%	4%	51%	37%	11%	9%
	R15	Long Point Manor	OLF	23%	12%	12%	8%	18%	8%	7%	4%	14%	4%	3%	-	22%	11%	11%	7%	16%	6%	5%	2%
	R16	Rocky Point Heights	OLF	11%	4%	1%	1%	12%	4%	2%	1%	13%	3%	3%	-	12%	4%	2%	1%	13%	3%	3%	-
	R17	Port Townsend	None	1%	-	-	-	1%	-	-	-	0%	-	-	-1%	-	1%	-	-	1%	-	-	-
	R18	Marrowstone Island (Nordland)	None	-	-	-	-	-	-	-	-	0%	-	-	-	-	-	-	-	0%	-	-	-
	R19	Island Transit Offices, Coupeville	OLF	32%	21%	22%	16%	22%	13%	12%	8%	13%	6%	3%	1%	29%	18%	19%	13%	17%	9%	7%	4%
R20	South Lopez Island (Agate Beach)	None	4%	1%	1%	-	3%	1%	-	-	3%	1%	-	-	3%	1%	-	-	3%	1%	-	-	
School (near residential)	S01	Oak Harbor High School	Ault	26%	15%	4%	2%	28%	17%	6%	4%	30%	19%	8%	6%	26%	16%	4%	3%	29%	18%	7%	5%
	S02	Crescent Harbor Elementary School	Ault	27%	16%	4%	3%	30%	18%	7%	5%	31%	19%	8%	6%	28%	17%	5%	4%	31%	19%	8%	6%
	S03	Coupeville Elementary School	OLF	17%	10%	12%	7%	11%	6%	6%	3%	6%	3%	1%	-	15%	9%	10%	6%	8%	4%	3%	1%
	S04	Anacortes High School	Ault	3%	1%	1%	-	3%	1%	1%	-	3%	1%	1%	-	3%	1%	1%	-	3%	1%	1%	-
	S05	Lopez Island School	None	-	-	-	-	-	-	-	-	-	-	-	-	-	-	-	-	-	-	-	-
	S06	Friday Harbor Elementary School	None	-	-	-	-	-	-	-	-	-	-	-	-	-	-	-	-	-	-	-	-
	S07	Sir James Douglas Elementary School	None	-	-	-	-	-	-	-	-	-	-	-	-	-	-	-	-	-	-	-	-
	S08	Fidalgo Elementary School	Ault	9%	3%	2%	1%	10%	3%	3%	1%	10%	3%	3%	1%	10%	3%	3%	1%	10%	3%	3%	1%
	S09	La Conner Elementary School	Ault	11%	5%	3%	2%	11%	5%	3%	2%	10%	5%	2%	2%	11%	5%	3%	2%	11%	5%	3%	2%
	S10	Elger Bay Elementary School	OLF	-	-	-	-	-	-	-	-	-	-	-	-	-	-	-	-	-	-	-	-

(1) assumes 15 dB and 25 dB of Noise Level Reductions for windows open and closed, respectively.

Table A7.4-8 Indoor Speech Interference for the High-Tempo FCLP Year, Alternative 2

Point of Interest				Annual Average Daily Indoor Daytime (0700-2200) Events per Hour <sup>(1)</sup>																			
				Alt2A		Change from No Action		Alt2B		Change from No Action		Alt2C		Change from No Action		Alt2D		Change from No Action		Alt2E		Change from No Action	
Type	ID	Description	Related Field	Windows Open	Windows Closed	Windows Open	Windows Closed	Windows Open	Windows Closed	Windows Open	Windows Closed	Windows Open	Windows Closed	Windows Open	Windows Closed	Windows Open	Windows Closed	Windows Open	Windows Closed	Windows Open	Windows Closed	Windows Open	Windows Closed
Residential	R01	Sullivan Rd.	Ault	9	9	+1	+1	10	10	+2	+2	10	10	+2	+2	10	10	+2	+2	10	10	+2	+2
	R02	Salal St. and N. Northgate Dr	Ault	9	9	+1	+1	10	10	+2	+2	10	10	+2	+2	9	9	+1	+1	10	10	+2	+2
	R03	Central Whidbey	Ault	5	-	-	-	6	-	+1	-	6	-	+1	-	5	-	-	-	6	-	+1	-
	R04	Pull and Be Damned Point	Ault	3	1	+1	-	3	2	+1	+1	3	1	+1	-	3	1	+1	-	3	1	+1	-
	R05	Snee-Cosh Point	Ault	2	1	-	-	2	1	-	-	2	1	-	-	2	1	-	-	2	1	-	-
	R06	Admirals Dr and Byrd Dr	OLF	2	2	+2	+2	1	1	+1	+1	1	-	+1	-	2	2	+2	+2	1	1	+1	+1
	R07	Race Lagoon	OLF	2	1	+1	+1	1	1	-	+1	1	-	-	-	2	1	+1	+1	1	-	-	-
	R08	Pratts Bluff	OLF	2	1	+2	+1	1	1	+1	+1	1	-	+1	-	2	1	+2	+1	1	-	+1	-
	R09	Cox Rd and Island Ridge Way	OLF	1	-	+1	-	1	-	+1	-	-	-	-	-	1	-	+1	-	-	-	-	-
	R10	Skyline	None	-	-	-	-	1	-	+1	-	1	-	+1	-	1	-	+1	-	1	-	+1	-
	R11	Sequim	None	-	-	-	-	-	-	-	-	-	-	-	-	-	-	-	-	-	-	-	-
	R12	Port Angeles	None	-	-	-	-	-	-	-	-	-	-	-	-	-	-	-	-	-	-	-	-
	R13	Beverly Beach, Freeland	OLF	-	-	-	-	-	-	-	-	-	-	-	-	-	-	-	-	-	-	-	-
	R14	E Sleeper Rd & Slumber Ln	Ault	9	8	+1	+1	10	9	+2	+2	10	9	+2	+2	9	8	+1	+1	10	9	+2	+2
	R15	Long Point Manor	OLF	3	2	+2	+1	2	1	+1	-	1	1	-	-	3	2	+2	+1	2	1	+1	-
	R16	Rocky Point Heights	OLF	2	1	-	-	2	1	-	-	2	1	-	-	2	1	-	-	2	1	-	-
	R17	Port Townsend	None	-	-	-	-	-	-	-	-	-	-	-	-	-	-	-	-	-	-	-	-
	R18	Marrowstone Island (Nordland)	None	-	-	-	-	-	-	-	-	-	-	-	-	-	-	-	-	-	-	-	-
	R19	Island Transit Offices, Coupeville	OLF	2	2	+1	+1	2	1	+1	-	1	1	-	-	2	2	+1	+1	1	1	-	-
	R20	South Lopez Island (Agate Beach)	None	-	-	-	-	-	-	-	-	-	-	-	-	-	-	-	-	-	-	-	-
School (near residential)	S01	Oak Harbor High School	Ault	7	3	+1	+1	7	3	+1	+1	8	3	+2	+1	7	3	+1	+1	7	3	+1	+1
	S02	Crescent Harbor Elementary	Ault	6	2	+1	-	6	3	+1	+1	7	3	+2	+1	6	2	+1	-	6	3	+1	+1
	S03	Coupeville Elementary	OLF	2	1	+1	+1	2	1	+1	+1	1	-	-	-	2	1	+1	+1	1	1.00	-	+1
	S04	Anacortes High School	Ault	-	-	-	-	-	-	-	-	-	-	-	-	-	-	-	-	-	-	-	-
	S05	Lopez Island School	None	-	-	-	-	-	-	-	-	-	-	-	-	-	-	-	-	-	-	-	-
	S06	Friday Harbor Elementary	None	-	-	-	-	-	-	-	-	-	-	-	-	-	-	-	-	-	-	-	-
	S07	Sir James Douglas	None	-	-	-	-	-	-	-	-	-	-	-	-	-	-	-	-	-	-	-	-
	S08	Fidalgo Elementary School	Ault	-	-	-	-	-	-	-	-	-	-	-	-	-	-	-	-	-	-	-	-
	S09	La Conner Elementary	Ault	1	1	-	+1	1	1	-	+1	1	-	-	1	-	-	-	-	1	-	-	-
	S10	Elger Bay Elementary	OLF	-	-	-	-	-	-	-	-	-	-	-	-	-	-	-	-	-	-	-	-



**Table A7.4-9 Classroom Learning Interference for the High-Tempo FCLP Year, Alternative 2**

Representative School Location				Alt2A						Change from No Action			
				Outdoor	Indoor <sup>(1)</sup>				Outdoor	Indoor <sup>(1)</sup>			
					Windows Open	Events per Hour <sup>(2)</sup>	Windows Closed	Events per Hour <sup>(2)</sup>		Windows Open	Events per Hour <sup>(2)</sup>	Windows Closed	Events per Hour <sup>(2)</sup>
Type	ID	Description	Related Field	L <sub>eq(8h)</sub> (dB)	L <sub>eq(8h)</sub> (dB)	per Hour <sup>(2)</sup>	L <sub>eq(8h)</sub> (dB)	per Hour <sup>(2)</sup>	L <sub>eq(8h)</sub> (dB)	L <sub>eq(8h)</sub> (dB)	per Hour <sup>(2)</sup>	L <sub>eq(8h)</sub> (dB)	per Hour <sup>(2)</sup>
School Surrogate	R03	Central Whidbey	Ault	58	<45	5	<45	-	+1	+1	+1	+1	-
	R11	Sequim	None	<45	<45	-	<45	-	+2	+2	-	+2	-
School	S01	Oak Harbor High School	Ault	57	<45	6	<45	2	-	-	+1	-	-
	S02	Crescent Harbor Elementary School	Ault	68	53	5	<45	2	+1	+1	+1	+1	-
	S03	Coupeville Elementary School	OLF	57	<45	2	<45	1	+5	+5	+2	+5	+1
	S04	Anacortes High School	Ault	47	<45	-	<45	-	+1	+1	-	+1	-
	S05	Lopez Island School	None	<45	<45	-	<45	-	+1	+1	-	+1	-
	S06	Friday Harbor Elementary School	None	<45	<45	-	<45	-	+1	-	-	-	-
	S07	Sir James Douglas Elementary School	None	<45	<45	-	<45	-	-3	-3	-	-3	-
	S08	Fidalgo Elementary School	Ault	50	<45	-	<45	-	+1	+1	-	+1	-
	S09	La Conner Elementary School	Ault	52	<45	1	<45	-	+2	+2	-	+2	-
	S10	Elger Bay Elementary School	OLF	<45	<45	-	<45	-	+1	+1	-	+1	-
Number of Sites Exceeding 1 Intrusive Event per Hour						4		2			-		-
Minimum Number of Intrusive Events per Hour if Exceeding 1						2		2			-		-
Maximum Number of Intrusive Events per Hour if Exceeding 1						6		2			-		-
<b>Point of Interest</b>				<b>Alt2B</b>						<b>Change from No Action</b>			
School Surrogate	R03	Central Whidbey	Ault	58	<45	5	<45	-	+1	+1	+1	+1	-
	R11	Sequim	None	<45	<45	-	<45	-	+1	+1	-	+1	-
School	S01	Oak Harbor High School	Ault	58	<45	7	<45	3	+1	+1	+2	+1	+1
	S02	Crescent Harbor Elementary School	Ault	68	53	6	<45	2	+1	+1	+2	+1	-
	S03	Coupeville Elementary School	OLF	55	<45	1	<45	1	+3	+3	+1	+3	+1
	S04	Anacortes High School	Ault	47	<45	-	<45	-	+1	+1	-	+1	-
	S05	Lopez Island School	None	<45	<45	-	<45	-	+1	+1	-	+1	-
	S06	Friday Harbor Elementary School	None	<45	<45	-	<45	-	-	-	-	-	-
	S07	Sir James Douglas Elementary School	None	<45	<45	-	<45	-	-3	-3	-	-3	-
	S08	Fidalgo Elementary School	Ault	50	<45	-	<45	-	+1	+1	-	+1	-
	S09	La Conner Elementary School	Ault	52	<45	1	<45	-	+2	+2	-	+2	-
	S10	Elger Bay Elementary School	OLF	<45	<45	-	<45	-	+1	+1	-	+1	-
Number of Sites Exceeding 1 Intrusive Event per Hour						3		2			2		-
Minimum Number of Intrusive Events per Hour if Exceeding 1						5		2			+2		-
Maximum Number of Intrusive Events per Hour if Exceeding 1						7		3			+2		-
<b>Point of Interest</b>				<b>Alt2C</b>						<b>Change from No Action</b>			
School Surrogate	R03	Central Whidbey	Ault	59	<45	6	<45	-	+2	+2	+2	+2	-
	R11	Sequim	None	<45	<45	-	<45	-	+2	+2	-	+2	-
School	S01	Oak Harbor High School	Ault	58	<45	7	<45	3	+1	+1	+2	+1	+1
	S02	Crescent Harbor Elementary School	Ault	69	54	6	<45	3	+2	+2	+2	+2	+1
	S03	Coupeville Elementary School	OLF	51	<45	1	<45	-	-1	-1	+1	-1	-
	S04	Anacortes High School	Ault	47	<45	-	<45	-	+1	+1	-	+1	-
	S05	Lopez Island School	None	<45	<45	-	<45	-	+1	+1	-	+1	-
	S06	Friday Harbor Elementary School	None	<45	<45	-	<45	-	+1	+1	-	+1	-
	S07	Sir James Douglas Elementary School	None	<45	<45	-	<45	-	-3	-3	-	-3	-
	S08	Fidalgo Elementary School	Ault	50	<45	-	<45	-	+1	+1	-	+1	-
	S09	La Conner Elementary School	Ault	51	<45	1	<45	-	+1	+1	-	+1	-
	S10	Elger Bay Elementary School	OLF	<45	<45	-	<45	-	+1	+1	-	+1	-
Number of Sites Exceeding 1 Intrusive Event per Hour						3		2			3		-
Minimum Number of Intrusive Events per Hour if Exceeding 1						6		3			+2		-
Maximum Number of Intrusive Events per Hour if Exceeding 1						7		3			+2		-

Notes:

(1) assumes 15 dB and 25 dB of Noise Level Reductions for windows open and closed, respectively.

**Table A7.4-9 Classroom Learning Interference for the High-Tempo FCLP Year, Alternative 2 (concluded)**

Representative School Location				Alt2D						Change from No Action					
				Outdoor		Indoor <sup>(1)</sup>				Outdoor		Indoor <sup>(1)</sup>			
						Windows Open		Windows Closed				Windows Open		Windows Closed	
Type	ID	Description	Related Field	L <sub>eq(8h)</sub> (dB)	L <sub>eq(8h)</sub> (dB)	Events per Hour <sup>(2)</sup>	L <sub>eq(8h)</sub> (dB)	Events per Hour <sup>(2)</sup>	L <sub>eq(8h)</sub> (dB)	Events per Hour <sup>(2)</sup>	L <sub>eq(8h)</sub> (dB)	Events per Hour <sup>(2)</sup>			
School Surrogate	R03	Central Whidbey	Ault	58	<45	5	<45	-	+1	+1	+1	-			
	R11	Sequim	None	<45	<45	-	<45	-	+2	+2	-	+2			
School	S01	Oak Harbor High School	Ault	57	<45	6	<45	2	-	-	+1	-			
	S02	Crescent Harbor Elementary School	Ault	68	53	5	<45	2	+1	+1	+1	-			
	S03	Coupeville Elementary School	OLF	57	<45	2	<45	1	+5	+5	+2	+5			
	S04	Anacortes High School	Ault	47	<45	-	<45	-	+1	+1	-	+1			
	S05	Lopez Island School	None	<45	<45	-	<45	-	+1	+1	-	+1			
	S06	Friday Harbor Elementary School	None	<45	<45	-	<45	-	+1	-	-	-			
	S07	Sir James Douglas Elementary School	None	<45	<45	-	<45	-	+1	+1	-	+1			
	S08	Fidalgo Elementary School	Ault	50	<45	-	<45	-	+1	+1	-	+1			
	S09	La Conner Elementary School	Ault	52	<45	1	<45	-	+2	+2	-	+2			
	S10	Elger Bay Elementary School	OLF	<45	<45	-	<45	-	+1	+1	-	+1			
Number of Sites Exceeding 1 Intrusive Event per Hour						4		2			1				
Minimum Number of Intrusive Events per Hour if Exceeding 1						5		2			+2				
Maximum Number of Intrusive Events per Hour if Exceeding 1						6		2			+2				
Point of Interest				Alt2E						Change from No Action					
School Surrogate	R03	Central Whidbey	Ault	59	<45	6	<45	-	+2	+2	+2	+2			
	R11	Sequim	None	<45	<45	-	<45	-	+2	+2	-	+2			
School	S01	Oak Harbor High School	Ault	58	<45	7	<45	3	+1	+1	+2	+1			
	S02	Crescent Harbor Elementary School	Ault	69	54	6	<45	2	+2	+2	+2	-			
	S03	Coupeville Elementary School	OLF	53	<45	1	<45	-	+1	+1	+1	-			
	S04	Anacortes High School	Ault	47	<45	-	<45	-	+1	+1	-	+1			
	S05	Lopez Island School	None	<45	<45	-	<45	-	+1	+1	-	+1			
	S06	Friday Harbor Elementary School	None	<45	<45	-	<45	-	+1	-	-	-			
	S07	Sir James Douglas Elementary School	None	<45	<45	-	<45	-	+1	+1	-	+1			
	S08	Fidalgo Elementary School	Ault	50	<45	-	<45	-	+1	+1	-	+1			
	S09	La Conner Elementary School	Ault	51	<45	1	<45	-	+1	+1	-	+1			
	S10	Elger Bay Elementary School	OLF	<45	<45	-	<45	-	+1	+1	-	+1			
Number of Sites Exceeding 1 Intrusive Event per Hour						3		2			3				
Minimum Number of Intrusive Events per Hour if Exceeding 1						6		2			+2				
Maximum Number of Intrusive Events per Hour if Exceeding 1						7		3			+2				

Notes:

(1) assumes 15 dB and 25 dB of Noise Level Reductions for windows open and closed, respectively.

Table A7.4-10 Recreational Speech Interference for the High-Tempo FCLP Year, Alternative 2

Representative Park Receptor			Annual Average Outdoor Daily Daytime Events per Hour, NA 50 L <sub>max</sub>																				
			Alt2A		Increase re No Action		Alt2B		Increase re No Action		Alt2C		Increase re No Action		Alt2D		Increase re No Action		Alt2E		Increase re No Action		
Type	ID	Description	Day	Night	Day	Night	Day	Night	Day	Night	Day	Night	Day	Night	Day	Night	Day	Night	Day	Night	Day	Night	
Park	P01	Joseph Whidbey State Park	9	2	+1	-	9	2	+1	-	10	3	+2	+1	9	2	+1	-	10	2	+2	-	
	P02	Deception Pass State Park	9	2	+1	-	10	2	+1	-	10	3	+2	+1	9	2	+1	-	10	2	+2	-	
	P03	Duguala State Park	9	2	+1	-	9	2	+1	-	10	3	+2	+1	9	2	+1	-	10	2	+2	-	
	P04	Baseball Field (Ebey's Landing National Historical Reserve)	5	1	+2	-	4	1	+1	-	3	1	-	-	5	1	+2	-	4	1	+1	-	
	P05	Ebey's Landing State Park	4	1	+2	+1	3	1	+1	+1	3	1	+1	+1	4	1	+2	+1	3	1	+1	+1	
	P06	Fort Casey State Park	3	1	+2	+1	2	1	+1	+1	1	-	-	-	3	1	+2	+1	2	-	+1	-	
	P07	Cama Beach State Park	5	1	+2	+1	4	1	+1	+1	4	1	+1	+1	5	1	+2	+1	4	1	+1	+1	
	P08	Port Townsend	2	1	+1	+1	2	1	+1	+1	1	-	-	-	2	1	+1	+1	1	-	-	-	
	P09	Moran State Park	-	-	-	-	-	-	-	-	-	-	-	-	-	-	-	-	-	-	-	-	-
	P10	San Juan Islands National Monument	8	2	+1	-	9	2	+2	-	9	2	+2	-	8	2	+1	-	9	2	+2	-	
	P11	San Juan Island Visitors Center	-	-	-	-	-	-	-	-	-	-	-	-	-	-	-	-	-	-	-	-	-
	P12	Cap Sante Park	1	-	+1	-	1	-	+1	-	1	-	+1	-	1	-	+1	-	1	-	+1	-	
	P13	Lake Campbell	5	1	+1	-	5	1	+1	-	6	1	+2	-	5	1	+1	-	6	1	+2	-	
	P14	Spencer Spit State Park	-	-	-	-	-	-	-	-	-	-	-	-	-	-	-	-	-	-	-	-	-
	P15	Pioneer Park	5	1	+1	-	4	1	-	-	4	1	-	-	5	1	+1	-	4	1	-	-	
	P16	Marrowstone Island (Fort Flagler)	2	1	+2	+1	1	-	+1	-	-	-	-	-	1	1	+2	+1	1	-	+1	-	
EBLA001	Reuble Farm	4	1	+2	+1	3	1	+1	+1	2	-	-	-	4	1	+2	+1	3	1	+1	+1		
EBLA002	Ferry House	4	1	+2	+1	3	1	+1	+1	2	-	-	-	4	1	+2	+1	3	1	+1	+1		
Residential	R01	Sullivan Rd	10	2	+2	-	10	2	+2	-	11	3	+3	+1	10	2	+2	-	10	3	+2	+1	
	R02	Sallal St. and N. Northgate Dr	10	2	+1	-	10	2	+2	-	11	3	+2	+1	10	2	+2	-	10	3	+2	+1	
	R03	Central Whidbey	9	2	+2	-	9	2	+2	-	10	2	+3	+1	9	2	+2	-	9	2	+3	+1	
	R04	Pull and Be Damned Point	9	2	+2	-	9	2	+2	-	10	3	+3	+1	9	2	+2	-	10	2	+3	-	
	R05	Snee-Oosh Point	8	2	+1	-	9	2	+2	-	9	2	+2	-	8	2	+1	-	9	2	+2	-	
	R06	Admirals Dr and Byrd Dr	3	1	+2	+1	2	1	+1	+1	1	-	-	-	3	1	+2	+1	2	-	+1	-	
	R07	Race Lagoon	5	1	+2	-	4	1	+1	-	3	1	-	-	5	1	+2	-	3	1	-	-	
	R08	Pratts Bluff	3	1	+2	+1	2	1	+1	+1	2	-	+1	-	3	1	+2	+1	2	-	+1	-	
	R09	Cox Rd and Island Ridge Way	2	1	+1	+1	2	1	+1	+1	1	-	-	-	2	1	+1	+1	1	-	-	-	
	R10	Skyline	4	1	-	-	4	1	-	-	5	1	+1	-	4	1	-	-	5	1	+1	-	
	R11	Sequim	1	-	+1	-	1	-	+1	-	1	-	+1	-	1	-	+1	-	1	-	+1	-	
	R12	Port Angeles	1	-	-	-	1	-	-	-	1	-	-	-	1	-	-	-	1	-	-	-	
	R13	Beverly Beach, Freeland	1	-	+1	-	1	-	+1	-	-	-	-	-	1	-	+1	-	-	-	-	-	
	R14	E Sleeper Rd & Slumber Ln	10	2	+2	-	10	2	+2	-	11	3	+3	+1	10	2	+2	-	10	3	+2	+1	
	R15	Long Point Manor	9	2	+2	-	9	2	+2	-	9	2	+1	-	9	2	+2	-	9	2	+1	-	
	R16	Rocky Point Heights	5	1	+1	-	5	2	+1	-	6	2	+1	-	5	1	+1	-	5	2	+1	-	
	R17	Port Townsend	2	1	+1	+1	1	-	-	-	-	-	-	-	1	1	-	+1	1	-	-	-	
	R18	Marrowstone Island (Nordland)	-	-	-	-	-	-	-	-	-	-	-	-	-	-	-	-	-	-	-	-	
R19	Island Transit Offices, Coupeville	5	1	+2	-	4	1	+1	-	3	1	-	-	5	1	+2	-	4	1	+1	-		
R20	South Lopez Island (Agate Beach)	4	1	+1	-	4	1	+1	-	4	1	+1	-	4	1	+1	-	4	1	+1	-		
School	S01	Oak Harbor High School	9	2	+1	-	10	2	+2	-	10	3	+2	+1	9	2	+1	-	10	2	+2	-	
	S02	Crescent Harbor Elementary School	9	2	+2	-	9	2	+2	-	10	2	+3	+1	9	2	+2	-	9	2	+2	-	
	S03	Coupeville Elementary School	5	1	+2	-	4	1	+1	-	3	1	-	-	5	1	+2	-	3	1	-	-	
	S04	Anacortes High School	1	-	-	-	1	-	-	-	1	-	-	-	1	-	-	-	1	-	-	-	
	S05	Lopez Island School	-	-	-	-	-	-	-	-	-	-	-	-	-	-	-	-	-	-	-	-	
	S06	Friday Harbor Elementary School	-	-	-	-	-	-	-	-	-	-	-	-	-	-	-	-	-	-	-	-	
	S07	Sir James Douglas Elementary School	-	-	-	-	-	-	-	-	-	-	-	-	-	-	-	-	-	-	-	-	
	S08	Fidalgo Elementary School	5	1	+1	-	5	1	+1	-	5	1	+1	-	5	1	+1	-	5	1	+1	-	
	S09	La Conner Elementary School	4	1	+1	-	4	1	+1	-	4	1	+1	-	4	1	+1	-	4	1	+1	-	
	S10	Elger Bay Elementary School	1	-	-	-	1	-	-	-	1	-	-	-	1	-	-	-	1	-	-	-	

**Table A7.5-1 Estimated Acreage and Population within the DNL Contour Ranges<sup>1</sup> for the NAS Whidbey Island Complex, Alternative 3 (High-Tempo FCLP Year)<sup>2,3</sup>**

	<i>DNL Contour Ranges</i>							
	<i>65 to &lt;70 dB DNL</i>		<i>70 to &lt;75 dB DNL</i>		<i>Greater than or equal to 75 dB DNL</i>		<i>Total</i>	
	<i>Area (acres)</i>	<i>Pop<sup>4</sup></i>	<i>Area (acres)</i>	<i>Pop<sup>4</sup></i>	<i>Area (acres)</i>	<i>Pop<sup>4</sup></i>	<i>Area (acres)</i>	<i>Pop<sup>4</sup></i>
<b><i>Ault Field</i></b>								
<b><i>No Action Alternative</i></b>								
High-Tempo FCLP Year	3,503	3,347	3,260	2,677	5,864	3,530	12,628	9,554
<b><i>Alternative 3</i></b>								
Scenario A (20/80 FCLP split)	4,026 (+523)	3,685 (+338)	3,263 (+3)	1,922 (-755)	5,923 (+59)	3,513 (-17)	13,212 (+584)	9,120 (-434)
Scenario B (50/50 FCLP split)	3,935 (+432)	3,631 (+284)	3,270 (+10)	2,461 (-216)	6,443 (+579)	3,793 (+263)	13,648 (+1,020)	9,886 (+332)
Scenario C (80/20 FCLP split)	3,949 (+446)	3,738 (+391)	3,130 (-130)	2,499 (-178)	6,811 (+947)	3,946 (+416)	13,890 (+1,262)	10,182 (+628)
Scenario D (30/70 FCLP split)	3,996 (+493)	3,672 (+325)	3,258 (-2)	2,223 (-454)	6,165 (+301)	3,661 (+131)	13,419 (+791)	9,555 (+1)
Scenario E (70/30 FCLP split)	3,941 (+438)	3,711 (+364)	3,216 (-44)	2,542 (-135)	6,666 (+802)	3,910 (+380)	13,824 (+1,196)	10,163 (+609)
<b><i>OLF Coupeville</i></b>								
<b><i>No Action Alternative</i></b>								
High-Tempo FCLP Year	3,718	881	3,054	786	637	583	7,409	2,250
<b><i>Alternative 3</i></b>								
Scenario A (20/80 FCLP split)	1,572 (-2,146)	597 (-284)	3,131 (+77)	894 (+108)	5,591 (+4,954)	2,018 (+1,435)	10,294 (+2,885)	3,510 (+1,260)
Scenario B (50/50 FCLP split)	1,887 (-1,831)	493 (-388)	3,461 (+407)	1,080 (+294)	4,247 (+3,610)	1,603 (+1,020)	9,596 (+2,187)	3,176 (+926)
Scenario C (80/20 FCLP split)	3,449 (-269)	1,030 (+149)	3,193 (+139)	1,045 (+259)	1,586 (+949)	725 (+142)	8,397 (+988)	2,800 (+550)
Scenario D (30/70 FCLP split)	1,551 (-2,167)	538 (-343)	3,310 (+256)	961 (+175)	5,239 (+4,602)	1,918 (+1,335)	10,100 (+2,691)	3,417 (+1,167)
Scenario E (70/30 FCLP split)	2,932 (-786)	825 (-56)	3,213 (+159)	1,048 (+262)	2,711 (+2,074)	1,074 (+491)	8,846 (+1,437)	2,947 (+697)
<b><i>NAS Whidbey Island Complex</i></b>								
<b><i>No Action Alternative</i></b>								
High-Tempo FCLP Year	7,221	4,228	6,315	3,463	6,502	4,113	20,037	11,804
<b><i>Alternative 3</i></b>								
Scenario A (20/80 FCLP split)	5,599 (-1,622)	4,283 (+55)	6,394 (+79)	2,816 (-647)	11,513 (+5,011)	5,531 (+1,418)	23,506 (+3,469)	12,631 (+827)
Scenario B (50/50 FCLP split)	5,823 (-1,398)	4,125 (-103)	6,731 (+416)	3,541 (+78)	10,690 (+4,188)	5,396 (+1,283)	23,244 (+3,207)	13,062 (+1,258)
Scenario C (80/20 FCLP split)	7,398 (+177)	4,767 (+539)	6,323 (+8)	3,544 (+81)	8,397 (+1,895)	4,671 (+558)	22,118 (+2,081)	12,982 (+1,178)
Scenario D (30/70 FCLP split)	5,547 (-1,674)	4,209 (-19)	6,569 (+254)	3,184 (-279)	11,404 (+4,902)	5,579 (+1,466)	23,519 (+3,482)	12,972 (+1,168)

**Table A7.5-1 Estimated Acreage and Population within the DNL Contour Ranges<sup>1</sup> for the NAS Whidbey Island Complex, Alternative 3 (High-Tempo FCLP Year)<sup>2,3</sup>**

	<i>DNL Contour Ranges</i>							
	<i>65 to &lt;70 dB DNL</i>		<i>70 to &lt;75 dB DNL</i>		<i>Greater than or equal to 75 dB DNL</i>		<i>Total</i>	
	<i>Area (acres)</i>	<i>Pop<sup>4</sup></i>	<i>Area (acres)</i>	<i>Pop<sup>4</sup></i>	<i>Area (acres)</i>	<i>Pop<sup>4</sup></i>	<i>Area (acres)</i>	<i>Pop<sup>4</sup></i>
Scenario E (70/30 FCLP split)	6,864 (-357)	4,536 (+308)	6,429 (+114)	3,590 (+127)	9,377 (+2,875)	4,985 (+872)	22,670 (+2,633)	13,111 (+1,307)

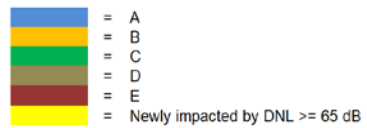
Notes:

- <sup>1</sup> All five scenarios are outlined in Section 2.3.3, where the split represents the percent of FCLPs conducted at Ault Field and OLF Coupeville, respectively (i.e., 20/80 FCLP split = 20 percent of FCLPs at Ault Field and 80 percent of FCLPs at OLF Coupeville).
- <sup>2</sup> Acreage presented does not include areas over water or areas over the NAS Whidbey Island complex.
- <sup>3</sup> The difference between the No Action Alternative and Alternative 1 is noted in parentheses.
- <sup>4</sup> Population counts of people within the DNL contour ranges were computed using 2010 Census block-level data. The percent area of the census block covered by the DNL contour range was applied to the population of that census block to estimate the population within the DNL contour range (e.g., if 25 percent of the census block is within a DNL contour range, then 25 percent of the population is included in the population count). This calculation assumes an even distribution of the population across the census block, and it excludes population on military properties within the DNL contour ranges (NAS Whidbey Island [Ault Field], the Seaplane Base, and OLF Coupeville). All population estimates for areas within the dB DNL contours utilized 2010 U.S. Census Bureau data. A 7.1-percent growth factor was applied to the 2010 census statistics to account for population changes between 2010 and 2020 based on medium forecasted population projections for Island County during that period (Washington State Office of Financial Management, 2017). To simplify the analysis, this growth factor was also used for areas of Skagit County that fall within the 65+ dB DNL contours. These data should be used for comparative purposes only and are not considered actual numbers within the DNL contour range.
- <sup>5</sup> Numbers have been rounded to ensure totals sum.

Key:

- dB = decibel
- DNL = day-night average sound level
- FCLP = Field Carrier Landing Practice

Point of Interest			DNL (dB)					Increase in DNL re No Action (dB)																													
ID	Description	Related Field	A	B	C	D	E	-5	-4	-3	-2	-1	0	1	2	3	4	5	6	7	8	9	10	11	12	13	14	15	16								
P01	Joseph Whidbey State Park	Ault	58																																		
			59																																		
			59																																		
			58																																		
P02	Deception Pass State Park	Ault	73																																		
			74																																		
			75																																		
			74																																		
P03	Duguala State Park	Ault	66																																		
			66																																		
			66																																		
			66																																		
P04	Baseball Field (Ebey's Landing National Historical Reserve)	OLF	80																																		
			77																																		
			73																																		
			79																																		
P05	Ebey's Prairie	OLF	56																																		
			54																																		
			50																																		
			56																																		
P06	Fort Casey State Park	OLF	63																																		
			61																																		
			57																																		
			63																																		
P07	Cama Beach State Park	OLF	48																																		
			46																																		
			<45																																		
			47																																		
P08	Port Townsend	OLF	<45																																		
			<45																																		
			<45																																		
			<45																																		
P09	Moran State Park	Ault	<45																																		
			<45																																		
			<45																																		
			<45																																		
P10	San Juan Islands National Monument	Ault	55																																		
			55																																		
			55																																		
			55																																		
P11	San Juan Island Visitors Center	Ault	<45																																		
			<45																																		
			<45																																		
			<45																																		
P12	Cap Sante Park	Ault	<45																																		
			<45																																		
			<45																																		
			<45																																		
P13	Lake Campbell	Ault	55																																		
			55																																		
			56																																		
			55																																		



**Figure A7.5-1 Estimated Aircraft DNL at POIs for the High-Tempo FCLP Year, Alternative 3**

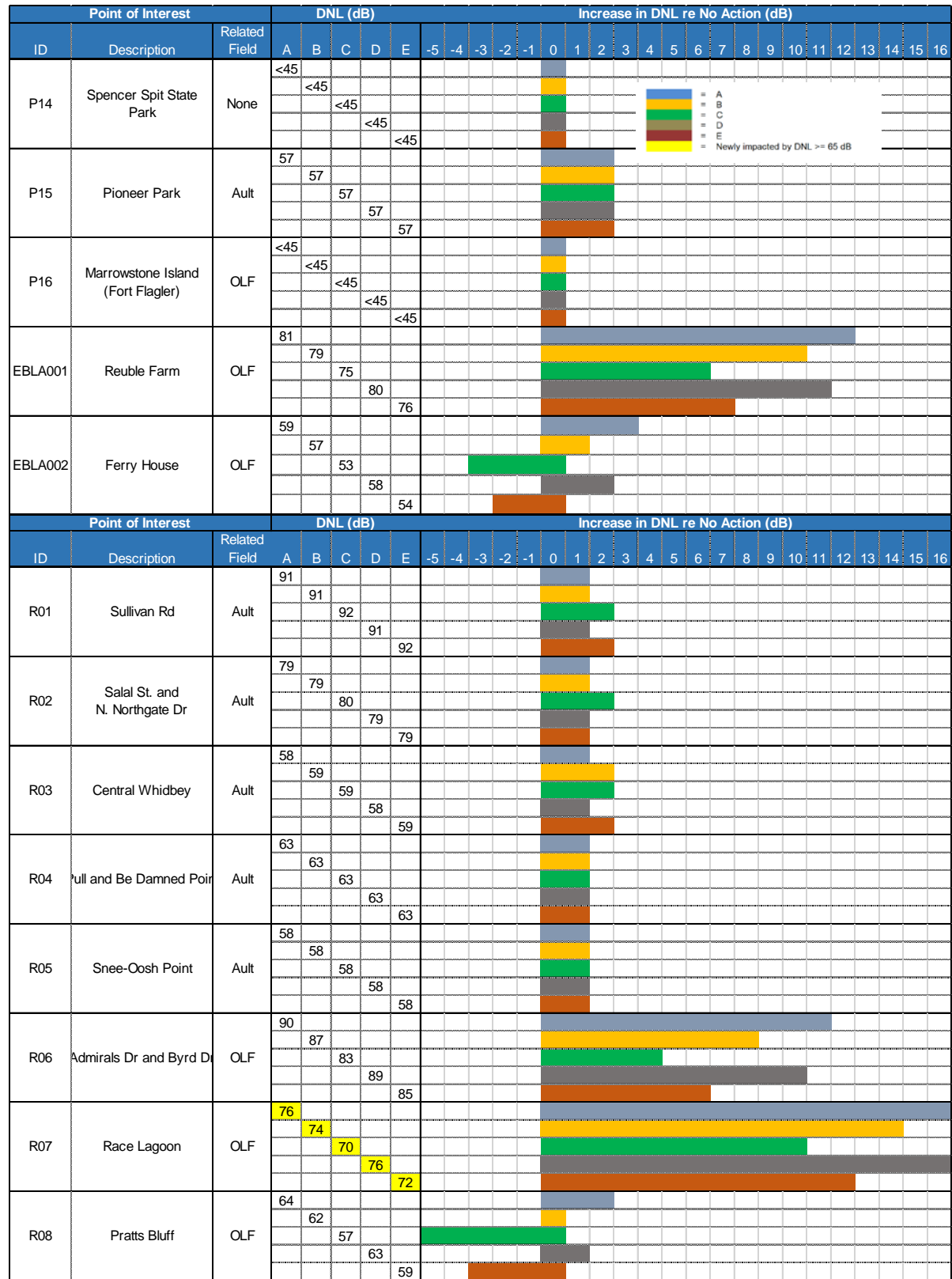


Figure A7.5-1. Estimated Aircraft DNL at POIs for the High-Tempo FCLP Year, Alternative 3 (continued)

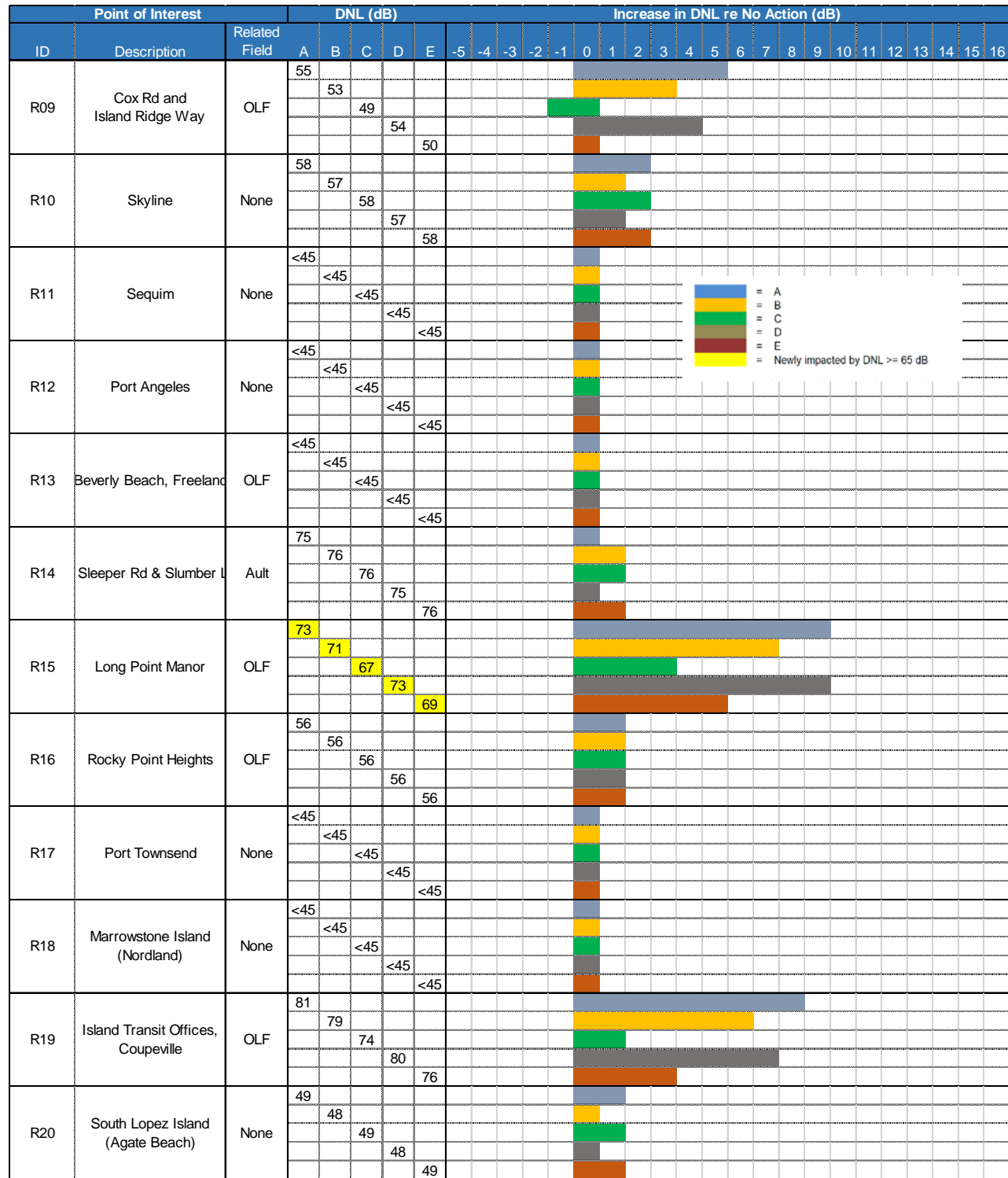
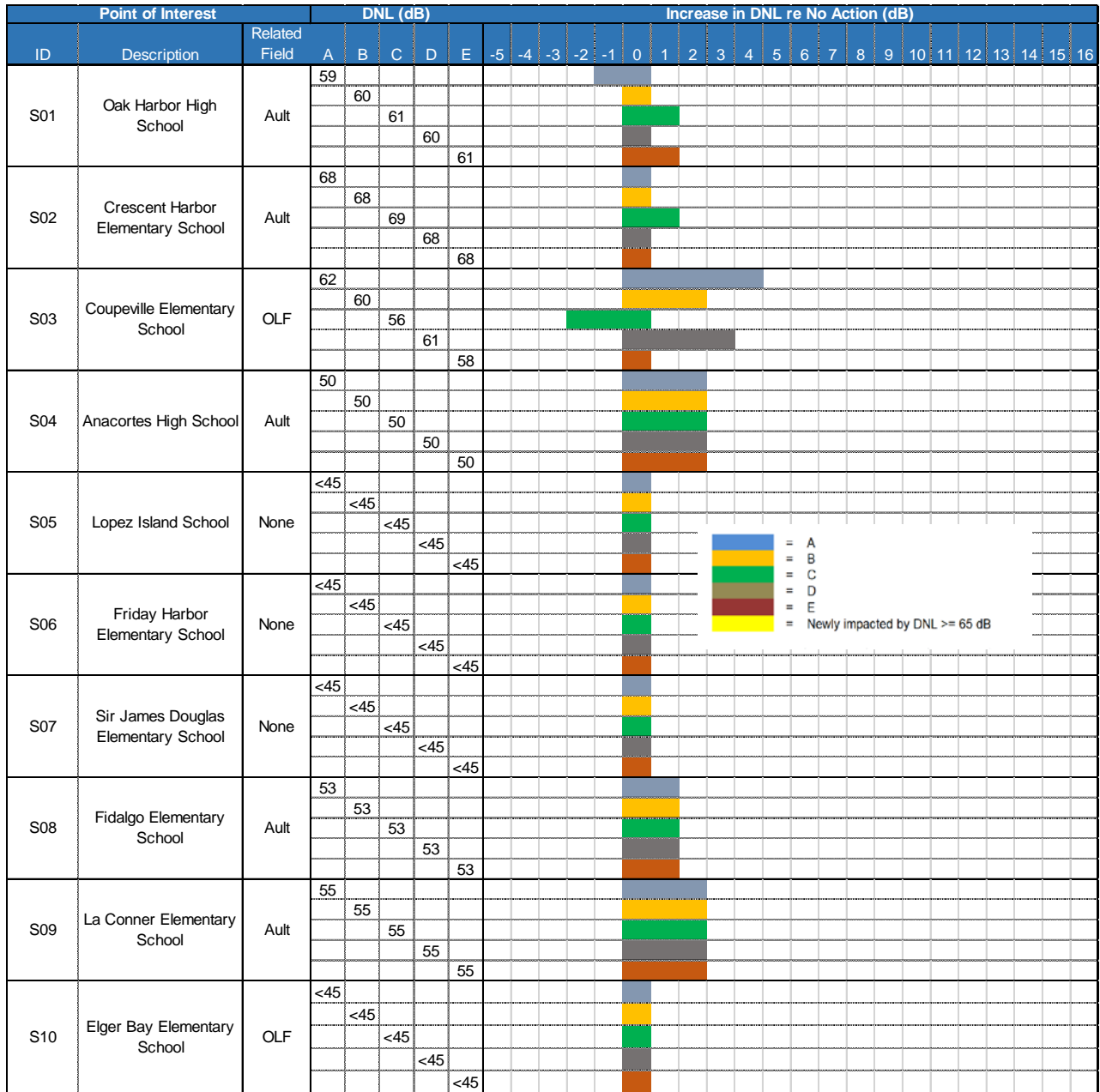


Figure A7.5-1. Estimated Aircraft DNL at POIs for the High-Tempo FCLP Year, Alternative 3 (continued)





**Figure A7.5-1. Estimated Aircraft DNL at POIs for the High-Tempo FCLP Year, Alternative 3 (concluded)**

**Table A7.5-2 Estimated Potential Hearing Loss for the High-Tempo FCLP Year, Alternative 3A**

Band of L <sub>eq(24)</sub> (dB)	Average NIPTS (dB) <sup>(1)</sup>	10 <sup>th</sup> Percentile NIPTS (dB) <sup>(1)</sup>	Estimated Population				Change in population re No Action			
			Ault Field (on-Station)	Ault Field (off-Station)	OLF Coupeville (off-Station)	TOTAL	Ault Field (on-Station)	Ault Field (off-Station)	OLF Coupeville (off-Station)	TOTAL
74-75	0.5	3.5	-	-	-	-	-	-	-	-
75-76	1.0	4.0	-	-	145	145	-	(0)	113	113
76-77	1.0	4.5	-	147	181	327	-	(8)	134	126
77-78	1.5	5.0	-	271	158	429	-	(5)	112	107
78-79	2.0	5.5	-	151	98	249	-	(18)	74	55
79-80	2.5	6.0	-	134	80	215	-	32	73	105
80-81	3.0	7.0	-	77	70	148	-	2	69	71
81-82	3.5	8.0	-	64	62	125	-	12	62	74
82-83	4.0	9.0	-	49	54	103	-	11	54	64
83-84	4.5	10.0	-	34	63	97	-	(2)	63	61
84-85	5.5	11.0	-	27	60	87	-	15	60	75
85-86	6.0	12.0	-	9	1	10	-	-	1	1
86-87	7.0	13.5	-	9	-	9	-	2	-	2
87-88	7.5	15.0	-	6	-	6	-	1	-	1
88-89	8.5	16.5	-	4	-	4	-	2	-	2
89-90	9.5	18.0	-	1	-	1	-	1	-	1
90-91	10.5	19.5	-	-	-	-	-	-	-	-
91-92	11.5	21.0	-	-	-	-	-	-	-	-

(1) rounded to nearest 0.5 dB

Note: Average NIPTS values greater than 10 dB, and 10th Percentile NIPTS values greater than 12 dB are estimated based on extrapolating available data from EPA guidance (EPA 1982).

**Table A7.5-3 Estimated Potential Hearing Loss for the High-Tempo FCLP Year, Alternative 3B**

Band of L <sub>eq(24)</sub> (dB)	Average NIPTS (dB) <sup>(1)</sup>	10 <sup>th</sup> Percentile NIPTS (dB) <sup>(1)</sup>	Estimated Population				Change in population re No Action			
			Ault Field (on-Station)	Ault Field (off-Station)	OLF Coupeville (off-Station)	TOTAL	Ault Field (on-Station)	Ault Field (off-Station)	OLF Coupeville (off-Station)	TOTAL
74-75	0.5	3.5	-	-	-	-	-	-	-	-
75-76	1.0	4.0	-	1	102	102	-	0	69	70
76-77	1.0	4.5	79	305	101	486	79	151	55	285
77-78	1.5	5.0	-	351	79	430	-	75	33	108
78-79	2.0	5.5	-	256	70	325	-	86	45	132
79-80	2.5	6.0	-	170	62	232	-	68	55	123
80-81	3.0	7.0	-	102	56	158	-	27	55	82
81-82	3.5	8.0	-	73	64	137	-	22	64	86
82-83	4.0	9.0	-	61	50	111	-	23	50	73
83-84	4.5	10.0	-	37	1	38	-	1	1	2
84-85	5.5	11.0	-	27	-	27	-	14	-	15
85-86	6.0	12.0	-	23	-	23	-	14	-	14
86-87	7.0	13.5	-	9	-	9	-	2	-	2
87-88	7.5	15.0	-	7	-	7	-	3	-	3
88-89	8.5	16.5	-	5	-	5	-	3	-	3
89-90	9.5	18.0	-	2	-	2	-	2	-	2
90-91	10.5	19.5	-	-	-	-	-	-	-	-
91-92	11.5	21.0	-	-	-	-	-	-	-	-

(1) rounded to nearest 0.5 dB

Note: Average NIPTS values greater than 10 dB, and 10th Percentile NIPTS values greater than 12 dB are estimated based on extrapolating available data from EPA guidance (EPA 1982).

**Table A7.5-4 Estimated Potential Hearing Loss for the High-Tempo FCLP Year, Alternative 3C**

Band of L <sub>eq(24)</sub> (dB)	Average NIPTS (dB) <sup>(1)</sup>	10 <sup>th</sup> Percentile NIPTS (dB) <sup>(1)</sup>	Estimated Population				Change in population re No Action			
			Ault Field (on-Station)	Ault Field (off-Station)	OLF Coupeville (off-Station)	TOTAL	Ault Field (on-Station)	Ault Field (off-Station)	OLF Coupeville (off-Station)	TOTAL
74-75	0.5	3.5	-	-	-	-	-	-	-	-
75-76	1.0	4.0	-	2	33	35	-	2	0	2
76-77	1.0	4.5	137	285	55	477	137	130	8	276
77-78	1.5	5.0	-	454	64	518	-	178	18	196
78-79	2.0	5.5	-	305	56	361	-	136	31	168
79-80	2.5	6.0	-	267	1	268	-	165	(6)	159
80-81	3.0	7.0	-	142	-	142	-	67	(1)	66
81-82	3.5	8.0	-	82	-	82	-	30	(0)	30
82-83	4.0	9.0	-	66	-	66	-	28	-	28
83-84	4.5	10.0	-	40	-	40	-	4	-	4
84-85	5.5	11.0	-	30	-	30	-	17	-	17
85-86	6.0	12.0	-	28	-	28	-	19	-	19
86-87	7.0	13.5	-	10	-	10	-	3	-	3
87-88	7.5	15.0	-	8	-	8	-	4	-	4
88-89	8.5	16.5	-	5	-	5	-	3	-	3
89-90	9.5	18.0	-	2	-	2	-	2	-	2
90-91	10.5	19.5	-	-	-	-	-	-	-	-
91-92	11.5	21.0	-	-	-	-	-	-	-	-

(1) rounded to nearest 0.5 dB

Note: Average NIPTS values greater than 10 dB, and 10th Percentile NIPTS values greater than 12 dB are estimated based on extrapolating available data from EPA guidance (EPA 1982).

**Table A7.5-5 Estimated Potential Hearing Loss for the High-Tempo FCLP Year, Alternative 3D**

Band of L <sub>eq(24)</sub> (dB)	Average NIPTS (dB) <sup>(1)</sup>	10 <sup>th</sup> Percentile NIPTS (dB) <sup>(1)</sup>	Estimated Population				Change in population re No Action			
			Ault Field (on-Station)	Ault Field (off-Station)	OLF Coupeville (off-Station)	TOTAL	Ault Field (on-Station)	Ault Field (off-Station)	OLF Coupeville (off-Station)	TOTAL
74-75	0.5	3.5	-	-	-	-	-	-	-	-
75-76	1.0	4.0	-	-	158	158	-	(0)	125	125
76-77	1.0	4.5	-	193	178	371	-	39	132	170
77-78	1.5	5.0	-	287	115	402	-	11	69	80
78-79	2.0	5.5	-	195	88	284	-	26	64	90
79-80	2.5	6.0	-	142	74	216	-	40	67	107
80-81	3.0	7.0	-	81	64	145	-	6	63	68
81-82	3.5	8.0	-	70	58	128	-	19	58	77
82-83	4.0	9.0	-	51	60	112	-	13	60	73
83-84	4.5	10.0	-	35	78	113	-	(1)	78	77
84-85	5.5	11.0	-	32	3	35	-	19	3	22
85-86	6.0	12.0	-	10	-	11	-	1	-	1
86-87	7.0	13.5	-	9	-	9	-	2	-	2
87-88	7.5	15.0	-	6	-	6	-	2	-	2
88-89	8.5	16.5	-	4	-	4	-	2	-	2
89-90	9.5	18.0	-	2	-	2	-	2	-	2
90-91	10.5	19.5	-	-	-	-	-	-	-	-
91-92	11.5	21.0	-	-	-	-	-	-	-	-

(1) rounded to nearest 0.5 dB

Note: Average NIPTS values greater than 10 dB, and 10th Percentile NIPTS values greater than 12 dB are estimated based on extrapolating available data from EPA guidance (EPA 1982).

**Table A7.5-6 Estimated Potential Hearing Loss for the High-Tempo FCLP Year, Alternative 3E**

Band of L <sub>eq(24)</sub> (dB)	Average NIPTS (dB) <sup>(1)</sup>	10 <sup>th</sup> Percentile NIPTS (dB) <sup>(1)</sup>	Estimated Population				Change in population re No Action			
			Ault Field (on-Station)	Ault Field (off-Station)	OLF Coupeville (off-Station)	TOTAL	Ault Field (on-Station)	Ault Field (off-Station)	OLF Coupeville (off-Station)	TOTAL
74-75	0.5	3.5	-	-	-	-	-	-	-	-
75-76	1.0	4.0	-	1	39	40	-	1	6	7
76-77	1.0	4.5	237	265	67	570	237	111	21	369
77-78	1.5	5.0	30	437	60	527	30	160	15	205
78-79	2.0	5.5	-	301	58	358	-	132	34	165
79-80	2.5	6.0	-	216	67	283	-	114	60	174
80-81	3.0	7.0	-	127	33	160	-	52	32	84
81-82	3.5	8.0	-	79	1	79	-	27	1	28
82-83	4.0	9.0	-	66	-	66	-	28	-	28
83-84	4.5	10.0	-	41	-	41	-	5	-	5
84-85	5.5	11.0	-	28	-	28	-	16	-	16
85-86	6.0	12.0	-	28	-	28	-	19	-	19
86-87	7.0	13.5	-	9	-	9	-	2	-	2
87-88	7.5	15.0	-	8	-	8	-	4	-	4
88-89	8.5	16.5	-	5	-	5	-	3	-	3
89-90	9.5	18.0	-	3	-	3	-	3	-	3
90-91	10.5	19.5	-	-	-	-	-	-	-	-
91-92	11.5	21.0	-	-	-	-	-	-	-	-

(1) rounded to nearest 0.5 dB

Note: Average NIPTS values greater than 10 dB, and 10th Percentile NIPTS values greater than 12 dB are estimated based on extrapolating available data from EPA guidance (EPA 1982).

**Table A7.5-7 Average Indoor Nightly Probability of Awakening at Applicable POIs for the High-Tempo FCLP Year, Alternative 3**

Point of Interest				Annual Average Nightly (2200-0700) Probability of Awakening (%) <sup>(1)</sup>																			
Type	ID	Description	Related Field	Alt3A		Change from No Action		Alt3B		Change from No Action		Alt3C		Change from No Action		Alt3D		Change from No Action		Alt3E		Change from No Action	
				Windows Open	Windows Closed	Windows Open	Windows Closed	Windows Open	Windows Closed	Windows Open	Windows Closed	Windows Open	Windows Closed	Windows Open	Windows Closed	Windows Open	Windows Closed	Windows Open	Windows Closed	Windows Open	Windows Closed	Windows Open	Windows Closed
Residential	R01	Sullivan Rd	Ault	68%	52%	6%	6%	72%	56%	10%	10%	75%	59%	13%	13%	69%	53%	7%	7%	74%	58%	12%	12%
	R02	Salal St. and N. Northgate Dr	Ault	50%	36%	6%	5%	53%	38%	9%	7%	57%	42%	13%	11%	51%	37%	7%	6%	55%	40%	11%	9%
	R03	Central Whidbey	Ault	20%	11%	3%	2%	22%	12%	5%	3%	24%	13%	7%	4%	21%	11%	4%	2%	23%	12%	6%	3%
	R04	Pull and Be Damned Point	Ault	25%	12%	4%	3%	27%	13%	6%	4%	28%	13%	7%	4%	26%	13%	5%	4%	28%	13%	7%	4%
	R05	Snee-Oosh Point	Ault	21%	8%	5%	3%	22%	8%	6%	3%	23%	8%	7%	3%	21%	8%	5%	3%	23%	8%	7%	3%
	R06	Admirals Dr and Byrd Dr	OLF	44%	31%	35%	25%	29%	20%	20%	14%	13%	8%	4%	2%	39%	28%	30%	22%	18%	12%	9%	6%
	R07	Race Lagoon	OLF	21%	10%	16%	8%	14%	6%	9%	4%	7%	3%	2%	1%	19%	9%	14%	7%	10%	4%	5%	2%
	R08	Pratts Bluff	OLF	16%	10%	12%	8%	10%	6%	6%	4%	4%	2%	-	-	14%	9%	10%	7%	6%	4%	2%	2%
	R09	Cox Rd and Island Ridge Way	OLF	13%	9%	10%	7%	8%	5%	5%	3%	3%	2%	-	-	12%	8%	9%	6%	5%	3%	2%	1%
	R10	Skyline	None	8%	3%	2%	1%	8%	3%	2%	1%	10%	3%	4%	1%	8%	3%	2%	1%	8%	3%	2%	1%
	R11	Sequim	None	-	-	-	-	-	-	-	-	-	-	-	-	-	-	-	-	-	-	-	-
	R12	Port Angeles	None	1%	0%	1%	-	1%	0%	1%	-	1%	0%	1%	-	1%	0%	1%	-	1%	0%	1%	-
	R13	Beverly Beach, Freeland	OLF	6%	-	4%	-	4%	-	2%	-	2%	-	-	-	6%	-	4%	-	3%	-	1%	-
	R14	E Sleeper Rd & Slumber Ln	Ault	45%	31%	5%	3%	48%	34%	8%	6%	52%	37%	12%	9%	46%	32%	6%	4%	51%	36%	11%	8%
	R15	Long Point Manor	OLF	25%	14%	14%	10%	20%	9%	9%	5%	14%	4%	3%	-	24%	12%	13%	8%	16%	6%	5%	2%
	R16	Rocky Point Heights	OLF	11%	4%	1%	1%	12%	4%	2%	1%	13%	4%	3%	1%	12%	4%	2%	1%	13%	4%	3%	1%
	R17	Port Townsend	None	1%	-	-	-	1%	-	-	-	0%	-	-1%	-	1%	-	-	-	1%	-	-	-
	R18	Marrowstone Island (Nordland)	None	-	-	-	-	-	-	-	-	0%	-	-	-	-	-	-	-	0%	-	-	-
	R19	Island Transit Offices, Coupeville	OLF	36%	23%	26%	18%	25%	15%	15%	10%	12%	6%	2%	1%	33%	21%	23%	16%	16%	9%	6%	4%
	R20	South Lopez Island (Agate Beach)	None	4%	1%	1%	-	3%	1%	-	-	3%	1%	-	-	3%	1%	-	-	3%	1%	-	-
School (near residential)	S01	Oak Harbor High School	Ault	25%	15%	3%	2%	28%	17%	6%	4%	30%	18%	8%	5%	26%	16%	4%	3%	29%	18%	7%	5%
	S02	Crescent Harbor Elementary School	Ault	27%	16%	4%	3%	29%	17%	6%	4%	31%	19%	8%	6%	28%	17%	5%	4%	30%	18%	7%	5%
	S03	Coupeville Elementary School	OLF	19%	12%	14%	9%	12%	7%	7%	4%	6%	3%	1%	-	17%	10%	12%	7%	8%	4%	3%	1%
	S04	Anacortes High School	Ault	3%	1%	1%	-	3%	1%	1%	-	3%	1%	1%	-	3%	1%	1%	-	3%	1%	1%	-
	S05	Lopez Island School	None	-	-	-	-	-	-	-	-	-	-	-	-	-	-	-	-	-	-	-	-
	S06	Friday Harbor Elementary School	None	-	-	-	-	-	-	-	-	-	-	-	-	-	-	-	-	-	-	-	-
	S07	Sir James Douglas Elementary School	None	-	-	-	-	-	-	-	-	-	-	-	-	-	-	-	-	-	-	-	-
	S08	Fidalgo Elementary School	Ault	9%	3%	2%	1%	9%	3%	2%	1%	10%	3%	3%	1%	9%	3%	2%	1%	9%	3%	2%	1%
	S09	La Conner Elementary School	Ault	11%	5%	3%	2%	11%	5%	3%	2%	10%	5%	2%	2%	11%	5%	3%	2%	11%	5%	3%	2%
	S10	Eiger Bay Elementary School	OLF	0%	0%	-	-	0%	0%	-	-	0%	0%	-	-	0%	0%	-	-	0%	0%	-	-

<sup>(1)</sup> assumes 15 dB and 25 dB of Noise Level Reductions for windows open and closed, respectively.

Table A7.5-8 Indoor Speech Interference for the High-Tempo FCLP Year, Alternative 3

Point of Interest				Annual Average Daily Indoor Daytime (0700-2200) Events per Hour <sup>(1)</sup>																			
				Alt3A		Change from No Action		Alt3B		Change from No Action		Alt3C		Change from No Action		Alt3D		Change from No Action		Alt3E		Change from No Action	
Type	ID	Description	Related Field	Windows Open	Windows Closed	Windows Open	Windows Closed	Windows Open	Windows Closed	Windows Open	Windows Closed	Windows Open	Windows Closed	Windows Open	Windows Closed	Windows Open	Windows Closed	Windows Open	Windows Closed	Windows Open	Windows Closed	Windows Open	Windows Closed
Residential	R01	Sullivan Rd	Ault	9	9	+1	+1	10	10	+2	+2	10	10	+2	+2	9	9	+1	+1	10	10	+2	+2
	R02	Salal St. and N. Northgate Dr	Ault	9	9	+1	+1	10	10	+2	+2	10	10	+2	+2	9	9	+1	+1	10	10	+2	+2
	R03	Central Whidbey	Ault	5	-	-	-	6	-	+1	-	6	-	+1	-	5	-	-	-	6	-	+1	-
	R04	Pull and Be Damned Point	Ault	3	1	+1	-	3	2	+1	+1	3	1	+1	-	3	2	+1	+1	3	2	+1	+1
	R05	Snee-Oosh Point	Ault	2	1	-	-	2	1	-	-	2	1	-	-	2	1	-	-	2	1	-	-
	R06	Admirals Dr and Byrd Dr	OLF	2	2	+2	+2	1	1	+1	+1	1	-	+1	-	2	2	+2	+2	1	1	+1	+1
	R07	Race Lagoon	OLF	2	1	+1	+1	1	1	-	+1	1	-	-	-	2	1	+1	+1	1	-	-	-
	R08	Pratts Bluff	OLF	2	1	+2	+1	1	-	+1	-	1	-	+1	-	2	1	+2	+1	1	-	+1	-
	R09	Cox Rd and Island Ridge Way	OLF	1	-	+1	-	1	-	+1	-	-	-	-	-	1	-	+1	-	-	-	-	-
	R10	Skyline	None	1	-	+1	-	1	-	+1	-	1	-	+1	-	1	-	+1	-	1	-	+1	-
	R11	Sequim	None	-	-	-	-	-	-	-	-	-	-	-	-	-	-	-	-	-	-	-	-
	R12	Port Angeles	None	-	-	-	-	-	-	-	-	-	-	-	-	-	-	-	-	-	-	-	-
	R13	Beverly Beach, Freeland	OLF	-	-	-	-	-	-	-	-	-	-	-	-	-	-	-	-	-	-	-	-
	R14	E Sleeper Rd & Slumber Ln	Ault	9	8	+1	+1	10	9	+2	+2	10	9	+2	+2	9	8	+1	+1	10	9	+2	+2
	R15	Long Point Manor	OLF	3	2	+2	+1	2	1	+1	-	1	1	-	-	2	2	+1	+1	2	1	+1	-
	R16	Rocky Point Heights	OLF	2	1	-	-	2	1	-	-	2	1	-	-	2	1	-	-	2	1	-	-
	R17	Port Townsend	None	-	-	-	-	-	-	-	-	-	-	-	-	-	-	-	-	-	-	-	-
	R18	Marrowstone Island (Nordland)	None	-	-	-	-	-	-	-	-	-	-	-	-	-	-	-	-	-	-	-	-
	R19	Island Transit Offices, Coupeville	OLF	2	2	+1	+1	1	1	-	-	1	1	-	-	2	2	+1	+1	1	1	-	-
	R20	South Lopez Island (Agate Beach)	None	-	-	-	-	-	-	-	-	-	-	-	-	-	-	-	-	-	-	-	-
School (near residential)	S01	Oak Harbor High School	Ault	6	2	-	-	7	3	+1	+1	8	3	+2	+1	7	3	+1	+1	8	3	+2	+1
	S02	Crescent Harbor Elementary School	Ault	5	2	-	-	6	3	+1	+1	7	3	+2	+1	6	2	+1	-	7	3	+2	+1
	S03	Coupeville Elementary School	OLF	2	1	+1	+1	2	1	+1	+1	1	-	-	-	2	1	+1	+1	1	1	-	+1
	S04	Anacortes High School	Ault	-	-	-	-	-	-	-	-	-	-	-	-	-	-	-	-	-	-	-	-
	S05	Lopez Island School	None	-	-	-	-	-	-	-	-	-	-	-	-	-	-	-	-	-	-	-	-
	S06	Friday Harbor Elementary School	None	-	-	-	-	-	-	-	-	-	-	-	-	-	-	-	-	-	-	-	-
	S07	Sir James Douglas Elementary School	None	-	-	-	-	-	-	-	-	-	-	-	-	-	-	-	-	-	-	-	-
	S08	Fidalgo Elementary School	Ault	-	-	-	-	-	-	-	-	-	-	-	-	-	-	-	-	-	-	-	-
	S09	La Conner Elementary School	Ault	1	1	-	+1	1	1	-	+1	1	1	-	+1	1	1	-	+1	1	1	-	+1
	S10	Elger Bay Elementary School	OLF	-	-	-	-	-	-	-	-	-	-	-	-	-	-	-	-	-	-	-	-

Table A7.5-9 Classroom Learning Interference for the High-Tempo FCLP Year, Alternative 3

Representative School Location				Alt3A					Change from No Action					
				Outdoor		Indoor <sup>(1)</sup>			Outdoor		Indoor <sup>(1)</sup>		Indoor <sup>(1)</sup>	
						Windows Open	Windows Closed	Windows Open			Windows Closed			
Type	ID	Description	Related Field	L <sub>eq(8h)</sub> (dB)	L <sub>eq(8h)</sub> (dB)	per Hour <sup>(2)</sup>	L <sub>eq(8h)</sub> (dB)	per Hour <sup>(2)</sup>	L <sub>eq(8h)</sub> (dB)	L <sub>eq(8h)</sub> (dB)	per Hour <sup>(2)</sup>	L <sub>eq(8h)</sub> (dB)	per Hour <sup>(2)</sup>	
School Surrogate	R03	Central Whidbey	Ault	58	<45	5	<45	-	+1	+1	+1	+1	-	
	R11	Sequim	None	<45	<45	-	<45	-	+1	+1	-	+1	-	
School	S01	Oak Harbor High School	Ault	57	<45	6	<45	2	-	-	+1	-	-	
	S02	Crescent Harbor Elementary School	Ault	68	53	5	<45	2	+1	+1	+1	+1	-	
	S03	Coupeville Elementary School	OLF	57	<45	2	<45	1	+5	+5	+2	+5	+1	
	S04	Anacortes High School	Ault	47	<45	-	<45	-	+1	+1	-	+1	-	
	S05	Lopez Island School	None	<45	<45	-	<45	-	+2	+2	-	+2	-	
	S06	Friday Harbor Elementary School	None	<45	<45	-	<45	-	+1	-	-	-	-	
	S07	Sir James Douglas Elementary School	None	<45	<45	-	<45	-	-3	-3	-	-3	-	
	S08	Fidalgo Elementary School	Ault	50	<45	-	<45	-	+1	+1	-	+1	-	
	S09	La Conner Elementary School	Ault	52	<45	1	<45	-	+2	+2	-	+2	-	
	S10	Elger Bay Elementary School	OLF	<45	<45	-	<45	-	+2	+2	-	+2	-	
Number of Sites Exceeding 1 Intrusive Event per Hour						4		2			1		-	
Minimum Number of Intrusive Events per Hour if Exceeding 1							2				+2		-	
Maximum Number of Intrusive Events per Hour if Exceeding 1						6		2			+2		-	
Point of Interest				Alt3B					Change from No Action					
School Surrogate	R03	Central Whidbey	Ault	58	<45	5	<45	-	+1	+1	+1	+1	-	
	R11	Sequim	None	<45	<45	-	<45	-	+1	+1	-	+1	-	
School	S01	Oak Harbor High School	Ault	58	<45	7	<45	3	+1	+1	+2	+1	+1	
	S02	Crescent Harbor Elementary School	Ault	68	53	6	<45	2	+1	+1	+2	+1	+1	
	S03	Coupeville Elementary School	OLF	55	<45	1	<45	1	+3	+3	+1	+3	+1	
	S04	Anacortes High School	Ault	47	<45	-	<45	-	+1	+1	-	+1	-	
	S05	Lopez Island School	None	<45	<45	-	<45	-	+1	+1	-	+1	-	
	S06	Friday Harbor Elementary School	None	<45	<45	-	<45	-	+1	-	-	-	-	
	S07	Sir James Douglas Elementary School	None	<45	<45	-	<45	-	-3	-3	-	-3	-	
	S08	Fidalgo Elementary School	Ault	50	<45	-	<45	-	+1	+1	-	+1	-	
	S09	La Conner Elementary School	Ault	52	<45	1	<45	-	+2	+2	-	+2	-	
	S10	Elger Bay Elementary School	OLF	<45	<45	-	<45	-	+1	+1	-	+1	-	
Number of Sites Exceeding 1 Intrusive Event per Hour						3		2					-	
Minimum Number of Intrusive Events per Hour if Exceeding 1							5				+2		-	
Maximum Number of Intrusive Events per Hour if Exceeding 1						7		3			+2		-	
Point of Interest				Alt3C					Change from No Action					
School Surrogate	R03	Central Whidbey	Ault	59	<45	6	<45	-	+2	+2	+2	+2	-	
	R11	Sequim	None	<45	<45	-	<45	-	+2	+2	-	+2	-	
School	S01	Oak Harbor High School	Ault	58	<45	7	<45	3	+1	+1	+2	+1	+1	
	S02	Crescent Harbor Elementary School	Ault	69	54	6	<45	3	+2	+2	+2	+2	+1	
	S03	Coupeville Elementary School	OLF	51	<45	1	<45	-	-1	-1	+1	-1	-	
	S04	Anacortes High School	Ault	47	<45	-	<45	-	+1	+1	-	+1	-	
	S05	Lopez Island School	None	<45	<45	-	<45	-	+2	+2	-	+2	-	
	S06	Friday Harbor Elementary School	None	<45	<45	-	<45	-	+1	-	-	-	-	
	S07	Sir James Douglas Elementary School	None	<45	<45	-	<45	-	-3	-3	-	-3	-	
	S08	Fidalgo Elementary School	Ault	50	<45	-	<45	-	+1	+1	-	+1	-	
	S09	La Conner Elementary School	Ault	52	<45	1	<45	-	+2	+2	-	+2	-	
	S10	Elger Bay Elementary School	OLF	<45	<45	-	<45	-	+1	+1	-	+1	-	
Number of Sites Exceeding 1 Intrusive Event per Hour						3		2			3		-	
Minimum Number of Intrusive Events per Hour if Exceeding 1							6				+2		-	
Maximum Number of Intrusive Events per Hour if Exceeding 1						7		3			+2		-	

Notes:

(1) assumes 15 dB and 25 dB of Noise Level Reductions for windows open and closed, respectively.



**Table A7.5-9 Classroom Learning Interference for the High-Tempo FCLP Year, Alternative 3**

Representative School Location				Alt3D						Change from No Action			
				Outdoor	Indoor (1)			Outdoor	Indoor (1)				
					Windows Open	Windows Closed	Events per Hour(2)		Windows Open	Windows Closed	Events per Hour(2)		
Type	ID	Description	Related Field	L <sub>eq(8h)</sub> (dB)	L <sub>eq(8h)</sub> (dB)	per Hour(2)	L <sub>eq(8h)</sub> (dB)	per Hour(2)	L <sub>eq(8h)</sub> (dB)	per Hour(2)	L <sub>eq(8h)</sub> (dB)	per Hour(2)	
School Surrogate	R03	Central Whidbey	Ault	58	<45	5	<45	-	+1	+1	+1	-	
	R11	Sequim	None	<45	<45	-	<45	-	+1	+1	-	+1	-
School	S01	Oak Harbor High School	Ault	57	<45	6	<45	2	-	-	+1	-	-
	S02	Crescent Harbor Elementary School	Ault	68	53	5	<45	2	+1	+1	+1	+1	-
	S03	Coupeville Elementary School	OLF	57	<45	2	<45	1	+5	+5	+2	+5	+1
	S04	Anacortes High School	Ault	47	<45	-	<45	-	+1	+1	-	+1	-
	S05	Lopez Island School	None	<45	<45	-	<45	-	+2	+2	-	+2	-
	S06	Friday Harbor Elementary School	None	<45	<45	-	<45	-	+1	-	-	-	-
	S07	Sir James Douglas Elementary School	None	<45	<45	-	<45	-	+1	+1	-	+1	-
	S08	Fidalgo Elementary School	Ault	50	<45	-	<45	-	+1	+1	-	+1	-
	S09	La Conner Elementary School	Ault	52	<45	1	<45	-	+2	+2	-	+2	-
	S10	Elger Bay Elementary School	OLF	<45	<45	-	<45	-	+1	+1	-	+1	-
Number of Sites Exceeding 1 Intrusive Event per Hour						4		2			1		-
Minimum Number of Intrusive Events per Hour if Exceeding 1						5		2			+2		-
Maximum Number of Intrusive Events per Hour if Exceeding 1						6		2			+2		-
Point of Interest				Alt3E						Change from No Action			
School Surrogate	R03	Central Whidbey	Ault	59	<45	6	<45	-	+2	+2	+2	+2	-
	R11	Sequim	None	<45	<45	-	<45	-	+2	+2	-	+2	-
School	S01	Oak Harbor High School	Ault	58	<45	7	<45	3	+1	+1	+2	+1	+1
	S02	Crescent Harbor Elementary School	Ault	69	54	6	<45	2	+2	+2	+2	+2	-
	S03	Coupeville Elementary School	OLF	53	<45	1	<45	-	+1	+1	+1	+1	-
	S04	Anacortes High School	Ault	47	<45	-	<45	-	+1	+1	-	+1	-
	S05	Lopez Island School	None	<45	<45	-	<45	-	+2	+2	-	+2	-
	S06	Friday Harbor Elementary School	None	<45	<45	-	<45	-	+1	-	-	-	-
	S07	Sir James Douglas Elementary School	None	<45	<45	-	<45	-	+1	+1	-	+1	-
	S08	Fidalgo Elementary School	Ault	50	<45	-	<45	-	+1	+1	-	+1	-
	S09	La Conner Elementary School	Ault	52	<45	1	<45	-	+2	+2	-	+2	-
	S10	Elger Bay Elementary School	OLF	<45	<45	-	<45	-	+1	+1	-	+1	-
Number of Sites Exceeding 1 Intrusive Event per Hour						3		2			3		-
Minimum Number of Intrusive Events per Hour if Exceeding 1						6		2			+2		-
Maximum Number of Intrusive Events per Hour if Exceeding 1						7		3			+2		-

**Notes:**

(1) assumes 15 dB and 25 dB of Noise Level Reductions for windows open and closed, respectively.

(2) Number of Average School-Day Events per hour during 8-hour school day (0800-1600) At or Above an Indoor Maximum (single-event) Sound Level (L<sub>max</sub>) of 50 dB;

Table A7.5-10 Recreational Speech Interference for the High-Tempo FCLP Year, Alternative 3

Representative Park Receptor			Annual Average Outdoor Daily Daytime Events per Hour, NA 50 L <sub>max</sub>																			
			Alt3A		Increase re No Action		Alt3B		Increase re No Action		Alt3C		Increase re No Action		Alt3D		Increase re No Action		Alt3E		Increase re No Action	
			Day	Night	Day	Night	Day	Night	Day	Night	Day	Night	Day	Night	Day	Night	Day	Night	Day	Night	Day	Night
Park	P01	Joseph Whidbey State Park	9	2	+1	-	9	2	+1	-	10	2	+2	-	9	2	+1	-	10	2	+2	-
	P02	Deception Pass State Park	9	2	+1	-	10	2	+2	-	10	3	+2	+1	9	2	+1	-	10	2	+2	-
	P03	Dugualla State Park	9	2	+1	-	9	2	+1	-	10	2	+2	-	9	2	+1	-	10	2	+2	-
	P04	Baseball Field (Ebey's Landing National Historical Reserve)	5	1	+2	-	4	1	+1	-	3	1	-	-	4	1	+1	-	4	1	+1	-
	P05	Ebey's Landing State Park	4	1	+2	+1	3	1	+1	+1	3	1	+1	+1	4	1	+2	+1	3	1	+1	+1
	P06	Fort Casey State Park	3	1	+2	+1	2	1	+1	+1	1	-	-	-	3	1	+2	+1	2	-	+1	-
	P07	Cama Beach State Park	5	1	+2	+1	4	1	+1	+1	3	1	-	+1	5	1	+2	+1	4	1	+1	+1
	P08	Port Townsend	2	1	+1	+1	2	1	+1	+1	1	-	-	-	2	1	+1	+1	1	-	-	-
	P09	Moran State Park	-	-	-	-	-	-	-	-	-	-	-	-	-	-	-	-	-	-	-	-
	P10	San Juan Islands National Monument	8	2	+1	-	9	2	+2	-	9	2	+2	-	8	2	+1	-	9	2	+2	-
	P11	San Juan Island Visitors Center	-	-	-	-	-	-	-	-	-	-	-	-	-	-	-	-	-	-	-	-
	P12	Cap Sante Park	1	-	+1	-	1	-	+1	-	1	-	+1	-	1	-	+1	-	1	-	+1	-
	P13	Lake Campbell	5	1	+1	-	5	1	+1	-	6	1	+2	-	5	1	+1	-	5	1	+1	-
	P14	Spencer Spit State Park	-	-	-	-	-	-	-	-	-	-	-	-	-	-	-	-	-	-	-	-
	P15	Pioneer Park	5	1	+1	-	4	1	-	-	4	1	-	-	4	1	-	-	4	1	-	-
	P16	Marrowstone Island (Fort Flagler)	2	1	+2	+1	1	-	+1	-	-	-	-	-	1	1	+1	+1	1	-	+1	-
EBLA001	Reuble Farm	4	1	+2	+1	3	1	+1	+1	2	-	-	-	4	1	+2	+1	3	1	+1	+1	
EBLA002	Ferry House	4	1	+2	+1	3	1	+1	+1	2	-	-	-	4	1	+2	+1	3	1	+1	+1	
Residential	R01	Sullivan Rd	9	2	+1	-	10	2	+2	-	11	3	+3	+1	10	2	+2	-	10	3	+2	+1
	R02	Salal St. and N. Northgate Dr	9	2	+1	-	10	2	+2	-	11	3	+3	+1	10	2	+2	-	10	3	+2	+1
	R03	Central Whidbey	8	2	+1	-	9	2	+2	-	9	2	+2	-	9	2	+2	-	9	2	+2	-
	R04	Pull and Be Damned Point	8	2	+1	-	9	2	+2	-	10	2	+3	-	9	2	+2	-	9	2	+2	-
	R05	Snee-Oosh Point	8	2	+1	-	9	2	+2	-	9	2	+2	-	8	2	+1	-	9	2	+2	-
	R06	Admirals Dr and Byrd Dr	3	1	+2	+1	2	1	+1	+1	1	-	-	-	3	1	+2	+1	2	-	+1	-
	R07	Race Lagoon	5	1	+2	-	4	1	+1	-	3	1	-	-	4	1	+1	-	3	1	-	-
	R08	Pratts Bluff	3	1	+2	+1	2	1	+1	+1	1	-	-	-	3	1	+2	+1	2	-	+1	-
	R09	Cox Rd and Island Ridge Way	2	1	+1	+1	2	1	+1	+1	1	-	-	-	2	1	+1	+1	1	-	-	-
	R10	Skyline	4	1	-	-	4	1	-	-	5	1	+1	-	4	1	-	-	5	1	+1	-
	R11	Sequim	1	-	+1	-	1	-	+1	-	1	-	+1	-	1	-	+1	-	1	-	+1	-
	R12	Port Angeles	1	-	-	-	1	-	-	-	1	-	-	-	1	-	-	-	1	-	-	-
	R13	Beverly Beach, Freeland	1	-	+1	-	1	-	+1	-	-	-	-	-	1	-	+1	-	-	-	-	-
	R14	E Sleeper Rd & Slumber Ln	9	2	+1	-	10	2	+2	-	10	3	+2	+1	10	2	+2	-	10	3	+2	+1
	R15	Long Point Manor	9	3	+2	+1	9	2	+2	-	9	2	+2	-	9	3	+2	+1	9	2	+2	-
	R16	Rocky Point Heights	5	1	+1	-	5	2	+1	+1	6	2	+2	+1	5	1	+1	-	5	2	+1	+1
	R17	Port Townsend	2	1	+1	+1	1	-	-	-	-	-	-1	-	1	1	-	+1	1	-	-	-
	R18	Marrowstone Island (Nordland)	-	-	-	-	-	-	-	-	-	-	-	-	-	-	-	-	-	-	-	-
	R19	Island Transit Offices, Coupeville	5	1	+2	-	4	1	+1	-	3	1	-	-	5	1	+2	-	4	1	+1	-
	R20	South Lopez Island (Agate Beach)	4	1	+1	-	4	1	+1	-	4	1	+1	-	4	1	+1	-	4	1	+1	-
School	S01	Oak Harbor High School	9	2	+1	-	10	2	+2	-	10	3	+2	+1	9	2	+1	-	10	2	+2	-
	S02	Crescent Harbor Elementary School	8	2	+1	-	9	2	+2	-	10	2	+3	-	9	2	+2	-	9	2	+2	-
	S03	Coupeville Elementary School	5	1	+2	-	4	1	+1	-	3	1	-	-	4	1	+1	-	3	1	-	-
	S04	Anacortes High School	1	-	-	-	1	-	-	-	1	-	-	-	1	-	-	-	1	-	-	-
	S05	Lopez Island School	-	-	-	-	-	-	-	-	-	-	-	-	-	-	-	-	-	-	-	-
	S06	Friday Harbor Elementary School	-	-	-	-	-	-	-	-	-	-	-	-	-	-	-	-	-	-	-	-
	S07	Sir James Douglas Elementary School	-	-	-	-	-	-	-	-	-	-	-	-	-	-	-	-	-	-	-	-
	S08	Fidalgo Elementary School	5	1	+1	-	5	1	+1	-	5	1	+1	-	5	1	+1	-	5	1	+1	-
	S09	La Conner Elementary School	4	1	+1	-	4	1	+1	-	4	1	+1	-	4	1	+1	-	4	1	+1	-
	S10	Elger Bay Elementary School	1	-	-	-	1	-	-	-	1	-	-	-	1	-	-	-	1	-	-	-