

WETLANDS EXHIBIT FOR
SUBDIVISION OF CHILDRESS PROPERTY

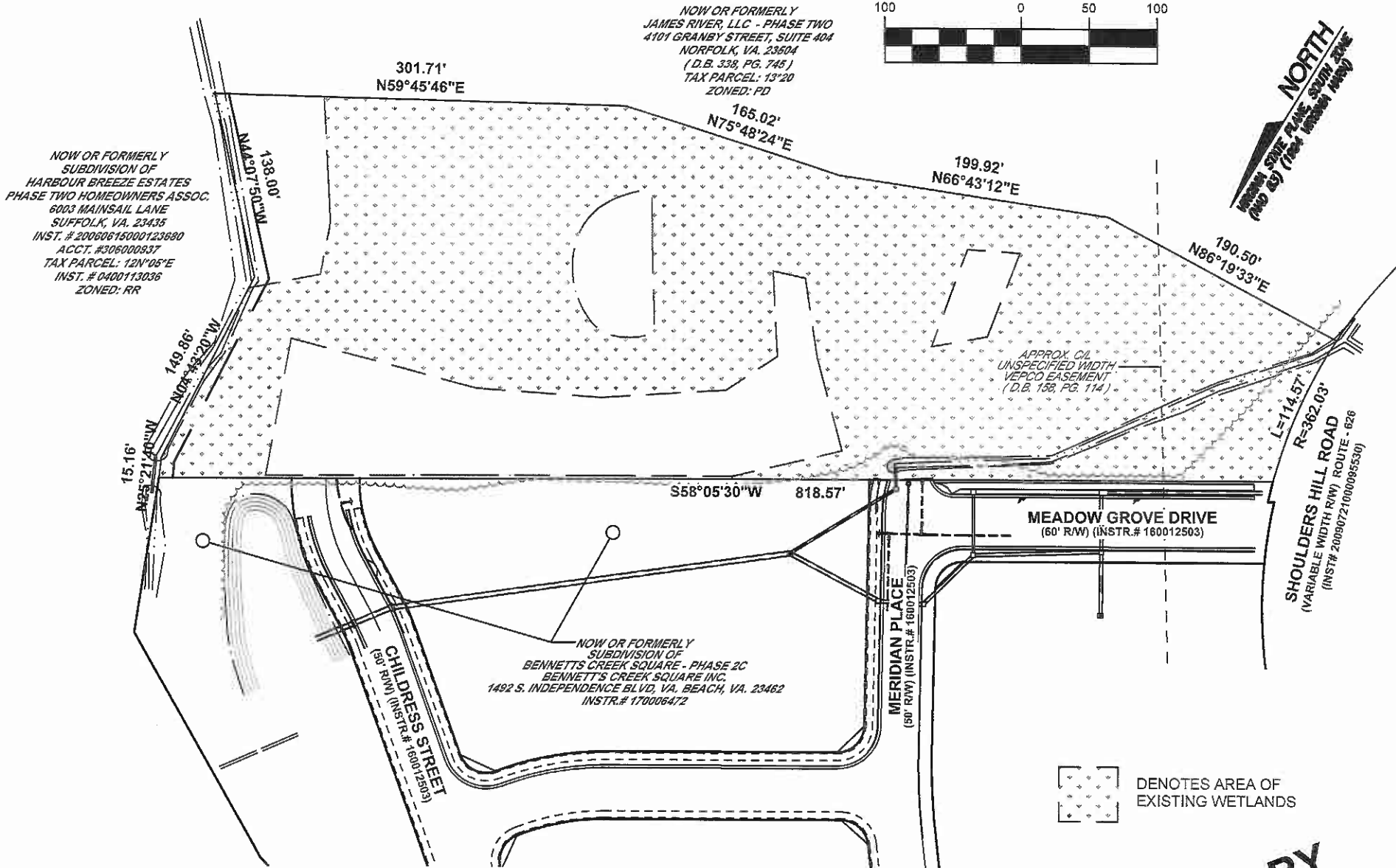
TAX MAP NO. 12*59
 NANSEMOND BOROUGH, SUFFOLK, VIRGINIA



HOGGARD / EURE ASSOCIATES, P.C.
 Engineers • Surveyors • Planners
 901 PORTCENTRE PARKWAY, SUITE 5 (757)484-9670
 Portsmouth, Virginia 23704

PRELIMINARY

SCALE: 1"=2,000'
DATE: 12/11/2017
DRAWN: GDC
REV:
1 OF 8
H&E WO#: 2395.02



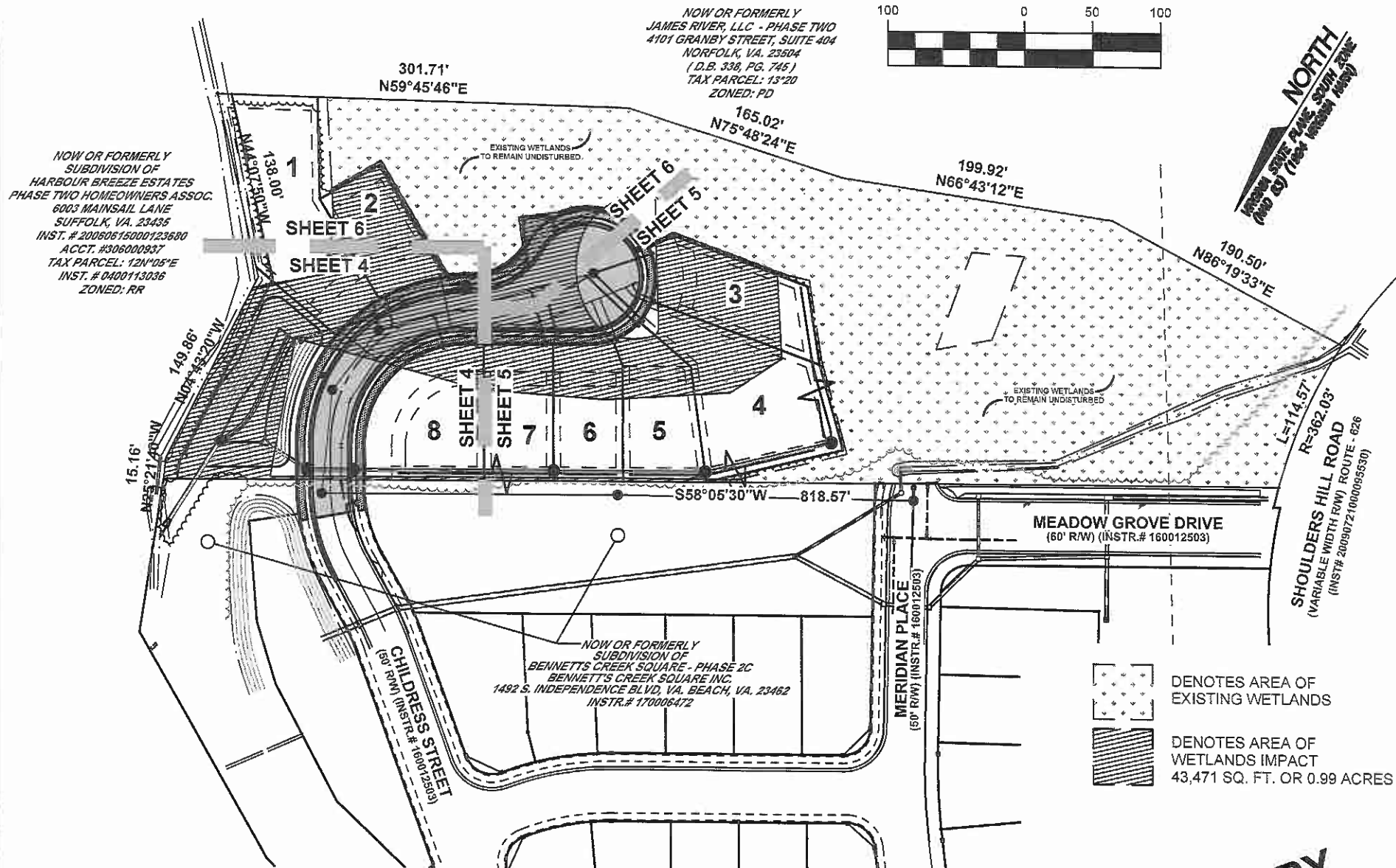
WETLANDS EXHIBIT FOR
SUBDIVISION OF CHILDRESS PROPERTY
 TAX MAP NO. 12*59
 NANSEMOND BOROUGH, SUFFOLK, VIRGINIA

EXISTING CONDITIONS

HOGGARD / EURE ASSOCIATES, P.C.
 Engineers • Surveyors • Planners
 901 PORTCENTRE PARKWAY, SUITE 5 (757)484-9670
 Portsmouth, Virginia 23704

PRELIMINARY

SCALE: 1" = 100'
DATE: 12/11/2017
DRAWN: GDC
REV:
2 OF 8
H&E WO#: 2395.02



NOW OR FORMERLY
 SUBDIVISION OF
 HARBOUR BREEZE ESTATES
 PHASE TWO HOMEOWNERS ASSOC.
 6003 MAINSAIL LANE
 SUFFOLK, VA. 23435
 INST. # 20080615000123680
 ACCT. #306000937
 TAX PARCEL: 121*05*E
 INST. # 0400113036
 ZONED: RR

NOW OR FORMERLY
 JAMES RIVER, LLC - PHASE TWO
 4101 GRANBY STREET, SUITE 404
 NORFOLK, VA. 23504
 (D.B. 338, PG. 745)
 TAX PARCEL: 13*20
 ZONED: PD

NOW OR FORMERLY
 SUBDIVISION OF
 BENNETT'S CREEK SQUARE - PHASE 2C
 BENNETT'S CREEK SQUARE INC.
 1492 S. INDEPENDENCE BLVD, VA. BEACH, VA. 23462
 INSTR. # 170006472



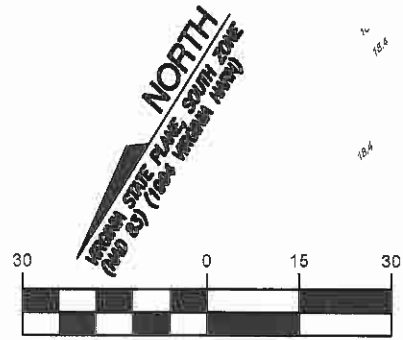
PRELIMINARY

HOGGARD / EURE ASSOCIATES, P.C.
 Engineers • Surveyors • Planners
 901 PORTCENTRE PARKWAY, SUITE 5 (757)484-9670
 Portsmouth, Virginia 23704

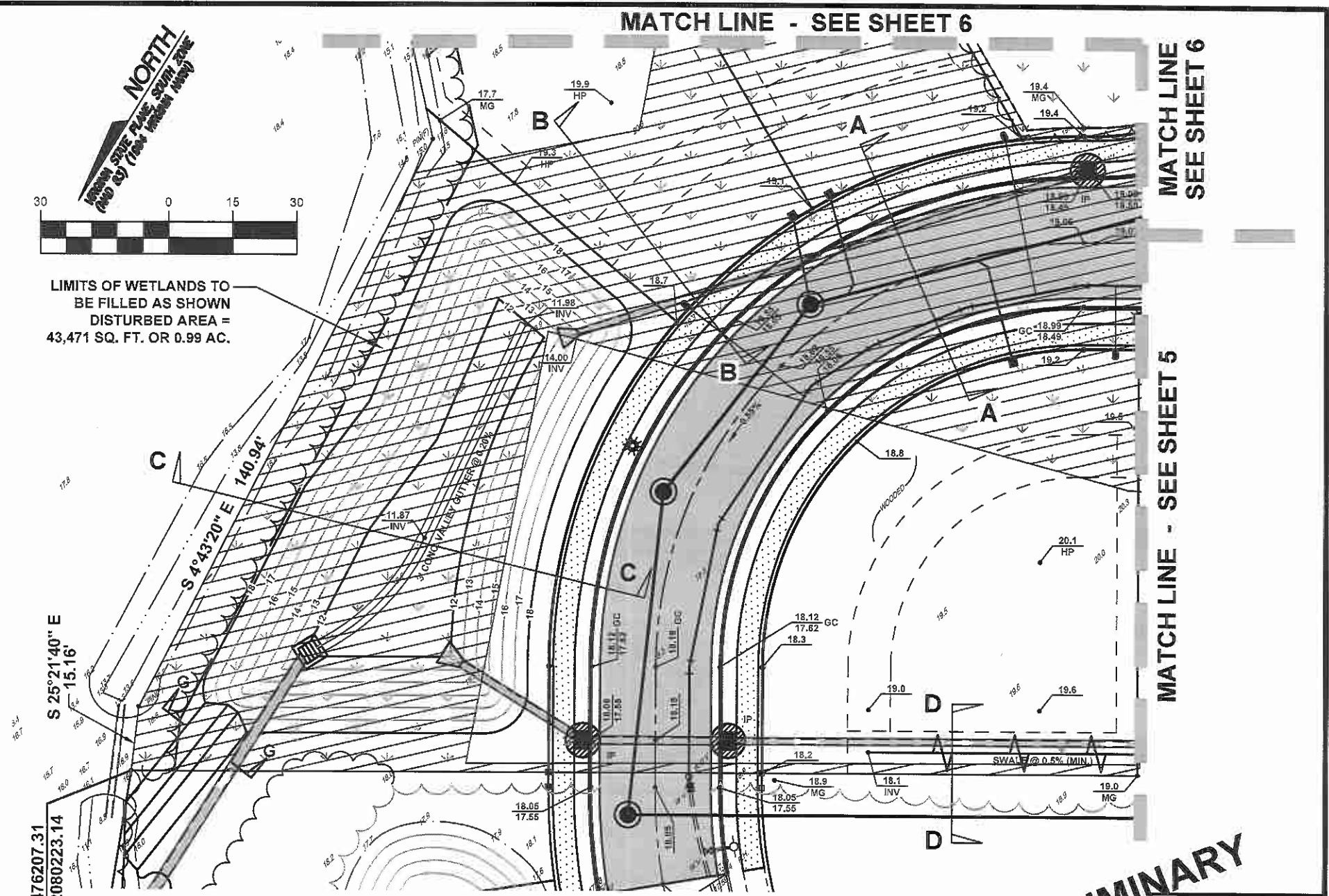
MATCH LINE - SEE SHEET 6

MATCH LINE
SEE SHEET 6

MATCH LINE - SEE SHEET 5



LIMITS OF WETLANDS TO BE FILLED AS SHOWN
DISTURBED AREA =
43,471 SQ. FT. OR 0.99 AC.



S 25°21'40" E
15.16'

S 4°43'20" E
140.94'

N:3476207.31
E:12080223.14

WETLANDS EXHIBIT FOR SUBDIVISION OF CHILDRESS PROPERTY

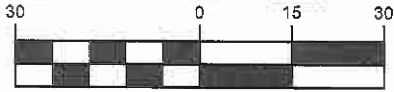
TAX MAP NO. 12*59
NANSEMOND BOROUGH, SUFFOLK, VIRGINIA



HOGGARD / EURE ASSOCIATES, P.C.
Engineers • Surveyors • Planners
901 PORTCENTRE PARKWAY, SUITE 5 (757)484-9670
Portsmouth, Virginia 23704

PRELIMINARY

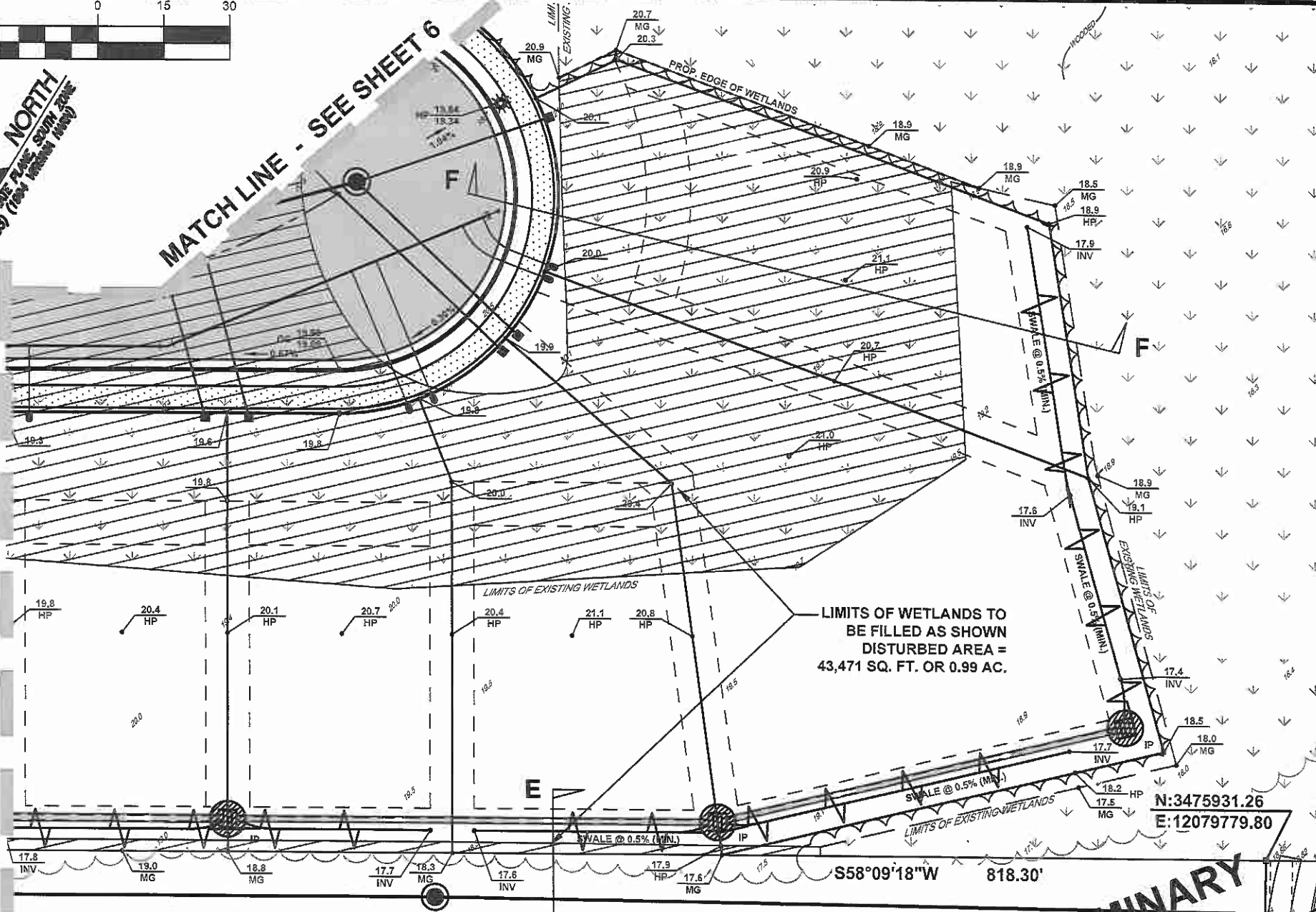
SCALE: 1" = 30'
DATE: 12/11/2017
DRAWN: GDC
REV:
4 OF 8
H&E WO#: 2395.02



NORTH
 HIGHWAY SIDE PLANE SWATH ZONE
 (AND RD) (100' WIDE) (100' WIDE)

MATCH LINE - SEE SHEET 6

MATCH LINE - SEE SHEET 4



LIMITS OF WETLANDS TO BE FILLED AS SHOWN
 DISTURBED AREA =
 43,471 SQ. FT. OR 0.99 AC.

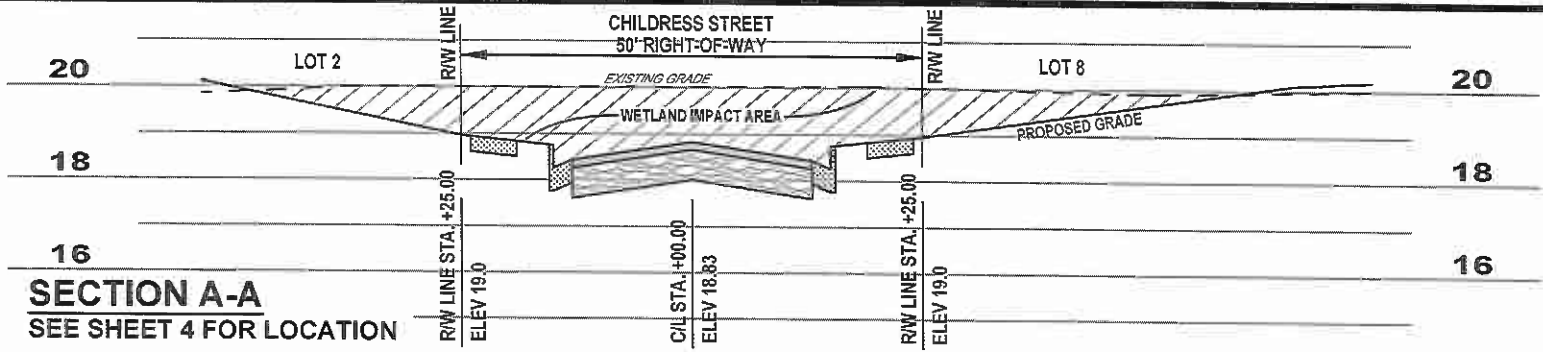
N:3475931.26
 E:12079779.80

PRELIMINARY

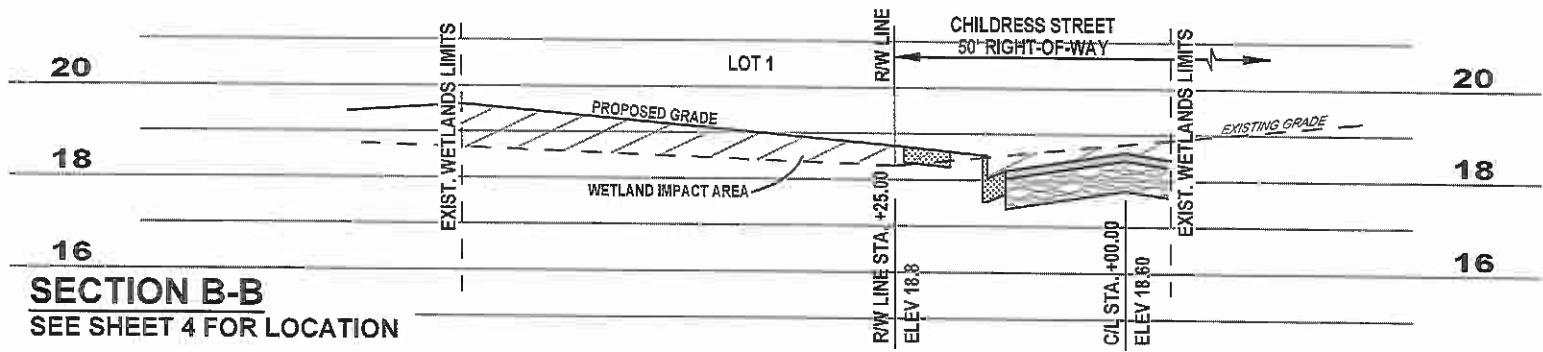
WETLANDS EXHIBIT FOR
SUBDIVISION OF CHILDRESS PROPERTY
 TAX MAP NO. 12*59
 NANSEMOND BOROUGH, SUFFOLK, VIRGINIA

HOGGARD / EURE ASSOCIATES, P.C.
 Engineers • Surveyors • Planners
 901 PORTCENTRE PARKWAY, SUITE 5 (757)484-9670
 Portsmouth, Virginia 23704

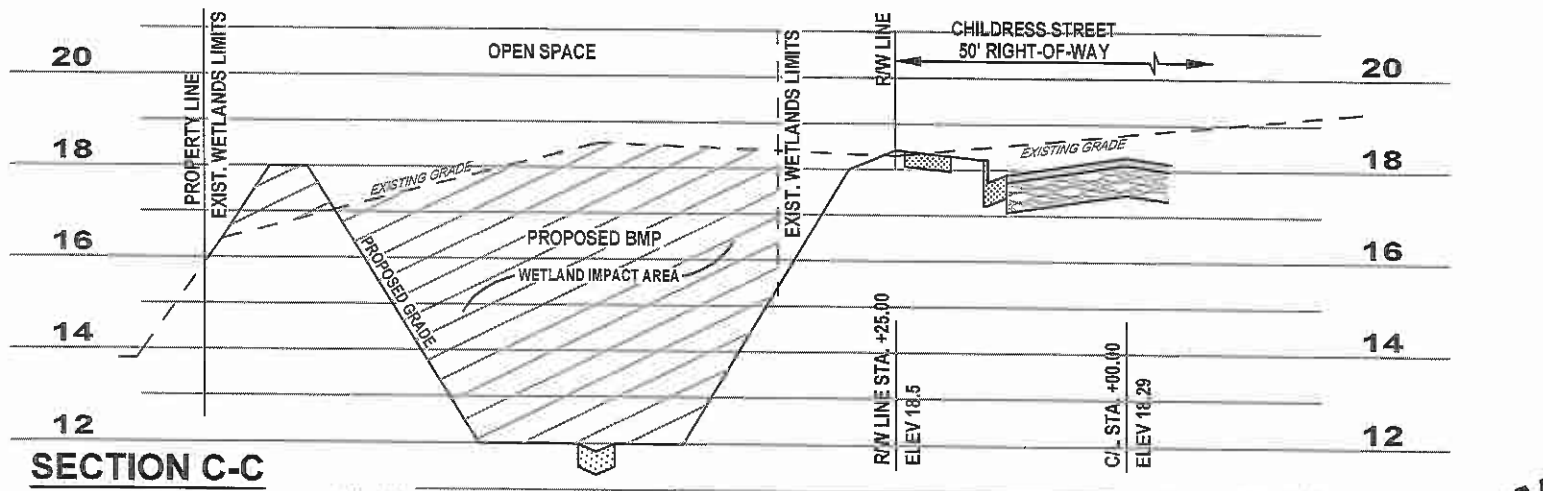
SCALE: 1" = 30'
DATE: 12/11/2017
DRAWN: GDC
REV:
5 OF 8
H&E WO#: 2395.02



SECTION A-A
SEE SHEET 4 FOR LOCATION

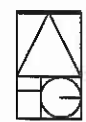


SECTION B-B
SEE SHEET 4 FOR LOCATION



SECTION C-C
SEE SHEET 4 FOR LOCATION

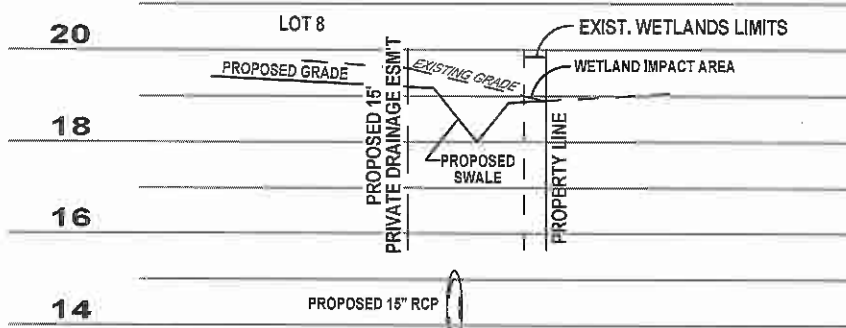
WETLANDS EXHIBIT FOR
SUBDIVISION OF CHILDRESS PROPERTY
 TAX MAP NO. 12*59
 NANSEMOND BOROUGH, SUFFOLK, VIRGINIA



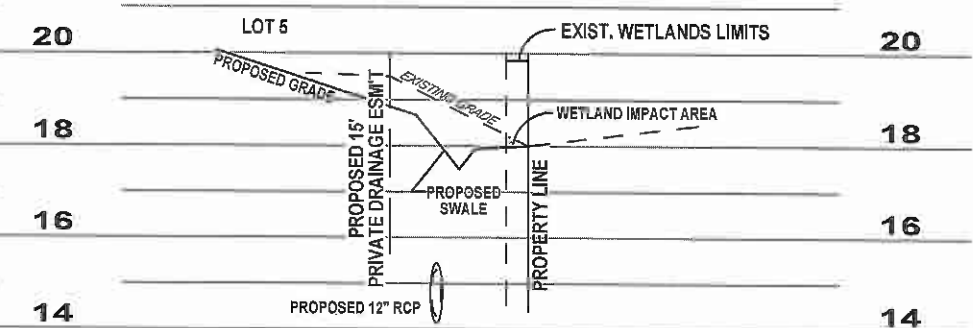
HOGGARD / EURE ASSOCIATES, P.C.
 Engineers • Surveyors • Planners
 901 PORTCENTRE PARKWAY, SUITE 5 (757)484-9670
 Portsmouth, Virginia 23704

PRELIMINARY

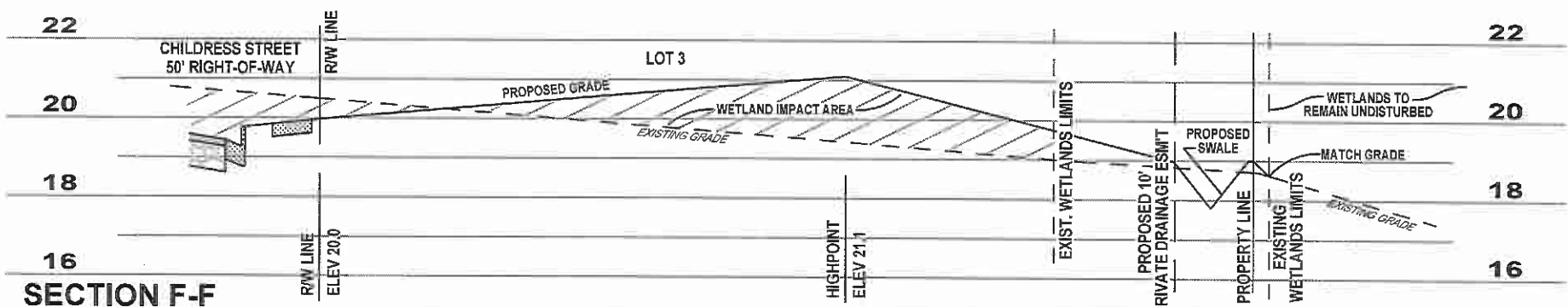
SCALE: 1"=20' HOR. 1"=4' VERT.
DATE: 12/11/2017
DRAWN: GDC
REV:
7 OF 8
H&E WO#: 2395.02



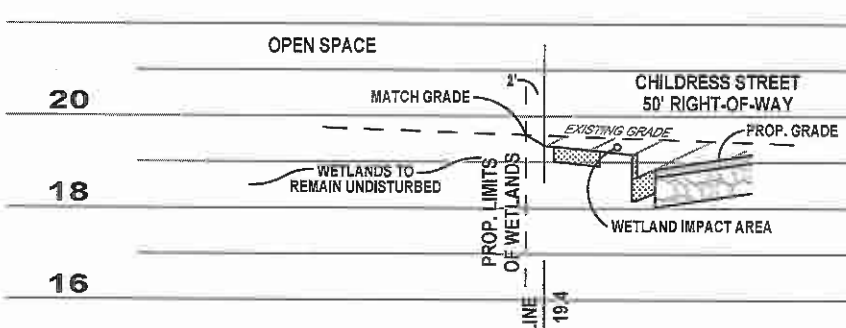
SECTION D-D
SEE SHEET 4 FOR LOCATION



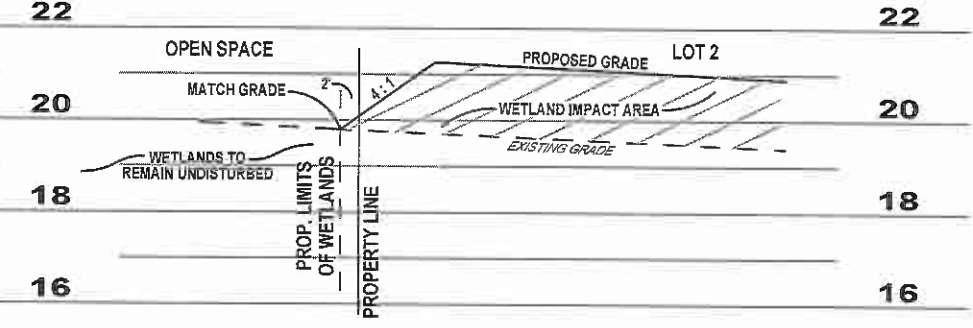
SECTION E-E
SEE SHEET 5 FOR LOCATION



SECTION F-F
SEE SHEET 5 FOR LOCATION



SECTION G-G
SEE SHEET 6 FOR LOCATION



SECTION H-H
SEE SHEET 6 FOR LOCATION

WETLANDS EXHIBIT FOR
SUBDIVISION OF CHILDRESS PROPERTY
 TAX MAP NO. 12*59
 NANSEMOND BOROUGH, SUFFOLK, VIRGINIA



HOGGARD / EURE ASSOCIATES, P.C.
 Engineers • Surveyors • Planners
 901 PORTCENTRE PARKWAY, SUITE 5 (757)484-9670
 Portsmouth, Virginia 23704

PRELIMINARY

SCALE: 1"=20' HOR. 1"=4' VERT.
DATE: 12/11/2017
DRAWN: GDC
REV:
8 OF 8
H&E WO#: 2395.02