

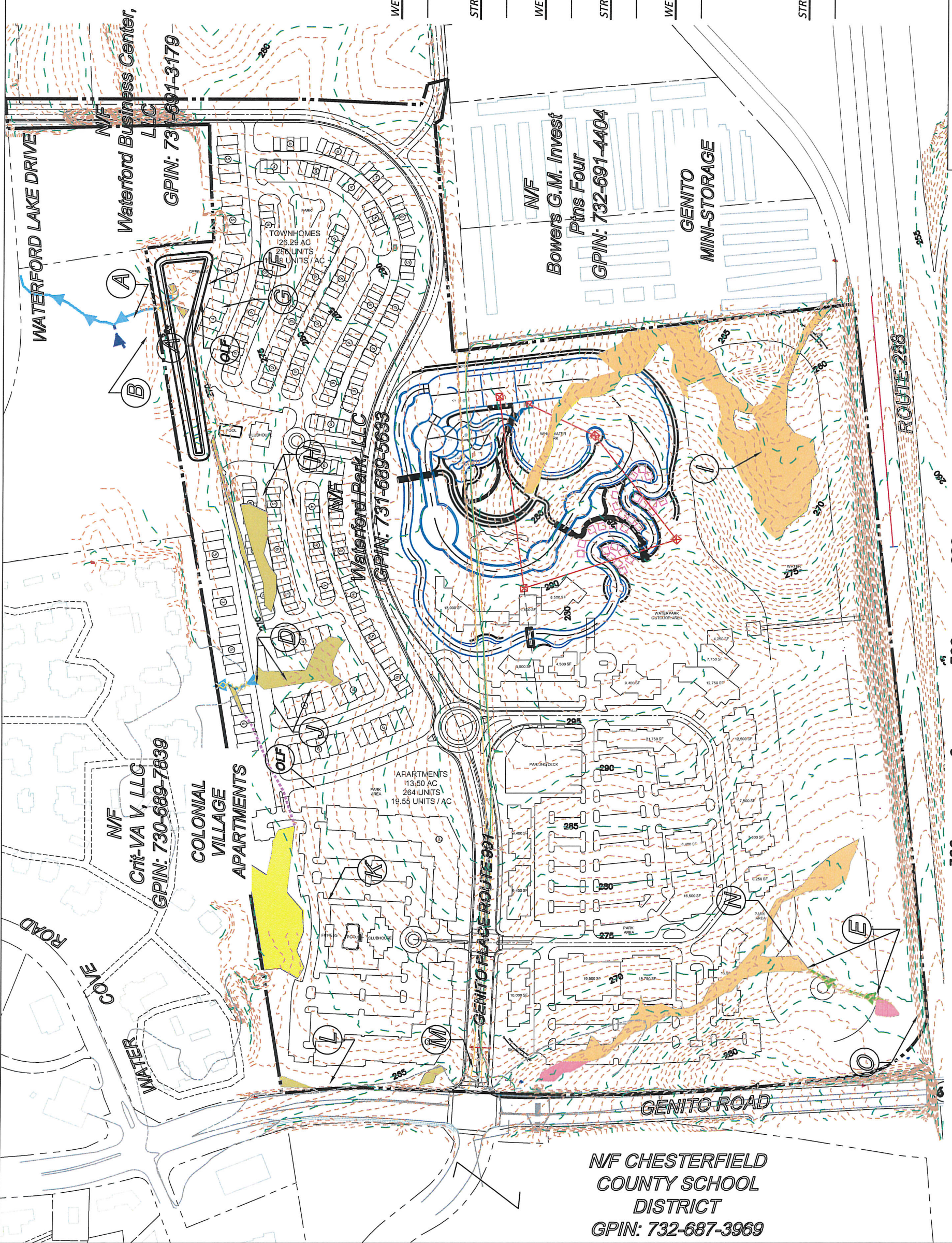


**FEATURE LEGEND**

	ISOLATED WETLANDS
	PFO WETLANDS
	INTERMITTENT STREAM
	EPHEMERAL STREAM
	OVERLAND FLOW
	DITCH

**IMPACT LEGEND**

	INT. STREAM IMPACTS
	DITCH IMPACTS
	PFO WATER PARK IMPACTS
	PFO 288 RAMP IMPACTS
	PFO RESIDENTIAL IMPACTS



**WETLAND IMPACTS - AREA 1 - MAIN LAKE & WHITE WATER PARK**

LOCATION	WETLAND	WETLAND SIZE	WETLAND IMPACTS	WETLAND AVOIDED
N		52,276 S.F.	52,276 S.F.	N/A
I		135,224 S.F.	135,224 S.F.	N/A

**STREAM IMPACTS - AREA 1 - MAIN LAKE & WHITE WATER PARK**

LOCATION	STREAM	INTERMITTENT IMPACTS	DITCH	IMPACTS AVOIDED
E		N/A	258 L.F.	N/A

**WETLAND FILL IMPACTS - AREA 2 - 288 RAMP TO GENITO ROAD**

LOCATION	WETLAND	WETLAND SIZE	WETLAND IMPACTS	WETLAND AVOIDED
N		4,298 S.F.	SEE AREA 1	N/A
O		2,770 S.F.	2,770 S.F.	N/A

**STREAM IMPACTS - AREA 2 - 288 RAMP TO GENITO ROAD**

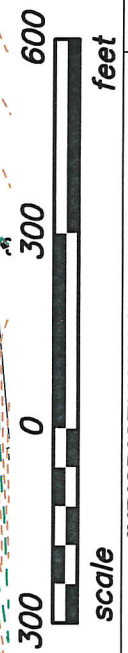
LOCATION	STREAM	INTERMITTENT IMPACTS	EPHEMERAL IMPACTS	IMPACTS AVOIDED
N/A		N/A	N/A	N/A

**WETLAND FILL IMPACTS - AREA 3 - RESIDENTIAL DEVELOPMENT**

LOCATION	WETLAND	WETLAND SIZE	WETLAND IMPACTS	WETLAND AVOIDED	ISOLATED WETLANDS
F		453 S.F.	453 S.F.	N/A	
G		543 S.F.	543 S.F.	N/A	YES
H		19,059 S.F.	19,059 S.F.	N/A	
J		17,910 S.F.	17,910 S.F.	N/A	
K		45,529 S.F.	0 S.F.	45,529 S.F.	YES
L		1,026 S.F.	1,026 S.F.	N/A	YES
M		1,947 S.F.	1,947 S.F.	N/A	YES

**STREAM IMPACTS - AREA 3 - RESIDENTIAL DEVELOPMENT**

LOCATION	STREAM	INTERMITTENT IMPACTS	EPHEMERAL IMPACTS	IMPACTS AVOIDED
A		75 LF	N/A	14 LF
D		113 LF	N/A	N/A



Note: Wetlands & Stream Per Re-Approved  
COE Delineation Date: July, 2017  
Designated with Lettering Symbology

**JURISDICTIONAL WATERS  
OF THE U.S. DELINEATION MAP  
CHESTERFIELD COUNTY, VIRGINIA**

**OVERALL WETLAND IMPACTS**  
ENGINEER: CCM CAD: ACT CKD: WAJ 12/6/2017

**RK&K**  
Responsible People Create Value

2100 EAST CARY STREET, SUITE 309  
RICHMOND, VIRGINIA 23223  
(P) 804 782-1903 (F) 804 782-2142

**RUMMEL, KLEPPER & KAHL, LLP**

NF CHESTERFIELD  
COUNTY SCHOOL  
DISTRICT  
GPIN: 732-687-3969