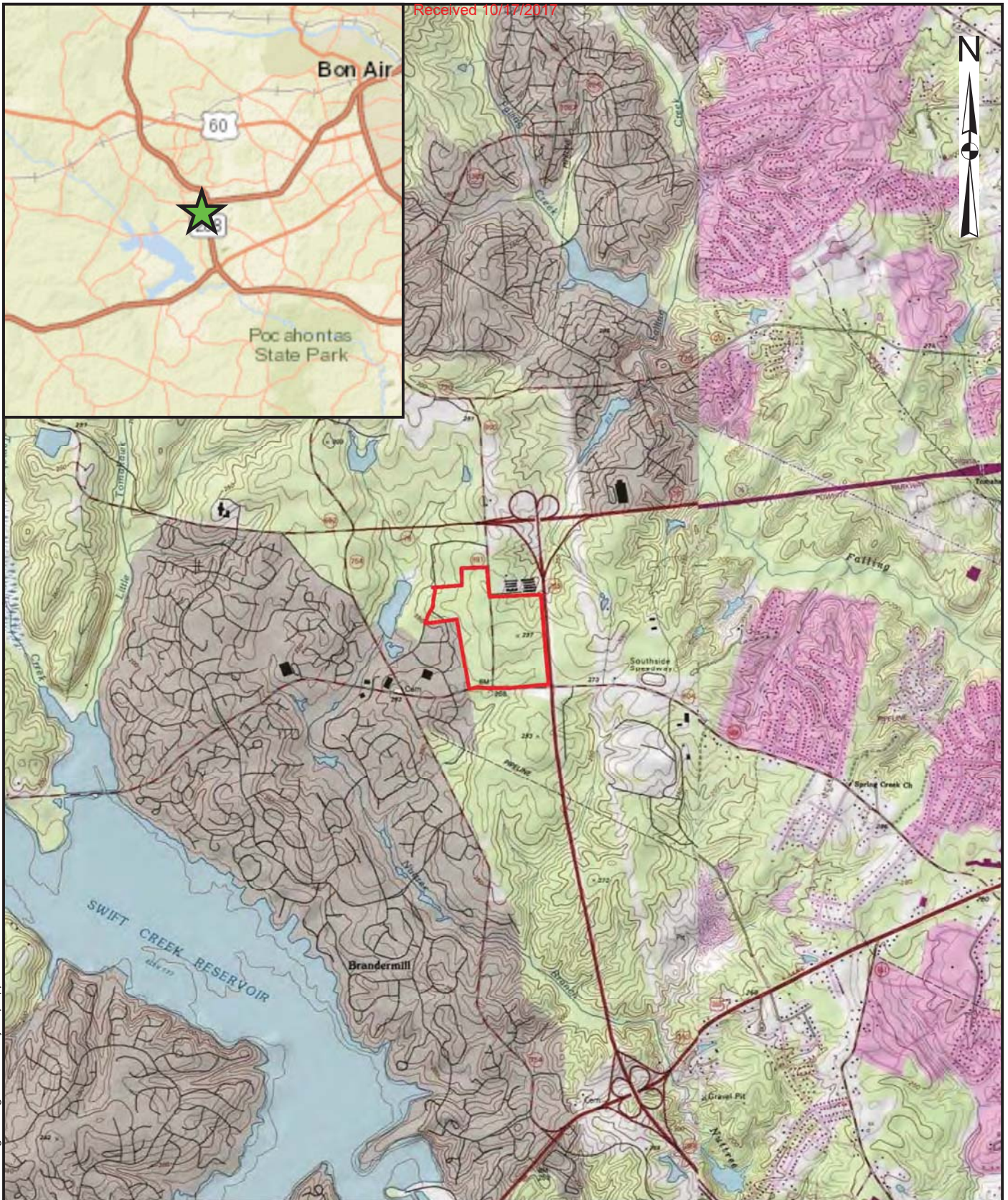


arcgis



8/8/2017 This Map was Created in Schnabel Engineering's Site Vicinity Map Application

Sources: Esri, HERE, DeLorme, USGS, Intermap, INCREMENT P, NRCan, Esri Japan, METI, Esri China (Hong Kong), Esri Korea, Esri (Thailand), MapmyIndia, NGCC, © OpenStreetMap contributors, and the GIS User Community
 Copyright:© 2013 National Geographic Society, i-cubed

NOT TO SCALE



WATERFORD PARK WATER WELL LOCATION STUDY
 ROUTE 288 AND GENITO ROAD, CHESTERFIELD
 COUNTY, VA

PROJECT NO. 17C13128

SITE VICINITY
MAP

FIGURE 1