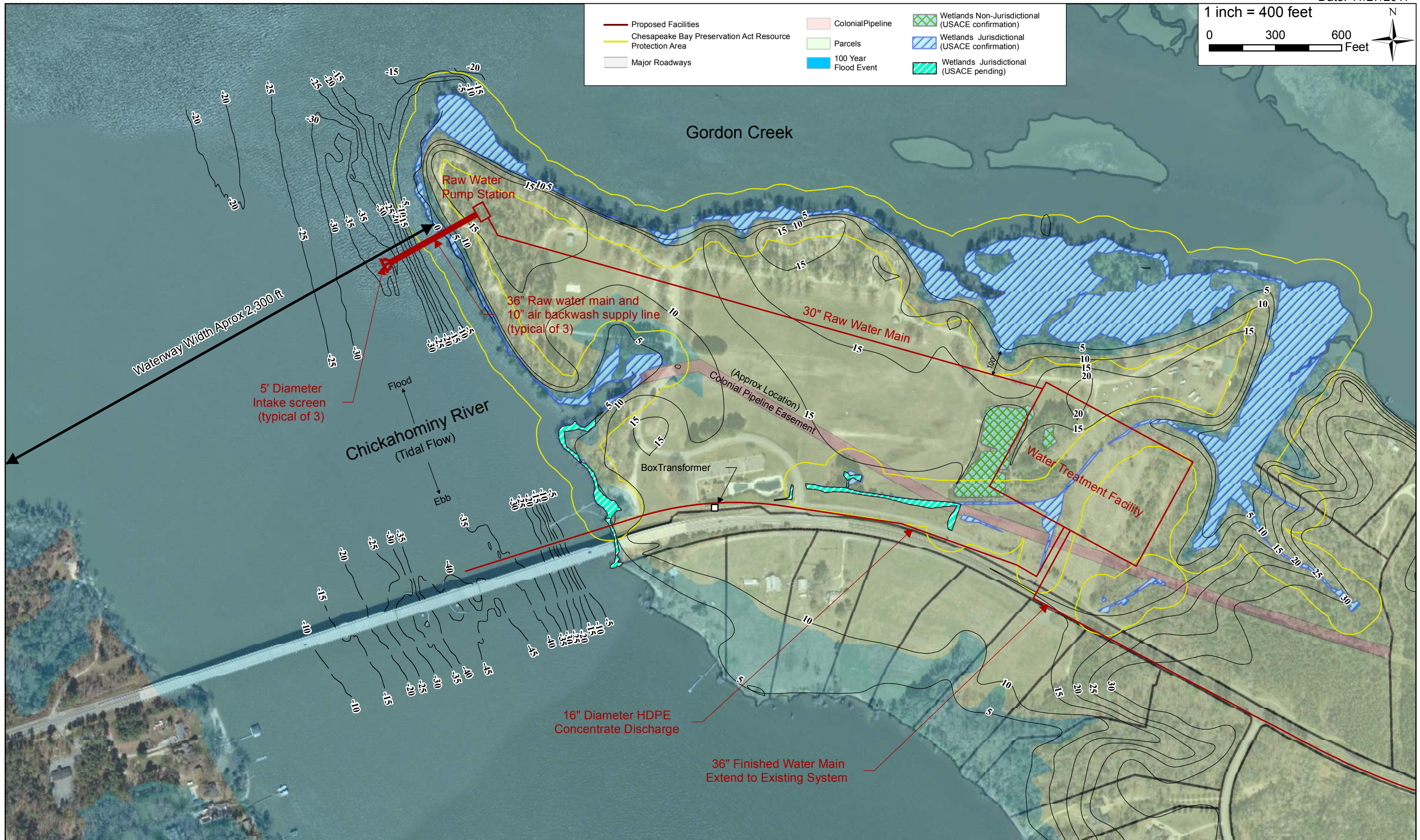
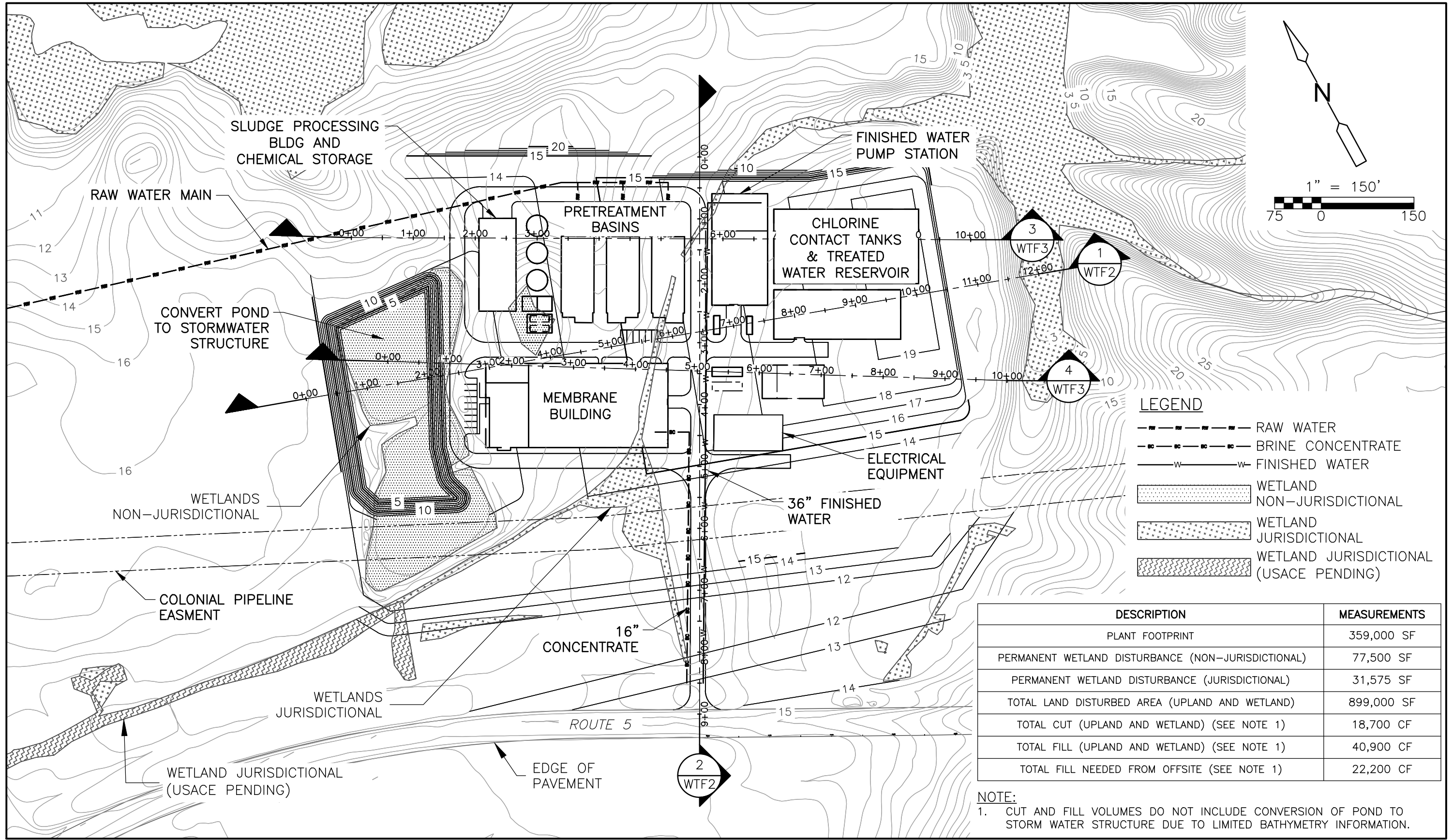


Proposed Facilities	Colonial Pipeline	Wetlands Non-Jurisdictional (USACE confirmation)
Chesapeake Bay Preservation Act Resource Protection Area	Parcels	Wetlands Jurisdictional (USACE confirmation)
Major Roadways	100 Year Flood Event	Wetlands Jurisdictional (USACE pending)





© 2017 CDM SMITH ALL RIGHTS RESERVED. THESE DOCUMENTS AND DESIGNS PROVIDED BY PROFESSIONAL SERVICE, INCORPORATED HEREIN, ARE THE PROPERTY OF CDM SMITH AND ARE NOT TO BE USED, IN WHOLE OR PART, FOR ANY OTHER PROJECT WITHOUT THE WRITTEN AUTHORIZATION OF CDM SMITH.



**LEGEND**

- RAW WATER
- BRINE CONCENTRATE
- FINISHED WATER
- WETLAND NON-JURISDICTIONAL
- WETLAND JURISDICTIONAL
- WETLAND JURISDICTIONAL (USACE PENDING)

DESCRIPTION	MEASUREMENTS
PLANT FOOTPRINT	359,000 SF
PERMANENT WETLAND DISTURBANCE (NON-JURISDICTIONAL)	77,500 SF
PERMANENT WETLAND DISTURBANCE (JURISDICTIONAL)	31,575 SF
TOTAL LAND DISTURBED AREA (UPLAND AND WETLAND)	899,000 SF
TOTAL CUT (UPLAND AND WETLAND) (SEE NOTE 1)	18,700 CF
TOTAL FILL (UPLAND AND WETLAND) (SEE NOTE 1)	40,900 CF
TOTAL FILL NEEDED FROM OFFSITE (SEE NOTE 1)	22,200 CF

**NOTE:**  
 1. CUT AND FILL VOLUMES DO NOT INCLUDE CONVERSION OF POND TO STORM WATER STRUCTURE DUE TO LIMITED BATHYMETRY INFORMATION.



Figure WTF-1  
 CHICKAHOMINY RIVERFRONT PARK WATER TREATMENT FACILITY  
 SITE PLAN

© 2017 CDM SMITH ALL RIGHTS RESERVED. REUSE OF DOCUMENTS, THESE DOCUMENTS AND DESIGNS PROVIDED BY PROFESSIONAL SERVICE, INCORPORATED HEREIN, ARE THE PROPERTY OF CDM SMITH AND ARE NOT TO BE USED, IN WHOLE OR PART, FOR ANY OTHER PROJECT WITHOUT THE WRITTEN AUTHORIZATION OF CDM SMITH.

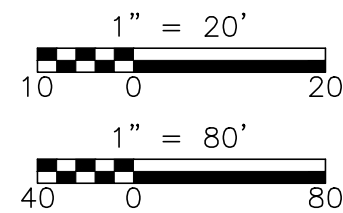
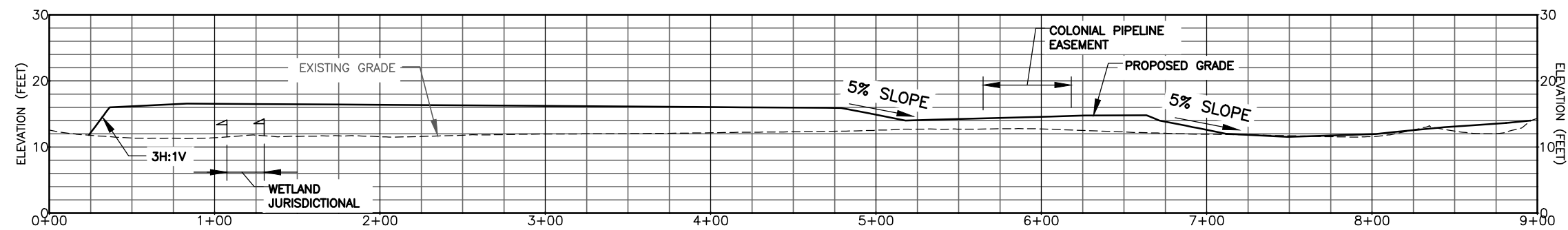
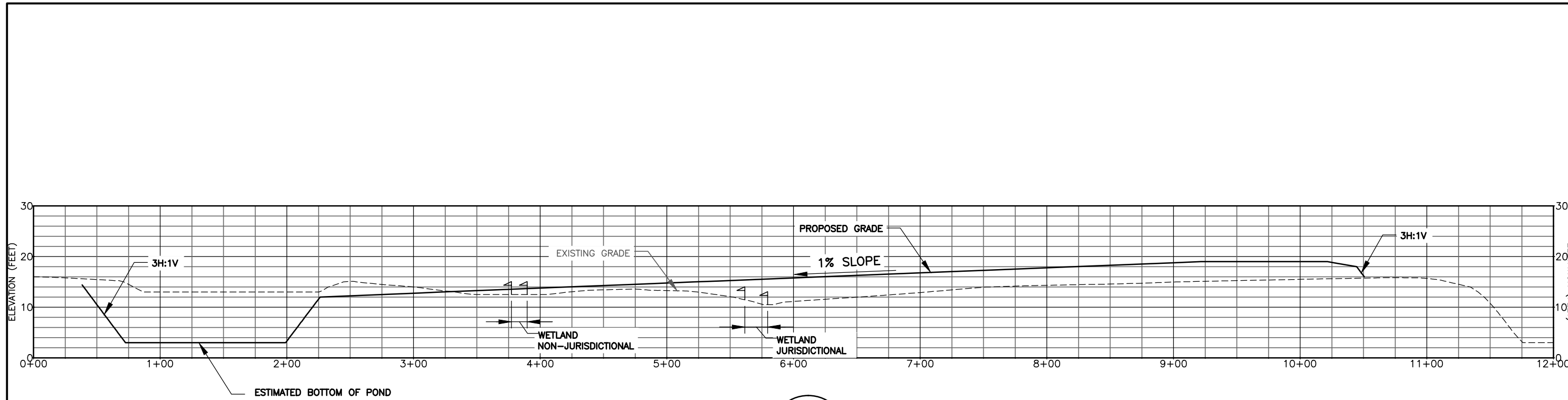
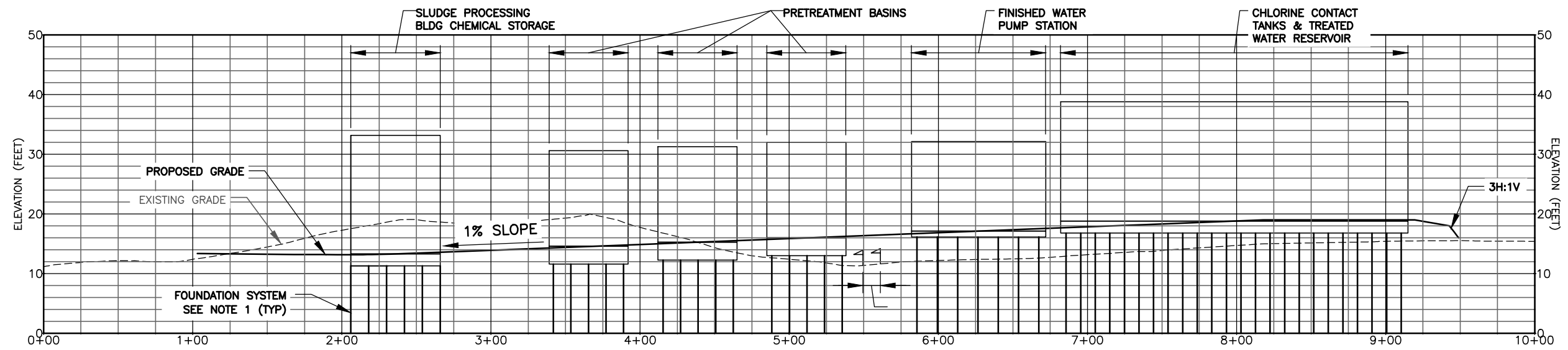


Figure WTF-2  
CHICKAHOMINY RIVERFRONT PARK WATER TREATMENT FACILITY  
SITE SECTION

© 2017 CDM SMITH. ALL RIGHTS RESERVED. REUSE OF DOCUMENTS, THESE DOCUMENTS AND DESIGNS PROVIDED BY PROFESSIONAL SERVICE, INCORPORATED HEREIN, ARE THE PROPERTY OF CDM SMITH AND ARE NOT TO BE USED, IN WHOLE OR PART, FOR ANY OTHER PROJECT WITHOUT THE WRITTEN AUTHORIZATION OF CDM SMITH.

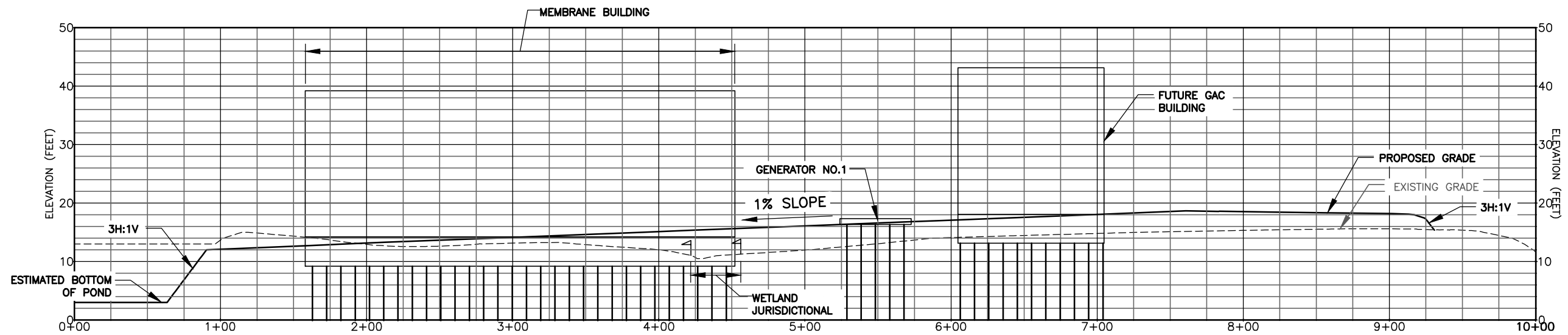


### SECTION

3

VERTICAL SCALE: 1" = 20'  
HORIZONTAL SCALE: 1" = 80'

WTF1



### SECTION

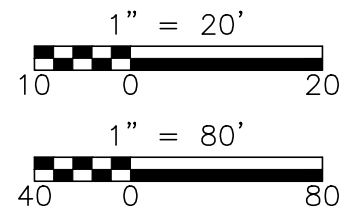
4

VERTICAL SCALE: 1" = 20'  
HORIZONTAL SCALE: 1" = 80'

WTF1

**NOTE:**

- FOUNDATION SYSTEM SHOWN FOR ILLUSTRATION PURPOSES ONLY. DETAILS TO BE FINALIZED DURING DESIGN PHASE





© 2015 CDM SMITH ALL RIGHTS RESERVED. REUSE OF DOCUMENTS: THESE DOCUMENTS AND DESIGNS PROVIDED BY PROFESSIONAL SERVICE, INCORPORATED HEREIN, ARE THE PROPERTY OF CDM SMITH AND ARE NOT TO BE USED, IN WHOLE OR PART, FOR ANY OTHER PROJECT WITHOUT THE WRITTEN AUTHORIZATION OF CDM SMITH.





© 2015 CDM SMITH ALL RIGHTS RESERVED. REUSE OF DOCUMENTS: THESE DOCUMENTS AND DESIGNS PROVIDED BY PROFESSIONAL SERVICE, INCORPORATED HEREIN, ARE THE PROPERTY OF CDM SMITH AND ARE NOT TO BE USED, IN WHOLE OR PART, FOR ANY OTHER PROJECT WITHOUT THE WRITTEN AUTHORIZATION OF CDM SMITH.



MATCH LINE SHEET SEE FIGURE 2 FOR CONTINUATION

**LEGEND:**

	R.O.W.
	PROPERTY LINE
	EXISTING WATER
	EXISTING SEWER
	EXISTING STORM WATER
	EXISTING OVERHEAD ELECTRIC
	EXISTING UNDERGROUND ELECTRIC
	EXISTING GAS
	ABANDONED ELECTRIC
	PROPOSED 36" WATER
	EXISTING CONTOUR
	AERIAL COX COMMUNICATIONS
	UNDERGROUND COX COMMUNICATIONS
	WETLAND DELINEATION
	WETLANDS AREA No.
	HYDRANT

- REFERENCES:**
1. AERIAL MAP, PARCEL MAP, AND GROUND CONTOUR DATA PROVIDED BY JAMES CITY COUNTY, SEPTEMBER 2017.
  2. EXISTING WATER AND SEWER LOCATIONS BASED ON GIS MAP PROVIDED BY JAMES CITY SERVICE AUTHORITY.
  3. EXISTING STORMWATER LINES BASED ON SHAPEFILES PROVIDED BY JAMES CITY COUNTY, OCTOBER 2017; FILE DID NOT INCLUDE CULVERT ROAD CROSSINGS. APPROXIMATE LOCATION OF CULVERT ROAD CROSSINGS WERE ESTIMATED BASED ON ROAD SIGNAGE AND FIELD OBSERVATION.
  4. APPROXIMATE LOCATION OF EXISTING ELECTRIC BASED ON PDF FILE PROVIDED BY DOMINION POWER, SEPTEMBER 2017.
  5. APPROXIMATE LOCATION OF EXISTING GAS BASED ON PDF FILE PROVIDED BY VIRGINIA NATURAL GAS, SEPTEMBER 2017.
  6. APPROXIMATE LOCATION OF COX COMMUNICATION LINE BASED ON PDF FILES PROVIDED BY COX, OCTOBER 2017.
  7. WETLAND LOCATION BASED ON FIELD DELINEATION CONDUCTED BY CDM SMITH, OCTOBER 2017.

WETLAND AREA NO.	TEMPORARY WETLAND DISTURBANCE
1	229.89 SF
2	537.30 SF
3	229.63 SF

NOTE: FOLLOWING PIPE INSTALLATION, WETLAND AREAS WILL BE RESTORED TO PRE-CONSTRUCTION CONTOURS AND SEEDED WITH A NATIVE HERBACEOUS WETLAND SEED MIX.

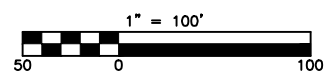


Figure No. FW-1  
CHICKAHOMINY RIVERFRONT PARK WTF FINISHED WATER MAIN  
NOVEMBER 2017



© 2015 CDM SMITH ALL RIGHTS RESERVED. REUSE OF DOCUMENTS: THESE DOCUMENTS AND DESIGNS PROVIDED BY PROFESSIONAL SERVICE, INCORPORATED HEREIN, ARE THE PROPERTY OF CDM SMITH AND ARE NOT TO BE USED, IN WHOLE OR PART, FOR ANY OTHER PROJECT WITHOUT THE WRITTEN AUTHORIZATION OF CDM SMITH.



MATCH LINE SHEET SEE FIG 1 FOR CONTINUATION

MATCH LINE SHEET SEE FIG 3 FOR CONTINUATION

**LEGEND:**

	R.O.W.
	PROPERTY LINE
	EXISTING WATER
	EXISTING SEWER
	EXISTING STORM WATER
	EXISTING OVERHEAD ELECTRIC
	EXISTING UNDERGROUND ELECTRIC
	EXISTING GAS
	ABANDONED ELECTRIC
	PROPOSED 36" WATER
	EXISTING CONTOUR
	AERIAL COX COMMUNICATIONS
	UNDERGROUND COX COMMUNICATIONS
	WETLAND DELINEATION
	WETLANDS AREA No.
	HYDRANT

**REFERENCES:**

1. AERIAL MAP, PARCEL MAP, AND GROUND CONTOUR DATA PROVIDED BY JAMES CITY COUNTY, SEPTEMBER 2017.
2. EXISTING WATER AND SEWER LOCATIONS BASED ON GIS MAP PROVIDED BY JAMES CITY SERVICE AUTHORITY.
3. EXISTING STORMWATER LINES BASED ON SHAPEFILES PROVIDED BY JAMES CITY COUNTY, OCTOBER 2017; FILE DID NOT INCLUDE CULVERT ROAD CROSSINGS. APPROXIMATE LOCATION OF CULVERT ROAD CROSSINGS WERE ESTIMATED BASED ON ROAD SIGNAGE AND FIELD OBSERVATION.
4. APPROXIMATE LOCATION OF EXISTING ELECTRIC BASED ON PDF FILE PROVIDED BY DOMINION POWER, SEPTEMBER 2017.
5. APPROXIMATE LOCATION OF EXISTING GAS BASED ON PDF FILE PROVIDED BY VIRGINIA NATURAL GAS, SEPTEMBER 2017.
6. APPROXIMATE LOCATION OF COX COMMUNICATION LINE BASED ON PDF FILES PROVIDED BY COX, OCTOBER 2017.
7. WETLAND LOCATION BASED ON FIELD DELINEATION CONDUCTED BY CDM SMITH, OCTOBER 2017.

WETLAND AREA NO.	TEMPORARY WETLAND DISTURBANCE (SF)
4	338.61 SF
5	3,419.74 SF
6	4,453.63 SF

NOTE: FOLLOWING PIPE INSTALLATION, WETLAND AREAS WILL BE RESTORED TO PRE-CONSTRUCTION CONTOURS AND SEEDING WITH A NATIVE HERBACEOUS WETLAND SEED MIX.

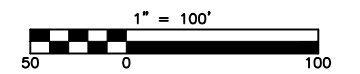


Figure No. FW-2  
CHICKAHOMINY RIVERFRONT PARK WTF FINISHED WATER MAIN  
NOVEMBER 2017



© 2015 CDM SMITH ALL RIGHTS RESERVED. REUSE OF DOCUMENTS: THESE DOCUMENTS AND DESIGNS PROVIDED BY PROFESSIONAL SERVICE, INCORPORATED HEREIN, ARE THE PROPERTY OF CDM SMITH AND ARE NOT TO BE USED, IN WHOLE OR PART, FOR ANY OTHER PROJECT WITHOUT THE WRITTEN AUTHORIZATION OF CDM SMITH.



MATCH LINE SHEET SEE FIG2 FOR CONTINUATION

MATCH LINE SHEET SEE FIG4 FOR CONTINUATION

**LEGEND:**

	R.O.W.
	PROPERTY LINE
	EXISTING WATER
	EXISTING SEWER
	EXISTING STORM WATER
	EXISTING OVERHEAD ELECTRIC
	EXISTING UNDERGROUND ELECTRIC
	EXISTING GAS
	ABANDONED ELECTRIC
	PROPOSED 36" WATER
	EXISTING CONTOUR
	AERIAL COX COMMUNICATIONS
	UNDERGROUND COX COMMUNICATIONS
	WETLAND DELINEATION
	WETLANDS AREA No.
	HYDRANT

**REFERENCES:**

1. AERIAL MAP, PARCEL MAP, AND GROUND CONTOUR DATA PROVIDED BY JAMES CITY COUNTY, SEPTEMBER 2017.
2. EXISTING WATER AND SEWER LOCATIONS BASED ON GIS MAP PROVIDED BY JAMES CITY SERVICE AUTHORITY.
3. EXISTING STORMWATER LINES BASED ON SHAPEFILES PROVIDED BY JAMES CITY COUNTY, OCTOBER 2017; FILE DID NOT INCLUDE CULVERT ROAD CROSSINGS. APPROXIMATE LOCATION OF CULVERT ROAD CROSSINGS WERE ESTIMATED BASED ON ROAD SIGNAGE AND FIELD OBSERVATION.
4. APPROXIMATE LOCATION OF EXISTING ELECTRIC BASED ON PDF FILE PROVIDED BY DOMINION POWER, SEPTEMBER 2017.
5. APPROXIMATE LOCATION OF EXISTING GAS BASED ON PDF FILE PROVIDED BY VIRGINIA NATURAL GAS, SEPTEMBER 2017.
6. APPROXIMATE LOCATION OF COX COMMUNICATION LINE BASED ON PDF FILES PROVIDED BY COX, OCTOBER 2017.
7. WETLAND LOCATION BASED ON FIELD DELINEATION CONDUCTED BY CDM SMITH, OCTOBER 2017.

WETLAND AREA NO.	TEMPORARY WETLAND DISTURBANCE (SF)
7	5,953.92 SF
8	6,583.99 SF

NOTE: FOLLOWING PIPE INSTALLATION, WETLAND AREAS WILL BE RESTORED TO PRE-CONSTRUCTION CONTOURS AND SEEDED WITH A NATIVE HERBACEOUS WETLAND SEED MIX.

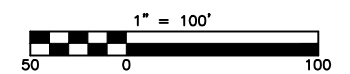


Figure No. FW-3  
CHICKAHOMINY RIVERFRONT PARK WTF FINISHED WATER MAIN  
NOVEMBER 2017



© 2015 CDM SMITH ALL RIGHTS RESERVED. REUSE OF DOCUMENTS: THESE DOCUMENTS AND DESIGNS PROVIDED BY PROFESSIONAL SERVICE, INCORPORATED HEREIN, ARE THE PROPERTY OF CDM SMITH AND ARE NOT TO BE USED, IN WHOLE OR PART, FOR ANY OTHER PROJECT WITHOUT THE WRITTEN AUTHORIZATION OF CDM SMITH.



MATCH LINE SHEET SEE FIG 3 FOR CONTINUATION

MATCH LINE SHEET SEE FIG 3 FOR CONTINUATION

**LEGEND:**

	R.O.W.
	PROPERTY LINE
	EXISTING WATER
	EXISTING SEWER
	EXISTING STORM WATER
	EXISTING OVERHEAD ELECTRIC
	EXISTING UNDERGROUND ELECTRIC
	EXISTING GAS
	ABANDONED ELECTRIC
	PROPOSED 36" WATER
	EXISTING CONTOUR
	AERIAL COX COMMUNICATIONS
	UNDERGROUND COX COMMUNICATIONS
	WETLAND DELINEATION
	WETLANDS AREA No.
	HYDRANT

**REFERENCES:**

1. AERIAL MAP, PARCEL MAP, AND GROUND CONTOUR DATA PROVIDED BY JAMES CITY COUNTY, SEPTEMBER 2017.
2. EXISTING WATER AND SEWER LOCATIONS BASED ON GIS MAP PROVIDED BY JAMES CITY SERVICE AUTHORITY.
3. EXISTING STORMWATER LINES BASED ON SHAPEFILES PROVIDED BY JAMES CITY COUNTY, OCTOBER 2017; FILE DID NOT INCLUDE CULVERT ROAD CROSSINGS. APPROXIMATE LOCATION OF CULVERT ROAD CROSSINGS WERE ESTIMATED BASED ON ROAD SIGNAGE AND FIELD OBSERVATION.
4. APPROXIMATE LOCATION OF EXISTING ELECTRIC BASED ON PDF FILE PROVIDED BY DOMINION POWER, SEPTEMBER 2017.
5. APPROXIMATE LOCATION OF EXISTING GAS BASED ON PDF FILE PROVIDED BY VIRGINIA NATURAL GAS, SEPTEMBER 2017.
6. APPROXIMATE LOCATION OF COX COMMUNICATION LINE BASED ON PDF FILES PROVIDED BY COX, OCTOBER 2017.
7. WETLAND LOCATION BASED ON FIELD DELINEATION CONDUCTED BY CDM SMITH, OCTOBER 2017.

WETLAND AREA NO.	TEMPORARY WETLAND DISTURBANCE (SF)
9	10,548.63 SF
10	351.05 SF
11	1,650.90 SF

NOTE: FOLLOWING PIPE INSTALLATION, WETLAND AREAS WILL BE RESTORED TO PRE-CONSTRUCTION CONTOURS AND SEEDED WITH A NATIVE HERBACEOUS WETLAND SEED MIX.

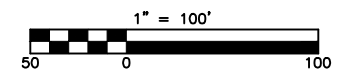


Figure No. FW-4  
CHICKAHOMINY RIVERFRONT PARK WTF FINISHED WATER MAIN  
NOVEMBER 2017



© 2015 CDM SMITH ALL RIGHTS RESERVED. REUSE OF DOCUMENTS: THESE DOCUMENTS AND DESIGNS PROVIDED BY PROFESSIONAL SERVICE, INCORPORATED HEREIN, ARE THE PROPERTY OF CDM SMITH AND ARE NOT TO BE USED, IN WHOLE OR PART, FOR ANY OTHER PROJECT WITHOUT THE WRITTEN AUTHORIZATION OF CDM SMITH.



MATCH LINE SHEET SEE FIG 4 FOR CONTINUATION

MATCH LINE SHEET SEE FIG 6 FOR CONTINUATION

**LEGEND:**

	R.O.W.
	PROPERTY LINE
	EXISTING WATER
	EXISTING SEWER
	EXISTING STORM WATER
	EXISTING OVERHEAD ELECTRIC
	EXISTING UNDERGROUND ELECTRIC
	EXISTING GAS
	ABANDONED ELECTRIC
	PROPOSED 36" WATER
	EXISTING CONTOUR
	AERIAL COX COMMUNICATIONS
	UNDERGROUND COX COMMUNICATIONS
	WETLAND DELINEATION
	WETLANDS AREA No.
	HYDRANT

- REFERENCES:**
1. AERIAL MAP, PARCEL MAP, AND GROUND CONTOUR DATA PROVIDED BY JAMES CITY COUNTY, SEPTEMBER 2017.
  2. EXISTING WATER AND SEWER LOCATIONS BASED ON GIS MAP PROVIDED BY JAMES CITY SERVICE AUTHORITY.
  3. EXISTING STORMWATER LINES BASED ON SHAPEFILES PROVIDED BY JAMES CITY COUNTY, OCTOBER 2017; FILE DID NOT INCLUDE CULVERT ROAD CROSSINGS. APPROXIMATE LOCATION OF CULVERT ROAD CROSSINGS WERE ESTIMATED BASED ON ROAD SIGNAGE AND FIELD OBSERVATION.
  4. APPROXIMATE LOCATION OF EXISTING ELECTRIC BASED ON PDF FILE PROVIDED BY DOMINION POWER, SEPTEMBER 2017.
  5. APPROXIMATE LOCATION OF EXISTING GAS BASED ON PDF FILE PROVIDED BY VIRGINIA NATURAL GAS, SEPTEMBER 2017.
  6. APPROXIMATE LOCATION OF COX COMMUNICATION LINE BASED ON PDF FILES PROVIDED BY COX, OCTOBER 2017.
  7. WETLAND LOCATION BASED ON FIELD DELINEATION CONDUCTED BY CDM SMITH, OCTOBER 2017.

WETLAND AREA NO.	TEMPORARY WETLAND DISTURBANCE (SF)
12	1,219.25 SF

NOTE: FOLLOWING PIPE INSTALLATION, WETLAND AREAS WILL BE RESTORED TO PRE-CONSTRUCTION CONTOURS AND SEEDED WITH A NATIVE HERBACEOUS WETLAND SEED MIX.

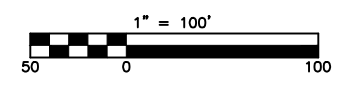
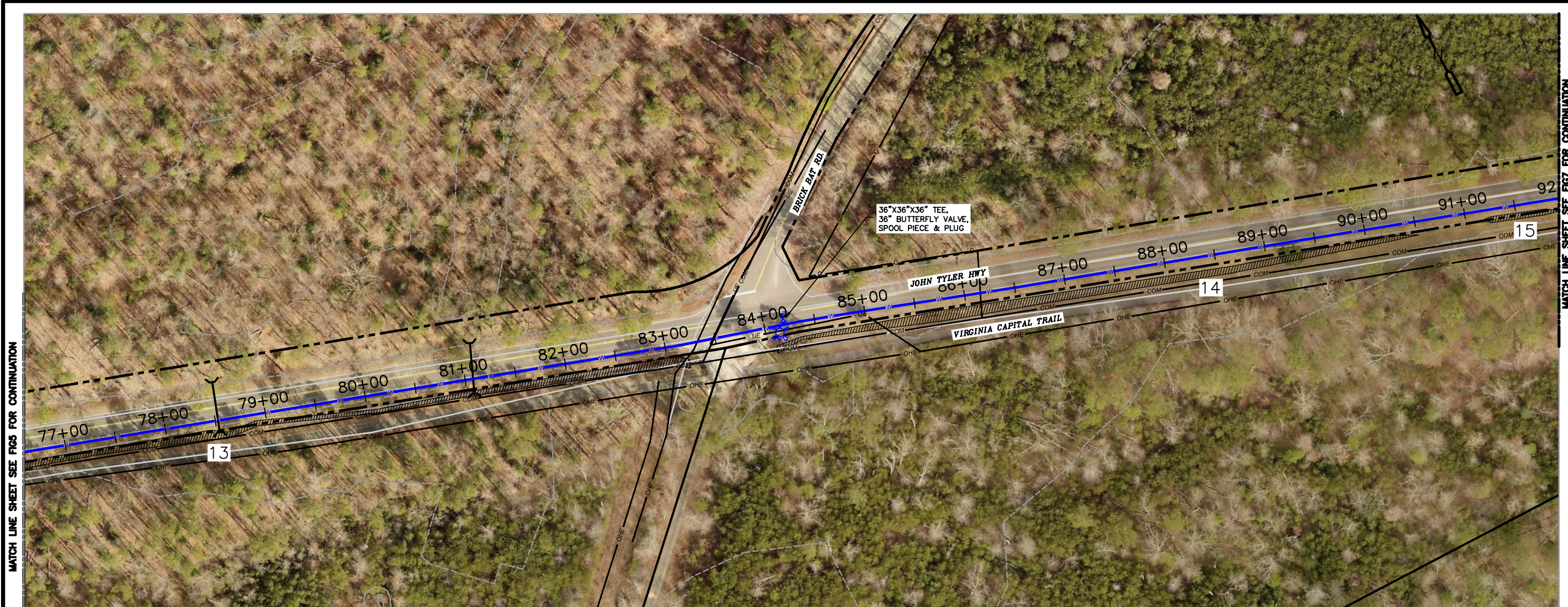


Figure No. FW-5  
CHICKAHOMINY RIVERFRONT PARK WTF FINISHED WATER MAIN  
NOVEMBER 2017



© 2015 CDM SMITH ALL RIGHTS RESERVED. REUSE OF DOCUMENTS: THESE DOCUMENTS AND DESIGNS PROVIDED BY PROFESSIONAL SERVICE, INCORPORATED HEREIN, ARE THE PROPERTY OF CDM SMITH AND ARE NOT TO BE USED, IN WHOLE OR PART, FOR ANY OTHER PROJECT WITHOUT THE WRITTEN AUTHORIZATION OF CDM SMITH.



MATCH LINE SHEET SEE FIGS FOR CONTINUATION

MATCH LINE SHEET SEE FIG7 FOR CONTINUATION

**LEGEND:**

	R.O.W.
	PROPERTY LINE
	EXISTING WATER
	EXISTING SEWER
	EXISTING STORM WATER
	EXISTING OVERHEAD ELECTRIC
	EXISTING UNDERGROUND ELECTRIC
	EXISTING GAS
	ABANDONED ELECTRIC
	PROPOSED 36" WATER
	EXISTING CONTOUR
	AERIAL COX COMMUNICATIONS
	UNDERGROUND COX COMMUNICATIONS
	WETLAND DELINEATION
	WETLANDS AREA No.
	HYDRANT

- REFERENCES:**
1. AERIAL MAP, PARCEL MAP, AND GROUND CONTOUR DATA PROVIDED BY JAMES CITY COUNTY, SEPTEMBER 2017.
  2. EXISTING WATER AND SEWER LOCATIONS BASED ON GIS MAP PROVIDED BY JAMES CITY SERVICE AUTHORITY.
  3. EXISTING STORMWATER LINES BASED ON SHAPEFILES PROVIDED BY JAMES CITY COUNTY, OCTOBER 2017; FILE DID NOT INCLUDE CULVERT ROAD CROSSINGS. APPROXIMATE LOCATION OF CULVERT ROAD CROSSINGS WERE ESTIMATED BASED ON ROAD SIGNAGE AND FIELD OBSERVATION.
  4. APPROXIMATE LOCATION OF EXISTING ELECTRIC BASED ON PDF FILE PROVIDED BY DOMINION POWER, SEPTEMBER 2017.
  5. APPROXIMATE LOCATION OF EXISTING GAS BASED ON PDF FILE PROVIDED BY VIRGINIA NATURAL GAS, SEPTEMBER 2017.
  6. APPROXIMATE LOCATION OF COX COMMUNICATION LINE BASED ON PDF FILES PROVIDED BY COX, OCTOBER 2017.
  7. WETLAND LOCATION BASED ON FIELD DELINEATION CONDUCTED BY CDM SMITH, OCTOBER 2017.

WETLAND AREA NO.	TEMPORARY WETLAND DISTURBANCE (SF)
13	4,048.11 SF
14	4,448.64 SF
15	387.95 SF

NOTE: FOLLOWING PIPE INSTALLATION, WETLAND AREAS WILL BE RESTORED TO PRE-CONSTRUCTION CONTOURS AND SEEDED WITH A NATIVE HERBACEOUS WETLAND SEED MIX.

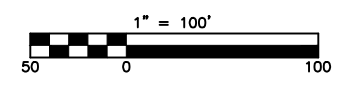
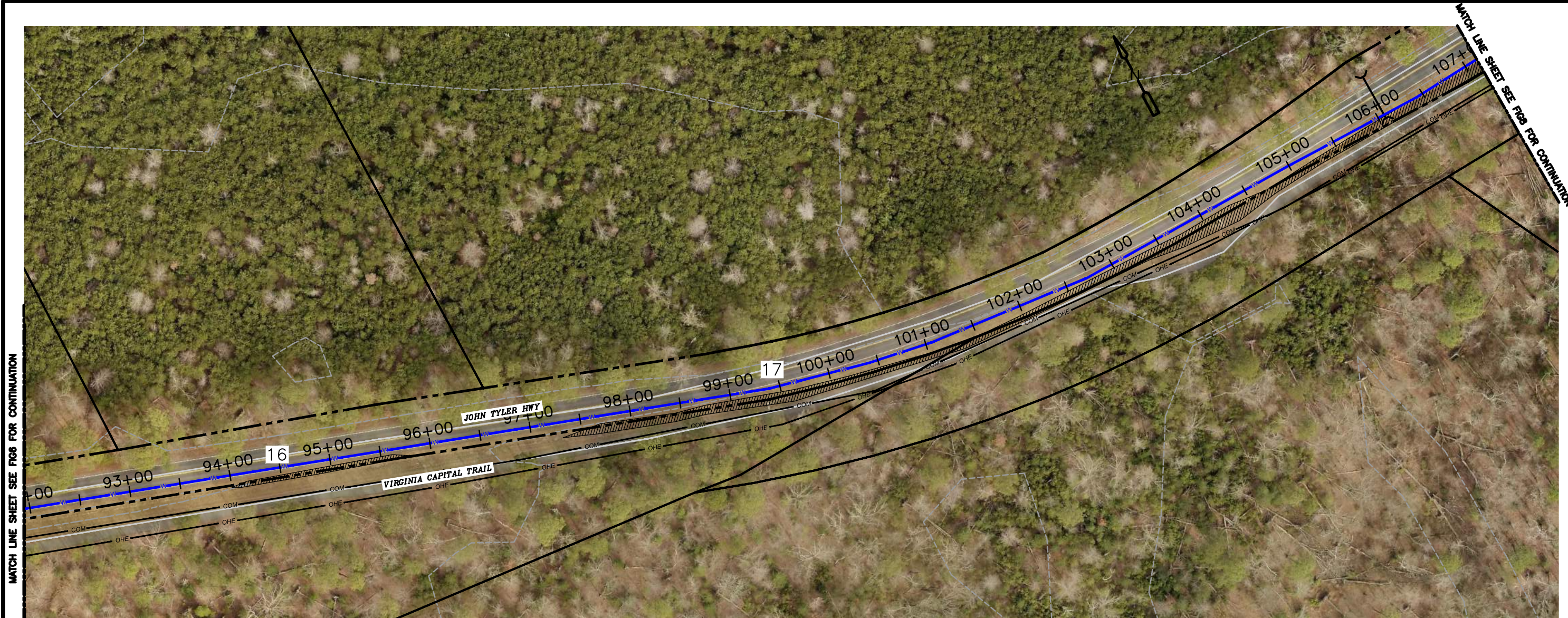


Figure No. FW-6  
CHICKAHOMINY RIVERFRONT PARK WTF FINISHED WATER MAIN  
NOVEMBER 2017



© 2015 CDM SMITH ALL RIGHTS RESERVED. REUSE OF DOCUMENTS: THESE DOCUMENTS AND DESIGNS PROVIDED BY PROFESSIONAL SERVICE, INCORPORATED HEREIN, ARE THE PROPERTY OF CDM SMITH AND ARE NOT TO BE USED, IN WHOLE OR PART, FOR ANY OTHER PROJECT WITHOUT THE WRITTEN AUTHORIZATION OF CDM SMITH.



MATCH LINE SHEET SEE FIGS FOR CONTINUATION

MATCH LINE SHEET SEE FIGS FOR CONTINUATION

**LEGEND:**

	R.O.W.
	PROPERTY LINE
	EXISTING WATER
	EXISTING SEWER
	EXISTING STORM WATER
	EXISTING OVERHEAD ELECTRIC
	EXISTING UNDERGROUND ELECTRIC
	EXISTING GAS
	ABANDONED ELECTRIC
	PROPOSED 36" WATER
	EXISTING CONTOUR
	AERIAL COX COMMUNICATIONS
	UNDERGROUND COX COMMUNICATIONS
	WETLAND DELINEATION
	WETLANDS AREA No.
	HYDRANT

- REFERENCES:**
1. AERIAL MAP, PARCEL MAP, AND GROUND CONTOUR DATA PROVIDED BY JAMES CITY COUNTY, SEPTEMBER 2017.
  2. EXISTING WATER AND SEWER LOCATIONS BASED ON GIS MAP PROVIDED BY JAMES CITY SERVICE AUTHORITY.
  3. EXISTING STORMWATER LINES BASED ON SHAPEFILES PROVIDED BY JAMES CITY COUNTY, OCTOBER 2017; FILE DID NOT INCLUDE CULVERT ROAD CROSSINGS. APPROXIMATE LOCATION OF CULVERT ROAD CROSSINGS WERE ESTIMATED BASED ON ROAD SIGNAGE AND FIELD OBSERVATION.
  4. APPROXIMATE LOCATION OF EXISTING ELECTRIC BASED ON PDF FILE PROVIDED BY DOMINION POWER, SEPTEMBER 2017.
  5. APPROXIMATE LOCATION OF EXISTING GAS BASED ON PDF FILE PROVIDED BY VIRGINIA NATURAL GAS, SEPTEMBER 2017.
  6. APPROXIMATE LOCATION OF COX COMMUNICATION LINE BASED ON PDF FILES PROVIDED BY COX, OCTOBER 2017.
  7. WETLAND LOCATION BASED ON FIELD DELINEATION CONDUCTED BY CDM SMITH, OCTOBER 2017.

WETLAND AREA NO.	TEMPORARY WETLAND DISTURBANCE (SF)
16	884.67 SF
17	9,781.31 SF

NOTE: FOLLOWING PIPE INSTALLATION, WETLAND AREAS WILL BE RESTORED TO PRE-CONSTRUCTION CONTOURS AND SEEDED WITH A NATIVE HERBACEOUS WETLAND SEED MIX.

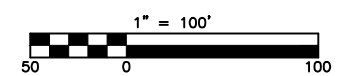
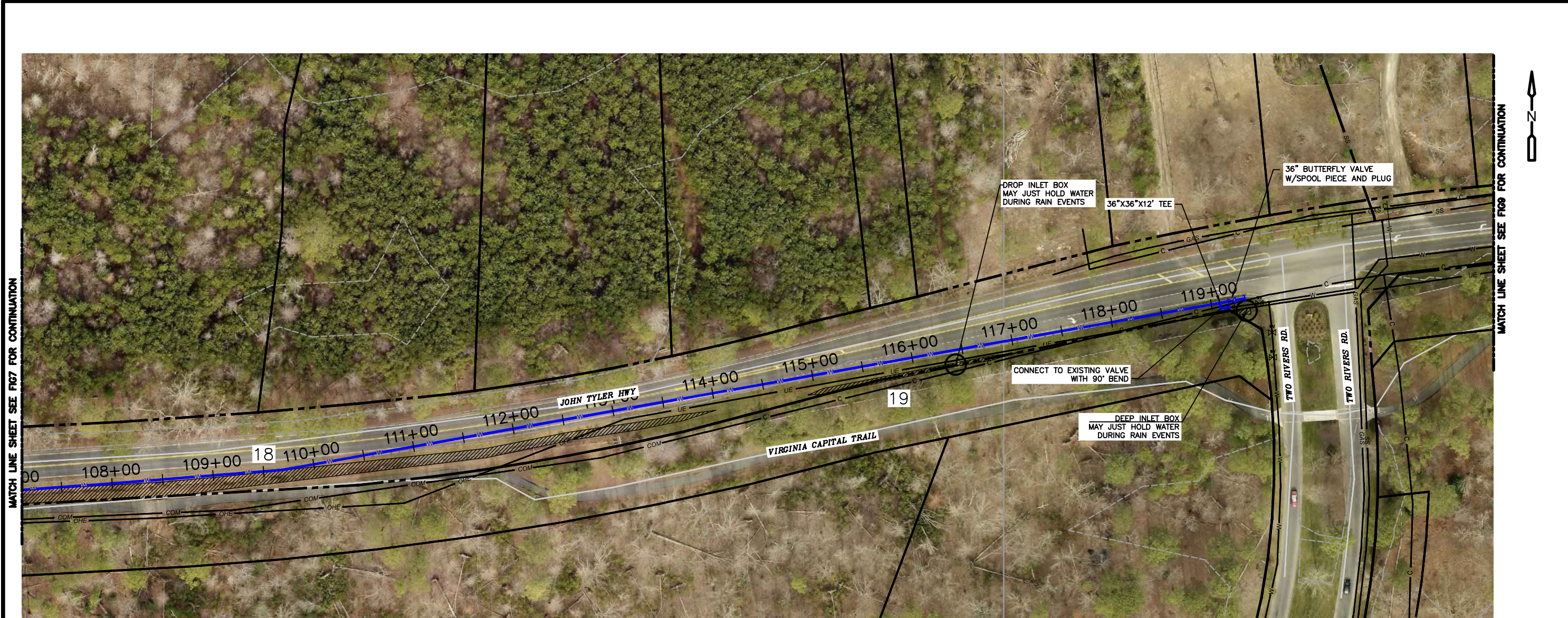


Figure No. FW-7  
CHICKAHOMINY RIVERFRONT PARK WTF FINISHED WATER MAIN  
NOVEMBER 2017

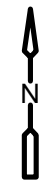


© 2015 CDM SMITH ALL RIGHTS RESERVED. REUSE OF DOCUMENTS: THESE DOCUMENTS AND DESIGNS PROVIDED BY PROFESSIONAL SERVICE, INCORPORATED HEREIN, ARE THE PROPERTY OF CDM SMITH AND ARE NOT TO BE USED, IN WHOLE OR PART, FOR ANY OTHER PROJECT WITHOUT THE WRITTEN AUTHORIZATION OF CDM SMITH.



MATCH LINE SHEET SEE FIG 7 FOR CONTINUATION

MATCH LINE SHEET SEE FIG 9 FOR CONTINUATION



**LEGEND:**

	R.O.W.
	PROPERTY LINE
	EXISTING WATER
	EXISTING SEWER
	EXISTING STORM WATER
	EXISTING OVERHEAD ELECTRIC
	EXISTING UNDERGROUND ELECTRIC
	EXISTING GAS
	ABANDONED ELECTRIC
	PROPOSED 36" WATER
	EXISTING CONTOUR
	AERIAL COX COMMUNICATIONS
	UNDERGROUND COX COMMUNICATIONS
	WETLAND DELINEATION
	WETLANDS AREA No.
	HYDRANT

- REFERENCES:**
1. AERIAL MAP, PARCEL MAP, AND GROUND CONTOUR DATA PROVIDED BY JAMES CITY COUNTY, SEPTEMBER 2017.
  2. EXISTING WATER AND SEWER LOCATIONS BASED ON GIS MAP PROVIDED BY JAMES CITY SERVICE AUTHORITY.
  3. EXISTING STORMWATER LINES BASED ON SHAPEFILES PROVIDED BY JAMES CITY COUNTY, OCTOBER 2017; FILE DID NOT INCLUDE CULVERT ROAD CROSSINGS. APPROXIMATE LOCATION OF CULVERT ROAD CROSSINGS WERE ESTIMATED BASED ON ROAD SIGNAGE AND FIELD OBSERVATION.
  4. APPROXIMATE LOCATION OF EXISTING ELECTRIC BASED ON PDF FILE PROVIDED BY DOMINION POWER, SEPTEMBER 2017.
  5. APPROXIMATE LOCATION OF EXISTING GAS BASED ON PDF FILE PROVIDED BY VIRGINIA NATURAL GAS, SEPTEMBER 2017.
  6. APPROXIMATE LOCATION OF COX COMMUNICATION LINE BASED ON PDF FILES PROVIDED BY COX, OCTOBER 2017.
  7. WETLAND LOCATION BASED ON FIELD DELINEATION CONDUCTED BY CDM SMITH, OCTOBER 2017.

WETLAND AREA NO.	TEMPORARY WETLAND DISTURBANCE (SF)
18	6,816.21 SF
19	846.20 SF

NOTE: FOLLOWING PIPE INSTALLATION, WETLAND AREAS WILL BE RESTORED TO PRE-CONSTRUCTION CONTOURS AND SEEDED WITH A NATIVE HERBACEOUS WETLAND SEED MIX.

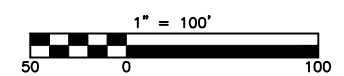


Figure No. FW-8  
CHICKAHOMINY RIVERFRONT PARK WTF FINISHED WATER MAIN  
NOVEMBER 2017