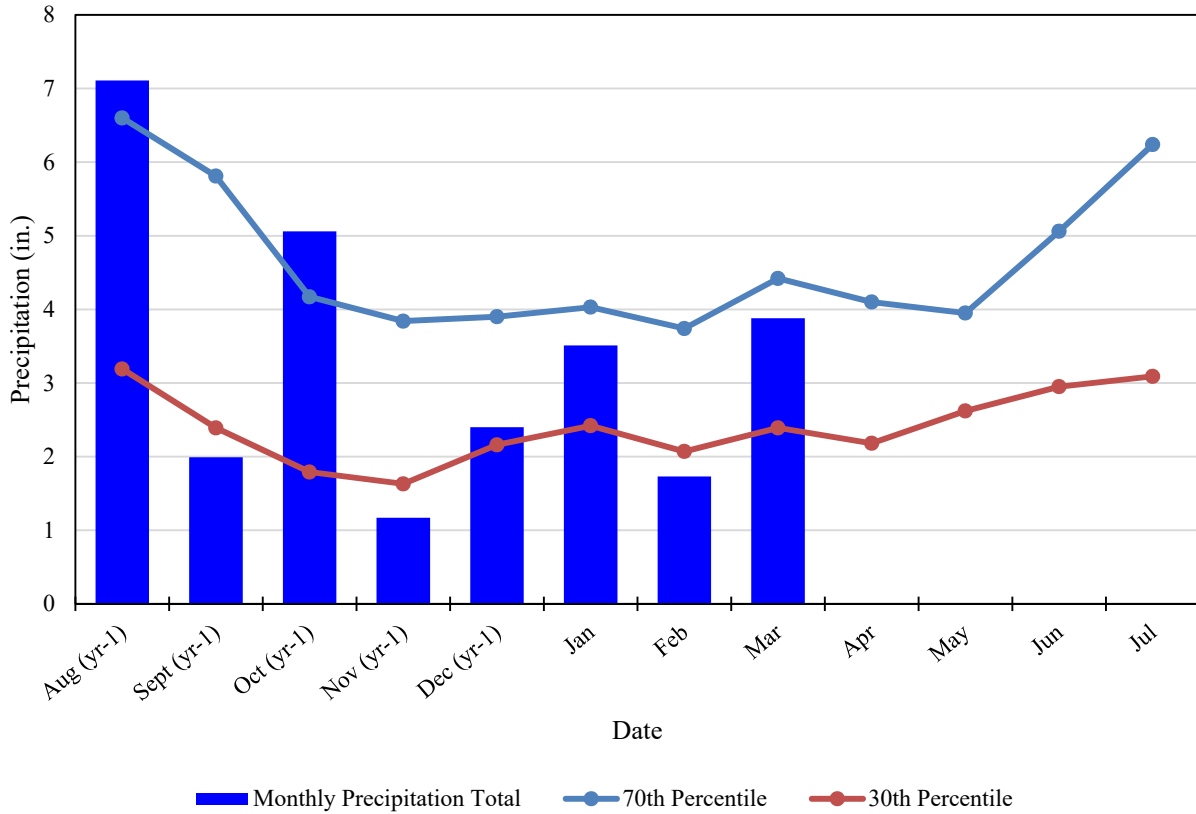
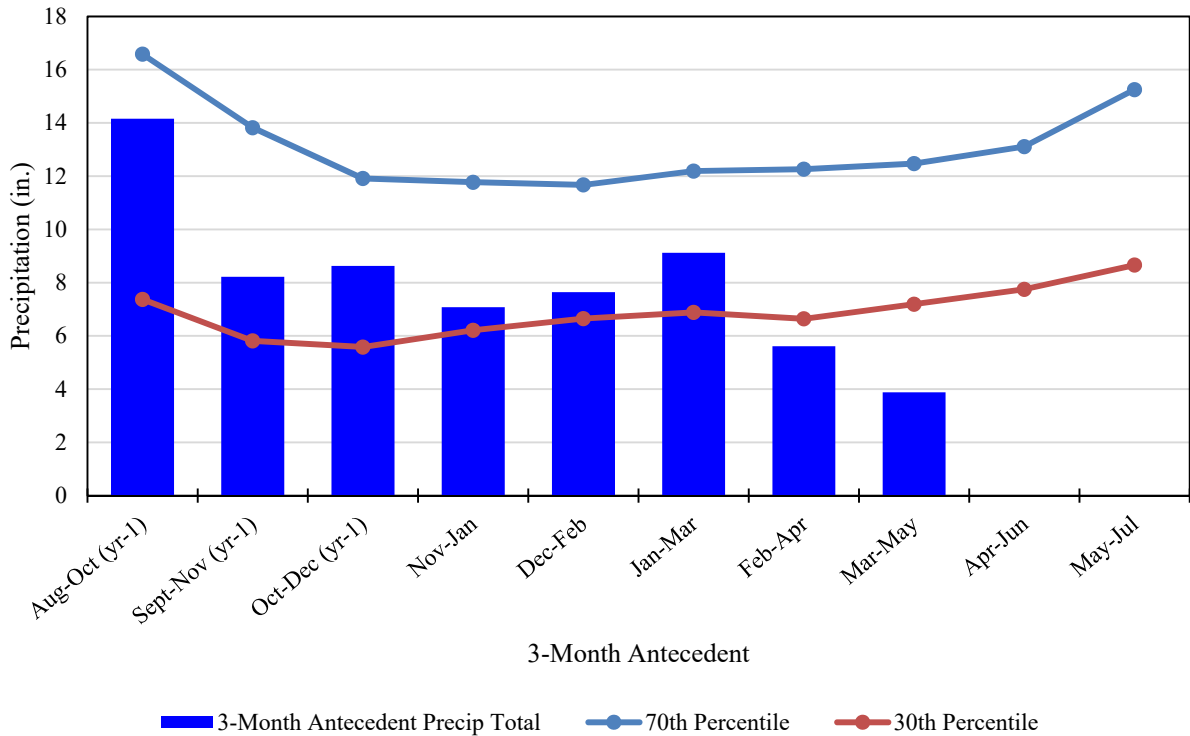


### 2017-2018 Norfolk Precipitation (as of 01 April 2018)



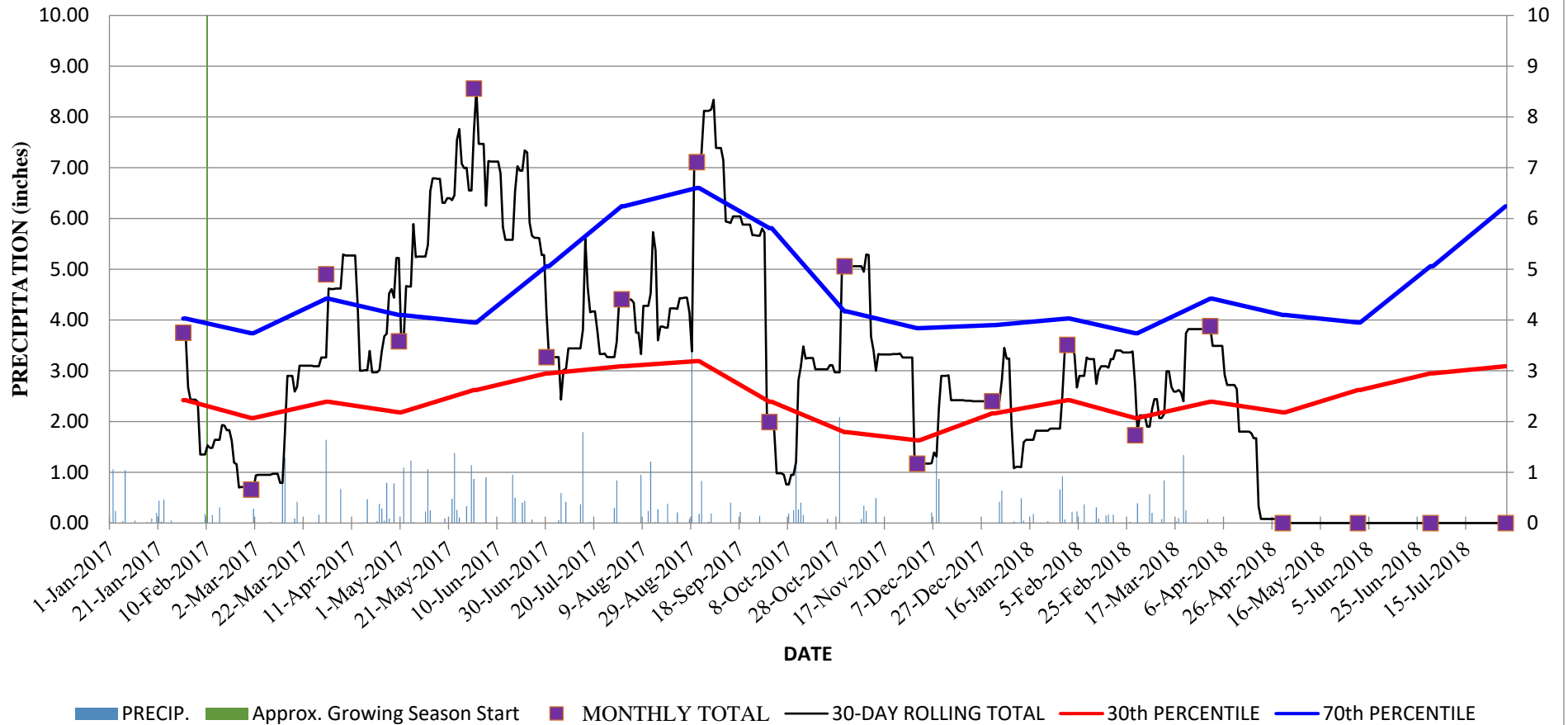
### 2017-2018 Norfolk Precipitation 3-month antecedent (as of 01 April 2018)



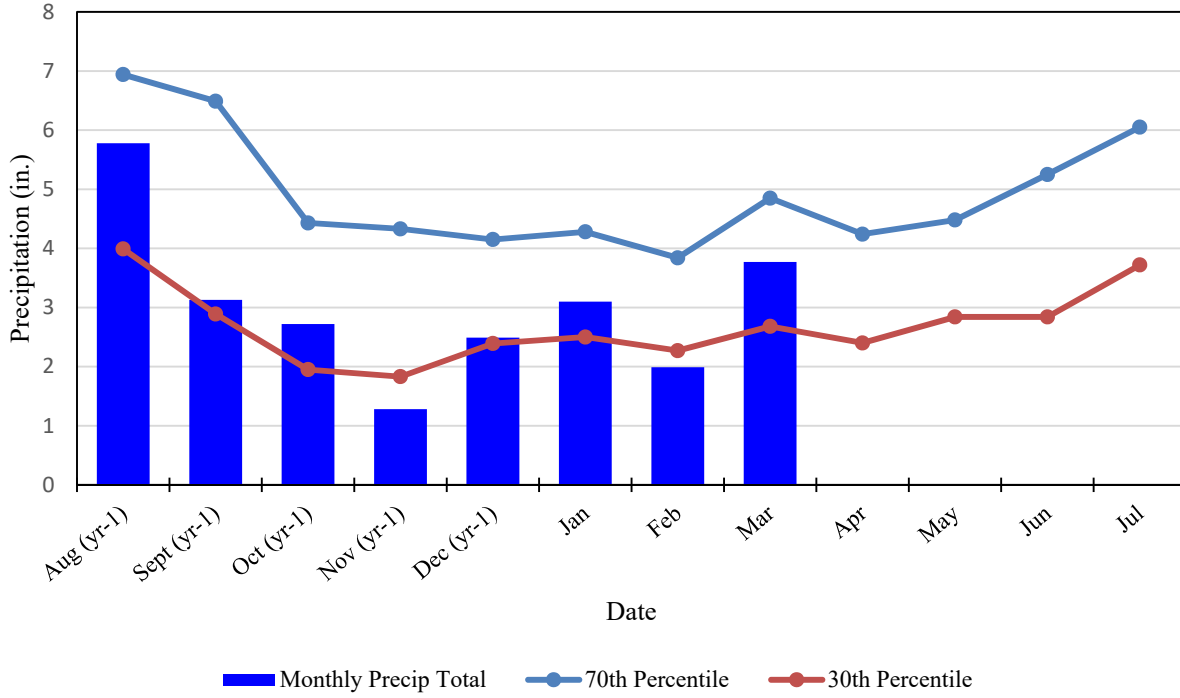
# Norfolk Precipitation Trends

## Jan 2017 to current (as of 01 April 2018)

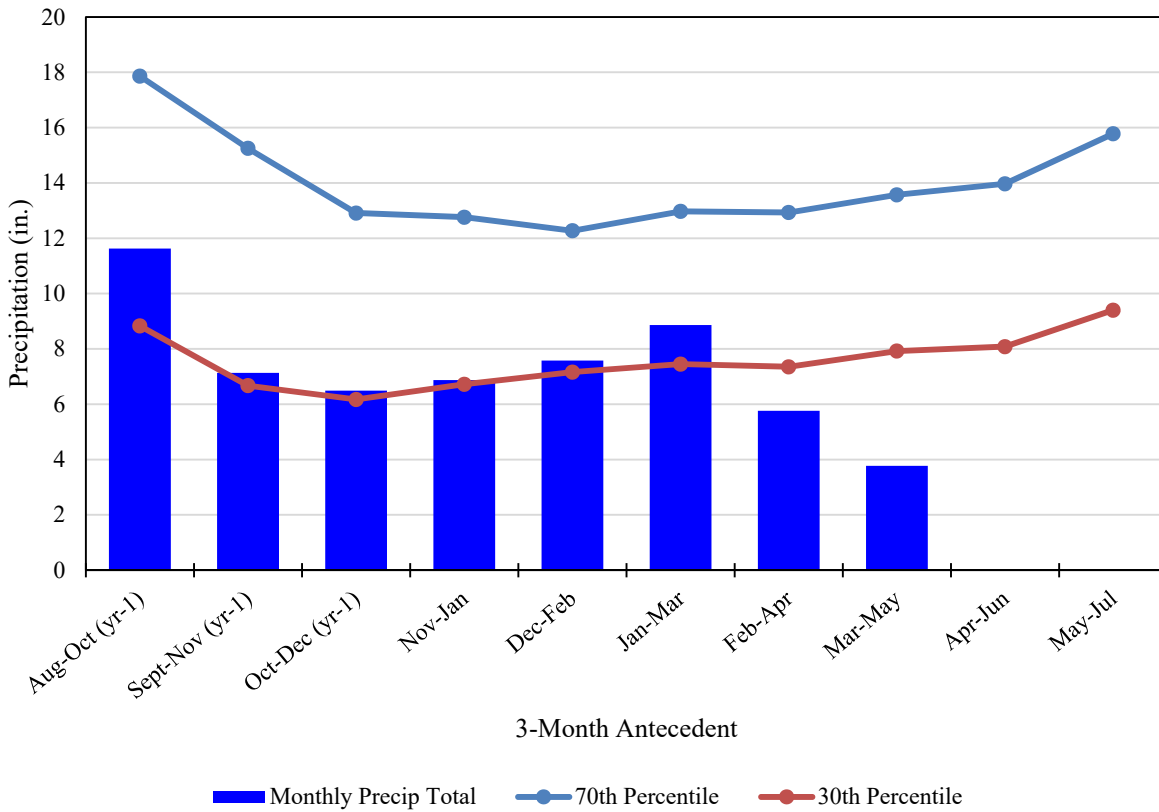
### 30-day Rolling Totals, Monthly Totals, and 30th & 70th Percentiles



2017-2018 Lake Kilby (Suffolk) Precipitation  
(as of 02 April 2018)

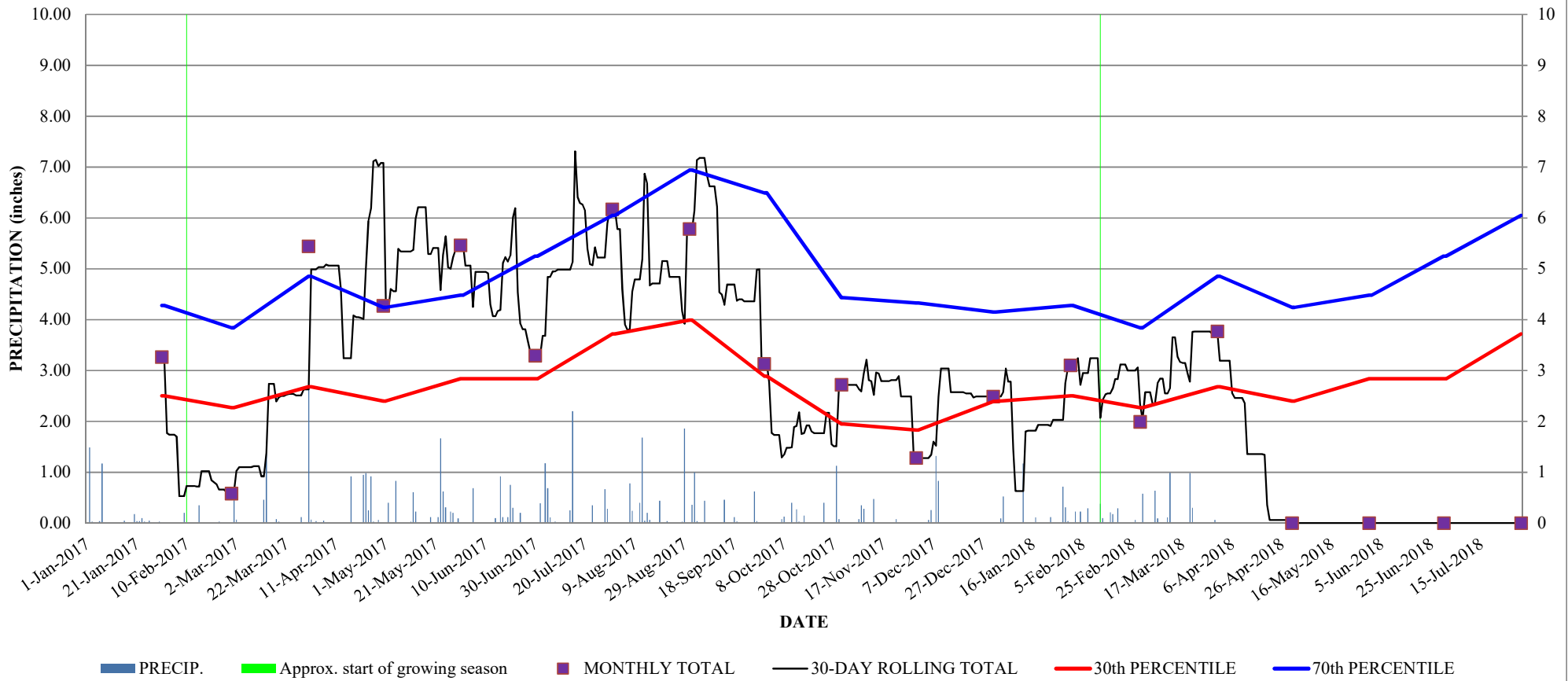


2017-2018 Lake Kilby (Suffolk) Precipitation  
3-month antecedent (as of 02 April 2018)

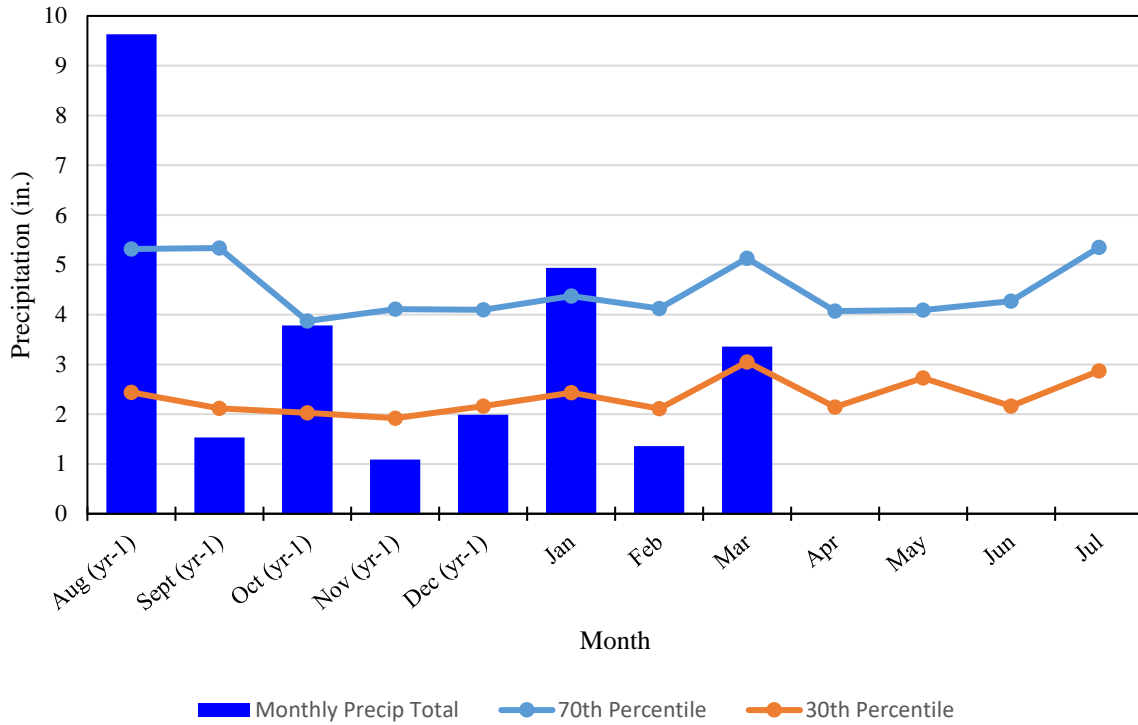


# Lake Kilby Precipitation Trends

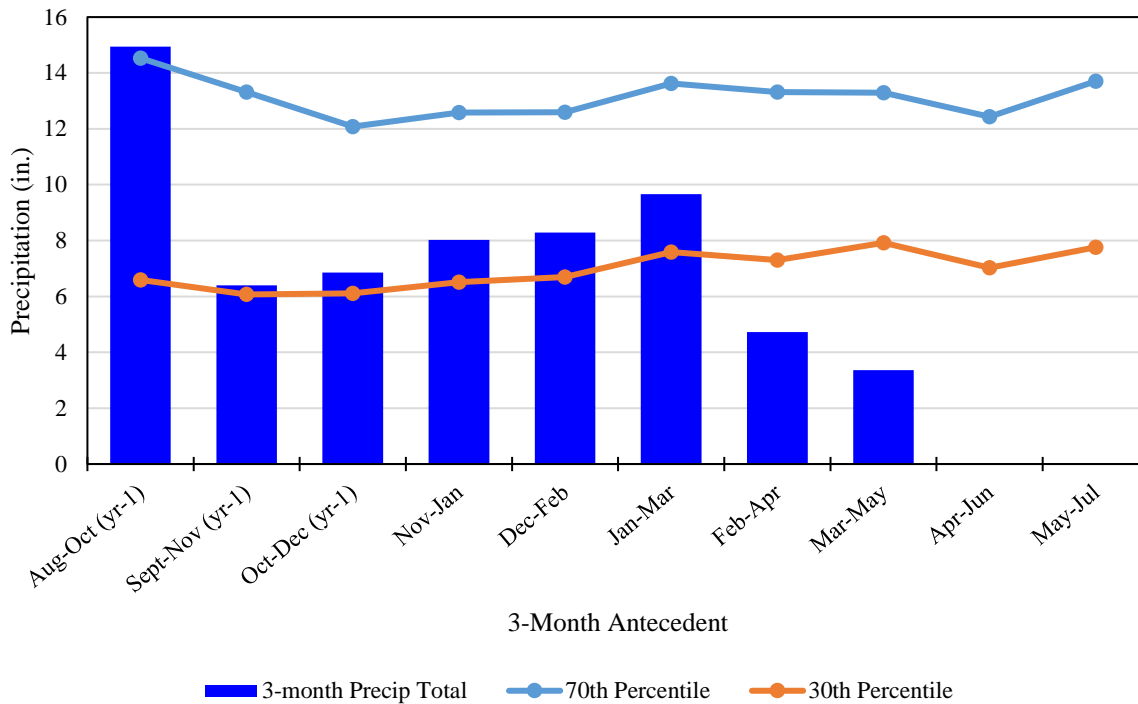
01 Jan 2017 thru **02 April 2018**  
 30-day Rolling Totals, Monthly Totals, and 30th & 70th Percentiles



### 2017-2018 Langley (Hampton) Precipitation (as of 01 April 2018)



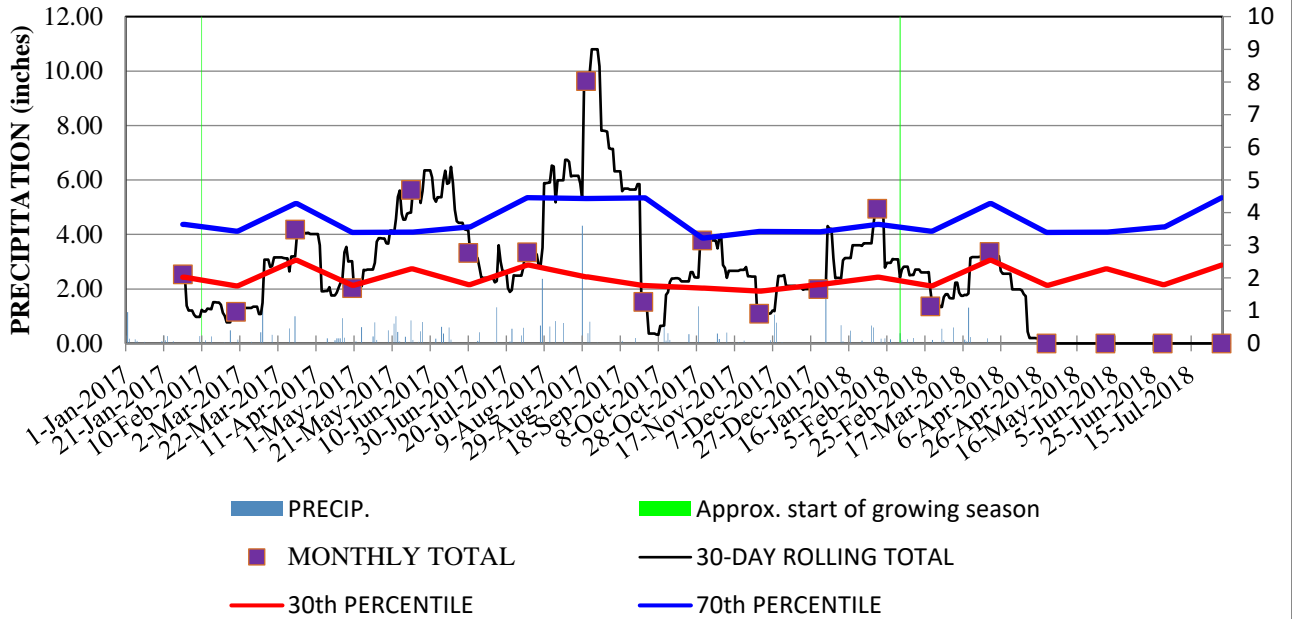
### 2017-2018 Langley (Hampton) Precipitation 3-month antecedent (as of 01 April 2018)



# Langley Precipitation Trends

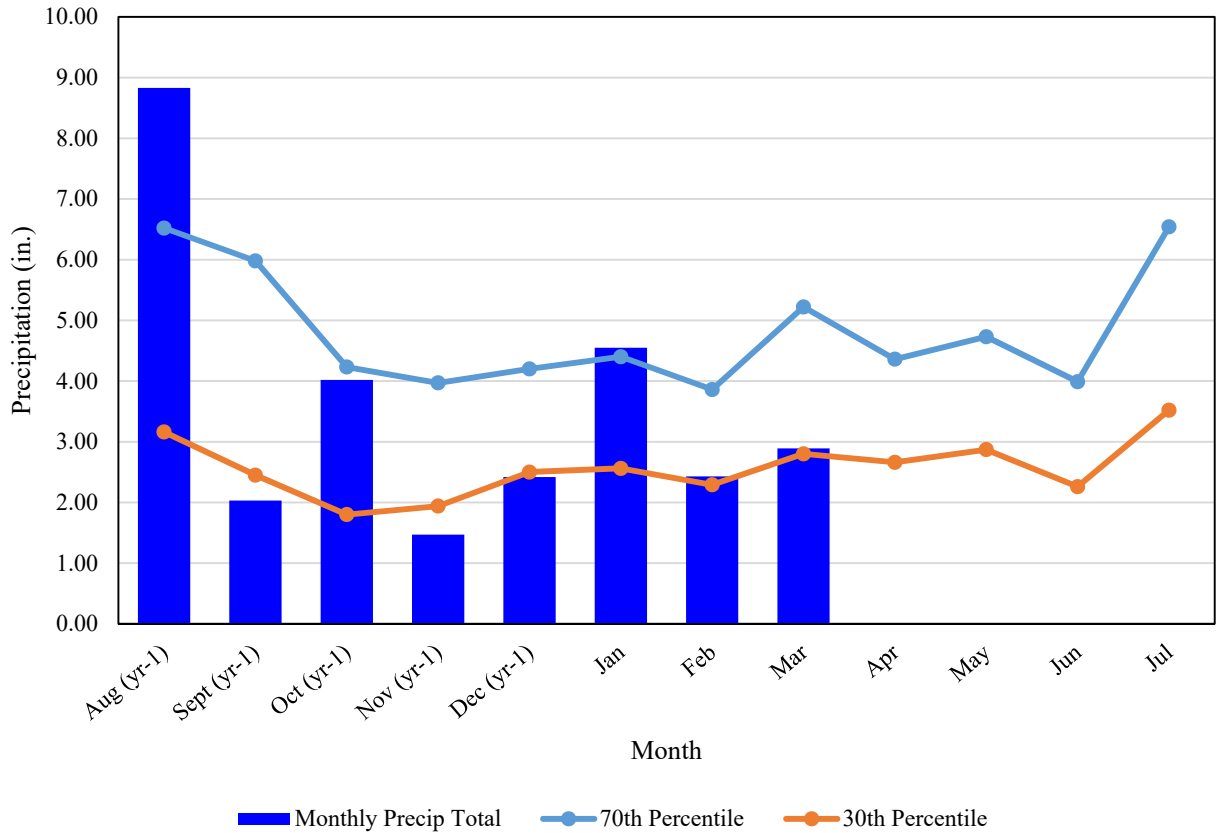
## 01 Jan 2017 thru current (as of 01 March 2018)

### 30-day Rolling Totals, Monthly Totals, and 30th & 70th Percentiles



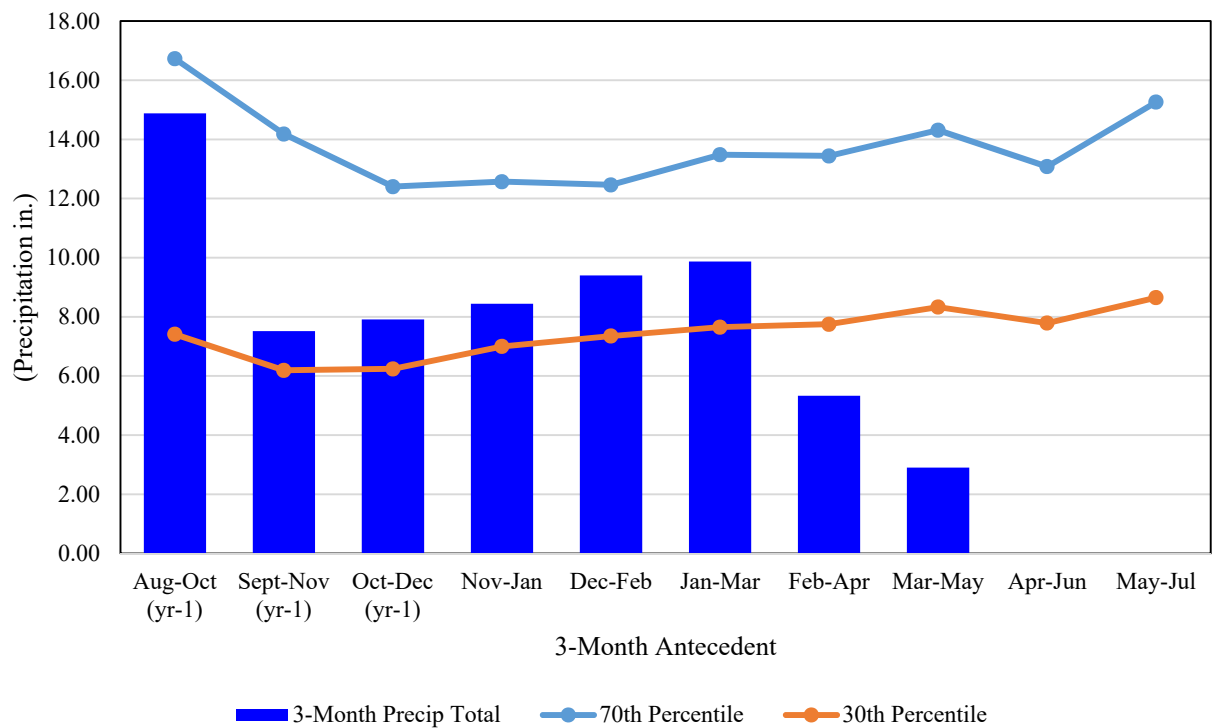
## 2017-2018 Williamsburg 2N Precipitation

(as of 04 April 2018)



## 2017-2018 Williamsbrug 2N Precipitation

3-month antecedent (as of 04 April 2018)



# Williamsburg 2N - Precipitation Trends

Jan 2017 to present (as of 04 April 2018)

30-day Rolling Totals, Monthly Totals, and 30th & 70th Percentiles

