

USACE Norfolk
Received 11/9/2016-JS1

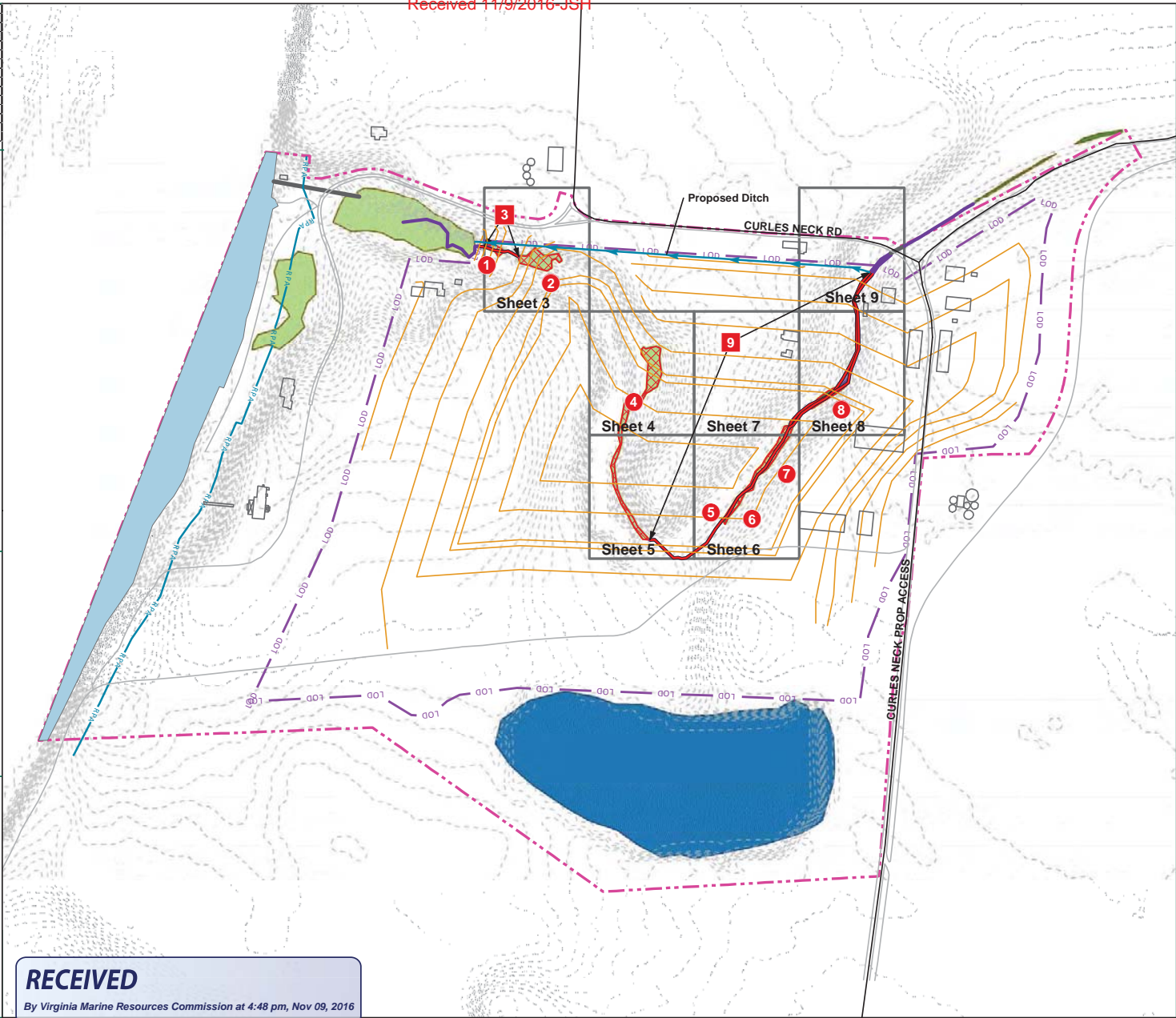
Impact ID	Wetland (sq. ft)				Stream (ft)	
	Temporary	Permanent	Temporary	Permanent	Temporary	Permanent
1		1,069				
2		5,536				
3						138
4		13,266				
5		588				
6		764				
7		8,079				
8		1,734				
9						1,352
Total	0 sq ft 0.00 ac	29,027 sq ft 0.67 ac	0 sq ft 0.00 ac	0 sq ft 0.00 ac	0 ft	1,490 ft

Legend

- Project Study Limits - 130.2 Acres
- Limits of Disturbance - 70.5 Acres
- Sheet Index
- Stream Impact
- Wetland Impact
- Proposed Ditch
- Proposed Grading
- 1' Topographic Contours
- Permanent Stream Impact
- Culvert
- Intermittent Stream (R4)
- Perennial Stream (R3) - Top of Bank
- Permanent Wetland Impact
- Intermittent Stream - Top of Bank
- Palustrine Emergent (PEM) Wetland
- Palustrine Forested (PFO) Wetland
- Palustrine Open Water (POW)
- Palustrine Scrub-Shrub (PSS) Wetland

NOTES:

1. WATERS OF THE U.S. WITHIN THE PROJECT STUDY LIMITS HAVE BEEN GPS LOCATED BY TIMMONS GROUP.
2. WATERS OF THE U.S. HAVE BEEN CONFIRMED BY THE U.S. ARMY CORPS OF ENGINEERS.
3. PROJECT STUDY LIMITS ARE APPROXIMATE.
4. TOPOGRAPHY BASED ON USGS LIDAR DATA.
5. COWARDIN STREAM CLASSIFICATIONS ARE BASED SOLELY ON FIELD OBSERVATIONS. NO FORMAL STREAM ASSESSMENT METHODOLOGY WAS COMPLETED TO DETERMINE THESE COWARDIN CLASSIFICATIONS.



RECEIVED
By Virginia Marine Resources Commission at 4:48 pm, Nov 09, 2016

Path: Y:\041026\041026-Curles Neck Farm\041026 Wetland Impact\041026 WTR.mxd

TIMMONS GROUP

CURLES NECK FARM
HENRICO COUNTY, VIRGINIA

FIGURE 3: PRELIMINARY JURISDICTIONAL WATERS OF THE U.S. IMPACTS MAP

THIS DRAWING PREPARED AT THE
1001 Builders Parkway, Suite 300 | Richmond, VA 23225
TEL 804.200.6800 FAX 804.606.7648 www.timmons.com

YOUR VISION ACHIEVED THROUGH OURS
Site Development | Residential | Infrastructure | Technology | Environmental

DATE: 07/26/2016
DRAWN BY: B. NORRIS
DESIGNED BY: B. NORRIS
CHECKED BY: J. BROOKS
SCALE: 1" = 350'

JOB NUMBER: 38268
SHEET NO.: 1 OF 9