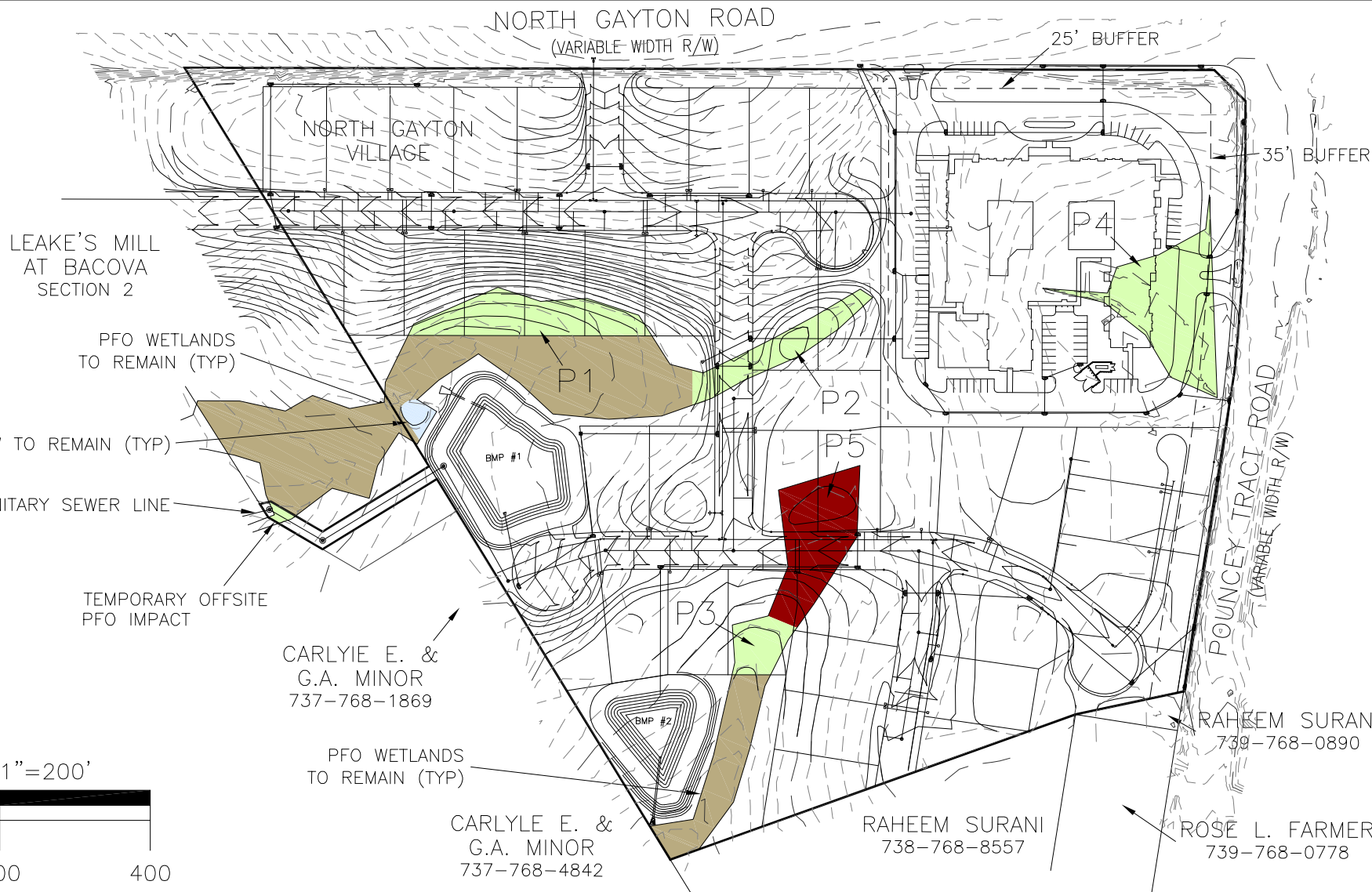
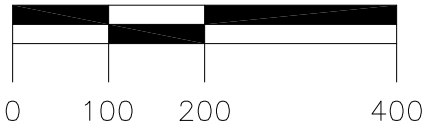


HENRICO COUNTY
 MAD 83
 SCALE FACTOR
 0.99995165



SCALE: 1"=200'



SITE DATA

TOTAL PROJECT AREA = 23.38 ± AC
 TOTAL POW = 0.03 ± AC
 TOTAL PFO = 2.11 ± AC
 TOTAL PEM = 0.36 ± AC
 TOTAL PFO & PEM = 2.47 ± AC

SITE PROPOSED IMPACTS

TOTAL PERMANENT PFO IMPACTS = 1.09 ± AC
 TOTAL PERMANENT PEM IMPACTS = 0.36 ± AC
 TOTAL PERMANENT PFO & PEM IMPACTS = 1.45 ± AC
 TOTAL TEMPORARY PFO IMPACTS = 0.01 ± AC

PROPOSED PERMANENT IMPACTS

IMPACT ID	IMPACT TYPE	ACERAGE
P1	PFO IMPACT	0.31
P2	PFO IMPACT	0.20
P3	PFO IMPACT	0.11
P4	PFO IMPACT	0.47
P5	PEM IMPACT	0.36

PROPOSED TEMPORARY IMPACTS

IMPACT ID	IMPACT TYPE	ACERAGE
T1	PFO IMPACT	0.01

EXISTING CONTOURS

KEY

- PALUSTRINE FORESTED (PFO) WETLANDS TO REMAIN
- PALUSTRINE FORESTED (PFO) WETLANDS TO BE IMPACTED
- PALUSTRINE EMERGENT (PEM) WETLANDS TO BE IMPACTED
- PALUSTRINE OPEN WATER (POW) TO REMAIN

**NORTH GAYTON VILLAGE
 WETLAND IMPACT MAP**

THREE CHOPT DISTRICT HENRICO COUNTY, VIRGINIA

DATE: SEP. 6, 2017

SCALE: AS SHOWN

DRAWN BY: DCW

**YOUNGBLOOD, TYLER
 & ASSOCIATES P.C.**
 CONSULTING ENGINEERS, PLANNERS & SURVEYORS