

COASTAL
 Design & Construction, Inc.
 P.O. Box 650, Gloucester, Virginia 23061
 804-693-4158

vhb
 351 McLaws Circle, Suite 3
 Williamsburg, Virginia 23185
 (757) 220-0500 • Fax: (757) 903-2794

SOURCE: USGS QUADRANGLE CAPE CHARLES

0 1,000 2,000 Feet

ADJACENT PROPERTY OWNERS:
 1. BAYSHORE CONCRETE PRODUCTS CORPORATION
 2. TOWN OF CAPE CHARLES
 3. SOUTHPORT INVESTORS LLC

CAPE HARBOR HOLDINGS LLC. MARINE TERMINAL & BOAT YARD LOCATION MAP

APPLICATION BY:
 CAPE HARBOR HOLDINGS LLC.

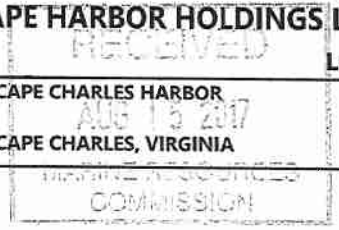
AT: CAPE CHARLES HARBOR
 IN: CAPE CHARLES, VIRGINIA

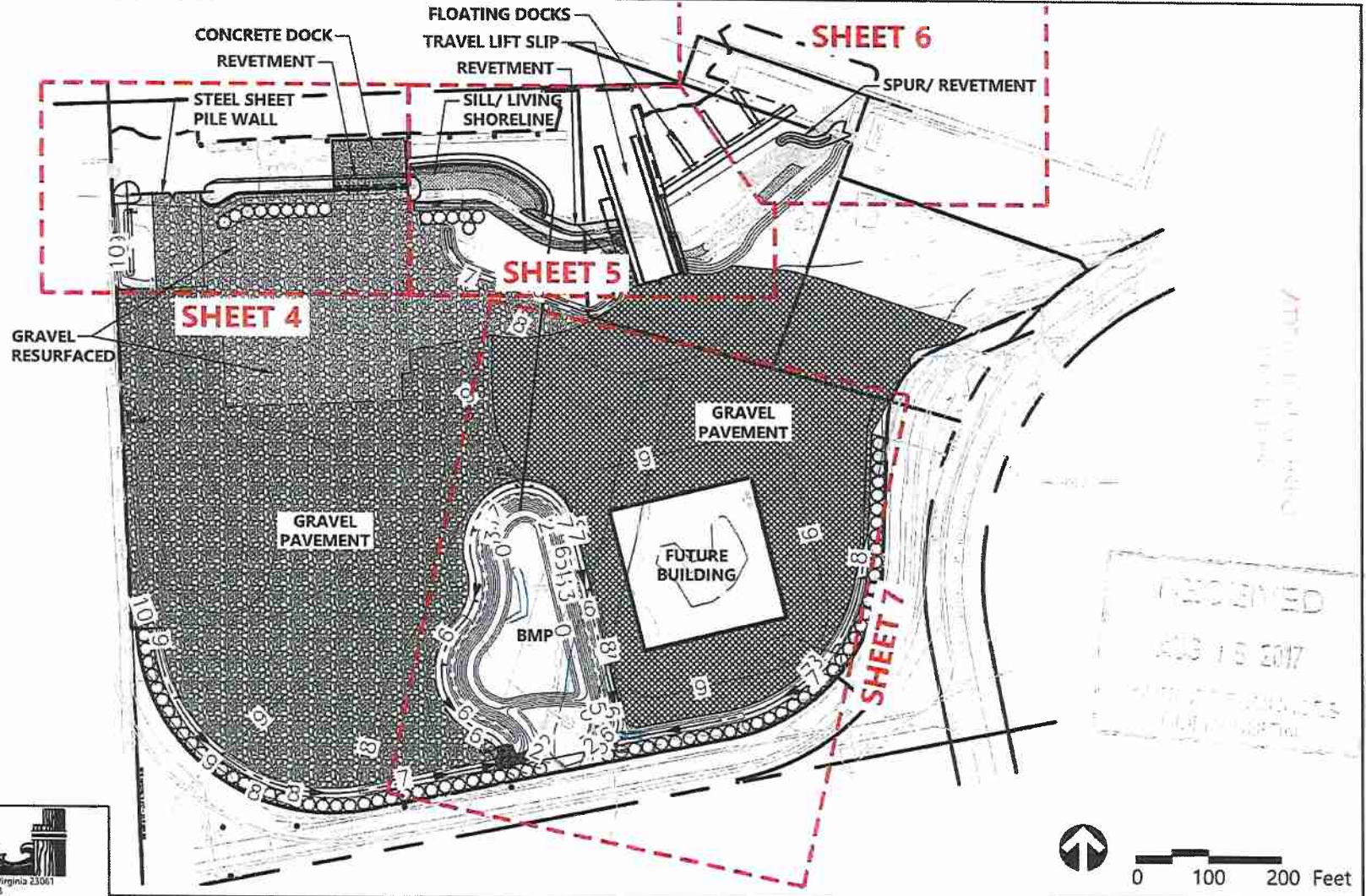
PURPOSE: MARINE TERMINAL & BOAT YARD

DATE: JULY 27, 2017

DATUM: NAVD 88

SHEET 1 OF 11





RECEIVED
 AUG 18 2017
 USACE DISTRICT OFFICE
 NORFOLK DISTRICT

COASTAL
 Design & Construction, Inc.
 P.O. Box 650, Gloucester, Virginia 23061
 804-693-4158

vhb
 351 McLaws Circle, Suite 3
 Williamsburg, Virginia 23185
 (757) 220-0500 • Fax: (757) 903-2794

ADJACENT PROPERTY OWNERS:
 1. BAYSHORE CONCRETE PRODUCTS CORPORATION
 2. TOWN OF CAPE CHARLES
 3. SOUTHPORT INVESTORS LLC
DATUM: NAVD 88

CAPE HARBOR HOLDINGS LLC. MARINE TERMINAL & BOAT YARD
OVERALL LAYOUT
AT: CAPE CHARLES HARBOR
IN: CAPE CHARLES, VIRGINIA
PURPOSE: MARINE TERMINAL & BOAT YARD

APPLICATION BY:
 CAPE HARBOR HOLDINGS LLC.
DATE: JULY 27, 2017
SHEET 3 OF 11