



Figure 1. Vicinity Map



Figure 2. Property boundary and proposed mitigation area

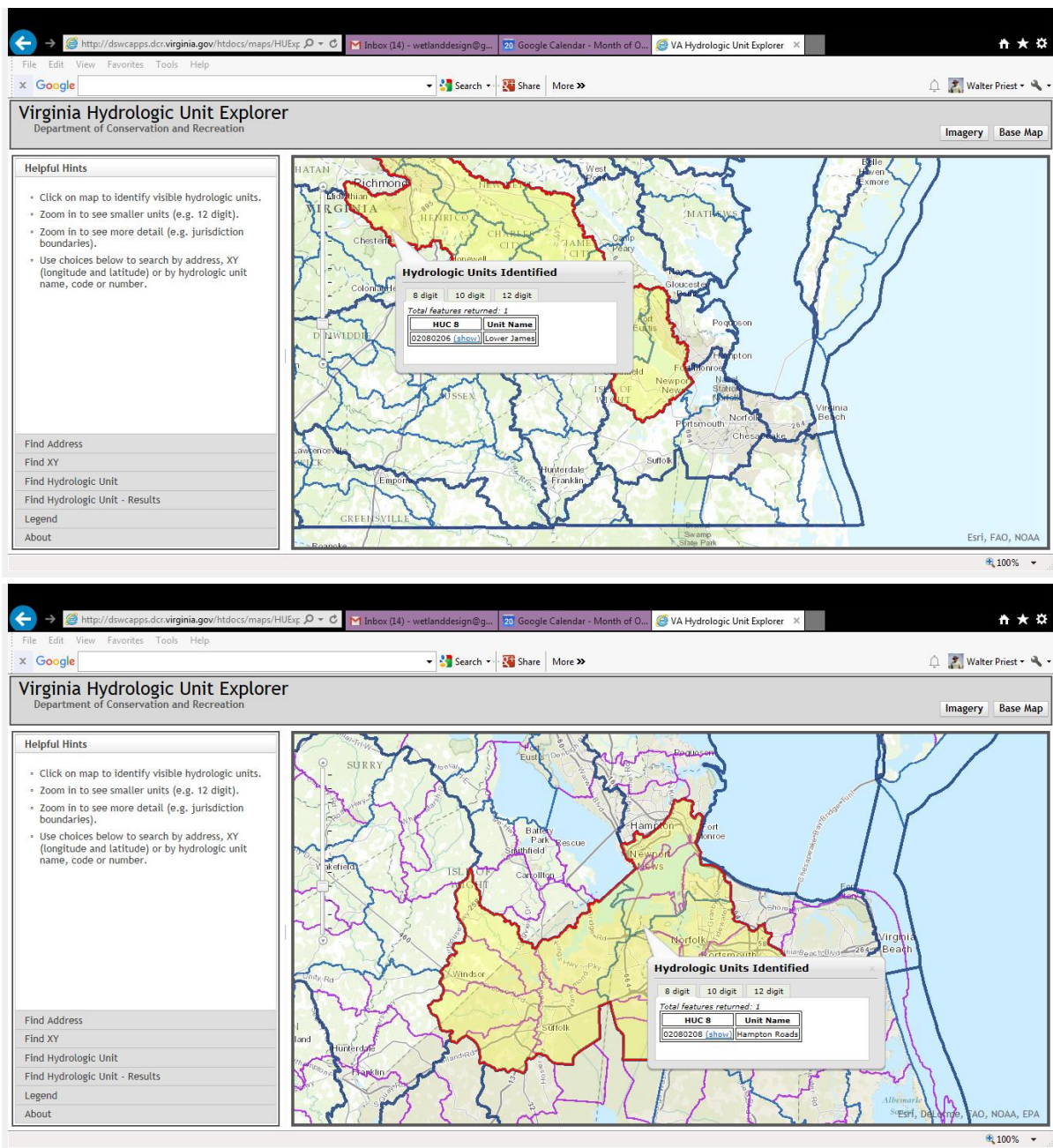


Figure 3. Proposed hydrologic units for New Mill Creek Tidal Wetland Mitigation Bank.



Figure 4. Aerial photograph of proposed mitigation site.

Sampson Creek Property Wetland Delineation Exhibit

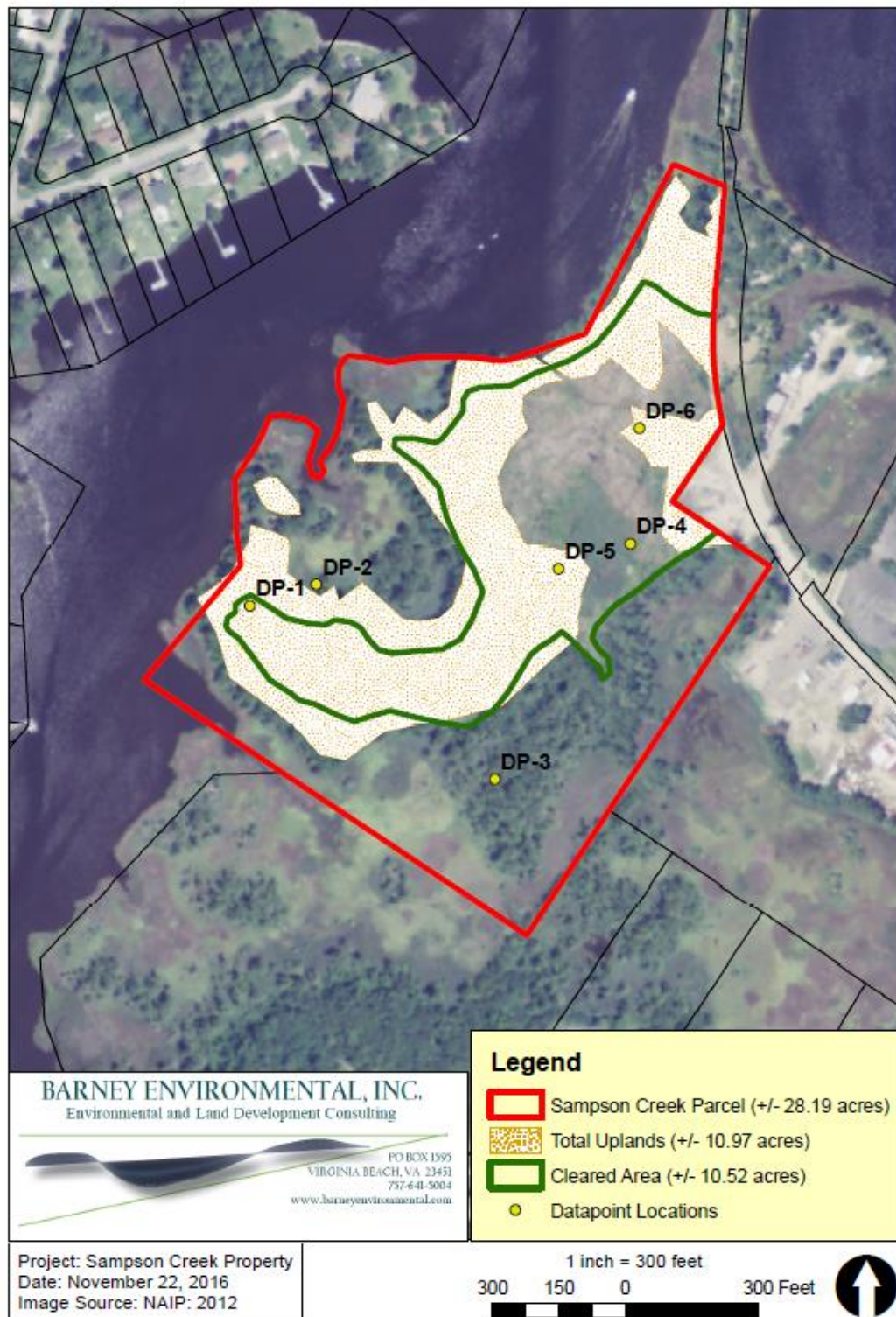


Figure 6. Wetland delineation map.

Sampson Creek Property NRCS Soil Survey Exhibit

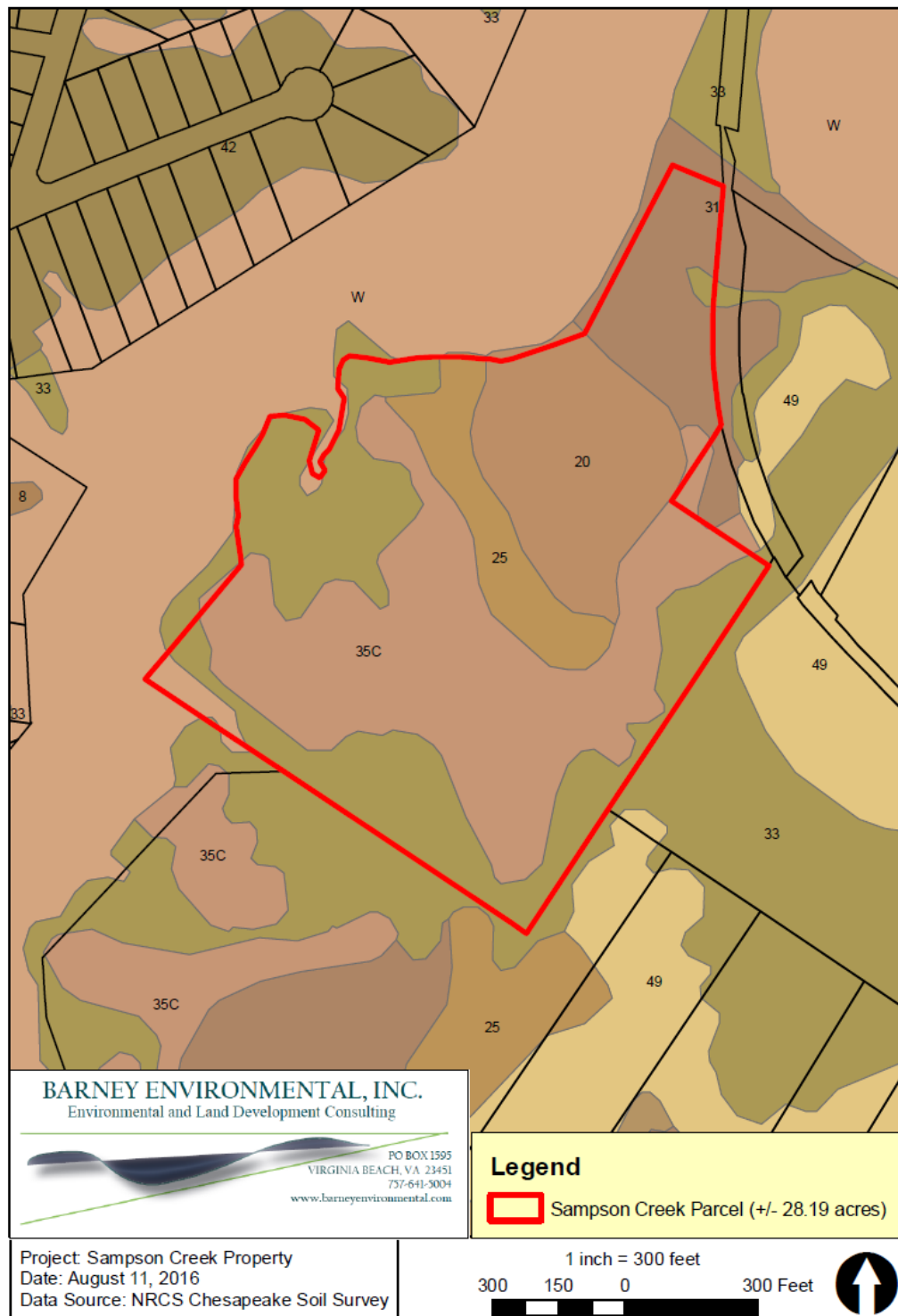


Figure 7. Soils map of mitigation site. 20=Dragston-Tomotley Complex, 25=Munden, 31=Pactolus, 33=Pocaty and 35C- psamments.

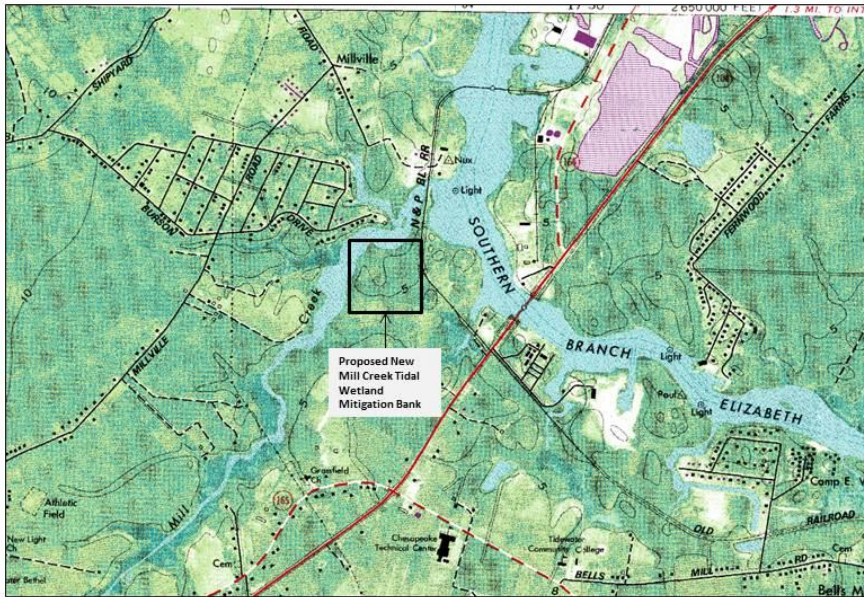


Figure 8. Topographic map of the site from the Deep Creek USGS quadrangle.



Figure 9. 1937 aerial photograph from the National Archives indicating farmed fields on the site.

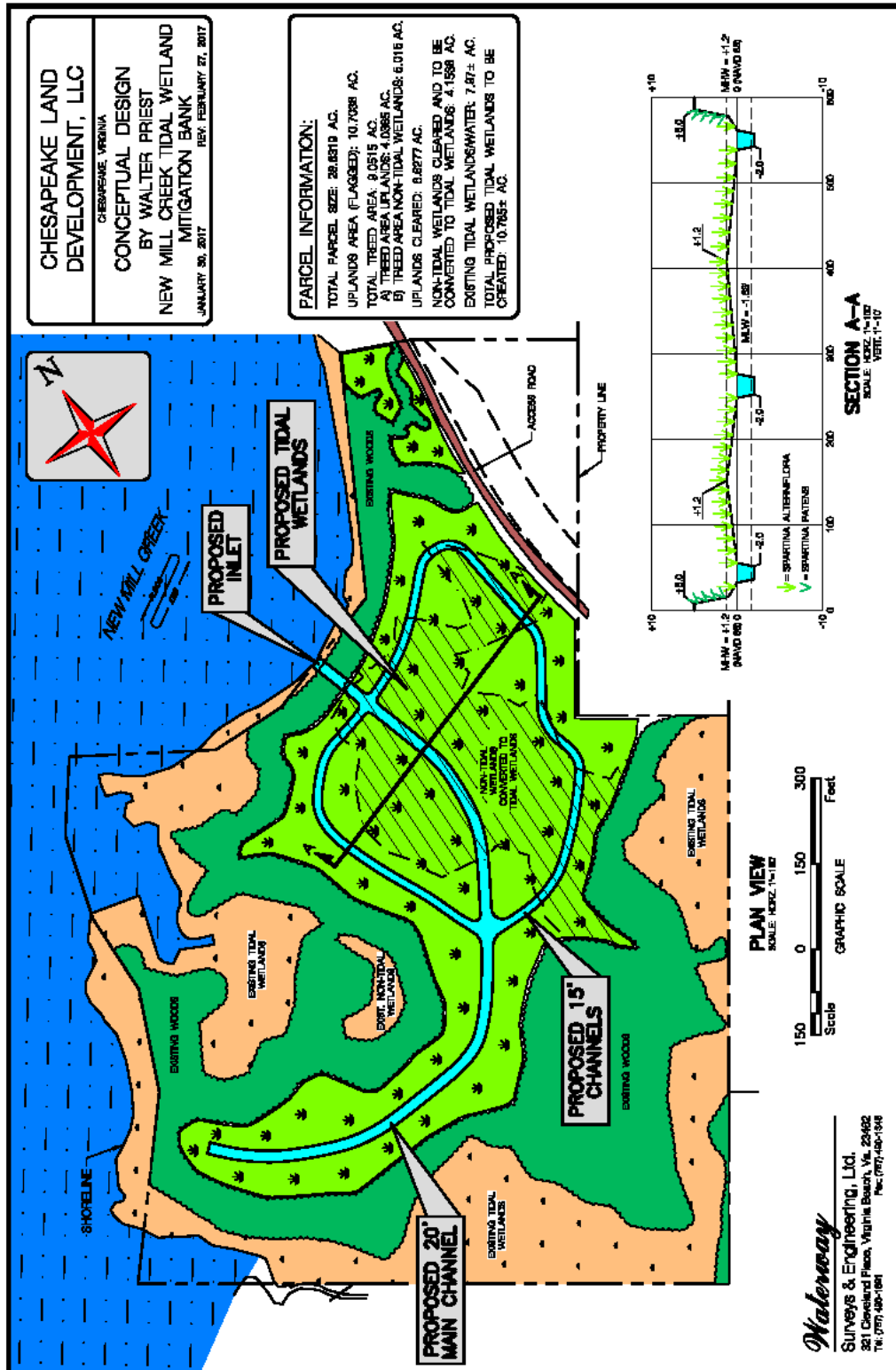


Figure 13. Conceptual Plan for the proposed New Mill Creek Tidal Wetland Mitigation Bank.