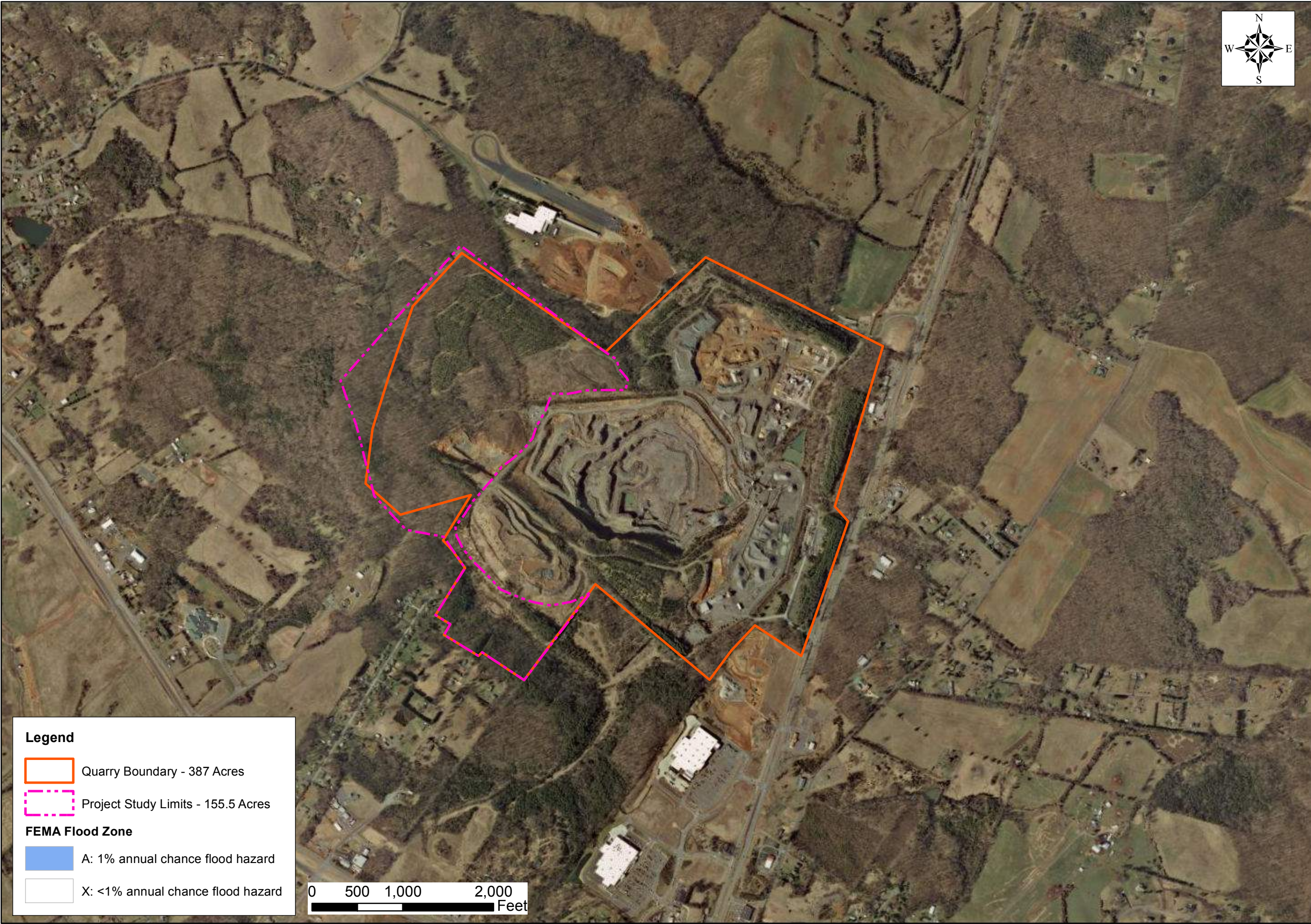


Path: Y:\804\38492-Luck\_Stone\_Greene\GIS\Common Shared Exhibits\38492-FEMA.mxd



**Legend**

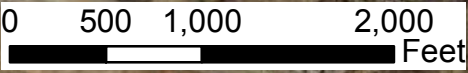
Quarry Boundary - 387 Acres

Project Study Limits - 155.5 Acres

**FEMA Flood Zone**

A: 1% annual chance flood hazard

X: <1% annual chance flood hazard



**TIMMONS GROUP**

LUCK STONE - GREENE QUARRY

GREENE COUNTY, VIRGINIA

FIGURE 2: FEMA FLOOD ZONE MAP

JOB NUMBER  
38492

SHEET NO.  
1 OF 1

YOUR VISION ACHIEVED THROUGH OURS

Site Development | Residential | Infrastructure | Technology | Environmental

THIS DRAWING PREPARED AT THE  
CORPORATE OFFICE  
1001 Boulders Parkway, Suite 300 | Richmond, VA 23225  
TEL 804.200.6500 FAX 804.560.7648 www.timmons.com

REVISION DESCRIPTION

DATE	
06/05/2017	
DRAWN BY	B. EBERLINE
DESIGNED BY	B. EBERLINE
CHECKED BY	T. PREUNINGER
SCALE	1" = 1,000'

These plans and associated documents are the exclusive property of TIMMONS GROUP and may not be reproduced in whole or in part and shall not be used for any purpose whatsoever, inclusive, but not limited to construction, bidding, and/or construction staking without the express written consent of TIMMONS GROUP.



Impacts Table				
Impact ID	Wetland (sq.ft.)	Stream (l.f.)		
	Impact	Impact		
	Permanent	Permanent		
	PFO	R3	R4	R6
1		3,599		
2	216			
3	72			
4	3,023			
5				24
6	499			
7	573			
8				310
8A			333	
9	517			
10	73			
Total	4,973 sq ft 0.11 ac	3,599 lf	333 lf	334 lf

Legend

Quarry Limits - 387 Acres

Jurisdictional Determination Limits - 155.5 Acres

Limits of Disturbance - 82.2 Acres

Stream Impact

Wetland Impact

Proposed Grading

Permanent Stream Impact

Culvert

Perennial Stream (R3)

Intermittent Stream (R4)

Ephemeral Stream (R6)

Permanent Wetland Impact

Palustrine Emergent (PEM) Wetlands

Palustrine Forested (PFO) Wetlands

Palustrine Scrub-Shrub (PSS) Wetlands

NOTES:

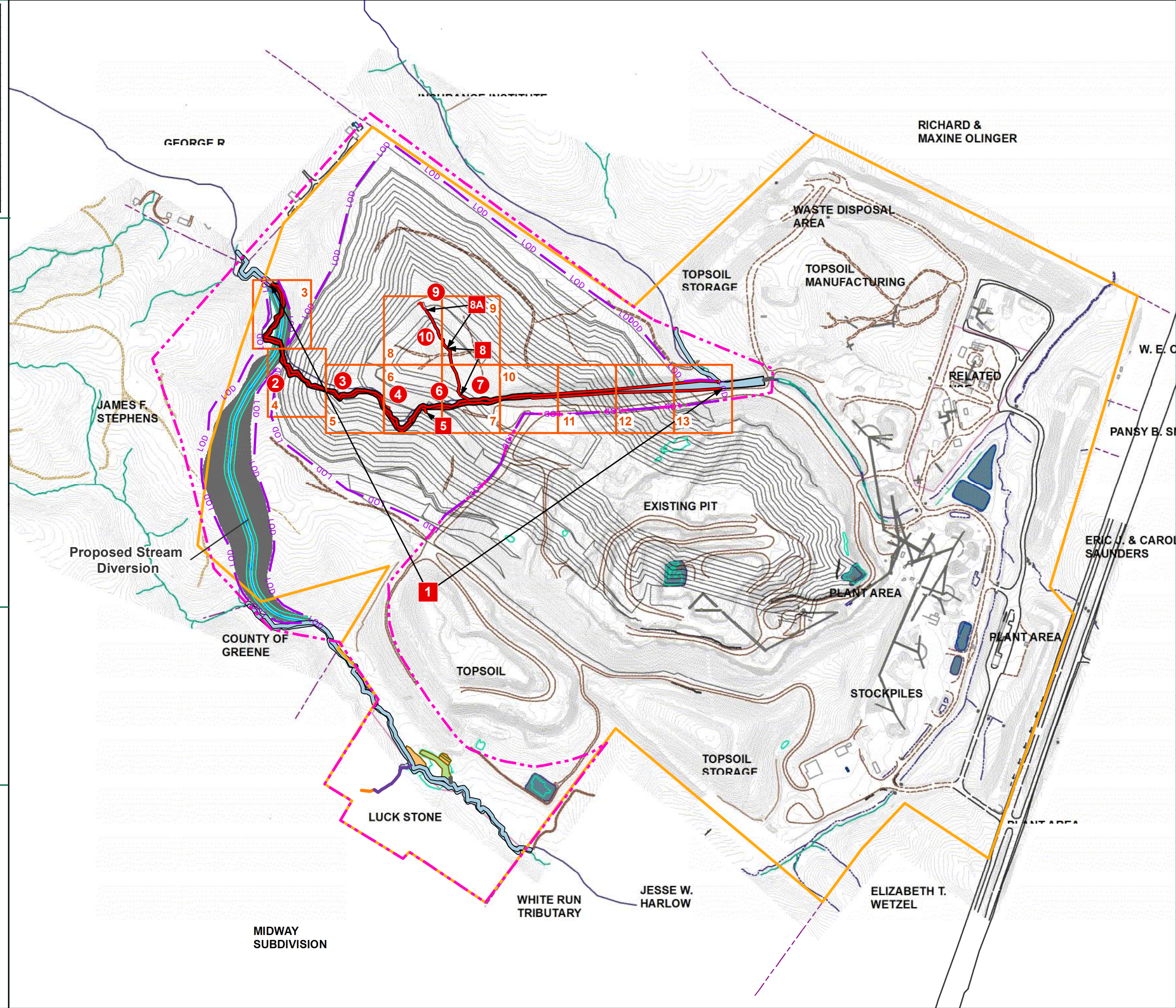
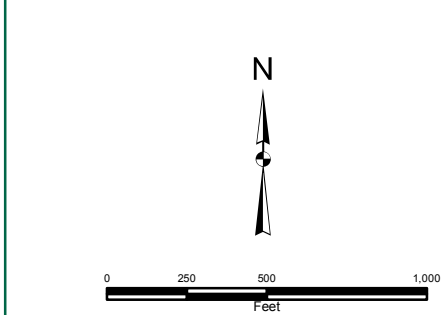
1. WATERS OF THE U.S. WITHIN THE PROJECT STUDY LIMITS HAVE BEEN GPS LOCATED BY TIMMONS GROUP.

2. WATERS OF THE U.S. HAVE BEEN CONFIRMED BY THE U.S. ARMY CORPS OF ENGINEERS (6/20/17, NAO 2017-00929).

3. PROJECT STUDY LIMITS ARE APPROXIMATE.

4. TOPOGRAPHY BASED ON USGS LIDAR DATA.

5. COWARDIN STREAM CLASSIFICATIONS ARE BASED SOLELY ON FIELD OBSERVATIONS. NO FORMAL STREAM ASSESSMENT METHODOLOGY WAS COMPLETED TO DETERMINE THESE COWARDIN CLASSIFICATIONS.



THIS DRAWING PREPARED AT THE  
CORPORATE OFFICE  
1001 Boulders Parkway, Suite 300 | Richmond, VA 23225  
TEL 804.200.6500 FAX 804.560.7648 www.timmons.com

YOUR VISION ACHIEVED THROUGH OURS

Site Development | Residential | Infrastructure | Technology | Environmental

REVISION DESCRIPTION

DATE 8/7/17 Map updated per revised grading plans.

DATE 06/05/2017

DRAWN BY B. EBERLINE

DESIGNED BY B. EBERLINE

CHECKED BY T. PREUNINGER

SCALE 1" = 600'

TIMMONS GROUP

LUCK STONE - GREENE QUARRY

GREENE COUNTY, VIRGINIA

FIGURE 3: PRELIMINARY JURISDICTIONAL WATERS OF THE U.S. IMPACTS MAP

JOB NUMBER 38492
















SHEET NO. 1 OF 13

Path: Y:\04\38492\Luck\_Stone\_Greene\GIS\Wetland\Impacts\38492-WTMM.mxd

These plans and associated documents are the exclusive property of TIMMONS GROUP and may not be reproduced in whole or in part and shall not be used for any purpose whatsoever, inclusive, but not limited to construction, bidding, and/or construction staking without the express written consent of TIMMONS GROUP.



**Legend**

-  Quarry Limits - 387 Acres  
 Jurisdictional Determination Limits - 155.5 Acres  
 Limits of Disturbance - 82.2 Acres  
 Stream Impact  
 Wetland Impact  
 Proposed Grading  
 Permanent Stream Impact  
 Culvert  
 Perennial Stream (R3)  
 Intermittent Stream (R4)  
 Ephemeral Stream (R6)  
 Permanent Wetland Impact  
 Palustrine Emergent (PEM) Wetlands  
 Palustrine Forested (PFO) Wetlands  
 Palustrine Scrub-Shrub (PSS) Wetlands

**NOTES:**

1. WATERS OF THE U.S. WITHIN THE PROJECT STUDY LIMITS HAVE BEEN GPS LOCATED BY TIMMONS GROUP.
2. WATERS OF THE U.S. HAVE BEEN CONFIRMED BY THE U.S. ARMY CORPS OF ENGINEERS (6/20/17, NAO 2017-00929).
3. PROJECT STUDY LIMITS ARE APPROXIMATE.
4. TOPOGRAPHY BASED ON USGS LIDAR DATA.
5. COWARDIN STREAM CLASSIFICATIONS ARE BASED SOLELY ON FIELD OBSERVATIONS. NO FORMAL STREAM ASSESSMENT METHODOLOGY WAS COMPLETED TO DETERMINE THESE COWARDIN CLASSIFICATIONS.

Impacts Table				
Impact ID	Wetland (sq.ft.)	Stream (l.f.)		
	Impact	Impact		
	Permanent	Permanent		
	PFO	R3	R4	R6
1		3,599		
2	216			
3	72			
4	3,023			
5				24
6	499			
7	573			
8				310
8A			333	
9	517			
10	73			
Total	4,973 sq ft	3,599 lf	333 lf	334 lf
	0.11 ac	4,266 lf		

# TIMMONS GROUP



YOUR VISION ACHIEVED THROUGH OURS

THIS DRAWING PREPARED AT THE  
CORPORATE OFFICE  
1001 Boulders Parkway, Suite 300 | Richmond, VA 23225  
TEL 804.200.6500 FAX 804.560.1648 www.timmons.com

Site Development | Residential | Infrastructure | Technology | Environmental

SHEET NO. 2 OF 13	JOB NUMBER 38492	LUCK STONE - GREENE QUARRY GREENE COUNTY, VIRGINIA	SCALE N/A	CHECKED BY T. PREUNINGER	DESIGNED BY B. EBERLINE	DRAWN BY B. EBERLINE	DATE		REVISION DESCRIPTION
							DATE		
							06/05/2017	8/7/17	
PRELIMINARY JURISDICTIONAL WATERS OF THE U.S. IMPACTS MAP - NOTES									

1001 Boulders Parkway, Suite 300 | Richmond, VA 23225  
TEL 804.200.6500 FAX 804.560.1648 [www.timmons.com](http://www.timmons.com)

		DATE	REVISION DESCRIPTION
DRAWN BY B. EFFERLINE	06/05/2017	8/7/17	Map updated per revised grading plans.

## PRELIMINARY JURISDICTIONAL WATERS OF THE U.S. IMPACTS MAP - DETAIL

JOB NUMBER  
38492

SHEET NO  
3 OF 13

DESIGNED BY B. EBERLINE	CHECKED BY T. PREUNINGER	SCALE 1" = 50'
----------------------------	-----------------------------	-------------------

These plans and associated documents are the exclusive property of TIMMONS GROUP and may not be reproduced in whole or in part and shall not be used for any purpose whatsoever, inclusive, but not limited to construction, bidding, and/or construction staking without the express written consent of TIMMONS GROUP.

# TIMMONS GROUP

JOB NUMBER <b>38492</b>  SHEET NO <b>4 OF 13</b>	<b>LUCK STONE - GREENE QUARRY</b> GREENE COUNTY, VIRGINIA
	<b>PRELIMINARY JURISDICTIONAL WATERS OF THE U.S. IMPACTS MAP - DETAIL</b>

DRAWN BY B. EBERLINE	DESIGNED BY B. EBERLINE	CHECKED BY T. PREUNINGER	SCALE 1" = 50'
-------------------------	----------------------------	-----------------------------	-------------------

REVISION DESCRIPTION	
8/7/17	Map updated per revised grading plans.

These plans and associated documents are the exclusive property of TIMMONS GROUP and may not be reproduced in whole or in part and shall not be used for any purpose whatsoever, inclusive, but not limited to construction, bidding, and/or construction staking without the express written consent of TIMMONS GROUP.



1001 Boulders Parkway, Suite 300 | Richmond, VA 23225  
TEL 804.200.6500 FAX 804.560.1648 [www.timmons.com](http://www.timmons.com)

8/7/17	Map updated per revised grading plans.
--------	--

Site Development | Residential | Infrastructure | Technology | Environmental

DRAWN BY B. EBERLINE	DESIGNED BY B. EBERLINE	CHECKED BY T. PREUNINGER	SCALE 1" = 50'
-------------------------	----------------------------	-----------------------------	-------------------

DATE
8/7/17

8/7/17	Map updated per revised grading plans.
--------	--

JOB NUMBER  
38492

SHEET NO  
6 OF 13

JOB NUMBER

Site Development | Residential | Infrastructure | Technology | Environmental

DRAWN BY B. EBERLINE	DESIGNED BY B. EBERLINE	CHECKED BY T. PREUNINGER	SCALE 1" = 50'
-------------------------	----------------------------	-----------------------------	-------------------

DATE
8/7/17

7	Map updated per revised grading plans.
---	--

SHEET NO  
7 OF 13

JOB NUMBER

These plans and associated documents are the exclusive property of TIMMONS GROUP and may not be reproduced in whole or in part and shall not be used for any purpose whatsoever, inclusive, but not limited to construction, bidding, and/or construction staking without the express written consent of TIMMONS GROUP.



**THIS DRAWING PREPARED AT THE  
CORPORATE OFFICE**

01 Boulders Parkway, Suite 300 | Richmond, VA 23225  
TEL 804.200.6500 FAX 804.560.1648 [www.timmons.com](http://www.timmons.com)

JOB NUMBER 38492 SHEET NO. 8 OF 13	<h1>LUCK STONE - GREENE QUARRY</h1> <p>GREENE COUNTY, VIRGINIA</p>
	<h2>PRELIMINARY JURISDICTIONAL WATERS OF THE U.S. IMPACTS MAP - DETAIL</h2>

DRAWN BY B. EBERLINE	DESIGNED BY B. EBERLINE	CHECKED BY T. PREUNINGER	SCALE 1" = 50'
-------------------------	----------------------------	-----------------------------	-------------------

DATE	REVISION DESCRIPTION
8/7/17	Map updated per revised grading plans.

These plans and associated documents are the exclusive property of TIMMONS GROUP and may not be reproduced in whole or in part and shall not be used for any purpose whatsoever, inclusive, but not limited to construction, bidding, and/or construction staking without the express written consent of TIMMONS GROUP.

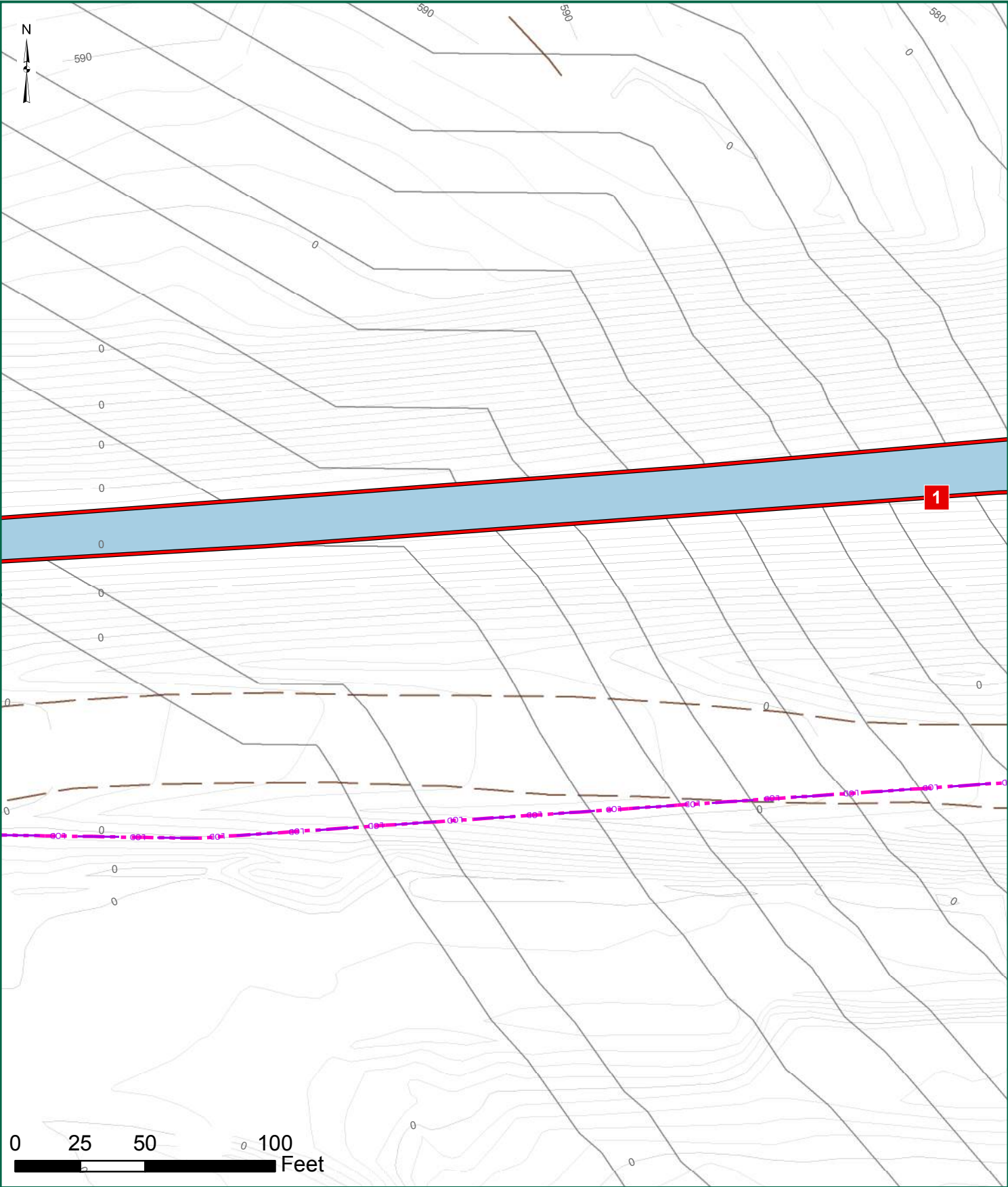












**TIMMONS GROUP**

YOUR VISION ACHIEVED THROUGH OURS

Site Development | Residential | Infrastructure | Technology | Environmental

THIS DRAWING PREPARED AT THE CORPORATE OFFICE

1001 Boulders Parkway, Suite 300 | Richmond, VA 23225  
TEL 804.200.6500 FAX 804.560.1648 www.timmons.com

**LUCK STONE - GREENE QUARRY**

GREENE COUNTY, VIRGINIA

**PRELIMINARY JURISDICTIONAL WATERS OF THE U.S. IMPACTS MAP - DETAIL**

DESIGNED BY  
B. EBERLINE

CHECKED BY  
T. PREUNINGER

SCALE  
1" = 50'

DRAWN BY  
B. EBERLINE

DATE  
06/05/2017

DATE	REVISION DESCRIPTION
8/7/17	Map updated per revised grading plans.

JOB NUMBER  
38492

SHEET NO.  
17 OF 13



1001 Boulders Parkway, Suite 300 | Richmond, VA 23225  
TEL 804.200.6500 FAX 804.560.1648 [www.timmons.com](http://www.timmons.com)

JOB NUMBER 36492	SHEET NO. 12 OF 13	<h1 style="text-align: center;">LUCK STONE - GREENE QUARRY</h1> <p style="text-align: center;">GREENE COUNTY, VIRGINIA</p>	SCALE 1" = 50'	DRAWN BY B. EBERLINE  DESIGNED BY B. EBERLINE  CHECKED BY T. PRELUNJINGGER	DATE	REVISION DESCRIPTION
					06/05/2017	8/7/17 Map updated per revised grading plans.
PRELIMINARY JURISDICTIONAL WATERS OF THE U.S. IMPACTS MAP - DETAIL						

These plans and associated documents are the exclusive property of TIMMONS GROUP and may not be reproduced in whole or in part and shall not be used for any purpose whatsoever, inclusive, but not limited to construction, bidding, and/or construction staking without the express written consent of TIMMONS GROUP.



SHEET NO 73 OF 73	JOB NUMBER 39492	<b>LUCK STONE - GREENE QUARRY</b> GREENE COUNTY, VIRGINIA		SCALE 1" = 50'	DRAWN BY B. EBERLINE DESIGNED BY B. EBERLINE CHECKED BY T. PREUNINGER	DATE 06/09/2017	REVISION DESCRIPTION 8/7/17 Map updated per revised grading plans.
<b>PRELIMINARY JURISDICTIONAL WATERS OF THE U.S. IMPACTS MAP - DETAIL</b>							

These plans and associated documents are the exclusive property of TIMMONS GROUP and may not be reproduced in whole or in part and shall not be used for any purpose whatsoever, inclusive, but not limited to construction, bidding, and/or construction staking without the express written consent of TIMMONS GROUP.